



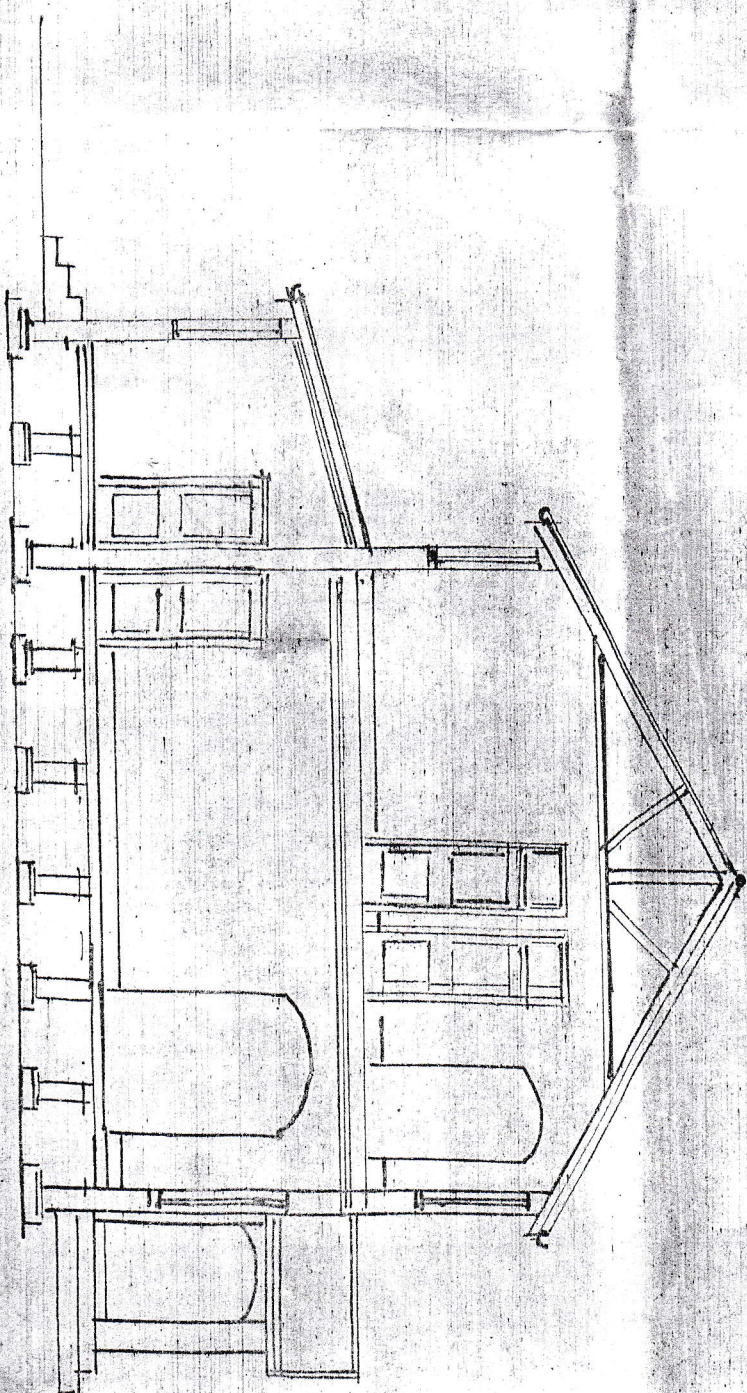
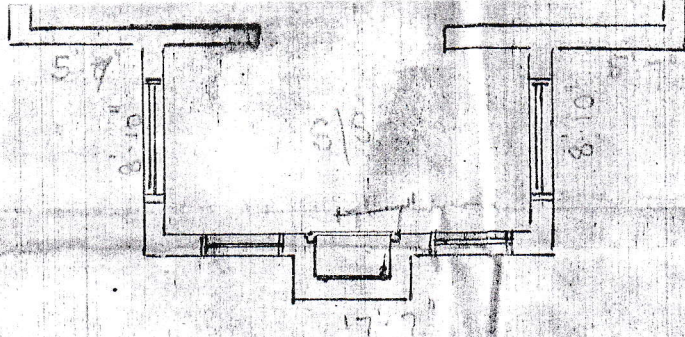
The Booms

Westville

Proposed. Additions to Residence

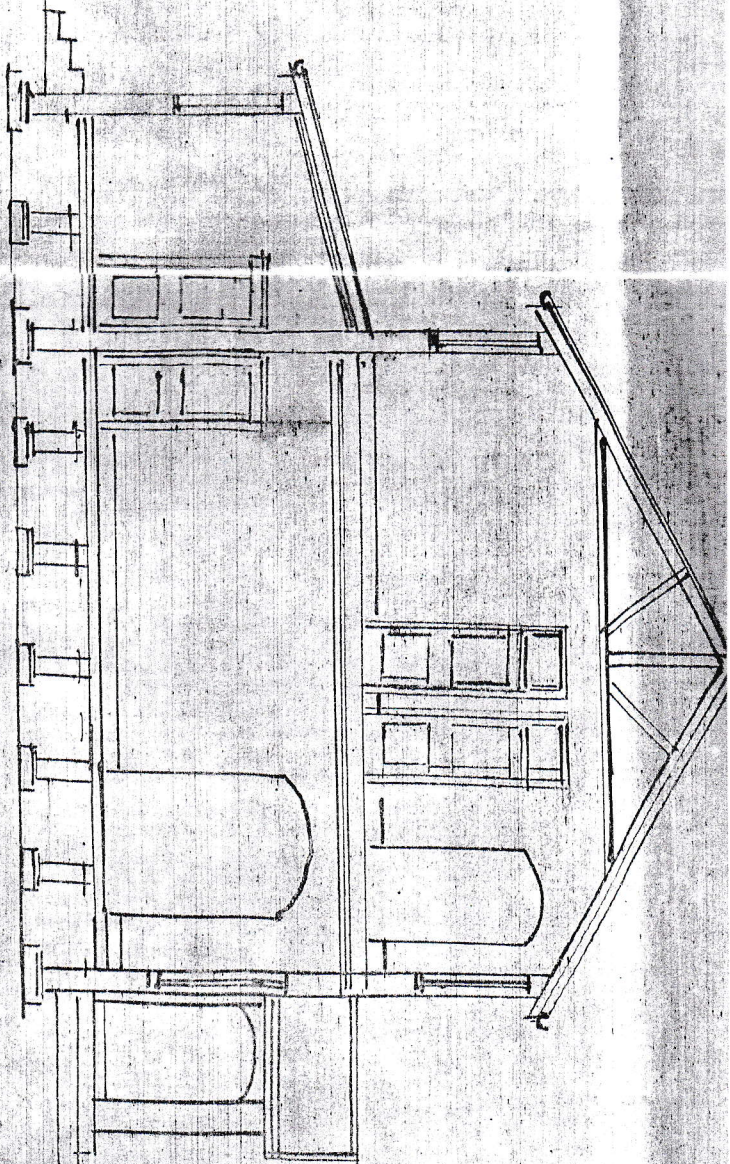
Wm. G. W. Ross

Scale



Section

APPROVED:  
Subject to re-approval. Building  
10 ft. from Road - 5 ft. from Boundary



Section

**APPROVED:**

Subject to non-material Building in stand  
10th from Road — 6 h. from Boundary.  
Sanitary provisions as required by Board.

*A. K. Vinn*

SECRETARY,

9.1.31.

HL  
120657  
AM