

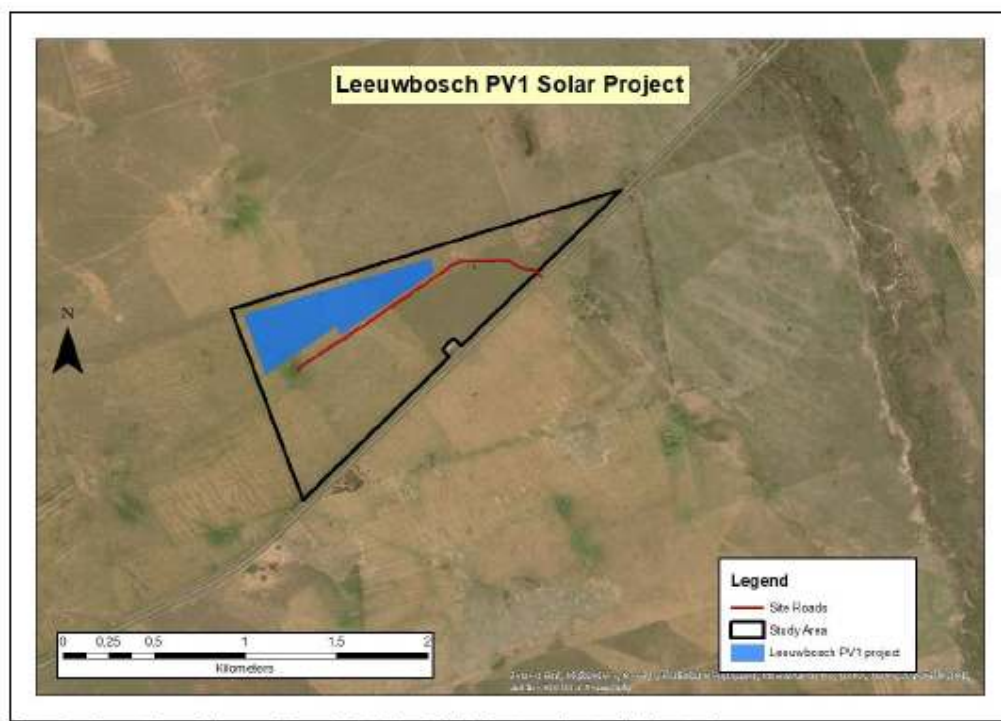
20-04-2022

To whom it may concern:

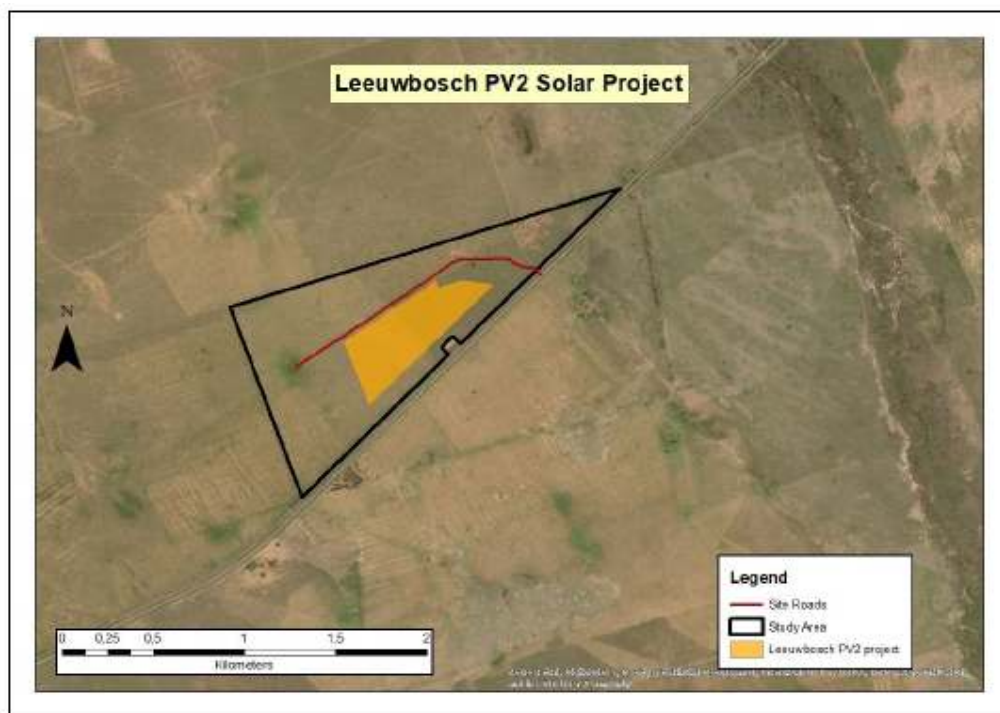
Leeuwbosch PV3 Solar Facility, Leeudoringstad – Soil and Agricultural Potential

ARC-Soil Climate and Water was appointed to carry out the original soil and agricultural potential assessment for the various developments and infrastructure for the Leeudoringstad Solar Project. This was reported on in 2016/17 and again in 2020.

The specific areas that were reported on include the two sites as shown below, namely “Leeuwbosch 1” (shown in blue) and “Leeuwbosch 2” (shown in orange).



Map 1. Leeuwbosch 1 site



Map 2. Leeuwbosch 2 site

As was reported on in the original report, both of these sites fall within the same broad mapping unit (land type **Fb6**) and have the same soil pattern, general agricultural potential (“low”) and the same limitations, impacts and other relevant aspects.

Subsequently, a further site (“Leeuwbosch 3”) has been identified within the same broad study area, and this site is shown on Map 3 below (in pink).



Map 3. Leeuwbosch 3 site

Based on the same land type base data set used previously, I can confirm that the Leeuwbosch 3 site falls into the same mapping unit as the other two sites, and will be subject to the same soil pattern, agricultural potential and potential impacts.

Yours sincerely,

A handwritten signature in black ink, appearing to be 'DG Paterson', on a light background.

DG Paterson (Dr)
Research Team Manager (Soil Science),
ARC-NRE, Pretoria

garry@arc.agric.za

Tel: 012 310 2501 or 083 556 2458

SACNASP Registration No. 400463/04