

**SCREENING REPORT FOR AN ENVIRONMENTAL AUTHORIZATION AS
REQUIRED BY THE 2014 EIA REGULATIONS – PROPOSED SITE
ENVIRONMENTAL SENSITIVITY**

EIA Reference number:

Project name: Wolf-Skilpad-Grassridge

Project title: New 132kV Overhead Powerline

Date screening report generated: 09/11/2021 13:33:06

Applicant: Red Rocket South Africa (Pty) Ltd

Compiler: Zutari

Compiler signature:
.....

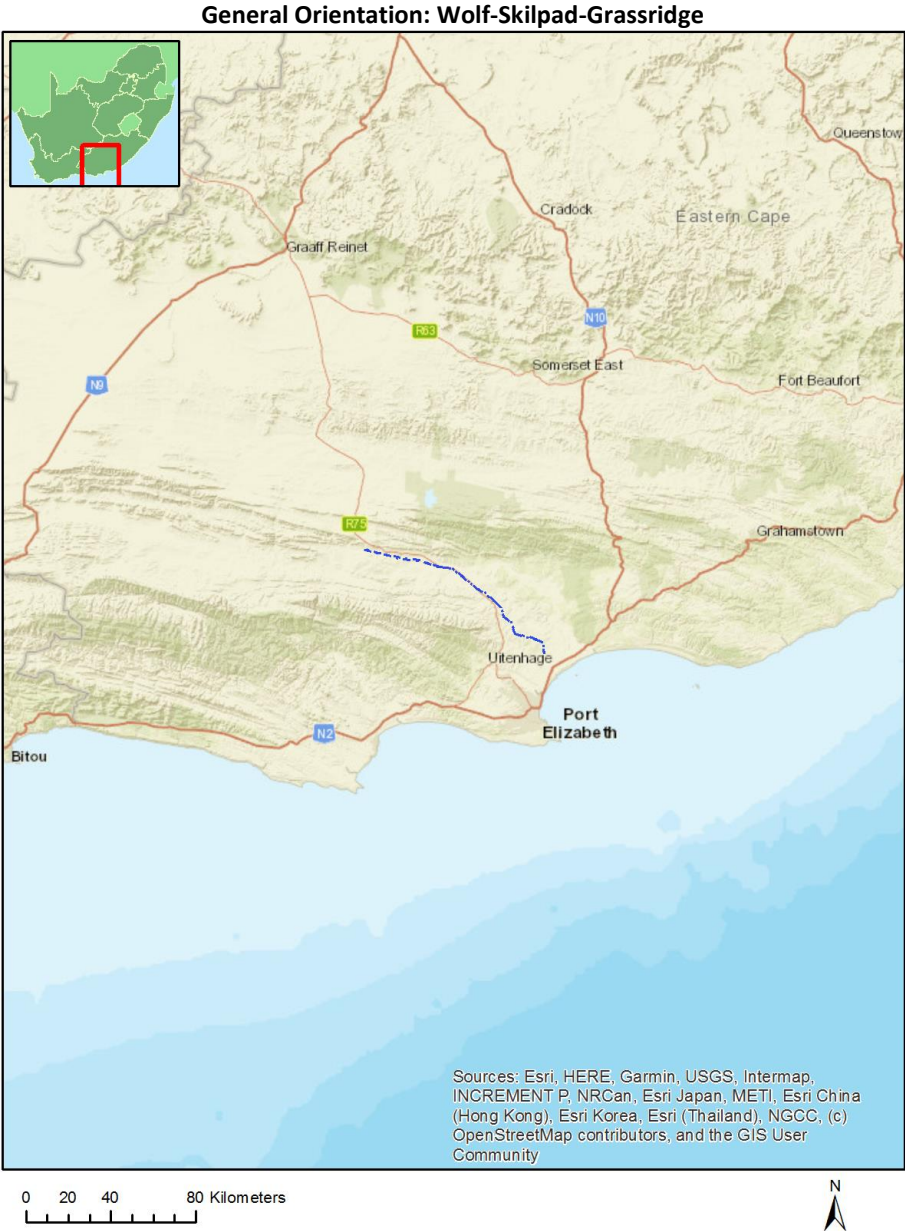
Application Category: Utilities Infrastructure | Electricity | Distribution and Transmission | Powerline

Table of Contents

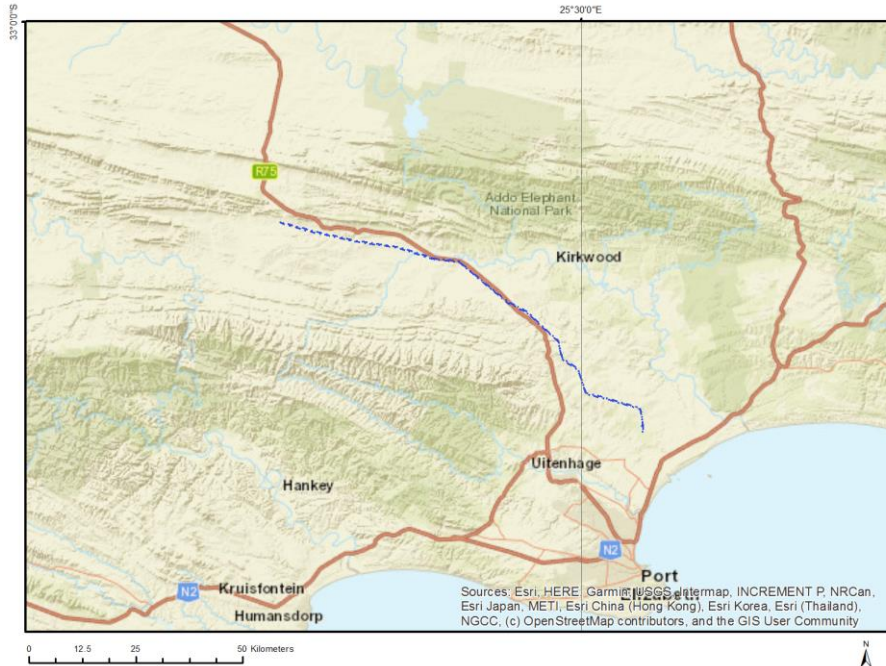
Proposed Project Location	3
Orientation map 1: General location	3
Map of proposed site and relevant area(s)	4
Cadastral details of the proposed site	4
Wind and Solar developments with an approved Environmental Authorisation or applications under consideration within 30 km of the proposed area	6
Environmental Management Frameworks relevant to the application	7
Environmental screening results and assessment outcomes	7
Relevant development incentives, restrictions, exclusions or prohibitions	7
Map indicating proposed development footprint within applicable development incentive, restriction, exclusion or prohibition zones	8
Proposed Development Area Environmental Sensitivity	8
Specialist assessments identified	9
Results of the environmental sensitivity of the proposed area	11
MAP OF RELATIVE AGRICULTURE THEME SENSITIVITY	11
MAP OF RELATIVE ANIMAL SPECIES THEME SENSITIVITY	12
MAP OF RELATIVE AQUATIC BIODIVERSITY THEME SENSITIVITY	13
MAP OF RELATIVE ARCHAEOLOGICAL AND CULTURAL HERITAGE THEME SENSITIVITY	14
MAP OF RELATIVE CIVIL AVIATION THEME SENSITIVITY	15
MAP OF RELATIVE DEFENCE THEME SENSITIVITY	16
MAP OF RELATIVE PALEONTOLOGY THEME SENSITIVITY	17
MAP OF RELATIVE PLANT SPECIES THEME SENSITIVITY	18
MAP OF RELATIVE TERRESTRIAL BIODIVERSITY THEME SENSITIVITY	19

Proposed Project Location

Orientation map 1: General location



Map of proposed site and relevant area(s)



Cadastral details of the proposed site

Property details:

No	Farm Name	Farm/ Erf No	Portion	Latitude	Longitude	Property Type
1	BRAKHILL	139	0	33°32'37.96S	25°23'39E	Farm
2	SCHILPAD LAAGTE	141	0	33°31'5.18S	25°21'44.29E	Farm
3	GRASSRIDGE	187	0	33°34'29.47S	25°27'41.7E	Farm
4	GOOD HOPE	71	0	33°22'22.64S	24°58'57.05E	Farm
5		156	0	33°24'8.67S	25°6'12.71E	Farm
6	KLEIN POORT EAST	10	0	33°20'52.44S	24°53'24.94E	Farm
7	MATJESGOED FONTEIN	61	0	33°20'54.31S	24°56'26.1E	Farm
8	SCHIET NEK	82	0	33°23'40.85S	25°14'36.04E	Farm
9	BLAUW BAATJIES	189	0	33°35'35.17S	25°31'53.57E	Farm
10	GRASSRIDGE	227	0	33°39'30.26S	25°35'35.17E	Farm
11	WELBEDACHT	135	0	33°32'10.35S	25°28'13.93E	Farm
12	MOORDENAARS KRAAL	151	0	33°25'14.07S	25°9'24.24E	Farm
13	VAAL VLEY	190	0	33°38'49.64S	25°32'35.55E	Farm
14	KARIEGA	147	0	33°26'34.06S	25°15'37.34E	Farm
15	AMANZI ANNEX	229	0	33°40'34.38S	25°31'13.12E	Farm
16	PRENTICE KRAAL	233	0	33°37'41.12S	25°27'2.7E	Farm
17	FELSENHEIM	81	0	33°25'39.64S	25°13'5.23E	Farm
18	GOOD WILL	70	0	33°22'45.17S	24°57'10.98E	Farm
19	ROODE WAL OUTSPAN	79	0	33°24'30.04S	25°12'8.35E	Farm
20	STEENBOK VLAKTE	142	0	33°28'26.45S	25°19'56.44E	Farm
21	SCHUILPATDOP	148	0	33°27'8.7S	25°11'13.13E	Farm
22	ROODE KRANTZ	72	0	33°22'55.09S	25°0'41.63E	Farm
23		136	0	33°33'13.3S	25°25'55.57E	Farm
24	GRASSRIDGE	228	0	33°41'25.22S	25°34'18.42E	Farm

25	CENTLIVRES	231	0	33°39'8.09S	25°29'12.24E	Farm
26	SLEDMERE A	137	0	33°31'8.21S	25°25'35.72E	Farm
27		140	0	33°30'29.03S	25°23'28.54E	Farm
28		144	0	33°28'30.23S	25°16'21.46E	Farm
29		157	0	33°23'55.02S	25°2'41.32E	Farm
30	GRINGLEY	188	0	33°35'23.26S	25°29'40.42E	Farm
31		692	0	33°29'11.44S	25°17'53.78E	Farm
32		590	0	33°42'30.24S	25°37'0.95E	Farm
33	EVKOM	612	0	33°43'10.92S	25°37'58.26E	Farm
34		715	0	33°37'25.55S	25°30'16.47E	Farm
35	BLAAUWBOSCH KUIL	669	0	33°20'13.58S	24°51'53.42E	Farm
36	BLAAUWBOSCH KUIL	669	0	33°22'24.59S	24°53'40.2E	Farm
37	KLEIN POORT EAST	10	0	33°20'51.8S	24°53'25.03E	Farm Portion
38	KLEIN POORT EAST	10	0	33°20'49.53S	24°53'24.72E	Farm Portion
39	GOOD WILL	70	1	33°22'11.52S	24°57'56.09E	Farm Portion
40	FELSENHEIM	81	0	33°25'40.89S	25°13'38.65E	Farm Portion
41	GOOD WILL	70	6	33°22'37.57S	24°56'34.32E	Farm Portion
42	ROODE KRANTZ	72	2	33°22'27.72S	25°1'4.57E	Farm Portion
43	MATJESGOED FONTEIN	61	21	33°22'8.87S	24°57'32.81E	Farm Portion
44	MATJESGOED FONTEIN	61	21	33°22'4.26S	24°57'35.13E	Farm Portion
45	PAARDEN LAAGHTE	62	1	33°22'11.21S	24°54'58.06E	Farm Portion
46	GOOD WILL	70	0	33°23'1.26S	24°57'44.62E	Farm Portion
47	ROODE KRANTZ	72	0	33°22'52.73S	25°0'1.57E	Farm Portion
48	ROODE KRANTZ	72	3	33°23'20.51S	25°0'56.92E	Farm Portion
49	ROODE WAL OUTSPAN	79	0	33°24'30.04S	25°12'8.36E	Farm Portion
50	FELSENHEIM	81	1	33°25'41.89S	25°12'35.2E	Farm Portion
51	FELSENHEIM	81	1	33°25'42.25S	25°12'35.28E	Farm Portion
52	SCHIET NEK	82	6	33°25'16.37S	25°14'3.15E	Farm Portion
53	GOOD WILL	70	1	33°22'13.34S	24°57'54.17E	Farm Portion
54	GOOD HOPE	71	0	33°22'39.48S	24°58'19.85E	Farm Portion
55	ROODE KRANTZ	72	2	33°22'35.08S	25°1'11.8E	Farm Portion
56		136	0	33°33'13.3S	25°25'55.56E	Farm Portion
57	KARIEGA	147	1	33°27'11.18S	25°14'15.11E	Farm Portion
58	WELBEDACHT	135	2	33°32'1.44S	25°27'16.15E	Farm Portion
59	SCHUILPATDOP	148	0	33°25'48.11S	25°11'30.94E	Farm Portion
60	MOORDENAARS KRAAL	151	2	33°24'59.11S	25°10'19.83E	Farm Portion
61		156	0	33°24'17.34S	25°8'4.79E	Farm Portion
62	SLEDMERE A	137	0	33°31'35.21S	25°25'21.89E	Farm Portion
63	SCHILPAD LAAGTE	141	0	33°31'5.84S	25°21'44.06E	Farm Portion
64	STEENBOK VLAKTE	142	6	33°29'21.64S	25°20'38.63E	Farm Portion
65	MOORDENAARS KRAAL	151	1	33°24'35.34S	25°9'16.95E	Farm Portion
66	MOORDENAARS KRAAL	151	2	33°24'59.47S	25°10'19.9E	Farm Portion
67	BRAKHILL	139	0	33°32'22.95S	25°22'43.16E	Farm Portion
68	BRAKHILL	139	1	33°32'41.03S	25°24'49.98E	Farm Portion
69		144	1	33°28'24.57S	25°15'43.51E	Farm Portion
70		144	0	33°28'35.87S	25°16'59.37E	Farm Portion
71		156	5	33°23'24.15S	25°4'17.88E	Farm Portion
72		156	4	33°23'37.39S	25°7'54.24E	Farm Portion
73	STEENBOK VLAKTE	142	7	33°29'33.87S	25°19'41.83E	Farm Portion
74	GRASSRIDGE	227	4	33°39'23.24S	25°35'31.42E	Farm Portion
75	GRASSRIDGE	228	0	33°41'2.35S	25°36'7.21E	Farm Portion
76	CENTLIVRES	231	1	33°39'4.74S	25°29'49.31E	Farm Portion
77	PRENTICE KRAAL	233	14	33°35'52.18S	25°26'43.07E	Farm Portion
78	PRENTICE KRAAL	233	4	33°35'43.41S	25°28'4.76E	Farm Portion

79		157	0	33°23'55.02S	25°2'41.32E	Farm Portion
80		156	4	33°23'37.8S	25°7'54.18E	Farm Portion
81	VAAL VLEY	190	0	33°38'49.64S	25°32'35.55E	Farm Portion
82		156	6	33°23'43.06S	25°6'33.51E	Farm Portion
83		140	1	33°30'29.86S	25°23'28.21E	Farm Portion
84		156	6	33°23'42.67S	25°6'33.46E	Farm Portion
85	KARIEGA	147	0	33°27'3.11S	25°16'14.88E	Farm Portion
86	KARIEGA	147	1	33°27'11.87S	25°14'15.12E	Farm Portion
87		156	1	33°23'49.64S	25°5'25.87E	Farm Portion
88	GRASSRIDGE	227	0	33°39'26.52S	25°34'46.67E	Farm Portion
89	PRENTICE KRAAL	233	3	33°38'3.29S	25°28'12.02E	Farm Portion
90	GRASSRIDGE	187	0	33°34'26.12S	25°27'40.04E	Farm Portion
91	PRENTICE KRAAL	233	16	33°37'10.53S	25°27'52.48E	Farm Portion
92	BLAUW BAATJIES	189	5	33°35'44.94S	25°30'16.27E	Farm Portion
93	VAAL VLEY	190	1	33°38'49.91S	25°31'4.29E	Farm Portion
94	BLAUW BAATJIES	189	9	33°36'31.74S	25°30'47.31E	Farm Portion
95	GRINGLEY	188	0	33°35'23.26S	25°29'40.42E	Farm Portion
96	BLAUW BAATJIES	189	11	33°35'16.27S	25°32'17.49E	Farm Portion
97	GRASSRIDGE	227	0	33°39'34.97S	25°36'12.26E	Farm Portion
98	GRASSRIDGE	228	1	33°41'4.73S	25°35'19.01E	Farm Portion
99	AMANZI ANNEX	229	0	33°40'34.38S	25°31'13.12E	Farm Portion
100	PRENTICE KRAAL	233	2	33°38'3.51S	25°28'30.12E	Farm Portion
101	PRENTICE KRAAL	233	15	33°36'19.95S	25°27'31.57E	Farm Portion
102	EVKOM	612	0	33°43'10.26S	25°37'58.21E	Farm Portion
103	BLAAUWBOSCH KUIL	669	0	33°20'9.36S	24°52'40.89E	Farm Portion
104		692	0	33°29'11.44S	25°17'53.78E	Farm Portion
105		590	0	33°42'30.83S	25°37'0.95E	Farm Portion
106	BLAAUWBOSCH KUIL	669	0	33°20'1.67S	24°52'43.85E	Farm Portion
107		715	0	33°37'23.79S	25°30'16.49E	Farm Portion
108	BLAAUWBOSCH KUIL	669	0	33°20'2.78S	24°52'43.77E	Farm Portion
109	GOOD HOPE	71	3	33°23'3.18S	24°59'8.6E	Farm Portion
110	GOOD HOPE	71	0	33°22'33.23S	24°58'20.85E	Farm Portion
111	ROODE KRANTZ	72	0	33°22'54.18S	25°0'1.61E	Farm Portion
112	ROODE WAL OUTSPAN	79	0	33°25'6.36S	25°11'40.38E	Farm Portion
113	SCHIET NEK	82	6	33°25'17.38S	25°14'1.15E	Farm Portion
114	MOORDENAARS KRAAL	151	1	33°24'35.71S	25°9'16.96E	Farm Portion
115	BLAUW BAATJIES	189	0	33°35'14.37S	25°32'16.98E	Farm Portion
116	GRASSRIDGE	228	0	33°41'24.56S	25°34'18.43E	Farm Portion
117	CENTLIVRES	231	7	33°38'15.66S	25°29'20.57E	Farm Portion
118	BLAAUWBOSCH KUIL	669	1	33°20'7.8S	24°51'50.2E	Farm Portion

Development footprint¹ vertices:
No development footprint(s) specified.

Wind and Solar developments with an approved Environmental Authorisation or applications under consideration within 30 km of the proposed area

¹ “development footprint”, means the area within the site on which the development will take place and includes all ancillary developments for example roads, power lines, boundary walls, paving etc. which require vegetation clearance or which will be disturbed and for which the application has been submitted.

No	EIA Reference No	Classification	Status of application	Distance from proposed area (km)
1	14/12/16/3/3/1/1172	Solar PV	Approved	9.6
2	12/12/20/2028	Solar PV	Approved	21.3
3	12/12/20/2449	Solar PV	Approved	0

Environmental Management Frameworks relevant to the application

No intersections with EMF areas found.

Environmental screening results and assessment outcomes

The following sections contain a summary of any development incentives, restrictions, exclusions or prohibitions that apply to the proposed development site as well as the most environmental sensitive features on the site based on the site sensitivity screening results for the application classification that was selected. The application classification selected for this report is:

Utilities Infrastructure | Electricity | Distribution and Transmission | Powerline.

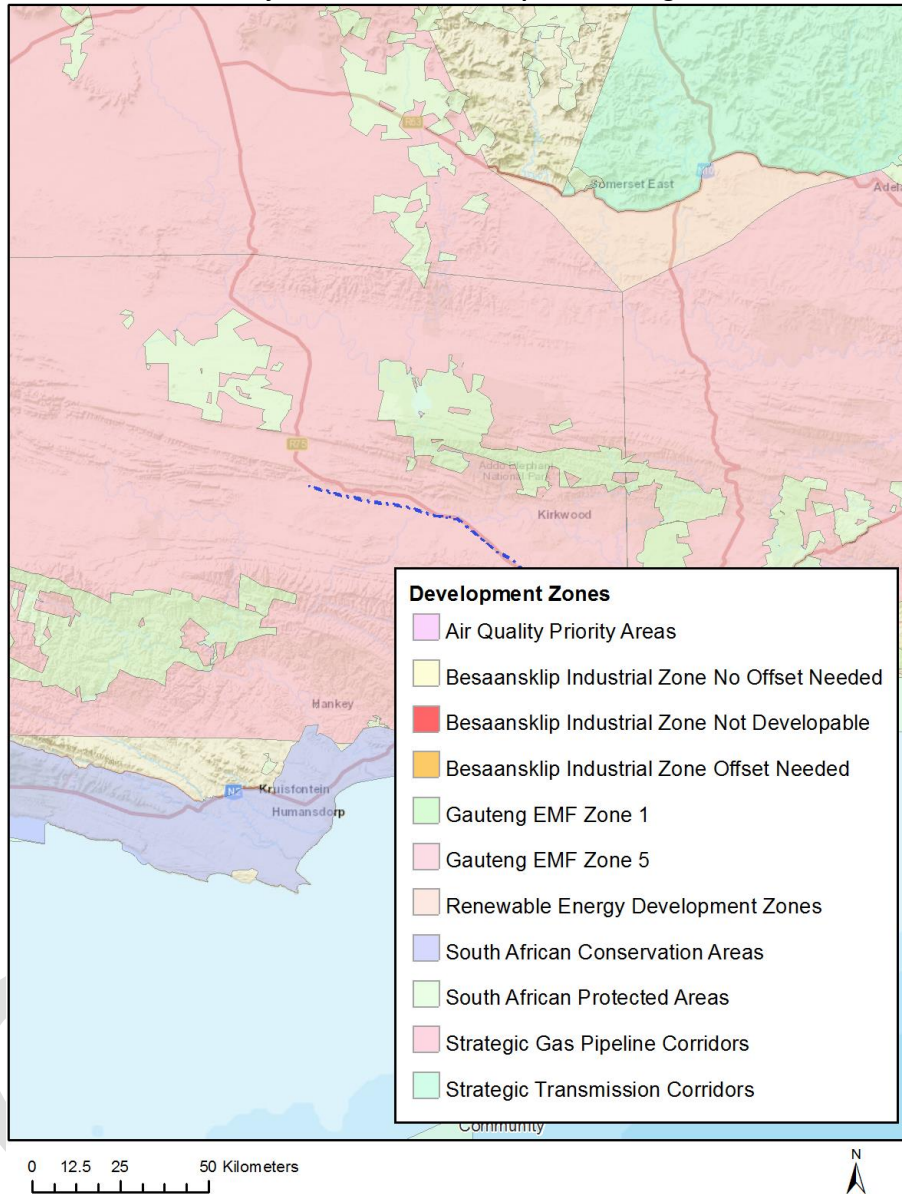
Relevant development incentives, restrictions, exclusions or prohibitions

The following development incentives, restrictions, exclusions or prohibitions and their implications that apply to this site are indicated below.

Incentive, restriction or prohibition	Implication
Strategic Transmission Corridor- Eastern Corridor	https://screening.environment.gov.za/ScreeningDownloads/DevelopmentZones/Combined_EGI.pdf
Strategic Gas Pipeline Corridors- Phase 2: Mossel Bay to Coega	https://screening.environment.gov.za/ScreeningDownloads/DevelopmentZones/Combined_GAS.pdf

Map indicating proposed development footprint within applicable development incentive, restriction, exclusion or prohibition zones

Project Location: Wolf-Skilpad-Grassridge



Proposed Development Area Environmental Sensitivity

The following summary of the development site environmental sensitivities is identified. Only the highest environmental sensitivity is indicated. The footprint environmental sensitivities for the proposed development footprint as identified, are indicative only and must be verified on site by a suitably qualified person before the specialist assessments identified below can be confirmed.

Theme	Very High sensitivity	High sensitivity	Medium sensitivity	Low sensitivity
Agriculture Theme		X		
Animal Species Theme		X		

Aquatic Biodiversity Theme	X			
Archaeological and Cultural Heritage Theme				X
Civil Aviation Theme			X	
Defence Theme				X
Paleontology Theme	X			
Plant Species Theme		X		
Terrestrial Biodiversity Theme	X			

Specialist assessments identified

Based on the selected classification, and the environmental sensitivities of the proposed development footprint, the following list of specialist assessments have been identified for inclusion in the assessment report. It is the responsibility of the EAP to confirm this list and to motivate in the assessment report, the reason for not including any of the identified specialist study including the provision of photographic evidence of the site situation.

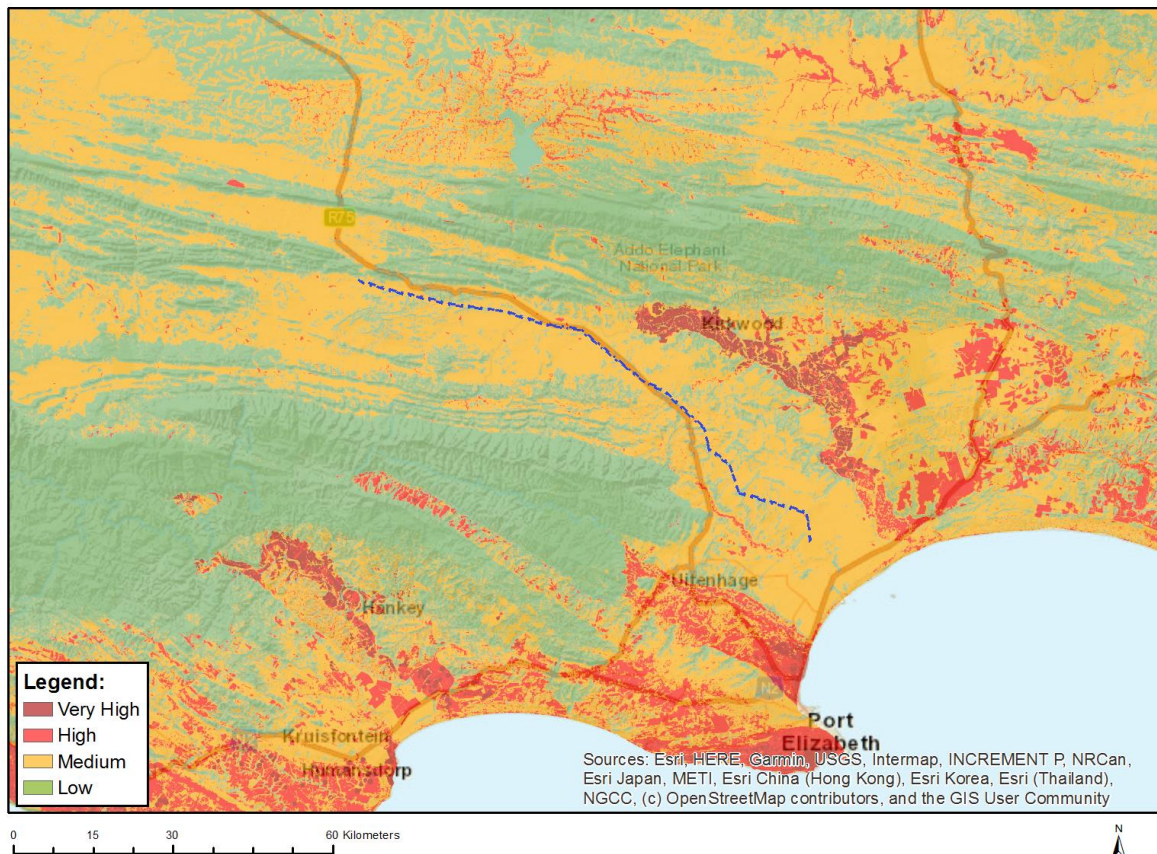
N o	Special ist assessm ent	Assessment Protocol
1	Agricult ural Impact Assessm ent	https://screening.environment.gov.za/ScreeningDownloads/AssessmentProtocols/Gazetted_General_Agriculture_Assessment_Protocols.pdf
2	Landsca pe/Visu al Impact Assessm ent	https://screening.environment.gov.za/ScreeningDownloads/AssessmentProtocols/Gazetted_General_Requirement_Assessment_Protocols.pdf
3	Archaeo logical and Cultural Heritage Impact Assessm ent	https://screening.environment.gov.za/ScreeningDownloads/AssessmentProtocols/Gazetted_General_Requirement_Assessment_Protocols.pdf
4	Palaeon tology Impact Assessm ent	https://screening.environment.gov.za/ScreeningDownloads/AssessmentProtocols/Gazetted_General_Requirement_Assessment_Protocols.pdf
5	Terrestri al Biodiver sity Impact Assessm ent	https://screening.environment.gov.za/ScreeningDownloads/AssessmentProtocols/Gazetted_Terrestrial_Biodiversity_Assessment_Protocols.pdf
6	Aquatic Biodiver sity Impact Assessm ent	https://screening.environment.gov.za/ScreeningDownloads/AssessmentProtocols/Gazetted_Aquatic_Biodiversity_Assessment_Protocols.pdf

7	Avian Impact Assessment	https://screening.environment.gov.za/ScreeningDownloads/AssessmentProtocols/Gazetted_Avifauna_Assessment_Protocols.pdf
8	Civil Aviation Assessment	https://screening.environment.gov.za/ScreeningDownloads/AssessmentProtocols/Gazetted_Civil_Aviation_Installations_Assessment_Protocols.pdf
9	RFI Assessment	https://screening.environment.gov.za/ScreeningDownloads/AssessmentProtocols/Gazetted_General_Requirement_Assessment_Protocols.pdf
10	Geotechnical Assessment	https://screening.environment.gov.za/ScreeningDownloads/AssessmentProtocols/Gazetted_General_Requirement_Assessment_Protocols.pdf
11	Plant Species Assessment	https://screening.environment.gov.za/ScreeningDownloads/AssessmentProtocols/Gazetted_Plant_Species_Assessment_Protocols.pdf
12	Animal Species Assessment	https://screening.environment.gov.za/ScreeningDownloads/AssessmentProtocols/Gazetted_Animal_Species_Assessment_Protocols.pdf

Results of the environmental sensitivity of the proposed area.

The following section represents the results of the screening for environmental sensitivity of the proposed site for relevant environmental themes associated with the project classification. It is the duty of the EAP to ensure that the environmental themes provided by the screening tool are comprehensive and complete for the project. Refer to the disclaimer.

MAP OF RELATIVE AGRICULTURE THEME SENSITIVITY

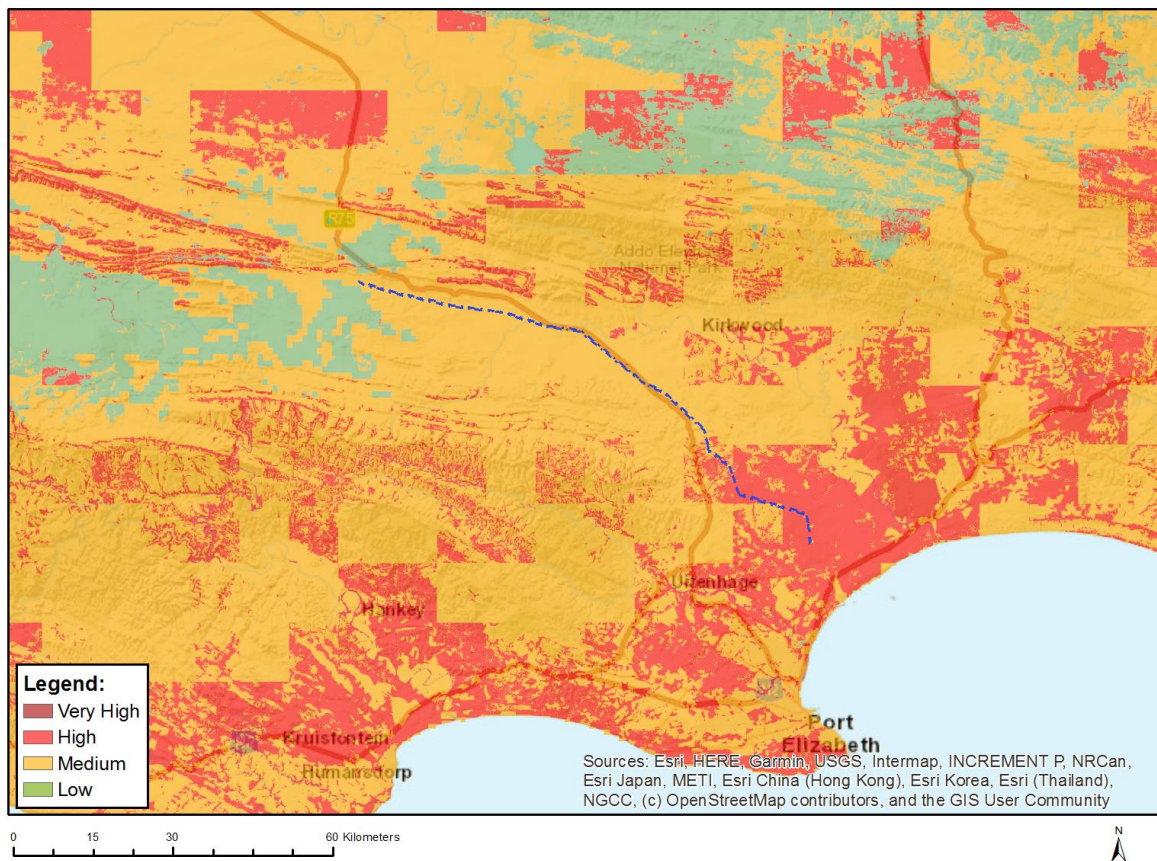


Very High sensitivity	High sensitivity	Medium sensitivity	Low sensitivity
	X		

Sensitivity Features:

Sensitivity	Feature(s)
High	Land capability;09. Moderate-High/10. Moderate-High
High	Annual Crop Cultivation / Planted Pastures Rotation;Land capability;06. Low-Moderate/07. Low-Moderate/08. Moderate
Low	Land capability;01. Very low/02. Very low/03. Low-Very low/04. Low-Very low/05. Low
Medium	Land capability;06. Low-Moderate/07. Low-Moderate/08. Moderate

MAP OF RELATIVE ANIMAL SPECIES THEME SENSITIVITY



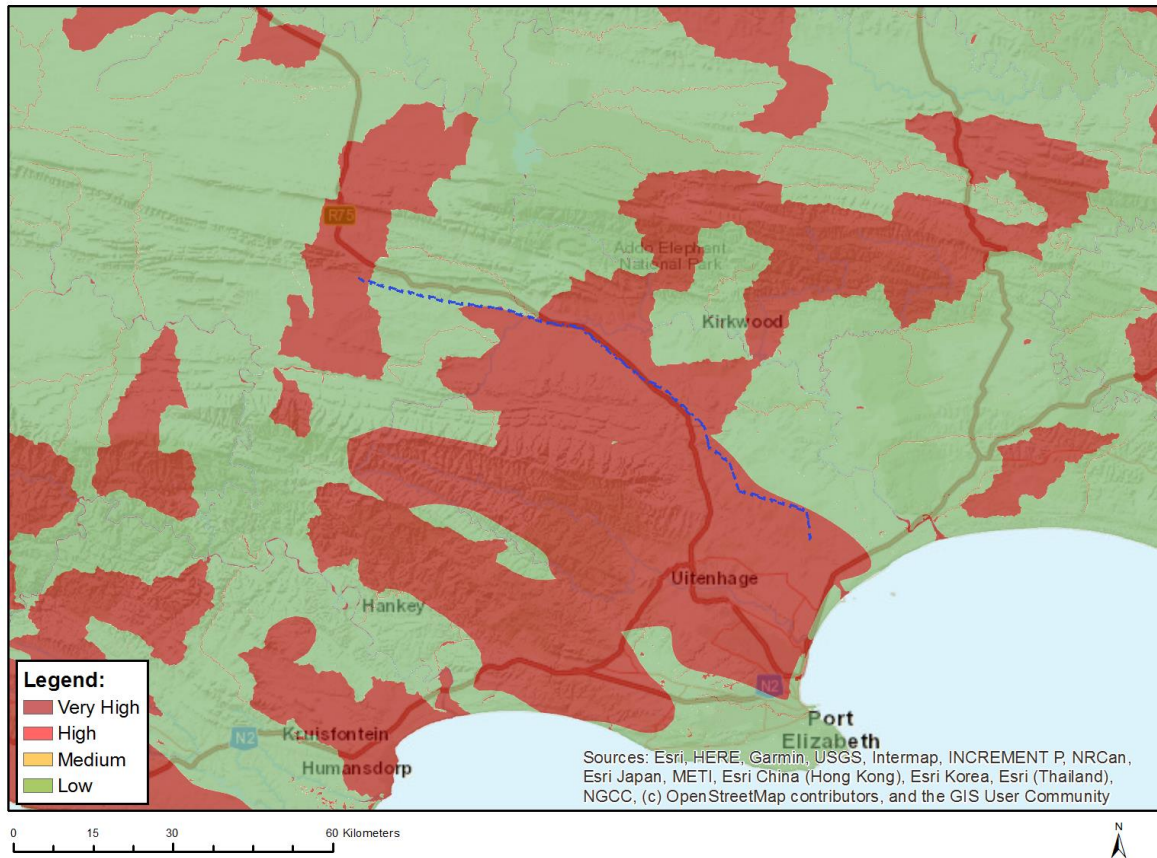
Where only a sensitive plant unique number or sensitive animal unique number is provided in the screening report and an assessment is required, the environmental assessment practitioner (EAP) or specialist is required to email SANBI at eiadatarequests@sanbi.org.za listing all sensitive species with their unique identifiers for which information is required. The name has been withheld as the species may be prone to illegal harvesting and must be protected. SANBI will release the actual species name after the details of the EAP or specialist have been documented.

Very High sensitivity	High sensitivity	Medium sensitivity	Low sensitivity
	X		

Sensitivity Features:

Sensitivity	Feature(s)
High	Sensitive species 18
High	Aves-Circus ranivorus
High	Aves-Circus maurus
High	Aves-Neotis denhami
Medium	Invertebrate-Aneuryphymus montanus
Medium	Aves-Circus ranivorus
Medium	Aves-Circus maurus
Medium	Aves-Neotis denhami
Medium	Aves-Bradypterus sylvaticus
Medium	Mammalia-Acinonyx jubatus
Medium	Mammalia-Chlorotalpa duthieae
Medium	Sensitive species 7
Medium	Sensitive species 18

MAP OF RELATIVE AQUATIC BIODIVERSITY THEME SENSITIVITY

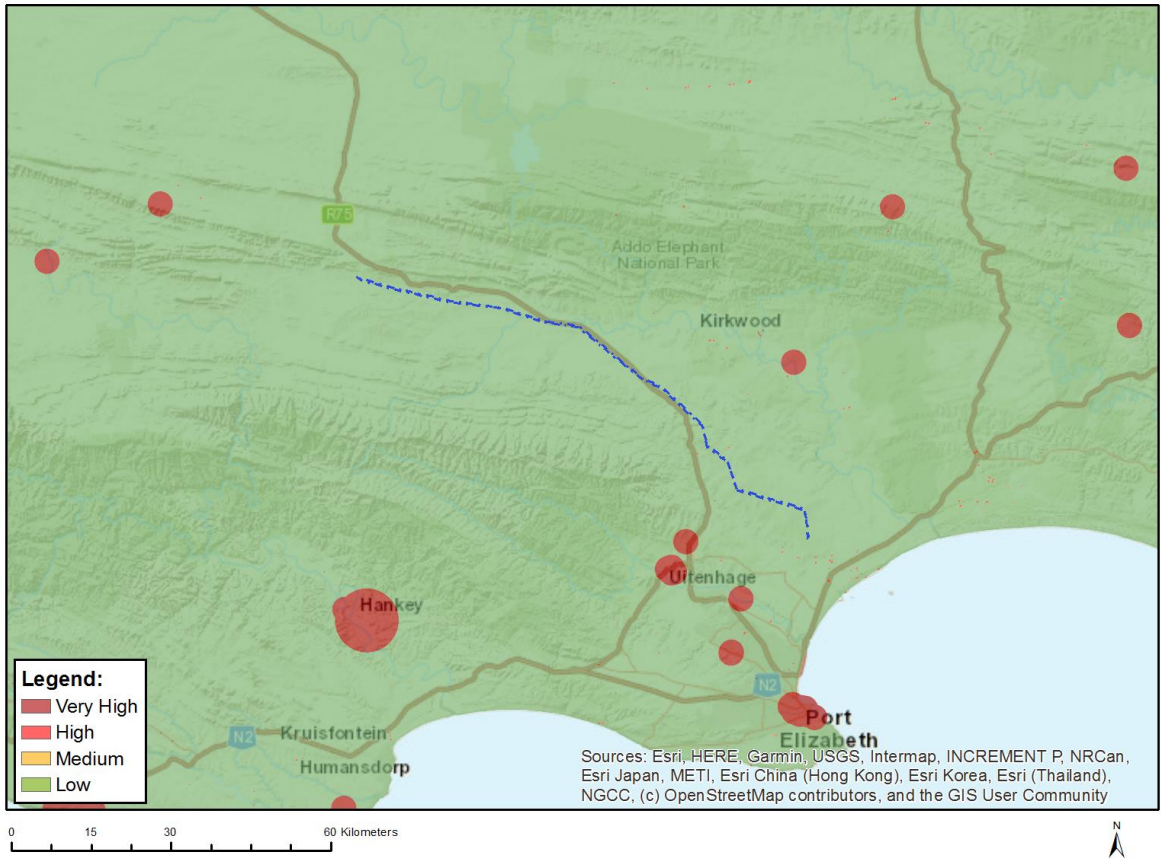


Very High sensitivity	High sensitivity	Medium sensitivity	Low sensitivity
X			

Sensitivity Features:

Sensitivity	Feature(s)
Low	Low sensitivity
Very High	Rivers
Very High	Strategic water source area
Very High	Wetlands and Estuaries
Very High	Freshwater ecosystem priority area quinary catchments

MAP OF RELATIVE ARCHAEOLOGICAL AND CULTURAL HERITAGE THEME SENSITIVITY

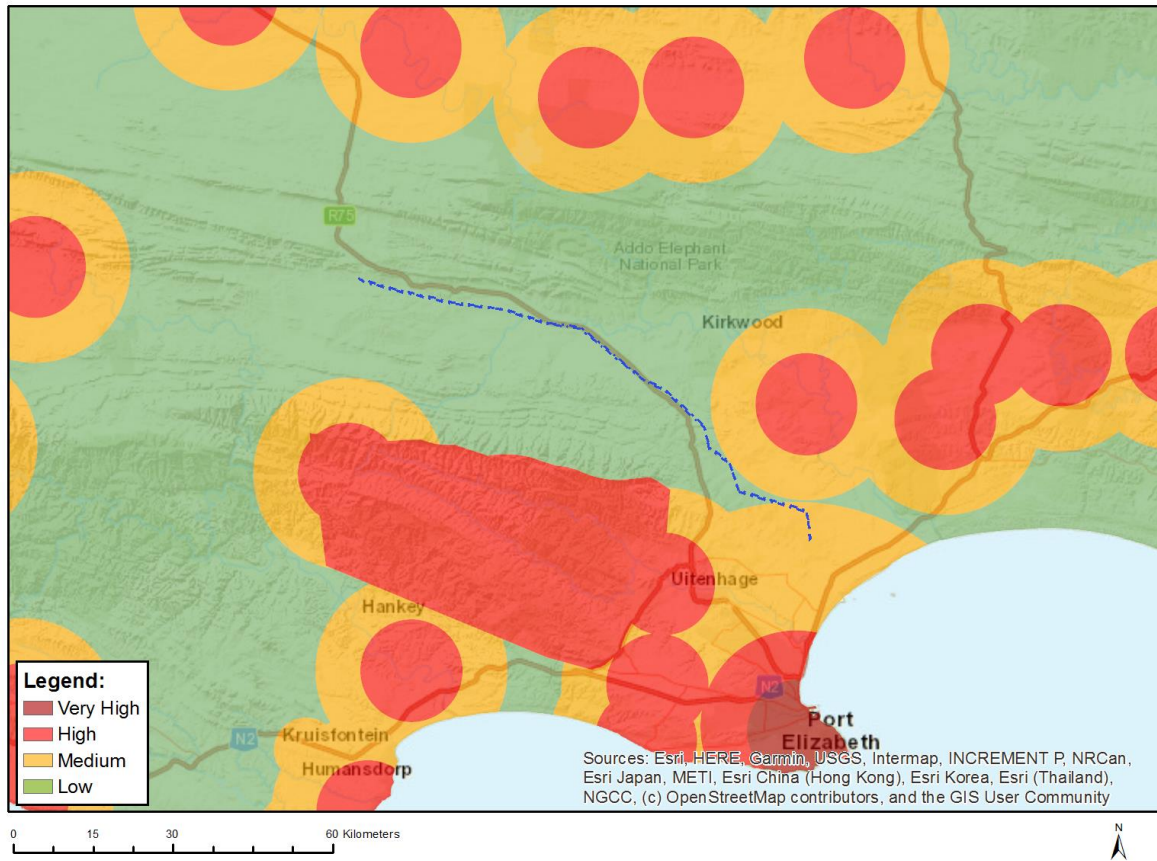


Very High sensitivity	High sensitivity	Medium sensitivity	Low sensitivity
			X

Sensitivity Features:

Sensitivity	Feature(s)
Low	Low sensitivity

MAP OF RELATIVE CIVIL AVIATION THEME SENSITIVITY

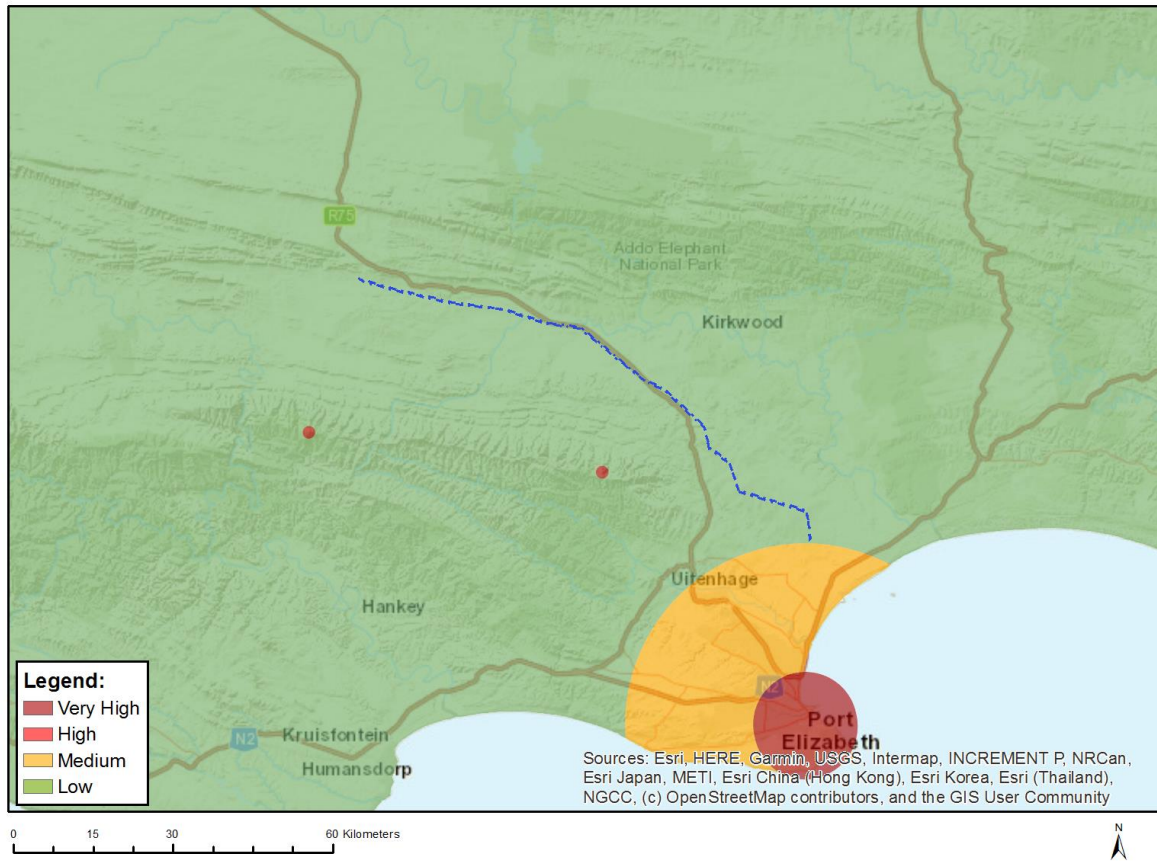


Very High sensitivity	High sensitivity	Medium sensitivity	Low sensitivity
		X	

Sensitivity Features:

Sensitivity	Feature(s)
Low	Low sensitivity
Medium	Between 15 and 35 km from a civil aviation radar
Medium	Between 15 and 35 km from a major civil aviation aerodrome

MAP OF RELATIVE DEFENCE THEME SENSITIVITY

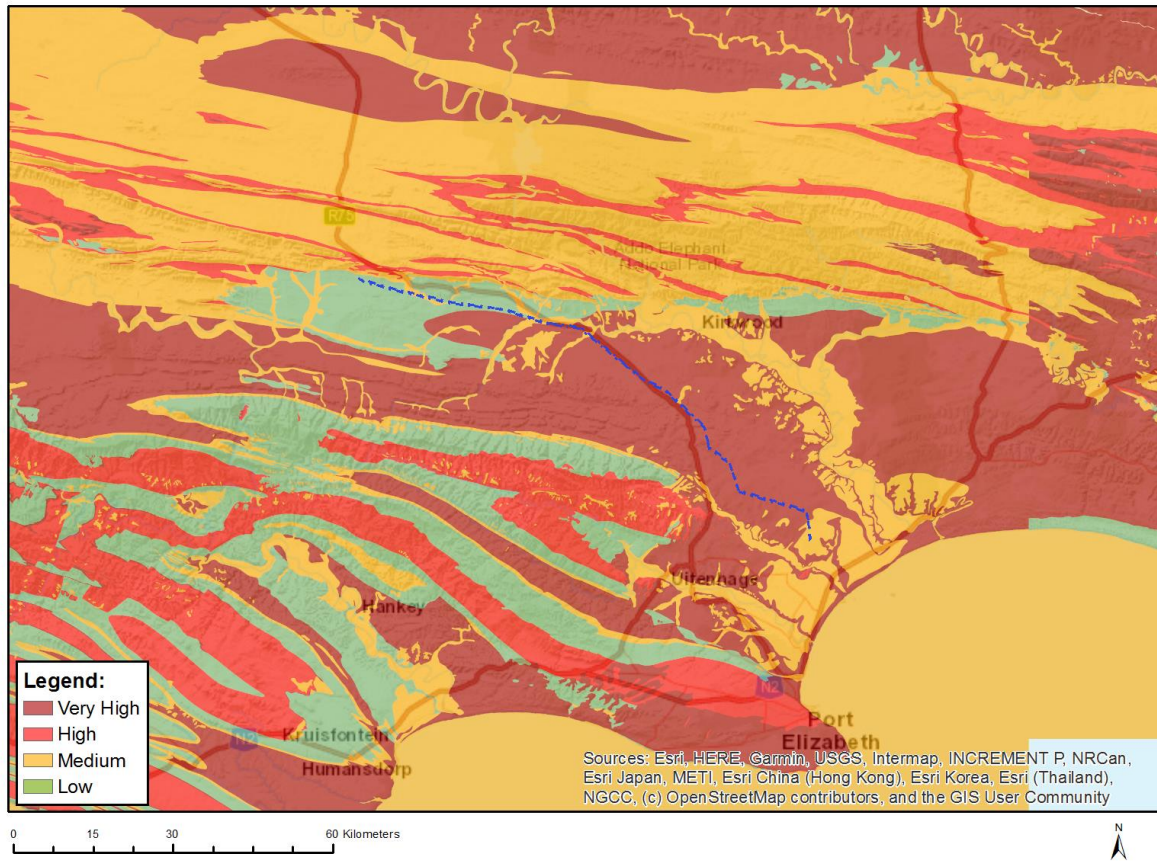


Very High sensitivity	High sensitivity	Medium sensitivity	Low sensitivity
			X

Sensitivity Features:

Sensitivity	Feature(s)
Low	Low Sensitivity

MAP OF RELATIVE PALEONTOLOGY THEME SENSITIVITY

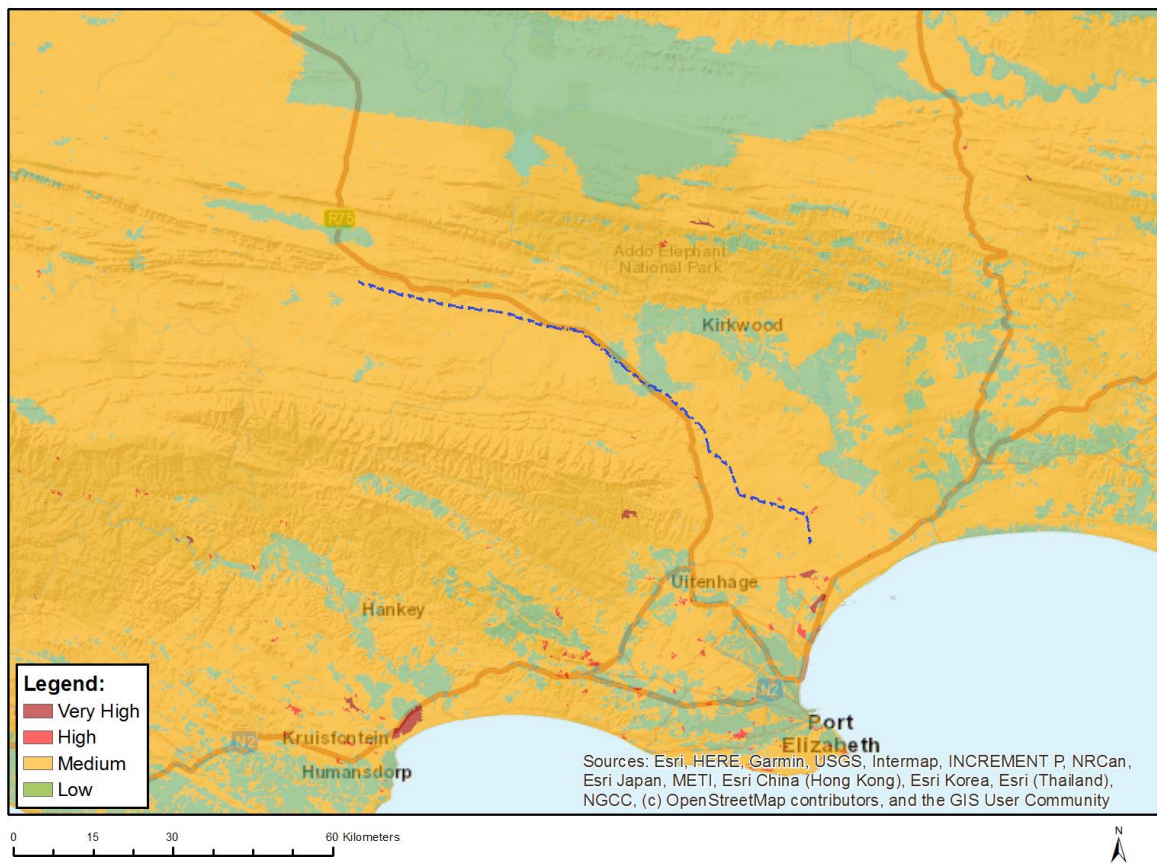


Very High sensitivity	High sensitivity	Medium sensitivity	Low sensitivity
X			

Sensitivity Features:

Sensitivity	Feature(s)
Low	Features with a Low paleontological sensitivity
Medium	Features with a Medium paleontological sensitivity
Very High	Features with a Very High paleontological sensitivity

MAP OF RELATIVE PLANT SPECIES THEME SENSITIVITY



Where only a sensitive plant unique number or sensitive animal unique number is provided in the screening report and an assessment is required, the environmental assessment practitioner (EAP) or specialist is required to email SANBI at eiadatarequests@sanbi.org.za listing all sensitive species with their unique identifiers for which information is required. The name has been withheld as the species may be prone to illegal harvesting and must be protected. SANBI will release the actual species name after the details of the EAP or specialist have been documented.

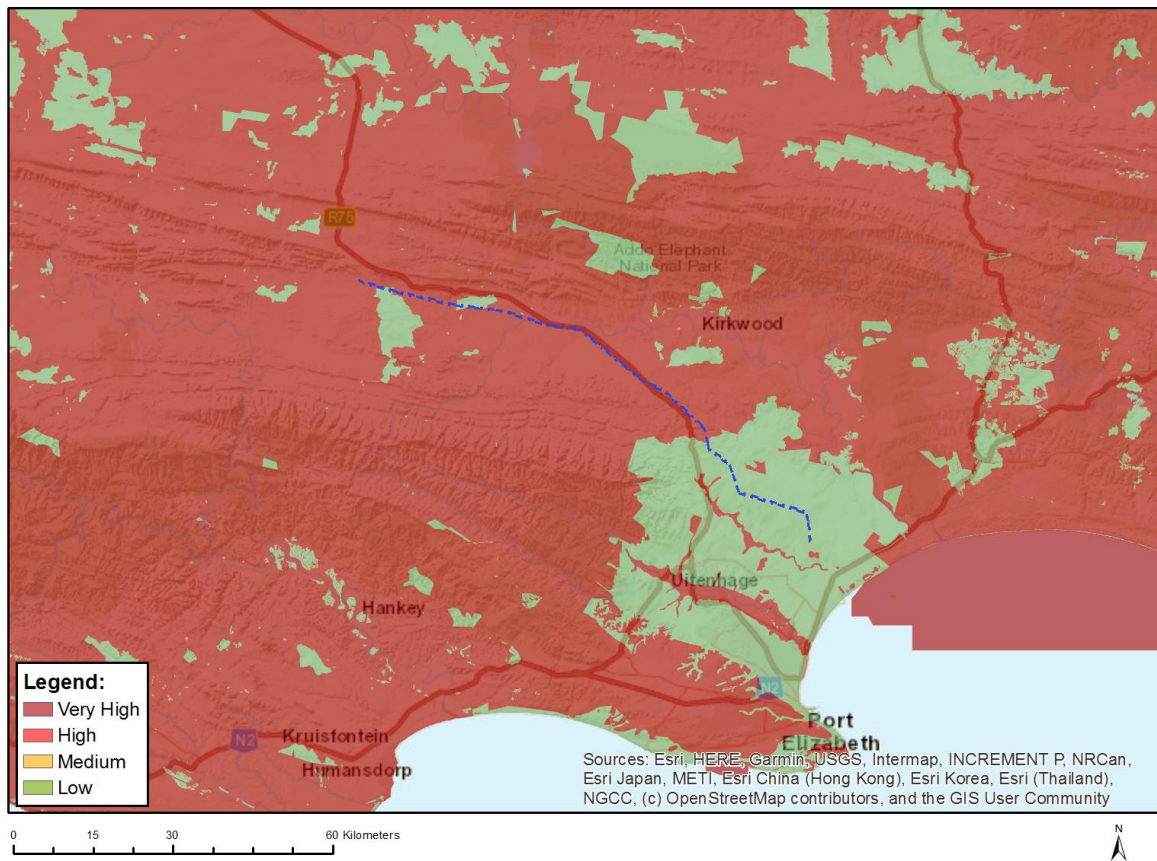
Very High sensitivity	High sensitivity	Medium sensitivity	Low sensitivity
	X		

Sensitivity Features:

Sensitivity	Feature(s)
High	<i>Syncarpha recurvata</i>
Low	Low Sensitivity
Medium	Sensitive species 1252
Medium	<i>Trichodiadema aureum</i>
Medium	<i>Rhombophyllum rhomboideum</i>
Medium	<i>Argyrobium barbatum</i>
Medium	Sensitive species 1235
Medium	Sensitive species 1268
Medium	<i>Selago zeyheri</i>
Medium	<i>Salvia obtusata</i>
Medium	<i>Apodolirion macowanii</i>
Medium	Sensitive species 570
Medium	Sensitive species 779

Medium	Rapanea gilliana
Medium	Marsilea schelpeana
Medium	Sensitive species 997
Medium	Duvalia pillansii
Medium	Syncarpha recurvata
Medium	Sensitive species 91
Medium	Zygophyllum divaricatum
Medium	Sensitive species 475
Medium	Sensitive species 234
Medium	Justicia orchioides subsp. orchioides
Medium	Strelitzia juncea
Medium	Corpuscularia lehmannii
Medium	Sensitive species 1101
Medium	Asparagus spinescens
Medium	Sensitive species 1248
Medium	Cotyledon tomentosa subsp. tomentosa
Medium	Sensitive species 19

MAP OF RELATIVE TERRESTRIAL BIODIVERSITY THEME SENSITIVITY



Very High sensitivity	High sensitivity	Medium sensitivity	Low sensitivity
X			

Sensitivity Features:

Sensitivity	Feature(s)

Low	Low Sensitivity
Very High	Critical biodiversity area 1
Very High	Critical biodiversity area 2
Very High	Ecological support area 1
Very High	FEPA Subcatchments
Very High	Endangered ecosystem

OFFICIAL