

Legend

- Veld PV North Energy Facility
- RE Farm 53 Haramoep
- Possible 132kV to Aggeneys
- Possible LILO to existing 220kV
- Access Road
- + + Existing Eskom 220kV
- PV Array
- Haramoep & Black Mountain Mine IBA
- NPAES Focus Areas (Kamiesberg Bushmanland Augrabies)

Data Source:
- SANBI BGIS

Kamiesberg Bushmanland Augrabies NPAES Focus Area.

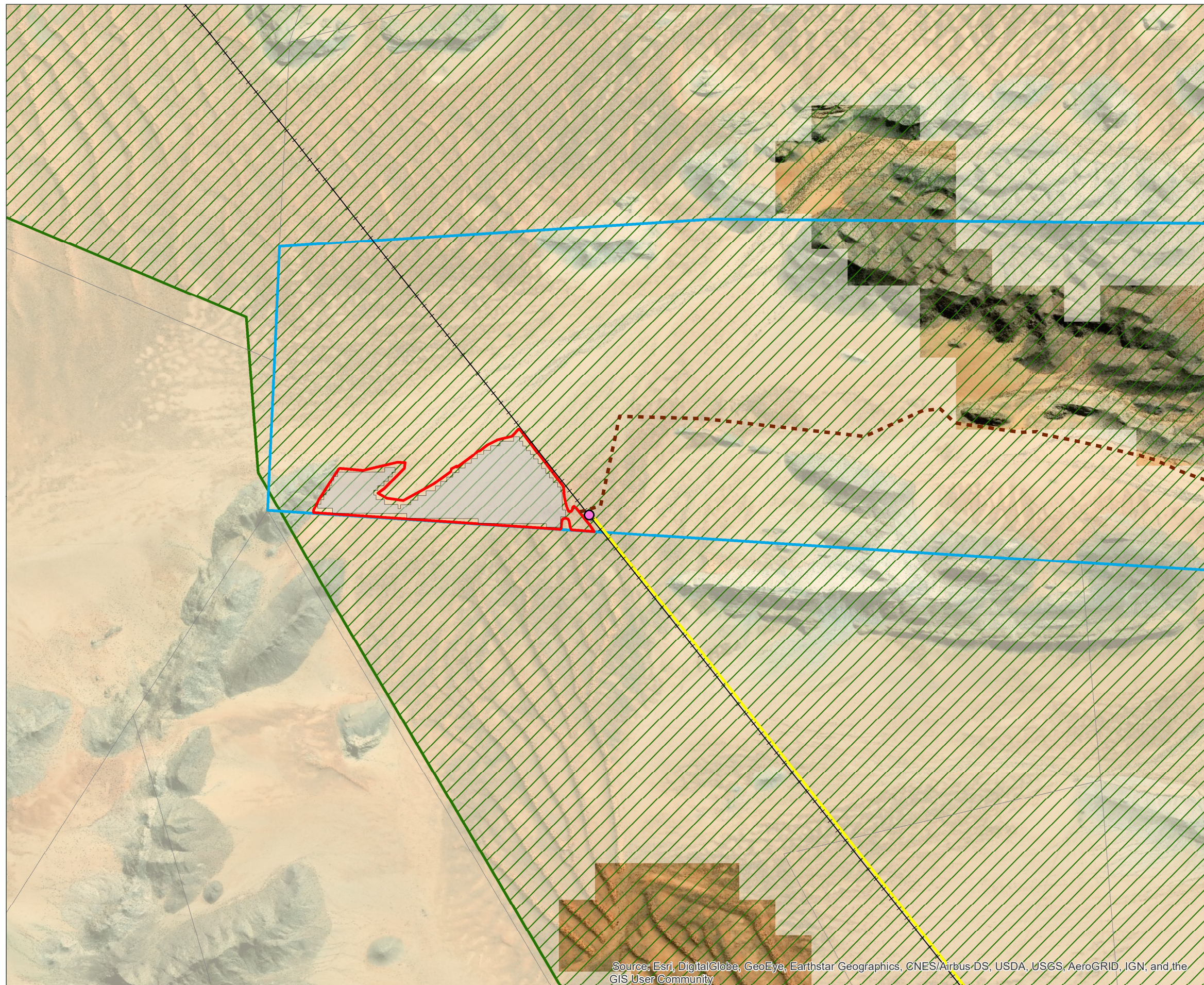
LILO - Loop in Loop Out

Either new 132kV to be constructed or LILO to existing 220kV depending on Eskom requirements at construction.

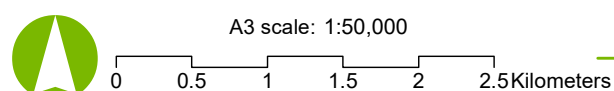
Access road to follow existing road/tracks as far as possible.

Date: 8/10/2019

Version: 0



Source: Esri, DigitalGlobe, GeoEye, Earthstar Geographics, CNES/Airbus-DS, USDA, USGS, AeroGRID, IGN, and the GIS User Community



A3 scale: 1:50,000

Job No: 113087

Projection: GCS_WGS_1984 Map by: WL

Veld PV North Energy Facility

National Protected Areas Expansion Strategy (NPAES) and Important Bird Areas (IBA)