

Legend

- Veld PV North Energy Facility
 - RE Farm 53 Haramoep
 - Possible 132kV to Aggeneys
 - Possible LILO to existing 220kV
 - Access Road
 - + Existing Eskom 220kV
 - PV Array
 - Aquatic Buffers
 - Visual Buffer (Dunes)
 - Hydrology Buffers
- Infrastructure**
- O and M Building
 - Substation
 - Temp. Construction Yard

Data Source:
- Specialist inputs.

No botanical buffers have been identified.

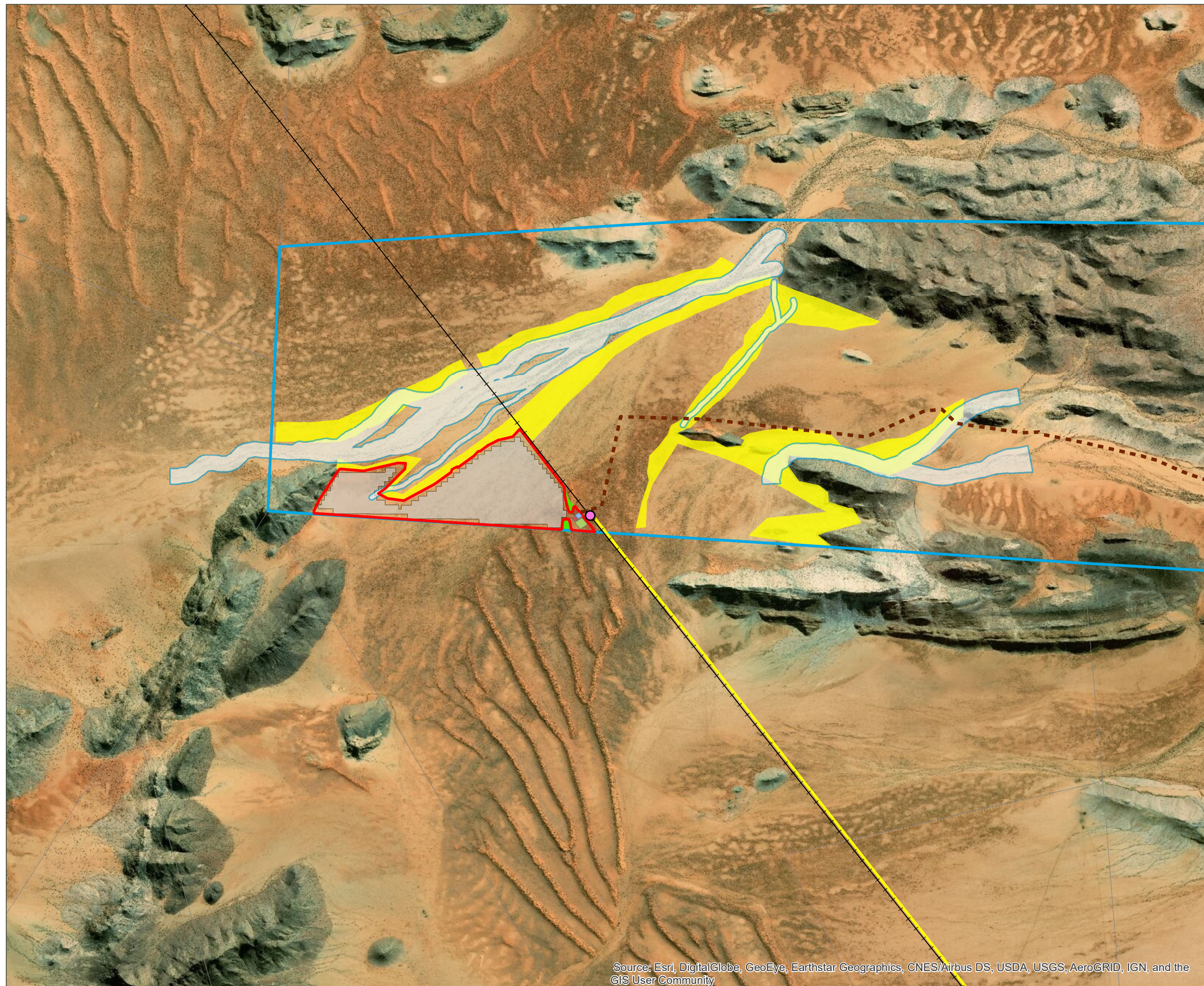
LILO - Loop in Loop Out

Either new 132kV to be constructed or LILO to existing 220kV depending on Eskom requirements at construction.

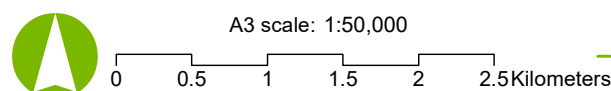
Access road to follow existing road/tracks as far as possible.

Date: 8/10/2019

Version: 0



Source: Esri, DigitalGlobe, GeoEye, Earthstar Geographics, CNES/Airbus DS, USDA, USGS, AeroGRID, IGN, and the GIS User Community



Job No: 113087

Projection: GCS_WGS_1984 Map by: WL