

Legend

- Veld PV South Energy Facility
 - RE Farm 53 Haramoep
 - Possible 132kV to Aggeneys
 - Powerline: Link to Existing Eskom 220kV
 - Possible LILO to existing 220kV
 - Access Road
 - PV Array
 - + Existing Eskom 220kV
 - Hydrology Buffers
 - Aquatic Buffers
- Infrastructure**
- O and M building
 - Substation
 - Temp. Construction Yard

Data Source:
- Specialist inputs.

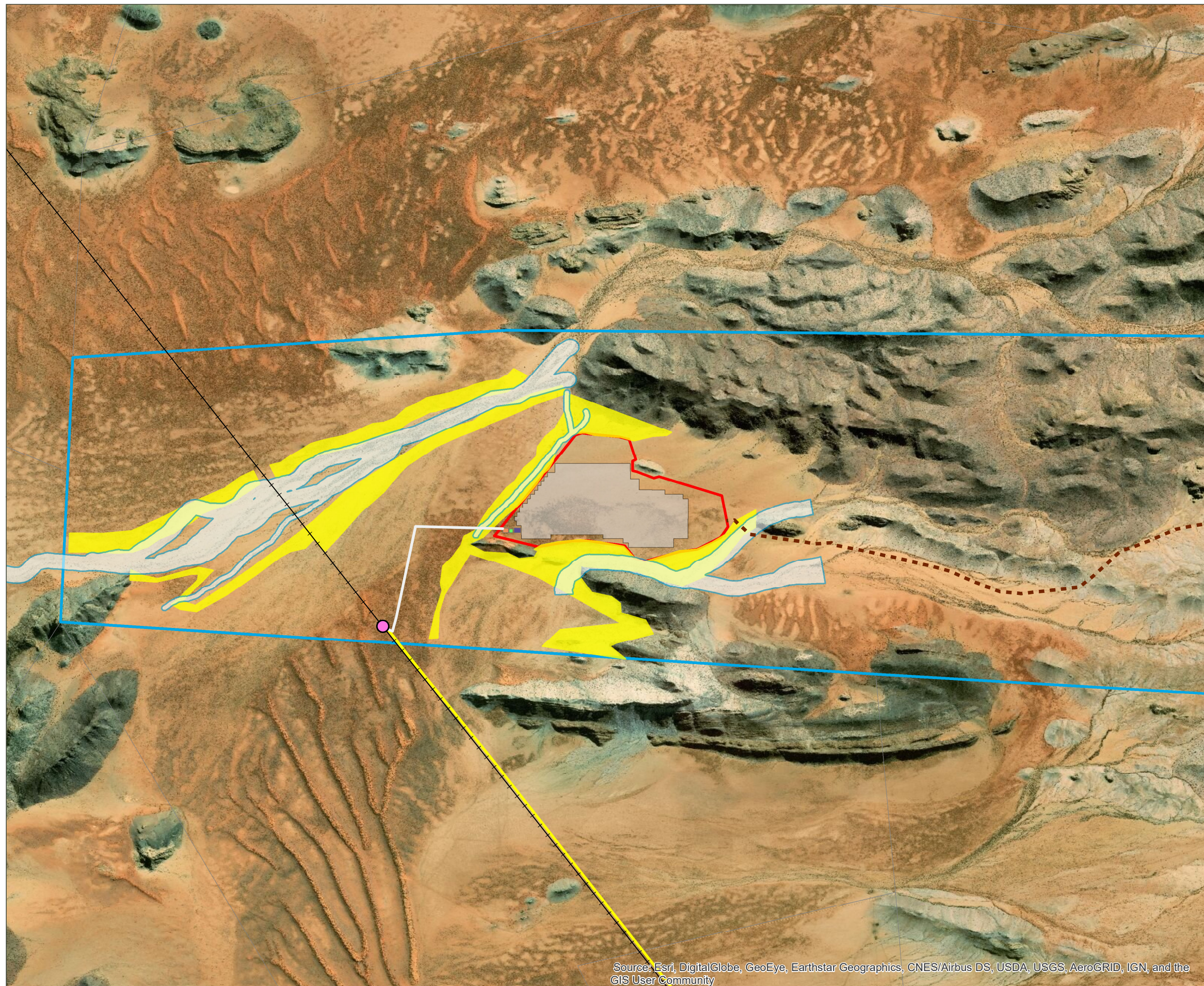
No botanical nor visual buffers have been identified.

LILO - Loop in Loop Out

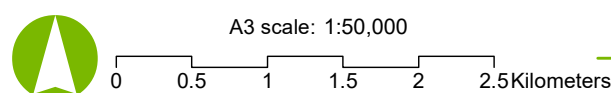
Either new 132kV to be constructed or LILO to existing 220kV depending on Eskom requirements at construction.

Access road to follow existing road/tracks as far as possible.

Date: 8/10/2019 Version: 0



Source: Esri, DigitalGlobe, GeoEye, Earthstar Geographics, CNES/Airbus DS, USDA, USGS, AeroGRID, IGN, and the GIS User Community



Job No: 113087
Projection: GCS_WGS_1984 Map by: WL