

GENERIC ENVIRONMENTAL MANAGEMENT PROGRAMME (EMPr) FOR THE DEVELOPMENT
AND EXPANSION OF **SUBSTATION INFRASTRUCTURE** FOR THE TRANSMISSION AND
DISTRIBUTION OF ELECTRICITY



environmental affairs

Department:
Environmental Affairs
REPUBLIC OF SOUTH AFRICA

Report Date: April 2022

TABLE OF CONTENTS

1	INTRODUCTION	1
1.1	Background	1
1.2	Purpose	1
1.3	Objective	1
1.4	Scope	1
1.5	Structure of this document	1
1.6	Completion of part B: section 1: the pre-approved generic EMPr template	3
1.7	Amendments of the impact management outcomes and impact management actions	4
1.8	Documents to be submitted as part of part B: section 2 site specific information and declaration	4
	PART A – GENERAL INFORMATION	1
2	DEFINITIONS	1
3	ACRONYMS and ABBREVIATIONS	2
4	ROLES AND RESPONSIBILITIES FOR ENVIRONMENTAL MANAGEMENT PROGRAMME (EMPr)	3
	IMPLEMENTATION	3
5	ENVIRONMENTAL DOCUMENTATION REPORTING AND COMPLIANCE	8
5.1	Document control/Filing system	8
5.2	Documentation to be available	8
5.3	Weekly Environmental Checklist	8
5.4	Environmental site meetings	8
5.5	Required Method Statements	8
5.6	Environmental Incident Log (Diary)	9
5.7	Non-compliance	10
5.8	Corrective action records	10
5.9	Photographic record	11
5.10	Complaints register	11
5.11	Claims for damages	11
5.12	Interactions with affected parties	12
5.13	Environmental audits	12
5.14	Final environmental audits	12
	PART B: SECTION 1: Pre-approved generic EMPr template	13
6	IMPACT MANAGEMENT OUTCOMES AND IMPACT MANAGEMENT ACTIONS	13
6.1	Environmental awareness training	14
6.2	Site Establishment development	15
6.3	Access restricted areas	16
6.4	Access roads	17
6.5	Fencing and Gate installation	18
6.6	Water Supply Management	19
6.7	Storm and waste water management	20
6.8	Solid and hazardous waste management	21
6.9	Protection of watercourses and estuaries	22
6.10	Vegetation clearing	24
6.11	Protection of fauna	25
6.12	Protection of heritage resources	26
6.13	Safety of the public	27
6.14	Sanitation	27
6.15	Prevention of disease	28
6.16	Emergency procedures	29
6.17	Hazardous substances	30

6.18	Workshop, equipment maintenance and storage	32
6.19	Batching plants.....	33
6.20	Dust emissions	34
6.21	Blasting.....	36
6.22	Noise	36
6.23	Fire prevention.....	37
6.24	Stockpiling and stockpile areas	37
6.25	Civil works	38
6.26	Excavation of foundation, cable trenching and drainage systems	39
6.27	Installation of foundations, cable trenching and drainage systems	40
6.28	Installation of equipment (circuit breakers, current Transformers, Isolators, Insulators, surge arresters, voltage transformers, earth switches)	41
6.29	Cabling and Stringing	42
6.30	Testing and Commissioning (all equipment testing, earthing system, system integration)	42
6.31	Socio-economic.....	43
6.32	Temporary closure of site	44
6.33	Dismantling of old equipment	45
6.34	Landscaping and rehabilitation.....	45
7	ACCESS TO THE GENERIC EMPr	48
	PART B: SECTION 2.....	49
8	SITE SPECIFIC INFORMATION AND DECLARATION	49
8.1	Sub-section 1: contact details and description of the project	49
8.1.1	<i>Details of the applicant:</i>	<i>49</i>
8.1.2	<i>Details and expertise of the EAP:</i>	<i>49</i>
8.1.3	<i>Project name:.....</i>	<i>49</i>
8.1.4	<i>Description of the project:.....</i>	<i>49</i>
8.1.5	<i>Project location:</i>	<i>50</i>
8.1.6	<i>DEVELOPMENT FOOTPRINT SITE MAPS</i>	<i>51</i>
	PART C: SITE SPECIFIC ENVIRONMENTAL ATTRIBUTES	58
9	SPECIFIC MITIGATION MEASURES AS LISTED IN THE ORIGINAL EIA DOCUMENT, PROVIDED BY SPECIALIST TEAM	58
	NOTE: The below sections could not be accessed in this Protected Word document and the relevant information has therefore been captured above.	58
7.1	<i>Sub-section 2: Development footprint site map.....</i>	<i>61</i>
7.2	<i>Sub-section 3: Declaration</i>	<i>62</i>
7.3	<i>Sub-section 4: amendments to site specific information (Part B; section 2)</i>	<i>62</i>
	PART C: SITE SPECIFIC ENVIRONMENTAL ATTRIBUTES	63
10	APPENDIX 1: METHOD STATEMENTS	64

LIST OF TABLES

Table 1: Guide to roles and responsibilities for implementation of an EMPr	3
--	---

LIST OF FIGURES

Figure 1 Final Project layout.....	51
Figure 2 Sensitive environmental areas and the proposed project overlain (Sensitivity Map 1).....	52
Figure 3 Sensitive environmental areas and the proposed project overlain (Sensitivity Map 2).....	53

1 INTRODUCTION

1.1 Background

The National Environmental Management Act, 1998 (Act No. 107 of 1998) (NEMA) requires that an environmental management programme (EMPr) be submitted where an environmental impact assessment (EIA) has been identified as the environmental instrument to be utilised as the basis for a decision on an application for environmental authorisation (EA). The content of an EMPr must either contain the information set out in Appendix 4 of the Environmental Impact Assessment Regulations, 2014, as amended (EIA Regulations) or must be a generic EMPr relevant to an application as identified and gazetted by the Minister in a government notice. Once the Minister has identified, through a government notice that a generic EMPr is relevant to an application for EA, that generic EMPr must be applied by all parties involved in the EA process, including but not limited to the applicant and the competent authority (CA).

1.2 Purpose

This document constitutes a generic EMPr relevant to applications for the development or expansion of substation infrastructure for the transmission and distribution of electricity, and all listed and specified activities necessary for the realisation of such infrastructure.

1.3 Objective

The objective of this generic EMPr is to prescribe and pre-approve generally accepted impact management outcomes and impact management actions, which can commonly and repeatedly be used for the avoidance, management and mitigation of impacts and risks associated with the development or expansion of substation infrastructure for the transmission and distribution of electricity. The use of a generic EMPr is intended to reduce the need to prepare and review individual EMPrs for applications of a similar nature.

1.4 Scope

The scope of this generic EMPr applies to the development or expansion of substation infrastructure for the transmission and distribution of electricity requiring EA in terms of NEMA. This generic EMPr applies to activities requiring EA, mainly activity 11 and 47 of the Environmental Impact Assessment Regulations Listing Notice 1 of 2014, as amended, and activity 9 of the Environmental Impact Assessment Regulations Listing Notice 2 of 2014, as amended, and all associated listed or specified activities necessary for the realization of such infrastructure.

1.5 Structure of this document

This document is structured in three parts with an Appendix as indicated in the table below:

Part	Section	Heading	Content
A		Provides general guidance and information and is not legally binding	Definitions, acronyms, roles & responsibilities and documentation and reporting.
B	1	Pre-approved generic EMPr template	Contains generally accepted impact management outcomes and impact management actions required for the avoidance, management and mitigation of impacts and risks associated with the development or expansion of substation infrastructure for the transmission and distribution of electricity, which are presented in the form of a template that has been pre-approved. The template in this section is to be completed by the contractor, with each completed page signed and dated

Part	Section	Heading	Content
			<p>by the holder of the EA prior to commencement of the activity.</p> <p>Where an impact management outcome is not relevant, the words “not applicable” can be inserted in the template under the “responsible persons” column.</p> <p>Once completed and signed, the template represents the EMPr for the activity approved by the CA and is legally binding. The template is not required to be submitted to the CA as once the generic EMPr is gazetted for implementation, it has been approved by the CA.</p> <p>To allow interested and affected parties access to the pre-approved EMPr template for consideration through the decision-making process, the EAP on behalf of the applicant /proponent must make the hard copy of this EMPr available at a public location and where the applicant has a website, the EMPr should also be made available on such publicly accessible website.</p>
	2	Site specific information	<p>Contains preliminary infrastructure layout and a declaration that the applicant/holder of the EA will comply with the pre-approved generic EMPr template contained in <u>Part B: Section 1</u>, and understands that the impact management outcomes and impact management actions are legally binding. The preliminary infrastructure layout must be finalized to inform the final EMPr that is to be submitted with the basic assessment report (BAR) or environmental impact assessment report (EIAR), ensuring that all impact management outcomes and impact management actions have been either pre-approved or approved in terms of <u>Part C</u>.</p> <p>This section must be submitted to the CA together with the final BAR or EIAR. The information submitted to the CA will be considered to be incomplete should a signed copy of <u>Part B: section 2</u> not be submitted. Once approved, this Section forms part of the EMPr for the development and is legally binding.</p>
C		Site specific sensitivities/ attributes	<p>If any specific environmental sensitivities/ attributes are present on the site which require site specific impact management outcomes and impact management actions, not included in the pre-approved generic EMPr, to manage impacts, these specific impact management outcomes and impact management actions must be included in this section. These specific environmental</p>

Part	Section	Heading	Content
			<p>attributes must be referenced spatially and impact management outcomes and impact management actions must be provided. These specific impact management outcomes and impact management actions must be presented in the format of the pre-approved EMPr template (Part B: section 1)</p> <p>This section will not be required should the site contain no specific environmental sensitivities or attributes. However, if Part C is applicable to the site, it is required to be submitted together with the BAR or EIAR, for consideration of, and decision on, the application for EA. The information in this section must be prepared by an EAP and must contain his/her name and expertise including a curriculum vitae. Once approved, Part C forms part of the EMPr for the site and is legally binding.</p> <p>This section applies only to additional impact management outcomes and impact management actions that are necessary for the avoidance, management and mitigation of impacts and risks associated with the specific development or expansion and which are not already included in Part B: section 1.</p>
		Appendix 1	Contains the method statements to be prepared prior to commencement of the activity. The method statements are not required to be submitted to the competent authority.

1.6 Completion of part B: section 1: the pre-approved generic EMPr template

The template is to be completed prior to commencement of the activity, by providing the following information for each environmental impact management action:

- For implementation
 - a 'responsible person',
 - a method for implementation,
 - a timeframe for implementation
- For monitoring
 - a responsible person
 - frequency
 - evidence of compliance.

The completed template must be signed and dated by the holder of the EA prior to commencement of the activity. The method statements prepared and agreed to by the holder of the EA must be appended to the template as [Appendix 1](#). Each method statement must be signed and dated on each page by the holder of the EA. This template once signed and dated is legally binding. The holder of the EA will remain responsible for its implementation.

1.7 Amendments of the impact management outcomes and impact management actions

Once the activity has commenced, a holder of an EA may make amendments to the impact management outcomes and impact management actions in the following manner:

- Amendment of the impact management outcomes: in line with the process contemplated in Regulation 37 of the EIA Regulations; and
- Amendment of the impact management actions: in line with the process contemplated in Regulation 36 of the EIA Regulations.

1.8 Documents to be submitted as part of part B: section 2 site specific information and declaration

Part B: Section 2 has three distinct sub-sections. The first and third sub-sections are in a template format. Sub-section two requires a map to be produced.

Sub-section 1 contains the project name, the applicant's name and contact details, the site information, which includes coordinates of the property or farm in which the proposed substation infrastructure is proposed as well as the 21-digit Surveyor General code of each cadastral land parcel and, where available, the farm name.

Sub-section 2 is to be prepared by an EAP and must contain his/her name and expertise including a curriculum vitae. This sub-section must include a map of the site sensitivity overlaid with the preliminary infrastructure layout using the national web based environmental screening tool, when available for compulsory use at: <https://screening.environment.gov.za/screeningtool>. The sensitivity map shall identify the nature of each sensitive feature e.g. threatened plant species, archaeological site, etc. Sensitivity maps shall identify features both within the planned working area and any known sensitive features and within 50 m from the development footprint.

Sub-section 3 is the declaration that the applicant (s)/proponent (s) or holder of the EA in the case of a change of ownership must complete which confirms that the applicant/EA holder will comply with the pre-approved 'generic EMPr' template in Section 1 and understands that the impact management outcomes and impact management actions are legally binding.

Amendments to Part B: Section 2 – site specific information and declaration

Should the EA be transferred, Part B: Section 2 must be completed by the new applicant/proponent and submitted with the application for an amendment of the EA in terms of regulations 29 or 31 of the EIA Regulations, whichever applies. The information submitted as part of such an application for an amendment to an EA will be considered to be incomplete should a signed copy of Part B: Section 2 not be submitted. Once approved, Part B: Section 2 forms part of the EMPr for the development and the EMPr becomes legally binding to the new EA holder.

PART A – GENERAL INFORMATION

2 DEFINITIONS

In this EMPr any word or expression to which a meaning has been assigned in the NEMA or EIA Regulations has that meaning, and unless the context requires otherwise –

“clearing” means the clearing and removal of vegetation, whether partially or in whole, including trees and shrubs, as specified;

“construction camp” is the area designated for key construction infrastructure and services, including but not limited to offices, overnight vehicle parking areas, stores, the workshop, stockpile and lay down areas, hazardous storage areas (including fuels), the batching plant (if one is located at the construction camp), designated access routes, equipment cleaning areas and the placement of staff accommodation, cooking and ablution facilities, waste and wastewater management;

“contractor” - The Contractor has overall responsibility for ensuring that all work, activities, and actions linked to the delivery of the contract, are in line with the Environmental Management Programme and that Method Statements are implemented as described.

“hazardous substance” is a substance governed by the Hazardous Substances Act, 1973 (Act No. 15 of 1973) as well as the Hazardous Chemical and Substances Regulations, 1995;

“method statement” means a written submission by the Contractor to the Project Manager in response to this EMPr or a request by the Project Manager and ECO. The method statement must set out the equipment, materials, labour and method(s) the Contractor proposes using to carry out an activity identified by the Project Manager when requesting the Method Statement. This must be done in such detail that the Project Manager and ECO is able to assess whether the Contractor's proposal is in accordance with this specification and/or will produce results in accordance with this specification;

The method statement must cover as a minimum applicable details with regard to:

- (i) Construction procedures;
- (ii) Plant, materials and equipment to be used;
- (iii) Transporting the equipment to and from site;
- (iv) How the plant/ material/ equipment will be moved while on site;
- (v) How and where the plant/ material/ equipment will be stored;
- (vi) The containment (or action to be taken if containment is not possible) of leaks or spills of any liquid or material that may occur;
- (vii) Timing and location of activities;
- (viii) Compliance/ non-compliance; and
- (ix) Any other information deemed necessary by the Project Manager.

“slope” means the inclination of a surface expressed as one unit of rise or fall for so many horizontal units;

“solid waste” means all solid waste, including construction debris, hazardous waste, excess cement/ concrete, wrapping materials, timber, cans, drums, wire, nails, food and domestic waste (e.g. plastic packets and wrappers);

“**spoil**” means excavated material which is unsuitable for use as material in the construction works or is material which is surplus to the requirements of the construction works;

“**topsoil**” means a varying depth (up to 300 mm) of the soil profile irrespective of the fertility, appearance, structure, agricultural potential, fertility and composition of the soil;

“**works**” means the works to be executed in terms of the Contract

3 ACRONYMS and ABBREVIATIONS

CA	Competent Authority
cEO	Contractors Environmental Officer
dEO	Developer Environmental Officer
DPM	Developer Project Manager
DSS	Developer Site Supervisor
EAR	Environmental Audit Report
ECA	Environmental Conservation Act No. 73 of 1989
ECO	Environmental Control Officer
EA	Environmental Authorisation
EIA	Environmental Impact Assessment
ERAP	Emergency Response Action Plan
EMPr	Environmental Management Programme Report
EAP	Environmental Assessment Practitioner
FPA	Fire Protection Agency
HCS	Hazardous chemical Substance
NEMA	National Environmental Management Act, 1998 (Act No. 107 of 1998)
NEMBA	National Environmental Management: Biodiversity Act ,2004 (Act No. 10 of 2004)
NEMWA	National Environmental Management: Waste Act, 2008 (Act No. 59 of 2008)
MSDS	Material Safety Data Sheet
RI&AP's	Registered Interested and affected parties

4 ROLES AND RESPONSIBILITIES FOR ENVIRONMENTAL MANAGEMENT PROGRAMME (EMPr) IMPLEMENTATION

The effective implementation of this generic EMPr is dependent on established and clear roles, responsibilities and reporting lines within an institutional framework. This section of the EMPr gives guidance to the various environmental roles and reporting lines, however, project specific requirements will ultimately determine the need for the appointment of specific person(s) to undertake specific roles and or responsibilities. As such, it must be noted that in the event that no specific person, for example, an environmental control officer (ECO) is appointed, the holder of the EA remains responsible for ensuring that the duties indicated in this document for action by the ECO are undertaken.

Table 1: Guide to roles and responsibilities for implementation of an EMPr

Responsible Person(s)	Role and Responsibilities
Developer's Project Manager (DPM)	<p><u>Role</u></p> <p>The Project Developer is accountable for ensuring compliance with the EMPr and any conditions of approval from the competent authority (CA). Where required, an environmental control officer (ECO) must be contracted by the Project Developer to objectively monitor the implementation of the EMPr according to relevant environmental legislation, and the conditions of the environmental authorisation (EA). The Project Developer is further responsible for providing and giving mandate to enable the ECO to perform responsibilities, and he must ensure that the ECO is integrated as part of the project team while remaining independent.</p> <p><u>Responsibilities</u></p> <ul style="list-style-type: none"> - Be fully conversant with the conditions of the EA; - Ensure that all stipulations within the EMPr are communicated and adhered to by the Developer and its Contractor(s); - Issuing of site instructions to the Contractor for corrective actions required; - Monitor the implementation of the EMPr throughout the project by means of site inspections and meetings. Overall management of the project and EMPr implementation; and - Ensure that periodic environmental performance audits are undertaken on the project implementation.
Developer Site Supervisor (DSS)	<p><u>Role</u></p> <p>The DSS reports directly to the DPM, oversees site works, liaises with the contractor(s) and the ECO. The DSS is responsible for the day to day implementation of the EMPr and for ensuring the compliance of all contractors with the conditions and requirements stipulated in the EMPr.</p>

Responsible Person(s)	Role and Responsibilities
	<p><u>Responsibilities</u></p> <ul style="list-style-type: none"> - Ensure that all contractors identify a contractor’s Environmental Officer (cEO); - Must be fully conversant with the conditions of the EA. Oversees site works, liaison with Contractor, DPM and ECO; - Must ensure that all landowners have the relevant contact details of the site staff, ECO and cEO; - Issuing of site instructions to the Contractor for corrective actions required; - Will issue all non-compliances to contractors; and - Ratify the Monthly Environmental Report.
Environmental Control Officer (ECO)	<p><u>Role</u></p> <p>The ECO should have appropriate training and experience in the implementation of environmental management specifications. The primary role of the ECO is to act as an independent quality controller and monitoring agent regarding all environmental concerns and associated environmental impacts. In this respect, the ECO is to conduct periodic site inspections, attend regular site meetings, pre-empt problems and suggest mitigation and be available to advise on incidental issues that arise. The ECO is also required to conduct compliance audits, verifying the monitoring reports submitted by the cEO. The ECO provides feedback to the DSS and Project Manager regarding all environmental matters. The Contractor, cEO and dEO are answerable to the Environmental Control Officer for non-compliance with the Performance Specifications as set out in the EA and EMPr.</p> <p>The ECO provides feedback to the DSS and Project Manager, who in turn reports back to the Contractor and potential and Registered Interested & Affected Parties’ (RI&AP’s), as required. Issues of non-compliance raised by the ECO must be taken up by the Project Manager, and resolved with the Contractor as per the conditions of his contract. Decisions regarding environmental procedures, specifications and requirements which have a cost implication (i.e. those that are deemed to be a variation, not allowed for in the Performance Specification) must be endorsed by the Project Manager. The ECO must also, as specified by the EA, report to the relevant CA as and when required.</p> <p><u>Responsibilities</u></p> <p>The responsibilities of the ECO will include the following:</p> <ul style="list-style-type: none"> - Be aware of the findings and conclusions of all EA related to the development; - Be familiar with the recommendations and mitigation measures of this EMPr; - Be conversant with relevant environmental legislation, policies and procedures, and ensure compliance with them; - Undertake regular and comprehensive site inspections / audits of the construction site according to the generic EMPr

Responsible Person(s)	Role and Responsibilities
	<p>and applicable licenses in order to monitor compliance as required;</p> <ul style="list-style-type: none"> - Educate the construction team about the management measures contained in the EMPr and environmental licenses; - Compilation and administration of an environmental monitoring plan to ensure that the environmental management measures are implemented and are effective; - Monitoring the performance of the Contractors and ensuring compliance with the EMPr and associated Method Statements; - In consultation with the Developer Site Supervisor order the removal of person(s) and/or equipment which are in contravention of the specifications of the EMPr and/or environmental licenses; - Liaison between the DPM, Contractors, authorities and other lead stakeholders on all environmental concerns; - Compile a regular environmental audit report highlighting any non-compliance issues as well as satisfactory or exceptional compliance with the EMPr; - Validating the regular site inspection reports, which are to be prepared by the contractor Environmental Officer (cEO); - Checking the cEO's record of environmental incidents (spills, impacts, legal transgressions etc.) as well as corrective and preventive actions taken; - Checking the cEO's public complaints register in which all complaints are recorded, as well as action taken; - Assisting in the resolution of conflicts; - Facilitate training for all personnel on the site – this may range from carrying out the training, to reviewing the training programmes of the Contractor; - In case of non-compliances, the ECO must first communicate this to the Senior Site Supervisor, who has the power to ensure this matter is addressed. Should no action or insufficient action be taken, the ECO may report this matter to the authorities as non-compliance; - Maintenance, update and review of the EMPr; - Communication of all modifications to the EMPr to the relevant stakeholders.
<p>developer Environmental Officer (dEO)</p>	<p><u>Role</u></p> <p>The dEOs will report to the Project Manager and are responsible for implementation of the EMPr, environmental monitoring and reporting, providing environmental input to the Project Manager and Contractor's Manager, liaising with contractors and the landowners as well as a range of environmental coordination responsibilities.</p> <p><u>Responsibilities</u></p>

Responsible Person(s)	Role and Responsibilities
	<ul style="list-style-type: none"> - Be fully conversant with the EMPr; - Be familiar with the recommendations and mitigation measures of this EMPr, and implement these measures; - Ensure that all stipulations within the EMPr are communicated and adhered to by the Employees, Contractor(s) ; - Confine the development site to the demarcated area; - Conduct environmental internal audits with regards to EMPr and authorisation compliance (on cEO); - Assist the contractors in addressing environmental challenges on site; - Assist in incident management: - Reporting environmental incidents to developer and ensuring that corrective action is taken, and lessons learnt shared; - Assist the contractor in investigating environmental incidents and compile investigation reports; - Follow-up on pre-warnings, defects, non-conformance reports; - Measure and communicate environmental performance to the Contractor; - Conduct environmental awareness training on site together with ECO and cEO; - Ensure that the necessary legal permits and / or licenses are in place and up to date; - Acting as Developer’s Environmental Representative on site and work together with the ECO and contractor;
Contractor	<p><u>Role</u></p> <p>The Contractor appoints the cEO and has overall responsibility for ensuring that all work, activities, and actions linked to the delivery of the contract are in line with the EMPr and that Method Statements are implemented as described. External contractors must ensure compliance with this EMPr while performing the onsite activities as per their contract with the Project Developer. The contractors are required, where specified, to provide Method Statements setting out in detail how the impact management actions contained in the EMPr will be implemented during the development or expansion of substation infrastructure for the transmission and distribution of electricity activities.</p> <p><u>Responsibilities</u></p> <ul style="list-style-type: none"> - project delivery and quality control for the development services as per appointment; - employ a suitably qualified person to monitor and report to the Project Developer’s appointed person on the daily activities on-site during the construction period; - ensure that safe, environmentally acceptable working methods and practices are implemented and that equipment is properly operated and maintained, to facilitate proper access and enable any operation to be carried out safely; - attend on site meeting(s) prior to the commencement of activities to confirm the procedure and designated activity

Responsible Person(s)	Role and Responsibilities
	<p>zones;</p> <ul style="list-style-type: none"> - ensure that contractors' staff repair, at their own cost, any environmental damage as a result of a contravention of the specifications contained in EMPr, to the satisfaction of the ECO.
<p>contractor Environmental Officer (cEO)</p>	<p><u>Role</u> Each Contractor affected by the EMPr should appoint a cEO, who is responsible for the on-site implementation of the EMPr (or relevant sections of the EMPr). The Contractor's representative can be the site agent; site engineer; a dedicated environmental officer; or an independent consultant. The Contractor must ensure that the Contractor's Representative is suitably qualified to perform the necessary tasks and is appointed at a level such that she/he can interact effectively with other site Contractors, labourers, the Environmental Control Officer and the public. As a minimum the cEO shall meet the following criteria:</p> <p><u>Responsibilities</u></p> <ul style="list-style-type: none"> - Be on site throughout the duration of the project and be dedicated to the project; - Ensure all their staff are aware of the environmental requirements, conditions and constraints with respect to all of their activities on site; - Implementing the environmental conditions, guidelines and requirements as stipulated within the EA, EMPr and Method Statements; - Attend the Environmental Site Meeting; - Undertaking corrective actions where non-compliances are registered within the stipulated timeframes; - Report back formally on the completion of corrective actions; - Assist the ECO in maintaining all the site documentation; - Prepare the site inspection reports and corrective action reports for submission to the ECO; - Assist the ECO with the preparing of the monthly report; and - Where more than one Contractor is undertaking work on site, each company appointed as a Contractor will appoint a cEO representing that company.

5 ENVIRONMENTAL DOCUMENTATION REPORTING AND COMPLIANCE

To ensure accountable and demonstrated implementation of the EMPr, a number of reporting systems, documentation controls and compliance mechanisms must be in place for all substation infrastructure projects as a minimum requirement.

5.1 Document control/Filing system

The holder of the EA is solely responsible for the upkeep and management of the EMPr file. As a minimum, all documentation detailed below will be stored in the EMPr file. A hard copy of all documentation shall be filed, while an electronic copy may be kept where relevant. A duplicate file will be maintained in the office of the DSS (where applicable). This duplicate file must remain current and up-to-date. The filing system must be updated and relevant documents added as required. The EMPr file must be made available at all times on request by the CA or other relevant authorities. The EMPr file will form part of any environmental audits undertaken as prescribed in the EIA Regulations.

5.2 Documentation to be available

At the outset of the project the following preliminary list of documents shall be placed in the filing system and be accessible at all times:

- Full copy of the signed EA from the CA in terms of NEMA, granting approval for the development or expansion;
- Copy of the generic and site specific EMPr as well as any amendments thereof;
- Copy of declaration of implementing generic EMPr and subsequent approval of site specific EMPr and amendments thereof;
- All method statements;
- Completed environmental checklists;
- Minutes and attendance register of environmental site meetings;
- An up-to-date environmental incident log;
- A copy of all instructions or directives issued;
- A copy of all corrective actions signed off. The corrective actions must be filed in such a way that a clear reference is made to the non-compliance record;
- Complaints register.

5.3 Weekly Environmental Checklist

The ECOs are required to complete a Weekly Environmental Checklist, the format of which is to be agreed prior to commencement of the activity. The ECOs are required to sign and date the checklist, retain a copy in the EMPr file and submit a copy of the completed checklist to the DSS on a weekly basis.

The checklists will form the basis for the Monthly Environmental Reports. Copies of all completed checklists will be attached as Annexures to the Environmental Audit Report as required in terms of the EIA Regulations.

5.4 Environmental site meetings

Minutes of the environmental site meetings shall be kept. The minutes must include an attendance register and will be attached to the Monthly Report that is distributed to attendees. Each set of minutes must clearly record "Matters for Attention" that will be reviewed at the next meeting.

5.5 Required Method Statements

The method statement will be done in such detail that the ECOs are enabled to assess whether the contractor's proposal is in accordance with the EMPr.

The method statement must cover applicable details with regard to:

- development procedures;
- materials and equipment to be used;
- getting the equipment to and from site;
- how the equipment/ material will be moved while on site;
- how and where material will be stored;
- the containment (or action to be taken if containment is not possible) of leaks or spills of any liquid or material that may occur;
- timing and location of activities;
- compliance/ non-compliance with the EMPr; and
- any other information deemed necessary by the ECOs.

Unless indicated otherwise by the Project Manager, the Contractor shall provide the following method statements to the Project Manager no less than 14 days prior to the commencement date of the activity:

- Site establishment – Camps, Lay-down or storage areas, satellite camps, infrastructure;
- Batch plants;
- Workshop or plant servicing;
- Handling, transport and storage of Hazardous Chemical Substance's;
- Vegetation management – Protected, clearing, aliens, felling;
- Access management – Roads, gates, crossings etc.;
- Fire plan;
- Waste management – transport, storage, segregation, classification, disposal (all waste streams);
- Social interaction – complaints management, compensation claims, access to properties etc.;
- Water – use (source, abstraction and disposal), access and all related information, crossings and mitigation;
- Emergency preparedness – Spills, training, other environmental emergencies;
- Dust and noise management methodologies;
- Fauna interaction and risk management – only if the risk was identified – wildlife interaction especially on game farms; and
- Heritage and palaeontology management.

The ECOs shall monitor and ensure that the contractors perform in accordance with these method statements. Completed and agreed method statements between the holder of the EA and the contractor shall be captured in Appendix 1.

5.6 Environmental Incident Log (Diary)

The ECOs are required to maintain an up-to-date and current Environmental Incident Log (environmental diary). The Environmental Incident Log is a means to record all environmental incidents and/or all non-compliance notice would not be issued. An environmental incident is defined as:

- Any deviation from the listed impact management actions (listed in this EMPr) that may be addressed immediately by the ECOs. (For example a contractor's staff member littering or a drip tray that has not been emptied);
- Any environmental impact resulting from an action or activity by a contractor in contravention of the environmental stipulations and guidelines listed in the EMPr which as a single event would have

a minor impact but which if cumulative and continuous would have a significant effect (for example no toilet paper available in the ablutions for an afternoon); and

- General environmental information such as road kills or injured wildlife.

The ECOs are to record all environmental incidents in the Environmental Incident Log. All incidents regardless of severity must be reported to the Developer. The Log is to be kept in the EMPr file and at a minimum the following will be recorded for each environmental incident:

- The date and time of the incident;
- Description of the incident;
- The name of the Contractor responsible;
- The incident must be listed as significant or minor;
- If the incident is listed as significant, a non-compliance notice must be issued, and recorded in the log;
- Remedial or corrective action taken to mitigate the incident; and
- Record of repeat minor offences by the same contractor or staff member.

The Environmental Incident Log will be captured in the EAR.

5.7 Non-compliance

A non-compliance notice will be issued to the responsible contractor by the ECOs via the DSS or Project Manager. The non-compliance notice will be issued in writing; a copy filed in the EMPr file and will at a minimum include the following:

- Time and date of the non-compliance;
- Name of the contractor responsible;
- Nature and description of the non-compliance;
- Recommended / required corrective action; and
- Date by which the corrective action to be completed.
- The contractors shall act immediately when a notice of non-compliance is received and correct whatever is the cause for the issuing of the notice. Complaints received regarding activities on the development site pertaining to the environment shall be recorded in a dedicated register and the response noted with the date and action taken. The ECO should be made aware of any complaints. Any non-compliance with the agreed procedures of the EMPr is a transgression of the various statutes and laws that define the manner by which the environment is managed. Failure to redress the cause shall be reported to the relevant CA for them to deal with the transgression, as it deems fit. The contractor is deemed not to have complied with the EMPr if, inter alia, There is a deviation from the environmental conditions, impact management outcomes and impact management actions activities, as approved in generic and site specific EMPr as relevant as set out in the EMPr, which deviation has, or may cause, an environmental impact.

5.8 Corrective action records

For each non-compliance notice issued, a documented corrective action must be recorded. On receiving a non-compliance notice from the DSS, the contractor's cEO will ensure that the corrective actions required take place within the stipulated timeframe. On completion of the corrective action the cEO is to issue a Corrective Action Report in writing to the ECOs. If satisfied that the corrective action has been completed, the ECOs are to sign-off on the Corrective Action Report, and attach the report to the non-compliance notice in the EMPr file. A corrective action is considered complete once the report has signed off by the ECOs.

5.9 Photographic record

A digital photographic record will be kept. The photographic record will be used to show before, during and post rehabilitation evidence of the project as well used in cases of damages claims if they arise. Each image must be dated and a brief description note attached.

The Contractor shall:

1. Allow the ECOs access to take photographs of all areas, activities and actions.

The ECOs shall keep an electronic database of photographic records which will include:

1. Pictures of all areas designated as work areas, camp areas, development sites and storage areas taken before these areas are set up;
2. All bunding and fencing;
3. Road conditions and road verges;
4. Condition of all farm fences;
5. Topsoil storage areas;
6. All areas to be cordoned off during construction;
7. Waste management sites;
8. Ablution facilities (inside and out);
9. Any non-conformances deemed to be "significant";
10. All completed corrective actions for non-compliances;
11. All required signage;
12. Photographic recordings of incidents;
13. All areas before, during and post rehabilitation; and
14. Include relevant photographs in the Final Environmental Audit Report.

5.10 Complaints register

The ECOs shall keep a current and up-to-date complaints register. The complaints register is to be a record of all complaints received from communities, stakeholders and individuals. The Complaints Record shall:

1. Record the name and contact details of the complainant;
2. Record the time and date of the complaint;
3. Contain a detailed description of the complaint;
4. Where relevant and appropriate, contain photographic evidence of the complaint or damage (ECOs to take relevant photographs); and
5. Contain a copy of the ECOs written response to each complaint received and keep a record of any further correspondence with the complainant. The ECO's written response will include a description of any corrective action to be taken and must be signed by the Contractor, ECO and affected party. Where a damage claim is issued by the complainant, the ECOs shall respond as described in **(section 4.11)** below.

5.11 Claims for damages

In the event that a Claim for Damages is submitted by a community, landowner or individual, the ECOs shall:

1. Record the full detail of the complaint as described in **(section 4.10)** above;
2. The DPM will evaluate the claim and associated damage and submit the evaluation to the Senior Site Representative for approval;

3. Following consideration by the DPM, the claim is to be resolved and settled immediately, or the reason for not accepting the claim communicated in writing to the claimant. Should the claimant not accept this, the ECO shall, in writing report the incident to the Developer's negotiator and legal department; and
4. A formal record of the response by the ECOs to the claimant as well as the rectification of the method of making payments not amount will be recorded in the EMPr file.

5.12 Interactions with affected parties

Open, transparent and good relations with affected landowners, communities and regional staff are an essential aspect to the successful management and mitigation of environmental impacts.

The ECOs shall:

1. Ensure that all queries, complaints and claims are dealt within an agreed timeframe;
2. Ensure that any or all agreements are documented, signed by all parties and a record of the agreement kept in the EMPr file;
3. Ensure that a complaints telephone numbers are made available to all landowners and affected parties; and
4. Ensure that contact with affected parties is courteous at all times;

5.13 Environmental audits

Internal environmental audits of the activity and implementation of the EMPr must be undertaken. The findings and outcomes included in the EMPr file and submitted to the CA at intervals as indicated in the EA.

The ECOs must prepare a monthly EAR. The report will be tabled as the key point on the agenda of the Environmental Site Meeting. The Report is submitted for acceptance at the meeting and the final report will be circulated to the Project Manager and filed in the EMPr file. At a frequency determined by the EA, the ECOs shall submit the monthly reports to the CA. At a minimum the monthly report is to cover the following:

- Weekly Environmental Checklists;
- Deviations and non-compliances with the checklists;
- Non-compliances issued;
- Completed and reported corrective actions;
- Environmental Monitoring;
- General environmental findings and actions; and
- Minutes of the Bi-monthly Environmental Site Meetings.

5.14 Final environmental audits

On final completion of the rehabilitation and/or requirements of the EA a final EAR is to be prepared and submitted to the CA. The EAR must comply with Appendix 7 of the EIA Regulations.

PART B: SECTION 1: Pre-approved generic EMPr template

6 IMPACT MANAGEMENT OUTCOMES AND IMPACT MANAGEMENT ACTIONS

This section provides a pre-approved generic EMPr template with aspects that are common to the development of substation infrastructure for the transmission and distribution of electricity. There is a list of aspects identified for the development or expansion of substation infrastructure for the transmission and distribution of electricity, and for each aspect a set of prescribed impact management outcomes and associated impact management actions have been identified. Holders of EAs are responsible to ensure the implementation of these outcomes and actions for all projects as a minimum requirement, in order to mitigate the impact of such aspects identified for the development or expansion of substation infrastructure for the transmission and distribution of electricity.

The template provided below is to be completed by providing the information under each heading for each environmental impact management action.

The completed template must be signed and dated on each page by both the contractor and the holder of the EA prior to commencement of the activity. The method statements prepared and agreed to by the holder of the EA must be appended to the template as Appendix 1. Each method statement must also be duly signed and dated on each page by the contractor and the holder of the EA. This template, once signed and dated, is legally binding. The holder of the EA will remain responsible for its implementation.

6.1 Environmental awareness training

Impact management outcome: All onsite staff are aware and understands the individual responsibilities in terms of this EMPr.

Impact Management Actions	Implementation			Monitoring		
	Responsible person	Method of implementation	Timeframe for implementation	Responsible person	Frequency	Evidence of compliance
<ul style="list-style-type: none"> – All staff must receive environmental awareness training prior to commencement of the activities; – The Contractor must allow for sufficient sessions to train all personnel with no more than 20 personnel attending each course; – Refresher environmental awareness training is available as and when required; – All staff are aware of the conditions and controls linked to the EA and within the EMPr and made aware of their individual roles and responsibilities in achieving compliance with the EA and EMPr; – The Contractor must erect and maintain information posters at key locations on site, and the posters must include the following information as a minimum: <ul style="list-style-type: none"> a) Safety notifications; and b) No littering. – Environmental awareness training must include as a minimum the following: <ul style="list-style-type: none"> a) Description of significant environmental impacts, actual or potential, related to their work activities; b) Mitigation measures to be implemented when carrying out specific activities; c) Emergency preparedness and response procedures; d) Emergency procedures; e) Procedures to be followed when working near or within sensitive areas; 						

<ul style="list-style-type: none"> f) Wastewater management procedures; g) Water usage and conservation; h) Solid waste management procedures; i) Sanitation procedures; j) Fire prevention; and k) Disease prevention. <ul style="list-style-type: none"> – A record of all environmental awareness training courses undertaken as part of the EMPr must be available; – Educate workers on the dangers of open and/or unattended fires; – A staff attendance register of all staff to have received environmental awareness training must be available. – Course material must be available and presented in appropriate languages that all staff can understand. 						
---	--	--	--	--	--	--

6.2 Site Establishment development

Impact management outcome: Impacts on the environment are minimised during site establishment and the development footprint are kept to demarcated development area.						
Impact Management Actions	Implementation			Monitoring		
	Responsible person	Method of implementation	Timeframe for implementation	Responsible person	Frequency	Evidence of compliance
<ul style="list-style-type: none"> – A method statement must be provided by the contractor prior to any onsite activity that includes the layout of the construction camp in the form of a plan showing the location of key infrastructure and services (where applicable), including but not limited to offices, overnight vehicle parking areas, stores, the workshop, stockpile and lay down areas, hazardous materials storage areas (including fuels), the batching plant (if one is located 						

<p>at the construction camp), designated access routes, equipment cleaning areas and the placement of staff accommodation, cooking and ablution facilities, waste and wastewater management;</p> <ul style="list-style-type: none"> – Location of camps must be within approved area to ensure that the site does not impact on sensitive areas identified in the environmental assessment or site walk through; – Sites must be located where possible on previously disturbed areas; – The camp must be fenced in accordance with Section 5.5: Fencing and gate installation; and – The use of existing accommodation for contractor staff, where possible, is encouraged. 						
---	--	--	--	--	--	--

6.3 Access restricted areas

<p>Impact management outcome: Access to restricted areas prevented.</p>						
Impact Management Actions	Implementation			Monitoring		
	Responsible person	Method of implementation	Timeframe for implementation	Responsible person	Frequency	Evidence of compliance
<ul style="list-style-type: none"> – Identification of access restricted areas is to be informed by the environmental assessment, site walk through and any additional areas identified during development; – Erect, demarcate and maintain a temporary barrier with clear signage around the perimeter of any access restricted area, colour coding could be used if appropriate; and – Unauthorised access and development related activity inside access restricted areas is prohibited. 						

--	--	--	--	--	--	--

6.4 Access roads

Impact management outcome: Minimise impact to the environment through the planned and restricted movement of vehicles on site.

Impact Management Actions	Implementation			Monitoring		
	Responsible person	Method of implementation	Timeframe for implementation	Responsible person	Frequency	Evidence of compliance
<ul style="list-style-type: none"> – An access agreement must be formalised and signed by the DPM, Contractor and landowner before commencing with the activities; – All private roads used for access to the servitude must be maintained and upon completion of the works, be left in at least the original condition – All contractors must be made aware of all these access routes. – Any access route deviation from that in the written agreement must be closed and re-vegetated immediately, at the contractor’s expense; – Maximum use of both existing servitudes and existing roads must be made to minimize further disturbance through the development of new roads; – In circumstances where private roads must be used, the condition of the said roads must be recorded in accordance with section 4.9: photographic record; prior to use and the condition thereof agreed by the landowner, the DPM, and the contractor; – Access roads in flattish areas must follow fence lines and tree 						

belts to avoid fragmentation of vegetated areas or croplands						
– Access roads must only be developed on a pre-planned and approved roads.						

6.5 Fencing and Gate installation

Impact management outcome: Minimise impact to the environment and ensure safe and controlled access to the site through the erection of fencing and gates where required.

Impact Management Actions	Implementation			Monitoring		
	Responsible person	Method of implementation	Timeframe for implementation	Responsible person	Frequency	Evidence of compliance
<ul style="list-style-type: none"> – Use existing gates provided to gain access to all parts of the area authorised for development, where possible; – Existing and new gates to be recorded and documented in accordance with section 4.9: photographic record; – All gates must be fitted with locks and be kept locked at all times during the development phase, unless otherwise agreed with the landowner; – At points where the line crosses a fence in which there is no suitable gate within the extent of the line servitude, on the instruction of the DPM, a gate must be installed at the approval of the landowner; – Care must be taken that the gates must be so erected that there is a gap of no more than 100 mm between the bottom of the gate and the ground; 						

<ul style="list-style-type: none"> - Where gates are installed in jackal proof fencing, a suitable reinforced concrete sill must be provided beneath the gate; - Original tension must be maintained in the fence wires; - All gates installed in electrified fencing must be re-electrified; - All demarcation fencing and barriers must be maintained in good working order for the duration of the development activities; - Fencing must be erected around the camp, batching plants, hazardous storage areas, and all designated access restricted areas, where applicable; - Any temporary fencing to restrict the movement of life-stock must only be erected with the permission of the land owner. - All fencing must be developed of high quality material bearing the SABS mark; - The use of razor wire as fencing must be avoided; - Fenced areas with gate access must remain locked after hours, during weekends and on holidays if staff is away from site. Site security will be required at all times; - On completion of the development phase all temporary fences are to be removed; - The contractor must ensure that all fence uprights are appropriately removed, ensuring that no uprights are cut at ground level but rather removed completely. 						
---	--	--	--	--	--	--

6.6 Water Supply Management

Impact management outcome: Undertake responsible water usage.		
Impact Management Actions	Implementation	Monitoring

	Responsible person	Method of implementation	Timeframe for implementation	Responsible person	Frequency	Evidence of compliance
<ul style="list-style-type: none"> - All abstraction points or bore holes must be registered with the DWS and suitable water meters installed to ensure that the abstracted volumes are measured on a daily basis; - The Contractor must ensure the following: <ul style="list-style-type: none"> a. The vehicle abstracting water from a river does not enter or cross it and does not operate from within the river; b. No damage occurs to the river bed or banks and that the abstraction of water does not entail stream diversion activities; and c. All reasonable measures to limit pollution or sedimentation of the downstream watercourse are implemented. - Ensure water conservation is being practiced by: <ul style="list-style-type: none"> a. Minimising water use during cleaning of equipment; b. Undertaking regular audits of water systems; and c. Including a discussion on water usage and conservation during environmental awareness training. d. The use of grey water is encouraged. 						

6.7 Storm and waste water management

Impact management outcome: Impacts to the environment caused by storm water and wastewater discharges during construction are avoided.						
Impact Management Actions	Implementation			Monitoring		
	Responsible person	Method of implementation	Timeframe for implementation	Responsible person	Frequency	Evidence of compliance
<ul style="list-style-type: none"> - Runoff from the cement/ concrete batching areas must be strictly controlled, and contaminated water must be collected, 						

<p>stored and either treated or disposed of off-site, at a location approved by the project manager;</p> <ul style="list-style-type: none"> - All spillage of oil onto concrete surfaces must be controlled by the use of an approved absorbent material and the used absorbent material disposed of at an appropriate waste disposal facility; - Natural storm water runoff not contaminated during the development and clean water can be discharged directly to watercourses and water bodies, subject to the Project Manager's approval and support by the ECO; - Water that has been contaminated with suspended solids, such as soils and silt, may be released into watercourses or water bodies only once all suspended solids have been removed from the water by settling out these solids in settlement ponds. The release of settled water back into the environment must be subject to the Project Manager's approval and support by the ECO. 						
---	--	--	--	--	--	--

6.8 Solid and hazardous waste management

<p>Impact management outcome: Wastes are appropriately stored, handled and safely disposed of at a recognised waste facility.</p>						
<p>Impact Management Actions</p>	<p>Implementation</p>			<p>Monitoring</p>		
	<p>Responsible person</p>	<p>Method of implementation</p>	<p>Timeframe for implementation</p>	<p>Responsible person</p>	<p>Frequency</p>	<p>Evidence of compliance</p>
<ul style="list-style-type: none"> - All measures regarding waste management must be undertaken using an integrated waste management approach; - Sufficient, covered waste collection bins (scavenger and weatherproof) must be provided; 						

<ul style="list-style-type: none"> - A suitably positioned and clearly demarcated waste collection site must be identified and provided; - The waste collection site must be maintained in a clean and orderly manner; - Waste must be segregated into separate bins and clearly marked for each waste type for recycling and safe disposal; - Staff must be trained in waste segregation; - Bins must be emptied regularly; - General waste produced onsite must be disposed of at registered waste disposal sites/ recycling company; - Hazardous waste must be disposed of at a registered waste disposal site; - Certificates of safe disposal for general, hazardous and recycled waste must be maintained. 						
--	--	--	--	--	--	--

6.9 Protection of watercourses and estuaries

Impact management outcome: Pollution and contamination of the watercourse environment and or estuary erosion are prevented.						
Impact Management Actions	Implementation			Monitoring		
	Responsible person	Method of implementation	Timeframe for implementation	Responsible person	Frequency	Evidence of compliance
<ul style="list-style-type: none"> - All watercourses must be protected from direct or indirect spills of pollutants such as solid waste, sewage, cement, oils, fuels, chemicals, aggregate tailings, wash and contaminated water or organic material resulting from the Contractor’s activities; - In the event of a spill, prompt action must be taken to clear the polluted or affected areas; - Where possible, no development equipment must traverse any 						

<p>seasonal or permanent wetland</p> <ul style="list-style-type: none"> - No return flow into the estuaries must be allowed and no disturbance of the Estuarine functional Zone should occur; - Development of permanent watercourse or estuary crossing must only be undertaken where no alternative access to tower position is available; - There must not be any impact on the long term morphological dynamics of watercourses or estuaries; - Existing crossing points must be favored over the creation of new crossings (including temporary access) - When working in or near any watercourse or estuary, the following environmental controls and consideration must be taken: <ul style="list-style-type: none"> a) Water levels during the period of construction; No altering of the bed, banks, course or characteristics of a watercourse b) During the execution of the works, appropriate measures to prevent pollution and contamination of the riparian environment must be implemented e.g. including ensuring that construction equipment is well maintained; c) Where earthwork is being undertaken in close proximity to any watercourse, slopes must be stabilised using suitable materials, i.e. sandbags or geotextile fabric, to prevent sand and rock from entering the channel; and d) Appropriate rehabilitation and re-vegetation measures for the watercourse banks must be implemented timeously. In this regard, the banks should be appropriately and incrementally stabilised as soon as development allows. 						
--	--	--	--	--	--	--

6.10 Vegetation clearing

Impact management outcome: Vegetation clearing is restricted to the authorised development footprint of the proposed infrastructure.

Impact Management Actions	Implementation			Monitoring		
	Responsible person	Method of implementation	Timeframe for implementation	Responsible person	Frequency	Evidence of compliance
<p>General:</p> <ul style="list-style-type: none"> – Indigenous vegetation which does not interfere with the development must be left undisturbed; – Protected or endangered species may occur on or near the development site. Special care should be taken not to damage such species; – Search, rescue and replanting of all protected and endangered species likely to be damaged during project development must be identified by the relevant specialist and completed prior to any development or clearing; – Permits for removal must be obtained from the relevant CA prior to the cutting or clearing of the affected species, and they must be filed; – The Environmental Audit Report must confirm that all identified species have been rescued and replanted and that the location of replanting is compliant with conditions of approvals; – Trees felled due to construction must be documented and form part of the Environmental Audit Report; – Rivers and watercourses must be kept clear of felled trees, vegetation cuttings and debris; – Only a registered pest control operator may apply herbicides on a commercial basis and commercial application must be carried 						

<p>out under the supervision of a registered pest control operator, supervision of a registered pest control operator or is appropriately trained;</p> <ul style="list-style-type: none"> - A daily register must be kept of all relevant details of herbicide usage; - No herbicides must be used in estuaries; - All protected species and sensitive vegetation not removed must be clearly marked and such areas fenced off in accordance to Section 5.3: Access restricted areas. <p>Alien invasive vegetation must be removed and disposed of at a licensed waste management facility.</p>						
---	--	--	--	--	--	--

6.11 Protection of fauna

Impact management outcome: Disturbance to fauna is minimised.						
Impact Management Actions	Implementation			Monitoring		
	Responsible person	Method of implementation	Timeframe for implementation	Responsible person	Frequency	Evidence of compliance
<ul style="list-style-type: none"> - No interference with livestock must occur without the landowner's written consent and with the landowner or a person representing the landowner being present; - The breeding sites of raptors and other wild birds species must be taken into consideration during the planning of the development programme; - Breeding sites must be kept intact and disturbance to breeding birds must be avoided. Special care must be taken where nestlings or fledglings are present; - Special recommendations of the avian specialist must be 						

<p>adhered to at all times to prevent unnecessary disturbance of birds;</p> <ul style="list-style-type: none"> - No poaching must be tolerated under any circumstances. All animal dens in close proximity to the works areas must be marked as Access restricted areas; - No deliberate or intentional killing of fauna is allowed; - In areas where snakes are abundant, snake deterrents to be deployed on the pylons to prevent snakes climbing up, being electrocuted and causing power outages; and - No Threatened or Protected species (ToPs) and/or protected fauna as listed according NEMBA (Act No. 10 of 2004) and relevant provincial ordinances may be removed and/or relocated without appropriate authorisations/permits. 						
--	--	--	--	--	--	--

6.12 Protection of heritage resources

Impact management outcome: Impact to heritage resources is minimised.

Impact Management Actions	Implementation			Monitoring		
	Responsible person	Method of implementation	Timeframe for implementation	Responsible person	Frequency	Evidence of compliance
<ul style="list-style-type: none"> - Identify, demarcate and prevent impact to all known sensitive heritage features on site in accordance with the No-Go procedure in Section 5.3: Access restricted areas; - Carry out general monitoring of excavations for potential fossils, artefacts and material of heritage importance; - All work must cease immediately, if any human remains and/or other archaeological, palaeontological and historical material are uncovered. Such material, if exposed, must be reported to 						

the nearest museum, archaeologist/ palaeontologist (or the South African Police Services), so that a systematic and professional investigation can be undertaken. Sufficient time must be allowed to remove/collect such material before development recommences.						
---	--	--	--	--	--	--

6.13 Safety of the public

Impact management outcome: All precautions are taken to minimise the risk of injury, harm or complaints.

Impact Management Actions	Implementation			Monitoring		
	Responsible person	Method of implementation	Timeframe for implementation	Responsible person	Frequency	Evidence of compliance
<ul style="list-style-type: none"> – Identify fire hazards, demarcate and restrict public access to these areas as well as notify the local authority of any potential threats e.g. large brush stockpiles, fuels etc.; – All unattended open excavations must be adequately fenced or demarcated; – Adequate protective measures must be implemented to prevent unauthorised access to and climbing of partly constructed towers and protective scaffolding; – Ensure structures vulnerable to high winds are secured; – Maintain an incidents and complaints register in which all incidents or complaints involving the public are logged. 						

6.14 Sanitation

Impact management outcome: Clean and well maintained toilet facilities are available to all staff in an effort to minimise the risk of disease and impact to the environment.

Impact Management Actions	Implementation	Monitoring
---------------------------	----------------	------------

	Responsible person	Method of implementation	Timeframe for implementation	Responsible person	Frequency	Evidence of compliance
<ul style="list-style-type: none"> - Mobile chemical toilets are installed onsite if no other ablution facilities are available; - The use of ablution facilities and or mobile toilets must be used at all times and no indiscriminate use of the veld for the purposes of ablutions must be permitted under any circumstances; - Where mobile chemical toilets are required, the following must be ensured: <ul style="list-style-type: none"> a) Toilets are located no closer than 100 m to any watercourse or water body; b) Toilets are secured to the ground to prevent them from toppling due to wind or any other cause; c) No spillage occurs when the toilets are cleaned or emptied and the contents are managed in accordance with the EMPr; d) Toilets have an external closing mechanism and are closed and secured from the outside when not in use to prevent toilet paper from being blown out; e) Toilets are emptied before long weekends and workers holidays, and must be locked after working hours; f) Toilets are serviced regularly and the ECO must inspect toilets to ensure compliance to health standards; - A copy of the waste disposal certificates must be maintained. 						

6.15 Prevention of disease

Impact Management outcome: All necessary precautions linked to the spread of disease are taken.

Impact Management Actions	Implementation			Monitoring		
	Responsible person	Method of implementation	Timeframe for implementation	Responsible person	Frequency	Evidence of compliance
<ul style="list-style-type: none"> – Undertake environmentally-friendly pest control in the camp area; – Ensure that the workforce is sensitised to the effects of sexually transmitted diseases, especially HIV AIDS; – The Contractor must ensure that information posters on AIDS are displayed in the Contractor Camp area; – Information and education relating to sexually transmitted diseases to be made available to both construction workers and local community, where applicable; – Free condoms must be made available to all staff on site at central points; – Medical support must be made available; – Provide access to Voluntary HIV Testing and Counselling Services. 						

6.16 Emergency procedures

Impact management outcome: Emergency procedures are in place to enable a rapid and effective response to all types of environmental emergencies.						
Impact Management Actions	Implementation			Monitoring		
	Responsible person	Method of implementation	Timeframe for implementation	Responsible person	Frequency	Evidence of compliance

<ul style="list-style-type: none"> – Compile an Emergency Response Action Plan (ERAP) prior to the commencement of the proposed project; – The Emergency Plan must deal with accidents, potential spillages and fires in line with relevant legislation; – All staff must be made aware of emergency procedures as part of environmental awareness training; – The relevant local authority must be made aware of a fire as soon as it starts; – In the event of emergency necessary mitigation measures to contain the spill or leak must be implemented (see Hazardous Substances section 5.17). 						
--	--	--	--	--	--	--

6.17 Hazardous substances

Impact management outcome: Safe storage, handling, use and disposal of hazardous substances.						
Impact Management Actions	Implementation			Monitoring		
	Responsible person	Method of implementation	Timeframe for implementation	Responsible person	Frequency	Evidence of compliance
<ul style="list-style-type: none"> – The use and storage of hazardous substances to be minimised and non-hazardous and non-toxic alternatives substituted where possible; – All hazardous substances must be stored in suitable containers as defined in the Method Statement; – Containers must be clearly marked to indicate contents, quantities and safety requirements; – All storage areas must be bunded. The bunded area must be of sufficient capacity to contain a spill / leak from the stored containers; 						

<ul style="list-style-type: none"> – Bunded areas to be suitably lined with a SABS approved liner; – An Alphabetical Hazardous Chemical Substance (HCS) control sheet must be drawn up and kept up to date on a continuous basis; – All hazardous chemicals that will be used on site must have Material Safety Data Sheets (MSDS); – All employees working with HCS must be trained in the safe use of the substance and according to the safety data sheet; – Employees handling hazardous substances / materials must be aware of the potential impacts and follow appropriate safety measures. Appropriate personal protective equipment must be made available; – The Contractor must ensure that diesel and other liquid fuel, oil and hydraulic fluid is stored in appropriate storage tanks or in bowsers; – The tanks/ bowsers must be situated on a smooth impermeable surface (concrete) with a permanent bund. The impermeable lining must extend to the crest of the bund and the volume inside the bund must be 130% of the total capacity of all the storage tanks/ bowsers (110% statutory requirement plus an allowance for rainfall); – The floor of the bund must be sloped, draining to an oil separator; – Provision must be made for refueling at the storage area by protecting the soil with an impermeable groundcover. Where dispensing equipment is used, a drip tray must be used to ensure small spills are contained; – All empty externally dirty drums must be stored on a drip tray or within a bunded area; – No unauthorised access into the hazardous substances storage areas must be permitted; 						
--	--	--	--	--	--	--

<ul style="list-style-type: none"> - No smoking must be allowed within the vicinity of the hazardous storage areas; - Adequate fire-fighting equipment must be made available at all hazardous storage areas; - Where refueling away from the dedicated refueling station is required, a mobile refueling unit must be used. Appropriate ground protection such as drip trays must be used; - An appropriately sized spill kit kept onsite relevant to the scale of the activity/s involving the use of hazardous substance must be available at all times; - The responsible operator must have the required training to make use of the spill kit in emergency situations; - An appropriate number of spill kits must be available and must be located in all areas where activities are being undertaken; - In the event of a spill, contaminated soil must be collected in containers and stored in a central location and disposed of according to the National Environmental Management: Waste Act 59 of 2008. Refer to Section 5.7 for procedures concerning storm and waste water management and 5.8 for solid and hazardous waste management. 						
---	--	--	--	--	--	--

6.18 Workshop, equipment maintenance and storage

Impact management outcome: Soil, surface water and groundwater contamination is minimised.						
Impact Management Actions	Implementation			Monitoring		
	Responsible person	Method of implementation	Timeframe for implementation	Responsible person	Frequency	Evidence of compliance
<ul style="list-style-type: none"> - Where possible and practical all maintenance of vehicles and 						

<p>equipment must take place in the workshop area;</p> <ul style="list-style-type: none"> – During servicing of vehicles or equipment, especially where emergency repairs are effected outside the workshop area, a suitable drip tray must be used to prevent spills onto the soil. The relevant local authority must be made aware of a fire as soon as it starts; – Leaking equipment must be repaired immediately or be removed from site to facilitate repair; – Workshop areas must be monitored for oil and fuel spills; – Appropriately sized spill kit kept onsite relevant to the scale of the activity taking place must be available; – The workshop area must have a bunded concrete slab that is sloped to facilitate runoff into a collection sump or suitable oil / water separator where maintenance work on vehicles and equipment can be performed; – Water drainage from the workshop must be contained and managed in accordance Section 5.7: Storm and waste water management. 						
---	--	--	--	--	--	--

6.19 Batching plants

<p>Impact management outcome: Minimise spillages and contamination of soil, surface water and groundwater.</p>						
Impact Management Actions	Implementation			Monitoring		
	Responsible person	Method of implementation	Timeframe for implementation	Responsible person	Frequency	Evidence of compliance
<ul style="list-style-type: none"> – Concrete mixing must be carried out on an impermeable surface; – Batching plants areas must be fitted with a containment facility 						

<p>for the collection of cement laden water.</p> <ul style="list-style-type: none"> – Dirty water from the batching plant must be contained to prevent soil and groundwater contamination – Bagged cement must be stored in an appropriate facility and at least 10 m away from any water courses, gullies and drains; – A washout facility must be provided for washing of concrete associated equipment. Water used for washing must be restricted; – Hardened concrete from the washout facility or concrete mixer can either be reused or disposed of at an appropriate licenced disposal facility; – Empty cement bags must be secured with adequate binding material if these will be temporarily stored on site; – Sand and aggregates containing cement must be kept damp to prevent the generation of dust (Refer to Section 5.20: Dust emissions) – Any excess sand, stone and cement must be removed or reused from site on completion of construction period and disposed at a registered disposal facility; – Temporary fencing must be erected around batching plants in accordance with Section 5.5: Fencing and gate installation. 						
--	--	--	--	--	--	--

6.20 Dust emissions

<p>Impact management outcome: Dust prevention measures are applied to minimise the generation of dust.</p>						
<p>Impact Management Actions</p>	<p>Implementation</p>			<p>Monitoring</p>		
	<p>Responsible person</p>	<p>Method of implementation</p>	<p>Timeframe for implementation</p>	<p>Responsible person</p>	<p>Frequency</p>	<p>Evidence of compliance</p>
<ul style="list-style-type: none"> – Take all reasonable measures to minimise the generation of dust as a result of project development activities to the 						

<p>satisfaction of the ECO;</p> <ul style="list-style-type: none"> – Removal of vegetation must be avoided until such time as soil stripping is required and similarly exposed surfaces must be re-vegetated or stabilised as soon as is practically possible; – Excavation, handling and transport of erodible materials must be avoided under high wind conditions or when a visible dust plume is present; – During high wind conditions, the ECO must evaluate the situation and make recommendations as to whether dust-damping measures are adequate, or whether working will cease altogether until the wind speed drops to an acceptable level; – Where possible, soil stockpiles must be located in sheltered areas where they are not exposed to the erosive effects of the wind; – Where erosion of stockpiles becomes a problem, erosion control measures must be implemented at the discretion of the ECO; – Vehicle speeds must not exceed 40 km/h along dust roads or 20 km/h when traversing unconsolidated and non-vegetated areas; – Straw stabilisation must be applied at a rate of one bale/10 m² and harrowed into the top 100 mm of top material, for all completed earthworks; – For significant areas of excavation or exposed ground, dust suppression measures must be used to minimise the spread of dust. 						
---	--	--	--	--	--	--

6.21 Blasting

Impact management outcome: Impact to the environment is minimised through a safe blasting practice.						
Impact Management Actions	Implementation			Monitoring		
	Responsible person	Method of implementation	Timeframe for implementation	Responsible person	Frequency	Evidence of compliance
<ul style="list-style-type: none"> - Any blasting activity must be conducted by a suitably licensed blasting contractor; and - Notification of surrounding landowners, emergency services site personnel of blasting activity 24 hours prior to such activity taking place on Site. 						

6.22 Noise

Impact Management outcome: Prevent unnecessary noise to the environment by ensuring that noise from development activity is mitigated.						
Impact Management Actions	Implementation			Monitoring		
	Responsible person	Method of implementation	Timeframe for implementation	Responsible person	Frequency	Evidence of compliance
<ul style="list-style-type: none"> - The Contractor must keep noise level within acceptable limits, Restrict the use of sound amplification equipment for communication and emergency only; - All vehicles and machinery must be fitted with appropriate silencing technology and must be properly maintained; - Any complaints received by the Contractor regarding noise must be recorded and communicated. Where possible or applicable, provide transport to and from the site on a daily basis for construction workers; 						

<ul style="list-style-type: none"> – Develop a Code of Conduct for the construction phase in terms of behaviour of construction staff. Operating hours as determined by the environmental authorisation are adhered to during the development phase. Where not defined, it must be ensured that development activities must still meet the impact management outcome related to noise management. 						
--	--	--	--	--	--	--

6.23 Fire prevention

Impact management outcome: Prevention of uncontrollable fires.

Impact Management Actions	Implementation			Monitoring		
	Responsible person	Method of implementation	Timeframe for implementation	Responsible person	Frequency	Evidence of compliance
<ul style="list-style-type: none"> – Designate smoking areas where the fire hazard could be regarded as insignificant; – Firefighting equipment must be available on all vehicles located on site; – The local Fire Protection Agency (FPA) must be informed of construction activities; – Contact numbers for the FPA and emergency services must be communicated in environmental awareness training and displayed at a central location on site; – Two way swap of contact details between ECO and FPA. 						

6.24 Stockpiling and stockpile areas

Impact management outcome: Reduce erosion and sedimentation as a result of stockpiling.

Impact Management Actions	Implementation	Monitoring
---------------------------	----------------	------------

	Responsible person	Method of implementation	Timeframe for implementation	Responsible person	Frequency	Evidence of compliance
<ul style="list-style-type: none"> – All material that is excavated during the project development phase (either during piling (if required) or earthworks) must be stored appropriately on site in order to minimise impacts to watercourses, watercourses and water bodies; – All stockpiled material must be maintained and kept clear of weeds and alien vegetation growth by undertaking regular weeding and control methods; – Topsoil stockpiles must not exceed 2 m in height; – During periods of strong winds and heavy rain, the stockpiles must be covered with appropriate material (e.g. cloth, tarpaulin etc.); – Where possible, sandbags (or similar) must be placed at the bases of the stockpiled material in order to prevent erosion of the material. 						

6.25 Civil works

Impact management outcome: Impact to the environment minimised during civil works to create the substation terrace.						
Impact Management Actions	Implementation			Monitoring		
	Responsible person	Method of implementation	Timeframe for implementation	Responsible person	Frequency	Evidence of compliance
<ul style="list-style-type: none"> – Where terracing is required, topsoil must be collected and retained for the purpose of re-use later to rehabilitate disturbed areas not covered by yard stone; 						

<ul style="list-style-type: none"> – Areas to be rehabilitated include terrace embankments and areas outside the high voltage yards; – Where required, all sloped areas must be stabilised to ensure proper rehabilitation is effected and erosion is controlled; – These areas can be stabilised using design structures or vegetation as specified in the design to prevent erosion of embankments. The contract design specifications must be adhered to and implemented strictly; – Rehabilitation of the disturbed areas must be managed in accordance with Section 5.35: Landscaping and rehabilitation; – All excess spoil generated during terracing activities must be disposed of in an appropriate manner and at a recognised landfill site; and – Spoil can however be used for landscaping purposes and must be covered with a layer of 150 mm topsoil for rehabilitation purposes. 						
---	--	--	--	--	--	--

6.26 Excavation of foundation, cable trenching and drainage systems

Impact management outcome: No environmental degradation occurs as a result of excavation of foundation, cable trenching and drainage systems.

Impact Management Actions	Implementation				Monitoring			
	Responsible	Method	of	Timeframe	for	Responsible	Frequency	Evidence of

	person	implementation	implementation	person		compliance
<ul style="list-style-type: none"> – All excess spoil generated during foundation excavation must be disposed of in an appropriate manner and at a licensed landfill site, if not used for backfilling purposes; – Spoil can however be used for landscaping purposes and must be covered with a layer of 150 mm topsoil for rehabilitation purposes; – Management of equipment for excavation purposes must be undertaken in accordance with Section 5.18: Workshop, equipment maintenance and storage; and – Hazardous substances spills from equipment must be managed in accordance with Section 5.17: Hazardous substances. 						

6.27 Installation of foundations, cable trenching and drainage systems

Impact management outcome: No environmental degradation occurs during the installation of foundation, cable trenching and drainage system.

Impact Management Actions	Implementation			Monitoring		
	Responsible person	Method of implementation	Timeframe for implementation	Responsible person	Frequency	Evidence of compliance
<ul style="list-style-type: none"> – Batching of cement to be undertaken in accordance with Section 5.19: Batching plants; and – Residual solid waste must be disposed of in accordance with Section 5.8: Solid waste and hazardous management. 						

6.28 Installation of equipment (circuit breakers, current Transformers, Isolators, Insulators, surge arresters, voltage transformers, earth switches)

Impact management outcome: No environmental degradation occurs as a result of installation of equipment.						
Impact Management Actions	Implementation			Monitoring		
	Responsible person	Method of implementation	Timeframe for implementation	Responsible person	Frequency	Evidence of compliance
<ul style="list-style-type: none"> – Management of dust must be conducted in accordance with Section 5.20: Dust emissions; – Management of equipment used for installation must be conducted in accordance with Section 5.18: Workshop, equipment maintenance and storage; – Management hazardous substances and any associated spills must be conducted in accordance with Section 5.17: Hazardous substances; and – Residual solid waste must be recycled or disposed of in accordance with Section 5.8: Solid waste and hazardous management. 						

5.2 Steelwork Assembly and Erection

Impact management outcome: No environmental degradation occurs as a result of steelwork assembly and erection.						
Impact Management Actions	Implementation			Monitoring		
	Responsible person	Method of implementation	Timeframe for implementation	Responsible person	Frequency	Evidence of compliance
<ul style="list-style-type: none"> – During assembly, care must be taken to ensure that no wasted/unused materials are left on site e.g. bolts and nuts 						

<ul style="list-style-type: none"> Emergency repairs due to breakages of equipment must be managed in accordance with Section 5.18: Workshop, equipment maintenance and storage and Section 5.16: Emergency procedures. 						
--	--	--	--	--	--	--

6.29 Cabling and Stringing

Impact management outcome: No environmental degradation occurs as a result of stringing.						
Impact Management Actions	Implementation			Monitoring		
	Responsible person	Method of implementation	Timeframe for implementation	Responsible person	Frequency	Evidence of compliance
<ul style="list-style-type: none"> Residual solid waste (off cuts etc.) shall be recycled or disposed of in accordance with Section 6.8: Solid waste and hazardous Management; Management of equipment used for installation shall be conducted in accordance with Section 5.18: Workshop, equipment maintenance and storage; Management hazardous substances and any associated spills shall be conducted in accordance with Section 5.17: Hazardous substances. 						

6.30 Testing and Commissioning (all equipment testing, earthing system, system integration)

Impact management outcome: No environmental degradation occurs as a result of Testing and Commissioning.		
Impact Management Actions	Implementation	Monitoring

	Responsible person	Method of implementation	Timeframe for implementation	Responsible person	Frequency	Evidence of compliance
<ul style="list-style-type: none"> Residual solid waste must be recycled or disposed of in accordance with Section 5.8: Solid waste and hazardous management. 						

6.31 Socio-economic

Impact management outcome: enhanced socio-economic development.						
Impact Management Actions	Implementation			Monitoring		
	Responsible person	Method of implementation	Timeframe for implementation	Responsible person	Frequency	Evidence of compliance
<ul style="list-style-type: none"> Develop and implement communication strategies to facilitate public participation; Develop and implement a collaborative and constructive approach to conflict resolution as part of the external stakeholder engagement process; Sustain continuous communication and liaison with neighboring owners and residents Create work and training opportunities for local stakeholders; and Where feasible, no workers, with the exception of security personnel, must be permitted to stay over-night on the site. This would reduce the risk to local farmers. 						

6.32 Temporary closure of site

Impact management outcome: Minimise the risk of environmental impact during periods of site closure greater than five days.						
Impact Management Actions	Implementation			Monitoring		
	Responsible person	Method of implementation	Timeframe for implementation	Responsible person	Frequency	Evidence of compliance
<ul style="list-style-type: none"> – Bunds must be emptied (where applicable) and need to be undertaken in accordance with the impact management actions included in sections 5.17: Hazardous substances and 5.18: Workshop, equipment maintenance and storage; – Hazardous storage areas must be well ventilated; – Fire extinguishers must be serviced and accessible. Service records to be filed and audited at last service; – Emergency and contact details displayed must be displayed; – Security personnel must be briefed and have the facilities to contact or be contacted by relevant management and emergency personnel; – Night hazards such as reflectors, lighting, traffic signage etc. must have been checked; – Fire hazards identified and the local authority must have been notified of any potential threats e.g. large brush stockpiles, fuels etc.; – Structures vulnerable to high winds must be secured; – Wind and dust mitigation must be implemented; – Cement and materials stores must have been secured; – Toilets must have been emptied and secured; – Refuse bins must have been emptied and secured; – Drip trays must have been emptied and secured. 						

6.33 Dismantling of old equipment

Impact management outcome: Impact to the environment to be minimised during the dismantling, storage and disposal of old equipment commissioning.

Impact Management Actions	Implementation			Monitoring		
	Responsible person	Method of implementation	Timeframe for implementation	Responsible person	Frequency	Evidence of compliance
<ul style="list-style-type: none"> – All old equipment removed during the project must be stored in such a way as to prevent pollution of the environment; – Oil containing equipment must be stored to prevent leaking or be stored on drip trays; – All scrap steel must be stacked neatly and any disused and broken insulators must be stored in containers; – Once material has been scrapped and the contract has been placed for removal, the disposal Contractor must ensure that any equipment containing pollution causing substances is dismantled and transported in such a way as to prevent spillage and pollution of the environment; – The Contractor must also be equipped to contain and clean up any pollution causing spills; and – Disposal of unusable material must be at a licensed waste disposal site. 						

6.34 Landscaping and rehabilitation

Impact management outcome: Areas disturbed during the development phase are returned to a state that approximates the original condition.

Impact Management Actions	Implementation	Monitoring

	Responsible person	Method of implementation	Timeframe for implementation	Responsible person	Frequency	Evidence of compliance
<ul style="list-style-type: none"> – All areas disturbed by construction activities must be subject to landscaping and rehabilitation; All spoil and waste must be disposed of to a registered waste site; – All slopes must be assessed for contouring, and to contour only when the need is identified in accordance with the Conservation of Agricultural Resources Act, No 43 of 1983 – All slopes must be assessed for terracing, and to terrace only when the need is identified in accordance with the Conservation of Agricultural Resources Act, No 43 of 1983; – Berms that have been created must have a slope of 1:4 and be replanted with indigenous species and grasses that approximates the original condition; – Where new access roads have crossed cultivated farmlands, that lands must be rehabilitated by ripping which must be agreed to by the holder of the EA and the landowners; – Rehabilitation of access roads outside of farmland; – Indigenous species must be used for with species and/grasses to where it compliments or approximates the original condition; – Stockpiled topsoil must be used for rehabilitation (refer to Section 5.24: Stockpiling and stockpiled areas); – Stockpiled topsoil must be evenly spread so as to facilitate seeding and minimise loss of soil due to erosion; – Before placing topsoil, all visible weeds from the placement area and from the topsoil must be removed; – Subsoil must be ripped before topsoil is placed; – The rehabilitation must be timed so that rehabilitation can take place at the optimal time for vegetation establishment; – Where impacted through construction related activity, all 						

<p>sloped areas must be stabilised to ensure proper rehabilitation is effected and erosion is controlled;</p> <ul style="list-style-type: none"> - Sloped areas stabilised using design structures or vegetation as specified in the design to prevent erosion of embankments. The contract design specifications must be adhered to and implemented strictly; - Spoil can be used for backfilling or landscaping as long as it is covered by a minimum of 150 mm of topsoil. - Where required, re-vegetation including hydro-seeding can be enhanced using a vegetation seed mixture as described below. A mixture of seed can be used provided the mixture is carefully selected to ensure the following: <ul style="list-style-type: none"> a) Annual and perennial plants are chosen; b) Pioneer species are included; c) Species chosen must be indigenous to the area with the seeds used coming from the area; d) Root systems must have a binding effect on the soil; e) The final product must not cause an ecological imbalance in the area 						
--	--	--	--	--	--	--

7 ACCESS TO THE GENERIC EMPr

Once completed and signed, to allow the public access to the generic EMPr, the holder of the EA must make the EMPr available to the public in accordance with the requirements of Regulation 26(h) of the EIA Regulations.

PART B: SECTION 2

8 SITE SPECIFIC INFORMATION AND DECLARATION

8.1 Sub-section 1: contact details and description of the project

8.1.1 Details of the applicant:

- Wolf Wind Farm (RF) Pty Ltd
- Name of applicant: Matteo Giulio Luigi Brambilla
- Tel No: +27 21 418 3940
- Cell No: +27 72 212 1531
- E-mail: m.logan@redrocket.energy
- Postal Address: Postnet Suite 150, Private Bag X3, Roggebaai, 8012
- Physical Address: Pier Place, Heerengracht Street, Foreshore, Cape Town, 8001

8.1.2 Details and expertise of the EAP:

- Name of EAP: Wynand Loftus
- Tel No: +27 44 805 5458
- Fax No: +27 44 805 5454
- E-mail address: Wynand.Loftus@zutari.com
- Expertise of the EAP (Curriculum Vitae included – attached as Appendix A to main EMPr document):
- MTech Nature Conservation
- EAPASA Registration: 2019/1203

8.1.3 Project name:

- Wolf-Skilpad-Grassridge 132kV Transmission Line, Kariega/Kirkwood, Eastern Cape

8.1.4 Description of the project:

Eskom requires the Applicant to construct a new 132 kilovolt (kV) overhead transmission line between the existing Wolf, Skilpad and Grassridge substations, North of Kariega and West of Kirkwood. The objective of the project is to connect the Wolf Wind Farm to the national grid via a newly constructed transmission line, thereby preventing potential future capacity issues and failure of the infrastructure.

This proposed 132 kV transmission line will run from the Grassridge substation in a north-westerly direction to the Skilpad- and Wolf substations for approximately 46km and 44km respectively, as illustrated in the locality map below. In an effort to minimise the potential negative environmental and social impacts of the project, the transmission line is proposed to run adjacent to an existing 132 kV transmission line as far as possible and has an approximate length of 90km. The existing 132 kV transmission line is expected to be decommissioned in the future, however decommissioning does not form part of the scope of this project and, as such, the impacts associated with the future decommissioning of the existing line have not been assessed and will have to be considered in future.

The servitude for this new transmission line will be 31m wide. A new 3.5m wide access track will be developed within the new servitude and will run for the full length of the proposed transmission line. The new servitude will be accessed via existing access (used for the existing 132 kV transmission line) and farm roads.

The new transmission line will link into the existing Wolf-, Skilpad- and Grassridge substation. This EMPr therefore only deals with the substations and not the overhead transmission line, which is dealt with in a separate EMPr. Apart from connecting to the existing substations, no additional works will be carried out for the substation infrastructure itself.

Project location:

- **Start (north) co-ordinate (Wolf Substation):** 33°21'10.48"S / 24°52'00.07"E
- **Middle co-ordinate (Skilpad Substation):** 33°28'50.14"S / 25°19'36.85"E
- **End (south) co-ordinate (Grassridge Substation):** 33°43'14.58"S / 25°37'48.60"E
- **Farm Portions:**

Farms and SG CODES:

Farm Portion and Number	21-digit SG code
Portion 10 of Farm 669	C07600000000066900001
Farm 692	C07600000000069200000
Farm 612	C07600000000061200000

8.1.5 LOCALITY MAPS

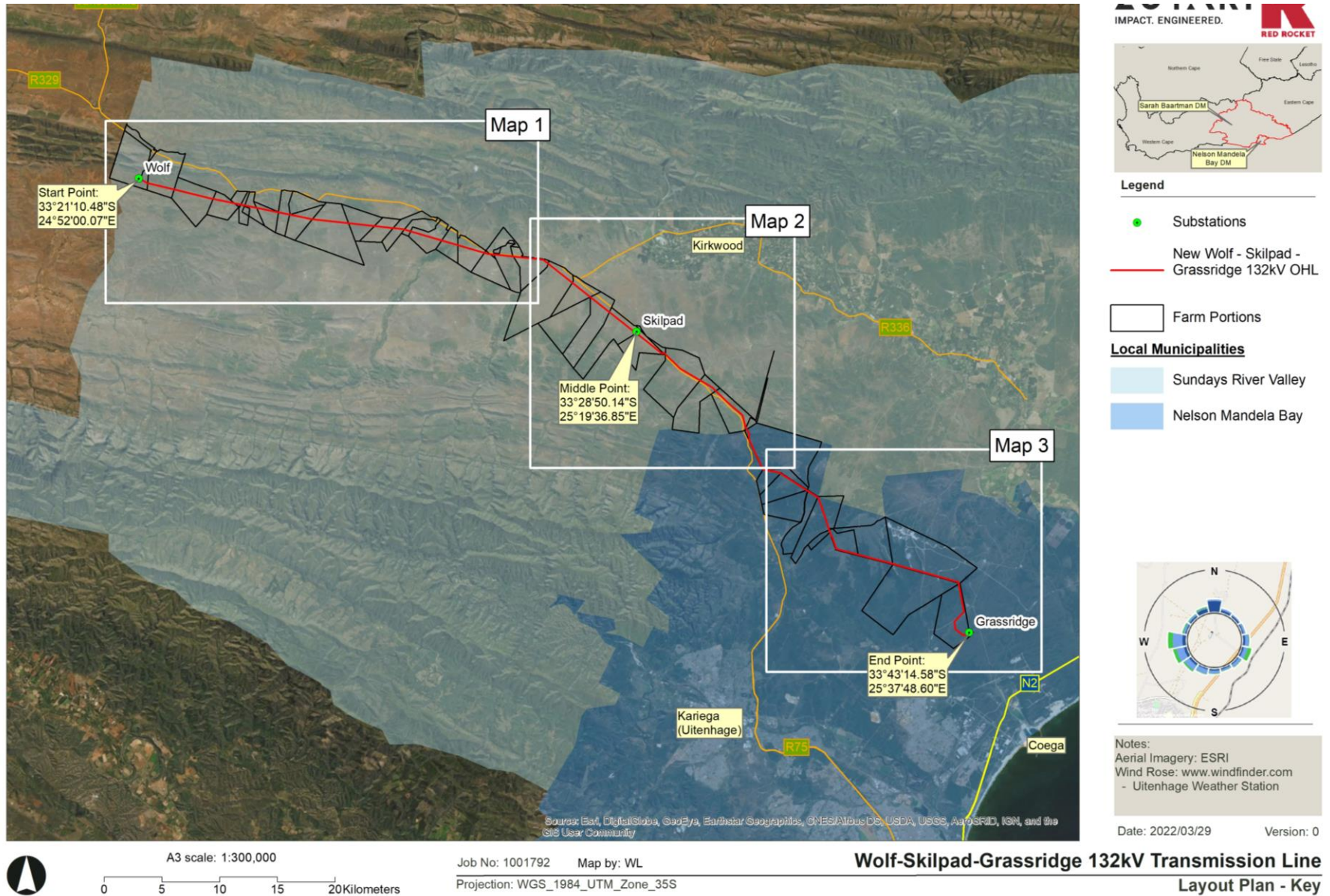


Figure 1 | Overview of the transmission line project.

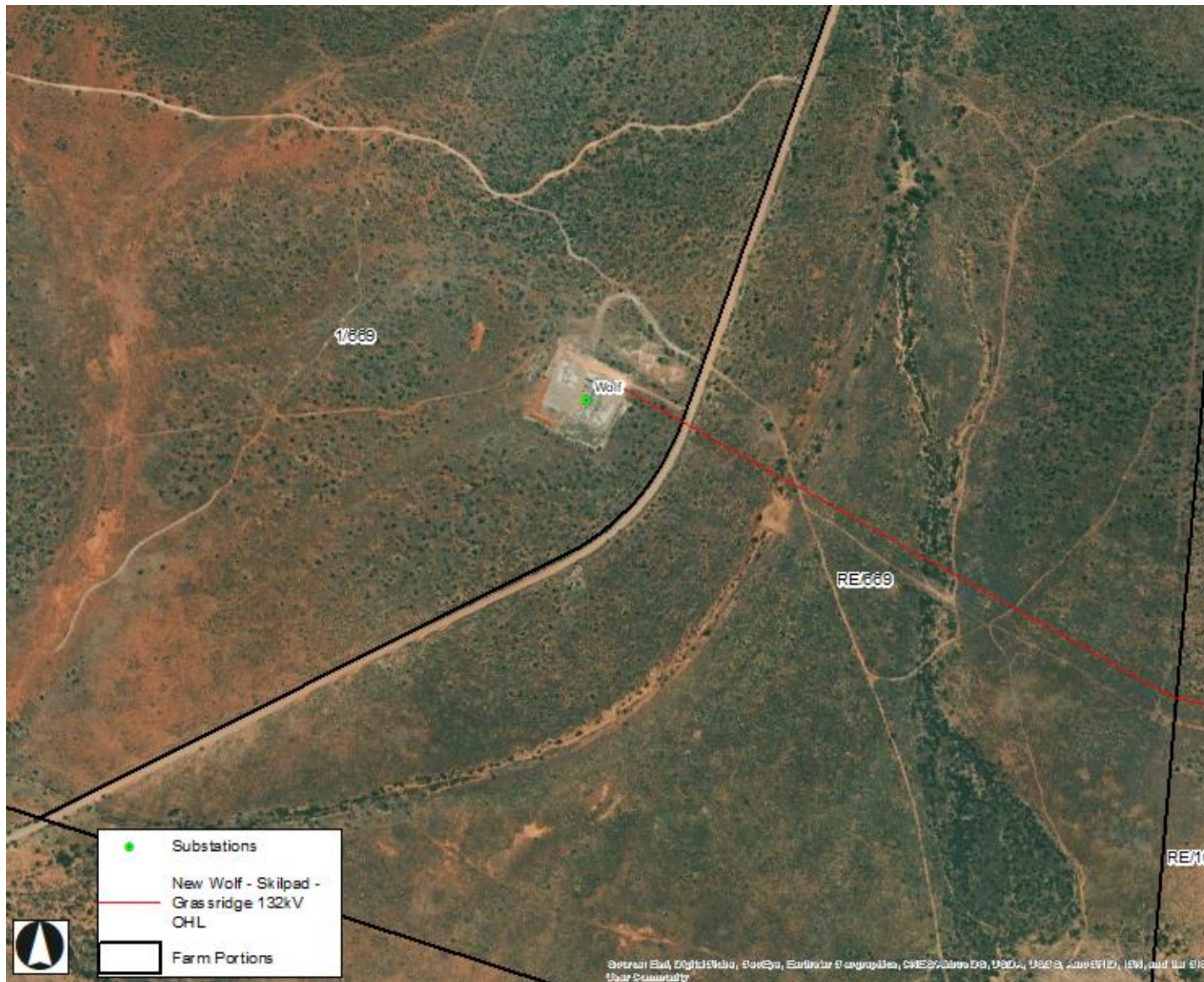


Figure 2 | Wolf Substation locality map

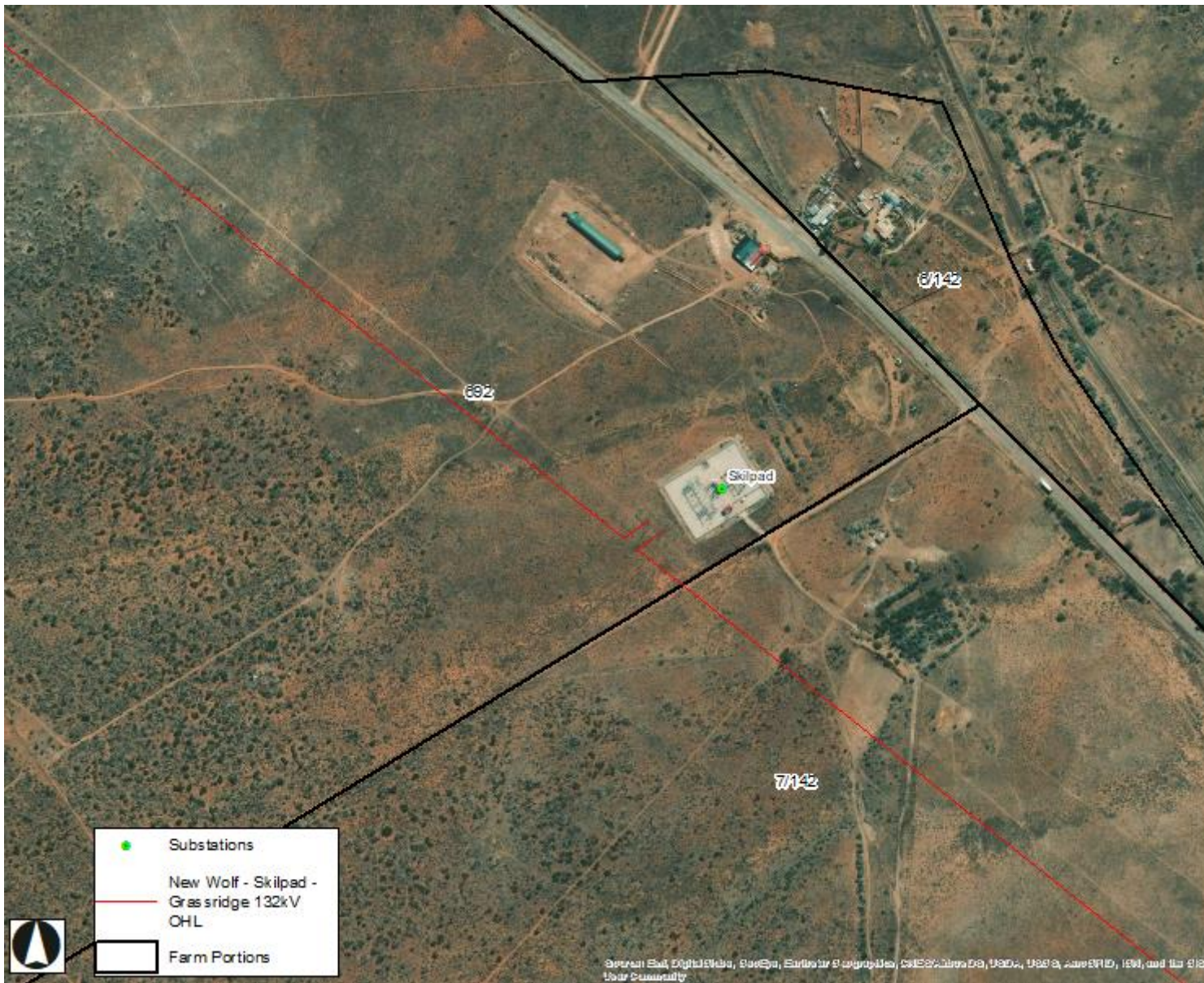
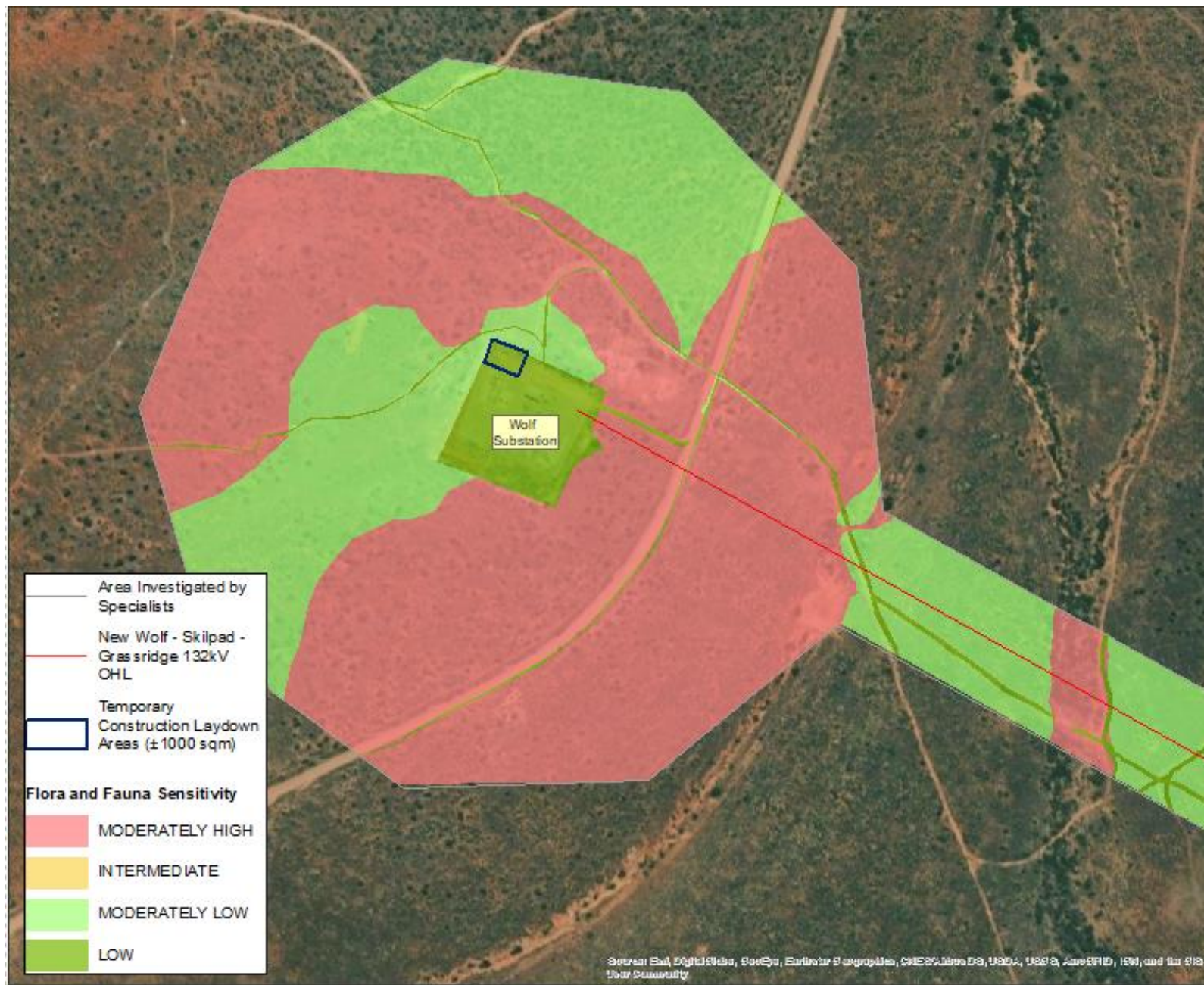
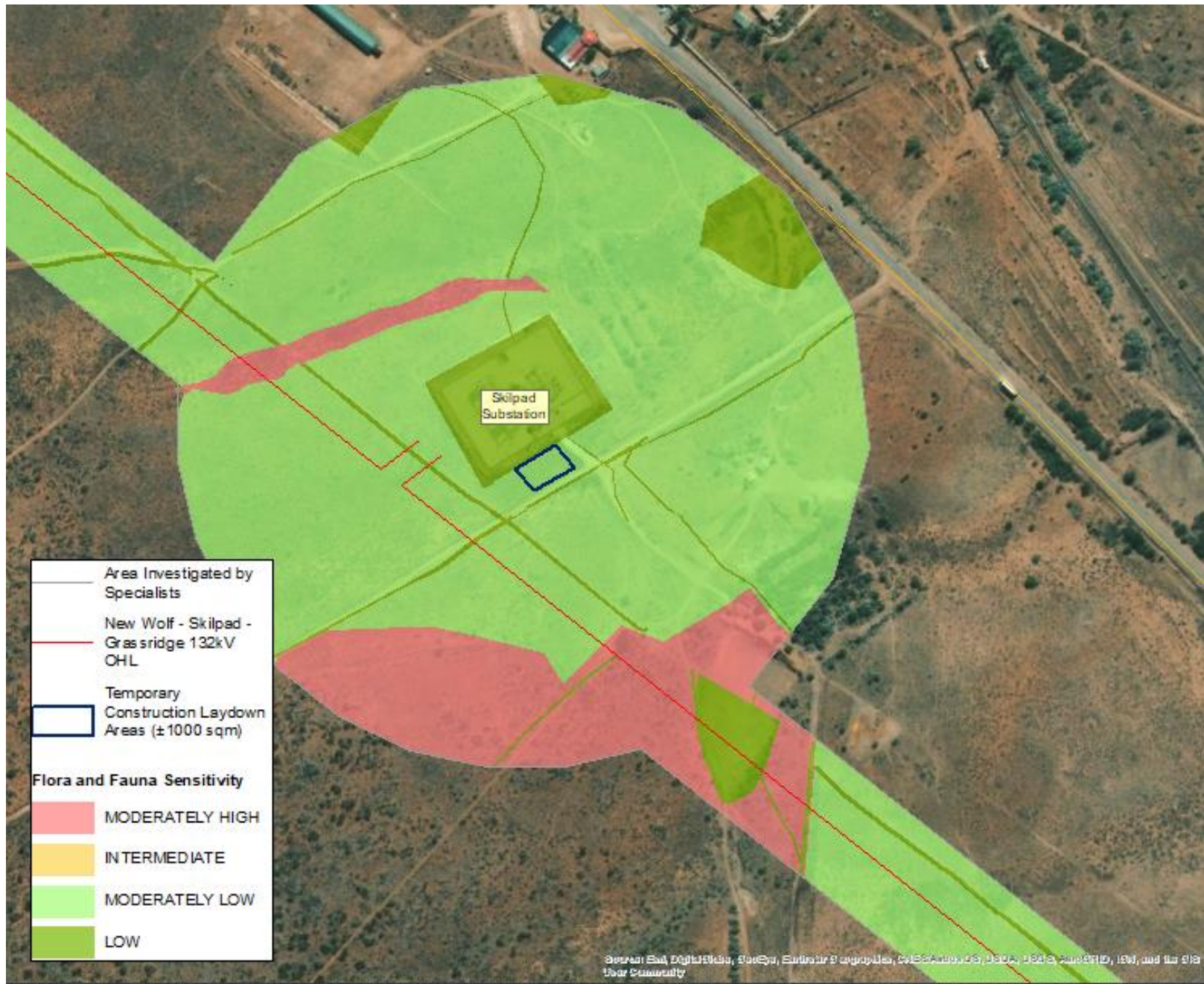


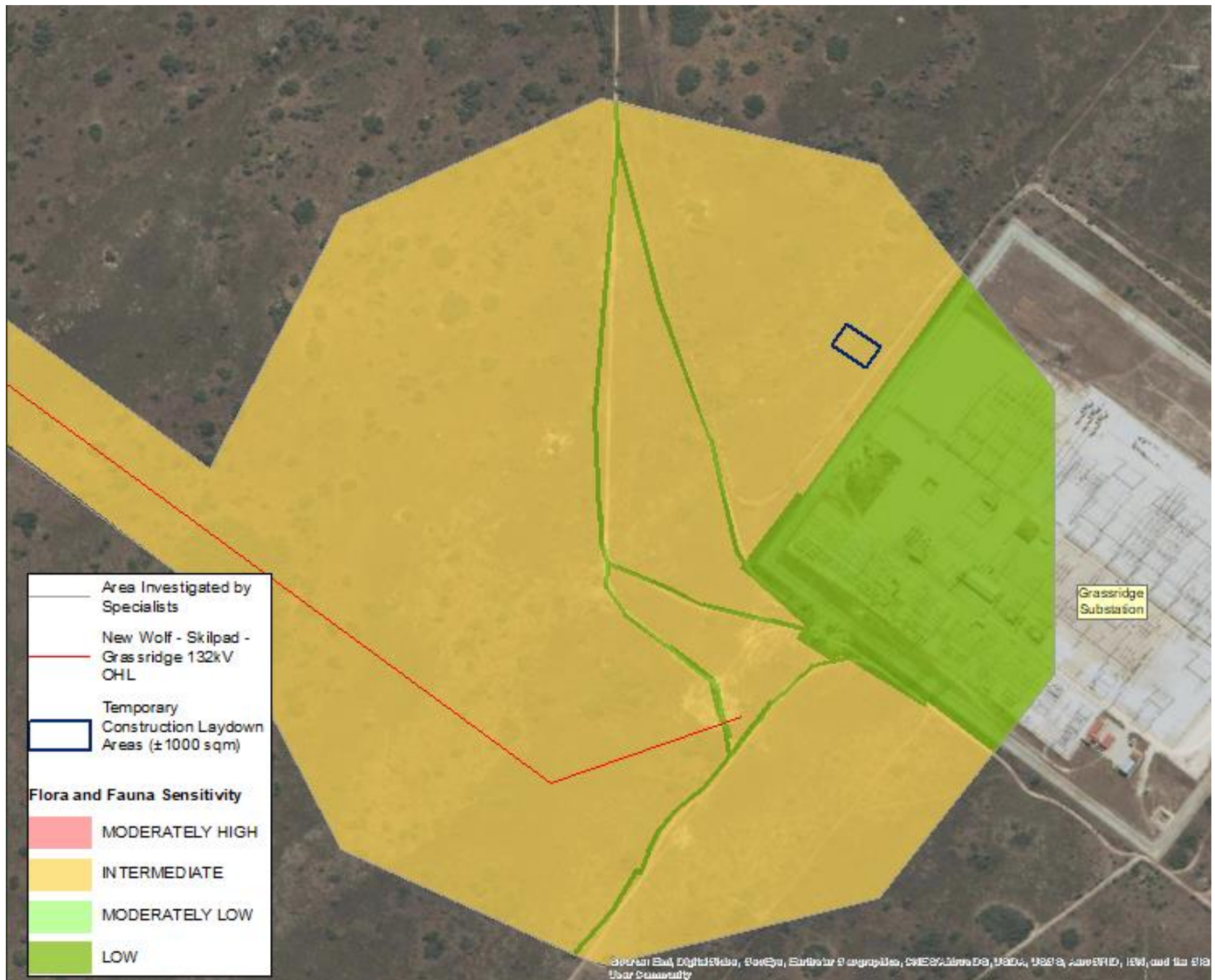
Figure 3 | Skilpad substation locality map



Figure 4 | Grassridge substation locality map







PART C: SITE SPECIFIC ENVIRONMENTAL ATTRIBUTES

9 SPECIFIC MITIGATION MEASURES AS LISTED IN THE ORIGINAL EIA DOCUMENT, PROVIDED BY SPECIALIST TEAM

Table 2: Terrestrial Ecology

Impact Management Actions	Implementation			Monitoring		
	Responsible person	Method of implementation	Timeframe for implementation	Responsible person	Frequency	Evidence of compliance
○ Only use existing access routes to reached infrastructure, proper identification of new AIPs introductions						
○ Clearing all construction material from site to avoid pollution and damage to the surrounding natural areas						
○ Restrict vegetation clearing to the minimum footprint area of the road to decrease the impact on habitat integrity and diversity						
○ No indiscriminate driving through the veld is allowed. As far as possible vehicles are to utilise the existing roads.						
○ Clearing all construction material from site to avoid pollution and damage to the surrounding natural areas.						

Table 3: Heritage

Impact Management Actions	Implementation			Monitoring		
	Responsible person	Method of implementation	Timeframe for implementation	Responsible person	Frequency	Evidence of compliance
○ All construction activities must be monitored or alternatively a person must be specially trained, for example the ECO, to conduct the monitoring. This must include the clearing of vegetation, leveling, excavations for other underground/ buried infrastructure and all above ground construction						

activities						
<ul style="list-style-type: none"> ○ Construction managers/foremen should also be informed before construction starts on the possible types of heritage sites and cultural material they may encounter and the procedures to follow when they find sites 						
<p>If any human remains (or any other concentrations of archaeological heritage material) are exposed during construction, all work must cease in the immediate area of the finds and must be reported immediately to the archaeologist at the Albany Museum in Makhanda (Tel.: 046 622 2312) or to the Eastern Cape Provincial Heritage Resources Authority (Tel.: 043 7450 888). Sufficient time should be allowed to investigate and to remove/collect such material. Recommendations will follow from the investigation and may include:</p> <ul style="list-style-type: none"> ○ Consultation with the local communities regarding the conditions for the possible removal, storage and reburial (in the case of human remains) of heritage material. ○ If the local communities agree to the removal of human remains and heritage, an archaeologist must apply for permits from the Eastern Cape Province Heritage Resources Authority to collect and/or excavate sites/materials from archaeological sites impacted by the development. ○ Consultation with the Albany Museum (repository for archaeological material in the Eastern Cape) regarding permit(s) to remove the heritage material, the storing, curating and costs involved. ○ A Phase 2 Mitigation process to systematically excavate and to remove the archaeological deposits before construction of the development continues 						

Impact Management Actions	Implementation			Monitoring		
	Responsible person	Method of implementation	Timeframe for implementation	Responsible person	Frequency	Evidence of compliance
<ul style="list-style-type: none"> ○ Monitor construction activities and implement chance fossil find procedure attached 						

NOTE: The below sections could not be accessed in this Protected Word document and the relevant information has therefore been captured above.

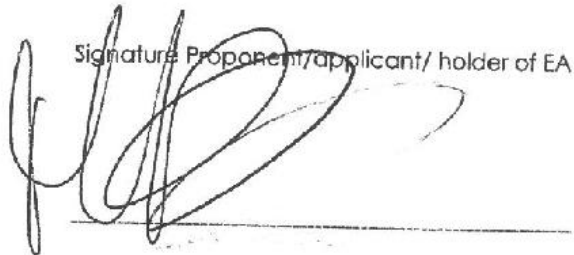
7.1 Sub-section 2: Development footprint site map

This sub-section must include a map of the site sensitivity overlaid with the preliminary infrastructure layout. The sensitivity map must be prepared from the national web based environmental screening tool, when available for compulsory use at: <https://screening.environment.gov.za/screeningtool>. The sensitivity map shall identify the nature of each sensitive feature e.g. threatened plant species, archaeological site, etc. Sensitivity maps shall identify features both within the planned working area and any known sensitive features within 50 m from the development footprint.

7.3 Sub-section 3: Declaration

The proponent/applicant or holder of the EA affirms that he/she will abide and comply with the prescribed impact management outcomes and impact management actions as stipulated in part B: section 1 of the generic EMPr and have the understanding that the impact management outcomes and impact management actions are legally binding. The proponent/applicant or holder of the EA affirms that he/she will provide written notice to the CA 14 day prior to the date on which the activity will commence of commencement of construction to facilitate compliance inspections.

Signature Proponent/applicant/ holder of EA



Date:

6 April 2022

7.4 Sub-section 4: amendments to site specific information (Part B: section 2)

Should the EA be transferred to a new holder, Part B: Section 2 must be completed by the new holder and submitted with the application for an amendment of the EA in terms of Regulations 29 or 31 of the EIA Regulations, whichever applies. The information submitted for an amendment to an environmental authorisation will be considered to be incomplete should a signed copy of Part B: Section 2 not be submitted. Once approved, Part B: Section 2 forms part of the EMPr for the development and the EMPr becomes legally binding to the new EA holder.

PART C: SITE SPECIFIC ENVIRONMENTAL ATTRIBUTES

If any specific environmental sensitivities/attributes are present on the site which require more specific impact management outcomes and actions, not included in the pre-approved generic EMPr template, to manage impacts, those impact management outcomes and impact management actions must be included in this section. These specific management controls must be referenced spatially, and must include impact management outcomes and impact management actions. The management controls including impact management outcomes and impact management actions must be presented in the format of the pre-approved generic EMPr template. This applies only to additional impact management outcomes and impact management actions that are necessary.

If Part C is applicable to the development as authorised in the EA, it is required to be submitted to the CA together with the BAR or EIAR, for consideration of, and decision on, the application for EA. The information in this section must be prepared by an EAP and the name and expertise of the EAP, including the curriculum vitae are to be included. Once approved, Part C forms part of the EMPr for the site and is legally binding.

This section will **not be required** should the site contain no specific environmental sensitivities or attributes.

APPENDIX 1: METHOD STATEMENTS

To be prepared by the contractor prior to commencement of the activity. The method statements are **not required** to be submitted to the CA.

An example of a method statement template is provided below.

METHOD STATEMENT

CONTRACT:

DATE:

PROPOSED ACTIVITY (give title of method statement and reference number from specification)

--

WHAT WORK IS TO BE UNDERTAKEN (give a brief description of the works):

--

WHERE ARE THE WORKS TO BE UNDERTAKEN (where possible, provided an annotated plan and a full description of the extent of the works):

--

START AND END DATE OF THE WORKS FOR WHICH THE METHOD STATEMENT IS REQUIRED:

START DATE:	END DATE:
--------------------	------------------

HOW ARE THE WORKS TO BE UNDERTAKEN (provide as much detail as possible, including annotated sketches and plans where possible)

--

APPENDIX 2: CV OF THE ENVIRONMENTAL ASSESSMENT PRACTITIONER

Wynand Loftus

Senior Consultant

Wynand is an environmental scientist with more than seven years' experience in environmental science, including environmental management, environmental impact assessments (EIAs), and environmental regulatory compliance. He has been involved in a range of projects across South Africa, including EIAs for municipal civil infrastructure and housing, renewable energy developments and environmental auditing and compliance monitoring.

He is experienced in managing full EIA processes, including, amongst others, compiling cost proposals for environmental advisory services; client interaction; budget management; conducting public participation processes (PPPs); compiling project reports such as EIA reports and environmental management programmes (EMPrs); and compiling of environmental maps in ArcView GIS.

Wynand is an experienced environmental control officer (ECO) on various infrastructure and borrow pit projects, with expertise in, amongst others, auditing and monitoring environmental compliance on site, compiling environmental audit reports, and conducting environmental induction training with contractors.

He obtained a Master of Technology in Nature Conservation in 2013 and a Bachelor of Technology in 2011, both from the Nelson Mandela Metropolitan University (NMMU) in South Africa. He is registered as a professional scientist with the South African Council for Natural Scientific Professions (SACNASP) and is a member of the International Association for Impact Assessment South Africa (IAIASa).

Experience

The Improvements and Management of Gravel Roads for 2020/21, 2021/22 and 2022/23, Western Cape Province, South Africa, Provincial Government of the Western Cape (PGWC): Department of Transport and Public Works (DTPW), Senior Consultant/Environmental Control Officer (ECO)

Zutari was appointed to assist the Western Cape DTPW with the improvement and management of gravel roads on the provincial road network. Main role on the appointment is ECO work on gravel roads – environmental induction and training, monitoring compliance with the EMPr, providing environmental advisory services and ensuring that rehabilitation is done, and that mining takes places to ensure good rehabilitation can be achieved. Also assist the DTPW with obtaining landowner approvals for temporary expropriation of land for gravel mining.

Qualifications

MTech Nature Conservation

BTech Nature Conservation

NDip Nature Conservation

Aquaculture Certificate

Professional registrations

Professional Scientist, South African Council for Natural Scientific Professions (SACNSP)

Member, International Association for Impact Assessment South Africa (IAIASa)

Specialisation

Impact Assessments, Environmental Management Programmes (EMPr), Environmental Control Officer (ECO) and Legislation

7

years in industry

Namdeb wind monitoring campaign, Namibia, Namdeb, 03/2020 - 12/2021, Senior Consultant to Project Manager

Zutari was appointed to investigate and conduct a technical pre-feasibility study of a wind farm to provide electricity for Namdeb's diamond mines along the southern Namibian coastline. Responsible for compilation of environmental screening report and submission to the Namibian Ministry of Environment, Forestry and Tourism.

Nuweveld wind farms, Western Cape Province, South Africa, Red Cap Energy (Pty) Ltd (Red Cap), 03/2019 - 12/2021, Senior Consultant to Project Manager

Appointed to facilitate three environmental impact assessments (EIAs) for the proposed Nuweveld wind farms, and to undertake one basic assessment (BA) process for an approximately 120 km gridline connection. Involved with all delivery related tasks, including compiling reports, full responsibility for the Environmental management Programme (EMPr), conducting site inspections, conducting public participation processes and managing spatial data.

Materials supply for gravel roads, Western Cape Province, South Africa, Provincial Government of the Western Cape (PGWC): Department of Transport and Public Works (DTPW), 02/2015 - 02/2021, Senior Consultant/Environmental Control Officer (ECO)

Appointed to assist with the material supply and planning, design and control aspects for the maintenance of gravel roads in the Central Karoo and Eden District Municipalities. Services include engineering geology, environmental studies, materials source identification and project management. The contract primarily entails locating and proving suitable material sources for the re-gravelling of 300 km and maintenance activities of 45 000 km of all gravel roads in the two identified district municipalities. Obtaining approval for the use of material sources was a challenge due to the associated environmental and legal aspects, where legal approval was required from the Department of Mineral Resources (DMR) and from the Department of Environmental Affairs and Development Planning (DEADP). Responsible for carrying out basic assessment (BA) processes to apply for environmental authorisation and mining permits from the DMR. The BA included all relevant authority correspondence and public participation processes (PPPs). Also responsible for carrying out environmental control officer (ECO) duties at various borrow pits throughout the Garden Route and Central Karoo District Municipalities, including site inspections, compiling monthly ECO reports, monitoring mining activities, and corresponding with the two district municipalities.

Environmental advisory services to the Mossel Bay Local Municipality, Western Cape Province, South Africa, Mossel Bay Local Municipality, 01/2019 - 06/2021, Senior Consultant

Appointed on a municipal panel to provide environmental advisory services, including environmental impact assessments (EIAs), basic assessments (BAs) and environmental management programmes (EMPrs). Responsible for compiling and submitting an environmental applicability checklist to the local environmental, competent authority. Also responsible for facilitating the BA and EIA processes.

Environmental advisory services to George Local Municipality, Western Cape Province, South Africa, George Local Municipality, 02/2019 - 02/2021, Senior Consultant

Appointed to carry out the basic assessment (BA) environmental process for remedial works along Roodraai Road in Herolds Bay. Responsible for compiling basic assessment reports (BARs), the public participation process (PPP), and the application form. Duties include corresponding with and managing environmental specialists and liaising with environmental competent authority.

Mossel Bay Upgrading of Informal Settlements Programme (UISP), Western Cape Province, South Africa, Mossel Bay Local Municipality, 01/2017 - 12/2019, Senior Consultant

Appointed to provide project management services for informal settlement upgrading in the Mossel Bay Local Municipality via the UISP, as a follow on to the National Upgrading Support Programme

(NUSP). Aurecon's scope of works included the project planning, procurement of requisite planning and environmental permissions and implementation oversight for 22 informal settlements. Responsible for coordinating environmental processes and project management, including four (4) Section 24G processes and one (1) amendment application, facilitating specialist inputs and assessments, and corresponding and interacting with relevant organs of state and authorities.

Basic assessment (BA) for the Koeris Wind Energy Facility (WEF) temporary fuel storage facility, Northern Cape Province, South Africa, Mainstream Renewable Power, 10/2018 - 10/2019, Senior Consultant

Appointed to facilitate the requisite basic assessment (BA) environmental process for the construction of a temporary fuel storage facility for the construction period of the Koeris Wind Energy Facility (WEF) in Springbok. Responsible for carrying out the full BA process, including compiling a basic assessment report (BAR) and environmental management programme (EMPr), conducting a full public participation process (PPP) and carrying out all project management related duties.

Environmental planning and compliance for the Working for Wetlands Programme 2017-2019, National, South Africa, Department of Environmental Affairs (DEA), 11/2016 - 06/2019, Senior Consultant

Zutari, in association with GroundTruth, was appointed to undertake the planning and approval processes for the Working for Wetlands Programme for the period 2017-2019. The programme has been mandated to rehabilitate damaged wetlands and to protect pristine wetlands. The methodology followed constitutes three phases. The coarse-scale planning (Phase 1) entails the identification of degraded wetlands for rehabilitation purposes; the detailed planning (Phase 2) is for the identification and design of rehabilitation interventions and obtaining environmental authorisations in terms of the National Environmental Management Act no 107 of 1998 (NEMA) and Phase 3, the provision of implementation support, includes setting out and signing off constructed interventions and monitoring and evaluating wetland rehabilitation projects. Responsible for the compilation of basic assessment reports (BARs), the public participation process (PPP) and application form as well as conducting site inspections.

Ladismith West flood damage repair, Western Cape Province, South Africa, Hatch Goba, 01/2016 - 03/2017, Environmental Control Officer (ECO)

The project entailed providing environmental control officer (ECO) services for the construction and repair of stream crossings along a provincial road. Work was carried out within watercourses and sound environmental management was particularly important. Responsible for conducting site inspections and compiling the ECO reports to ensure compliance with the environmental maintenance management plan (MMP). Also responsible for conducting environmental induction training with the contractor and his staff, informing them of the environmental sensitivity of the site, identifying no-go areas, and educating staff on the importance of practising sound environmental management.

Saffraan Rivier maintenance management plan (MMP), Western Cape Province, South Africa, Private client, 2015 - 03/2017, Consultant/Environmental Control Officer (ECO)

The appointment involved providing environmental advisory services to a private landowner in Oudtshoorn, including correspondence with the competent authority and the compilation of a road management plan and an environmental maintenance management plan (MMP) for the property. Responsible for compiling a road rehabilitation plan and MMP for the farm and acting as environmental control officer (ECO) on the river rehabilitation and alien clearing activities.

Midbrak sewer upgrades and pump station (Great Brak River), Western Cape Province, South Africa, V3 Consulting Engineers, 2016 - 03/2017, Environmental Control Officer (ECO)

The project involved providing environmental control officer (ECO) services for the construction of a main sewer line and pump station. Responsible for conducting site inspections and compiling ECO reports, the post-construction audit report, and post-rehabilitation audit reports. The rehabilitation comprised the re-planting a variety of coastal forest species along the pipeline alignment and watering

the plants every fortnight. Also responsible for conducting environmental induction training with the contractor and his staff, informing them of the environmental sensitivity of the site, identifying no-go areas and educating staff on the importance of practising sound environmental management.

Environmental audit for the Garden Route Casino, Western Cape Province, South Africa, Garden Route Casino, 07/2018 - 06/2019, Senior Consultant

The project involved providing environmental advisory services and the complete requisite environmental audit for the Garden Route Casino and determining the best way forward for the casino to comply with its responsibilities. Responsible for correspondence with the local environmental competent authority regarding the regulatory environmental audit requirements applicable to the Garden Route Casino. Also responsible for carrying out the environmental audit, compiling an audit report and submitting the report to the competent authority.

Beaufort West 22 kV power lines, Western Cape Province, South Africa, Eskom, 2015 - 2016, Environmental Control Officer (ECO)

The project involved providing environmental control officer (ECO) services for the construction of six 22 kV powerlines through undeveloped land in Beaufort West. Responsible for ECO services.

Environmental impact assessment (EIA) for the extension of ashing facilities at Kriel Power Station, Mpumalanga Province, South Africa, Eskom, 08/2016 - 11/2017, Senior Consultant

Appointed to undertake an environmental impact assessment (EIA) for the extension of an ash dam facility at the Kriel Power Station. The EIA was postponed after the scoping phase was completed in 2011 due to further geotechnical investigation being required for the preferred site. In 2016, Aurecon's appointment was amended to allow for a new EIA process to be undertaken in terms of the latest environmental legislation. Responsible for comparing 2014 National Environmental Management Act (NEMA) EIA regulations with the amended 2017 NEMA EIA Regulations and listing similarly listed activities.

Environmental impact assessment (EIA) for the Hotazel Solar Park, Northern Cape Province, South Africa, juwi Renewable Energies (Pty) Ltd, 05/2016 - 10/2017, Senior Consultant

The project comprised entailed an environmental impact assessment (EIA) for the development of a 200 MW solar photovoltaic (PV) facility, including a utility scale battery storage facility, as well as transmission line. Aurecon's services included environmental management and advisory, transport assessments, hydrological assessments and stormwater planning. Responsible for assisting the project leader with public participation process (PPP).

Herold Meander mixed-use development, Western Cape Province, South Africa, Sonqua Consulting, 01/2016 - 03/2017, Consultant

The project involved a mixed-used development (i.e. agricultural village) comprising various agricultural components, including amongst others hops farming, small scale product processing, flower farming, honey farming, an aquaculture facility, and grazing for livestock). The housing component and infrastructure included package plant wastewater treatment works (WWTWs), a reservoir and pipelines. The development also has various tourism activities and a community hall. Responsible for carrying out the scoping and environmental impact assessment (EIA) processes, which included compiling environmental reports, and public participation and project management duties such as specialist management and consultation with authorities.

Basic assessment (BA) process for the Bitou Public Safety Centre, Western Cape Province, South Africa, SMEC, 2015 - 2016, Consultant

The project involved a full basic assessment (BA) process for the Bitou Public Safety Centre in Plettenberg Bay. Responsible for compiling reports, including the basic assessment report (BAR) and

environmental management plan (EMP); conducting a full public participation process (PPP); and all project management related duties.

Brandwacht Mediclinic amendment application, Western Cape Province, South Africa, Atterbury Property Developments, 2015 - 2016, Consultant

The project involved a Part 2 amendment application process, which included compiling an impact statement report and public participation, for the Brandwacht Mediclinic in Stellenbosch. The original decision was appealed and therefore an amendment application was submitted via the Western Cape Minister of Environmental Affairs' Office. Responsible for coordinating the amendment application process.

Uitvlug Section 24G application, Western Cape Province, South Africa, Private client, 2014 - 2016, Consultant

The project involved carrying out a full environmental Section 24G process for the illegal construction of a road and vegetation clearance in Oudtshoorn. Responsible for carrying the Section 24G rectification process.

Henque waste management licence (WML), Western Cape Province, South Africa, Henque Waste, 2015, Consultant

Responsible for carrying out a full waste management licence (WML) application for a waste management and sorting facility.

Sonskynvallei Phase 3 municipal housing project, Western Cape Province, South Africa, Mossel Bay Local Municipality, 2014 - 2015, Consultant

The project entailed providing environmental advisory services and carrying out a full basic assessment (BA) environmental process for the municipal housing development in Sonskynvallei. Infrastructure upgrades associated with the project included increasing the capacity of an existing water reservoir, and constructing a new bulk water pipeline and sewer rising main. Specialist assessments included archaeological, botanical, heritage, traffic and visual assessments. Responsible for carrying out a full BA process, including the compilation of environmental reports such as a basic assessment report (BAR) and environmental management programme (EMPr); conducting a full public participation process (PPP) and all project management related duties, including specialist management and consultation with authorities.

Golden Valley Municipal Housing Project, Western Cape Province, South Africa, George Local Municipality, 2014, Consultant

The project entailed providing environmental advisory services and carrying out a full basic assessment (BA) environmental process for the municipal housing development in Golden Valley, Blanco, George. The project proposal included the establishment of serviced erven, streets and top structures. Responsible for carrying out a full BA process, including the compilation of environmental reports such as a basic assessment report (BAR) and environmental management programme (EMPr); conducting a full public participation process (PPP) and all project management related duties, including specialist management and consultation with authorities.

Conville Municipal Housing Project, Western Cape Province, South Africa, George Local Municipality, 2014, Consultant

The project entailed providing environmental advisory services and carrying out a full basic assessment (BA) environmental process for the municipal housing development comprising of Community Residential Units (CRU, 2 storey walk-ups) in Conville, George. Responsible for carrying out a full BA process, including the compilation of environmental reports such as a basic assessment report (BAR) and environmental management programme (EMPr); conducting a full public participation process (PPP) and all project management related duties, including specialist management and consultation with authorities.

Thembaletu N2 Municipal Housing Project, Western Cape Province, South Africa, George Local Municipality, 2014, Consultant

The project entailed providing environmental advisory services and carrying out a full basic assessment (BA) environmental process for the municipal housing development in Golden Valley, Blanco, George. The project proposal included the establishment of serviced erven, streets and top structures. Responsible for carrying out a full BA process, including the compilation of environmental reports such as a basic assessment report (BAR) and environmental management programme (EMPr); conducting a full public participation process (PPP).

Metrogrounds Municipal Housing Project, Western Cape Province, South Africa, George Local Municipality, 2014, Consultant

The project entailed providing environmental advisory services and carrying out a full basic assessment (BA) environmental process for the municipal housing development in Golden Valley, Blanco, George. The project proposal included the establishment of serviced erven, streets and top structures. Responsible for carrying out a full BA process, including the compilation of environmental reports such as a basic assessment report (BAR) and environmental management programme (EMPr); conducting a full public participation process (PPP) and all project management related duties, including specialist management and consultation with authorities.

Erf 325 East Municipal Housing Project Amendment Application, Western Cape Province, South Africa, George Local Municipality, 2014 - 2017, Consultant

Compilation of Impact Statement Report in support of an application to amend the existing Environmental Authorisation and assist the project manager with public participation related tasks e.g. placing adverts and compiling and distributing notifications.

Pre-Feasibility Environmental Constraints Analysis for George Municipality Housing Infill, Western Cape Province, South Africa, George Local Municipality, 2014 - 2017, Consultant

Investigated various proposed infill housing sites throughout George. Compilation of a pre-feasibility constraints report which included presenting the sites spatially with all the relevant (and available) desktop based environmental GIS information and determining whether further environmental investigations in terms of NEMA would be required. A recommendation relating to the required environmental approvals were also made.

APPENDIX 3: CHANCE FOSSIL FINDS PROCEDURE

Monitoring Programme for Palaeontology – to commence once the excavations begin.

1. The following procedure is only required if fossils are seen on the surface and when excavations commence.
2. When excavations begin the rocks and must be given a cursory inspection by the environmental officer or designated person. Any fossiliferous material (plants, insects, bone, coal) should be put aside in a suitably protected place. This way the project activities will not be interrupted.
3. Photographs of similar fossil plants must be provided to the developer to assist in recognizing the fossil plants in the shales and mudstones (for example see Figures 4, 5). This information will be built into the EMP's training and awareness plan and procedures.
4. Photographs of the putative fossils can be sent to the palaeontologist for a preliminary assessment.
5. If there is any possible fossil material found by the developer/environmental officer/miners then the qualified palaeontologist sub-contracted for this project, should visit the site to inspect the selected material and check the dumps where feasible.
6. Fossil plants or vertebrates that are considered to be of good quality or scientific interest by the palaeontologist must be removed, catalogued and housed in a suitable institution where they can be made available for further study. Before the fossils are removed from the site a SAHRA permit must be obtained. Annual reports must be submitted to SAHRA as required by the relevant permits.
7. If no good fossil material is recovered then no site inspections by the palaeontologist will be necessary. A final report by the palaeontologist must be sent to SAHRA once the project has been completed and only if there are fossils.
8. If no fossils are found and the excavations have finished then no further monitoring is required.