

- Legend**
- Informal Cemetery
 - Underneath Existing 132kV OHL
 - Substations
 - New Wolf - Skilpad - Grassridge 132kV OHL
 - 32m Buffer from Delineated Wetlands and Watercourses
 - Delineated Wetlands and Watercourses

Total length of the line is considered 'high sensitivity' for avifauna.

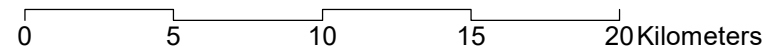
Notes:
Aerial Imagery: ESRI
No site specific sensitivities for:
Palaeontology, RFI, Geotech,
Agriculture, CAA, Visual

Date: 2022/03/28 Version: 0

Source: Esri, DigitalGlobe, GeoEye, Earthstar Geographics, CNES/Airbus DS, USDA, USGS, AeroGRID, IGN, and the GIS User Community

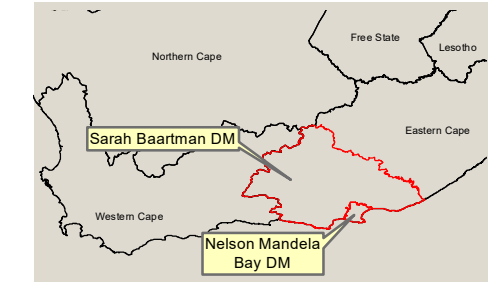


A3 scale: 1:254,311



Job No: 1001792 Map by: WL
Projection: WGS_1984_UTM_Zone_35S

Wolf-Skilpad-Grassridge 132kV Transmission Line
Environmental Sensitivities - Key



Legend

- Informal Cemetery Underneath Existing 132kV OHL
- Area Investigated by Specialists
- New Wolf - Skilpad - Grassridge 132kV OHL

32m Buffer from Delineated Wetlands and Watercourses

Delineated Wetlands and Watercourses

Fauna Sensitivity

Intermediate

Low

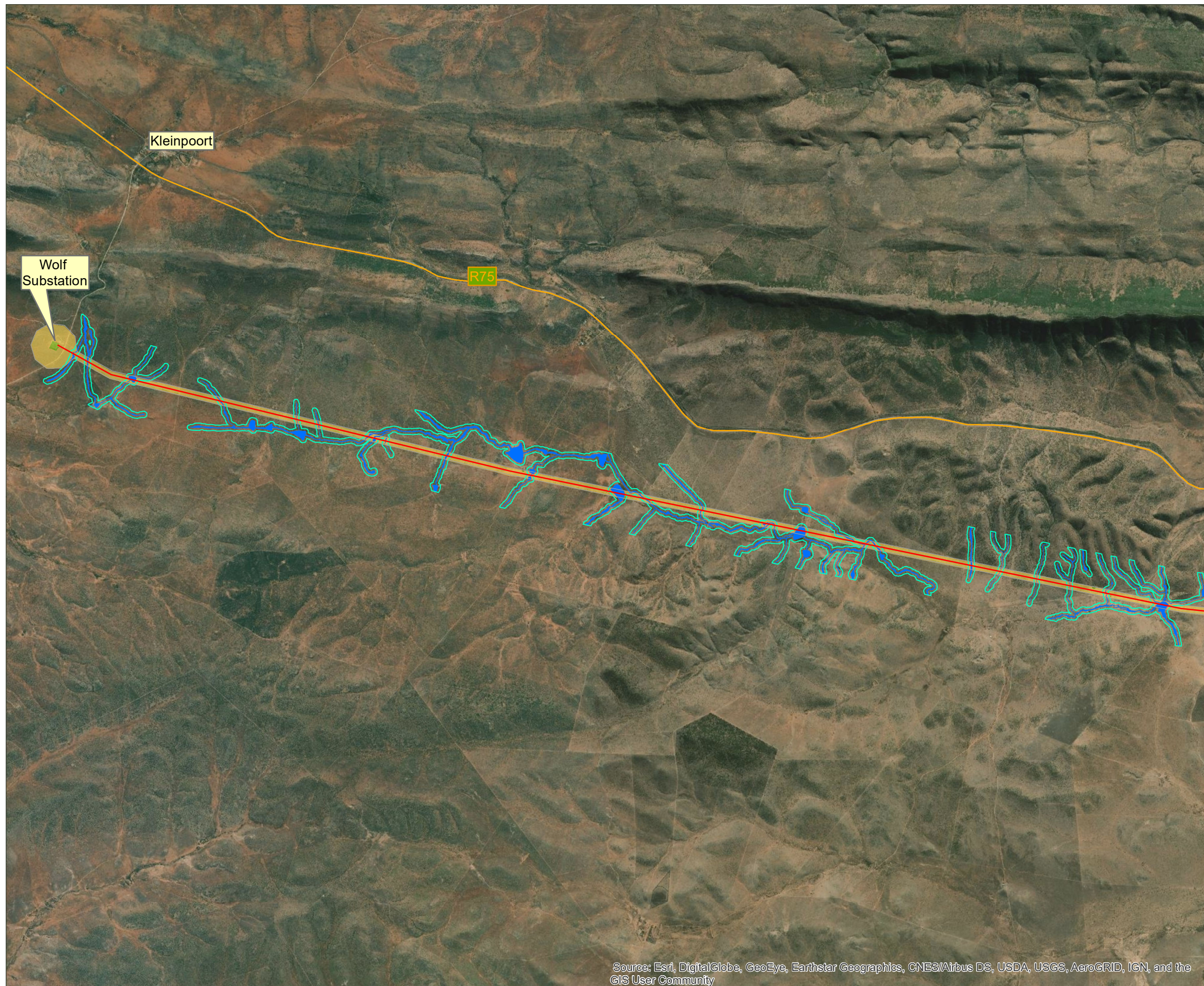
Moderately High

Total length of the line is considered 'high sensitivity' for avifauna.

Notes:
Aerial Imagery: ESRI
No site specific sensitivities for:
Palaeontology, RFI, Geotech,
Agriculture, CAA, Visual

Date: 2022/03/28

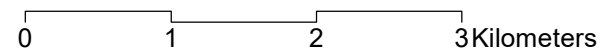
Version: 0



Source: Esri, DigitalGlobe, GeoEye, Earthstar Geographics, CNES/Airbus DS, USDA, USGS, AeroGRID, IGN, and the GIS User Community



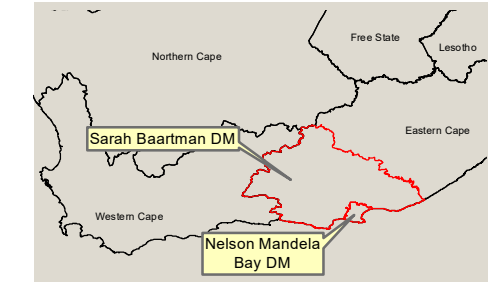
A3 scale: 1:52,000



Job No: 1001792 Map by: WL

Projection: WGS_1984_UTM_Zone_35S

**Wolf-Skilpad-Grassridge 132kV Transmission Line
Environmental Sensitivities (excl. flora) - Map 1**



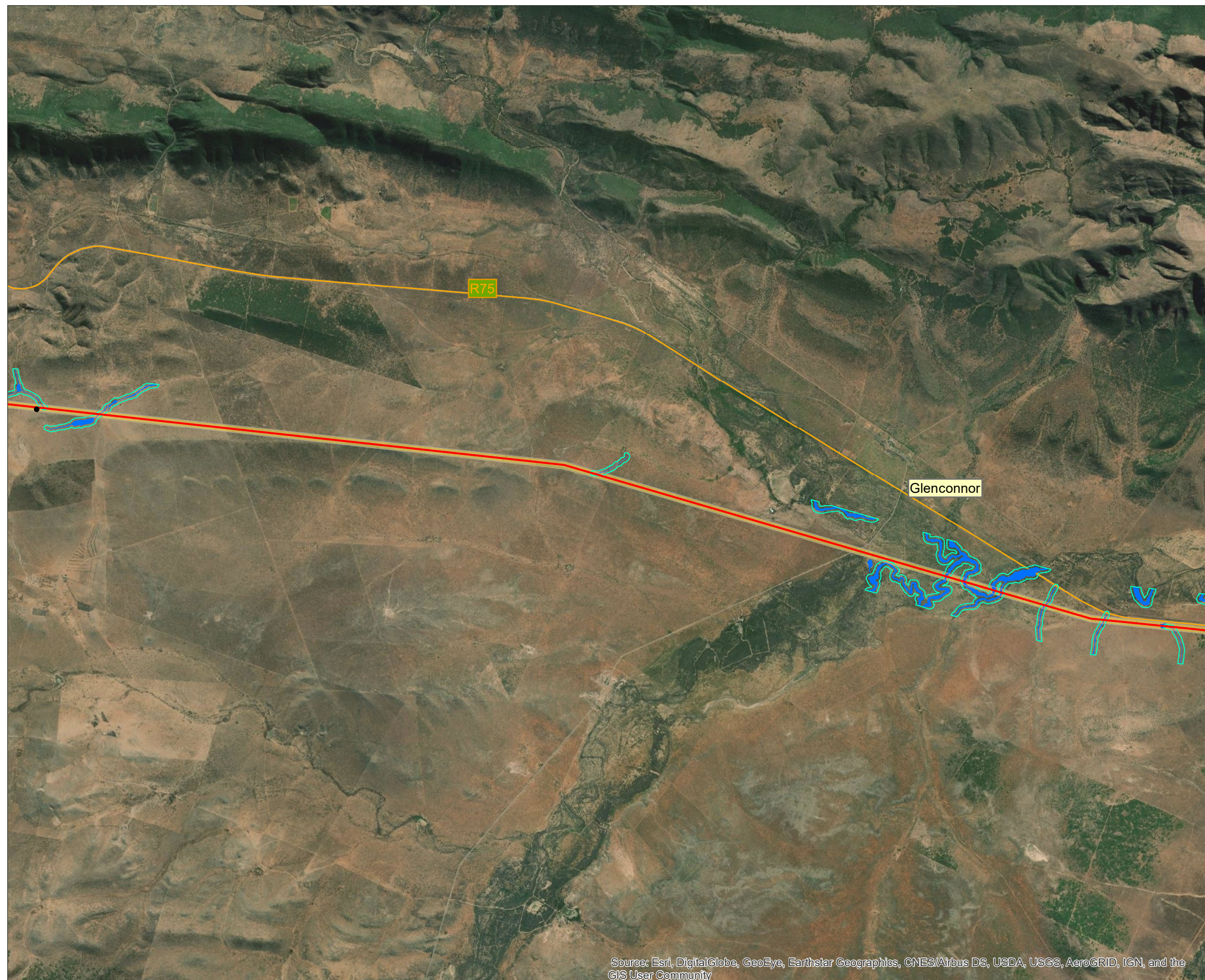
Legend

- Informal Cemetery Underneath Existing 132kV OHL
 - Area Investigated by Specialists
 - New Wolf - Skilpad - Grassridge 132kV OHL
 - 32m Buffer from Delineated Wetlands and Watercourses
 - Delineated Wetlands and Watercourses
- Fauna Sensitivity**
- Intermediate
 - Low
 - Moderately High

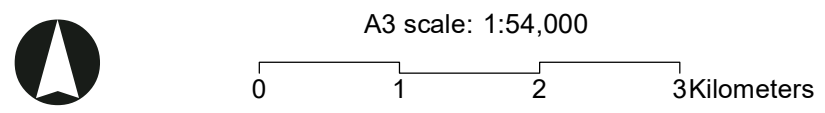
Total length of the line is considered 'high sensitivity' for avifauna.

Notes:
Aerial Imagery: ESRI
No site specific sensitivities for:
Palaeontology, RFI, Geotech,
Agriculture, CAA, Visual

Date: 2022/03/28 Version: 0

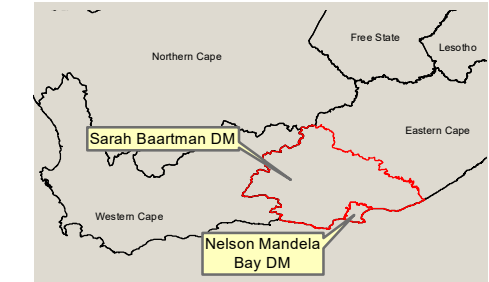


Source: Esri, DigitalGlobe, GeoEye, Earthstar Geographics, CNES/Airbus DS, USDA, USGS, AeroGRID, IGN, and the GIS User Community



Job No: 1001792 Map by: WL
Projection: WGS_1984_UTM_Zone_35S

**Wolf-Skilpad-Grassridge 132kV Transmission Line
Environmental Sensitivities (excl. flora) - Map 2**



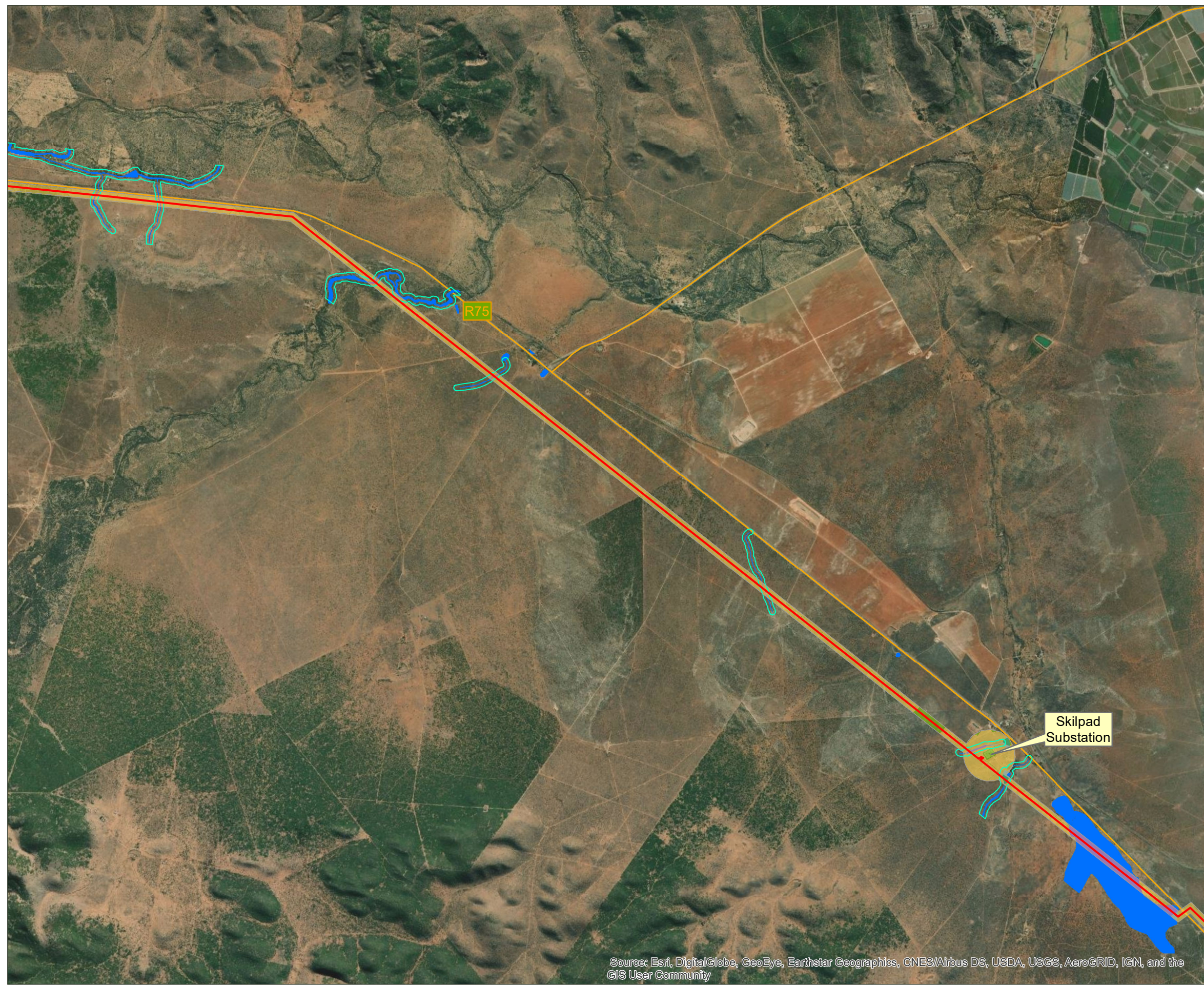
Legend

- Informal Cemetery Underneath Existing 132kV OHL
 - Area Investigated by Specialists
 - New Wolf - Skilpad - Grassridge 132kV OHL
 - 32m Buffer from Delineated Wetlands and Watercourses
 - Delineated Wetlands and Watercourses
- Fauna Sensitivity**
- Intermediate
 - Low
 - Moderately High

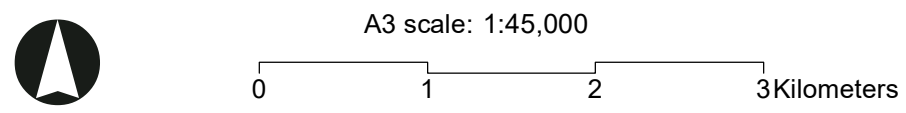
Total length of the line is considered 'high sensitivity' for avifauna.

Notes:
Aerial Imagery: ESRI
No site specific sensitivities for: Palaeontology, RFI, Geotech, Agriculture, CAA, Visual

Date: 2022/03/28 Version: 0

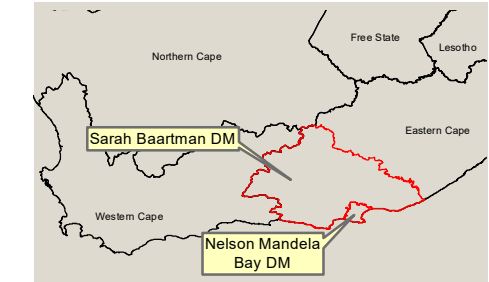


Source: Esri, DigitalGlobe, GeoEye, Earthstar Geographics, CNES/Airbus DS, USDA, USGS, AeroGRID, IGN, and the GIS User Community



Job No: 1001792 Map by: WL
Projection: WGS_1984_UTM_Zone_35S

**Wolf-Skilpad-Grassridge 132kV Transmission Line
Environmental Sensitivities (excl. flora) - Map 3**



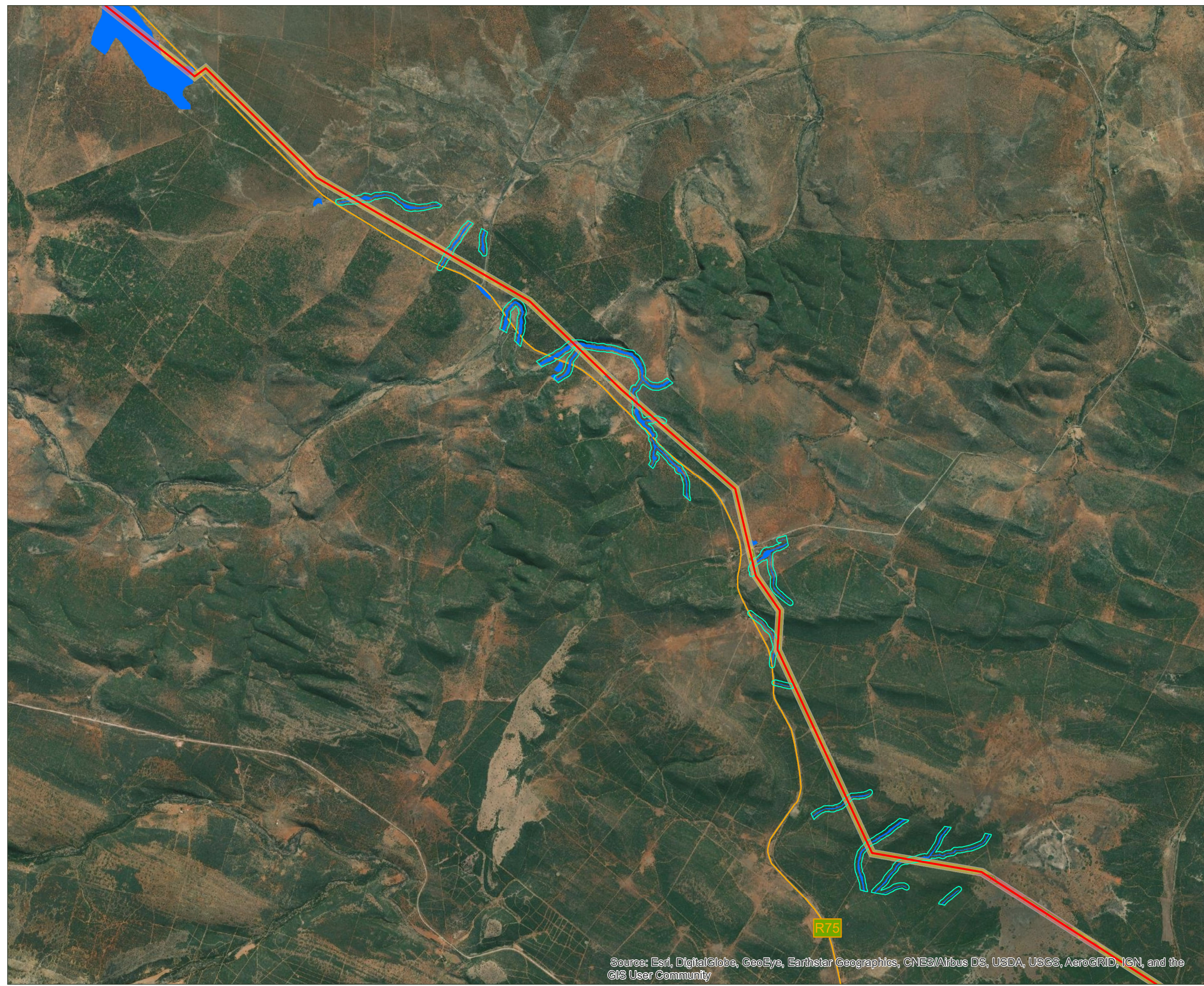
Legend

- Informal Cemetery Underneath Existing 132kV OHL
 - Area Investigated by Specialists
 - New Wolf - Skilpad - Grassridge 132kV OHL
 - 32m Buffer from Delineated Wetlands and Watercourses
 - Delineated Wetlands and Watercourses
- Fauna Sensitivity**
- Intermediate
 - Low
 - Moderately High

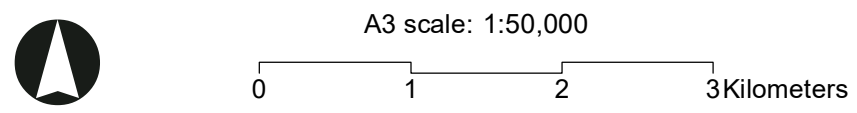
Total length of the line is considered 'high sensitivity' for avifauna.

Notes:
Aerial Imagery: ESRI
No site specific sensitivities for:
Palaeontology, RFI, Geotech,
Agriculture, CAA, Visual

Date: 2022/03/28 Version: 0

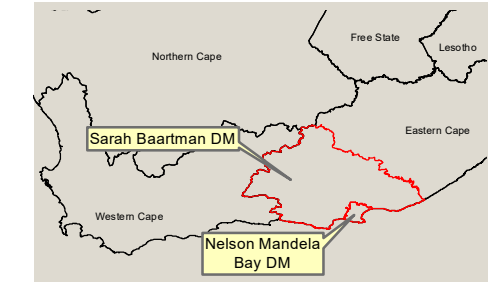


Source: Esri, DigitalGlobe, GeoEye, Earthstar Geographics, CNES/Airbus DS, USDA, USGS, AeroGRID, IGN, and the GIS User Community



Job No: 1001792 Map by: WL
Projection: WGS_1984_UTM_Zone_35S

**Wolf-Skilpad-Grassridge 132kV Transmission Line
Environmental Sensitivities (excl. flora) - Map 4**



Legend

- Informal Cemetery Underneath Existing 132kV OHL
- Area Investigated by Specialists
- New Wolf - Skilpad - Grassridge 132kV OHL
- 32m Buffer from Delineated Wetlands and Watercourses
- Delineated Wetlands and Watercourses

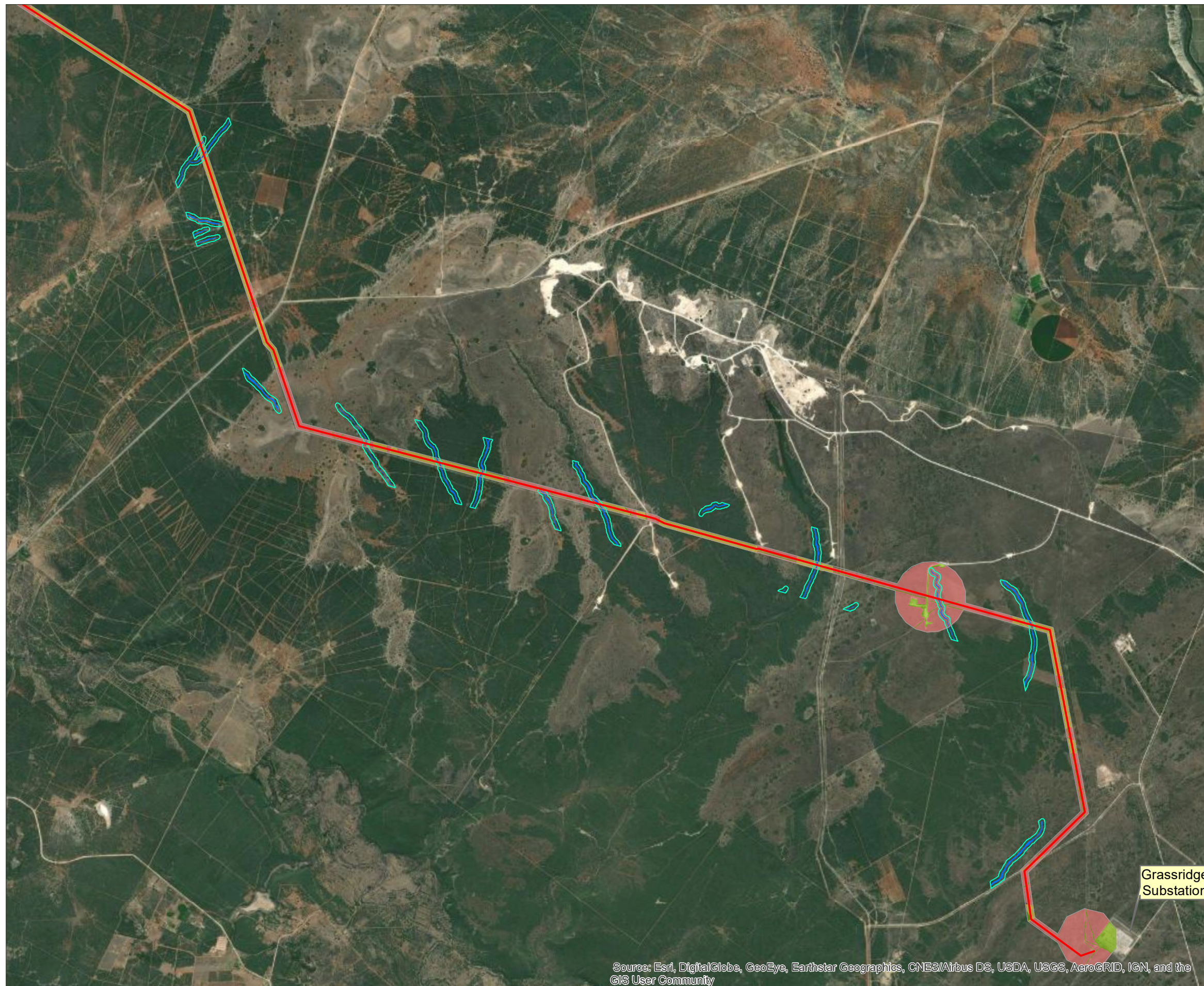
Fauna Sensitivity

- Intermediate
- Low
- Moderately High

Total length of the line is considered 'high sensitivity' for avifauna.

Notes:
Aerial Imagery: ESRI
No site specific sensitivities for:
Palaeontology, RFI, Geotech,
Agriculture, CAA, Visual

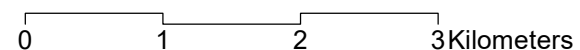
Date: 2022/03/28 Version: 0



Source: Esri, DigitalGlobe, GeoEye, Earthstar Geographics, CNES/Airbus DS, USDA, USGS, AeroGRID, IGN, and the GIS User Community



A3 scale: 1:55,000



Job No: 1001792 Map by: WL

Projection: WGS_1984_UTM_Zone_35S

**Wolf-Skilpad-Grassridge 132kV Transmission Line
Environmental Sensitivities (excl. flora) - Map 5**