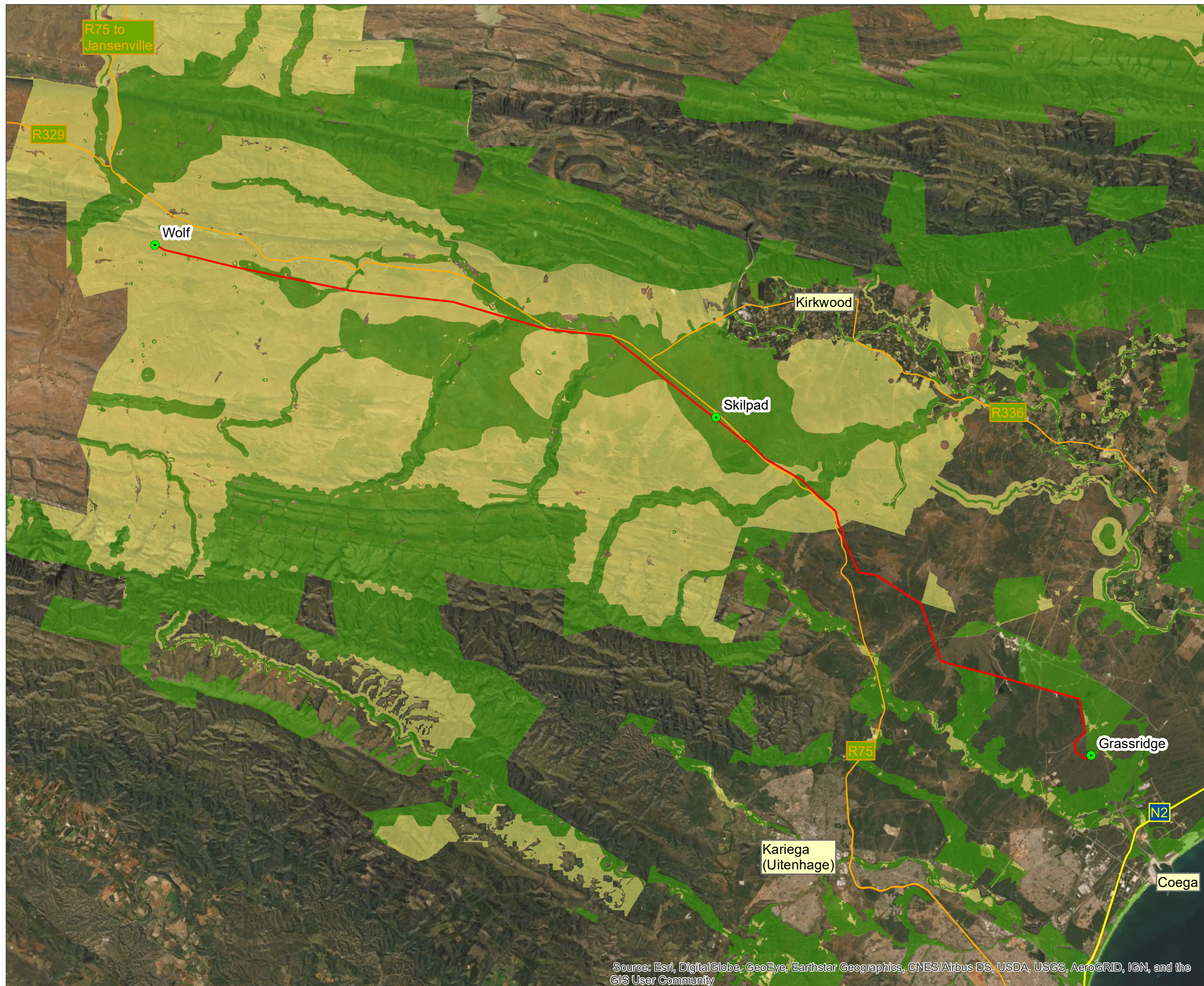


Legend

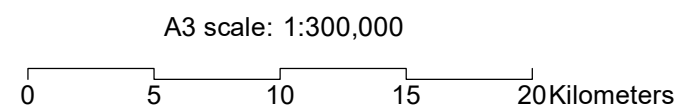
- Substations
- New Wolf - Skilpad - Grassridge 132kV OHL
- Critical Biodiversity Areas
- Ecological Support Areas



Source: Esri, DigitalGlobe, GeoEye, Earthstar Geographics, CNES/Airbus DS, USDA, USGS, AeroGRID, IGN, and the GIS User Community

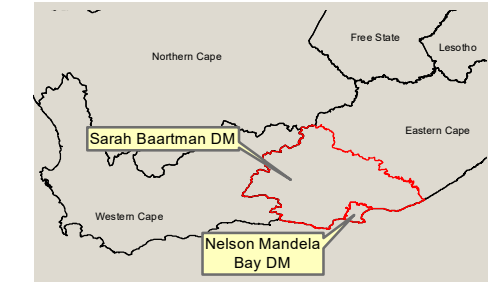
Notes:
Aerial Imagery: ESRI

Date: 2022/03/29 Version: 0



Job No: 1001792 Map by: WL
Projection: WGS_1984_UTM_Zone_35S

Wolf-Skilpad-Grassridge 132kV Transmission Line
Critical Biodiversity Areas



Legend

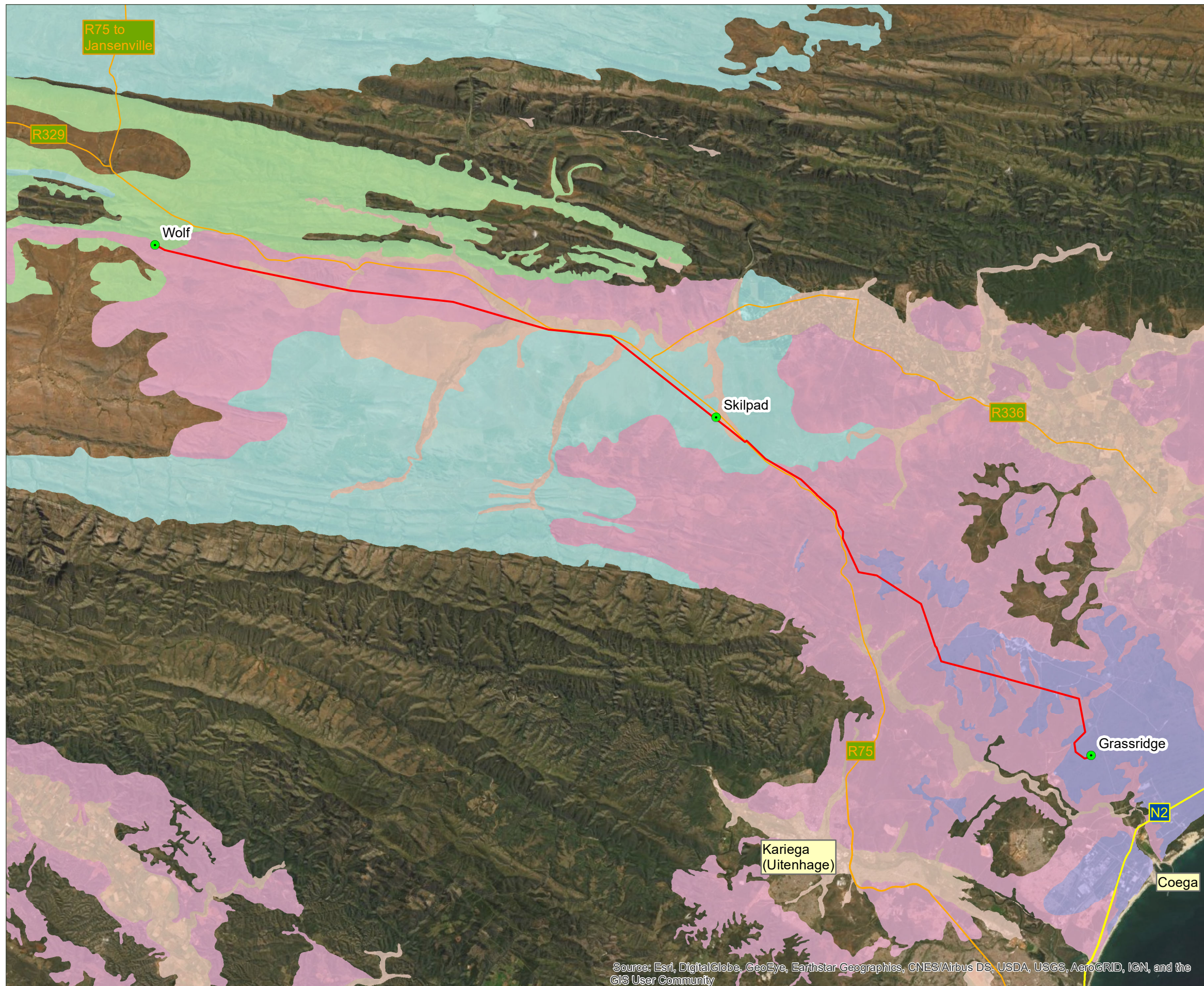
- Substations
- New Wolf - Skilpad - Grassridge 132kV OHL

Vegetation Type (2018 VegMap)

- Albany Alluvial Vegetation (Endangered)
- Eastern Gwarrieveld (Least Threatened)
- Grassridge Bontveld (Least Threatened)
- Sundays Arid Thicket (Least Threatened)
- Sundays Valley Thicket (Least Threatened)

Notes:
Aerial Imagery: ESRI

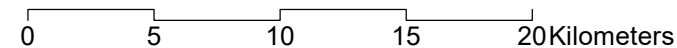
Date: 2022/03/29 Version: 0



Source: Esri, DigitalGlobe, GeoEye, Earthstar Geographics, CNES/Airbus DS, USDA, USGS, AeroGRID, IGN, and the GIS User Community



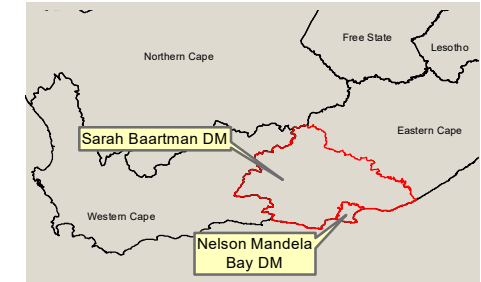
A3 scale: 1:300,000



Job No: 1001792 Map by: WL

Projection: WGS_1984_UTM_Zone_35S

**Wolf-Skilpad-Grassridge 132kV Transmission Line
Vegetation Type & Ecosystem Status**

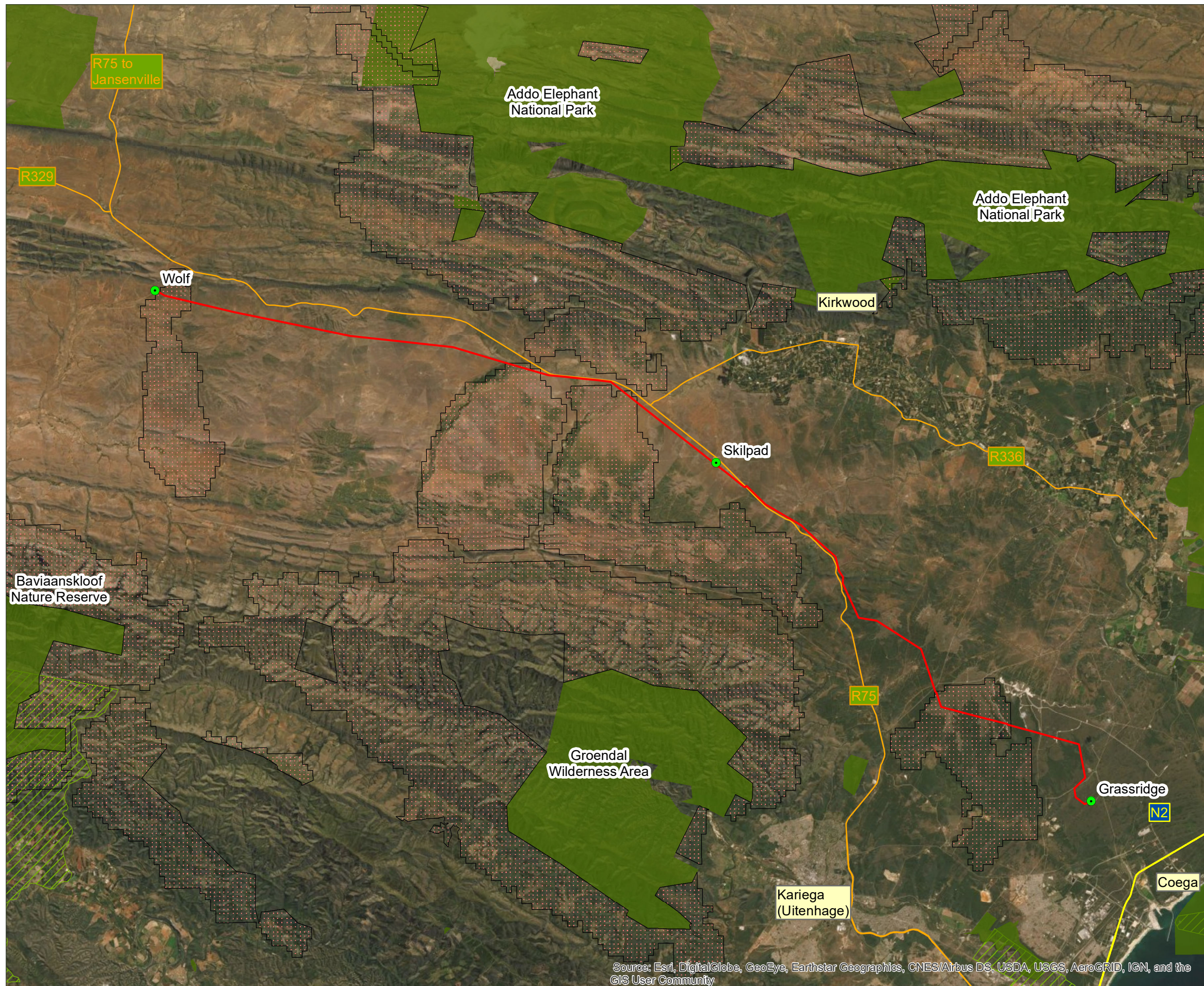


Legend

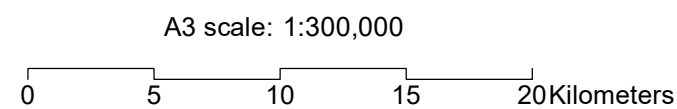
- Substations
- New Wolf - Skilpad - Grassridge 132kV OHL
- NPAES Focus Areas
- SA Protected Areas
- Important Bird Area
- SA Conservation Areas (None)

Notes:
Aerial Imagery: ESRI

Date: 2022/03/29 Version: 0

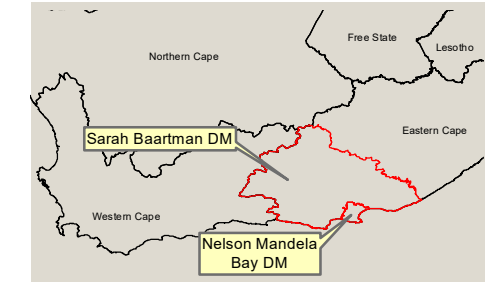


Source: Esri, DigitalGlobe, GeoEye, Earthstar Geographics, CNES/Airbus DS, USDA, USGS, AeroGRID, IGN, and the GIS User Community



Job No: 1001792 Map by: WL
Projection: WGS_1984_UTM_Zone_35S

**Wolf-Skilpad-Grassridge 132kV Transmission Line
Conservation Areas**



Legend

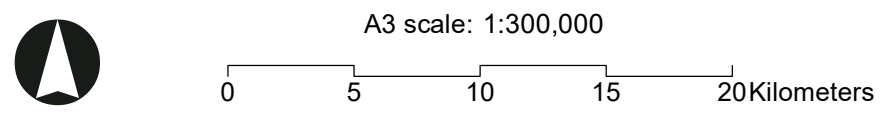
- Substations
- Rivers
- New Wolf - Skilpad - Grassridge 132kV OHL
- Artificial Waterbodies
- Natural Waterbodies
- Unclassified Waterbodies

Notes:
Aerial Imagery: ESRI
More detail in environmental sensitivity maps and freshwater specialist assessment.

Date: 2022/03/29 Version: 0



Source: Esri, DigitalGlobe, GeoEye, Earthstar Geographics, CNES/Airbus DS, USDA, USGS, AeroGRID, IGN, and the GIS User Community



Job No: 1001792 Map by: WL
Projection: WGS_1984_UTM_Zone_35S

Wolf-Skilpad-Grassridge 132kV Transmission Line
Rivers and Wetlands