



COPYRIGHT

THIS MATERIAL AND INFORMATION WHICH IT CONTAINS IS SUBJECT TO COPYRIGHT AND MAY NOT BE REPRODUCED OR UTILIZED IN ANY WAY WHATSOEVER WITHOUT THE WRITTEN CONSENT OF

NURIZON CONSULTING ENGINEERS

NOTES:

1. PLAN COMPILED IN ACCORDANCE WITH THE REGULATION 2(2) OF THE MINERAL AND RESOURCES DEVELOPMENT ACT 2002.

LEGEND:

- ROADS
- PLATFORMS / CLEARED AREAS
- EXISTING 400KV POWER LINE
- EXISTING 88KV POWER LINE
- PROPOSED 88KV POWER LINE
- EXISTING PYLON
- PROPOSED PYLON
- FUTURE ROAD
- RESERVE LIMIT

REV	DATE	DESCRIPTION	BY
A	22/01/2014	FOR INFORMATION	H.M

CLIENT
YOCTOLUX INVESTMENTS (Pty) Ltd

SIGNATURE: _____

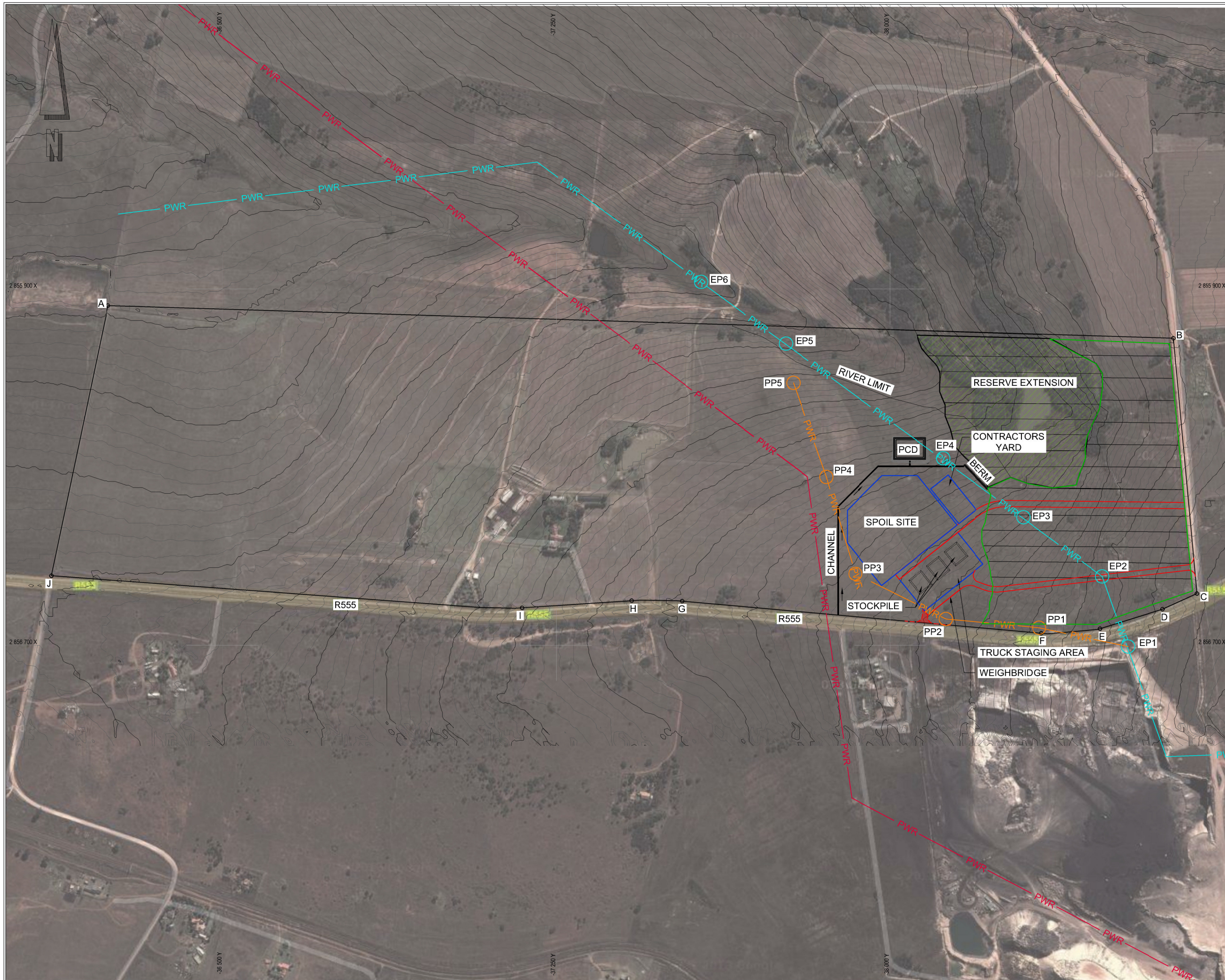
NURIZON CONSULTING (PTY) LTD
 Route 21 Corporate Park 118 Sovereign Drive Irene X 72
 Tel: +27 12345 3649 Fax: +27 12345 3598
 Postnet Suite 282 Private Bag X 8 Elarduspark 0047

PROJECT DESCRIPTION
YOCTOLUX COAL MINE

TITLE
INFRASTRUCTURE LAYOUT

DESIGN BY	H. MULLER	DRAWN BY	A. MARAIS
DESIGN CHECKED	H. MULLER	DWG CHECKED	H. MULLER
SIGNED	_____	SIGNED	_____
DRAWN DATE	JANUARY 2014	APPROVED DATE	JANUARY 2014

FOR INFORMATION	
SCALE	PAPER SIZE
1:2 000	(A1)
CO-ORDINATE SYSTEM	REVISION
WGS84 - Lo 29	A
DWG NO P0154-CIV-GEN-0102	



COPYRIGHT

THIS MATERIAL AND INFORMATION WHICH IT CONTAINS IS SUBJECT TO COPYRIGHT AND MAY NOT BE REPRODUCED OR UTILIZED IN ANY WAY WHATSOEVER WITHOUT THE WRITTEN CONSENT OF

NURIZON CONSULTING ENGINEERS

NOTES:

1. PLAN COMPILED IN ACCORDANCE WITH THE REGULATION 2(2) OF THE MINERAL AND RESOURCES DEVELOPMENT ACT 2002.

LEGEND:

- ROADS
- PLATFORMS / CLEARED AREAS
- EXISTING 400KV POWER LINE
- EXISTING 88KV POWER LINE
- PROPOSED 88KV POWER LINE
- EXISTING PYLON
- PROPOSED PYLON
- FUTURE ROAD
- RESERVE LIMIT
- RESERVE EXTENSION

ELANDSPRUIT LIST OF CO-ORDINATES

POINT	Y	X
A	-36243.111	2855937.273
B	-38635.934	2856010.648
C	-38688.376	2856583.844
D	-38611.767	2856618.906
E	-38471.640	2856662.847
F	-38339.608	2856673.055
G	-37532.082	2856600.809
H	-37419.600	2856569.792
I	-37173.814	2856615.945
J	-36116.542	2856543.985

REV	DATE	DESCRIPTION	BY
A	22/01/2014	FOR INFORMATION	H.M

REVISIONS

CLIENT
YOCTOLUX INVESTMENTS (Pty) Ltd

SIGNATURE: _____

NURIZON CONSULTING (PTY) LTD
 Route 21 Corporate Park 118 Sovereign Drive Irene X 72
 Tel: +27 12345 3649
 Fax: +27 12345 3598

Postnet Suite 282 Private Bag X 8 Elarduspark 0047

PROJECT DESCRIPTION
YOCTOLUX COAL MINE

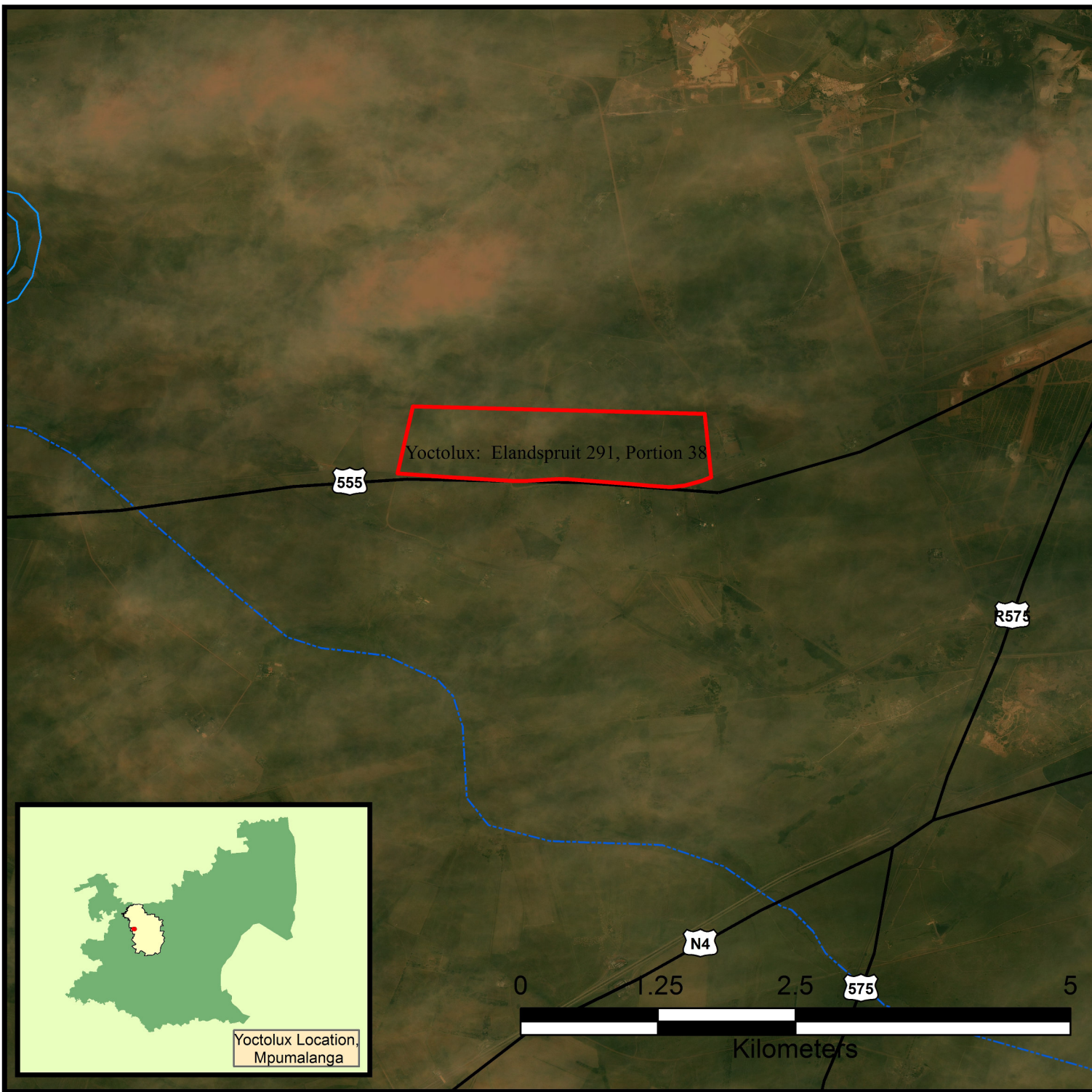
TITLE
GENERAL LAYOUT INCLUDES RESERVE EXTENSION

DESIGN BY	H. MULLER	DRAWN BY	A. MARAIS
DESIGN CHECKED	H. MULLER	DWG CHECKED	H. MULLER
SIGNED	_____	SIGNED	_____
DRAWN DATE	JANUARY 2014	APPROVED DATE	JANUARY 2014

FOR INFORMATION


SCALE	1:4 000	PAPER SIZE	(A1)
CO-ORDINATE SYSTEM	WGS84 - Lo 29	REVISION	A
DWG NO	P0154-CIV-GEN-0103		

Yoctolux Investments (Pty) Ltd SPOT Image Proposed Yoctolux Coal Mine



Legend

 Yoctolux

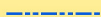
 Main Roads

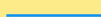
Rivers

River Classes



 DW *Dam Wall*

 NPR *Non-Perennial River*

 PR *Perennial River*



COPYRIGHT IS VESTED IN ENVASS IN TERMS OF THE COPYRIGHT ACT (ACT 88 OF 1978) AND NO USE OR REPRODUCTION OR DUPLICATION THEREOF MAY OCCUR WITHOUT THE WRITTEN CONSENT OF THE AUTHOR*

1:50 000

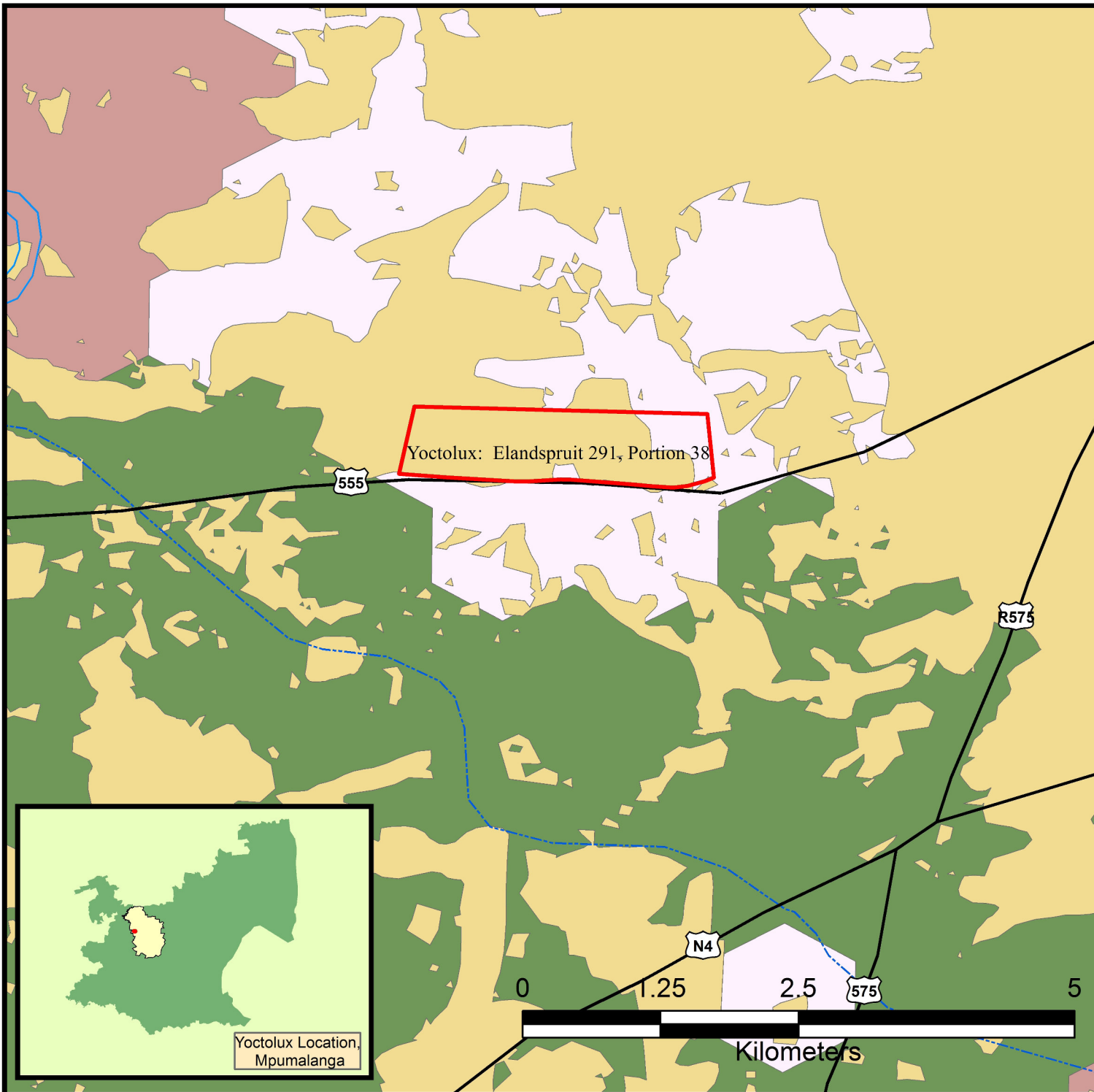
Author: JP Nortje

Date: 2013/11/14

"Your Partner in Calculating Environmental Solutions"

ENVIASS 
ENVIRONMENTAL ASSURANCE (Pty)Ltd

Yoctolux Investments (Pty) Ltd Terrestrial Biodiversity Proposed Yoctolux Coal Mine



Legend

- Yoctolux
- Main Roads

Rivers

River Classes

- DW Dam Wall
- NPR Non-Perennial River
- PR Perennial River

Terrestrial Biodiversity Assessment

ASSESSMENT

- 1 - Protected
- 2 - Irreplaceable
- 3 - Highly Significant
- 4 - Important & Necessary
- 5 - Least Concern
- 6 - No Natural Habitat Remaining



COPYRIGHT IS VESTED IN ENVASS IN TERMS OF THE COPYRIGHT ACT (ACT 88 OF 1978) AND NO USE OR REPRODUCTION OR DUPLICATION THEREOF MAY OCCUR WITHOUT THE WRITTEN CONSENT OF THE AUTHOR*

Author: JP Nortje

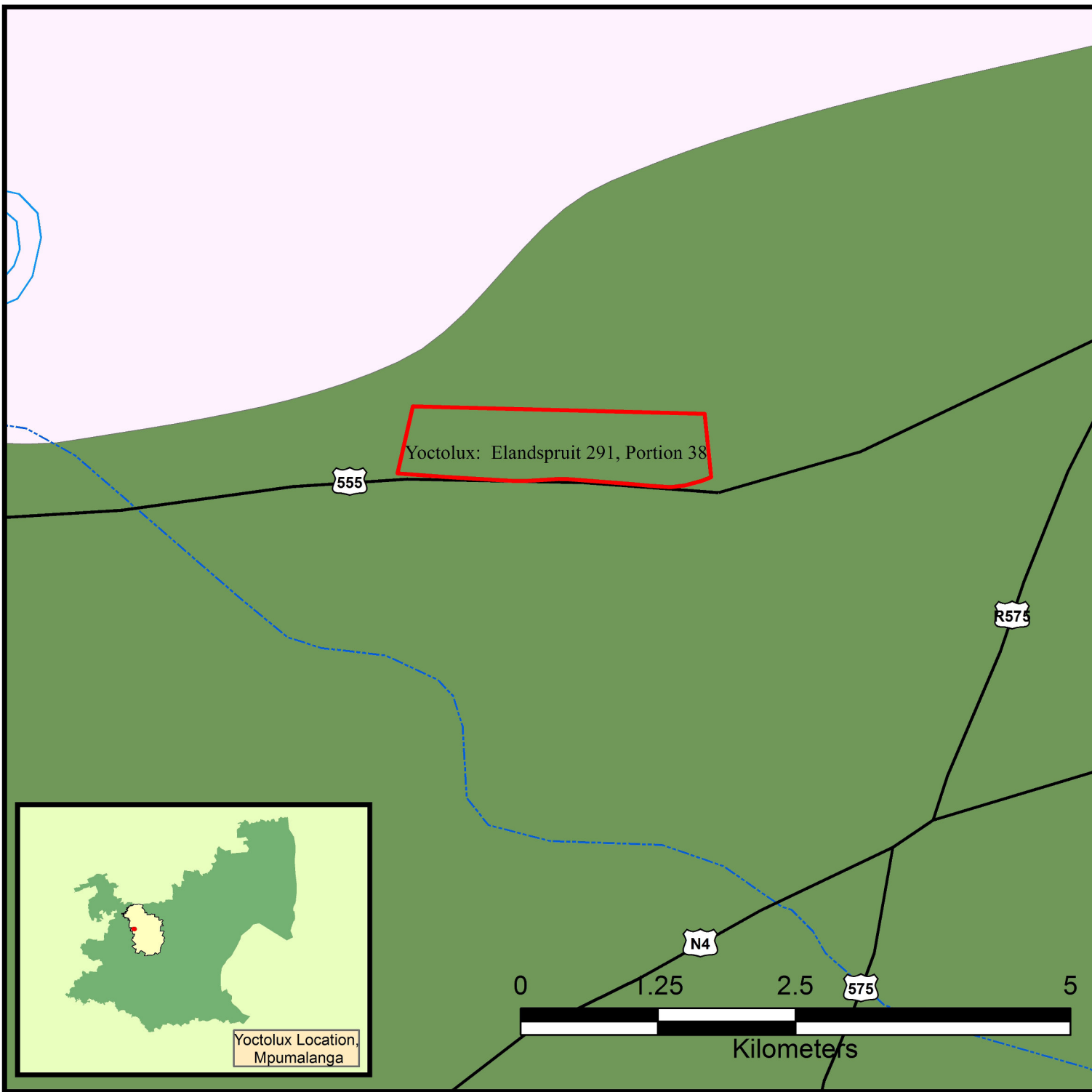
Date: 2013/11/14

1:50 000

"Your Partner in Calculating Environmental Solutions"

ENVASS ENVIRONMENTAL ASSURANCE (Pty)Ltd

Yoctolux Investments (Pty) Ltd Vegetation Proposed Yoctolux Coal Mine



Legend

- Yoctolux
 - Main Roads
- ### Rivers
- #### River Classes
- DW Dam Wall
 - NPR Non-Perennial River
 - PR Perennial River
- ### Vegetation
- #### DESCRIPTIO
- Moist Sandy Highveld Grassland
 - Rocky Highveld Grassland



COPYRIGHT IS VESTED IN ENVASS IN TERMS OF THE COPYRIGHT ACT (ACT 88 OF 1978) AND NO USE OR REPRODUCTION OR DUPLICATION THEREOF MAY OCCUR WITHOUT THE WRITTEN CONSENT OF THE AUTHOR*

1:50 000

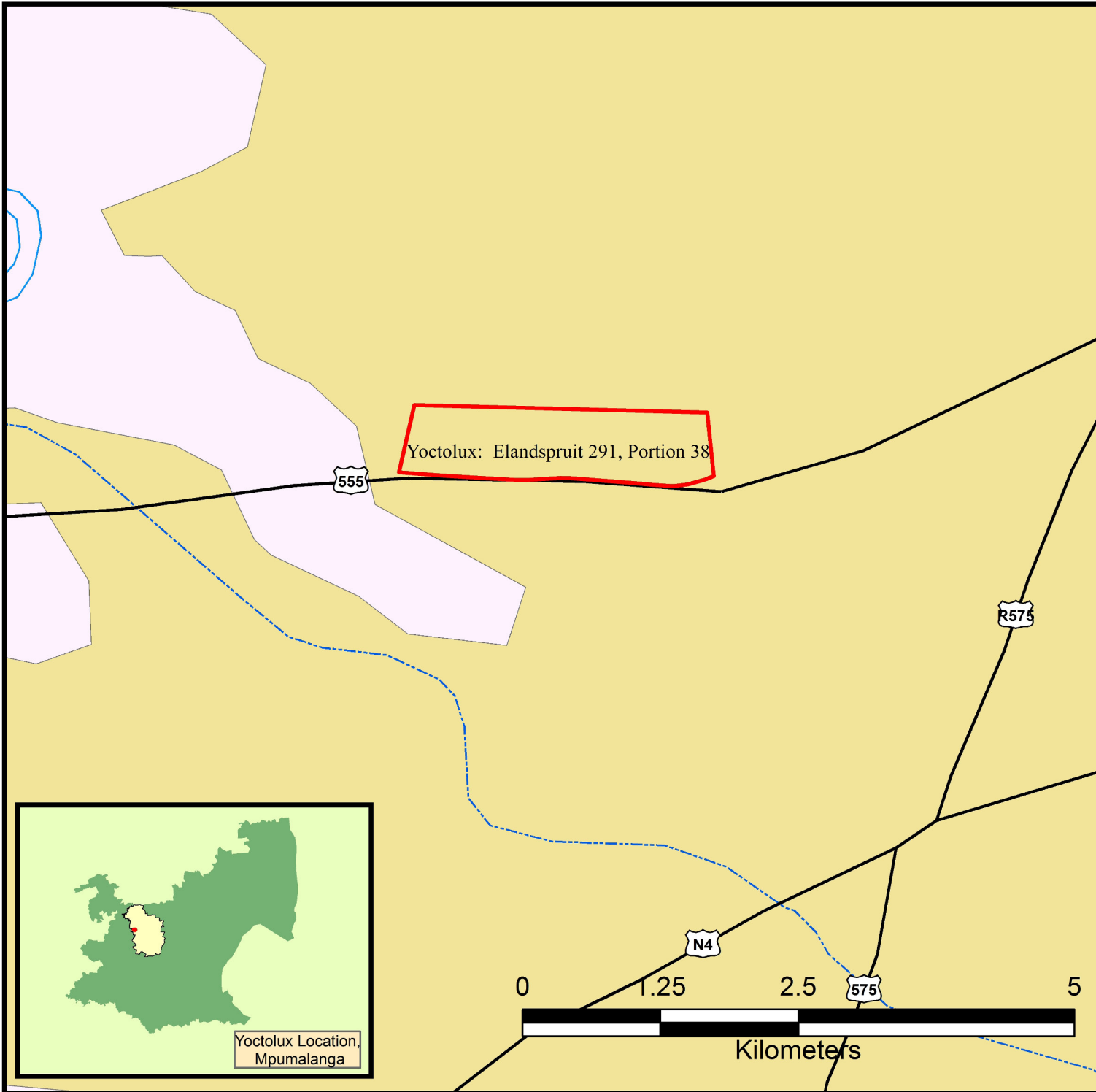
Author: JP Nortje

Date: 2013/11/14

"Your Partner in Calculating Environmental Solutions"



Yoctolux Investments (Pty) Ltd Land Capability Proposed Yoctolux Coal Mine



Legend

- Yoctolux
- Main Roads

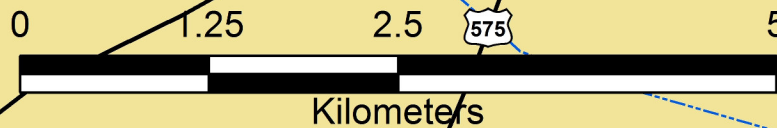
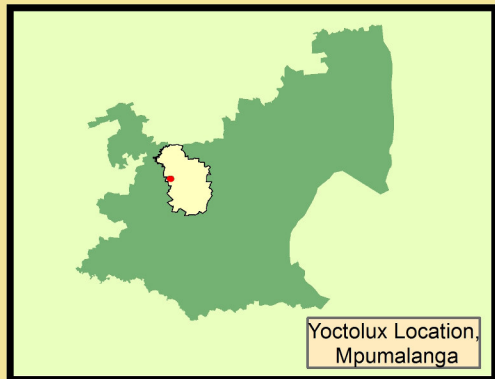
Rivers

River Classes

- DW Dam Wall
- NPR Non-Perennial River
- PR Perennial River

Land Capability Agriculture TYPE

- High
- Low
- Medium
- Very Low



1:50 000

COPYRIGHT IS VESTED IN ENVASS
IN TERMS OF THE COPYRIGHT ACT
(ACT 88 OF 1978) AND NO USE OR
REPRODUCTION OR DUPLICATION
THEREOF MAY OCCUR WITHOUT
THE WRITTEN CONSENT OF THE
AUTHOR*

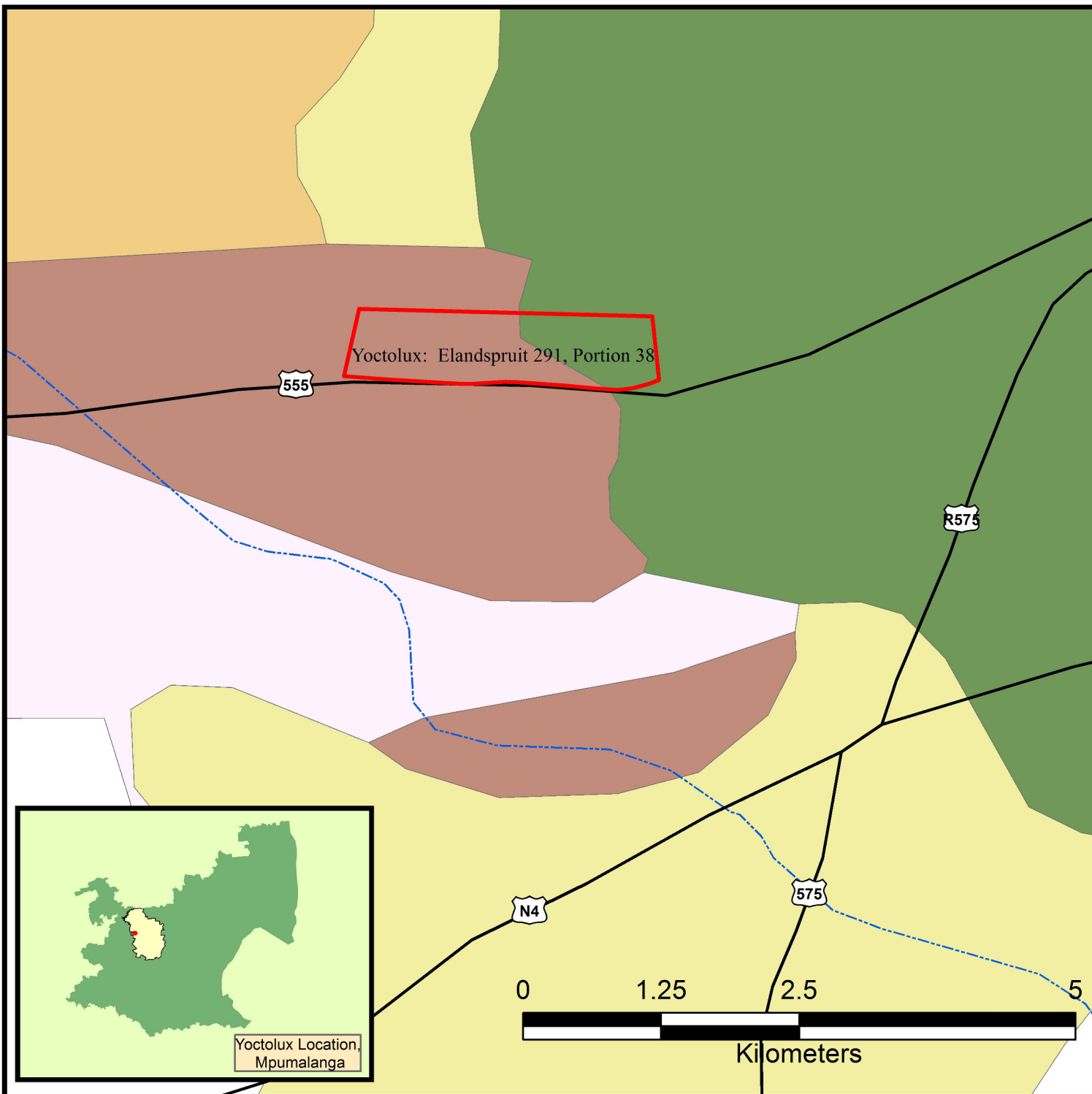
Author: JP Nortje

Date: 2013/11/14

"Your Partner in Calculating Environmental Solutions"



Yoctolux Investments (Pty) Ltd Geology Proposed Yoctolux Coal Mine



Legend

- Yoctolux
- Main Roads

Rivers

River Classes

- DW Dam Wall
- NPR Non-Perennial River
- PR Perennial River

Geology

Geology Class

- Dwyka Grp, Karoo Spgrp
- Loskop Fm, Transvaal Spgrp
- Madzaringwe Fm, Karoo Spgrp
- Vaalian Erathem
- Wilge River Fm, Waterberg Grp



COPYRIGHT IS VESTED IN ENVASS IN TERMS OF THE COPYRIGHT ACT (ACT 88 OF 1978) AND NO USE OR REPRODUCTION OR DUPLICATION THEREOF MAY OCCUR WITHOUT THE WRITTEN CONSENT OF THE AUTHOR*

1:50 000

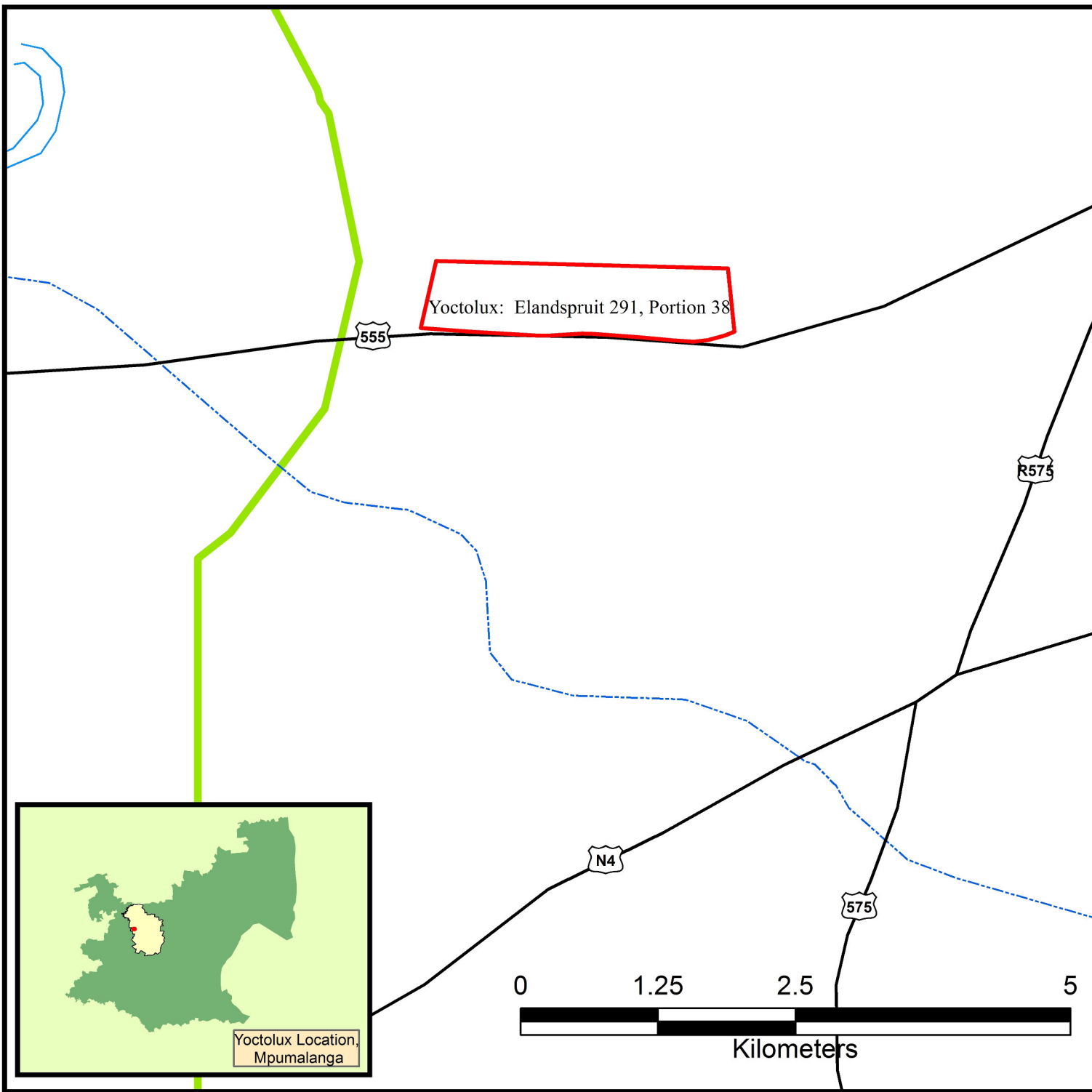
Author: JP Nortje

Date: 2013/11/14

"Your Partner in Calculating Environmental Solutions"



Yoctolux Investments (Pty) Ltd Ecological Corridors Proposed Yoctolux Coal Mine



Legend

- Yoctolux
- Main Roads
- Rivers**
- River Classes**
- DW *Dam Wall*
- NPR *Non-Perennial River*
- PR *Perennial River*
- Ecological Corridors



1:50 000

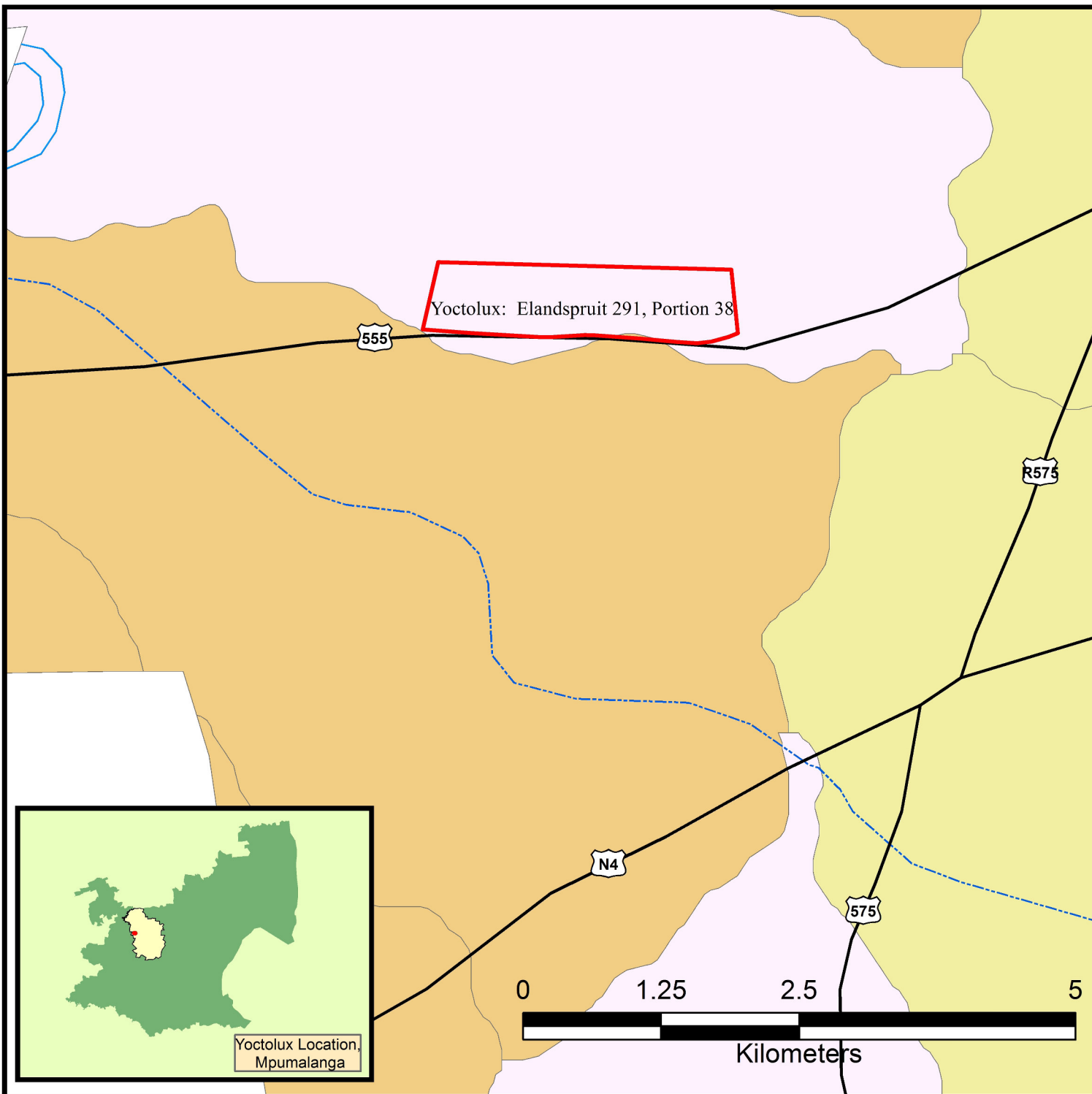
COPYRIGHT IS VESTED IN ENVASS IN TERMS OF THE COPYRIGHT ACT (ACT 88 OF 1978) AND NO USE OR REPRODUCTION OR DUPLICATION THEREOF MAY OCCUR WITHOUT THE WRITTEN CONSENT OF THE AUTHOR*

Author: JP Nortje

Date: 2013/11/14



Yoctolux Investments (Pty) Ltd Aquatic Biodiversity Proposed Yoctolux Coal Mine



Legend

- Yoctolux
- Main Roads

Rivers

River Classes

- DW Dam Wall
- NPR Non-Perennial River
- PR Perennial River

Aquatic Biodiversity Subcatchments

CATEGORY

- 1 - Protected
- 2 - Irreplaceable
- 3 - Highly Significant
- 4 - Important & Necessary
- 5 - Ecosystem Maintenance



COPYRIGHT IS VESTED IN ENVASS IN TERMS OF THE COPYRIGHT ACT (ACT 88 OF 1978) AND NO USE OR REPRODUCTION OR DUPLICATION THEREOF MAY OCCUR WITHOUT THE WRITTEN CONSENT OF THE AUTHOR*

Author: JP Nortje

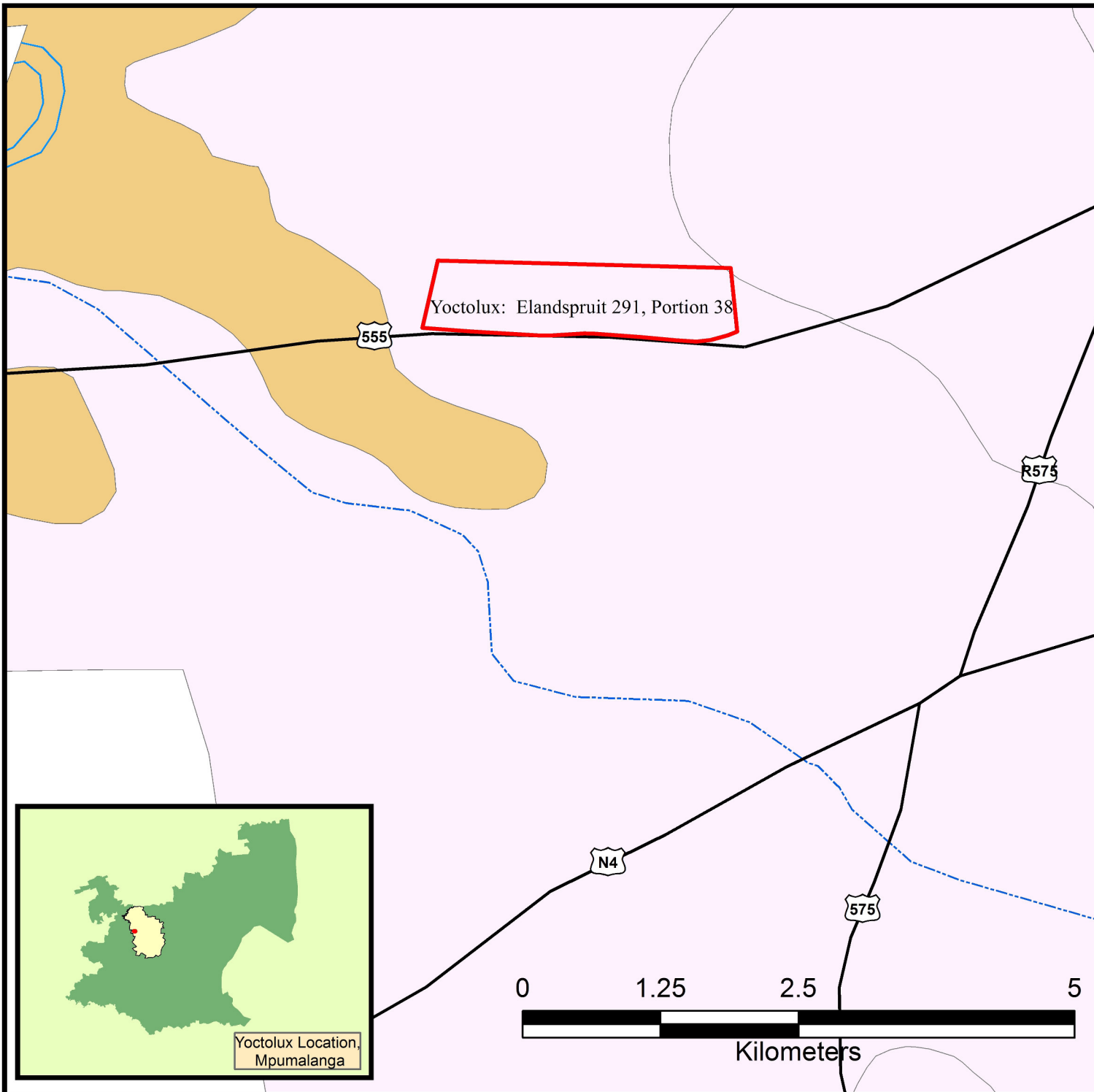
Date: 2013/11/14

1:50 000

"Your Partner in Calculating Environmental Solutions"



Yoctolux Investments (Pty) Ltd Agricultural Potential Proposed Yoctolux Coal Mine



Legend

- Yoctolux
- Main Roads
- Rivers**
- River Classes**
- DW Dam Wall
- NPR Non-Perennial River
- PR Perennial River
- Agricultural Potential**
- Agricultural Potential**
- ARABLE
- GRAZING
- WILDLIFE



COPYRIGHT IS VESTED IN ENVASS IN TERMS OF THE COPYRIGHT ACT (ACT 88 OF 1978) AND NO USE OR REPRODUCTION OR DUPLICATION THEREOF MAY OCCUR WITHOUT THE WRITTEN CONSENT OF THE AUTHOR*

1:50 000

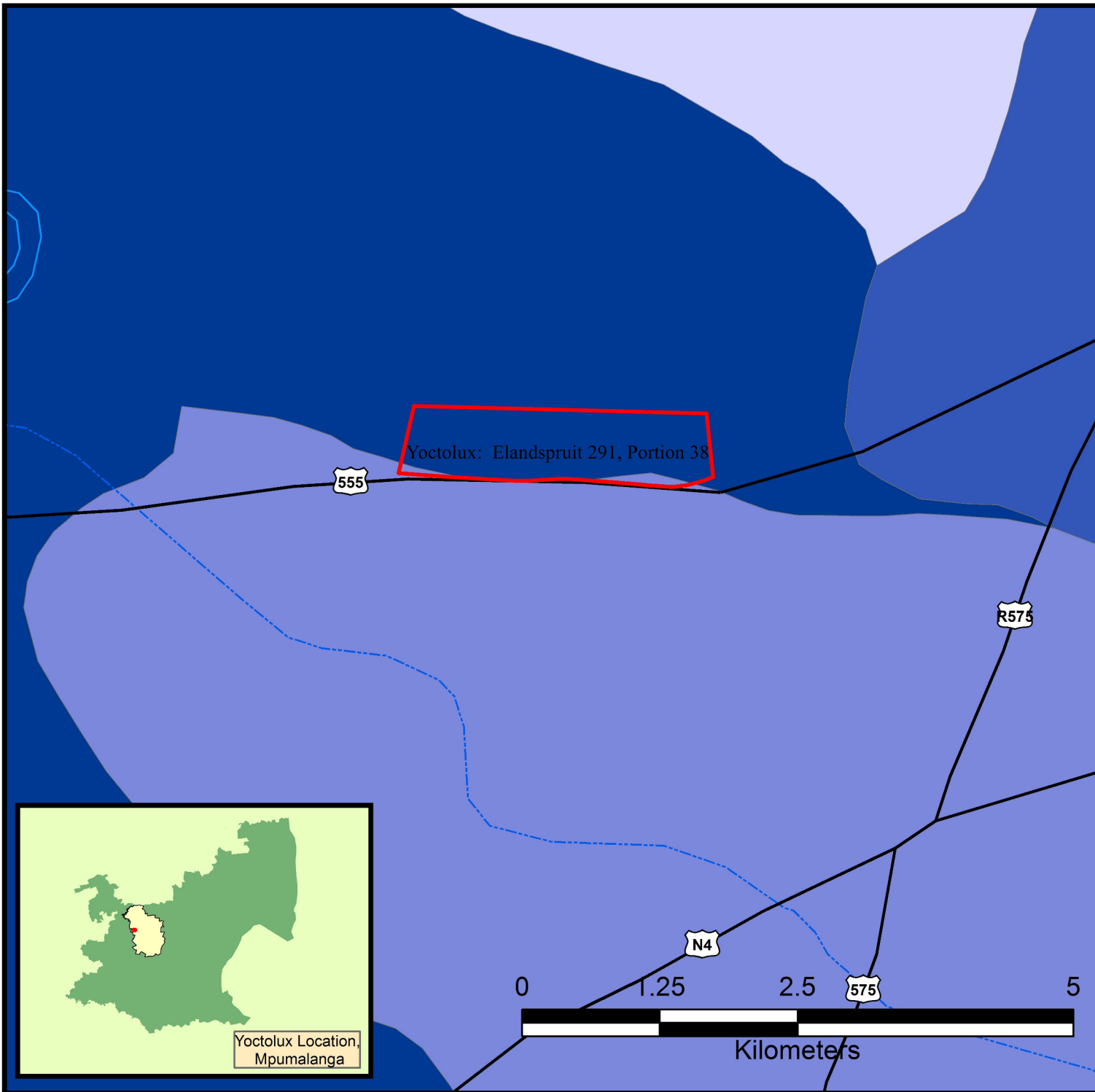
Author: JP Nortje

Date: 2013/11/14

"Your Partner in Calculating Environmental Solutions"



Yoctolux Investments (Pty) Ltd Catchment Areas Proposed Yoctolux Coal Mine



Legend

- Yoctolux
 - Main Roads
- Rivers**
- River Classes**
- DW Dam Wall
 - NPR Non-Perennial River
 - PR Perennial River
- Catchments**
- Mean Annual Runoff**
- 36.3
 - 38.1
 - 48.7
 - 52.5



COPYRIGHT IS VESTED IN ENVASS IN TERMS OF THE COPYRIGHT ACT (ACT 88 OF 1978) AND NO USE OR REPRODUCTION OR DUPLICATION THEREOF MAY OCCUR WITHOUT THE WRITTEN CONSENT OF THE AUTHOR*

1:50 000

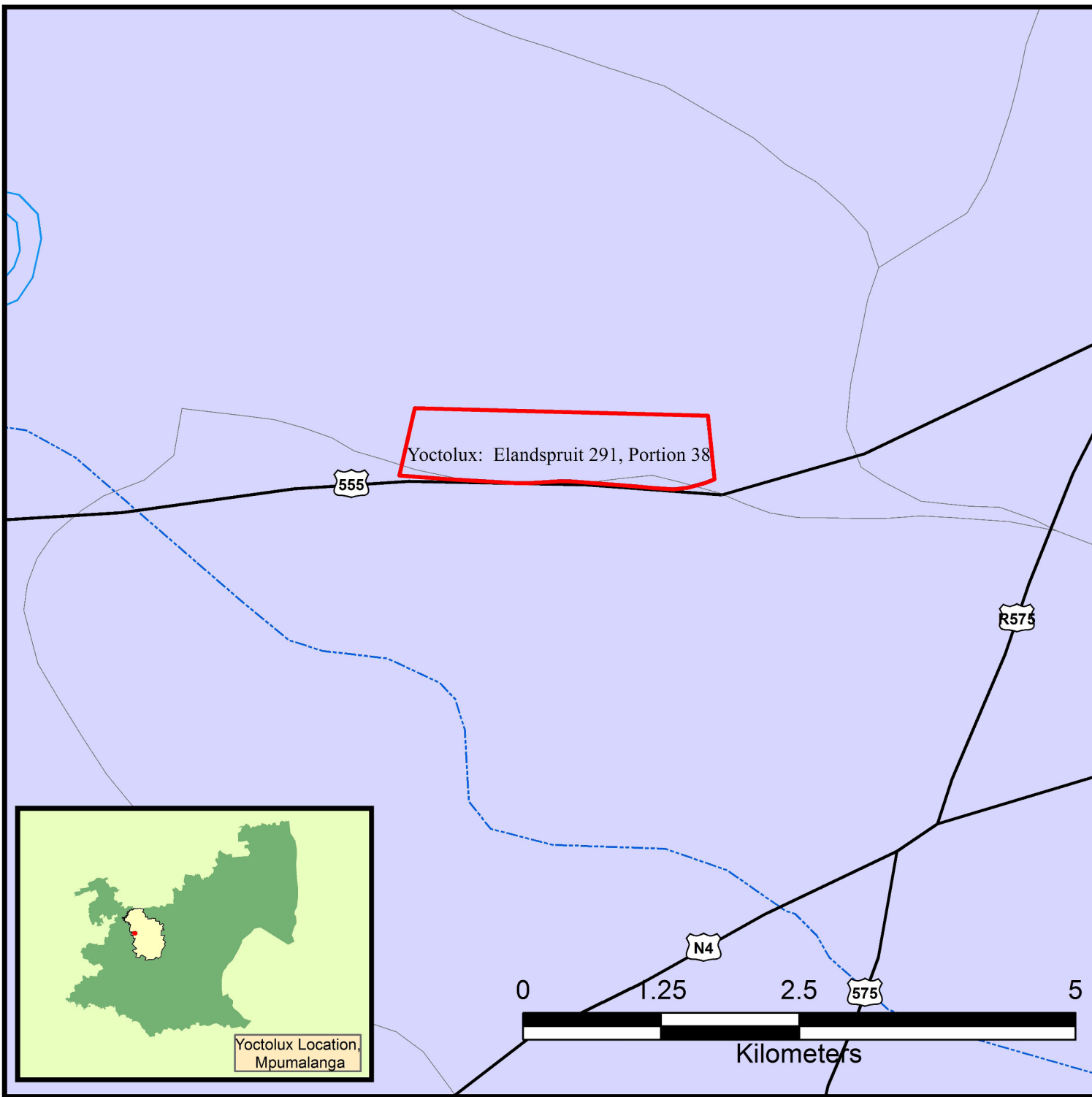
Author: JP Nortje

Date: 2013/11/14

"Your Partner in Calculating Environmental Solutions"

ENVASS 
ENVIRONMENTAL ASSURANCE (Pty)Ltd

Yoctolux Investments (Pty) Ltd Primary Catchment Area (B) Proposed Yoctolux Coal Mine



Legend

- Yoctolux
 - Main Roads
- ### Rivers
- #### River Classes
- DW *Dam Wall*
 - NPR *Non-Perennial River*
 - PR *Perennial River*
 - B



1:50 000

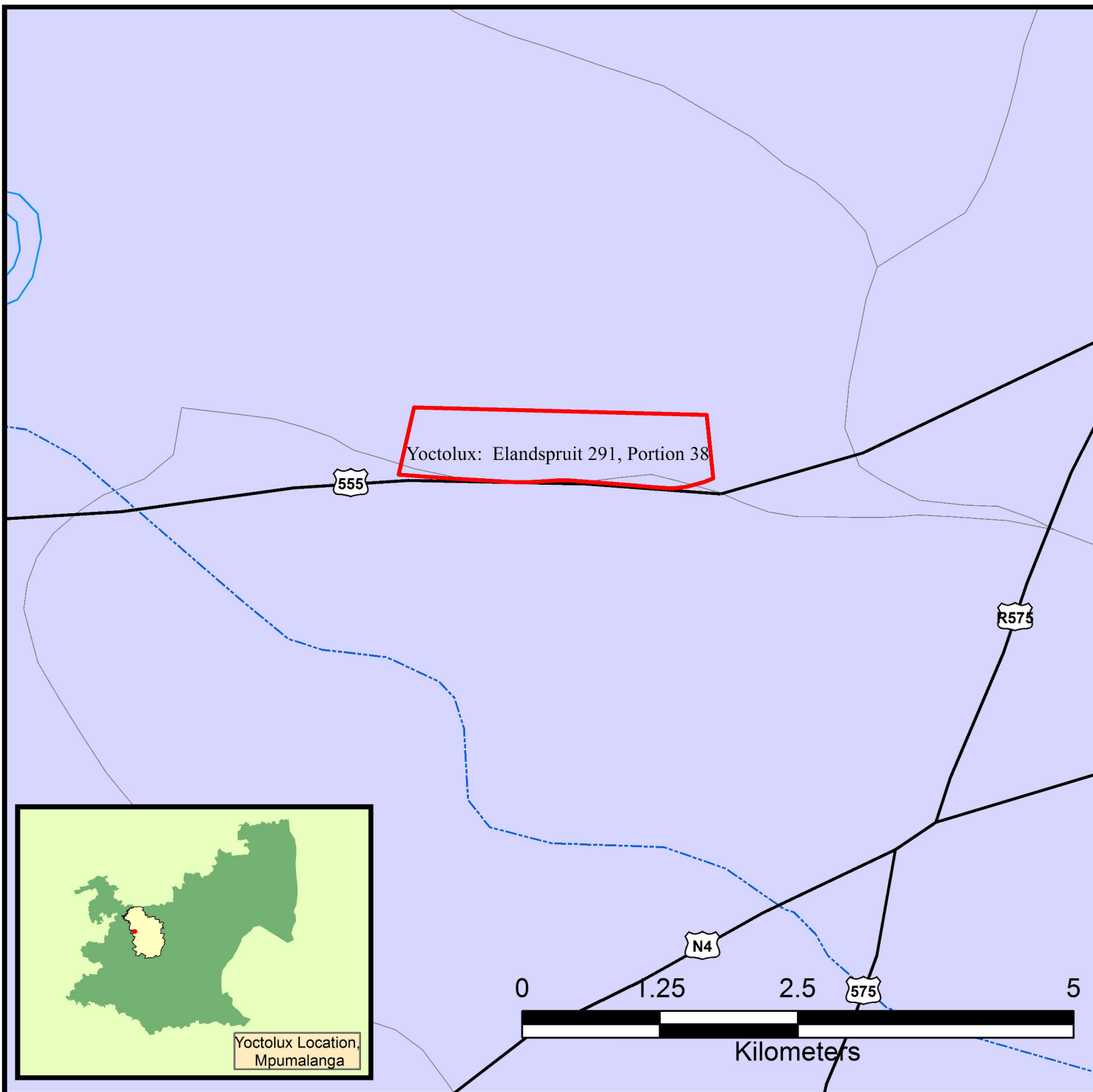
COPYRIGHT IS VESTED IN ENVASS IN TERMS OF THE COPYRIGHT ACT (ACT 88 OF 1978) AND NO USE OR REPRODUCTION OR DUPLICATION THEREOF MAY OCCUR WITHOUT THE WRITTEN CONSENT OF THE AUTHOR*

Author: JP Nortje

Date: 2013/11/14



Yoctolux Investments (Pty) Ltd Secondary Catchment Area (B1) Proposed Yoctolux Coal Mine



Legend

Yoctolux

Main Roads

Rivers

River Classes

DW *Dam Wall*

NPR *Non-Perennial River*

PR *Perennial River*

B1



COPYRIGHT IS VESTED IN ENVASS IN TERMS OF THE COPYRIGHT ACT (ACT 88 OF 1978) AND NO USE OR REPRODUCTION OR DUPLICATION THEREOF MAY OCCUR WITHOUT THE WRITTEN CONSENT OF THE AUTHOR*

1:50 000

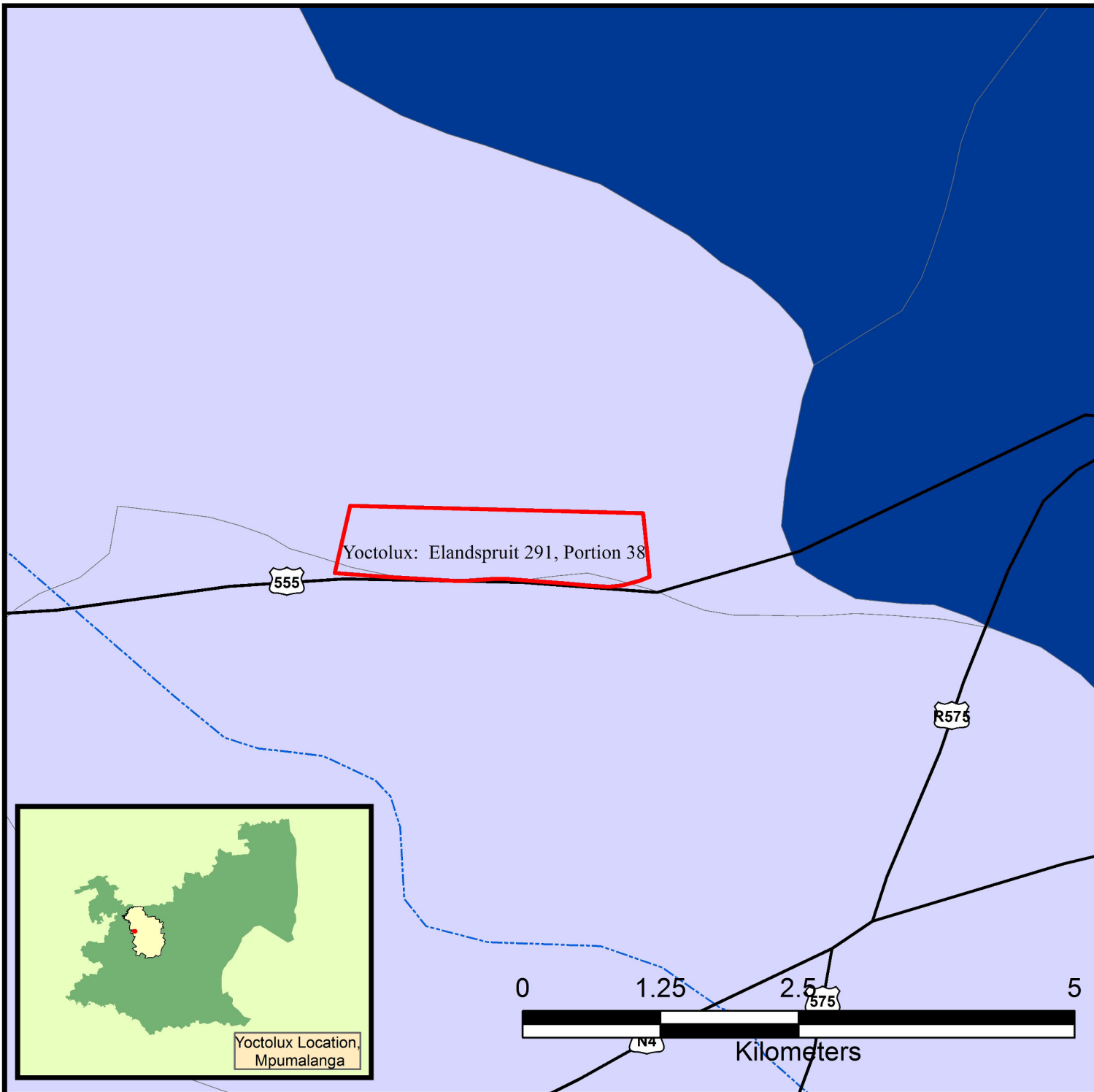
Author: JP Nortje

Date: 2013/11/14

"Your Partner in Calculating Environmental Solutions"

ENVASS ENVIRONMENTAL ASSURANCE (Pty)Ltd

Yoctolux Investments (Pty) Ltd Tertiary Catchment Areas Proposed Yoctolux Coal Mine



Legend

- Yoctolux
- Main Roads
- Rivers**
- River Classes**
- DW Dam Wall
- NPR Non-Perennial River
- PR Perennial River
- Catchments**
- TERTIARY**
- B11
- B12



COPYRIGHT IS VESTED IN ENVASS IN TERMS OF THE COPYRIGHT ACT (ACT 88 OF 1978) AND NO USE OR REPRODUCTION OR DUPLICATION THEREOF MAY OCCUR WITHOUT THE WRITTEN CONSENT OF THE AUTHOR*

1:50 000

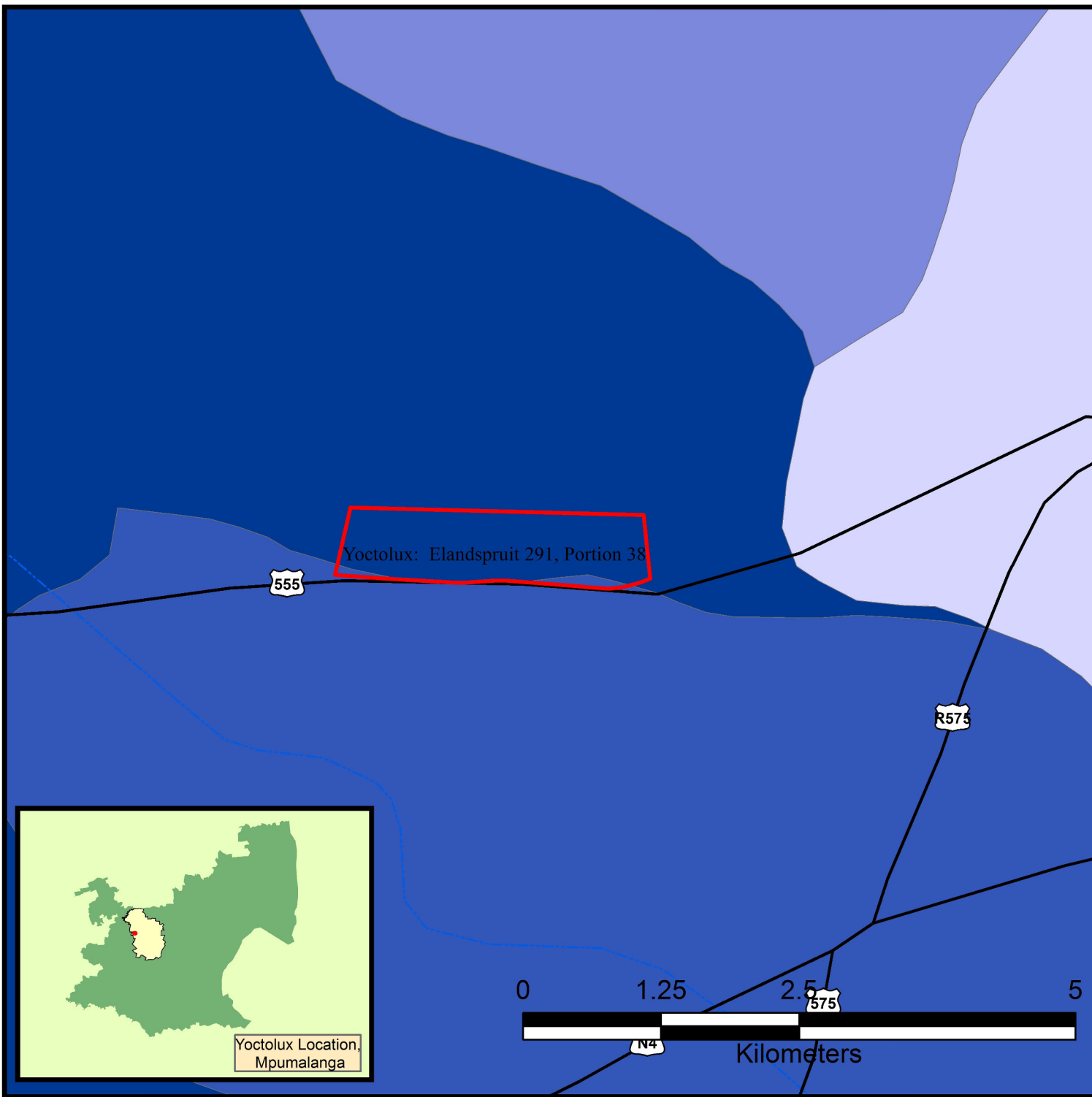
Author: JP Nortje

Date: 2013/11/14

"Your Partner in Calculating Environmental Solutions"



Yoctolux Investments (Pty) Ltd Quaternary Catchment Areas Proposed Yoctolux Coal Mine



Legend

- Yoctolux
- Main Roads

Rivers

River Classes

- DW Dam Wall
- NPR Non-Perennial River
- PR Perennial River

Catchments

Quaternary

- B11H
- B11J
- B12D
- B12E



COPYRIGHT IS VESTED IN ENVASS IN TERMS OF THE COPYRIGHT ACT (ACT 88 OF 1978) AND NO USE OR REPRODUCTION OR DUPLICATION THEREOF MAY OCCUR WITHOUT THE WRITTEN CONSENT OF THE AUTHOR*

1:50 000

Author: JP Nortje
Date: 2013/11/14

