

Matsopa Minerals (Pty) Ltd:
Goudlaagte & Geluk
Prospecting Right
Application

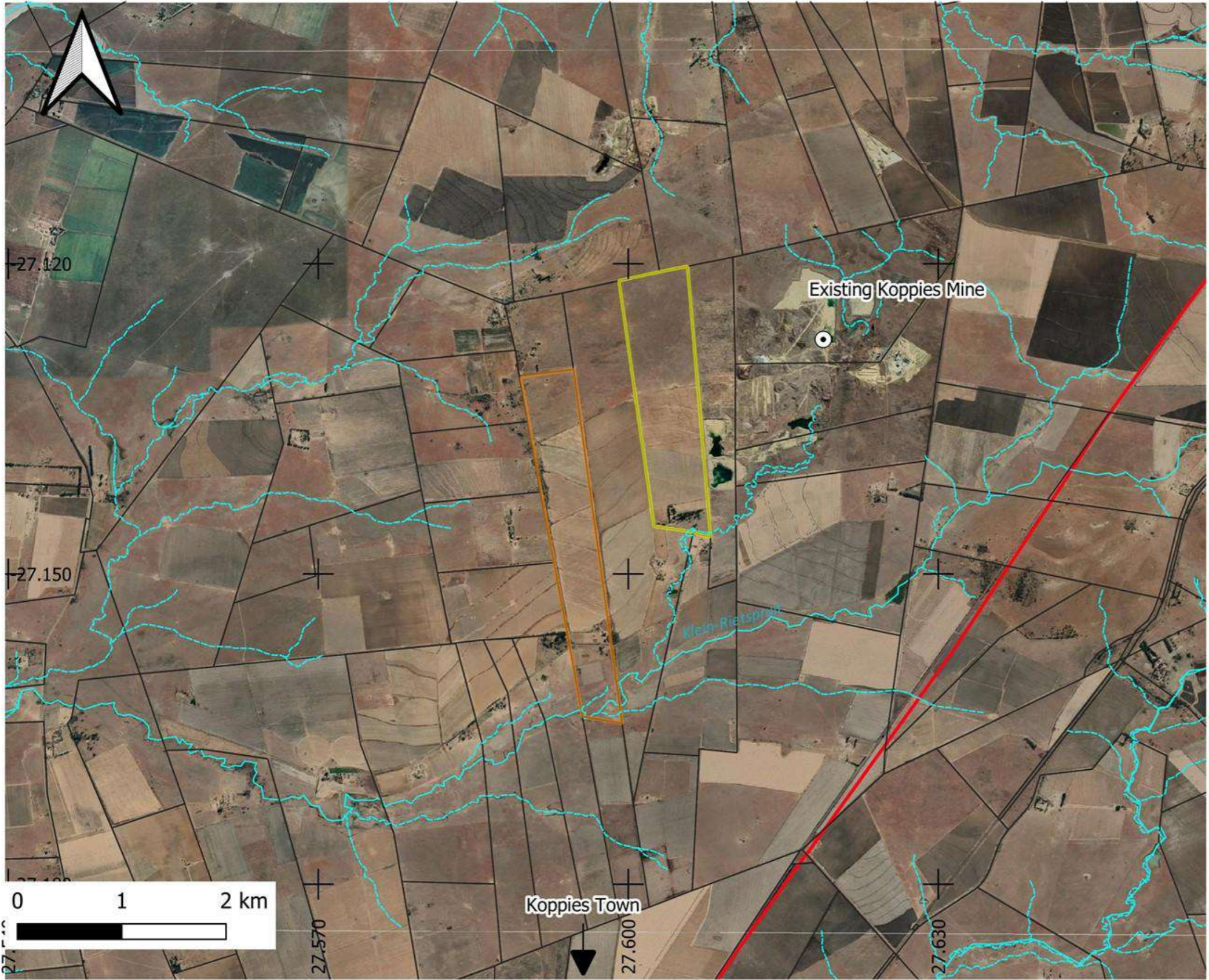
Regional Location

Prospecting Rights Application Areas

- Geluk 237
- Goudlaagte 238
- District Municipalities
- Local Municipalities
- National Roads
- Towns



info@cabangaenvironmental.co.za
tel: 011 794 7534



Matsopa Minerals (Pty) Ltd
Goudlaagte & Geluk
Prospecting Right
Application

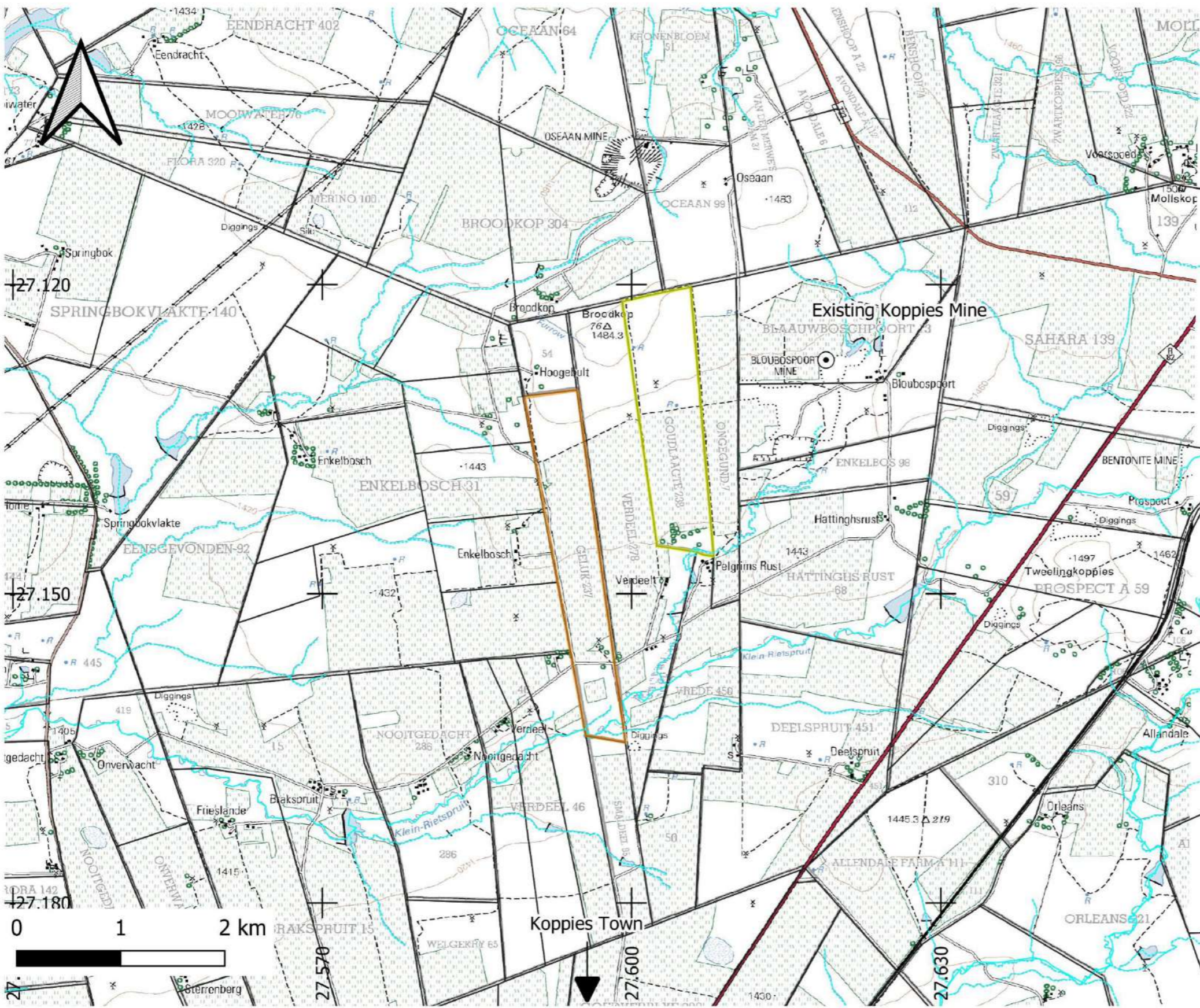
Local Setting

Legend

- Geluk 237
- Goudlaagte 238
- R82
- Rivers
- Non- perennials



info@cabangaenvironmental.co.za
tel:011 794 7534



Matsopa Minerals (Pty) Ltd
 Goudlaagte & Geluk
 Prospecting Right
 Application

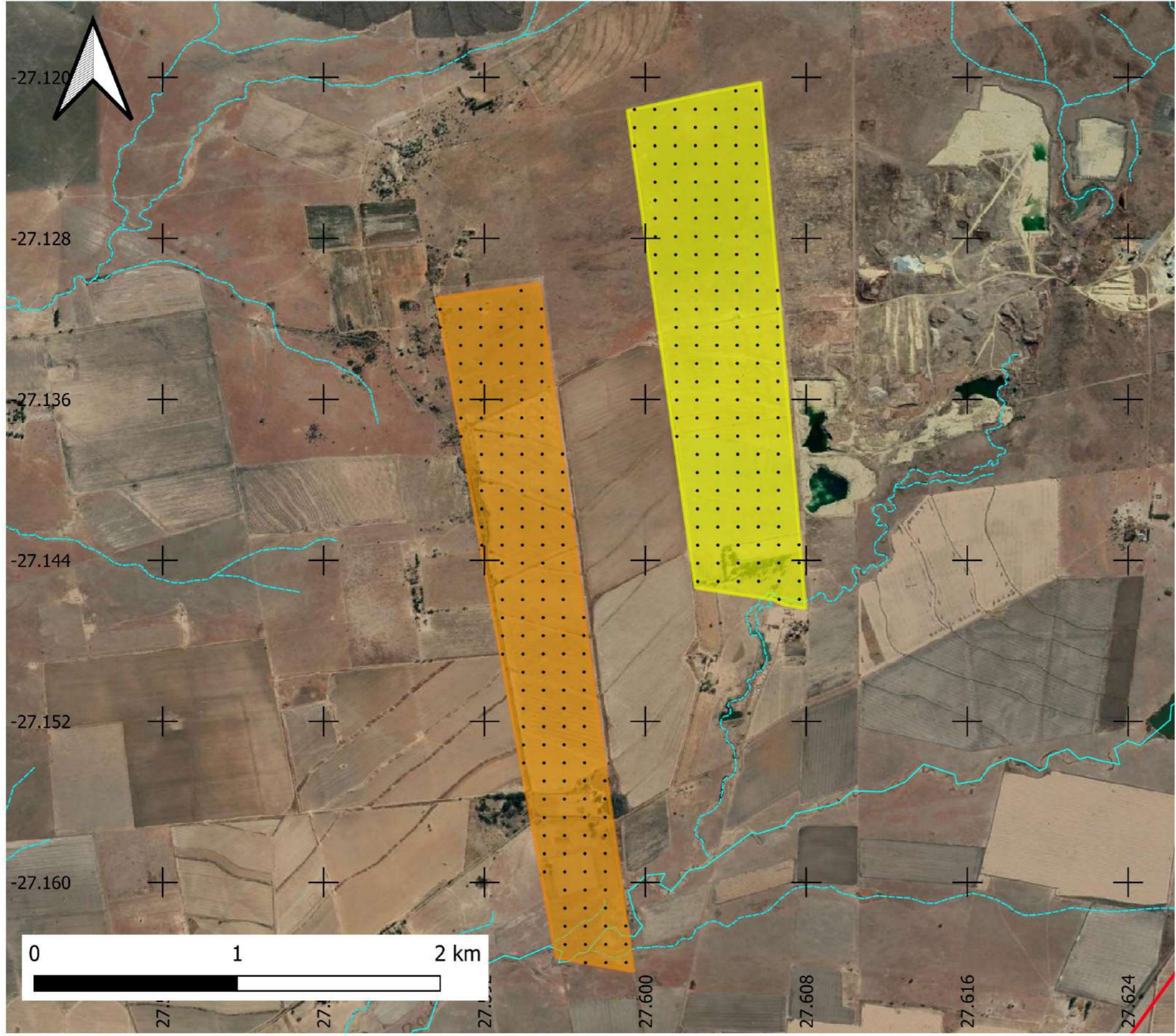
Local Setting

Legend

- Geluk 237
- Goudlaagte 238
- R82
- Rivers
- Non- perennials



info@cabangaenvironmental.co.za
 tel:011 794 7534



Matsopa Minerals (Pty) Ltd
 Goudlaagte & Geluk
 Prospecting Right
 Application

Preliminary Drilling
 Grid

- Legend**
- Geluk 237
 - Goudlaagte 238
 - R82
 - Drilling Grid
 - Klein- Rietspruit
 - Non- perennials



info@cabangaenvironmental.co.za
 tel:011 794 7534



MATSOPA MINERALS

Matsopa Minerals (Pty) Ltd
Koppies Bentonite Mine

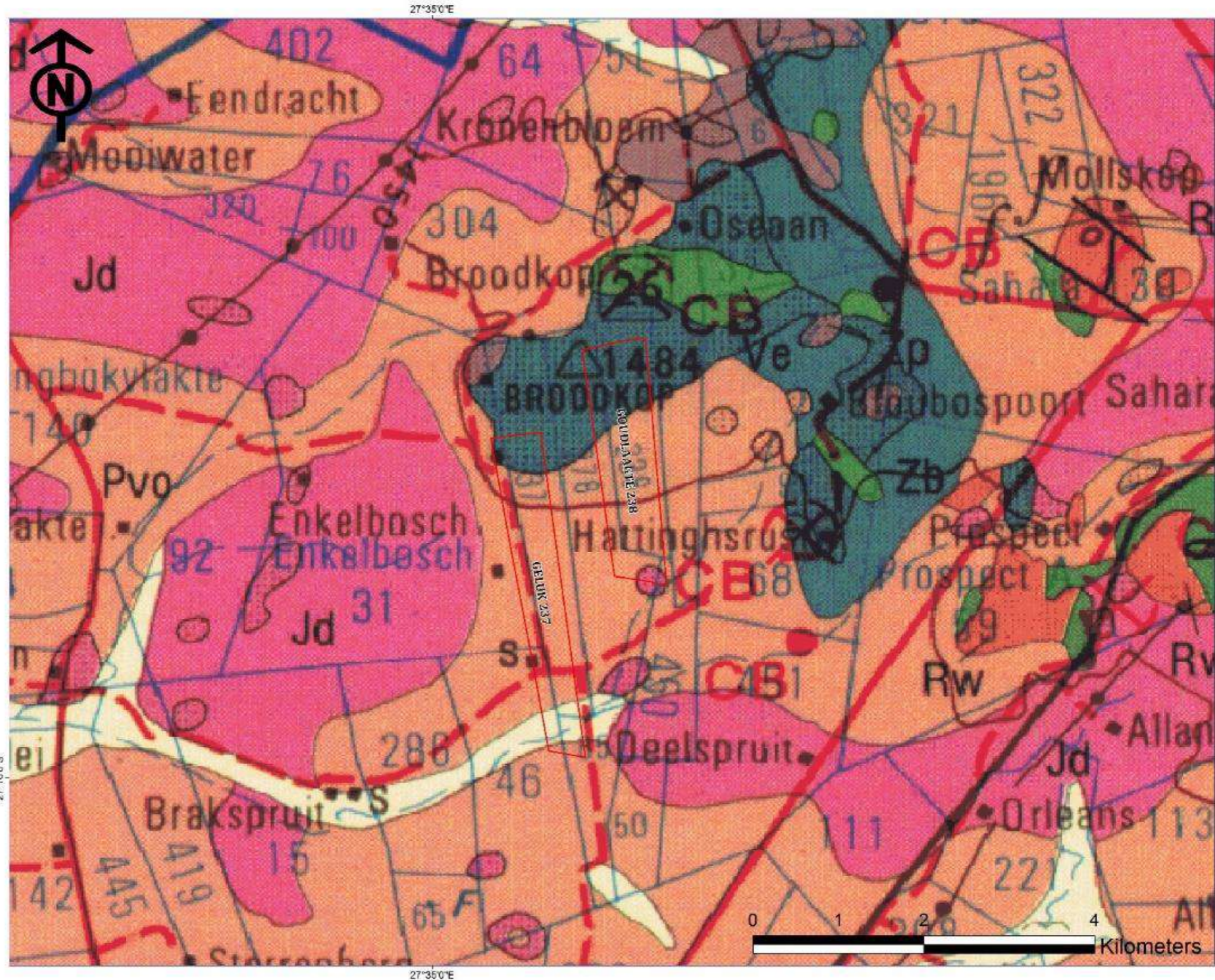
GEOLOGICAL MAP

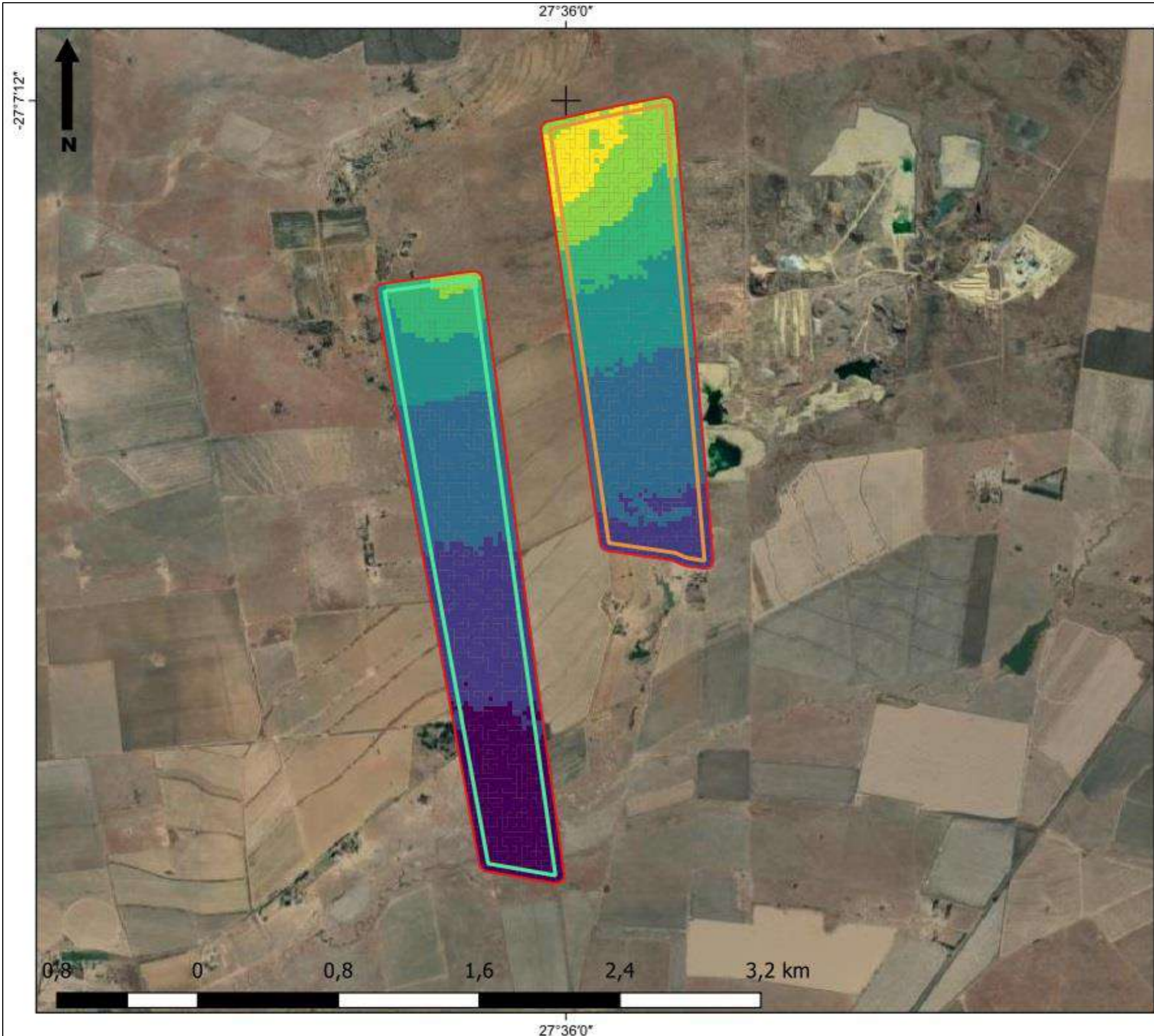
1:20 959

Legend

-  Prospecting Area
-  Alluvium
-  Qs: Aeolian sands
-  Jd: Dolerite
-  Pv: Sandstone, dark grey mudstone and shale, coal beds in places
-  Pvo: Dark grey mudstone and shale, subordinate siltstone.
-  Zb: Ultramafic gneisses
-  Zp: Ultramafic and mafic lavas, quartzite, conglomerate, and chlorite schists

Coordinate System: GCS WGS 1984
Datum: WGS 1984
Units: Degree





- Legend**
- 50 m Regulated Area
 - Project Area**
 - Geluk237
 - Goudlaagte PRA
 - DEM (MASL)**
 - 1420 - 1430
 - 1430 - 1440
 - 1440 - 1450
 - 1450 - 1460
 - 1460 - 1470
 - 1470 - 1480
 - 1480 - 1490

1:22 055,906766



the
BIODIVERSITY
company

Matsopa Minerals (Pty) Ltd
Goudlaagte & Geluk
Prospecting Right
Application

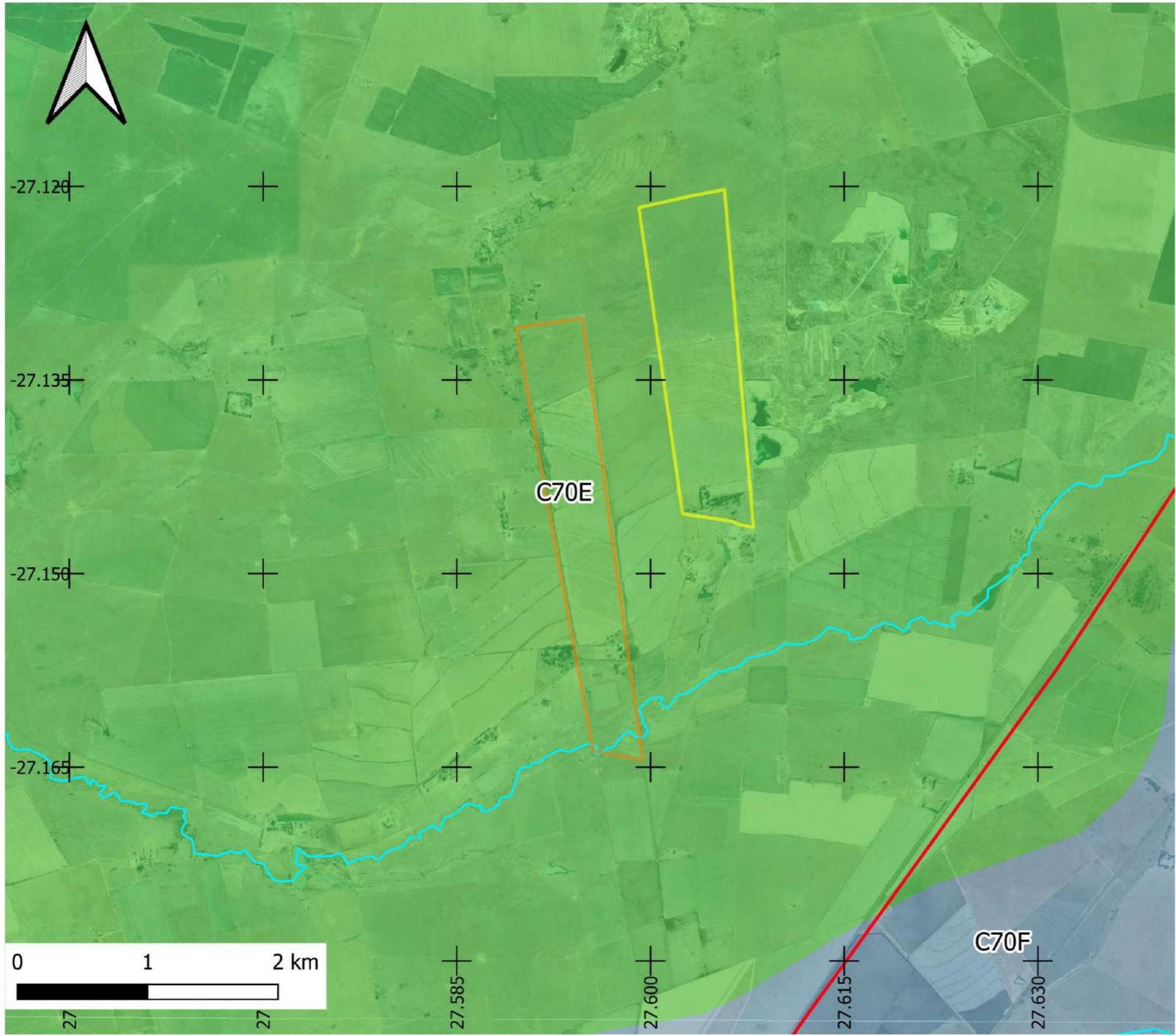
Quaternary
Catchments

Legend

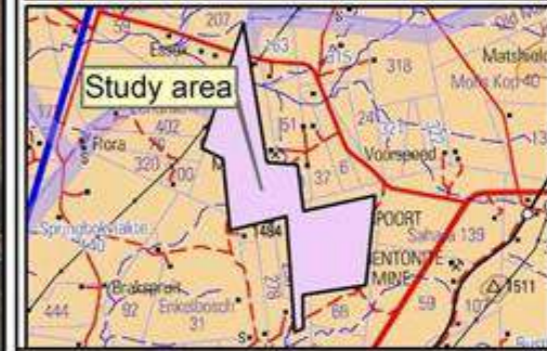
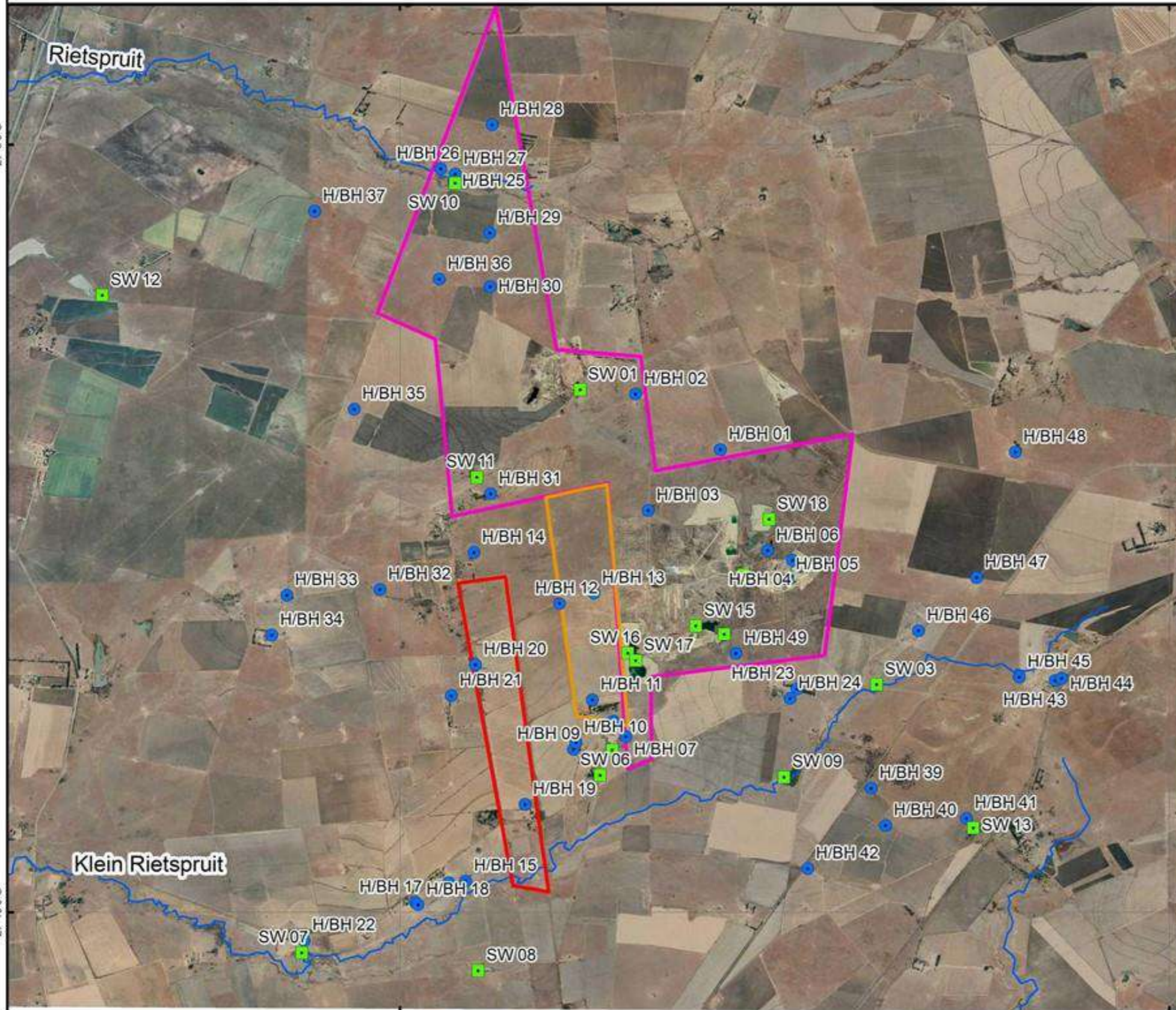
- Geluk 237
- Goudlaagte 238
- Klein- Rietspruit
- R82



info@cabangaenvironmental.co.za
tel:011 794 7534

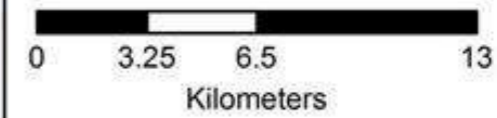


Koppies Bentonite Mine Hydrocensus



Legend

- Surface water
- Groundwater
- Rivers

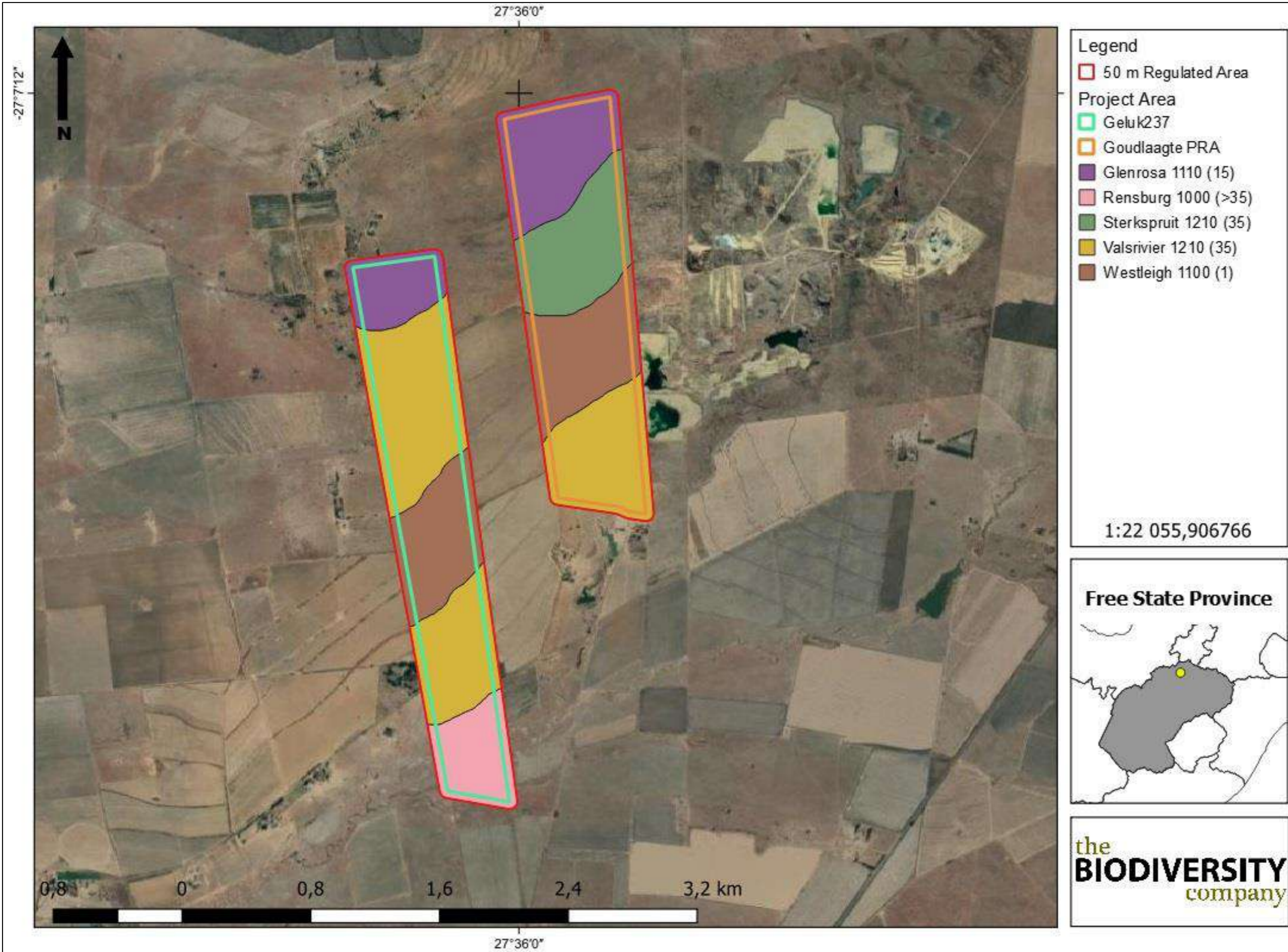


27°35'0"E

27°40'0"E

27°50'S

27°10'S





Legend

- 50 m Regulated Area
- Project Area**
- Geluk237
- Goudlaagte PRA
- Land Capability Sensitivity (DAFF 2017)**
- LC 6-8 (Low/Moderate to Moderate)
- Crop Boundary Sensitivities**
- High

1:22 055,906766



the
BIODIVERSITY
company

Matsopa Minerals (Pty) Ltd
Goudlaagte & Geluk
Prospecting Right
Application

Landcover (SANBI)

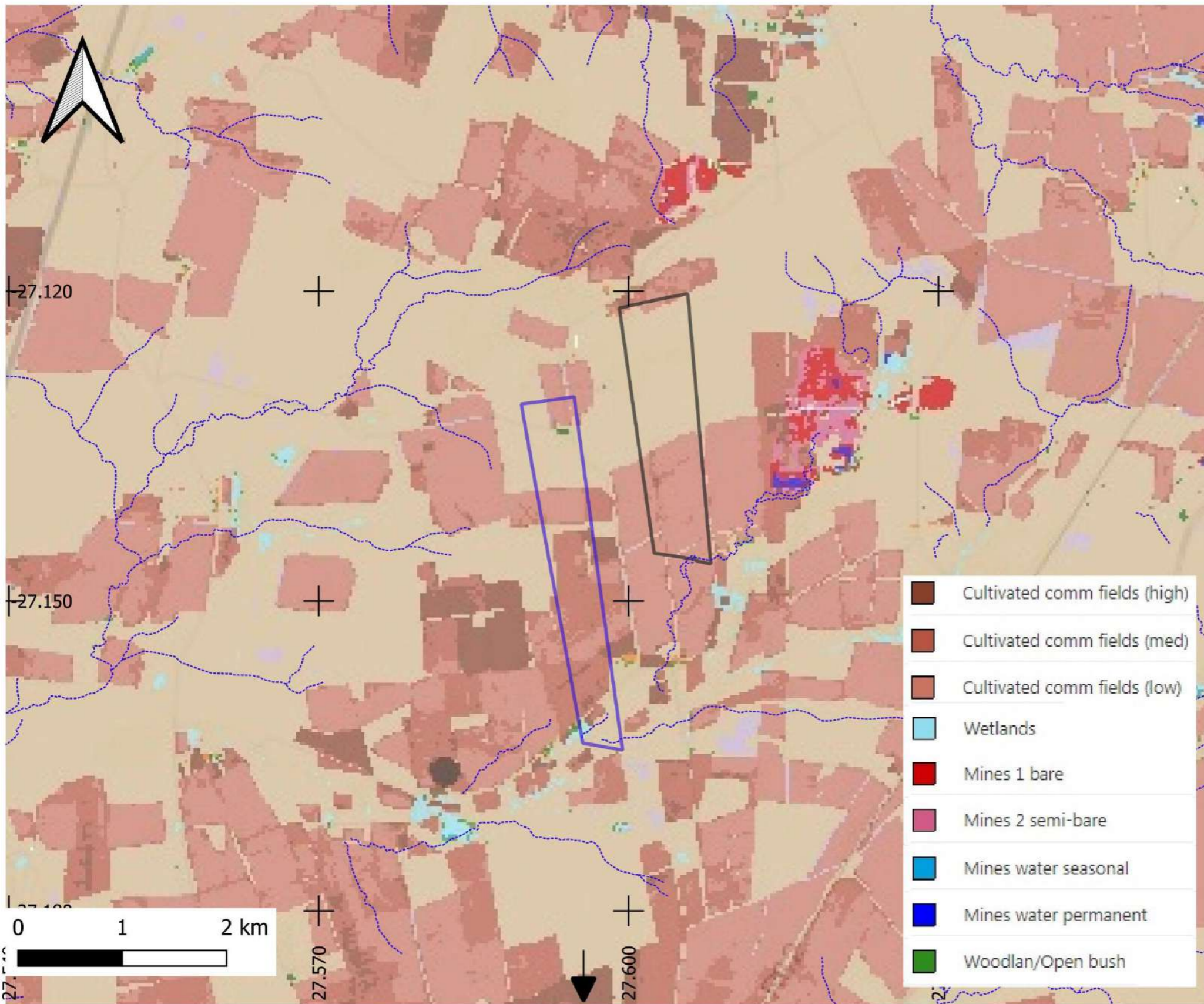
Legend

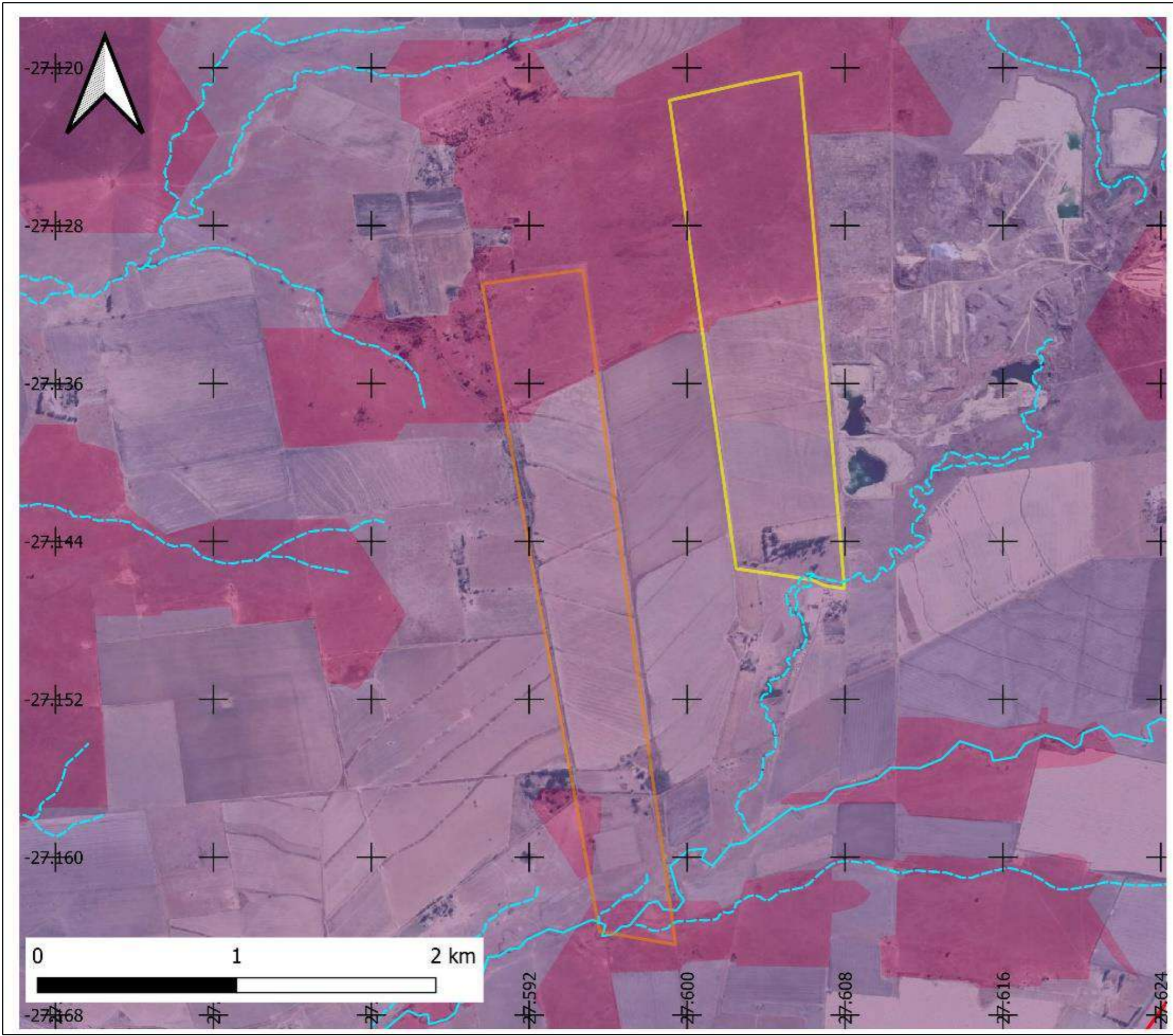
- Geluk 237
- Goudlaagte 238
- R82
- Klein- Rietspruit
- Non- perennials

- Cultivated comm fields (high)
- Cultivated comm fields (med)
- Cultivated comm fields (low)
- Wetlands
- Mines 1 bare
- Mines 2 semi-bare
- Mines water seasonal
- Mines water permanent
- Woodlan/Open bush



info@cabangaenvironmental.co.za
tel:011 794 7534





Matsopa Minerals (Pty) Ltd
 Goudlaagte & Geluk
 Prospecting Right
 Application

Critical Biodiversity
 Areas

Legend

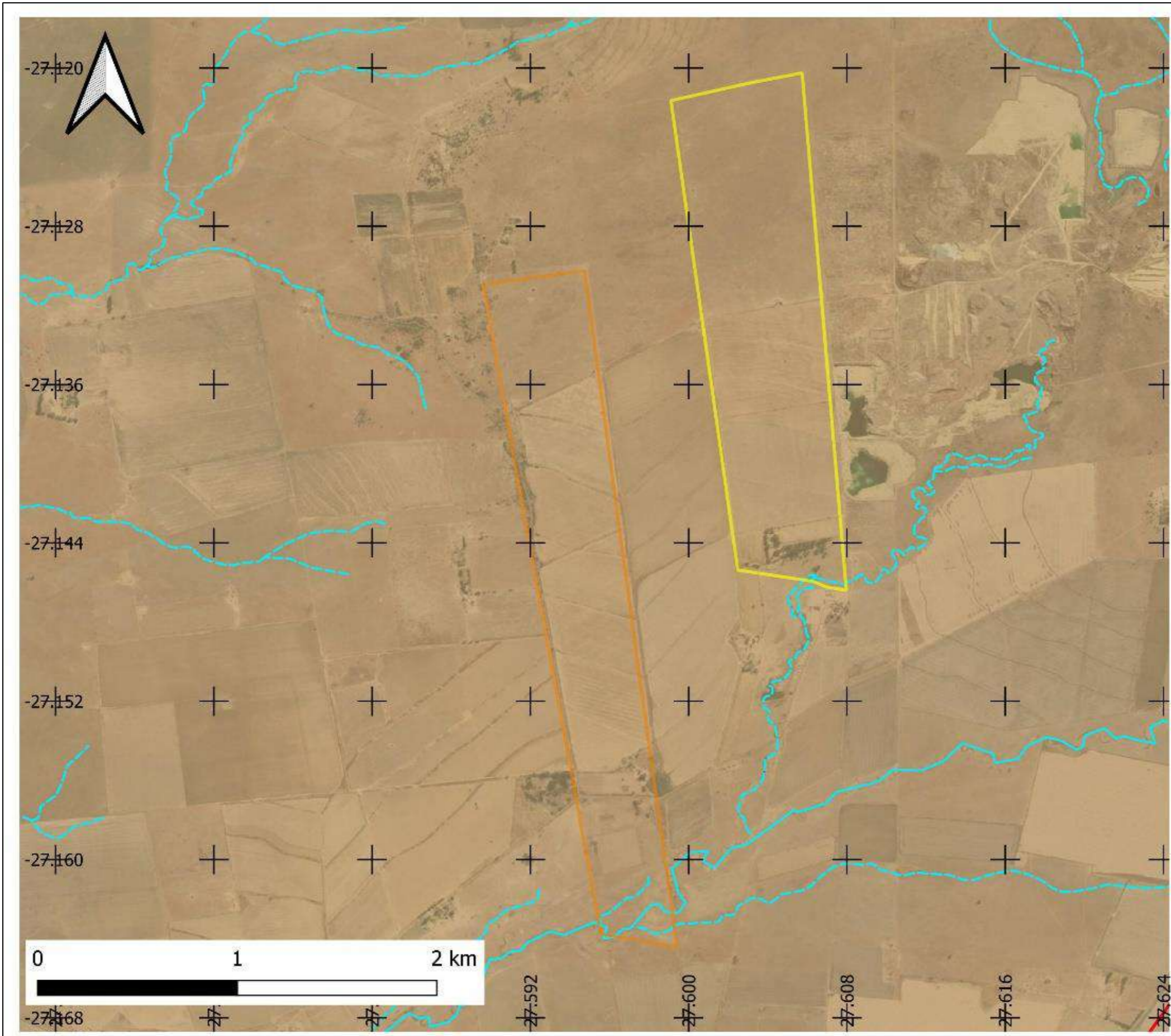
- Geluk 237
- Goudlaagte 238
- R82
- Klein- Rietspruit
- Non- perennials

Critical Biodiversity Areas

- ESA1
- ESA2



info@cabangaenvironmental.co.za
 tel:011 794 7534



Matsopa Minerals (Pty) Ltd
 Goudlaagte & Geluk
 Prospecting Right
 Application

Vegetation

Legend

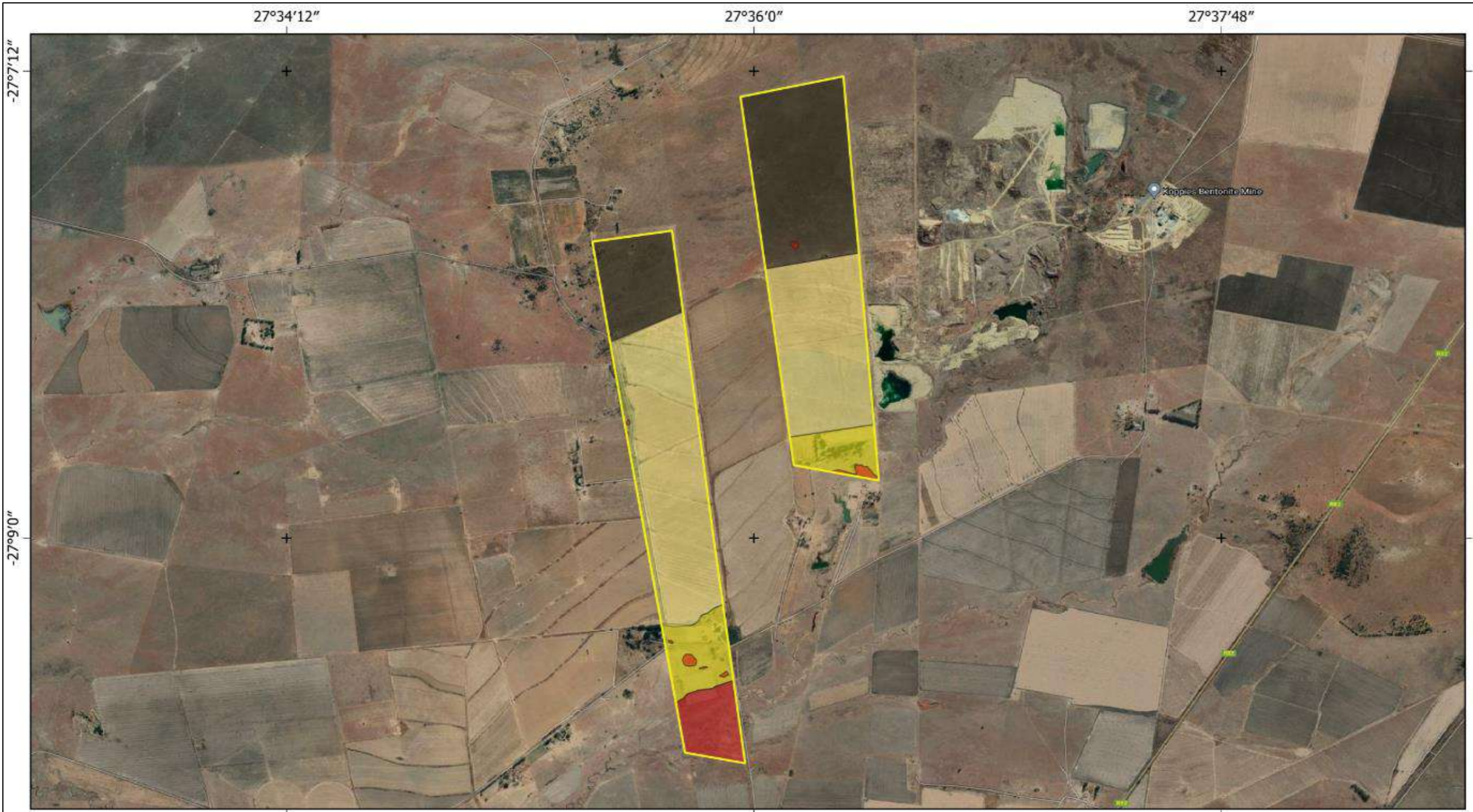
- Geluk 237
- Goudlaagte 238
- R82
- Klein- Rietspruit
- Non- perennials

Vegetation

- Central Free State Grassland



info@cabangaenvironmental.co.za
 tel:011 794 7534



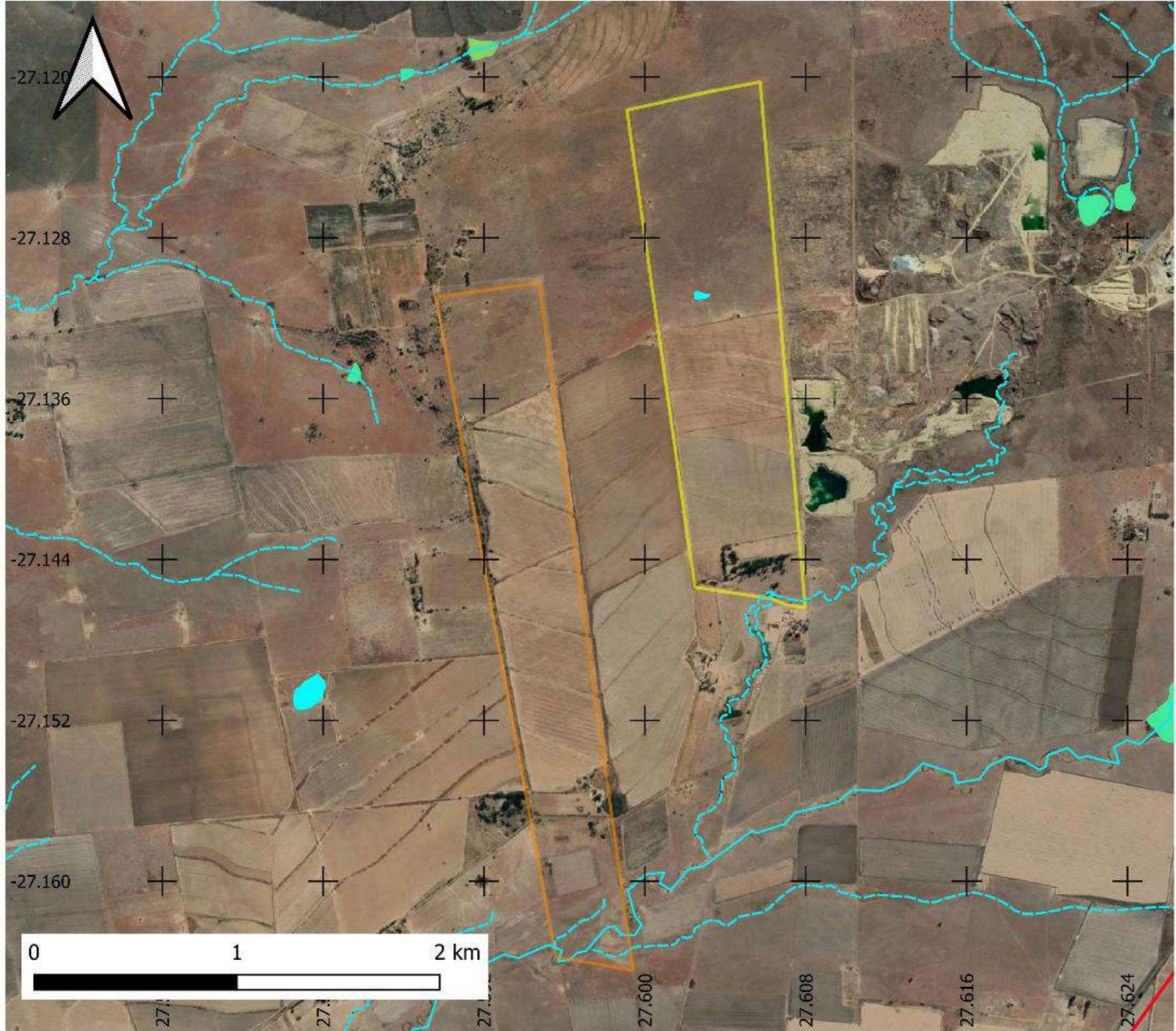
Project: Matsopa PRA Terrestrial
 Compliance Statement
 Date: 14/01/2022
 Compiler: M Schrenk
 Datum: WGS 84 UTM 35S

Legend

Project Area	Habitat SEI Delineation
Wetland - High SEI	Grassland - Very High SEI
Degraded Grassland - Low SEI	Transformed - Very Low SEI

0 500 1 000 m





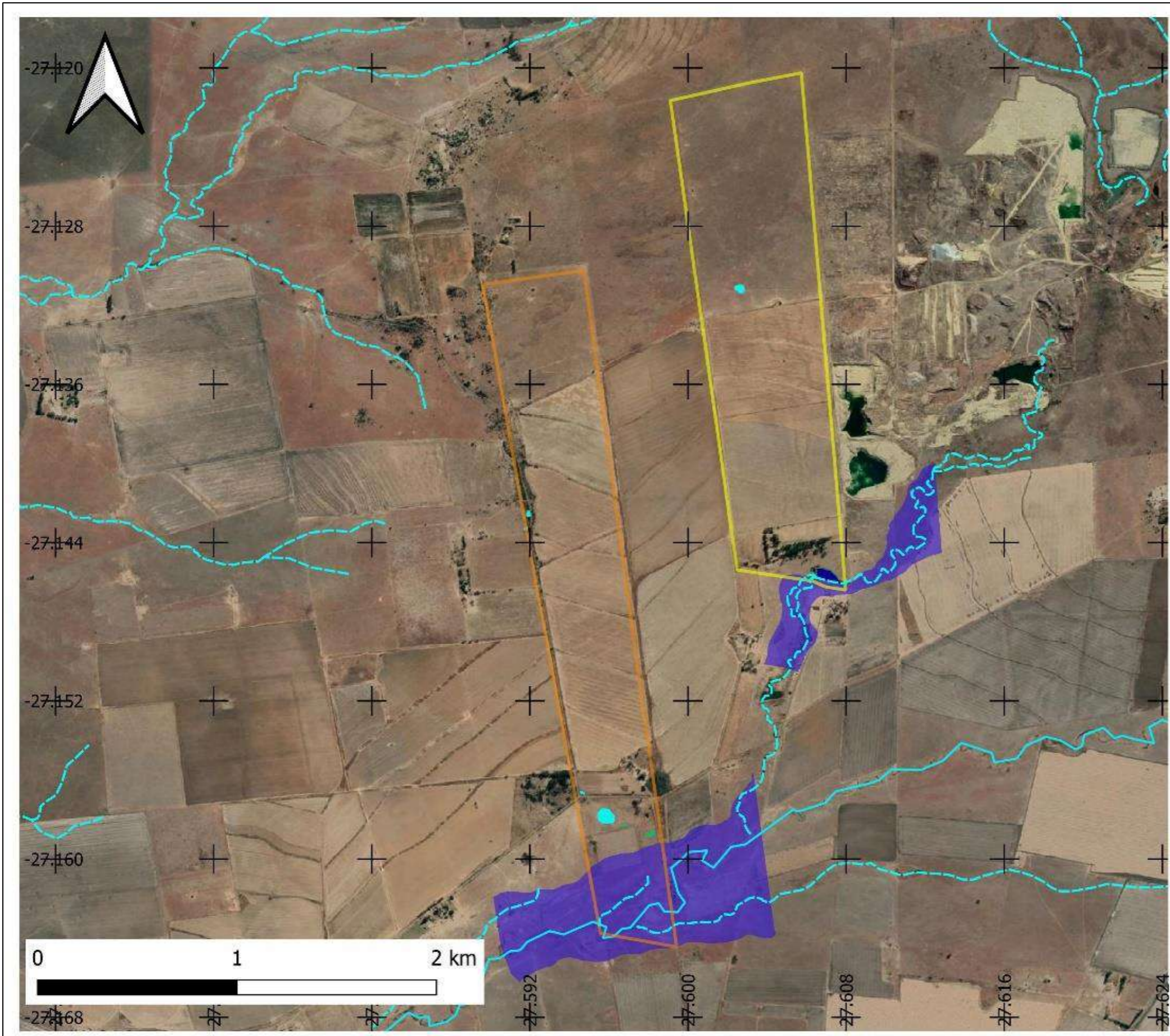
Matsopa Minerals (Pty) Ltd
 Goudlaagte & Geluk
 Prospecting Right
 Application

NFEPA Rivers &
 NFEPA Wetlands

- Legend**
- Geluk 237
 - Goudlaagte 238
 - Klein-Rietspruit
 - Non- perennials
 - R82
- NFEPA Wetlands**
- Depression
 - Flat
 - Seep



info@cabangaenvironmental.co.za
 tel:011 794 7534



Matsopa Minerals (Pty) Ltd
 Goudlaagte & Geluk
 Prospecting Right
 Application

Delineated Wetlands

Legend

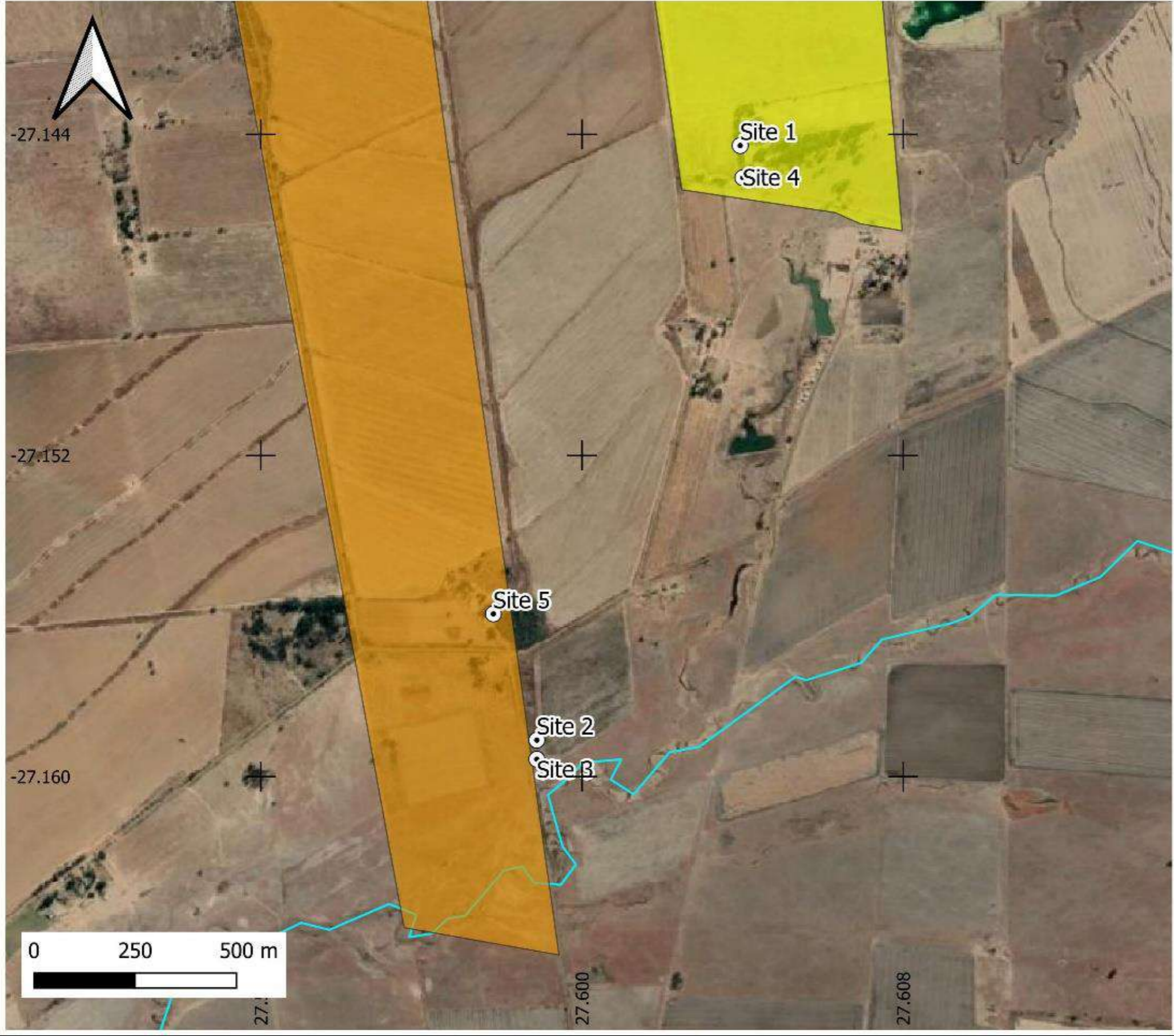
- Geluk 237
- Goudlaagte 238
- Klein- Rietspruit
- Non- perennials

Delineated Wetlands

- Dam
- Depression
- Floodplain
- Seep



info@cabangaenvironmental.co.za
 tel:011 794 7534



Matsopa Minerals (Pty) Ltd
 Goudlaagte & Geluk
 Prospecting Right
 Application

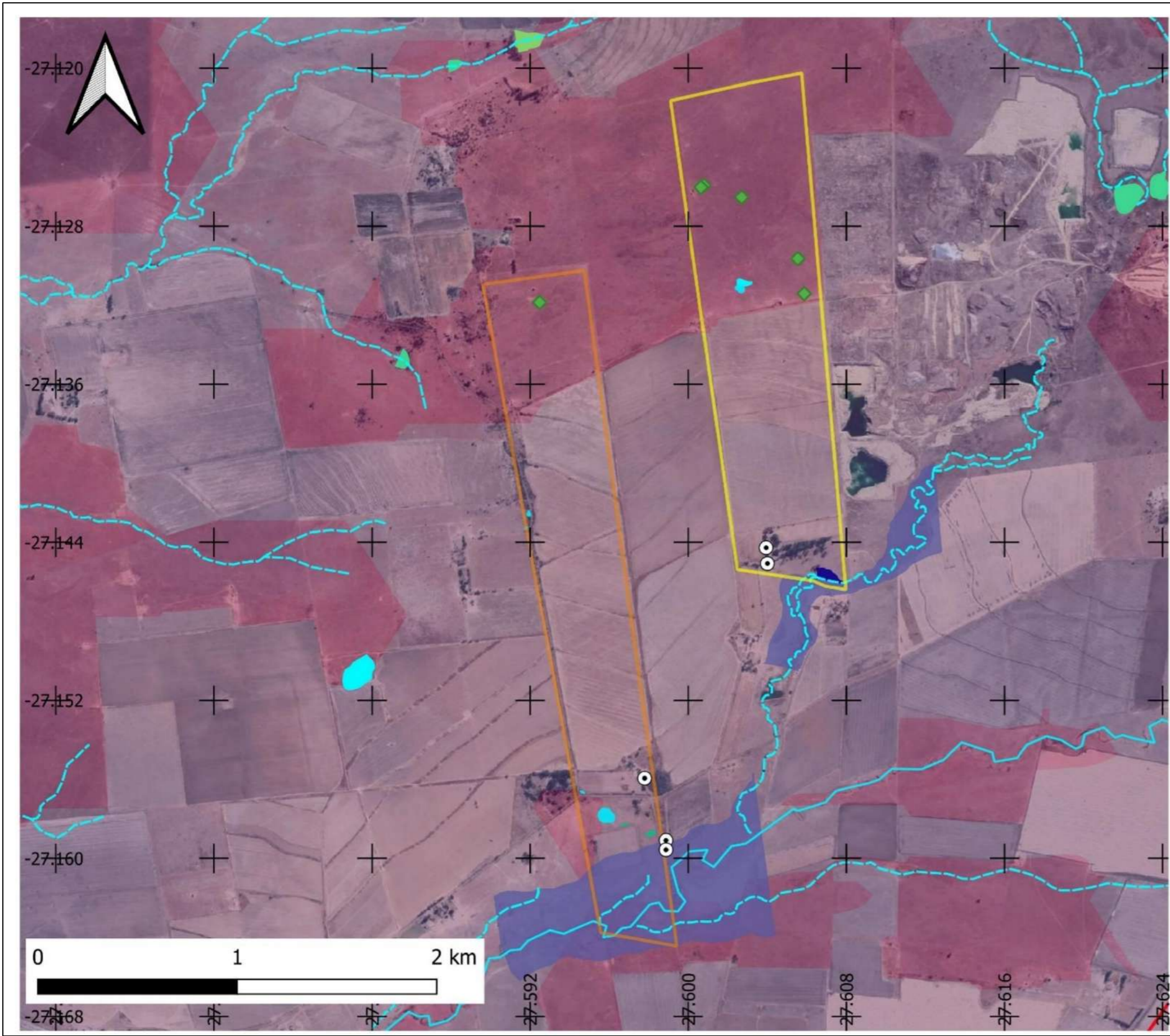
Cultural & Heritage
 Sites

Legend

- Geluk 237
- Goudlaagte 238
- Klein- Rietspruit
- Heritage Sites



info@cabangaenvironmental.co.za
 tel:011 794 7534



Matsopa Minerals (Pty) Ltd
 Goudlaagte & Geluk
 Prospecting Right
 Application

- Sensitivity Plan**
- Geluk 237
 - Goudlaagte 238
 - R82
 - Klein- Rietspruit
 - Non- perennials
 - Heritage Sites
 - Observed Boophone disticha
- NFEPA Wetlands**
- Depression
 - Flat
 - Seep
- Delineated Wetlands**
- Dam
 - Depression
 - Floodplain
 - Seep
- Critical Biodiversity Areas**
- ESA1
 - ESA2



Matsopa Minerals (Pty) Ltd
 Goudlaagte & Geluk
 Prospecting Right
 Application

Sensitivity Plan

- Geluk 237
- Goudlaagte 238
- Klein- Rietspruit
- Non- perennials
- Heritage Sites
- ◆ Observed Boophone disticha

NFEPA Wetlands

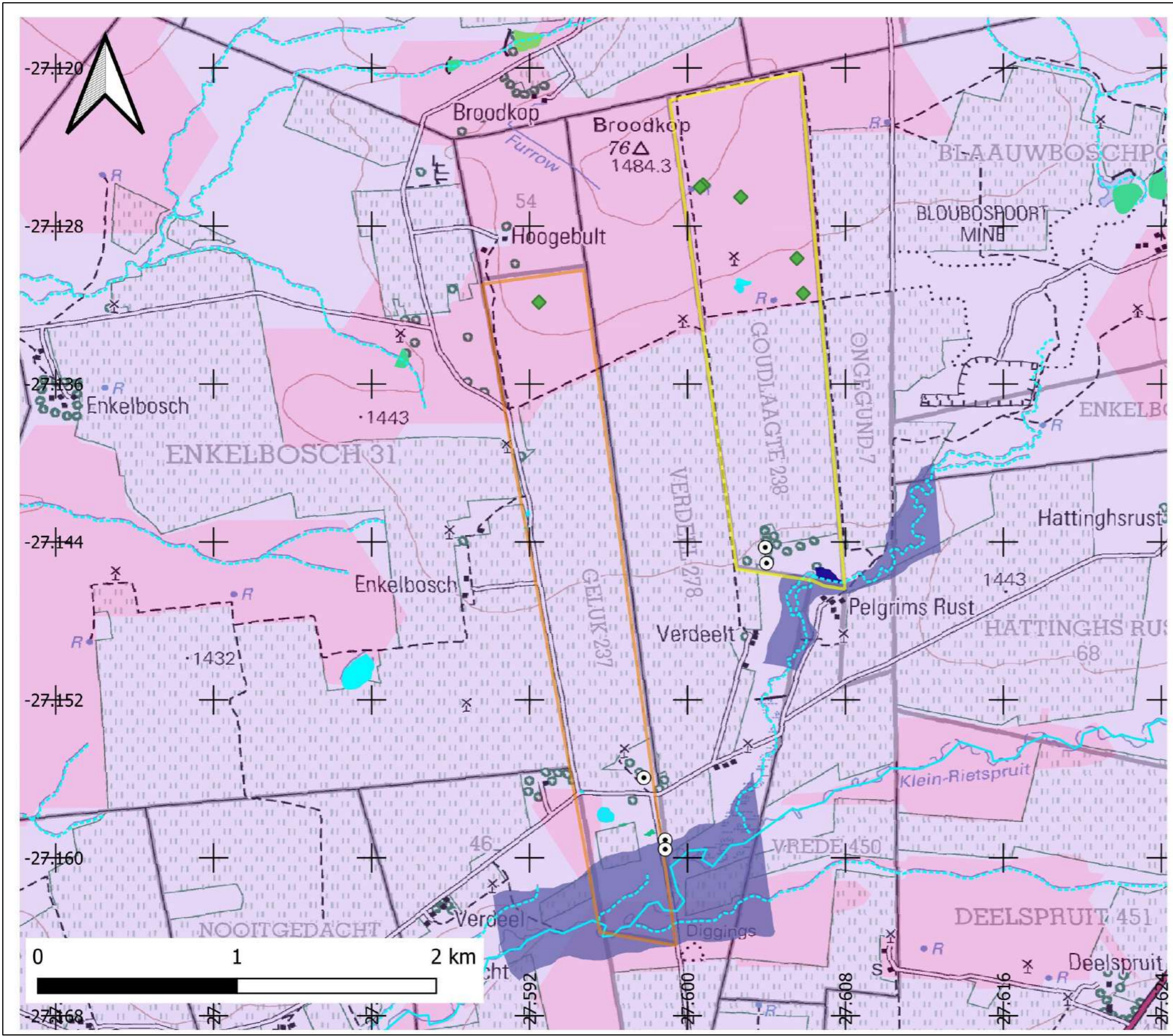
- Depression
- Flat
- Seep

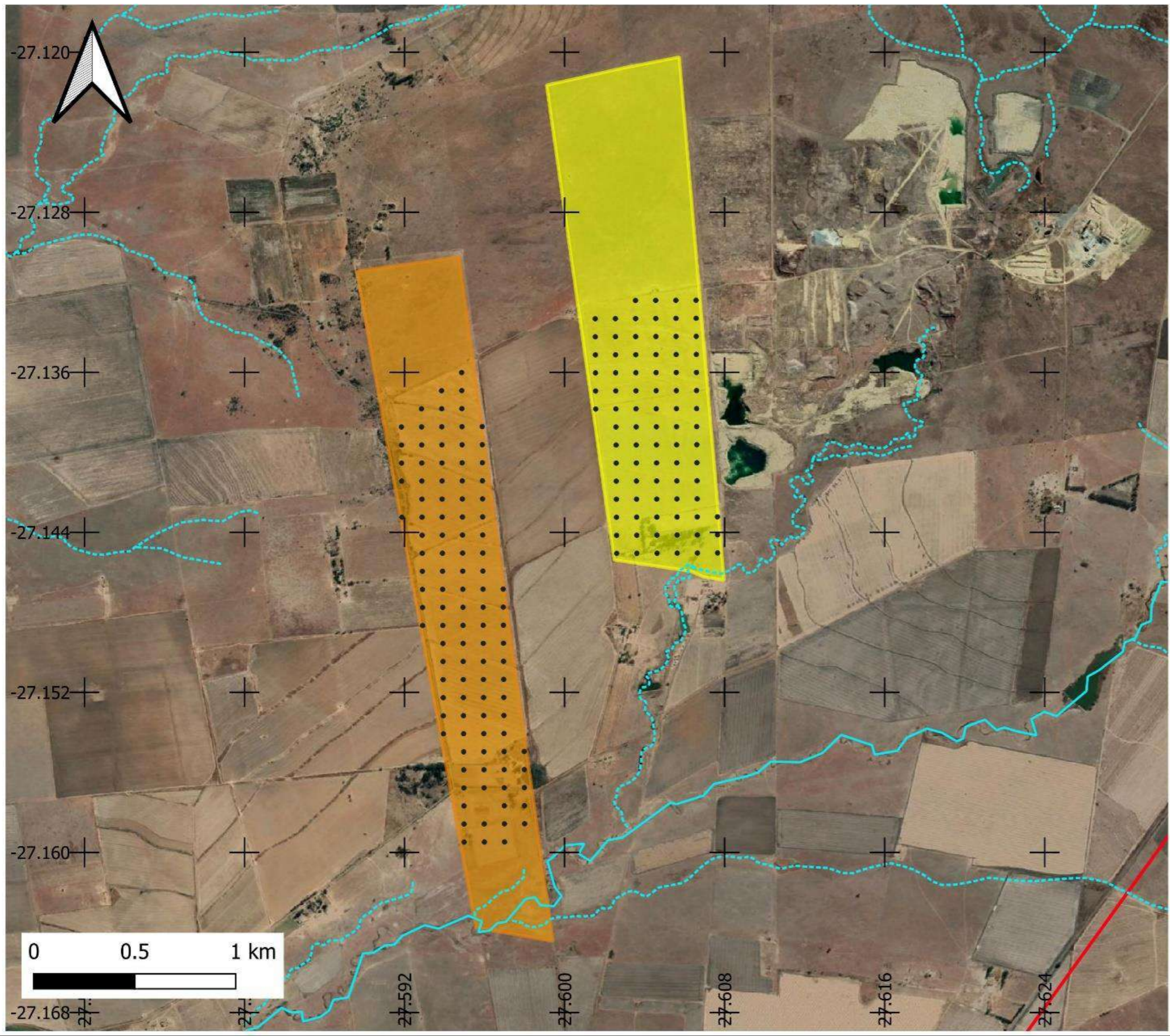
Delineated Wetlands

- Dam
- Depression
- Floodplain
- Seep

Critical Biodiversity Areas

- ESA1
- ESA2





Matsopa Minerals (Pty) Ltd
 Goudlaagte & Geluk
 Prospecting Right
 Application

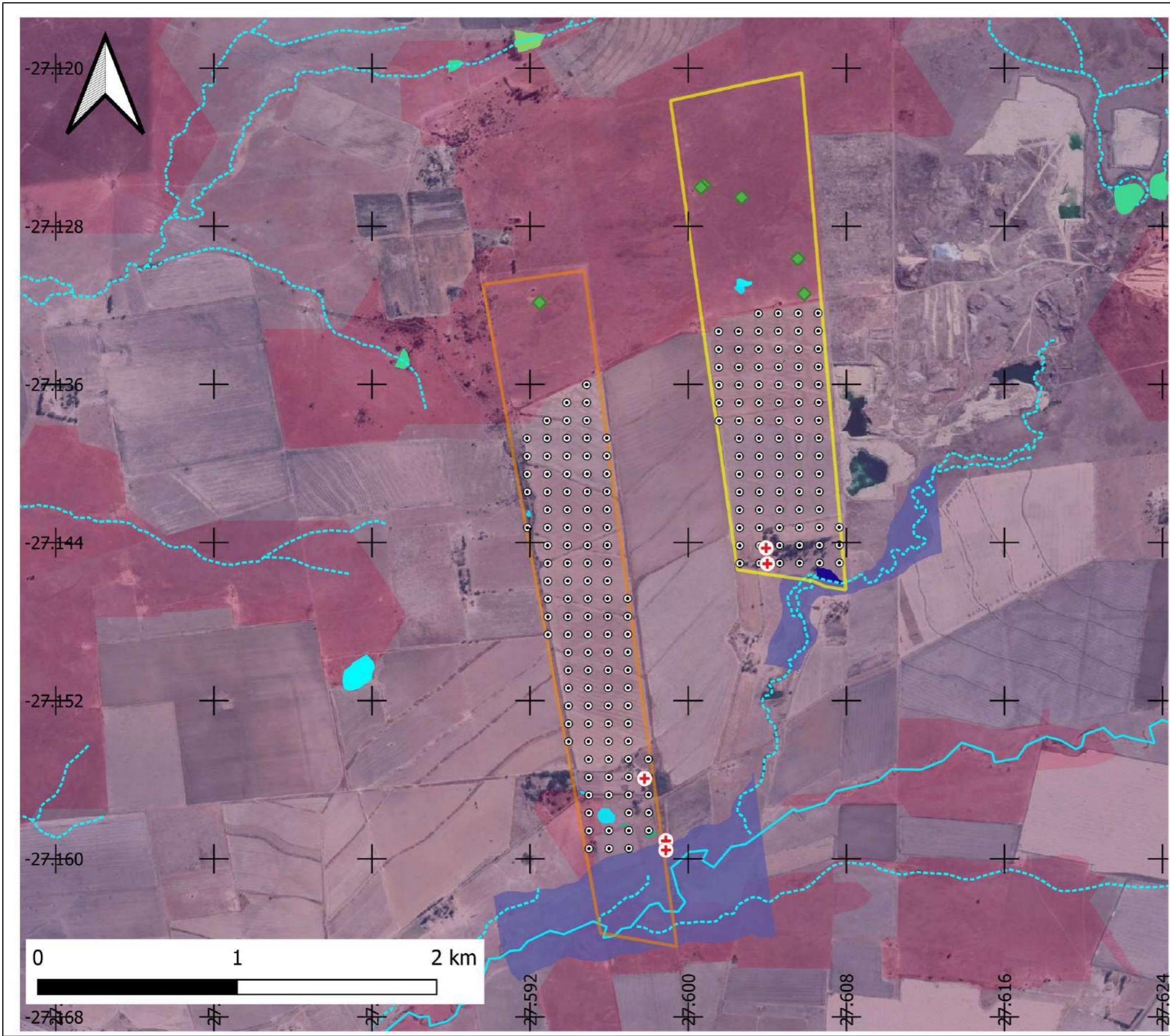
Final Drilling Grid

Legend

- Geluk 237
- Goudlaagte 238
- Klein- Rietspruit
- Non- perennials
- R82
- Final Drilling Grid



info@cabangaenvironmental.co.za
 tel:011 794 7534



Matsopa Minerals (Pty) Ltd
 Goudlaagte & Geluk
 Prospecting Right
 Application

- Sensitivity Plan**
- Geluk 237
 - Goudlaagte 238
 - Final Drilling Grid
 - Klein- Rietspruit
 - Non- perennials
 - + Heritage Sites
 - ◆ Observed Boophone disticha
- NFEPA Wetlands**
- Depression
 - Flat
 - Seep
- Delineated Wetlands**
- Dam
 - Depression
 - Floodplain
 - Seep
- Critical Biodiversity Areas**
- ESA1
 - ESA2



Matsopa Minerals (Pty) Ltd
 Goudlaagte & Geluk
 Prospecting Right
 Application

- ### Sensitivity Plan
- Geluk 237
 - Goudlaagte 238
 - Final Drilling Grid
 - Klein- Rietspruit
 - Non- perennials
 - + Heritage Sites
 - ◆ Observed Boophone disticha
- #### NFEPA Wetlands
- Depression
 - Flat
 - Seep
- #### Delineated Wetlands
- Dam
 - Depression
 - Floodplain
 - Seep
- #### Critical Biodiversity Areas
- ESA1
 - ESA2

