



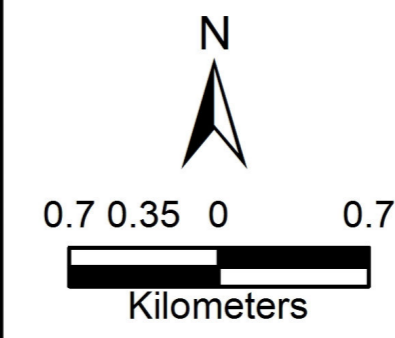
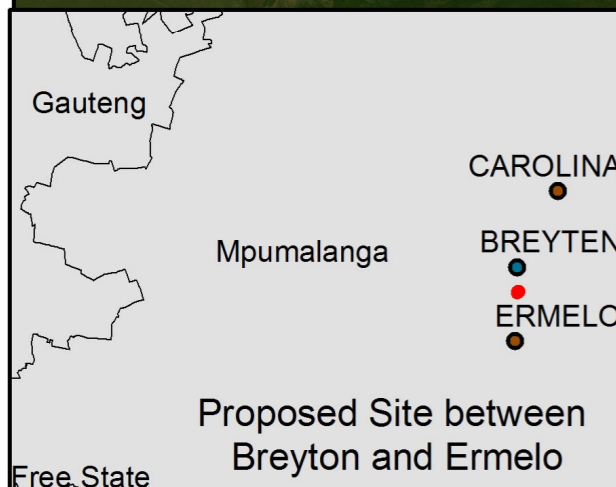
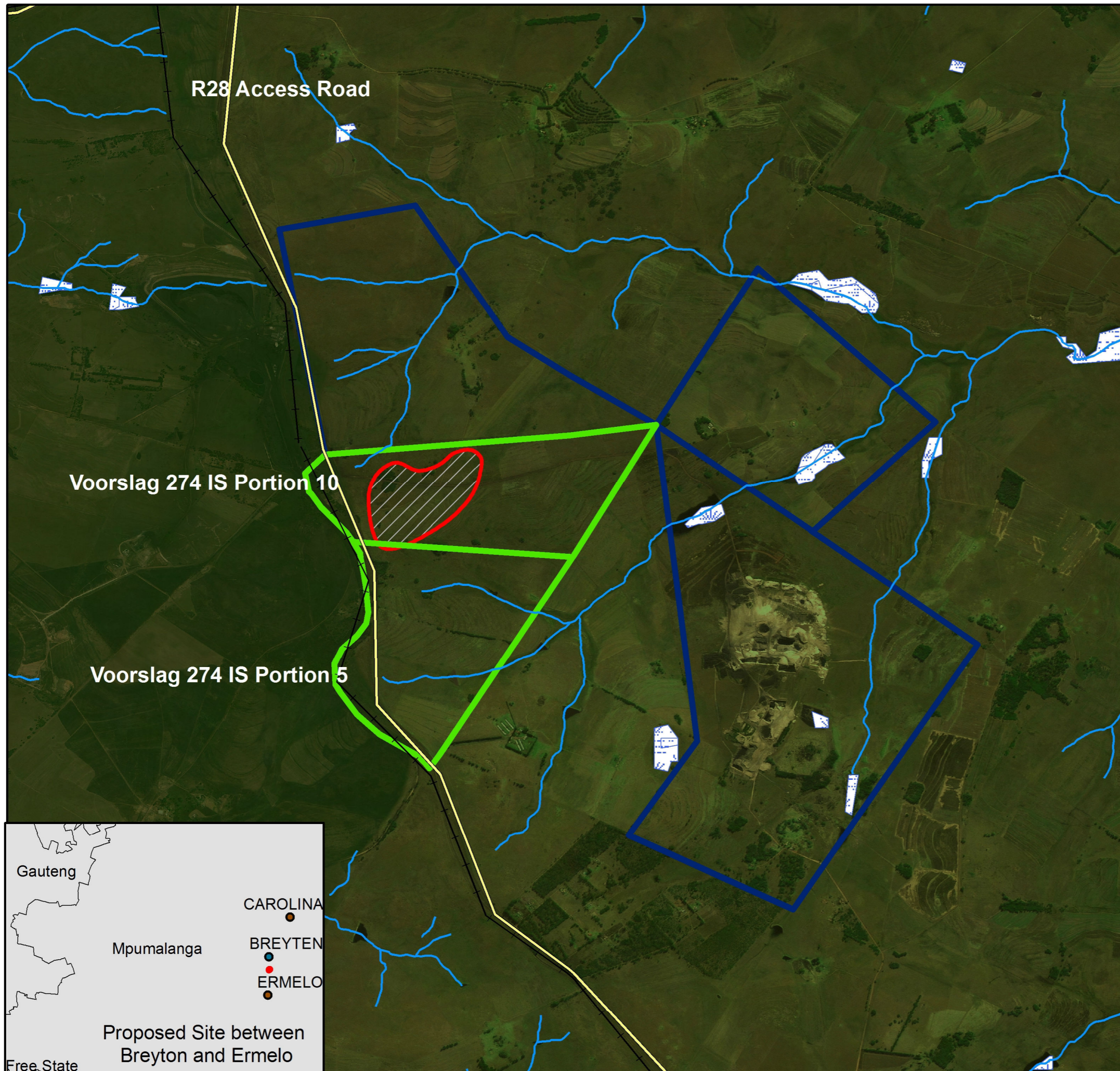


SOUTH AFRICAN COAL MINE HOLDINGS (Pty) Ltd Umlabu Colliery New Plant and Tailings Storage Facility

Mpumalanga
Hydrological Map

Legend

-  Roads
-  Rivers
-  Railway
-  Wetlands
-  Proposed Areas for New CHPP and Tailings Facility
-  New Plant Area
-  Umlabu Colliery Property



"COPYRIGHT IS VESTED IN ENVASS IN TERMS OF THE COPYRIGHT ACT (ACT 98 OF 1978) AND NO USE OR REPRODUCTION OR DUPLICATION THEREOF MAY OCCUR WITHOUT THE WRITTEN CONSENT OF THE AUTHOR"

AUTHOR: CSS
DATE: 13/07/2013

"Your Partner in Calculating Environmental Solutions"

ENVASS 

ENVIRONMENTAL ASSURANCE (Pty)Ltd

www.envass.co.za, Tell: 012 460 9768
394 Tram Street Brooklyn, Pretoria, South Africa