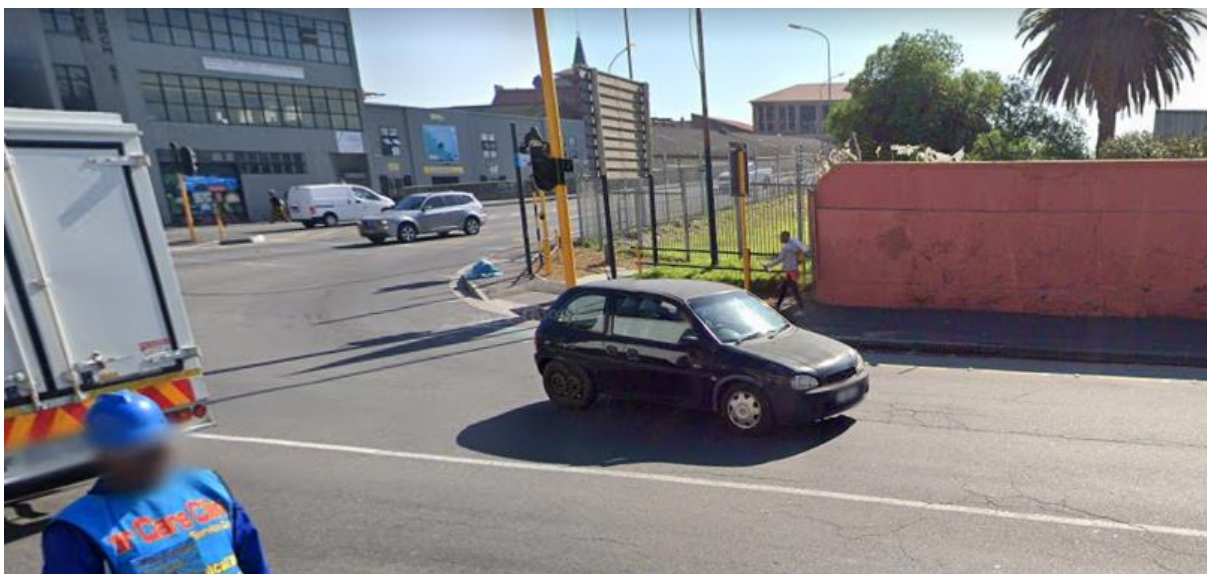


**Annexure 6.1. Annotated photographs street views and context.**



**Fig 1 Albert Road Woodstock looking west. The Woodstock cemetery is on the left (arrowed).**



**Fig 2. Corner of Lower Church Streets and Albert Road with the cemetery of the right. The fenced area is not part of the cemetery property.**



**Fig 3. Cemetery wall at the corner of Albert Road and Lower Church Street.**



**Fig 4. Albert Road looking west towards Cape Town. The cemetery would be on the right of the photograph.**



Fig 5. View of cemetery from the Lower Church Street Bridge. This shows the collapsed northern wall (arrowed)



Fig 6. View of the back of the cemetery in the *cul de sac* showing the collapsed north wall.



**Fig 7. View of the cemetery from the Lower Church Street Bridge showing the western perimeter wall**