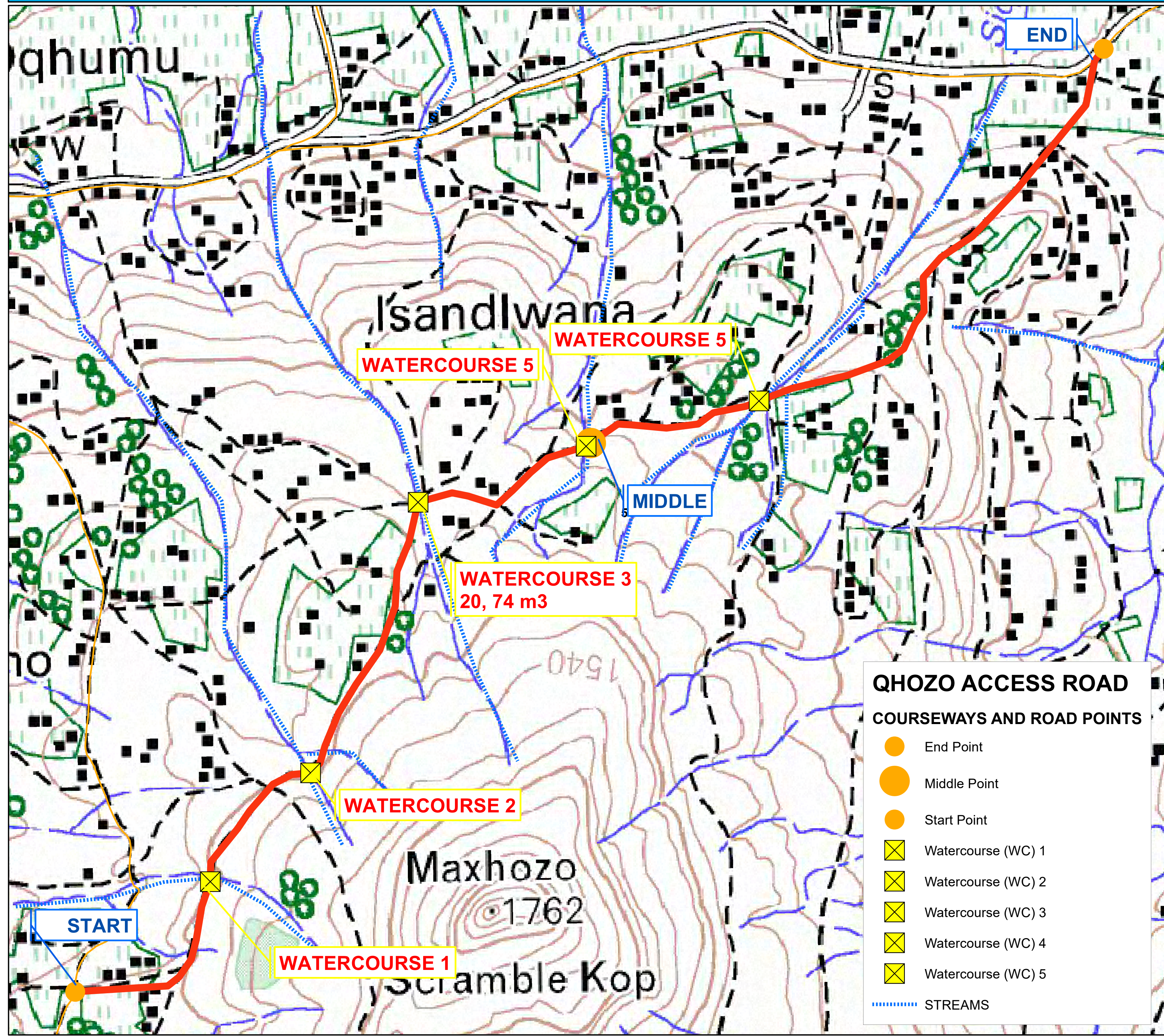


QHOZO ACCESS ROAD LAYOUT MAP




19 Valley Road
Margate
4275

Tell No. 039 315 0437
Cell No. 083 408 5737
wnogobela@isolendalo.co.za

LEGEND

- ACCESS ROAD
- DOT ROADS
- ⋯ STREAMS
- LOCAL WARDS

Services By:

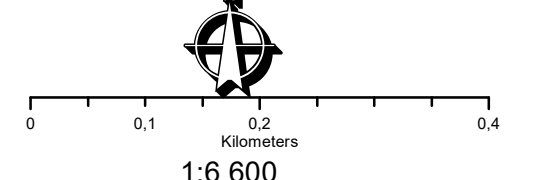


Mokolo Geomatics
GIS and Applied Remote Sensing

Lot 2237, 3 Te Water Street
Margate 4275
Contact No. 074 518 9371
Email : mokologeomatics@gmail.com
Main Office Spatial Location
South: 29° 53' 59"
East: 29° 44' 42"

QHOZO ACCESS ROAD COURSEWAYS AND ROAD POINTS

- End Point
- Middle Point
- Start Point
- ⊠ Watercourse (WC) 1
- ⊠ Watercourse (WC) 2
- ⊠ Watercourse (WC) 3
- ⊠ Watercourse (WC) 4
- ⊠ Watercourse (WC) 5
- ⋯ STREAMS



0 0.1 0.2 0.4
Kilometers
1:6 600

Data Source :
Cadastral - Surveyor General
Municipalities - Demarcation Board
Local Wards - Demarcation Board
Placenames - Demarcation Board
Other Data - Digitised

LO 31 Hertbeesthoek 94
Date: 2018-10-29
Layout Map : Qhoza Access Road
Ref No. MGmj - 20181029 - 005

Disclaimer:
This plan was compiled by Mokolo Geomatics (PTY)LTD with an intent to geographically locate a area of interest in visual manner. The data used to compile this plan has been acquired from various government institutes. Permission has been obtained to use this data for such purpose. This data may not be current, and it should be for information only.