

# Locality Map

## Mopane Solar Park

North West & Gauteng Province

### Municipal Data

- Provincial Boundaries
- Major Towns & Cities

### Site Specific Data

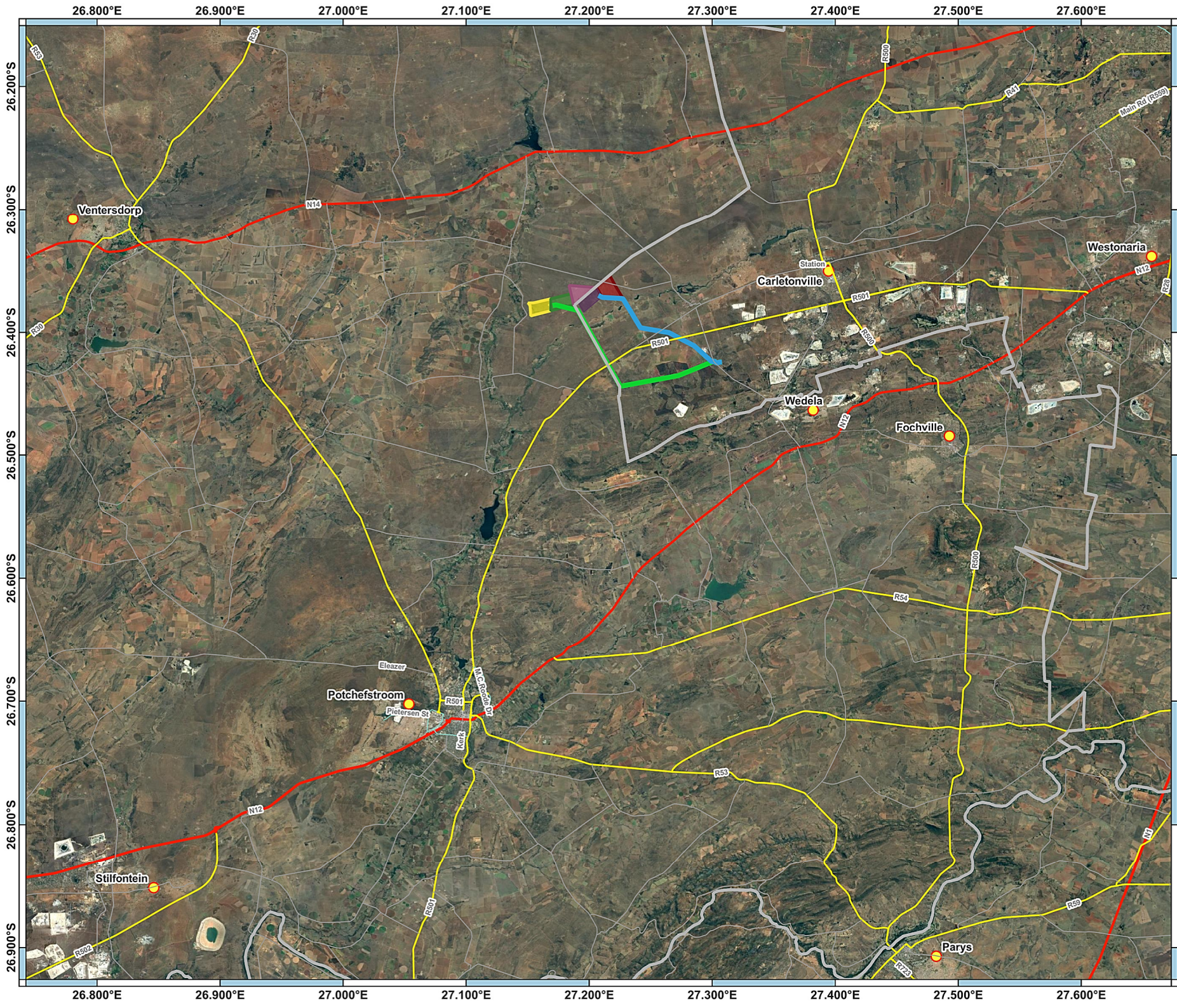
- Servitude\_Power Lines
- Alternative 1
- Preferred Route

### Mopane PV Solar Park

- Mopane Solar PV 1
- Mopane Solar PV 2
- Mopane Solar PV 3
- Mopane Solar PV 4
- Mopane Solar PV 5




 AGES Limpopo (Pty) Ltd  
 120 Marshall Street  
 Polokwane, 0699  
 +27 15 291 1577  
 Map Composed by:  
 D. van der Walt  
 Projection: WGS 84  
 2023-01-20



# Locality Map

## Mopane Solar Park

North West & Gauteng Province

### Municipal Data

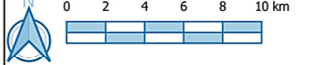
- Provincial Boundaries
- Major Towns & Cities

### Site Specific Data

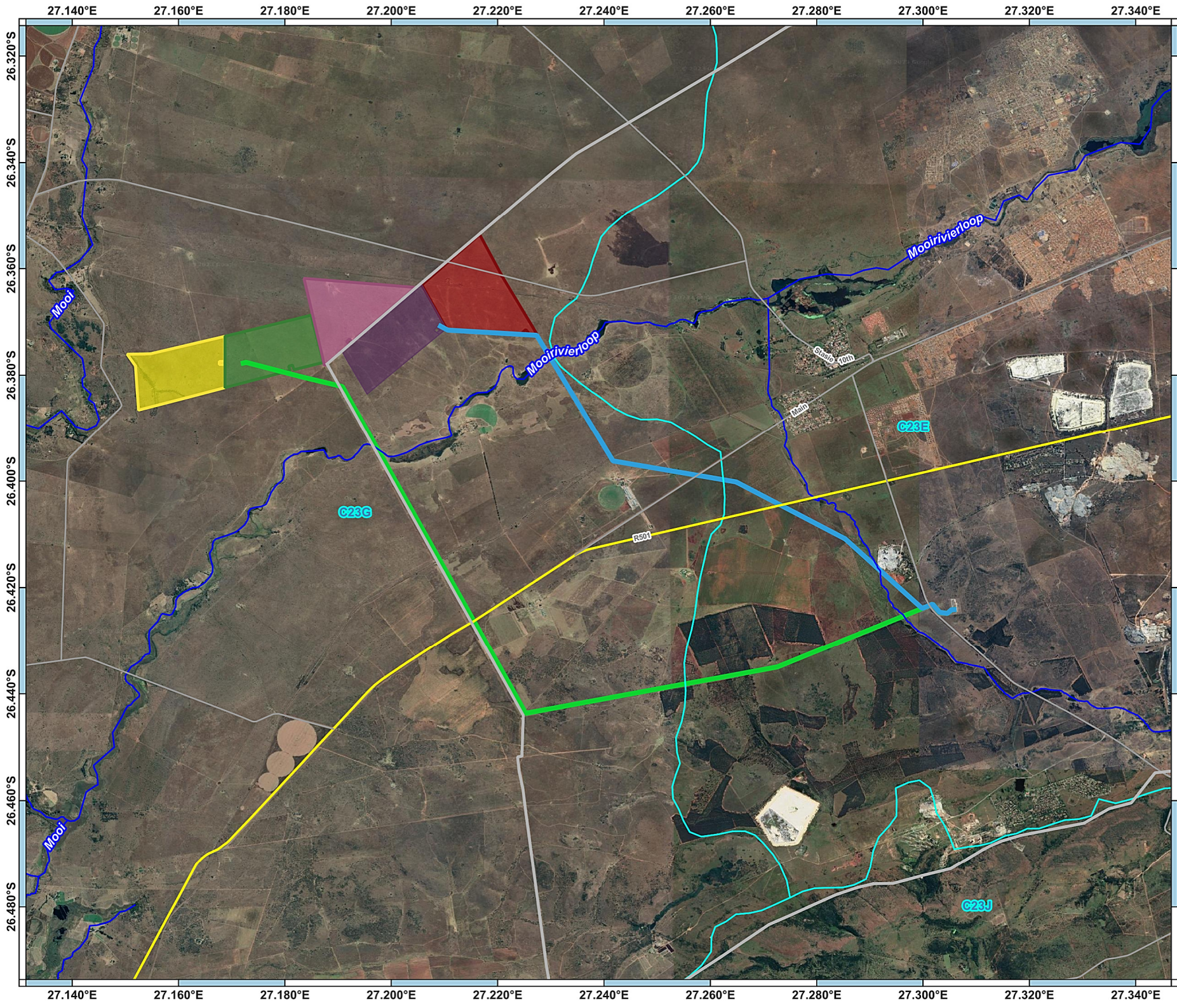
- Servitude\_Power Lines
- Alternative 1
  - Preferred Route

### Mopane PV Solar Park

- Mopane Solar PV 1
- Mopane Solar PV 2
- Mopane Solar PV 3
- Mopane Solar PV 4
- Mopane Solar PV 5




 AGES Limpopo (Pty) Ltd  
 120 Marshall Street  
 Polokwane, 0699  
 +27 15 291 1577  
 Map Composed by:  
 D. van der Walt  
 Projection: WGS 84  
 2023-01-20



# Locality Map

## Mopane Solar Park

North West & Gauteng Province

### Municipal Data

Provincial Boundaries

### Hydrology

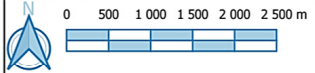
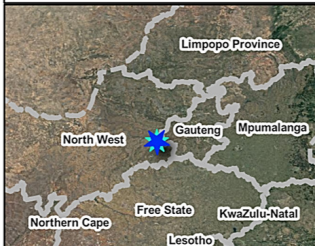
- Primary Rivers
- Secondary Rivers
- Quaternary Catchments

### Site Specific Data

- Servitude\_Power Lines
- Alternative 1
- Preferred Route

### Mopane PV Solar Park

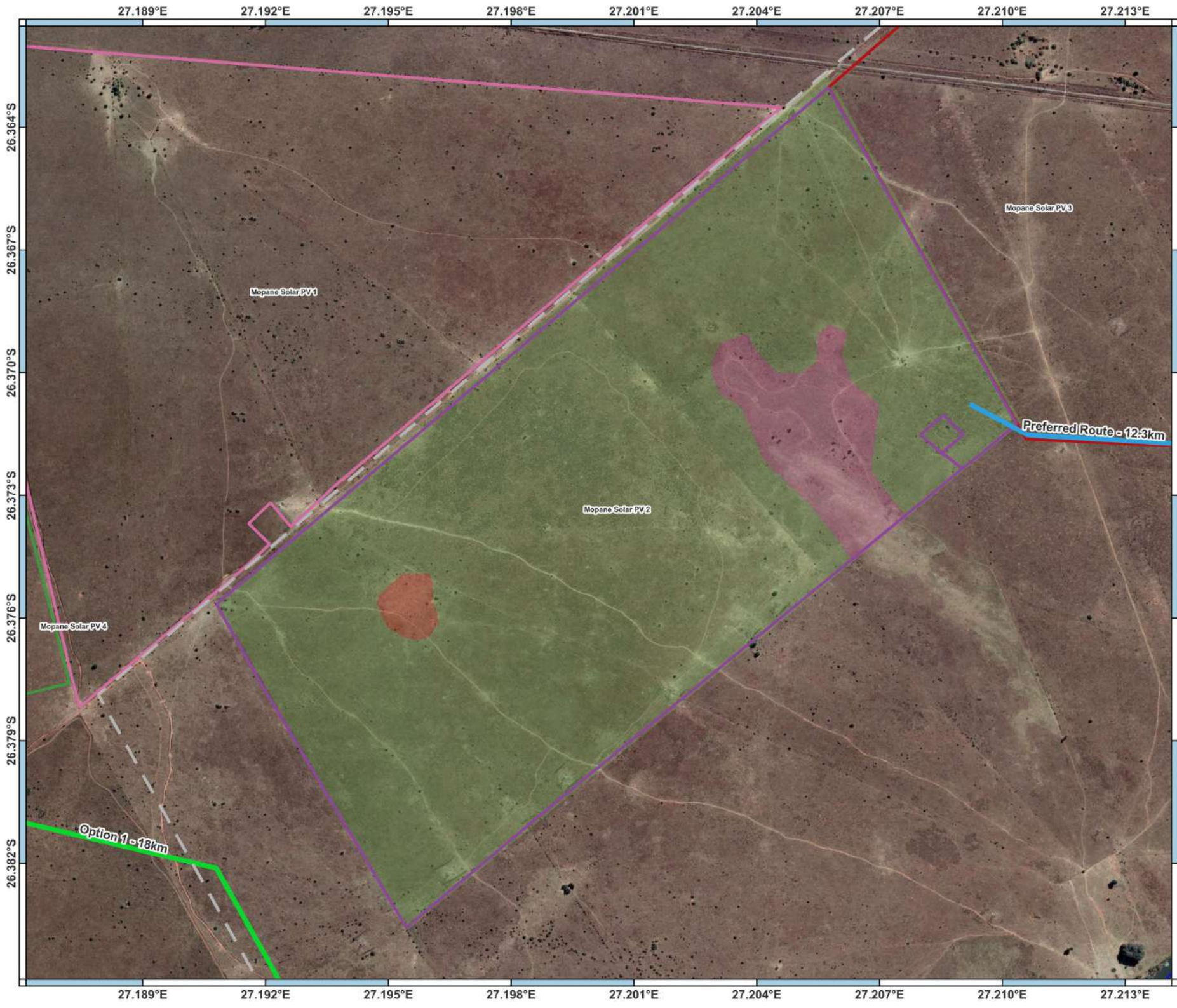
- Mopane Solar PV 1
- Mopane Solar PV 2
- Mopane Solar PV 3
- Mopane Solar PV 4
- Mopane Solar PV 5



AGES Limpopo (Pty) Ltd  
 120 Marshall Street  
 Polokwane, 0699  
 +27 15 291 1577

Map Composed by:  
 D. van der Walt  
 Projection: WGS 84  
 2023-01-20



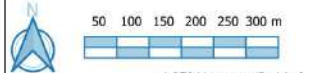


# Vegetation & Sensitivity Map

## Mopane Solar PV 2

Gauteng Province  
West Rand District  
Merafong Local Municipality

- Locality**
- Municipal Data**
- Provincial Boundaries
- Hydrology**
- Secondary Rivers
- Site Specific Data**
- Servitude\_Power Lines
- Alternative 1
  - Preferred Route
- Mopane PV Solar Park**
- Mopane Solar PV 1
  - Mopane Solar PV 2
  - Mopane Solar PV 3
  - Mopane Solar PV 4
- Ecological Sensitivity**
- Mopane Solar PV 2 - Vegetation & Sensitivity
- High Sensitivity - Drainage features
  - Medium Sensitivity - Indigenous grassland/ woodland with widespread status
  - Low Sensitivity - Degraded / modified land



AGES Limpopo (Pty) Ltd  
120 Marshall Street  
Polokwane, 0699  
+27 15 291 1577

Map Composed by:  
D. van der Walt  
Projection: WGS 84  
2023-01-27



# Site Layout over Sensitivity Map

## Mopane Solar PV 2

Gauteng- & North West Province

### Site Specific Data

#### Internal Powerlines

- Collector Substation
- PV 3 - Internal Powerlines
- PV 4 - Internal Powerlines
- PV 5 - Internal Powerlines

#### Mopane SP PV 2

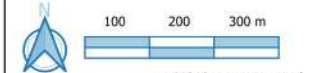
- PV Panels
- Restricted Area
- Laydown Area
- Roads
- Phase 2
- Construction Laydown Area
- Guard House
- Permanent Laydown Area
- On Site Substation
- Substation Control Room
- Septic Tank
- Water Treatment Plant

#### Heritage Sites

- PV 2 - Heritage Sites; Low Significance
- PV 2 - Heritage Sites; Medium Significance

#### Sensitivity Map Mopane

- Low Sensitivity - Degraded / modified land
- Medium Sensitivity - Indigenous woodland / Grassland with widespread status
- High Sensitivity - Drainage features



AGES Limpopo (Pty) Ltd  
 120 Marshall Street  
 Polokwane, 0699  
 +27 15 291 1577

Map Composed by:  
 D. van der Walt  
 Projection: WGS 84  
 2023-06-08





# Site Layout Plan (Sensitivity Map)

## Mopane Solar PV 2

### Gauteng- & North West Province

Provincial Boundaries

#### Site Specific Data

##### Powerline Options

- Option 1 - 14.4 km
- Option 2 - 16.2 km
- Internal Powerline

#### Heritage Sites

##### PV 2 - Heritage Sites

- Low Significance
- Medium Significance
- Mopane PV 2 - PV Panels
- Collector SS
- Restricted Area
- Substation

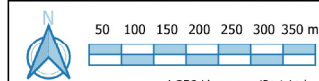
#### Battery Infrastructure

- Battery Area
- Battery Containers
- Power Conversion System
- Roads
- Fences

#### Ecological Sensitivity

##### Vegetation & Sensitivity

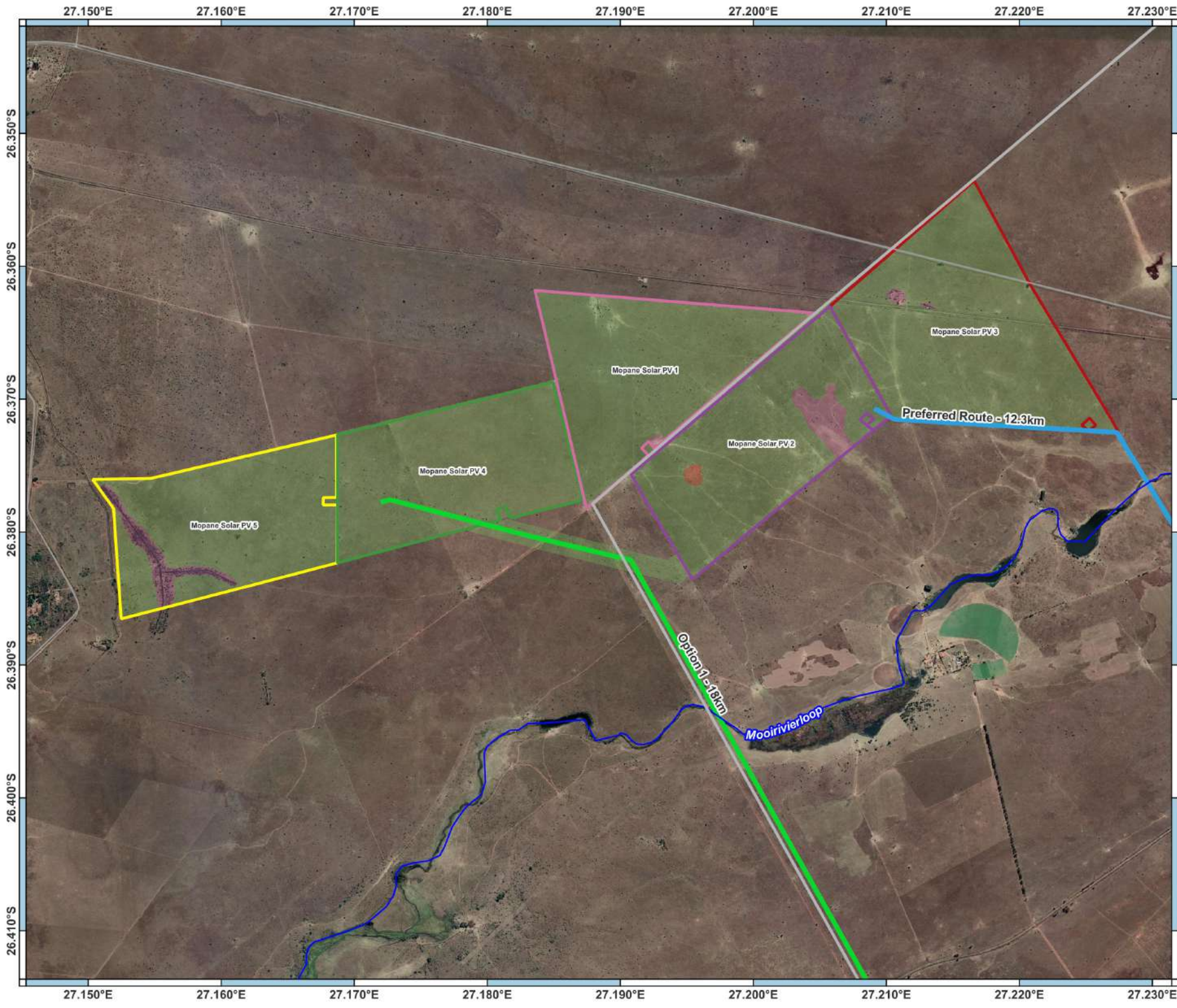
- High Sensitivity - Drainage features
- Medium Sensitivity - Indigenous grassland / woodland with widespread status
- Low Sensitivity - Degraded / modified land



AGES Limpopo (Pty) Ltd  
120 Marshall Street  
Polokwane, 0699  
+27 15 291 1577

Map Composed by:  
D. van der Walt  
Projection: WGS 84  
2023-03-09





# Vegetation & Sensitivity Map

## Mopane Solar PV Park

Gauteng- & North West Province

### Site Specific Data

#### Ecological Sensitivity

##### Mopane Solar PV 1 - Vegetation & Sensitivity

- Medium Sensitivity - Indigenous grassland/ woodland with widespread status
- Low Sensitivity - Degraded / modified land

##### Mopane Solar PV 2 - Vegetation & Sensitivity

- High Sensitivity - Drainage features
- Medium Sensitivity - Indigenous grassland/ woodland with widespread status
- Low Sensitivity - Degraded / modified land

##### Mopane Solar PV 3 - Vegetation & Sensitivity

- Medium Sensitivity - Indigenous woodland/ grassland with widespread status
- Low Sensitivity - Degraded / modified land

##### Mopane Solar PV 4 - Vegetation & Sensitivity

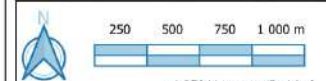
- Medium Sensitivity - Indigenous woodland/ grassland with widespread status

##### Mopane SP PV 5 Vegetation & Sensitivity

- Medium Sensitivity - Indigenous grassland/ woodland with widespread status
- Low Sensitivity - Degraded / Modified Land

##### Mopane Solar PV Powerline

- Medium Sensitivity - Indigenous grassland/ woodland with widespread status



AGES Limpopo (Pty) Ltd  
 120 Marshall Street  
 Polokwane, 0699  
 +27 15 291 1577

Map Composed by:  
 D. van der Walt  
 Projection: WGS 84  
 2023-01-27

