

NGODWANA DAM SENSITIVITY PLAN

situated on
THE FARM NGODWANA NO. 1030 JT

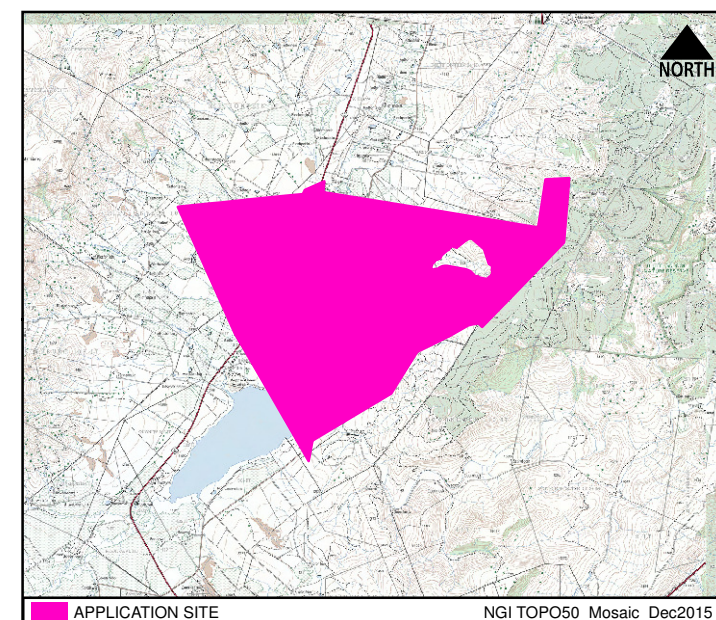
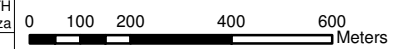
Legend - general

Access boom	Haul Route 1
Area A: General fill (1 ha)	Haul Route 2
Area B: Backup Topsoil (0.34 ha)	Subsoil toe drain
Culvert	Establishment Area Alternative 1
N4 Turnoff	Establishment Area Alternative 2 / Works Area 1
Proposed foot bridge	Establishment Area Alternative 3 / Works Area 2
Steep section	Establishment Area Alternative 4
Watercourse crossing	Establishment area Alternative 5
Water Treatment Works	Raising of fuseplug embankment
Riparian delineation	Stabilizing berm
Existing access road	Working width (8 m)
Route 1 - SECTION 5	Application site
Route 1 - SECTION 7	Farm portion
Route 2 - SECTION 4	Parent farm

Sensitivity Legend

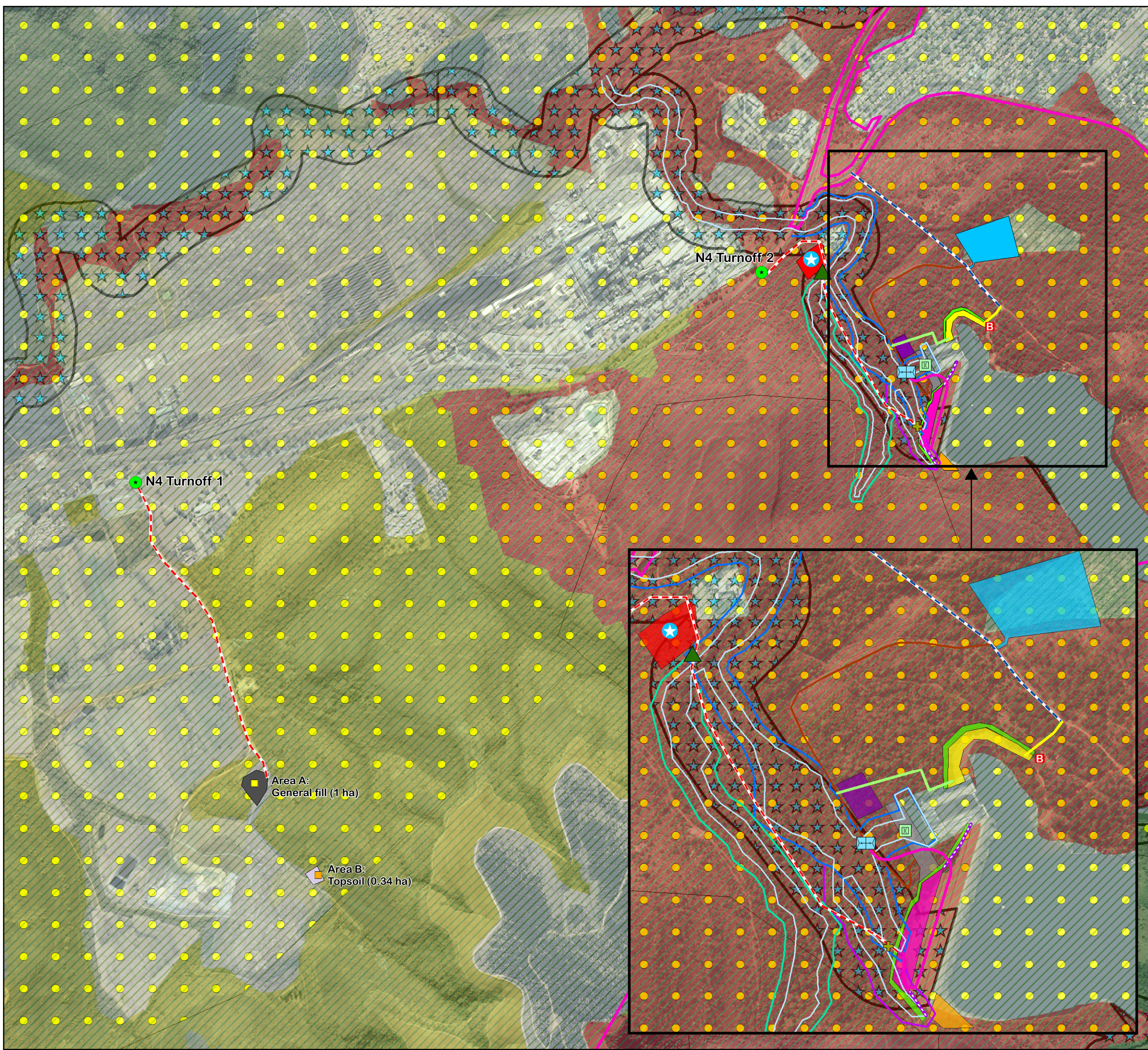
Waterways	
	River buffer (Appendix 7)
	Drainage buffer (Appendix 8)
	Seepage buffer (Appendix 9)
NBA 2011: Threatened Ecosystems	
	Vulnerable
MBSP 2013: Terrestrial Assessment	
	CBA Irreplaceable
	CBA Optimal
	ESA Protected Area buffer
	Heavily modified
MBSP 2013: Freshwater Assessment	
	CBA: Rivers

DATE:	28/10/2020
LOCAL AUTHORITY:	CITY OF MBOMBELA LOCAL MUNICIPALITY
PLAN NUMBER:	Ngodwana Dam
SCALE:	1:15,000
PREPARED FOR:	Ecologes Environmental Consultants
DRAWN:	DIGITAL EARTH
COORDINATE SYSTEM:	W.G. 31



APPLICATION SITE

NGI TOPO50_Mosaic_Dec2015



N4 Turnoff 2

N4 Turnoff 1

Area A:
General fill (1 ha)

Area B:
Topsoil (0.34 ha)