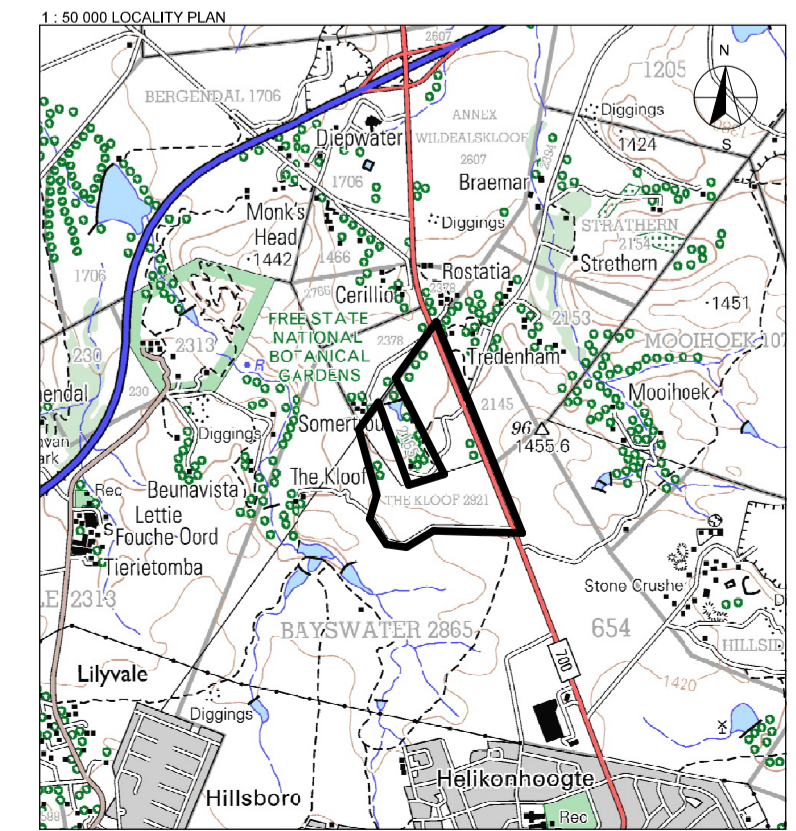
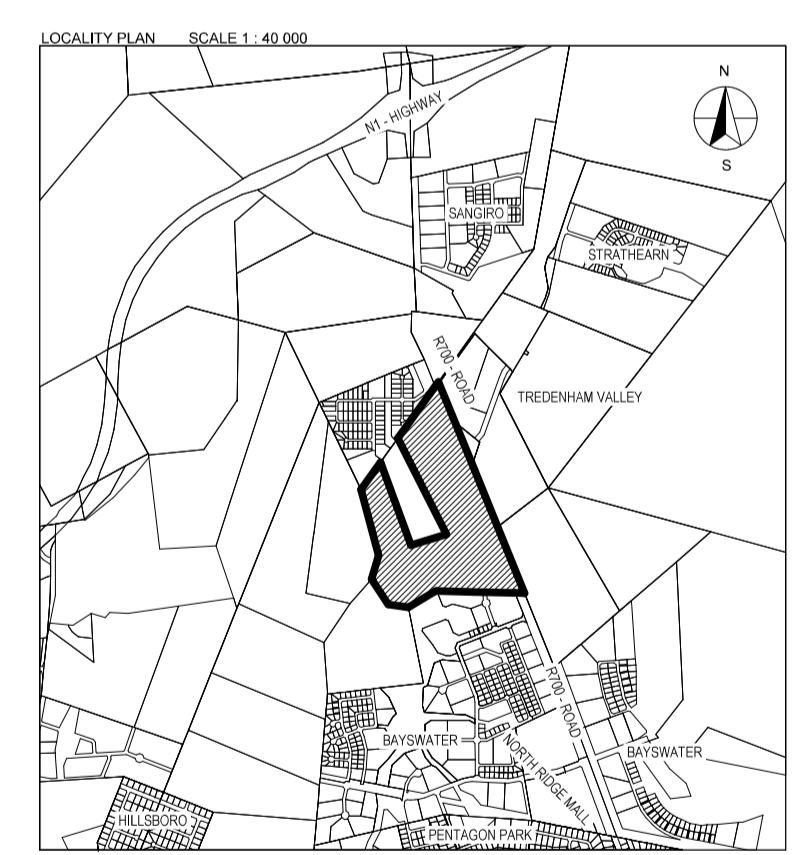
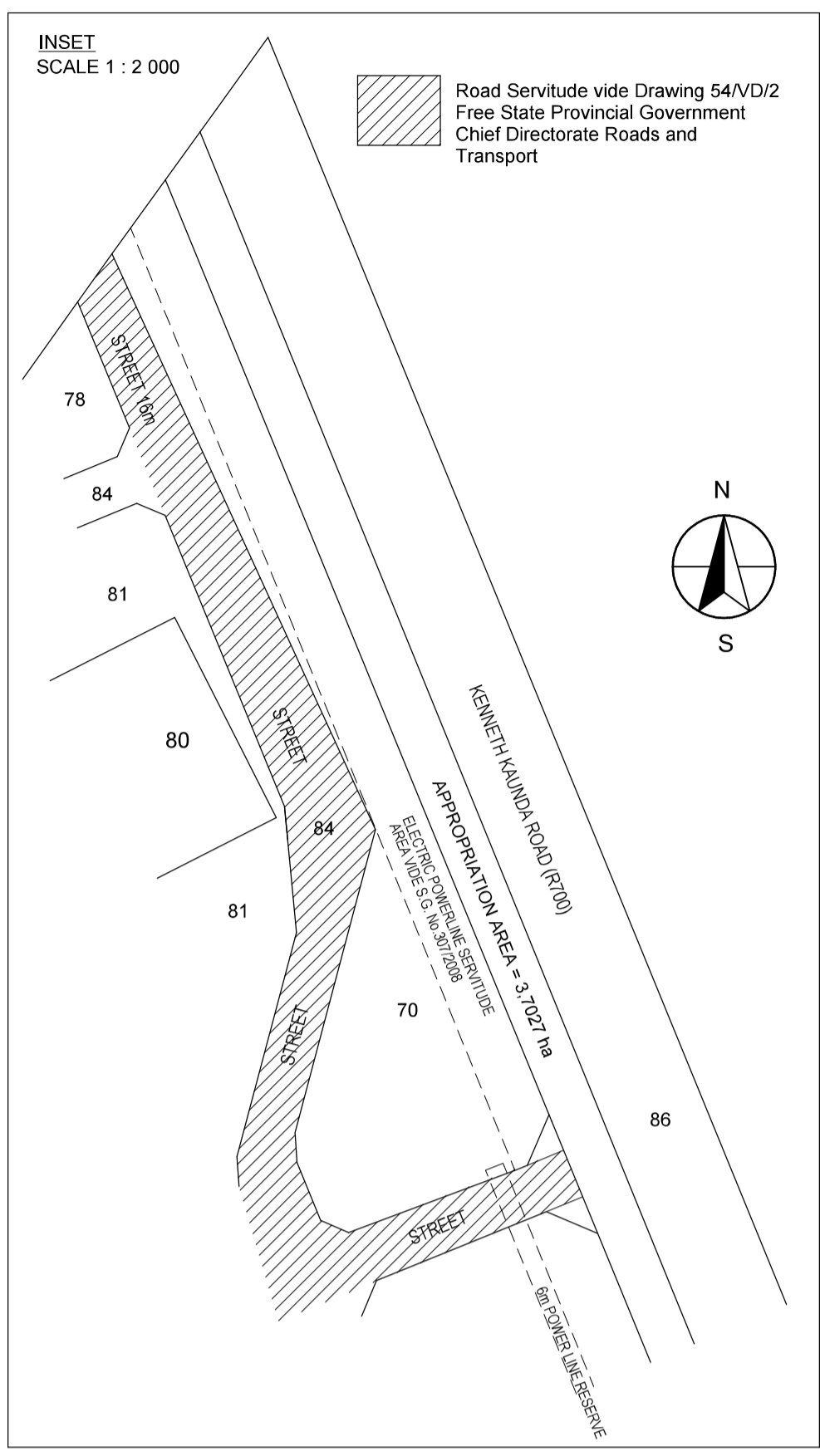


Annexure B

Proposed Layout Map



TOWN PLANNERS:
 N. DEVENISH - Pr. PLN A/1133/1999
 MAKECHA DEV. ASS. CC TRADING AS MDA

GEOTECHNICAL REPORT:
 A REPORT WAS CONDUCTED BY AURECON SOUTH AFRICA (PTY) LTD THAT ACCOMPANY THIS LAYOUT PLAN AS PART OF THE TOWN ESTABLISHMENT MEMORANDUM.

B.J. VAN VUUREN (Technologist - ND Civil-General, B-Tech Geotechnical, B.Sc. Hon. - Transport)
 SIMLAB (PTY) LTD

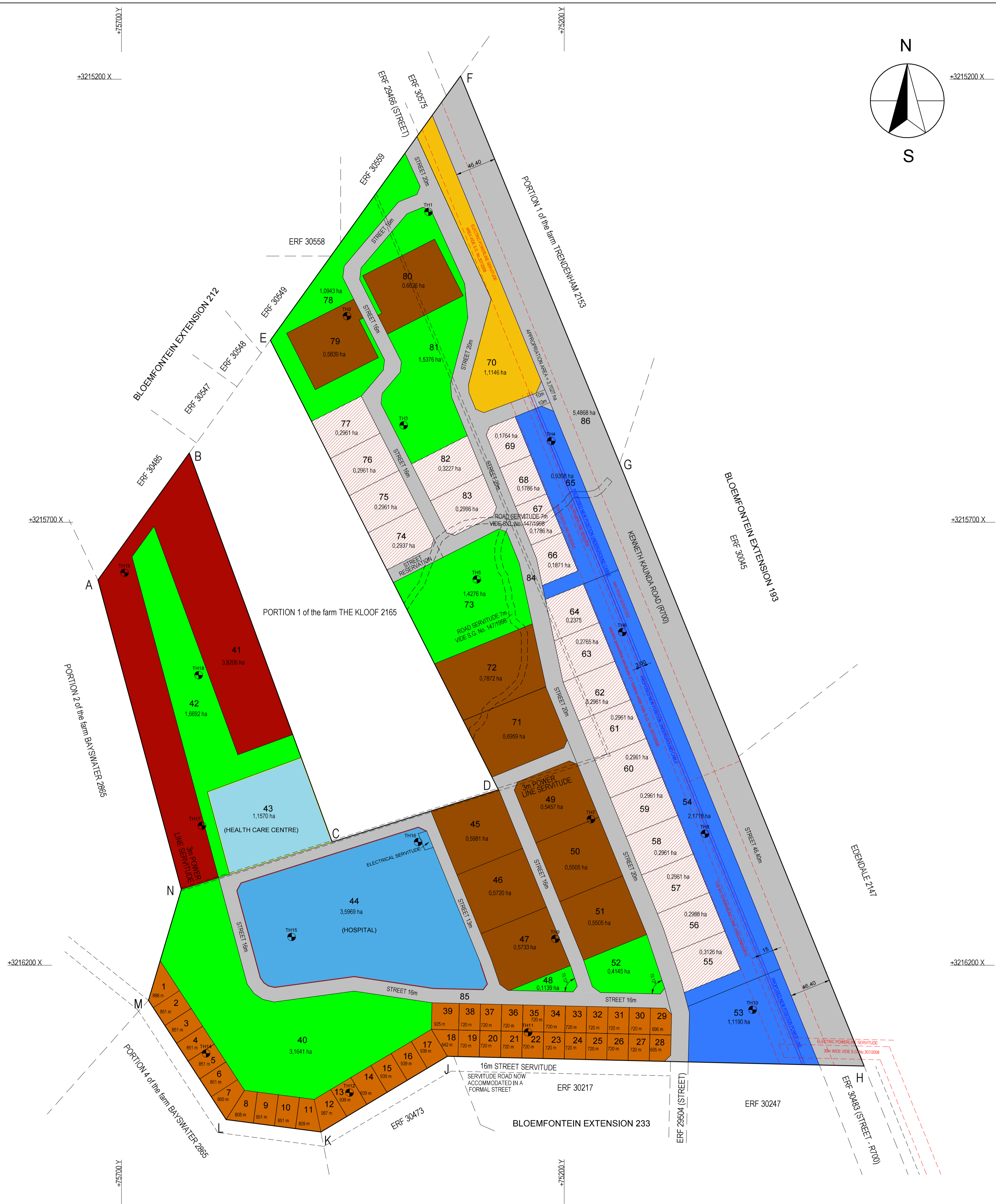
CONTOURS:
 THE CONTOURS ON THIS PLAN HAVE BEEN SURVEYED BY CONVENTIONAL METHODS AND ADHERE TO REQUIREMENTS AS STIPULATED IN THE TOWNSHIPS ORDINANCE, 1969 (No. 9 OF 1969)

J. NORTJÉ (PLS 1065)
 DE WAAL EN NORTJÉ LAND SURVEYORS

FLOODLINES:
 IT IS HEREBY CERTIFIED THAT THE 1:100 YEAR AND 1:50 YEAR FLOODLINES HAVE BEEN DETERMINED BY AURECON SOUTH AFRICA (PTY) LTD THAT ACCOMPANY THIS LAYOUT PLAN AS PART OF THE TOWN ESTABLISHMENT MEMORANDUM

J.H.W. VERMAAK (Pr. Tech Eng) Ninham Shand
 AURECON SOUTH AFRICA (PTY) LTD

TRAFFIC IMPACT:
 M.J. MARAIS (Pr Eng) 920023
 M.J. MARAIS



LEGEND:

| ZONING | INDICATION OF MAP | LAND USE | ERF NUMBERS | NO. OF ERVEN | AREA HA | % |
|--|-------------------|--------------------------|----------------------------|--------------|---------|-------|
| SPECIAL USE 777 SINGLE RESIDENTIAL UNITS | [Symbol] | SINGLE RESIDENTIAL UNITS | 1 - 17 | 17 | 1,494 | 3.04 |
| SPECIAL USE 777 DWELL RESIDENTIAL UNITS | [Symbol] | RESIDENTIAL UNITS | 18 - 27, 30 - 39 | 20 | 1,450 | 2.95 |
| SPECIAL USE 777 DWELL RESIDENTIAL UNITS | [Symbol] | RESIDENTIAL UNITS | 28 - 29 | 2 | 0,142 | 0.29 |
| SPECIAL USE 777 RETIREMENT RESORT | [Symbol] | RETIREMENT RESORT | 41 | 1 | 3,826 | 7.78 |
| SPECIAL USE 777 HEALTH CARE CENTRE | [Symbol] | HEALTH CARE CENTRE | 43 | 1 | 1,157 | 2.36 |
| SPECIAL USE 777 PRIVATE HOSPITAL | [Symbol] | PRIVATE HOSPITAL | 44 | 1 | 3,569 | 7.32 |
| SPECIAL USE 777 BLOCK OF FLATS | [Symbol] | BLOCK OF FLATS | 45 - 47 | 3 | 1,743 | 3.55 |
| SPECIAL USE 777 BLOCK OF FLATS | [Symbol] | BLOCK OF FLATS | 49 - 51 | 3 | 1,647 | 3.35 |
| SPECIAL USE 777 BLOCK OF FLATS | [Symbol] | BLOCK OF FLATS | 71 - 72 | 2 | 1,483 | 3.02 |
| SPECIAL USE 777 BLOCK OF FLATS | [Symbol] | BLOCK OF FLATS | 79 | 1 | 0,589 | 1.19 |
| SPECIAL USE 777 BLOCK OF FLATS | [Symbol] | BLOCK OF FLATS | 80 | 1 | 0,662 | 1.35 |
| SPECIAL USE 777 BUSINESS | [Symbol] | BUSINESS | 53 | 1 | 1,190 | 2.38 |
| SPECIAL USE 777 BUSINESS | [Symbol] | BUSINESS | 54 | 1 | 2,171 | 4.42 |
| SPECIAL USE 777 BUSINESS | [Symbol] | BUSINESS | 65 | 1 | 0,938 | 1.91 |
| SPECIAL USE 777 TOWN HOUSES | [Symbol] | TOWN HOUSES | 55 - 62, 82 - 83 | 10 | 3,013 | 6.13 |
| SPECIAL USE 777 TOWN HOUSES | [Symbol] | TOWN HOUSES | 63 | 1 | 0,275 | 0.56 |
| SPECIAL USE 777 TOWN HOUSES | [Symbol] | TOWN HOUSES | 64 | 1 | 0,237 | 0.48 |
| SPECIAL USE 777 TOWN HOUSES | [Symbol] | TOWN HOUSES | 66 - 69 | 4 | 0,720 | 1.47 |
| SPECIAL USE 777 TOWN HOUSES | [Symbol] | TOWN HOUSES | 74 - 77 | 4 | 1,182 | 2.41 |
| PRIVATE OPEN SPACE | [Symbol] | PRIVATE OPEN SPACE | 40, 42, 48, 52, 73, 78, 81 | 7 | 9,421 | 19.18 |
| MUNICIPAL PURPOSES | [Symbol] | MUNICIPAL PURPOSES | 70 | 1 | 1,094 | 2.23 |
| STREET | [Symbol] | STREET | 84, 85, 86 | 3 | 11,132 | 22.68 |
| TOTAL | | | | 86 | 49,106 | 100 |

- NOTES:**
- THE FIGURE A,B,C,D,E,F,G,H,I,K,L,M,N,A REPRESENTS PROPOSED TOWNSHIP ESTABLISHMENT ON THE FARM THE KLOOF 2921, DISTRICT BLOEMFONTEIN, AREA = 49,1106 HA.
 - ALL SPLAYS ARE 7 X 7 METER UNLESS INDICATED OTHERWISE.
 - ALL MEASUREMENTS ARE APPROXIMATE AND ARE SUBJECT TO FINAL SURVEYING.
 - ERF NUMBERS ALLOCATED ARE TEMPORARY.
 - THE RULING SINGLE RESIDENTIAL ERF SIZE IS 720m².
 - THE SMALLEST SINGLE RESIDENTIAL ERF SIZE IS 642m².
 - STREET WIDTH IS AS INDICATED.
 - STREET LENGTH 3.5km.
 - MINIMUM STREET GRADIENT: 1:100
 - MAXIMUM STREET GRADIENT: 1:12.5
 - 1.0m COUNTOUR INTERVALS
 - TEST HOLE.
- EXISTING POWER LINE SERVITUDE
 — PROPOSED POWER LINE SERVITUDE

HENNIE LAMBRECHTS
ARGITEKTE
 BLOEMFONTEIN

DRAWN: C.J. DRAWING CHECKED: N.D.
 DESIGNED: H.L. & N.D. DESIGN CHECKED: N.D.

CLIENT: JOINT EFFORT TRUST

mda Town & Regional Planners, Environmental & Development Consultants
 PO Box 100982, 9 Barnes Street, Westdene, BLOEMFONTEIN, E-mail: admin@mdagroup.co.za

LOCAL AUTHORITY: MANGAUNG METRO MUNICIPALITY

PROJECT: PROPOSED TOWNSHIP ESTABLISHMENT ON THE FARM THE KLOOF 2921, BLOEMFONTEIN

PLAN TYPE: PROPOSED LAYOUT PLAN

SCALE: 1 : 2 500 DATE: 03/08/2017

PROJECT NO. 40729 MD53