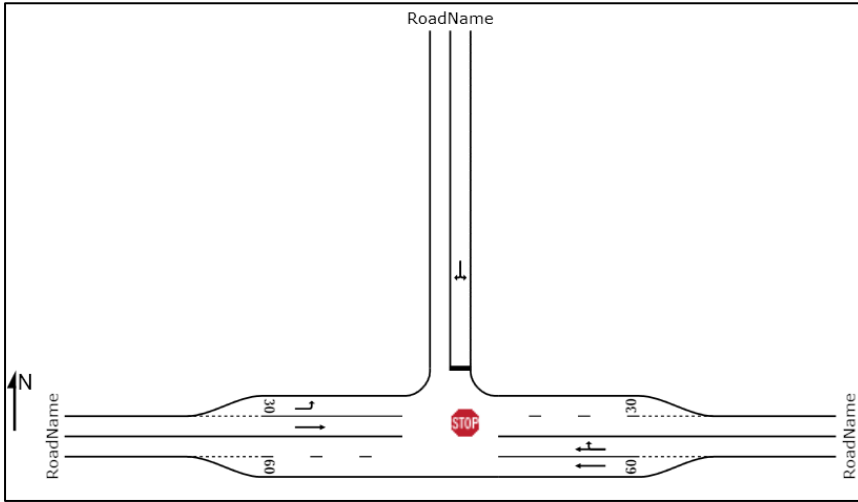


2017 Base Year Traffic

Intersection 1: R580 and Road A (AM Peak)



MOVEMENT SUMMARY

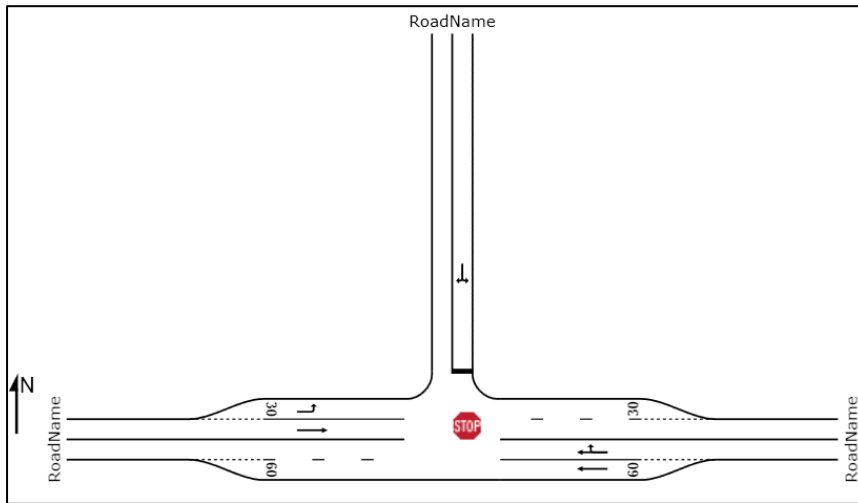
STOP Site: Intersection 1: R580 and Road A -AM

AM base
Stop (Two-Way)

Movement Performance - Vehicles

Mov ID	ODMo v	Demand Flows Total	Demand Flows HV %	Deg. Satn v/c	Average Delay sec	Level of Service	95% Back of Queue Vehicles	95% Back of Queue Distance m	Prop. Queued	Effective Stop Rate per veh	Average Speed km/h
East: RoadName											
5	T1	81	26.0	0.094	0.2	LOS A	0.4	3.2	0.09	0.15	58.2
6	R2	94	7.0	0.094	6.2	LOS A	0.4	3.2	0.27	0.45	53.1
Approach		175	15.8	0.094	3.4	NA	0.4	3.2	0.19	0.31	55.3
North: RoadName											
7	L2	128	2.0	0.143	8.5	LOS A	0.6	4.2	0.20	0.90	51.4
9	R2	12	64.0	0.143	15.8	LOS C	0.6	4.2	0.20	0.90	48.8
Approach		140	7.1	0.143	9.1	LOS A	0.6	4.2	0.20	0.90	51.2
West: RoadName											
10	L2	60	39.0	0.041	6.0	LOS A	0.0	0.0	0.00	0.57	52.0
11	T1	75	11.0	0.041	0.0	LOS A	0.0	0.0	0.00	0.00	60.0
Approach		135	23.5	0.041	2.7	NA	0.0	0.0	0.00	0.25	56.1
All Vehicles		449	15.4	0.143	5.0	NA	0.6	4.2	0.13	0.48	54.2

Intersection 1: R580 and Road A (PM Peak)



MOVEMENT SUMMARY

Site: Intersection 1: R580 and Road A

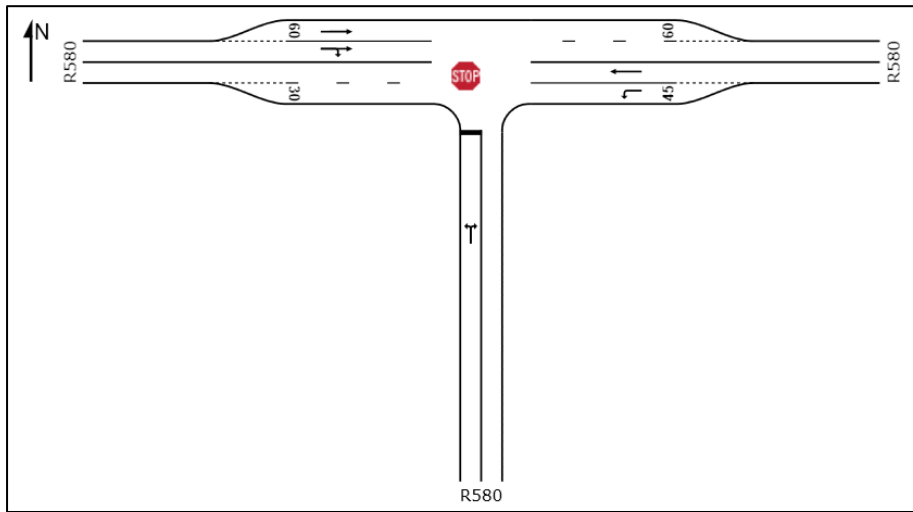
PM base

Stop (Two-Way)

Movement Performance - Vehicles

Mov ID	ODMo v	Demand Flows Total veh/h	Deg. Satn HV %	Deg. Satn v/c	Average Delay sec	Level of Service	95% Back of Queue Vehicles veh	95% Back of Queue Distance m	Prop. Queued	Effective Stop Rate per veh	Average Speed km/h
East: RoadName											
5	T1	86	24.0	0.089	0.3	LOS A	0.4	3.1	0.11	0.17	58.0
6	R2	82	8.0	0.089	6.3	LOS A	0.4	3.1	0.27	0.41	53.3
Approach		168	16.2	0.089	3.2	NA	0.4	3.1	0.19	0.29	55.6
North: RoadName											
7	L2	98	15.0	0.206	9.6	LOS A	0.9	6.5	0.35	0.91	50.4
9	R2	65	2.0	0.206	11.3	LOS B	0.9	6.5	0.35	0.91	50.6
Approach		163	9.8	0.206	10.3	LOS B	0.9	6.5	0.35	0.91	50.5
West: RoadName											
10	L2	14	46.0	0.010	6.1	LOS A	0.0	0.0	0.00	0.57	51.7
11	T1	124	28.0	0.075	0.0	LOS A	0.0	0.0	0.00	0.00	60.0
Approach		138	29.8	0.075	0.6	NA	0.0	0.0	0.00	0.06	59.0
All Vehicles		469	18.0	0.206	4.9	NA	0.9	6.5	0.19	0.44	54.6

Intersection 2: R580 and R580 (AM Peak)



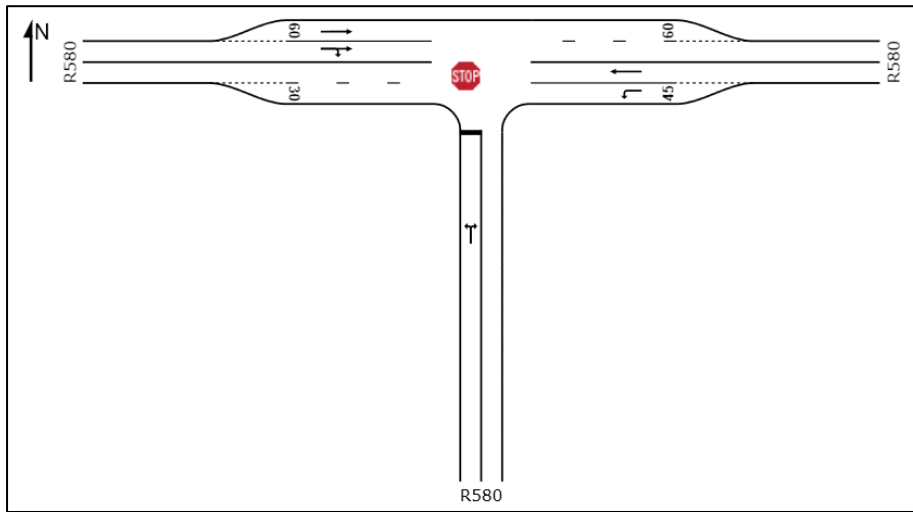
MOVEMENT SUMMARY

 Site: Intersection 2: R580 & R580 (Base Year) AM

AM Base Year
Stop (Two-Way)

Movement Performance - Vehicles											
Mov ID	ODMo	Demand Flows		Deg. Satn	Average Delay	Level of Service	95% Back of Queue		Prop. Queued	Effective Stop Rate	Average Speed
	v	Total	HV	v/c	sec		Vehicles	Distance		per veh	km/h
		veh/h	%				veh	m			
South: R580											
1	L2	95	6.0	0.214	8.8	LOS A	1.1	7.7	0.28	0.90	51.1
3	R2	139	2.0	0.214	9.7	LOS A	1.1	7.7	0.28	0.90	51.0
Approach		234	3.6	0.214	9.3	LOS A	1.1	7.7	0.28	0.90	51.1
East: R580											
4	L2	28	0.0	0.015	5.5	LOS A	0.0	0.0	0.00	0.58	53.6
5	T1	69	24.0	0.041	0.0	LOS A	0.0	0.0	0.00	0.00	60.0
Approach		98	17.0	0.041	1.6	NA	0.0	0.0	0.00	0.17	58.0
West: R580											
11	T1	129	11.0	0.092	0.1	LOS A	0.3	2.4	0.09	0.17	58.0
12	R2	81	3.0	0.092	5.8	LOS A	0.3	2.4	0.16	0.30	54.8
Approach		211	7.9	0.092	2.3	NA	0.3	2.4	0.11	0.22	56.7
All Vehicles		542	7.7	0.214	5.2	NA	1.1	7.7	0.17	0.50	54.3

Intersection 2: R580 and R580 (PM Peak)



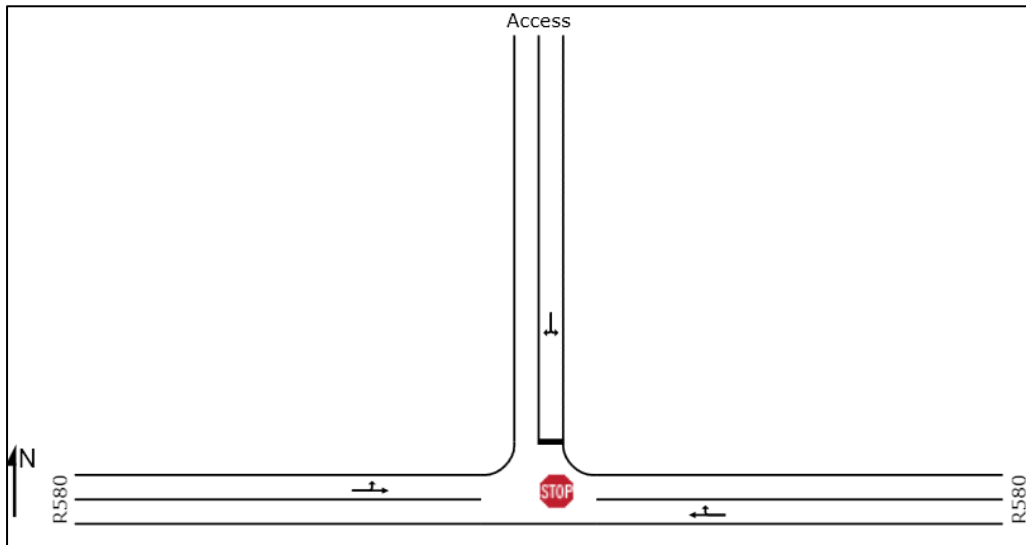
MOVEMENT SUMMARY

 Site: Intersection 2: R580 & R580 (Base Year)

PM Base Year
Stop (Two-Way)

Movement Performance - Vehicles											
Mov ID	ODMo	Demand Flows		Deg. Satn	Average Delay	Level of Service	95% Back of Queue		Prop. Queued	Effective Stop Rate	Average Speed
	v	Total	HV	v/c	sec		Vehicles	Distance		per veh	km/h
		veh/h	%				veh	m			
South: R580											
1	L2	62	11.9	0.056	9.3	LOS A	0.3	2.3	0.31	0.86	51.1
3	R2	5	20.0	0.056	10.8	LOS B	0.3	2.3	0.31	0.86	50.6
Approach		67	12.5	0.056	9.4	LOS A	0.3	2.3	0.31	0.86	51.1
East: R580											
4	L2	93	1.1	0.050	5.6	LOS A	0.0	0.0	0.00	0.58	53.6
5	T1	106	36.6	0.068	0.0	LOS A	0.0	0.0	0.00	0.00	60.0
Approach		199	20.1	0.068	2.6	NA	0.0	0.0	0.00	0.27	56.8
West: R580											
11	T1	155	25.2	0.077	0.1	LOS A	0.1	0.8	0.05	0.05	59.2
12	R2	16	13.3	0.077	6.3	LOS A	0.1	0.8	0.07	0.08	56.4
Approach		171	24.1	0.077	0.6	NA	0.1	0.8	0.05	0.06	59.0
All Vehicles		437	20.5	0.077	2.9	NA	0.3	2.3	0.07	0.28	56.6

Intersection 3: R580 and Access (AM Peak)



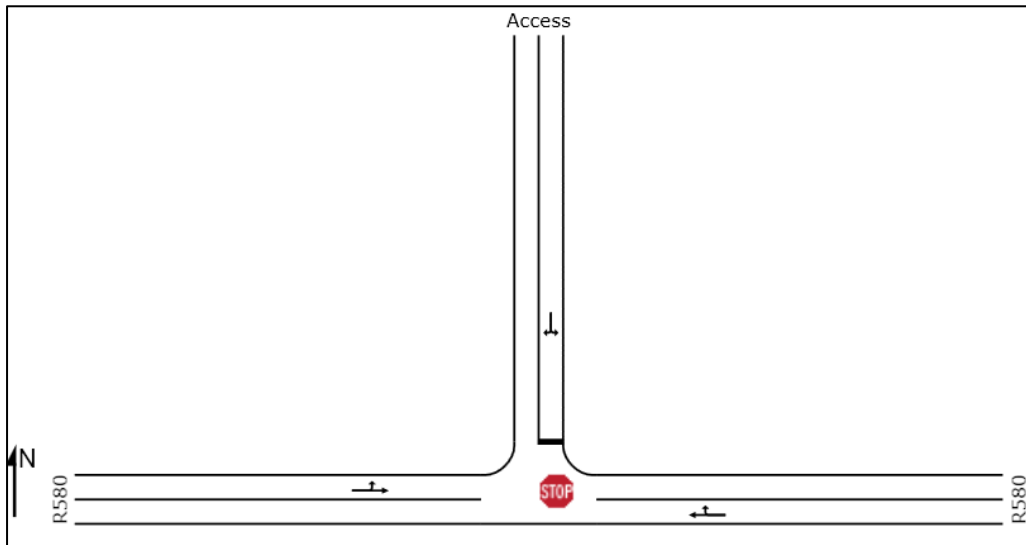
MOVEMENT SUMMARY

Site: Intersection 3: R580 and Access (Base Year) -AM

AM Base year
Stop (Two-Way)

Movement Performance - Vehicles											
Mov ID	ODMo	Demand Flows		Deg. Satn	Average Delay	Level of Service	95% Back of Queue		Prop. Queued	Effective Stop Rate	Average Speed
	v	Total	HV	v/c	sec		Vehicles	Distance		per veh	km/h
		veh/h	%				veh	m			
East: R580											
5	T1	109	44.0	0.073	0.0	LOS A	0.0	0.1	0.01	0.01	59.9
6	R2	1	100.0	0.073	7.3	LOS A	0.0	0.1	0.01	0.01	55.0
Approach		111	44.5	0.073	0.1	NA	0.0	0.1	0.01	0.01	59.8
North: Access											
7	L2	5	100.0	0.026	13.2	LOS B	0.1	1.3	0.45	0.92	49.0
9	R2	14	100.0	0.026	11.7	LOS B	0.1	1.3	0.45	0.92	48.4
Approach		19	100.0	0.026	12.1	LOS B	0.1	1.3	0.45	0.92	48.6
West: R580											
10	L2	1	100.0	0.144	6.1	LOS A	0.0	0.0	0.00	0.00	55.9
11	T1	264	8.0	0.144	0.0	LOS A	0.0	0.0	0.00	0.00	59.9
Approach		265	8.4	0.144	0.1	NA	0.0	0.0	0.00	0.00	59.9
All Vehicles		395	22.9	0.144	0.6	NA	0.1	1.3	0.02	0.05	59.2

Intersection 3: R580 and Access (PM Peak)



MOVEMENT SUMMARY

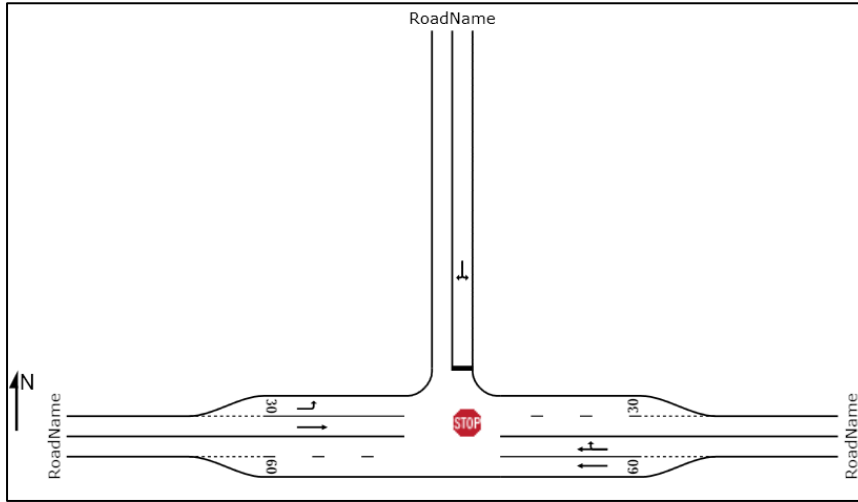
 Site: Intersection 3: R580 and Access (Base Year)

PM Base year
Stop (Two-Way)

Movement Performance - Vehicles											
Mov ID	ODMo	Demand Flows		Deg. Satn	Average Delay	Level of Service	95% Back of Queue		Prop. Queued	Effective Stop Rate	Average Speed
	v	Total	HV	v/c	sec		Vehicles	Distance		per veh	km/h
		veh/h	%				veh	m			
East: R580											
5	T1	142	0.0	0.074	0.0	LOS A	0.0	0.1	0.00	0.01	59.9
6	R2	1	100.0	0.074	6.4	LOS A	0.0	0.1	0.00	0.01	55.1
Approach		143	0.7	0.074	0.1	NA	0.0	0.1	0.00	0.01	59.9
North: Access											
7	L2	3	100.0	0.104	10.9	LOS B	0.3	4.5	0.30	0.97	49.8
9	R2	88	100.0	0.104	10.6	LOS B	0.3	4.5	0.30	0.97	49.2
Approach		92	100.0	0.104	10.6	LOS B	0.3	4.5	0.30	0.97	49.2
West: R580											
10	L2	1	100.0	0.041	6.1	LOS A	0.0	0.0	0.00	0.02	55.8
11	T1	79	0.0	0.041	0.0	LOS A	0.0	0.0	0.00	0.02	59.9
Approach		80	1.3	0.041	0.2	NA	0.0	0.0	0.00	0.02	59.9
All Vehicles		315	29.8	0.104	3.1	NA	0.3	4.5	0.09	0.29	56.3

2027 Horizon Year Traffic

Intersection 1: R580 and Road A (AM Peak)



MOVEMENT SUMMARY

STOP Site: Intersection 1: R580 and Road A -Horizon AM

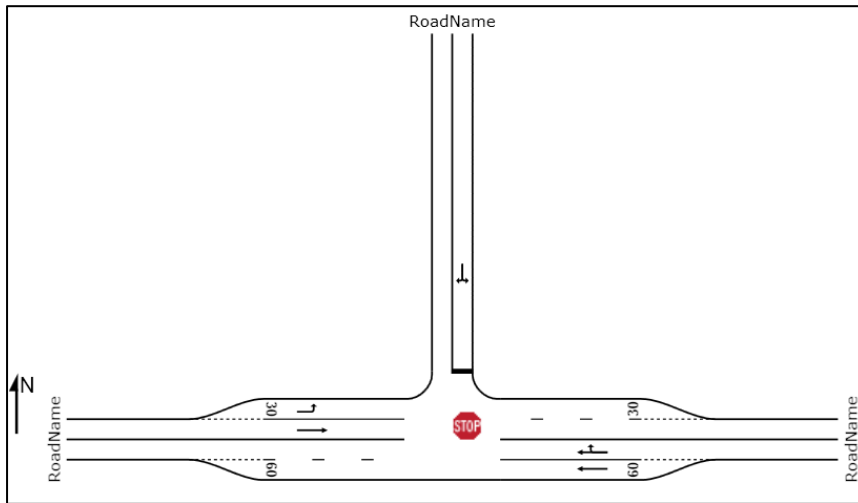
AM Horizon

Stop (Two-Way)

Movement Performance - Vehicles

Mov ID	ODMo v	Demand Flows		Deg. Satn v/c	Average Delay sec	Level of Service	95% Back of Queue		Prop. Queued	Effective Stop Rate per veh	Average Speed km/h
		Total veh/h	HV %				Vehicles veh	Distance m			
East: RoadName											
5	T1	136	26.0	0.080	0.4	LOS A	0.2	2.0	0.14	0.10	58.5
6	R2	25	7.0	0.080	7.4	LOS A	0.2	2.0	0.22	0.14	55.6
Approach		161	23.0	0.080	1.5	NA	0.2	2.0	0.16	0.10	58.0
North: RoadName											
7	L2	25	2.0	0.078	10.0	LOS B	0.3	2.3	0.53	0.91	49.0
9	R2	13	64.0	0.078	21.5	LOS C	0.3	2.3	0.53	0.91	46.6
Approach		38	22.7	0.078	13.9	LOS B	0.3	2.3	0.53	0.91	48.2
West: RoadName											
10	L2	13	39.0	0.009	6.0	LOS A	0.0	0.0	0.00	0.57	52.0
11	T1	320	11.0	0.176	0.0	LOS A	0.0	0.0	0.00	0.00	60.0
Approach		333	12.1	0.176	0.2	NA	0.0	0.0	0.00	0.02	59.6
All Vehicles		532	16.1	0.176	1.6	NA	0.3	2.3	0.08	0.11	58.1

Intersection 1: R580 and Road A (PM Peak)



MOVEMENT SUMMARY

Site: Intersection 1: R580 and Road A -Horizon

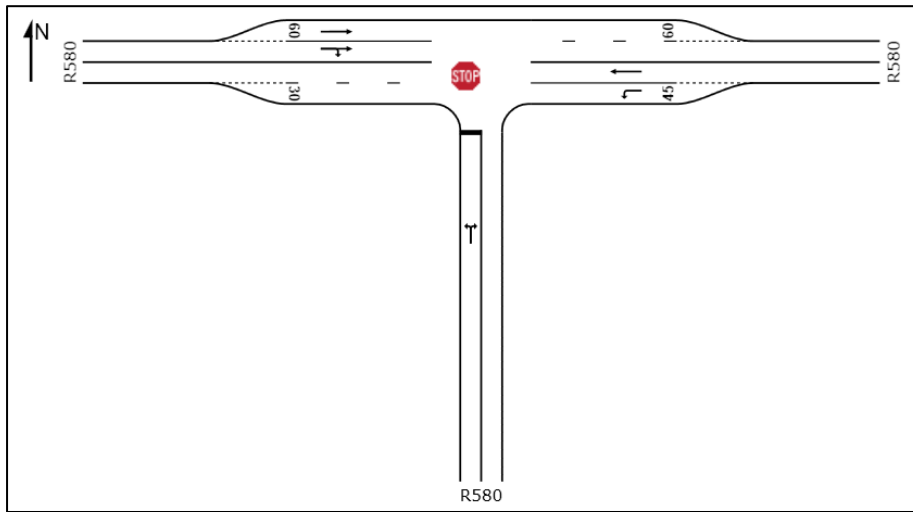
PM Horizon

Stop (Two-Way)

Movement Performance - Vehicles

Mov ID	ODMo v	Demand Flows		Deg. Satn v/c	Average Delay sec	Level of Service	95% Back of Queue		Prop. Queued	Effective Stop Rate per veh	Average Speed km/h
		Total veh/h	HV %				Vehicles veh	Distance m			
East: RoadName											
5	T1	105	24.0	0.111	0.3	LOS A	0.5	3.9	0.12	0.17	58.0
6	R2	100	8.0	0.111	6.5	LOS A	0.5	3.9	0.31	0.43	53.2
Approach		205	16.2	0.111	3.3	NA	0.5	3.9	0.21	0.30	55.5
North: RoadName											
7	L2	119	2.0	0.277	9.1	LOS A	1.2	8.7	0.42	0.92	50.3
9	R2	80	15.0	0.277	13.8	LOS B	1.2	8.7	0.42	0.92	49.6
Approach		199	7.2	0.277	11.0	LOS B	1.2	8.7	0.42	0.92	50.0
West: RoadName											
10	L2	17	46.0	0.012	6.1	LOS A	0.0	0.0	0.00	0.57	51.7
11	T1	152	28.0	0.092	0.0	LOS A	0.0	0.0	0.00	0.00	60.0
Approach		168	29.8	0.092	0.6	NA	0.0	0.0	0.00	0.06	59.0
All Vehicles		573	17.1	0.277	5.2	NA	1.2	8.7	0.22	0.44	54.4

Intersection 2: R580 and R580 (AM Peak)



MOVEMENT SUMMARY

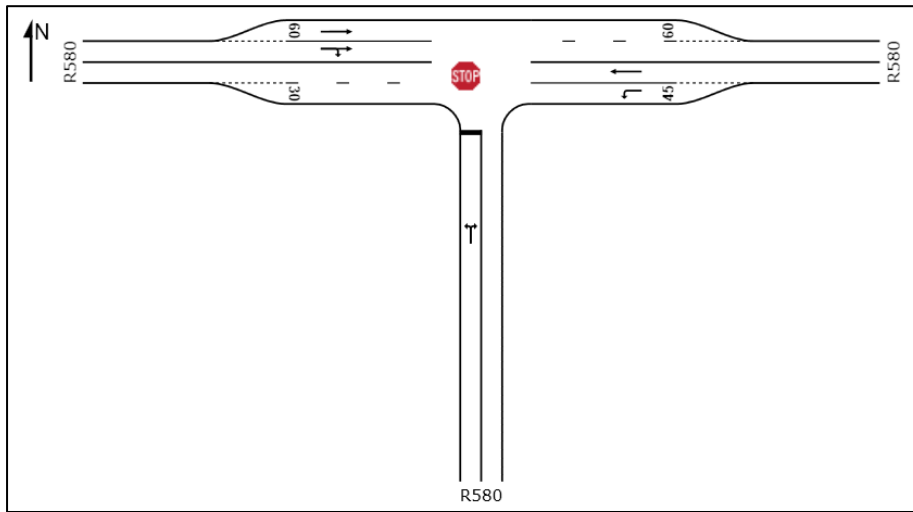
 Site: Intersection 2: R580 & R580 (Horizon Year) AM

AM Horizon Year
Stop (Two-Way)

Movement Performance - Vehicles

Mov ID	ODMo v	Demand Flows Total veh/h	Deg. Satn HV %	Deg. Satn v/c	Average Delay sec	Level of Service	95% Back of Queue Vehicles veh	95% Back of Queue Distance m	Prop. Queued	Effective Stop Rate per veh	Average Speed km/h
South: R580											
1	L2	116	0.0	0.285	8.7	LOS A	1.5	10.4	0.34	0.90	51.1
3	R2	176	3.6	0.285	10.4	LOS B	1.5	10.4	0.34	0.90	50.7
Approach		292	2.2	0.285	9.7	LOS A	1.5	10.4	0.34	0.90	50.8
East: R580											
4	L2	38	8.3	0.022	5.6	LOS A	0.0	0.0	0.00	0.57	53.3
5	T1	94	10.1	0.051	0.0	LOS A	0.0	0.0	0.00	0.00	60.0
Approach		132	9.6	0.051	1.6	NA	0.0	0.0	0.00	0.17	57.9
West: R580											
11	T1	162	2.6	0.113	0.1	LOS A	0.4	3.0	0.10	0.17	58.1
12	R2	101	2.1	0.113	5.9	LOS A	0.4	3.0	0.19	0.31	54.8
Approach		263	2.4	0.113	2.3	NA	0.4	3.0	0.13	0.22	56.7
All Vehicles		686	3.7	0.285	5.3	NA	1.5	10.4	0.20	0.50	54.3

Intersection 2: R580 and R580 (PM Peak)



MOVEMENT SUMMARY

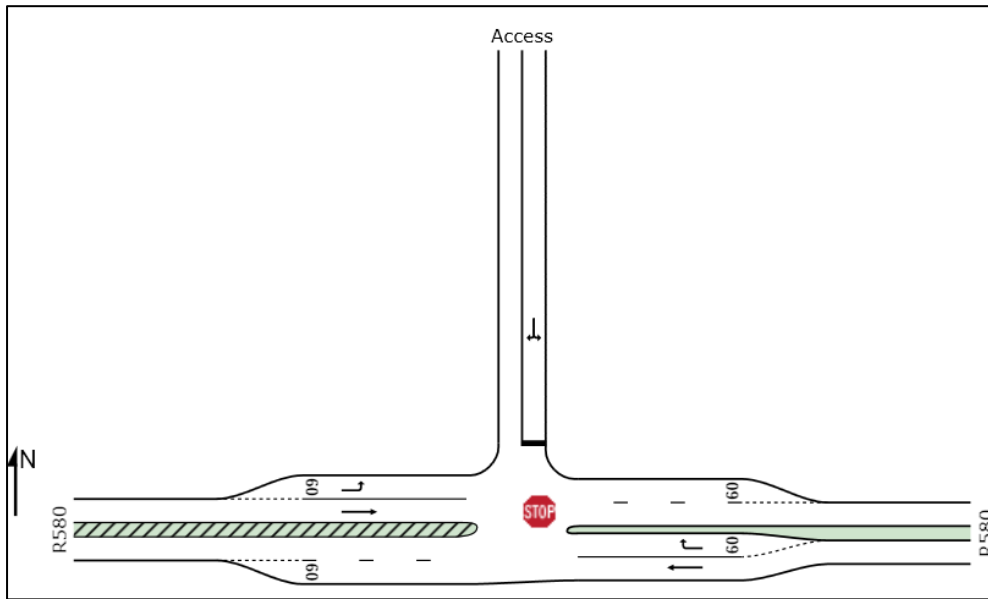
STOP Site: Intersection 2: R580 & R580 (Horizon Year)

PM Horizon Year
Stop (Two-Way)

Movement Performance - Vehicles

Mov ID	ODMo v	Demand Flows Total veh/h	Deg. Satn HV %	Deg. Satn v/c	Average Delay sec	Level of Service	95% Back of Queue Vehicles veh	95% Back of Queue Distance m	Prop. Queued	Effective Stop Rate per veh	Average Speed km/h
South: R580											
1	L2	76	12.5	0.085	10.3	LOS B	0.4	3.3	0.47	0.86	50.5
3	R2	6	16.7	0.085	13.4	LOS B	0.4	3.3	0.47	0.86	50.1
Approach		82	12.8	0.085	10.6	LOS B	0.4	3.3	0.47	0.86	50.5
East: R580											
4	L2	122	8.6	0.070	5.6	LOS A	0.0	0.0	0.00	0.57	53.2
5	T1	200	58.9	0.142	0.0	LOS A	0.0	0.0	0.00	0.00	60.0
Approach		322	39.9	0.142	2.2	NA	0.0	0.0	0.00	0.22	57.2
West: R580											
11	T1	259	45.5	0.140	0.1	LOS A	0.1	1.4	0.06	0.05	59.2
12	R2	20	15.8	0.140	7.0	LOS A	0.1	1.4	0.09	0.06	56.2
Approach		279	43.4	0.140	0.6	NA	0.1	1.4	0.06	0.05	59.0
All Vehicles		683	38.1	0.142	2.5	NA	0.4	3.3	0.08	0.22	57.0

Intersection 3: R580 and Access (AM Peak)



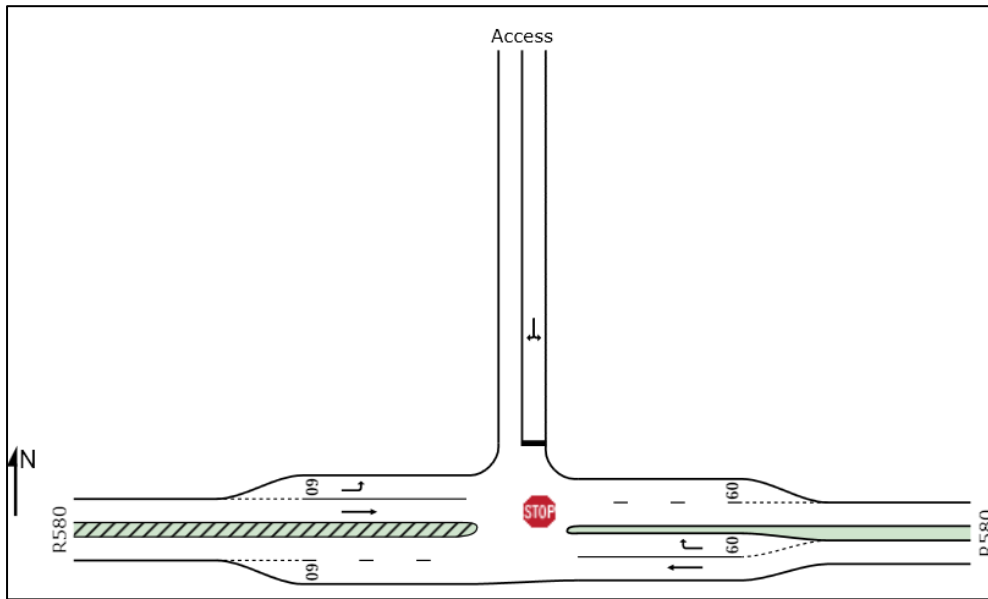
MOVEMENT SUMMARY

STOP Site: Intersection 3: R580 and Access (Horizon Year) AM

AM Horizon year
Stop (Two-Way)

Movement Performance - Vehicles											
Mov ID	ODMo v	Demand Flows Total	Flows HV %	Deg. Satn v/c	Average Delay sec	Level of Service	95% Back of Queue Vehicles	Distance m	Prop. Queued	Effective Stop Rate per veh	Average Speed km/h
East: R580											
5	T1	136	44.0	0.090	0.0	LOS A	0.0	0.0	0.00	0.00	60.0
6	R2	25	100.0	0.033	8.2	LOS A	0.1	1.5	0.42	0.64	49.8
Approach		161	52.8	0.090	1.3	NA	0.1	1.5	0.07	0.10	58.1
North: Access											
7	L2	25	100.0	0.083	15.5	LOS C	0.4	4.7	0.60	0.95	46.6
9	R2	13	100.0	0.083	18.1	LOS C	0.4	4.7	0.60	0.95	46.4
Approach		38	100.0	0.083	16.3	LOS C	0.4	4.7	0.60	0.95	46.6
West: R580											
10	L2	13	100.0	0.012	6.1	LOS A	0.0	0.0	0.00	0.57	51.6
11	T1	320	8.0	0.173	0.0	LOS A	0.0	0.0	0.00	0.00	60.0
Approach		333	11.5	0.173	0.2	NA	0.0	0.0	0.00	0.02	59.6
All Vehicles		532	30.3	0.173	1.7	NA	0.4	4.7	0.06	0.11	58.0

Intersection 3: R580 and Access (PM Peak)



MOVEMENT SUMMARY

STOP Site: Intersection 3: R580 and Access (Horizon Year)

PM Horizon year
Stop (Two-Way)

Movement Performance - Vehicles											
Mov ID	ODMo v	Demand Flows Total	Flows HV %	Deg. Satn v/c	Average Delay sec	Level of Service	95% Back of Queue Vehicles	Distance m	Prop. Queued	Effective Stop Rate per veh	Average Speed km/h
East: R580											
5	T1	174	21.8	0.102	0.0	LOS A	0.0	0.0	0.00	0.00	60.0
6	R2	61	100.0	0.075	7.9	LOS A	0.3	3.5	0.39	0.64	50.0
Approach		235	42.2	0.102	2.1	NA	0.3	3.5	0.10	0.17	57.0
North: Access											
7	L2	61	100.0	0.389	13.0	LOS B	2.3	29.8	0.51	1.03	45.8
9	R2	128	100.0	0.389	19.6	LOS C	2.3	29.8	0.51	1.03	45.6
Approach		189	100.0	0.389	17.5	LOS C	2.3	29.8	0.51	1.03	45.7
West: R580											
10	L2	128	100.0	0.118	6.1	LOS A	0.0	0.0	0.00	0.57	51.5
11	T1	97	19.6	0.056	0.0	LOS A	0.0	0.0	0.00	0.00	60.0
Approach		225	65.4	0.118	3.5	NA	0.0	0.0	0.00	0.32	54.8
All Vehicles		649	67.1	0.389	7.1	NA	2.3	29.8	0.19	0.47	52.5