

# Notice of application for an Environmental Authorisation and Water Use Licence for the proposed God's Window Skywalk Project

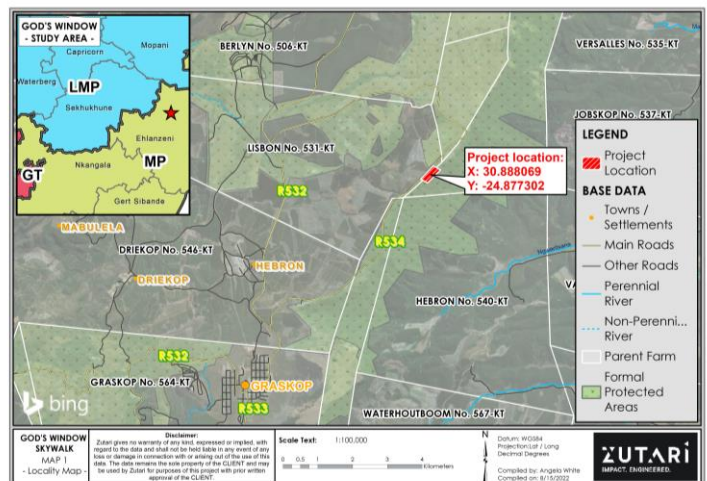
## PROJECT DESCRIPTION

Mapulana Canyon (Pty) Ltd, the Applicant, in partnership with the Mpumalanga Tourism and Parks Agency (MTPA) via a Public Private Partnership Agreement intends to develop a new state of the art tourist facility at God's Window. The development will include (but is not limited to) a skywalk, a sky bridge, restaurants and dining areas, an auditorium, administrative offices and the upgrading of existing walkways. God's Window is in the Blyde River Canyon Nature Reserve, which is managed by the MTPA since it is a Protected Area. The land of the entire Reserve has been claimed by four communities. The claimant communities are represented by four Communal Property Associations (CPAs) who, together, form the Blyde Valley 04 CPAs. The four claimant communities are represented by the Maorabjang, Moletele, Setlhare, and Mahubahuba a Bokone CPAs. It is proposed that the God's Window Skywalk Project is managed by a Special Purpose Vehicle involving the CPAs in partnership with the MTPA and other project developers. Thus, the abovementioned Public Private Partnership Agreement has been entered into with Motsamayi Tourism Group (Pty) Ltd for the design, finance, build, operation and transfer of the God's Window Skywalk.

Zutari (Pty) Ltd was appointed by Mapulana Canyon as the independent Environmental Assessment Practitioner (EAP) to undertake a Basic Assessment and manage the applications for an Environmental Authorisation (EA) and Water Use Licence (WUL) for this project. These applications are required in terms of the National Environmental Management Act (Act No. 107 of 1998) (NEMA) and its EIA Regulations (Government Notices [GN] R982, R983 and R985 of 2014 as amended in 2017), and the National Water Act (Act No. 36 of 1998) (NWA), respectively.

## LOCATION

The project is proposed at God's Window on the remainder of the farms De Houtbosch 503 KT and Portion 2 of the farm Lisbon 531 KT. This is in the Thaba Chweu Local Municipality in the Ehlanzeni District Municipality of the Mpumalanga Province.



## LISTED ACTIVITIES

No.	Listed activity
<b>GN R983 of 2014 (Basic Assessment)</b>	
12	Infrastructure, dams and weirs with a physical footprint of 100 square metres or more within 32 m of a watercourse.
19	The infilling or depositing, or the dredging, excavation, removal or moving of soil, sand, pebbles, or rock from a watercourse.
25	Treatment of effluent, wastewater or sewage.
27	The clearance of indigenous vegetation.
30	Any process or activity identified in terms of section 53(1) of the National Environmental Management: Biodiversity Act.
<b>GN R985 of 2014 (Provincial Basic Assessment)</b>	
10	Infrastructure for storage and handling of a dangerous good within a protected area.
14	Dams, weirs, infrastructure or structures within 32 m of a watercourse, inside a protected area.
<b>National Water Act (Act No. 36 of 1998) (NWA)</b>	
21(a)	Taking water from a water resource.
21(b)	Storage of water.
21(c)	Impeding or diverting the flow of water in a watercourse.
21(f)	Discharging waste or water containing waste into a water resource.
21(i)	Altering the beds, banks, course or characteristics of a watercourse.

## HOW TO GET INVOLVED

If you would like to register as an Interested and Affected Party (I&AP) to receive information, if you want to comment on the project, or if you have any questions, please contact us via any of the following channels:

✉	PPP@zutari.com
☎	+27 12 427 2235
✉	PO Box 74381, Lynnwood Ridge, Pretoria, 0040

Should you wish to access the full Draft BAR and WULA report, please use the following link: <https://zutari.com/gods-window/>. Hardcopies of the reports can be viewed at Thaba Chweu Local Municipality Graskop Administration Unit; Bushbuckridge Tourism and Information Centre; and the God's Window security office.

# Tsebiošo ya kgopelo ya Bolaodi bja Tikologo le Laesense ya Tirišo ya Meetse bakeng sa Protšeke ye e šišintšwego ya Skywalk sa God's Window

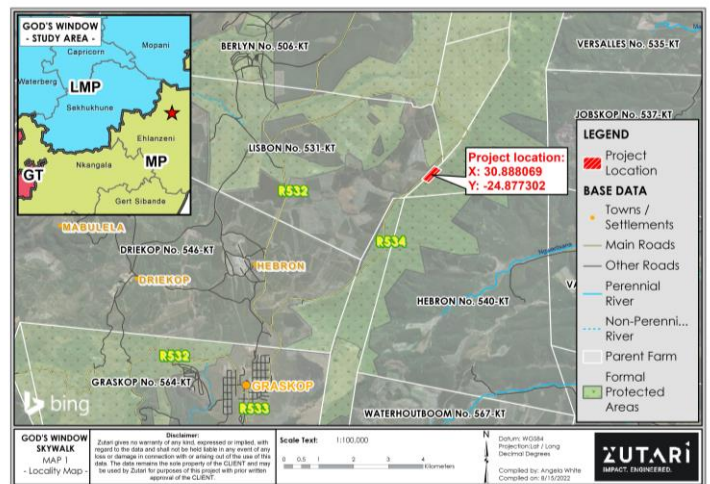
## TLHALOŠO YA PROTŠEKE

Mapulana Canyon (Pty) Ltd, yeo e šomago mmogo le Mokgatlo wa Diphaka le Mpumalanga Tourism (MTPA) go dirišwa Tumelelano ya Tšhomišanommogo ya Setšhaba le Praebete e ikemišeditše go hlama lefelo la bokgabo bja pušo bja go thora kua God's Window. Tlhabollo ye e tla akaretša (eupša ga ya lekanyetšwa go) skywalk, leporogo la lefaufaug, mabenkele a dijo le mafelo a go iketla, holo, diofisi tša bolaodi gotee le go kaonefatša ditsela tšeo go sepelwago go tšona. God's Window e ka gare ga Blyde River Canyon Nature Reserve, yeo e laolwago ke MTPA ka ge e le Lefelo leo le šireleditšwego. Naga ya Resefe ka moka e nyakwa ke metse e mene. Metse yeo e nyakago naga e emelwa ke mekgatlo e mene ya Communal Property Associations (CPAs) yeo ka moka ga yona e bopago Blyde Valley 04 CPAs. Metse e mene yeo e nyakago naga e emelwa ke Maorabjang, Moletele, Setlhare, le Mahubahuba a Bokone CPAs. Go šišintšwe gore Protšeke ya Skywalk sa God's Window se laolwe ke Sefatanaga sa Morero o Kgethegilego woo o akaretšago CPAs yeo e šomago mmogo le MTPA gotee le bahlami ba bangwe ba protšeke. Ka go realo, tumelelano yeo go boletšwego ka yona ka mo godimo ya Setšhaba le Praebete e tsentšwe ka go Motsamayi Tourism Group (Pty) Ltd bakeng sa bokgabo, tša ditshelete, go aga, go šoma le go romelwa ga Skywalk sa God's Window.

Zutari (Pty) Ltd e kgethilwe ke Mapulana Canyon bjalo ka Modiriši wa Tekolo ya Tikologo yo a ikemetšego (EAP) go swaragana le Tekolo ya Motheo le go laola dikgopelo bakeng sa Bolaodi bja Tikologo (EA) le Laesense ya Tirišo ya Meetse (WUL) mabapi le protšeke ye. Dikgopelo tše di a nyakega ka go dumelelana le Molao wa Taolo ya Tikologo ya Bosetšhaba (Molao wa bo. 107 wa 1998) (NEMA) gotee le Melao ya yona ya EIA (Ditsebišo tša Pušo [GN] R982, R983 le R985 wa 2014 ka ge o fetotšwe ka 2017), gotee le Molao wa Meetse a Bosetšhaba (Molao wa bo. 36 wa 1998) (NWA), ka go latelana.

## LEFELO

Protšeke ye e šišintšwe kua God's Window go polase ye e šetšego ya De Houtbosch 503 KT le Karolo ya 2 ya polase ya Lisbon 531 KT. Wo ke Mmasepala wa Selegae wa Thaba Chweu ka Mmasepaleng wa Selete wa Ehlanzeni wa Profense ya Mpumalanga.



## MEDIRO YEO E LOKOLODITŠWEGO

Nomoro	Modiro wo o lokoloditšwego
<b>GN R983 wa 2014 (Tekolo ya Motheo)</b>	
12	Infrastraktšha, matamo le matangwana a kgauswi le noka a nago le sebopego sa mohlala wa leoto wa diskweremitha tše 100 goba go feta moo e bile o le mo e ka bago 32 m go tsejana ya meetse.
19	Go tswalelwa goba go khupetšwa, goba go tlošwa, go epša, go tlošwa goba go sepedišwa ga mobu, santa, maswikana, goba leswika go tšwa tsejaneng ya meetse.
25	Go hlwekišwa ga meetse a ditšhila goba a kelelatšhila.
27	Go tlošwa ga dibjalo tša setlogo.
30	Tshepetšo goba mošongwana wo mongwe le wo mongwe go ya ka karolo ya 53(1) ya Taolo ya Tikologo ya Bosetšhaba: Molao wa Mehuta ya Diphedi ka Moka.
<b>GN R985 wa 2014 (Tlhahlobo ya Motheo ya Profense)</b>	
10	Meago ya boloka le go swaragana ga dithoto tše kotsi ka gare ga lefelo leo le šireleditšwego.
14	Matamo, matangwana a kgauswi le noka, meago goba dibopego tšeo di lego 32 m go tsejana ya meetse, ka gare ga lefelo leo le šireleditšwego.
<b>Molao wa Meetse a Bosetšhaba (Molao wa bo. 36 wa 1998) (NWA)</b>	
21(a)	Go tšea meetse go tšwa go mothopong wa meetse.
21(b)	Bobolokelo bja meetse.
21(c)	Go thibela goba go arošwa ga kelelo ya meetse tsejaneng ya meetse.
21(f)	Go tšhela ditšhila goba meetse ao a nago le ditšhila ka gare ga methopo ya meetse.
21(i)	Go fetošwa ga mariba le dipanka tša ditsejana tša meetse.

## KA MOO O KA KGATHAGO TEMA

Ge e ba o nyaka go ingwadiša bjalo ka Mokgatlo wo o Amegago gape o na le Kgahlego (I&AP) gore o hwetše tshedimošo, ge e ba o nyaka go tsenya ditlhalošo mo protšekeng ye, goba ge e ba o na le dipotšišo le ge e le dife, o kgopelwa go ikgokaganye le rena ka ditsela tše di latelago

✉	PPP@zutari.com
☎	+27 12 427 2235
✉	PO Box 74381, Lynnwood Ridge, Pretoria, 0040

Ge e ba o nyaka go hwetša Kakanywa ya Pego ya Tekolo ya Motheo e feletšego, o kgopelwa go diriša linki e latelago: <https://zutari.com/gods-window/>. Dikopi tša dipego di ka bonwa kua Mmasepala wa Selegae wa Thaba Chweu, Lekala la Taolo la Graskop Administration Unit; Bushbuckridge Tourism le Lefelo la Tshedimošo; le God's Window Security Office.



# Kennisgewing van aansoek vir Omgewingsmagtiging en Watergebruikslisensie vir die voorgestelde God's Window Lugwandeling Projek

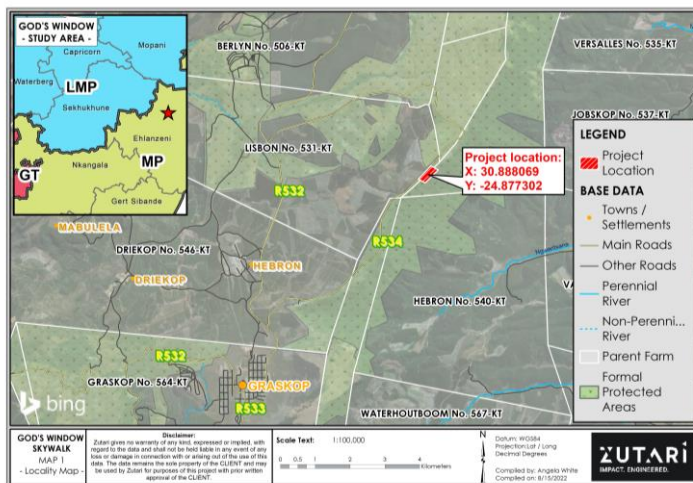
## PROJEK BESKRYWING

Die Aansoeker, Mapulana Canyon (Edms) Bpk, in vennootskap met die Mpumalanga Toerisme- en Parke- Agentskap (MTPA) via 'n Publieke Privaat Vennootskapsooreenkoms, beoog om 'n nuwe moderne toeristefasiliteit by God's Window te ontwikkel. Die ontwikkeling sluit in (maar nie beperk tot) 'n lugwandeling, lugbrug, restaurante en eet areas, auditorium, administratiewe kantore en die opgradering van bestaande wandelpaaië. God's Window is in die Blyderivier Canyon Natuurresewaat geleë, wat deur die MTPA bestuur word aangesien dit 'n Beskermd gebied is. Die grond van die hele resewaat is deur vier gemeenskappe geëis, en word verteenwoordig deur vier Kommunale Eiendomsverenigings (KEV's) wat saam, die Blyde Vallei 04 KEV's vorm. Die vier eisersgemeenskappe word deur die Maorabjang, Moletele, Setlhare en Mahubahuba a Bokone KEV's verteenwoordig. Daar word voorgestel dat die God's Window Lugwandeling-projek, deur 'n Spesiale Doelvoertuig wat die KEV's in vennootskap met die MTPA en ander projekontwikkelaars bestuur word. Die bogenoemde Openbare Privaat Vennootskapsooreenkoms is dus met Motsamayi Toerisme Groep (Edms) Bpk aangegaan vir die ontwerp, finansiering, bou, bedryf en oordrag van die God's Window Lugwandeling.

Mapulana Canyon het Zutari (Edms) Bpk as Onafhanklike Omgewingskonsultant aangestel om 'n Basiese Invloedbepalingsproses te onderneem tesame met die aansoek vir Omgewingsmagtiging en Watergebruikslisensie vir hierdie projek. Hierdie aansoek word vereis ingevolge die Wet op Nasionale Omgewingsbestuur (Wet Nr. 107 van 1998, soos gewysig) en sy OIB-regulasies (GK R982, R983 en R985 van 2014 soos gewysig in 2017), en die Nasionale Waterwet (Wet Nr. 36 van 1998), onderskeidelik.

## LIGGING

Die projek word voorgestel by God's Window op plase De Houtbosch (Restant van Plaas 503 KT) en Lisbon (Gedeelte 2 van Plaas 531 KT). Dit val binne die Thaba Chweu Plaaslike Munisipaliteit, Ehlanzeni Distriksmunisipaliteit in die Mpumalanga Provinsie.



## GELYSDE AKTIWITEITE

Nr.	Gelyste Aktiwiteite
<b>GK R983 van 2014 (Basiese Assessering)</b>	
12	Infrastruktuur, damme en keerwalle met 'n fisiese voetspoor van 100 vierkante meter of meer binne 32 m van 'n waterloop.
19	Die opvulling of afsetting, of die baggerwerk, uitgraving, verwydering of verskuiwing van grond, sand, klippies of rots uit 'n waterloop.
25	Behandeling van uitvloei, afvalwater of riool.
27	Die opruiming van inheemse plantegroei.
30	Enige proses of aktiwiteit geïdentifiseer ingevolge artikel 53(1) van die Wet op Nasionale Omgewingsbestuur: Biodiversiteit.
<b>GK R985 van 2014 (Provinsiale Basiese Assessering)</b>	
10	Infrastruktuur vir berging en hantering van 'n gevaarlike goed binne 'n beskermd gebied.
14	Damme, keerwalle, infrastruktuur of strukture binne 32 m van 'n waterloop, binne 'n beskermd gebied.
<b>Nasionale Waterwet (Wet Nr. 36 van 1998)</b>	
21(a)	Die neem van water uit 'n waterbron.
21(b)	Berging van water.
21(c)	Die vloei van water in 'n waterloop belemmer of herlei.
21(f)	Die storting van afval of water wat afval bevat in 'n waterhulpbron.
21(i)	Verandering van die beddings, walle, loop of kenmerke van 'n waterloop.

## HOE OM BETROKKE TE RAAK

Indien u as Belanghebbende en Geaffekteerde Party (B&GP) wil registreer om inligting te ontvang, kommentaar wil lewer, of enige vrae het aangaande die projek, kontak ons gerus via enige van die volgende kanale:

✉	PPP@zutari.com	'n Digitale kopie van die verslag kan verkry word deur die volgende skakel te volg: <a href="https://zutari.com/gods-window/">https://zutari.com/gods-window/</a> . Hardekopieë van die verslae sal by die Thaba Chweu Plaaslike Munisipaliteit, Graskop Administratiewe Eenheid; Bosbokrand Toerisme en Inligtingsentrum; en God's Window sekuriteitskantoor beskikbaar wees.
☎	+27 12 427 2235	
✉	Posbus 74381, Lynnwood Ridge, Pretoria, 0040	