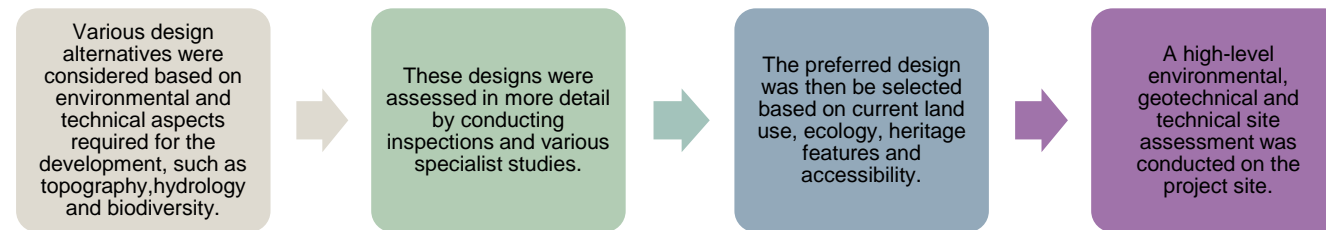


6. What is a Basic Assessment process?

- ▶ This project requires an EA in terms of NEMA and the EIA Regulations.
 - ▶ Once an application for EA has been made, the BA commences and focuses on a broad range of issues. The BA Report (BAR) must provide sufficient information to facilitate an understanding of these issues.
 - ▶ Specialist input is used to identify the impacts, with ecological (flora, fauna and wetlands), social, heritage and traffic specialists all forming part of the team.
- ▶ The goal of the BA process is to:
 - Assess activities of which the impacts are generally known and manageable
 - Consider the potential environmental impacts of the proposed activity
 - Assess possible mitigation measures
 - Assess whether there are any significant issues or impacts that might require further investigation
 - Invite public comment and input on the proposed project

7. What has been done to date?



8. Why are we sending you this notice?

A development like this requires permission from the Competent Authority to proceed, and anyone who is interested in or potentially affected by the project can take part in the regulatory process.

- ▶ Zutari (Pty) Ltd was appointed by Mapulana Canyon as the independent Environmental Assessment Practitioner (EAP) to manage the new application for an EA and Water Use License (WUL) for this project.
 - ▶ This includes the Public Participation Process (PPP), in accordance with Chapter 6 of the EIA Regulations.
 - ▶ The PPP is crucial, as the public can help us to identify the possible positive and negative impacts the project might have on people and the environment.
- ▶ A BAR is compiled using all the specialist studies and various other pertinent project information and this report is made available to the I&APs for a period of 30 calendar days. This is referred to as the “public comment period”.
 - ▶ All comments received during the public comment period will be captured in a Comments and Response Report (CRR) which will be incorporated into the final BAR.
 - ▶ The Competent Authority, which is the Mpumalanga Department of Agriculture, Rural Development and Environmental Affairs, must give or deny permission for the project after they have assessed the BAR, specialist reports, and comments received from I&APs like yourself.

9. How to get involved

If you would like to register as an Interested and Affected Party (I&AP) to receive information, if you want to comment on the project, or if you have any questions, please contact us via any of the following channels:


| | | | |
|---|----------------|---|--|
| ✉ | PPP@Zutari.com | ✉ | PO Box 74381, Lynnwood Ridge, Pretoria, 0040 |
| ☎ | 012 427 2235 | | |

Should you wish to access the full Draft BAR and WULA report, please use the following link: <https://zutari.com/gods-window/>. Please submit your comments no later than Monday, 19 September 2022 for the Draft BAR and no later than Monday, 17 October 2022 for the water uses.

Background Information Document for the God's Window Skywalk Project

1. What is planned?

Mapulana Canyon (Pty) Ltd, in partnership with the Mpumalanga Tourism and Parks Agency (MTPA) via a Public Private Partnership Agreement, intends to develop a new state-of-the-art tourist facility at God's Window.

The development will include (but is not limited to) a skywalk, a sky bridge, restaurants and dining areas, an auditorium, administrative offices and the upgrading of existing walkways. 

The project entails the development of a tourism facility at God's Window. The project will comprise an area of approximately 25 000 m², consisting of a lower and upper level. The tourism facility includes the following main attractions, spaces and infrastructure:

- ▶ A visitor's centre including:
 - Restaurants, dining areas, cafes and cocktail bars;
 - A museum area;
 - Reception lobbies, courtyards and foyers;
 - An auditorium and conference facilities;
 - Lecture rooms;
 - Formalised craft market area;
 - Ablution facilities for staff and guests;
 - Administrative offices.
- ▶ Skywalk viewing area;
- ▶ A skybridge;
- ▶ A “zero gravity” room;
- ▶ Stormwater attenuation pond (to manage stormwater run-off and to prevent erosion);
- ▶ An onsite Wastewater Treatment Package Plant;
- ▶ Formalised parking area (to accommodate light vehicles, buses and taxi shuttles); and
- ▶ Upgrading of the existing pathways.

The facility will also include technical spaces such as IT server rooms, electrical rooms, as well as fire and wet services.

2. Where is it planned?

The project is proposed at God's Window on the Remainder of the farm De Houtbosch 503 KT and Portion 2 of the Farm Lisbon 531 KT. This is in the Thaba Chweu Local Municipality in the Ehlanzeni District Municipality of the Mpumalanga Province.

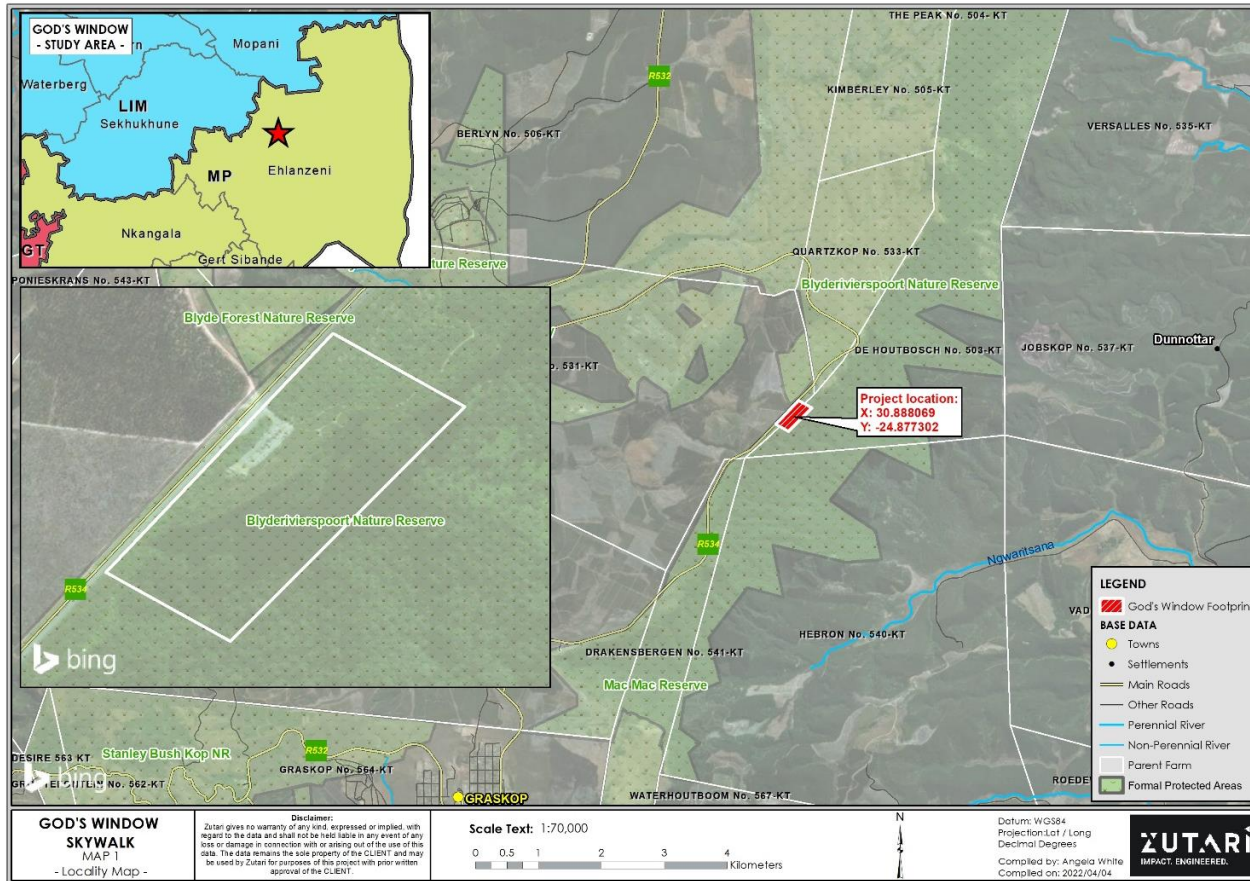


Figure 1 | The location of the proposed project site at God's Window

3. Who is undertaking this Project?

- ▶ God's Window is in the Blyde River Canyon Nature Reserve, which is managed by the MTPA since it is a Protected Area.
- ▶ The land of the entire Reserve has been claimed by four communities.
- ▶ The claimant communities are represented by four Communal Property Associations (CPAs) who, together, form the Blyde Valley 04 CPAs.
- ▶ The four claimant communities are represented by the Maorabjang, Moletele, Setlhare, and Mahubahuba a Bokone CPAs.
- ▶ It is proposed that the God's Window Skywalk Project is managed by a Special Purpose Vehicle involving the CPAs in partnership with the MTPA and other project developers.
- ▶ Thus, the abovementioned Public Private Partnership Agreement has been entered into with Motsamayi Tourism Group (Pty) Ltd for the design, finance, build, operation and transfer of the God's Window Skywalk.



4. Listed activities

The following Listed Activities will be applied for in terms of the National Environmental Management Act (Act No. 107 of 1998) (NEMA) and its Environmental Impact Assessment (EIA) Regulations (GN R 982 of 2014 as amended), and water uses in terms of the National Water Act (Act No. 36 of 1998).

| No. | Listed activity |
|--|--|
| GN R983 of 2014 (Basic Assessment [BA]) | |
| 12 | Infrastructure, dams and weirs with a physical footprint of 100 m ² or more within 32 m of a watercourse. |
| 19 | The infilling or depositing, or the dredging, excavation, removal or moving of soil, sand, pebbles, or rock from a watercourse. |
| 27 | The clearance of indigenous vegetation. |
| 48 | Expansion of (i) infrastructure or structures where the physical footprint is expanded by 100 square metres or more where such expansion occurs (a) within a watercourse; or (c) if no development setback exists, within 32 metres of a watercourse, measured from the edge of a watercourse. |
| GN R985 of 2014 (Provincial BA) | |
| 12 | The clearance of indigenous vegetation in Mpumalanga within a critically endangered or endangered ecosystem, within critical biodiversity areas identified in bioregional plans, or on land zoned open space, conservation or equivalent. |
| 14 | Dams, weirs, infrastructure or structures within 32 m of a watercourse, inside a protected area. |
| National Water Act (Act No. 36 of 1998) | |
| 21(a) | Taking water from a water resource. |
| 21(b) | Storage of water. |
| 21(c) | Impeding or diverting the flow of water in a watercourse. |
| 21(f) | Discharging waste or water containing waste into a water resource. |
| 21(i) | Altering the beds, banks, course or characteristics of a watercourse. |

5. I heard of this project years ago. Why is this process happening again?

The MTPA was granted an Environmental Authorisation (EA) by the Department of Environmental Affairs (now, Department of Forestry, Fisheries and the Environment) to develop the God's Window Skywalk project on 5 June 2015 (ref. no. 14/12/16/3/3/88). Due to various delays in the start of construction, the finalisation of the Public Private Partnership Agreement and change in architectural designs, and since the EIA Regulations were amended during this period, the project needs to undergo a new EA process to ensure it is valid, applicable and addresses all current impacts and aspects related to the proposed development.

6. Tekolo ya Motheo ke eng?

- ▶ Protšeke ye e nyaka EA go ya mabaka a NEMA le Melawana ya EIA.
- ▶ Ge kgopelo ya EA e dirilwe, BA e a thoma ke moka ya lebiša tlhokomelo mathata ao a fapafapanego ka go naba ga yona. Pego ya Tlhahlobo ya Motheo (BAR) e swanetše go fana ka tshedimošo ye e lekanego go sepediša kwešišo ya ditaba tše.
- ▶ Tsebo ya ditsebi e šomišitšwe go bontša kamego, ditsebi tša diphoofolo le tikologo, tša leago, setšo ga mmogo le dinamelwa ba bile maloko a sehlopa sa ditsebi tšeo di šomišitšwego.

Morero wa di tšepedišo tša BA ke go:

- Lekola mešongwana yeo ditlamorago tša gona di tsebegago ebile di laolegago
- Naganišiša ka ditlamorago tšeo di ka amago tlhago ba baka la modiro wo o šišintšwego
- Lekola mekgwa ya tharollo
- Lekola ge e ba go e na le mathata a magolo goba ditlamorago tšeo di ka nyakago go nyakišišwa go ya pele.
- Laletša setšhaba gore se swayeswaye ebile se fe dikgopolo ka protšeke ye e akantšwego.

7. Ke eng seo se dirilwego go fihla gonabjale?

Go ile gwa naganelwa meakanyetšo ye e fapafapanego go ithekilwe ka dilo tšeo di nyakagago tša tikologo le tša theknolotšhi bakeng sa tlhabollo tše bjalo ka thopokrafi, tšweletšo le tšepedišo ya meetse lefaseng gotee le mehuta ka moka ya diphele.



Meakanyetšo ye e ile ya hlalobja ka mo go tšeneletšego ka go dirišwa ga dithuto tše di fapafapanego tša ditsebi.



Moakanyetšo woo o ratilwego o ile wa kgethwa go ithekilwe ka tirišo ya naga ya gonabjale, diphele le tikologo ya tšona, dikarolo tša setšo le go hwetšagala ga tšona.



Tlhahlobo ya maemo a godimo ya tikologo, ya tša theknolotšhi ya boentšhinere gotee le lenaneo la sethekniki la mafelo di dirilwe lefelong la protšeke.

8. Ke ka baka lang re go romela tsebišo ye?

Tlhabollo ya mohuta wo e hloka tumelelo go tšwa go Molaodi yo a Swanelegago gore e tšwele pele, motho mang kapa mang wo a lego kgahlegelago le protšeke a ka tšea karolo tšepedišong ya melao.

- ▶ Zutari (Pty) Ltd e kgethilwe ke Mapulana Canyon bjalo ka Modiriši wa Tekolo ya Tikologo yo a ikemetšego (EAP) go swaragana le kgopelo e mpšha bakeng sa Laesense ya Tekolo ya Tikologo le Tirišo ya Meetse (WUL) mabapi le protšeke ye.
- ▶ Se se akaretša go Tšepedišo ya go kgatha Tema ga Setšhaba (PPP), ka go dumelelana le Kgaolo 6 ya Melawana ya EIA.
- ▶ Tšepedišo ya go Tšea Karolo Phatlalatša e bohlokwa ka ge setšhaba se ka kgona go re thuša go lemoga ditlamorago tše dibotse le tše mpe tšeo di ka bago gona bathong le tikologong.

- ▶ BAR e kopantšhitšwe ka morago ga go dirišwa dipolelo tša ditsebi gotee le tshedimošo tše maleba mabapi le projeke. Pego ye e ka hwetša ke I&AP ka nako ye e lekanago matšatši a 30.
- ▶ Ye e bitšwa gore ke “nako ya ditshwayotshwayo tša setšhaba”.
- ▶ Ditshwayotshwayo ka moka tšeo di hweditšwego nakong ya ditshwayotshwayo tša setšhaba di tla tsenywa go Pego ya Ditshwayotshwayo le Dikarabo (CRR) yeo e tlogo go kopanywa le BAR ya mafelelo.
- ▶ Molaodi yo Swanelegago e lego Kgoro ya Temo, Tlhabollo ya Dinagamagae le Merero ya Tikologo, ba swanetše go fana ka tumelelo goba go gana ka yona bakeng sa protšeke ka morago ga ge ba dirile Tekolo ya Motheo, ba hweditše dipego tša ditsebi, gotee le go hwetša ditlhalošo tšeo di tšwago go I&AP go swana le wena.

9. Ka moo o ka tšea go karolo

Ge o nyaka go ingwadiša bjalo ka Motho wa goba le Kgahlego le Kamego (I&AP) gore o hwetše tshedimošo, ge e ba o nyaka go tsentšha diswayaswayo mo projekeng ye, goba ge o na le dipotšišo, re kgopela o ikgoganyane le rena :

| | | | |
|--|----------------|--|--|
| | PPP@Zutari.com | | PO Box 74381, Lynnwood Ridge, Pretoria, 0040 |
| | 012 427 2235 | | |

Ge e ba o nyaka go hwetša BAR, o kgopelwa go diriša linki ye e latelago: <https://zutari.com/gods-window/>

O kgopelwa go romelwa diswayaswayo tša gago e sego ka morago ga Montaga wa di 19 September 2022 go Draft ya Pego ya Tlhahlobo ya Motheo gomme bakeng sa tirišo ya meetse e se romelwe ka morago ga Laboraro wa di 17 October 2022. Dikopi tša dipego di ka bonwa kua Mmasempala wa Selegae wa Thaba Chweu, Lekala la Taolo la Graskop Administration Unit; Bushbuckridge Tourism le Lefelo la Tshedimošo, le God's Window Security Office.

Tokomane ya Tshedimošo ya Botšo bakeng sa protšeke ya God's Window Skywalk

1. Ke eng seo se rulagantšwego?

Mapulana Canyon (Pty) Ltd, yeo e šomago mmogo le Mokgatlo wa Diphaka le Mpumalanga Tourism (MTPA) go dirišwa Tumelelano ya Tšhomišanommogo ya Setšhaba le ya Praebete e ikemišeditše go hlama lefelo la bokgabo bja pušo bja boeti kua God's Window.

Tlhabollo ye e tla akaretša (eupša ga ya lekanyetšwa go) tsela ya go sepela ka maoto lefaufau, leporogo la lefaufau, mabenkele a dijo le mafelo a go iketla, holo, diofisi tša bolaodi gotee le go kaonafatša ditsela tšeo go sepelwago go tšona.



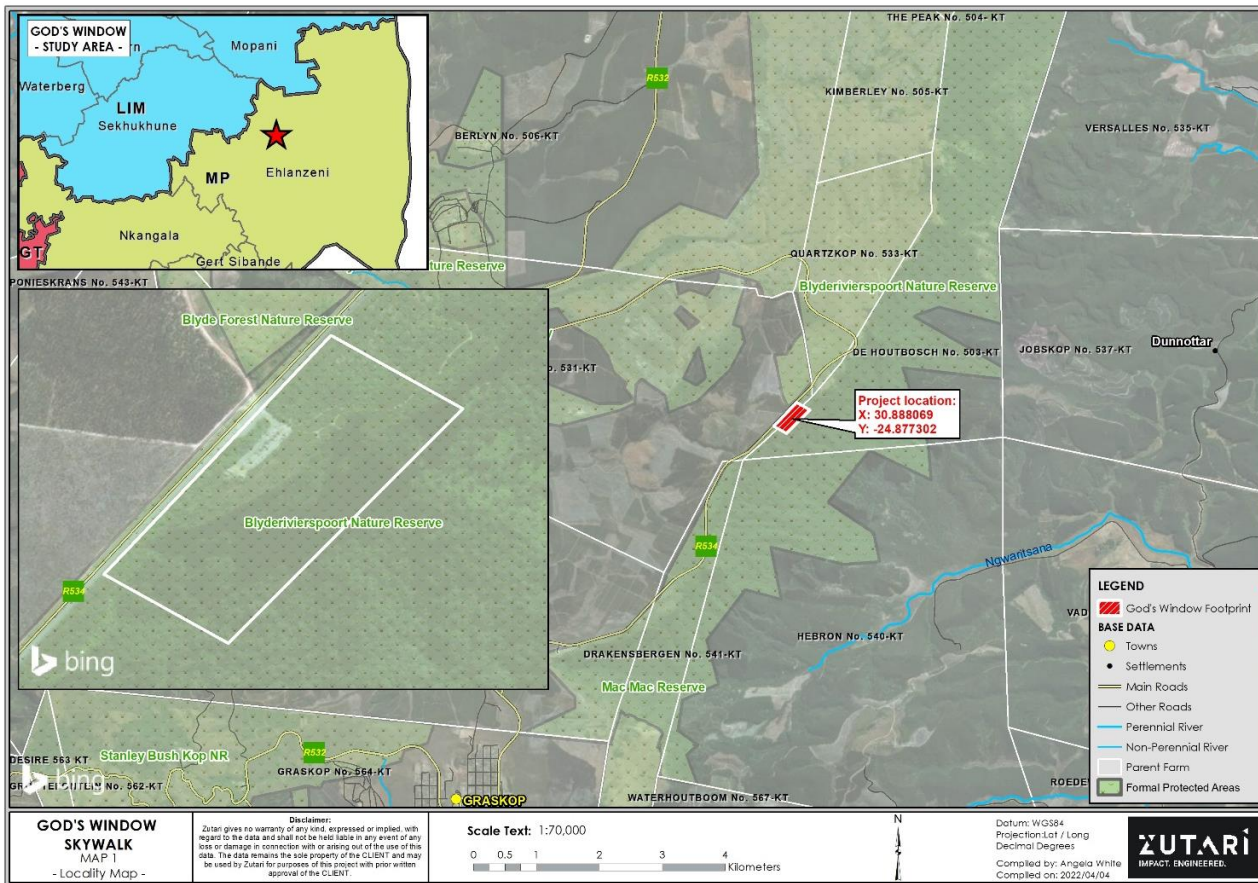
Protšeke e akaretša go tlhabollwa ga lefelo la boeti kua God's Window. Protšeke ye e tla lekana lefelo la mo e ka bago 25 000 m², leo le nago ka godimo le ka fase. Senolofatši sa boeti se akaretša dilo tšeo di gogago šedi tša motheo, dikgoba le meago:

- ▶ Lefelo la baeng leo le akaretšago:
 - Mabenkele a dijo, mafelo a go iketla, dikhefi le dipara tša di khokhtheile;
 - Lefelo la museamo;
 - Lefelo la bogorogelo, mabala le difoya;
 - Holo le mafelo a dikhonferense;
 - Diphapoši tša borutelo;
 - Lefelo leo le rulagantšwego la mmara ka la bokgabo;
 - Lefelo la bohlapelo le dintwana bakeng sa bašomi le baeng;
 - Diofisi tša bolaodi.
- ▶ Lefelo la go bogela la Skywalk;
- ▶ Leporogo la lefaufau
- ▶ Phapoši ya “go hloka matlakgogedi;”
- ▶ Letangwana la go boloka le go sepediša meetse a pula (go laola meetse a pula ao a elago le go phema go gogolega ga mabu);
- ▶ Polante yeo e Hlwekišago Meetse a Ditšhila yeo e lego lefelong leo;
- ▶ Lefelo la go phaka dikoloi leo le rulagantšwego (go paka dikoloi tše dinyenyane, dipese le dithekisi tšeo di rwalago batho); le
- ▶ Go mpshafatša ditsela tša go sepela tšeo di lego gona.

Lefelo le tla akaretša mafelo a tša sethekniki a bjalo ka diphapoši tša seba tša IT, diphapoši tša mohlagase, gotee le ditirelo tša mollo le meetse.

2. E rulagantšwe kae?

Protšeke ye e šišintšwe kua God's Window go polaseng ye e Šetšego ya De Houtbosch 503 KT le Karolo ya 2 ya Polase ya Lisbon 531 KT. Ye e ka Mmasepala wa Selegae wa Thaba Chweu ka Mmasepaleng wa Selete wa Ehlanzeni wa Profense ya Mpumalanga.



Palo 1 | Lefelo leo le šišintšwego la lefelo la ya protšeke kua God's Window

3. Ke mang yo a sepedišago Protšeke ye?

- ▶ God's Window e ka gare ga Blyde River Canyon Nature Reserve, yeo e laolwago ke MTPA ka ge e le Lefelo leo le Šireleditšwego.
- ▶ Naga ya Resefe ka moka e nyakwa ke metse e mene.
- ▶ Metse yeo e nyakago naga e emelwa ke mekgatlo e mene ya Communal Property Associations (CPAs) yeo ka moka ga yona e bopago Blyde Valley 04 CPAs.
- ▶ Metse ye mene yeo e nyakago naga e emelwa ke Maorabjang, Moletele, Sethlare, le Mahubahuba a Bokone CPAs.
- ▶ Go šišintšwe gore Protšeke ya Skywalk sa God's Window se laolwe ke Sefatanaga sa Morero o Kgethegilego woo o akaretšago CPAs yeo e šomago mmogo le MTPA gotee le bahlami ba bangwe ba projeke.
- ▶ Ka go realo, Tumelelano ya Tirišano ya Setšhaba le Praebete ya ka godimo yeo e tsenetšwego ka go Motsamayi Tourism Group (Pty) Ltd bakeng sa moakanyetšo, tša ditšhelete, go aga, go šoma le go romelwa ga Skywalk sa God's Window.



4. Mešongwana ye e lego lenaneong

Mešongwana ye e Lego Lenaneong e tla dirišwa ka go dumelelana le Molao wa Taolo ya Tikologo ya Bosetšhaba (Molao wa bo 107 wa 1998) (NEMA) Melao ya yona ya Tihahlobo ya Ditlamorago tša Tikologo (EIA) (GN R 982 wa 2014 ka ge o fetotšwe), gotee le tirišo ya meetse ka go dumelelana le Molao wa Meetse a Bosetšhaba (Molao wa bo 36 wa 1998).

| Nomoro | Mošongwana wo o lego lenaneong |
|---|--|
| GN R983 wa 2014 (Tekolo ya Motheo [BA]) | |
| 12 | Infrastraktšha, matamo le matangwana a kgauswi le noka a nago le sebopego sa mohlala wa leoto wa 100 m ² goba go feta moo e bile o le mo e ka bago 32 m go tsejana ya meetse. |
| 19 | Go tswalelwa goba go khupetšwa, goba go tlošwa, go epša, go tlošwa goba go sepedišwa ga mobu, santa, maswikana, goba leswika go tšwa tsejaneng ya meetse. |
| 25 | Go hlwekišwa ga meetse a ditšhila goba a kelelatšhila. |
| 27 | Go tlošwa ga dibjalo tša setlogo. |
| 30 | Modiro le ge e le ofe woo o hlalošwago ka go dumelelana le karolo 53(1) ya Taolo ya Tikologo ya Bosetšhaba: Molao wa Mehuta ya Diphedi ka Moka. |
| GN R985 wa 2014 (Tihahlobo ya Motheo [BA]) | |
| 10 | Infrastraktšha ya boloka le go swaragana ga dithoto tše kotsi ka gare ga lefelo leo le šireleditšwego. |
| 14 | Matamo, matangwana a kgauswi le noka, meago goba dibopego tšeo di lego 32 m go tsejana ya meetse, ka gare ga lefelo leo le šireleditšwego. |
| Molao wa Meetse a Bosetšhaba (Molao wa bo. 36 wa 1998) | |
| 21(a) | Go tšea meetse go tšwa mothopong wa meetse. |
| 21(b) | Bobolokelo bja meetse. |
| 21(c) | Go thibela goba go arošwa ga kelelo ya meetse tsejaneng ya meetse. |
| 21(f) | Go tšhela ditšhila goba meetse ao a nago le ditšhila ka gare ga methopo ya meetse. |
| 21(i) | Go fetotšwa ga mariba le dipanka tša ditsejana tša meetse. |

5. Ke kwele ka protšeke ye mengwageng ye e fetilego. Ke ka baka lang mogato wo o dirwa gape?

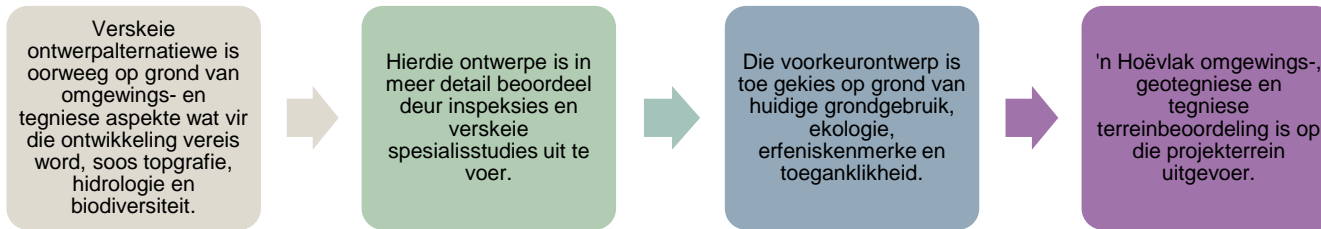
MTPA e filwe Taolo ya Tikologo (EA) ke Kgoro ya Merero ya Tikologo (gonabjale e bitšwa Kgoro ya Dithokgwa, Boreahlapi le Tikologo) go tlhabolla protšeke ya Skywalk sa God's Window ka di 5 Phupu 2015 (ref. no. 14/12/16/3/3/88). Ka baka la go diega ga modiro wa go aga mo go bakilwego ke dilo tša go fapana, go phethwa ga Tumelelano ya Tšhomišanommogo ya Setšhaba le Praebete gotee le diphetogo go tša dipolane tša moakanyetšo le gore Melao ya EIA e ile ya fetotšwa nakong yona ye, go nyakega gore protšeke e sepedišwa ka megato e meswa ya Tekolo ya Tikologo go kgonthišetša gore ke ya maswanedi, e a šoma le gore e šomana le ditlamorago gotee le dibopego tšeo di tswalanago le tlhabollo yeo e šišintšwego.

6. Wat is 'n Basiese Invloedbepalingsproses?

- ▶ Hierdie projek vereis OM ingevolge die WNOB en sy OIB-regulasies.
- ▶ Sodra 'n aansoek vir OM gemaak is, begin die BA en fokus op 'n wye reeks kwessies. Die BA-Verslag moet voldoende inligting verskaf om 'n begrip van hierdie kwessies te fasiliteer.
- ▶ Spesialis insette word gebruik om die impakte te identifiseer, met ekologiese (flora, fauna en vleilande), sosiale, erfenis- en verkeerspesialiste wat almal deel van die span vorm..

- ▶ Die doel van die BA-proses is om:
 - Evalueer aktiwiteite waarvan die impak algemeen bekend en hanteerbaar is
 - Oorweeg die potensiële omgewingsimpakte van die voorgestelde aktiwiteit
 - Evalueer moontlike versagtingsmaatreëls
 - Evalueer of daar enige beduidende kwessies of impakte is wat verder ondersoek kan vereis
 - Nooi publieke kommentaar en insette oor die voorgestelde projek

7. Wat is gedoen tot op hede?



8. Hoekom stuur ons vir jou hierdie kennisgewing?

'n Ontwikkeling soos hierdie vereis toestemming van die Bevoegde Owerheid om voort te gaan, en enige iemand wat belangstel in, of moontlik deur die projek geraak word, kan aan die reguleringsproses deelneem.

- ▶ **Zutari (Edms) Bpk is aangestel deur Mapulana Canyon as die Onafhanklike Omgewingskonsultant om die nuwe aansoek vir OM en Watergebruiklisensie (WGL) vir hierdie projek te behartig.**
- ▶ Dit sluit die Publieke Deelname Proses (PDP) in, in ooreenstemming met Hoofstuk van die OIB-regulasies.
- ▶ Die PDP is van kardinale belang, aangesien die publieke ons kan help om die moontlike positiewe en negatiewe impakte wat die projek op mense en die omgewing kan hê, te identifiseer.
- ▶ 'n BA-Verslag (BAV) word saamgestel met behulp van alle spesialisstudies en verskeie ander relevante inligting en

- hierdie verslag word vir 'n tydperk van 30 kalenderdae aan die B&GPe beskikbaar gestel.
- ▶ Dit word na verwys as die "publieke kommentaarperiode".
 - ▶ Alle kommentaar wat gedurende die publieke kommentaarperiode ontvang word, sal in 'n Kommentaar- en Reaksieverslag vasgelê word wat in die finale BA-verslag sal verskyn.
 - ▶ Die Bevoegde Owerheid, wat die Mpumalanga Department van Landbou, Landelike Ontwikkeling en Omgewingsake is, moet toestemming gee of weier nadat hulle die BAV, spesialisverslae en kommentaar ontvang het van B&GPe soos uself.

9. Hoe om betrokke te raak

Indien u as Belanghebbende en Geaffekteerde Party (B&GP) wil registreer om inligting te ontvang, kommentaar te lewer of enige vrae het aangaande die projek, kontak ons gerus via enige van die volgende kanale:

| | | | |
|---|----------------|---|--|
| ✉ | PPP@Zutari.com | ✉ | Posbus 74381, Lynnwood Ridge, Pretoria, 0040 |
| ☎ | 012 427 2235 | | |

Skriftelike kommentaar moet nie later as Maandag, 19 September 2022 vir die KOBV, en nie later as Maandag, 17 Oktober 2022 vir Watergebruike, ingedien word nie. 'n Digitale kopie van die verslag kan verkry word deur die volgende skakel te volg: <https://zutari.com/gods-window/>. Hardekopieë van die verslae sal by die Thaba Chweu Plaaslike Munisipaliteit, Graskop Administratiewe Eenheid; Bosbokrand Toerisme en Inligtingsentrum; en God's Window sekuriteitskantoor beskikbaar wees.

Agtergrond Inligtingsdokument vir die God's Window Lugwandelingsprojek

1. Wat word beplan?

Mapulana Canyon (Edms) Bpk, in vennootskap met die Mpumalanga Toerisme- en Parke- Agentskap (MTPA) via 'n Publieke Privaat Vennootskapsoreenkoms, beoog om 'n nuwe modern toeristefasiliteit by God's Window te ontwikkel.

Die ontwikkeling sluit in (maar nie beperk tot) 'n lugwandelings, lugbrug, restaurante en eet areas, auditorium, administratiewe kantore en die opgradering van bestaande wandelpaie.



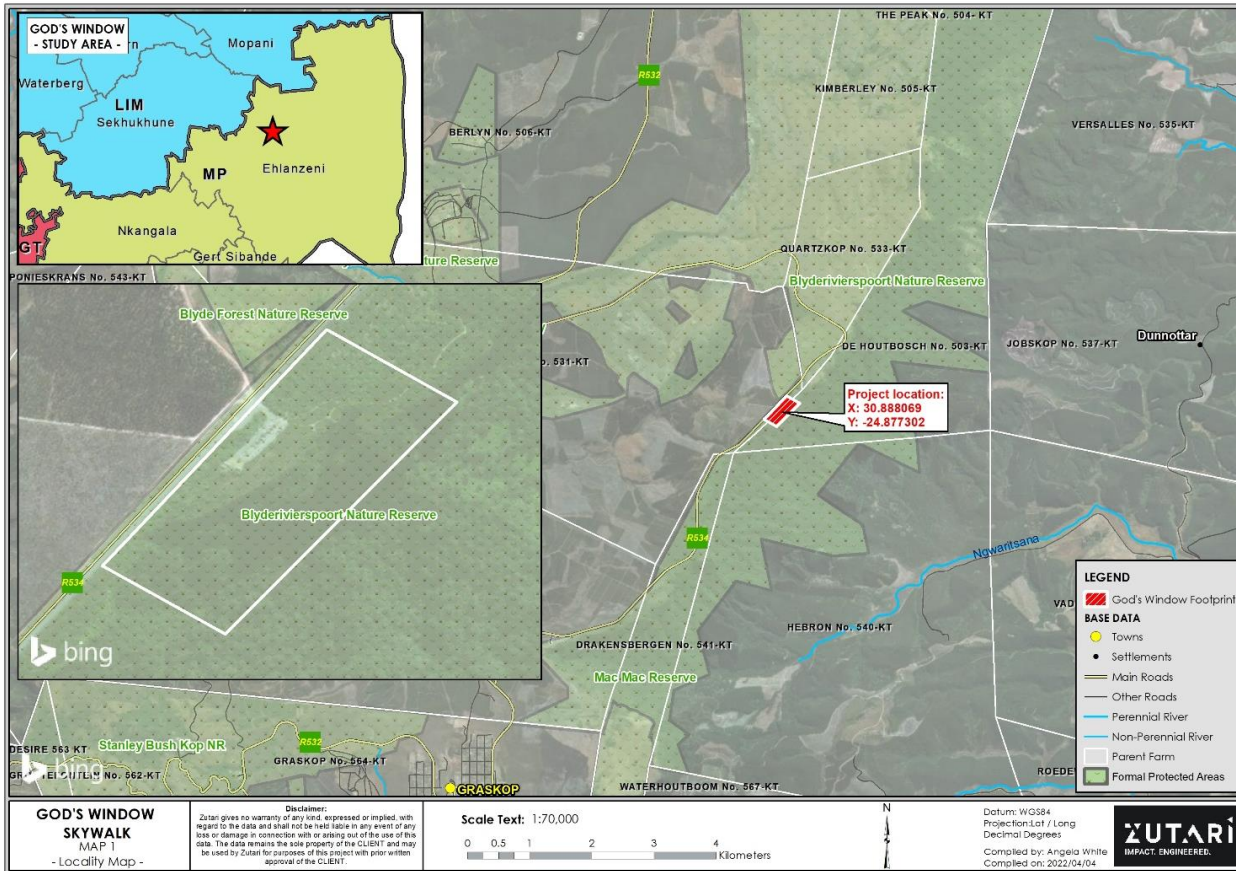
Die projek behels die ontwikkeling van 'n toeristefasiliteit by God's Window. Die projek sal 'n oppervlakte van ongeveer 25 000 m² beslaan, bestaande uit 'n onderste en boonste vlak. Die toeristefasiliteit sluit die volgende hoofbesienswaardighede, ruimtes en infrastruktuur in:

- ▶ 'n Besoekersentrum, insluitend:
 - Restaurant, eet areas, kafees en skemerkelkieroeë;
 - 'n Museum area;
 - Ontvangslokaal, binnehowe en voorportale;
 - 'n Auditorium en konferensiefasiliteite;
 - Lesingslokale;
 - Geformaliseerde handwerkmarkarea;
 - Ablusiegeriewe vir personeel en gaste;
 - Administratiewe kantore.
- ▶ Lugwandelings uitkyk area;
- ▶ 'n Lubrug;
- ▶ 'n "zero gravity" kamer;
- ▶ Stormwater verswakingsdam (om stormwater afloop te bestuur en om erosie te voorkom);
- ▶ 'n Afvalwaterbehandelingspakketaanleg op die terrein;
- ▶ Geformaliseerde parkeerarea (om ligte voertuie, busse en huurkar-pendeltuie te akkommodeer); en
- ▶ Opgradering van bestaande wandelpaie.

Die fasiliteit sal ook tegniese ruimtes soos IT-bedienerkamers, elektriese kamers, asook brand- en natdiens insluit.

2. Waar word dit beplan?

Die projek word voorgestel by God's Window op plase De Houtbosch (Restant van Plaas 503 KT) en Lisbon (Gedeelte 2 van Plaas 531 KT). Dit val binne die Thaba Chweu Plaaslike Munisipaliteit, Ehlanzeni Distriksmunisipaliteit in die Mpumalanga Provinsie.



Figuur 1 | Die ligging van die voorgestelde projek terrein by God's Window

3. Wie onderneem hierdie projek?

- ▶ God's Window is in die Blyderivier Canyon Natuureservaat geleë, wat deur die MTPA bestuur word aangesien dit 'n Beskermdede Gebied is.
- ▶ Die grond van die hele reservaat is deur vier gemeenskappe geëis.
- ▶ Die eisersgemeenskappe word deur vier Kommunale Eiendomsverenigings verteenwoordig wat saam, die Blyde Vallei 04 KEVs vorm.
- ▶ Die vier eisersgemeenskappe word deur Macrabjang, Moletele, Sethlare, and Mahubahuba a Bokone KEVs verteenwoordig.
- ▶ Daar word voorgestel dat die God's Window Lugwandeling-projek, deur 'n Spesiale Doelvoertuig wat die KEVs in vennootskap met die MTPA en ander projekontwikkelaars bestuur word.
- ▶ Die bogenoemde Openbare Privaat Vennootskapsafooreenkoms is dus met Motsamayi Toerisme Groep (Edms) Bpk aangegaan vir die ontwerp, finansiering, bou, bedryf en oordrag van die God's Window Lugwandeling.



4. Gelyste aktiwiteite

Daar sal aansoek gedoen word vir die volgende Gelyste Aktiwiteite ingevolge die Wet op Nasionale Omgewingsbestuur (Wet Nr. 107 van 1998) (WNOB) en sy Omgewingsimpakbepalings (OIB) Regulasies (GK R 982 van 2014, soos gewysig), en Watergebruike ingevolge die Nasionale Waterwet (Wet Nr. 36 van 1998)

| Nr. | Gelyste Aktiwiteit |
|--|--|
| GK R983 van 2014 (Basiese Assessering [BA]) | |
| 12 | Infrastruktuur, damme en keerwalle met 'n fisiese voetspoor van 100 vierkante meter of meer binne 32 m van 'n waterloop. |
| 19 | Die opvulling of afsetting, of die baggerwerk, uitgraving, verwydering of verskuiwing van grond, sand, klipies of rots uit 'n waterloop. |
| 25 | Behandeling van uitvloeisel, afvalwater of riool. |
| 27 | Die opruiming van inheemse plantegroei. |
| 30 | Enige proses of aktiwiteit geïdentifiseer ingevolge artikel 53(1) van die Wet op Nasionale Omgewingsbestuur: Biodiversiteit. |
| GK R985 van 2014 (Provinsiale BA) | |
| 10 | Infrastruktuur vir berging en hantering van 'n gevaarlike goed binne 'n beskermde gebied. |
| 14 | Damme, keerwalle, infrastruktuur of strukture binne 32 m van 'n waterloop, binne 'n beskermde gebied. |
| Nasionale Waterwet (Wet Nr. 36 van 1998) | |
| 21(a) | Die neem van water uit 'n waterbron. |
| 21(b) | Berging van water. |
| 21(c) | Die vloei van water in 'n waterloop belemmer of herlei. |
| 21(f) | Die storting van afval of water wat afval bevat in 'n waterhulpbron. |
| 21(i) | Verandering van die beddings, walle, loop of kenmerke van 'n waterloop. |

5. Ek het jare gelede gehoor van hierdie projek. Hoekom gebeur hierdie proses weer?

'n Omgewingsmagtiging (OM) op 5 Junie 2015 toegestaan deur die Departement van Omgewingsake (nou, Departement van Bosbou, Visserye en die Omgewing) om die God's Window Lugwandelingprojek te ontwikkel (verw. nr. 14/12/16/ 3/3/3/88). As gevolg van verskeie verdragings in die begin van konstruksie, die finalisering van die Openbare Privaat Vennootskapsafooreenkoms en verandering in argitektoniese ontwerpe, die wysiging van die OIB-regulasies gedurende hierdie tydperk, moet die projek 'n nuwe OM-proses ondergaan om te verseker dat dit geldig en van toepassing is, en alle huidige impakte en aspekte wat met die voorgestelde ontwikkeling verband hou, aangespreek word.