

SOVENTIX SA - DE AAR PHASE 3 SENSITIVITY MAP

The development of a 400 MW solar photovoltaic (PV) facility and associated infrastructure (Phase 3) on the Remainder of Farm Goede Hoop 26C, Portion 3 of Farm Goede Hoop 26C and other properties, between De Aar & Hanover, Emthanjeni Local Municipality, Pixley Ka Seme District Municipality, Northern Cape Province, South Africa.

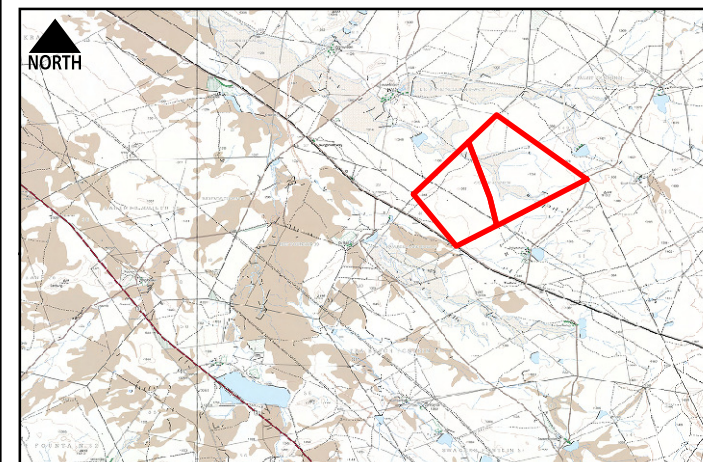
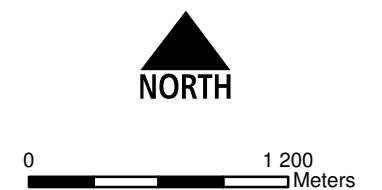
NOTES:

1. The full map extent is covered by the layer: Strategic Transmission Corridor (Central Corridor).
2. The full map extent is covered by the layer: Strategic Water Resource Area (De Aar Region).
3. The full map extent is covered by the layer: Important Bird and Biodiversity Areas.

Legend

- Secondary Road
 - Railway Line
 - Distribution Line
 - Hydra-Poseidon 2 400kV LILO into NEW MTS
 - New MTS
 - Application Site Property
 - Solar PV Area & Fence
 - Substation
 - Farm Portion
 - Parent Farm
- Phase 1 Sensitivity Layers**
- Avian
 - Ecological
 - Geological
 - Geotechnical
 - Heritage
 - Watercourse
 - Zoological
- Phase 3 Sensitivity Layers**
- Raptor Nest Site
 - Proposed Borehole
 - Proposed Quarry
 - Heritage Site
 - Important Bird Area (Whole Site)
 - Bat No-Go Area
 - Avian 50m Watercourse Buffer
 - Watercourse 20m Buffer
 - Watercourse Delineation
 - Large Impoundments 1 km (or 800 m) Buffer
 - Visual & Massing Buffer
- Terrestrial Sensitivity**
- High
 - Medium
- Northern Cape CBA**
- Critical Biodiversity Area One
 - Ecological Support Area

DATE: 06/12/2022
 LOCAL AUTHORITY: EMTHANJENI LOCAL MUNICIPALITY
 PLAN NUMBER: De Aar Ph3 Sensitivity Map ALL
 SCALE: 1:35 000
 PREPARED FOR: Ecologes Environmental Consultants
 DRAWN: DIGITAL EARTH
 linda@digitalearth.co.za
 COORDINATE SYSTEM: GCS WGS 1984



APPLICATION SITE

NGI_TOPO50_Mosaic_DEC2015

