

Sampling & dispensing area.
 Floor Finish: Flowcrete, 9mm Flowfresh HF ESD
 (CR) resin floor screed with anti-static.
 All bund walls to have a wall coving system.

Storage 1: Flammable Chemicals
 Isopropyl Alcohol = 270 units (240W x 290D) 6750Lts
 Floor Finish: Flowcrete, 9mm Flowfresh HF ESD
 (CR) resin floor screed with anti-static.
 All bund walls to have a wall coving system.
 screed to be laid to fall to sump.

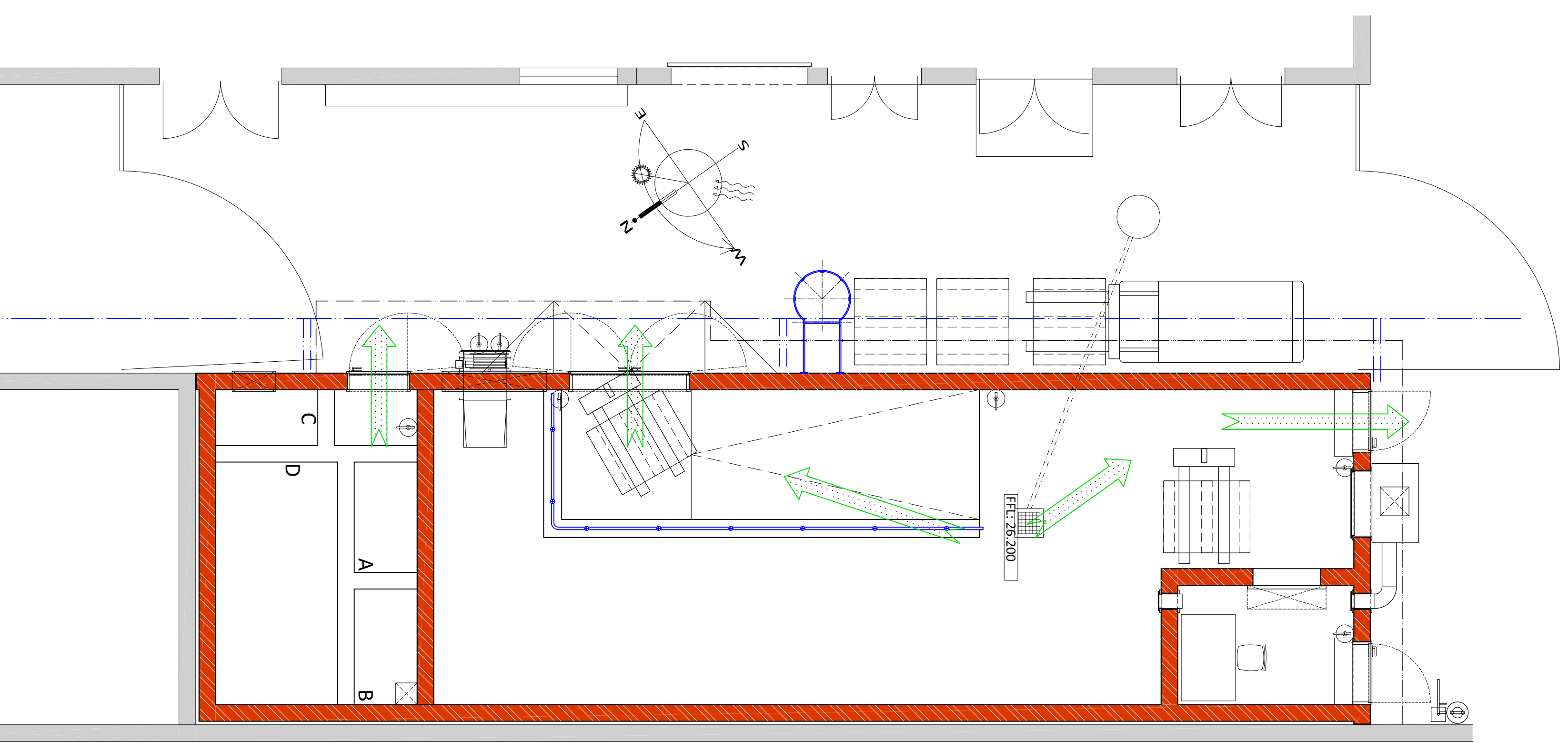
Storage 1: Bunding Details
 Floor area- 39.8m²
 Bund wall height- 400mm
 Freeboard- 150mm
 Volume provided= 39.8*(400-150)*1000 =9950L
 Volume of storage- 8100L+10% =8910L

Sprinkler heads.

Storage 2: Hazardous Chemicals
 88 units (240W x 290D) 2200Lts
 Floor Finish: Flowcrete, 9mm Flowfresh HF ESD
 (CR) resin floor screed with anti-static.
 All bund walls to have a wall coving system.

A: Caustic = 10 x 25L = 250L
 B: Nitric = 10 x 25L = 250L
 C: Electrolyte = 8 x 25L = 200L
 D: Chlorine dioxide = 60 x 25L = 1500L

GROUND STOREY: FIRE PLAN & SPRINKLER LAYOUT
 1:50



Sampling & dispensing area.
 Floor Finish: Flowcrete, 9mm Flowfresh HF ESD
 (CR) resin floor screed with anti-static.
 All bund walls to have a wall coving system.

Storage 1: Flammable Chemicals
 Isopropyl Alcohol = 270 units (240W x 290D) 6750Lts
 Floor Finish: Flowcrete, 9mm Flowfresh HF ESD
 (CR) resin floor screed with anti-static.
 All bund walls to have a wall coving system.
 screed to be laid to fall to sump.

Storage 1: Bunding Details
 Floor area- 39.8m²
 Bund wall height- 400mm
 Freeboard- 150mm
 Volume provided= 39.8*(400-150)*1000 =9950L
 Volume of storage- 8100L+10% =8910L

Storage 2: Hazardous Chemicals
 88 units (240W x 290D) 2200Lts
 Floor Finish: Flowcrete, 9mm Flowfresh HF ESD
 (CR) resin floor screed with anti-static.
 All bund walls to have a wall coving system.

A: Caustic = 10 x 25L = 250L
 B: Nitric = 10 x 25L = 250L
 C: Electrolyte = 8 x 25L = 200L
 D: Chlorine dioxide = 60 x 25L = 1500L

GROUND STOREY: ESCAPE ROUTE LAYOUT
 1:50

REVISION	DATE	DESCRIPTION
F	20/11/2016	Issued for Heritage approval

CONTACT DETAILS
 K u p p a n
 Architectural
 D e s i g n s

031 265 4388
 031 265 4389
 0835071487
 shervin@kaddesigns.co.za
 2nd Floor, Master Builders Centre, 40 Essex Terrace, Westville
 P.O. Box 1274 Westville, 6013

www.kaddesigns.co.za

CLIENT / OWNER DETAILS
 NAME: Shervin Kuppán & Yashini Lukan
 SIGNATURE:

Metboard (Properties Limited)

Metboard (Properties Limited)

PROJECT TITLE:
 Proposed New Flammable
 Liquid Storage Area on Existing
 ERF 730, at 1474 South Coast
 Road, Mobeini.

DRAWING TITLE:
 GROUND STOREY
 FIRE PLAN

DRAWING NUMBER:	034_SK_1004
SCALE:	1:50 (A1)
DESIGNED FOR:	HERITAGE APPROVAL
ISSUED DATE:	20/11/2016
DRAWN BY:	SK