

---

**Aneesah Alwie**

**From:** No-reply-info@dot.gov.za  
**Sent:** Friday, November 16, 2018 9:35 AM  
**To:** Highlands  
**Subject:** Incident ID# 107421 is resolved.

Hi Highlands Highlands,

Incident# 107421 has been resolved:

**Incident #** 107421

**Summary:** FW: Notification of Availability of Draft Basic Assessment Reports for Highlands Wind Energy Facilities for Public Comment

**Customer Name:** Highlands Highlands

**Location:**

**Priority:** 3

**Status:** Resolved

**Category:**

**Resolved On:** 2018-11-16 09:35:09 AM (UTC 02:00) - Africa/Johannesburg

**Technician Name:** MakwelaM

**Description**

Good day,

I would like to follow up with regards to your comment on the below developments. The comment period closed on 25 October 2018 and we have not received comment from the DOT. Please could advise if you will be commenting. The comment period ended on 25 October 2018 but we can include your comment in the final report if it arrives by 30 November 2018. After that your comment will be sent directly to the Department of Environmental Affairs for their consideration.

Kind Regards,

Anja Albertyn  
Environmental Practitioner

Tel: +27 (0) 21 412 1529  
Email: [highlands@arcusconsulting.co.za](mailto:highlands@arcusconsulting.co.za)

Arcus  
Office 220 Cube Workspace  
Cnr Long Street and Hans Strijdom Road  
Cape Town  
8001

[www.arcusconsulting.co.za](http://www.arcusconsulting.co.za)

[cid:image008.png@01D47CF6.CD6081C0]

From: Highlands  
Sent: 17 September 2018 16:25  
Subject: Notification of Availability of Draft Basic Assessment Reports for Highlands Wind Energy Facilities for Public Comment

Dear Interested & Affected Party,

RE: NOTIFICATION OF AVAILABILITY OF DRAFT BASIC ASSESSMENT REPORTS FOR THE PROPOSED HIGHLANDS WIND ENERGY FACILITIES AND ASSOCIATED GRID CONNECTIONS, EASTERN CAPE PROVINCE

You are receiving this notification regarding the availability of the Draft Basic Assessment Reports for the proposed Highlands Wind Energy Facilities and associated grid connections, as you have been identified as an Interested and Affected Party (I&AP). We invite you to review and comment on these reports.

Please find the attached letter for your interest, in English and Afrikaans:

- 1.) NOTIFICATION OF AVAILABILITY OF THE DRAFT BASIC ASSESSMENT REPORTS FOR THE PROPOSED HIGHLANDS WIND ENERGY FACILITIES AND ASSOCIATED INFRASTRUCTURE IN THE EASTERN CAPE PROVINCE
- 2.) KENNISGEWING VAN BESKIKBAARHEID VAN DIE KONSEP BASIESE ASSESSESRINGSVERSLAE VIR DIE VOORGESTELDE HIGHLANDS-WINDKRAGANLEG EN GEPAARDGAANDE INFRASTRUKTUUR IN DIE OOS-KAAP

The Basic Assessment reports are available for public review and comment from 18 September 2018 to 18 October 2018 (both days inclusive) at the following locations:

- \* Langenhoven Library, Somerset East;
- \* Ernst van Heerden Library, Pearston;
- \* Website <https://arcusconsulting.co.za/projects/highlands-wind-energy-facilities-basic-assessment-reports-for-public-review/>

Electronic copies on CD-ROM are available on request.

With reference to the proposed development, please send your comments on the Draft Basic Assessment Reports in writing by the 18 October 2018 to:

Anja Albertyn; [highlands@arcusconsulting.co.za](mailto:highlands@arcusconsulting.co.za) <<mailto:highlands@arcusconsulting.co.za>>  
Phone: 021 412 1529 or Fax: 086 762 2885;  
Postal: Office 220, Cube Workspace, Cnr Long Street and Hans Strijdom Avenue, Cape Town 8001

Please feel free to contact me should you have any further queries, or should you no longer wish to receive notifications regarding the above projects.

Kind Regards,

Anja Albertyn  
Environmental Practitioner

Tel: +27 (0) 21 412 1529

Email: [highlands@arcusconsulting.co.za](mailto:highlands@arcusconsulting.co.za)<<mailto:highlands@arcusconsulting.co.za>>

Arcus  
Office 220 Cube Workspace  
Cnr Long Street and Hans Strijdom Road  
Cape Town  
8001

[www.arcusconsulting.co.za](http://www.arcusconsulting.co.za)<<http://www.arcusconsulting.co.za>>

[cid:image002.png@01D44EA2.DA89A7F0]

## **Resolution**

How is this related to our department.

**If the Call has not been resolved to your satisfaction, please contact the Service Desk with your reference number.**

**Should we not hear from you within 2 days, we will automatically close this call.**

**Regards,**

**DOT Service Desk**

## Anja Albertyn

---

**From:** Microsoft Outlook  
**To:** info@dot.gov.za  
**Sent:** 15 November 2018 15:21  
**Subject:** Relayed: FW: Notification of Availability of Draft Basic Assessment Reports for Highlands Wind Energy Facilities for Public Comment

**Delivery to these recipients or groups is complete, but no delivery notification was sent by the destination server:**

[info@dot.gov.za](mailto:info@dot.gov.za) ([info@dot.gov.za](mailto:info@dot.gov.za))

Subject: FW: Notification of Availability of Draft Basic Assessment Reports for Highlands Wind Energy Facilities for Public Comment



FW: Notification  
of Availabili...

## Anja Albertyn

---

**From:** Anja Albertyn  
**Sent:** 15 November 2018 15:26  
**To:** 'MakhanyaP@dwa.gov.za'  
**Subject:** FW: Notification of Availability of Draft Basic Assessment Reports for Highlands Wind Energy Facilities for Public Comment  
**Attachments:** Highlands\_WEFs\_Draft BAR\_Notification\_IAPs\_AFR.PDF; Highlands\_WEFs\_Draft BAR\_Notification\_IAPs.pdf

Good day,

I would like to follow up with regards to your comment on the below developments. The comment period closed on 25 October 2018 and we have not received comment from the Department of Water and Sanitation. Please could advise if you will be commenting. The comment period ended on 25 October 2018 but we can include your comment in the final report if it arrives by 30 November 2018. After that your comment will be sent directly to the Department of Environmental Affairs for their consideration.

Thank you and kind regards,

**Anja Albertyn**  
Environmental Practitioner

---

Tel: +27 (0) 21 412 1529  
Email: [highlands@arcusconsulting.co.za](mailto:highlands@arcusconsulting.co.za)

---

**Arcus**  
Office 220 Cube Workspace  
Cnr Long Street and Hans Strijdom Road  
Cape Town  
8001

---

[www.arcusconsulting.co.za](http://www.arcusconsulting.co.za)



---

**From:** Highlands  
**Sent:** 17 September 2018 16:25  
**Subject:** Notification of Availability of Draft Basic Assessment Reports for Highlands Wind Energy Facilities for Public Comment

Dear Interested & Affected Party,

**RE: NOTIFICATION OF AVAILABILITY OF DRAFT BASIC ASSESSMENT REPORTS FOR THE PROPOSED HIGHLANDS WIND ENERGY FACILITIES AND ASSOCIATED GRID CONNECTIONS, EASTERN CAPE PROVINCE**

You are receiving this notification regarding the availability of the Draft Basic Assessment Reports for the proposed Highlands Wind Energy Facilities and associated grid connections, as you have been identified as an Interested and Affected Party (I&AP). We invite you to review and comment on these reports.

Please find the attached letter for your interest, in English and Afrikaans:

- 1.) NOTIFICATION OF AVAILABILITY OF THE DRAFT BASIC ASSESSMENT REPORTS FOR THE PROPOSED HIGHLANDS WIND ENERGY FACILITIES AND ASSOCIATED INFRASTRUCTURE IN THE EASTERN CAPE PROVINCE
- 2.) KENNISGEWING VAN BESIKKBAARHEID VAN DIE KONSEP BASIESE ASSESSESRINGSVERSLAE VIR DIE VOORGESTELDE HIGHLANDS-WINDKRAGAAANLEG EN GEPAARDGAANDE INFRASTRUKTUUR IN DIE OOS-KAAP

The Basic Assessment reports are available for public review and comment from 18 September 2018 to 18 October 2018 (both days inclusive) at the following locations:

- Langenhoven Library, Somerset East;
- Ernst van Heerden Library, Pearston;
- Website <https://arcusconsulting.co.za/projects/highlands-wind-energy-facilities-basic-assessment-reports-for-public-review/>

Electronic copies on CD-ROM are available on request.

With reference to the proposed development, please send your comments on the **Draft Basic Assessment Reports** in writing **by the 18 October 2018** to:

Anja Albertyn; [highlands@arcusconsulting.co.za](mailto:highlands@arcusconsulting.co.za)

Phone: 021 412 1529 or Fax: 086 762 2885;

Postal: Office 220, Cube Workspace, Cnr Long Street and Hans Strijdom Avenue, Cape Town 8001

Please feel free to contact me should you have any further queries, or should you no longer wish to receive notifications regarding the above projects.

Kind Regards,

**Anja Albertyn**

Environmental Practitioner

---

Tel: +27 (0) 21 412 1529

Email: [highlands@arcusconsulting.co.za](mailto:highlands@arcusconsulting.co.za)

---

**Arcus**

Office 220 Cube Workspace

Cnr Long Street and Hans Strijdom Road

Cape Town

8001

---

[www.arcusconsulting.co.za](http://www.arcusconsulting.co.za)





## Anja Albertyn

---

**From:** Microsoft Outlook  
**To:** MakhanyaP@dwa.gov.za  
**Sent:** 15 November 2018 15:26  
**Subject:** Relayed: FW: Notification of Availability of Draft Basic Assessment Reports for Highlands Wind Energy Facilities for Public Comment

**Delivery to these recipients or groups is complete, but no delivery notification was sent by the destination server:**

[MakhanyaP@dwa.gov.za](mailto:MakhanyaP@dwa.gov.za) (MakhanyaP@dwa.gov.za)

Subject: FW: Notification of Availability of Draft Basic Assessment Reports for Highlands Wind Energy Facilities for Public Comment



FW: Notification  
of Availabili...

## Anja Albertyn

---

**From:** Highlands  
**Sent:** 15 November 2018 15:30  
**To:** 'runkelc@nra.co.za'; 'Kleinhansm@nra.co.za'; 'Abrahamsn@nra.co.za'; 'Dekockr@nra.co.za'  
**Subject:** FW: Notification of Availability of Draft Basic Assessment Reports for Highlands Wind Energy Facilities for Public Comment  
**Attachments:** Highlands\_WEFs\_Draft BAR\_Notification\_IAPs\_AFR.PDF; Highlands\_WEFs\_Draft BAR\_Notification\_IAPs.pdf

Good day

I would like to follow up with regards to your comment on the below developments. The comment period closed on 25 October 2018 and we have not received comment from SANRAL. Please could advise if you will be commenting. The comment period ended on 25 October 2018 but we can include your comment in the final report if it arrives by 30 November 2018. After that your comment will be sent directly to the Department of Environmental Affairs for their consideration.

Thank you and kind regards,

### Anja Albertyn

Environmental Practitioner

---

Tel: +27 (0) 21 412 1529

Email: [highlands@arcusconsulting.co.za](mailto:highlands@arcusconsulting.co.za)

### Arcus

Office 220 Cube Workspace  
Cnr Long Street and Hans Strijdom Road  
Cape Town  
8001

---

[www.arcusconsulting.co.za](http://www.arcusconsulting.co.za)



---

**From:** Highlands  
**Sent:** 17 September 2018 16:24  
**Subject:** Notification of Availability of Draft Basic Assessment Reports for Highlands Wind Energy Facilities for Public Comment

Dear Interested & Affected Party,

### **RE: NOTIFICATION OF AVAILABILITY OF DRAFT BASIC ASSESSMENT REPORTS FOR THE PROPOSED HIGHLANDS WIND ENERGY FACILITIES AND ASSOCIATED GRID CONNECTIONS, EASTERN CAPE PROVINCE**

You are receiving this notification regarding the availability of the Draft Basic Assessment Reports for the proposed Highlands Wind Energy Facilities and associated grid connections, as you have been identified as an Interested and Affected Party (I&AP). We invite you to review and comment on these reports.

## Anja Albertyn

---

**From:** Chumisa Njingana (SR) <NjinganaC@nra.co.za>  
**Sent:** 13 December 2018 18:20  
**To:** Highlands  
**Cc:** 'Johannes Nel'  
**Subject:** Proposed Highlands Wind Energy Farm R63  
**Attachments:** Highlands Wind Energy R63.pdf

**Importance:** High

**Follow Up Flag:** Follow up  
**Flag Status:** Flagged

Good day Mr. / Ms. Anja

Hope that this email finds you well.

Please find the attachment for your attention.

The original will be sent via Post Office.

Have a blessed day.

Kind regards  
Chumisa

Chumisa Njingana (SR)  
Statutory Control Administrator

20 Shoreward Drive, Baywest, Port Elizabeth, Eastern Cape, 6025, South Africa  
D: 041 398 3251 | M:  
njinganac@nra.co.za | www.sanral.co.za  
Fraud Hotline Number - 0800 204 558



Please consider the environment before printing.

---

### Disclaimer

This message contains confidential information and is intended only for the individual named. If you are not the named addressee you should not disseminate, distribute or copy this e-mail. Please notify the sender immediately by e-mail if you have received this e-mail by mistake and delete this e-mail from your system. E-mail transmission cannot be guaranteed to be secure or without errors as information could be intercepted, corrupted, lost, destroyed, arrive late or incomplete, or contain viruses. The sender therefore does not accept liability for any errors or omissions in the contents of this message, which arise as a result of e-mail transmission. If verification is required please request a hard-copy version. The South African National Roads Agency SOC Ltd, PO Box 415, Pretoria, 0001, South Africa, Tel +27-(0)12 844 8000, www.nra.co.za. This Disclaimer is deemed to form part of the content of this email in terms of Section 11 of the Electronic Communications and Transactions Act, 25 of 2002.

---



Reference: S11/1/1                      Fax Number: +27 (0) 41 492 0200/01  
Date: 13 December 2018              Contact No.: +27 (0) 41 398 3200  
Enquiries: Chumisa Njingana              Direct Line: +27 (0) 41 398 3251  
Email: njinganac@nra.co.za              Website: [www.nra.co.za](http://www.nra.co.za)

Arcus Consultancy Services South Africa  
Kantoor 220 Cube Workspace  
h/v Langstraat en Hans Strijdom Road  
Kaapstad  
8001

**Attention: Mr. / Ms. Anja Albertyn**  
By e-mail: [highlands@arcusconsulting.co.za](mailto:highlands@arcusconsulting.co.za)

Dear Sir / Madam

**THE SOUTH AFRICAN NATIONAL ROADS AGENCY LIMITED AND NATIONAL ROADS ACT,  
1998 (ACT 7 OF 1998): NATIONAL ROAD R63 SECTION 10 - PROPOSED HIGHLANDS WIND  
ENERGY FACILITIES AND ASSOCIATED GRID CONNECTIONS, EASTERN CAPE PROVINCE**

Reference is made by the notice placed on the National road R63 boundary fence.

The South African National Roads Agency (SOC) Limited (SANRAL) have the following comments with regards to the proposed Highlands Wind Energy Facilities and associated Grid connections:

- The wind turbines must be erected at least 200 metres from the National Road Reserve boundary. If this requirement cannot be met, then a good motivation has to be submitted to SANRAL as to why the wind turbines should be erected closer.
- All other buildings / structures should be erected at least 60 metres from the National Road Reserve boundary and / or 500 metres from any intersection.
- If access is required from the National Road R63, an approval from SANRAL is required, otherwise access can be obtained from the nearest numbered route.
- A formal application together with the plans of the proposed wind farm must be submitted to SANRAL for approval.

- No installation of any infrastructure inside the Road Reserve.
- Construction of all work may only commence after written approval has been obtained from SANRAL.

**Yours sincerely**



**C. C. Njingana**  
**On behalf of M.S. Peterson**  
**Regional Manager: Southern Region**

Copy to:

Route Manager  
Mr. Johannes Nel  
[johannes@msba.co.za](mailto:johannes@msba.co.za)

## Anja Albertyn

---

**From:** Highlands  
**Sent:** 15 November 2018 15:32  
**To:** 'ewt@ewt.org.za'; 'lourensl@ewt.org.za'  
**Subject:** FW: Notification of Availability of Draft Basic Assessment Reports for Highlands Wind Energy Facilities for Public Comment  
**Attachments:** Highlands\_WEFs\_Draft BAR\_Notification\_IAPs\_AFR.PDF; Highlands\_WEFs\_Draft BAR\_Notification\_IAPs.pdf

Dear Lourens,

I would like to follow up with regards to your comment on the below developments. The comment period closed on 25 October 2018 and we have not received comment from the EWT. Please could advise if you will be commenting? The comment period ended on 25 October 2018 but we can include your comment in the final report if it arrives by 30 November 2018. After that your comment will be sent directly to the Department of Environmental Affairs for their consideration.

Thank you and kind regards,

**Anja Albertyn**  
Environmental Practitioner

---

Tel: +27 (0) 21 412 1529  
Email: [highlands@arcusconsulting.co.za](mailto:highlands@arcusconsulting.co.za)

**Arcus**  
Office 220 Cube Workspace  
Cnr Long Street and Hans Strijdom Road  
Cape Town  
8001

---

[www.arcusconsulting.co.za](http://www.arcusconsulting.co.za)



---

**From:** Highlands  
**Sent:** 17 September 2018 16:24  
**Subject:** Notification of Availability of Draft Basic Assessment Reports for Highlands Wind Energy Facilities for Public Comment

Dear Interested & Affected Party,

**RE: NOTIFICATION OF AVAILABILITY OF DRAFT BASIC ASSESSMENT REPORTS FOR THE PROPOSED HIGHLANDS WIND ENERGY FACILITIES AND ASSOCIATED GRID CONNECTIONS, EASTERN CAPE PROVINCE**

You are receiving this notification regarding the availability of the Draft Basic Assessment Reports for the proposed Highlands Wind Energy Facilities and associated grid connections, as you have been identified as an Interested and Affected Party (I&AP). We invite you to review and comment on these reports.

Please find the attached letter for your interest, in English and Afrikaans:

- 1.) NOTIFICATION OF AVAILABILITY OF THE DRAFT BASIC ASSESSMENT REPORTS FOR THE PROPOSED HIGHLANDS WIND ENERGY FACILITIES AND ASSOCIATED INFRASTRUCTURE IN THE EASTERN CAPE PROVINCE
- 2.) KENNISGEWING VAN BESIKKBAARHEID VAN DIE KONSEP BASIESE ASSESSESRINGSVERSLAE VIR DIE VOORGESTELDE HIGHLANDS-WINDKRAGAAANLEG EN GEPAARDGAANDE INFRASTRUKTUUR IN DIE OOS-KAAP

The Basic Assessment reports are available for public review and comment from 18 September 2018 to 18 October 2018 (both days inclusive) at the following locations:

- Langenhoven Library, Somerset East;
- Ernst van Heerden Library, Pearston;
- Website <https://arcusconsulting.co.za/projects/highlands-wind-energy-facilities-basic-assessment-reports-for-public-review/>

Electronic copies on CD-ROM are available on request.

With reference to the proposed development, please send your comments on the **Draft Basic Assessment Reports** in writing **by the 18 October 2018** to:

Anja Albertyn; [highlands@arcusconsulting.co.za](mailto:highlands@arcusconsulting.co.za)

Phone: 021 412 1529 or Fax: 086 762 2885;

Postal: Office 220, Cube Workspace, Cnr Long Street and Hans Strijdom Avenue, Cape Town 8001

Please feel free to contact me should you have any further queries, or should you no longer wish to receive notifications regarding the above projects.

Kind Regards,

**Anja Albertyn**

Environmental Practitioner

---

Tel: +27 (0) 21 412 1529

Email: [highlands@arcusconsulting.co.za](mailto:highlands@arcusconsulting.co.za)

---

**Arcus**

Office 220 Cube Workspace

Cnr Long Street and Hans Strijdom Road

Cape Town

8001

---

[www.arcusconsulting.co.za](http://www.arcusconsulting.co.za)



## Anja Albertyn

---

**From:** Highlands  
**Sent:** 15 November 2018 15:40  
**To:** 'Azwihangwisi.Mulaudzi@dmr.gov.za'; 'samradonline@dmr.gov.za'  
**Subject:** FW: Notification of Availability of Draft Basic Assessment Reports for Highlands Wind Energy Facilities for Public Comment  
**Attachments:** Highlands\_WEFs\_Draft BAR\_Notification\_IAPs\_AFR.PDF; Highlands\_WEFs\_Draft BAR\_Notification\_IAPs.pdf

Good day

I would like to follow up with regards to your comment on the below developments. The comment period closed on 25 October 2018 and we have not received comment from the DMR. Please could advise if you will be commenting? We can include your comment in the final report if it arrives by 30 November 2018. After that your comment will be sent directly to the Department of Environmental Affairs for their consideration.

Thank you and kind regards,

**Anja Albertyn**  
Environmental Practitioner

---

Tel: +27 (0) 21 412 1529  
Email: [highlands@arcusconsulting.co.za](mailto:highlands@arcusconsulting.co.za)

**Arcus**  
Office 220 Cube Workspace  
Cnr Long Street and Hans Strijdom Road  
Cape Town  
8001

---

[www.arcusconsulting.co.za](http://www.arcusconsulting.co.za)



---

**From:** Highlands  
**Sent:** 17 September 2018 16:24  
**Subject:** Notification of Availability of Draft Basic Assessment Reports for Highlands Wind Energy Facilities for Public Comment

Dear Interested & Affected Party,

**RE: NOTIFICATION OF AVAILABILITY OF DRAFT BASIC ASSESSMENT REPORTS FOR THE PROPOSED HIGHLANDS WIND ENERGY FACILITIES AND ASSOCIATED GRID CONNECTIONS, EASTERN CAPE PROVINCE**

You are receiving this notification regarding the availability of the Draft Basic Assessment Reports for the proposed Highlands Wind Energy Facilities and associated grid connections, as you have been identified as an Interested and Affected Party (I&AP). We invite you to review and comment on these reports.

Please find the attached letter for your interest, in English and Afrikaans:



- 1.) NOTIFICATION OF AVAILABILITY OF THE DRAFT BASIC ASSESSMENT REPORTS FOR THE PROPOSED HIGHLANDS WIND ENERGY FACILITIES AND ASSOCIATED INFRASTRUCTURE IN THE EASTERN CAPE PROVINCE
- 2.) KENNISGEWING VAN BESIKKBAARHEID VAN DIE KONSEP BASIESE ASSESSESRINGSVERSLAE VIR DIE VOORGESTELDE HIGHLANDS-WINDKRAGAAANLEG EN GEPAARDGAANDE INFRASTRUKTUUR IN DIE OOS-KAAP

The Basic Assessment reports are available for public review and comment from 18 September 2018 to 18 October 2018 (both days inclusive) at the following locations:

- Langenhoven Library, Somerset East;
- Ernst van Heerden Library, Pearston;
- Website <https://arcusconsulting.co.za/projects/highlands-wind-energy-facilities-basic-assessment-reports-for-public-review/>

Electronic copies on CD-ROM are available on request.

With reference to the proposed development, please send your comments on the **Draft Basic Assessment Reports** in writing **by the 18 October 2018** to:

Anja Albertyn; [highlands@arcusconsulting.co.za](mailto:highlands@arcusconsulting.co.za)

Phone: 021 412 1529 or Fax: 086 762 2885;

Postal: Office 220, Cube Workspace, Cnr Long Street and Hans Strijdom Avenue, Cape Town 8001

Please feel free to contact me should you have any further queries, or should you no longer wish to receive notifications regarding the above projects.

Kind Regards,

**Anja Albertyn**

Environmental Practitioner

---

Tel: +27 (0) 21 412 1529

Email: [highlands@arcusconsulting.co.za](mailto:highlands@arcusconsulting.co.za)

**Arcus**

Office 220 Cube Workspace  
Cnr Long Street and Hans Strijdom Road  
Cape Town  
8001

---

[www.arcusconsulting.co.za](http://www.arcusconsulting.co.za)



---

**From:** Chris Bertie <[cbertie@acland.co.za](mailto:cbertie@acland.co.za)>  
**Sent:** Monday, 26 November 2018 06:37  
**To:** [kantorcc@iafrica.com](mailto:kantorcc@iafrica.com)  
**Subject:** Draft Basic Assessment Reports for Highlands Wind Energy Facilities for Public Comment

Hi Peter  
This was my mail to Arcus, the environmental consultants, and their response.  
Regards  
Chris.

CJ Bertie  
[cbertie@acland.co.za](mailto:cbertie@acland.co.za)  
0836254069

---

**From:** Highlands [<mailto:Highlands@arcusconsulting.co.za>]  
**Sent:** Thursday, November 22, 2018 6:35 PM  
**To:** Chris Bertie <[cbertie@acland.co.za](mailto:cbertie@acland.co.za)>; Highlands <[Highlands@arcusconsulting.co.za](mailto:Highlands@arcusconsulting.co.za)>  
**Cc:** [alan@anglerandantelope.com](mailto:alan@anglerandantelope.com); 'David Louw' <[davidlouw@me.com](mailto:davidlouw@me.com)>; Catherina de Lange <[cdelange@legacyhotels.co.za](mailto:cdelange@legacyhotels.co.za)>; 'Gerhard de Lange' <[gdelange@legacyhotels.co.za](mailto:gdelange@legacyhotels.co.za)>; Legacy Gert Brumme <[gbrumme@legacyhotels.co.za](mailto:gbrumme@legacyhotels.co.za)>  
**Subject:** RE: Draft Basic Assessment Reports for Highlands Wind Energy Facilities for Public Comment

Dear Mr Bertie,

Thank you for your interest in the project and getting in touch regarding your concerns. Your email will be included in the Comments & Response Report, and you are now registered as an I&AP and will be updated about the progress of the process. You are welcome to view the Draft Basic Assessment reports for the proposed developments at this link:

<https://arcusconsulting.co.za/projects/highlands-wind-energy-facilities-basic-assessment-reports-for-public-review/>

I specifically refer you to Volume II – 8 - Visual Impact Assessment which assesses the visual impact on the surrounding environment.

<https://arcusconsulting.co.za/wp-content/uploads/sites/2/2018/09/8-Visual-Impact-Assessment.pdf>

While the official commenting period has closed you can still submit your comments on the proposed developments to us for consideration by the Department of Environmental Affairs.

It appears that your property lies very far (more than 50 km) from the proposed development and was therefore not considered a potentially affected party.

I look forward to receiving your comment.

Kind Regards,

**Anja Albertyn**  
Environmental Practitioner

---

Tel: +27 (0) 21 412 1529  
Email: [highlands@arcusconsulting.co.za](mailto:highlands@arcusconsulting.co.za)

---

## Anja Albertyn

---

**From:** Highlands  
**Sent:** 03 December 2018 11:26  
**To:** kantorcc@iafrica.com; Highlands  
**Cc:** 'Chris Bertie'  
**Subject:** RE: Draft Basic Assessment Reports for Highlands Wind Energy Facilities for Public Comment

Dear Peter,

Thank you for your comment which I have forwarded on to the visual specialists for their response. I have also added you to the I&AP database for the project so that you will be kept informed of the progress of the process.

Kind Regards,

**Anja Albertyn**  
Environmental Practitioner

---

Tel: +27 (0) 21 412 1529  
Email: [highlands@arcusconsulting.co.za](mailto:highlands@arcusconsulting.co.za)

**Arcus**  
Office 220 Cube Workspace  
Cnr Long Street and Hans Strijdom Road  
Cape Town  
8001

---

[www.arcusconsulting.co.za](http://www.arcusconsulting.co.za)



---

**From:** kantorcc@iafrica.com [mailto:kantorcc@iafrica.com]  
**Sent:** 26 November 2018 14:43  
**To:** Highlands <Highlands@arcusconsulting.co.za>  
**Cc:** 'Chris Bertie' <cbertie@acland.co.za>  
**Subject:** FW: Draft Basic Assessment Reports for Highlands Wind Energy Facilities for Public Comment

Dear Anja

I am assisting Chris Bertie in this matter. It would be very helpful if you could assist my client by showing what the proposed wind farms would look like from Kuzuko Lodge, which is at GPS coordinates 33deg 12'51.10" S ; 25deg 29'43.15" E (you can google Kazuko Lodge on Google Maps. What my client is looking for is a map to show the position of the wind farms relative to his lodge, and a visual image (perhaps a photo montage) of what the wind turbines would look like from his lodge.

I look forward to your response.

Kind regards  
Peter Kantor

**From:** Menno Klapwijk [mailto:menno@bcksa.co.za]  
**Sent:** Monday, December 10, 2018 10:17 PM  
**To:** Chris Bertie <cbertie@acland.co.za>; 'Andre van der Spuy' <avdspuy@iafrica.com>  
**Cc:** 'Flemming Jensen' <info@sidebysidesafaris.com>; 'Hein Badenhorst' <sillery@iafrica.com>  
**Subject:** RE: Highlands WEF: VIA review

Dear Chris

We have developed a Viewshed map of the proposed windfarm in relation to Kuzuko. From it you can see that a large portion of the farm will be in direct line of sight.

We used the positions of the Phase 3 turbines as these were the most southern and closed to Kuzuko. However, for completeness we can generate the viewshed for all phases at short notice.

The farm is between 35 and 45 km from the proposed windfarm. During the day, unless it is very clear day, a viewer will not readily see the turbines due to the distance unless looking specifically for them. I have based this on the approximately 40 km viewing distance of the Cookhouse windfarms from farms such as Kamala, Side By Side Safaris, Eastern Cape Safaris and Boskam. These turbines are visible fairly faintly during the day. However, these become far more visible at night with the red flashing aviation warning lights that are positioned at the top of the turbines. These contrast significantly against a relative un-lit night landscape

I hope this gives you a better understanding of what to expect

Kind regards

Menno

---

**From:** Chris Bertie [mailto:cbertie@acland.co.za]

**Sent:** 22 November 2018 17:46

**To:** Highlands <Highlands@arcusconsulting.co.za>

**Cc:** alan@anglerandantelope.com; 'David Louw' <davidlouw@me.com>; Catherina de Lange <cdelange@legacyhotels.co.za>; 'Gerhard de Lange' <gdelange@legacyhotels.co.za>; Legacy Gert Brumme <gbrumme@legacyhotels.co.za>

**Subject:** Draft Basic Assessment Reports for Highlands Wind Energy Facilities for Public Comment

Dear Ms Albertyn

I am a director of Kuzuko Lodge (Pty ) Ltd, a hospitality business that operates in the Kommadagga Area of the Eastern Cape some 90 km's from Somerset East.

I have just been advised about the possibility of a windfarm being built in the area in which we operate and as we understand what is being planned it will in all likelihood have a disastrous impact on our business.

We are a major employer in the Somerset East Area and we are dismayed that we were not advised/consulted on a project that would seriously negatively impact our business

The positioning of the windfarm and the lights on the turbines will totally spoil the views from our property during the day and even more so at night and potentially put 65 permanent and some 20 part time jobs at risk in a society where unemployment is in excess of 50%. If our business suffers there will be many businesses in Somerset East that we support that will also suffer and that the Somerset East area cannot afford.

Please contact me as a matter of urgency so that we can interact with Arcus and formally object to the project.

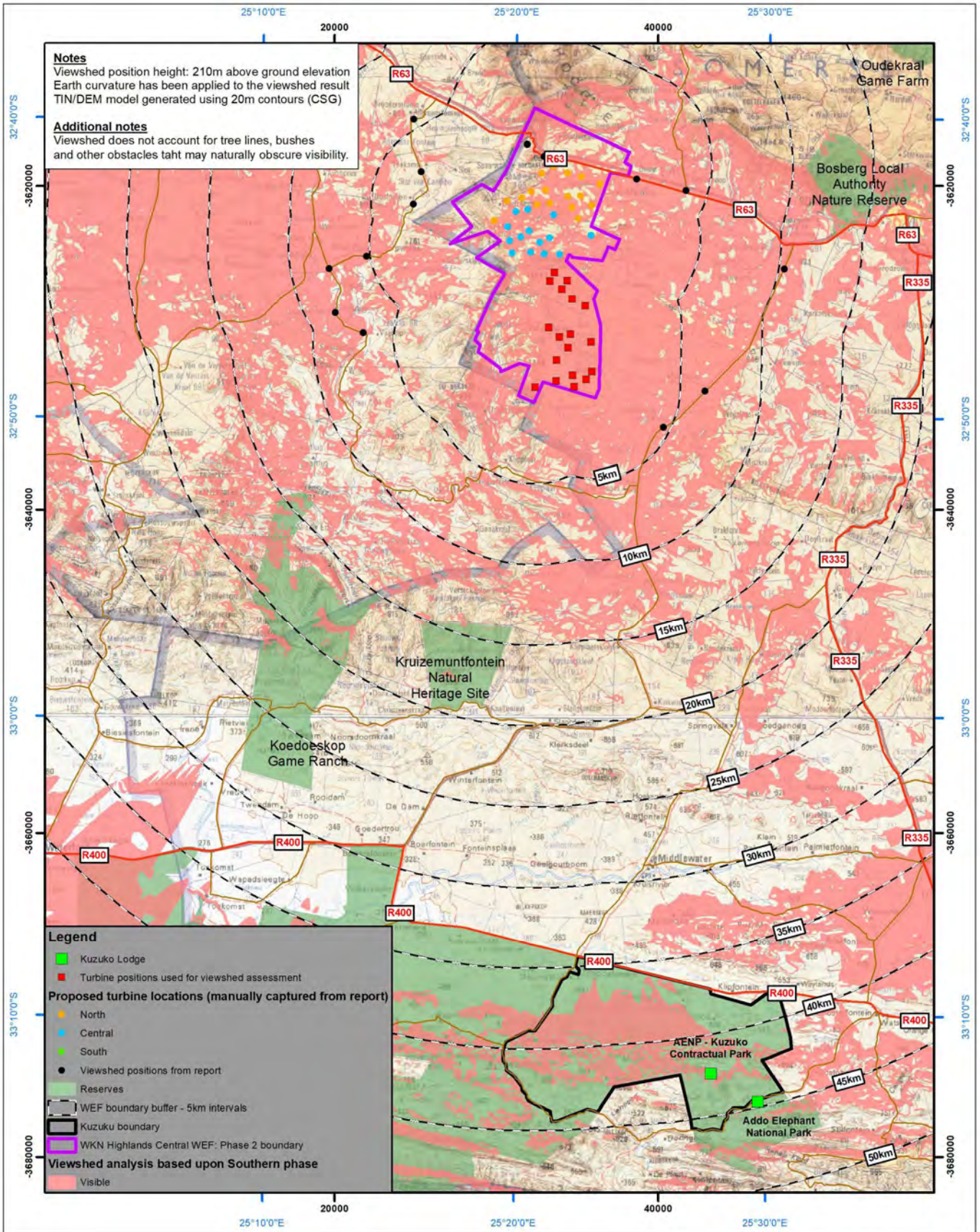
Regards

Chris.



**C.J. Bertie** – Director, Kuzuko Lodge Pty Ltd (Ref. No.: 2004/025392/07)

083 625 4069 PO Box 13285 Humewood 6013  
cbertie@acland.co.za - www.kuzuko.com



**Notes**  
Viewshed position height: 210m above ground elevation  
Earth curvature has been applied to the viewshed result  
TIN/DEM model generated using 20m contours (CSG)

**Additional notes**  
Viewshed does not account for tree lines, bushes  
and other obstacles that may naturally obscure visibility.

- Legend**
- Kuzuko Lodge
  - Turbine positions used for viewshed assessment
  - Proposed turbine locations (manually captured from report)**
  - North
  - Central
  - South
  - Viewshed positions from report
  - Reserves
  - WEF boundary buffer - 5km intervals
  - Kuzuko boundary
  - WKN Highlands Central WEF: Phase 2 boundary
  - Viewshed analysis based upon Southern phase**
  - Visible

Mapping and layout by:

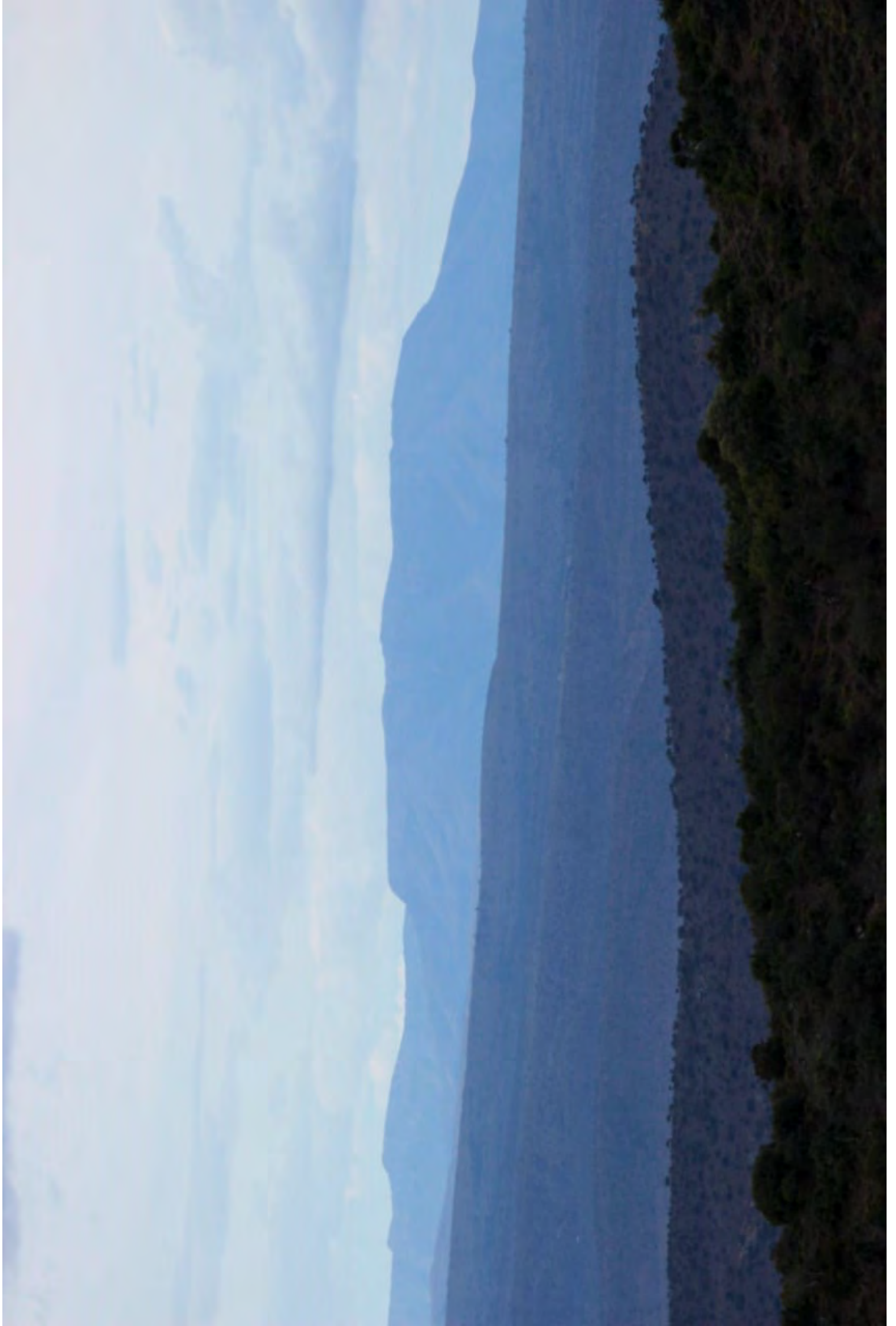


**S3 Technologies** For **BCK**  
Spatial Systems Solutions  
Tel: (023) 342 3981 Fax: (023) 342 3996 email: info@bck.co.za

N  
0 1 2 3 4 5  
Kilometers  
1:300,000  
when printed at A4  
Date of print  
10 December, 2018

**Kuzuko Lodge Viewshed analysis  
to proposed Highlands WEF site boundary**

Projection: Transverse Mercator (W25)  
Datum: Hartebeesthoek 1994  
False Easting: 0  
False Northing: 0  
Central Meridian: 25  
Scale Factor: 1.0000  
Latitude Of Origin: 0.0000  
Units: Meter



## Anja Albertyn

---

**From:** Mariette Liefferink <mariette@pea.org.za>  
**Sent:** 23 November 2018 09:10  
**To:** Highlands  
**Cc:** koos@sutherlamb.co.za; 'Wimpy'  
**Subject:** Notification of Availability of Draft Basic Assessment Reports for Highlands Wind Energy Facilities for Public Comment  
**Attachments:** 1-Highlands-Central-Grid-Draft-BAR.pdf  
**Follow Up Flag:** Follow up  
**Flag Status:** Flagged

Dear Ms Albertyn

I write on behalf of the Federation for a Sustainable Environment (FSE). The FSE is a federation of community based civil society organisations committed to the realisation of the constitutional right to an environment that is not harmful to health or well-being, and to having the environment sustainably managed and protected for future generations.

I refer to the above-mentioned Application and my telephonic discussion with Ms Ashlin Bodasing of Arcus Consultancy Services this morning.

I, on behalf of the FSE, hereby kindly request to be registered as an Interested and Affected Party and to be supplied with the Final BAR when it becomes available.

Best Regards

Mariette Liefferink

CEO: FEDERATION FOR A SUSTAINABLE ENVIRONMENT

TEL. (+27) 11 465 6910

(+27) 73 231 4893

Postnet Suite #113, Private Bag X153, Bryanston, 2021

E-MAIL: mariette@pea.org.za



## Anja Albertyn

---

**From:** Highlands  
**Sent:** 03 December 2018 10:48  
**To:** 'mariette@pea.org.za'  
**Cc:** Highlands  
**Subject:** Highlands WEFS  
**Attachments:** Highlands WEFS\_20180829.kmz

Hi Mariette,

Please find the Highlands kml attached for Google Earth. This should answer your queries about the exact project location.

The project is currently applying for Environmental Authorisation (EA). Should the Department of Environmental Affairs grant the EA, then the developer is able to bid the project to ESKOM in the REIPPP Programme's next bidding round. In each bidding round Eskom allocates a certain amount of MW to wind energy projects, and selects the preferred bidders based on a point system from all nationwide projects that are being bid. We do not know when the next bidding round will take place. We have heard conflicting reports that it can happen as early as March, or as late as 2023.

Please do let me know if the above does not answer all your queries.

Kind Regards,

**Anja Albertyn**  
Environmental Practitioner

---

Tel: +27 (0) 21 412 1529  
Email: [highlands@arcusconsulting.co.za](mailto:highlands@arcusconsulting.co.za)

---

**Arcus**  
Office 220 Cube Workspace  
Cnr Long Street and Hans Strijdom Road  
Cape Town  
8001

---

[www.arcusconsulting.co.za](http://www.arcusconsulting.co.za)

---



## **Anja Albertyn**

---

**From:** Mariette Liefferink <mariette@pea.org.za>  
**Sent:** 03 December 2018 11:02  
**To:** Highlands  
**Subject:** RE: Highlands WEFS

Dear Anja

Receipt acknowledged, with sincere thanks!

Best Regards

Mariette Liefferink

CEO: FEDERATION FOR A SUSTAINABLE ENVIRONMENT

TEL. (+27) 11 465 6910

(+27) 73 231 4893

Postnet Suite #113, Private Bag X153, Bryanston, 2021

E-MAIL: [mariette@pea.org.za](mailto:mariette@pea.org.za)

Fax2Email: 0864861363

---

**From:** Highlands [mailto:Highlands@arcusconsulting.co.za]

**Sent:** 03 December 2018 10:48 AM

**To:** mariette@pea.org.za

**Cc:** Highlands <Highlands@arcusconsulting.co.za>

**Subject:** Highlands WEFS

Hi Mariette,

Please find the Highlands kml attached for Google Earth. This should answer your queries about the exact project location.

The project is currently applying for Environmental Authorisation (EA). Should the Department of Environmental Affairs grant the EA, then the developer is able to bid the project to ESKOM in the REIPPP Programme's next bidding round. In each bidding round Eskom allocates a certain amount of MW to wind energy projects, and selects the preferred bidders based on a point system from all nationwide projects that are being bid. We do not know when the next bidding round will take place. We have heard conflicting reports that it can happen as early as March, or as late as 2023.

Please do let me know if the above does not answer all your queries.

Kind Regards,

**Anja Albertyn**

Environmental Practitioner

---

Tel: +27 (0) 21 412 1529

Email: [highlands@arcusconsulting.co.za](mailto:highlands@arcusconsulting.co.za)

---

**Arcus**

Office 220 Cube Workspace

Cnr Long Street and Hans Strijdom Road

Cape Town

8001

---

[www.arcusconsulting.co.za](http://www.arcusconsulting.co.za)

## Anja Albertyn

---

**From:** Mariette Liefferink <mariette@pea.org.za>  
**Sent:** 07 December 2018 18:09  
**To:** Highlands  
**Subject:** RE: Highlands WEFS

Noted, with sincere thanks.

Best Regards  
Mariette Liefferink  
CEO: FEDERATION FOR A SUSTAINABLE ENVIRONMENT  
TEL. (+27) 11 465 6910  
(+27) 73 231 4893  
Postnet Suite #113, Private Bag X153, Bryanston, 2021  
E-MAIL: [mariette@pea.org.za](mailto:mariette@pea.org.za)  
Fax2Email: 0864861363

---

**From:** Highlands [mailto:Highlands@arcusconsulting.co.za]  
**Sent:** 06 December 2018 04:17 PM  
**To:** Mariette Liefferink <mariette@pea.org.za>; Highlands <Highlands@arcusconsulting.co.za>  
**Subject:** RE: Highlands WEFS

Dear Mariette,

The proposed Highlands Wind Energy Facilities are not located on top of a mountain range. The lower reaches of the Groot Bruintjieshoogte mountain range are located approximately 2- km to the north of the proposed development site. The land parcels that constitute the development site are located on the lower lying areas (foothills) south of the Groot Bruintjieshoogte mountain range. Please see the attached map which shows the mountain range in the north (dark brown 1500 – 1750 m above mean sea level) and the turbine locations at an elevation of between 750 and 1250 m above mean sea level to the south of the mountain range.

Please let me know should this not fully answer your query.

Kind Regards, Anja

---

**From:** Mariette Liefferink [<mailto:mariette@pea.org.za>]  
**Sent:** 03 December 2018 18:33  
**To:** Highlands <[Highlands@arcusconsulting.co.za](mailto:Highlands@arcusconsulting.co.za)>  
**Subject:** FW: Highlands WEFS  
**Importance:** High

Dear Anja

I apologise for the fragmented requests.

I also thank you for the Google map. It was helpful.

However, in order for us to ascertain with certainty whether or not we should object to the proposed project, can you please confirm on exactly which mountain range the windfarm is to be built. It is assumed that you as the EAP will be very familiar with the area and the mountain range where the proposed wind farm is to be established.

Best Regards

Mariette Liefferink

CEO: FEDERATION FOR A SUSTAINABLE ENVIRONMENT

TEL. (+27) 11 465 6910

(+27) 73 231 4893

Postnet Suite #113, Private Bag X153, Bryanston, 2021

E-MAIL: [mariette@pea.org.za](mailto:mariette@pea.org.za)

Fax2Email: 0864861363

## Anja Albertyn

---

**From:** Highlands  
**Sent:** 10 December 2018 10:25  
**To:** Hylton; Highlands  
**Cc:** Highlands  
**Subject:** RE: Highlands WEF | Register IAP

Dear Hylton,

That is correct. The National Department of Environmental Affairs is the Competent Authority for RE Developments. Comment from the provincial DEDEAT is however required as well.

Please let me know if you have any further queries.

Kind Regards,

**Anja Albertyn**  
Environmental Practitioner

---

Tel: +27 (0) 21 412 1529  
Email: [highlands@arcusconsulting.co.za](mailto:highlands@arcusconsulting.co.za)

**Arcus**  
Office 220 Cube Workspace  
Cnr Long Street and Hans Strijdom Road  
Cape Town  
8001

---

[www.arcusconsulting.co.za](http://www.arcusconsulting.co.za)



---

**From:** Hylton [<mailto:hylton@windrelic.net>]  
**Sent:** 10 December 2018 10:01  
**To:** Highlands <[Highlands@arcusconsulting.co.za](mailto:Highlands@arcusconsulting.co.za)>  
**Subject:** RE: Highlands WEF | Register IAP

Dear Anja,

Thank you for your prompt response.

Regarding process, with the WEF being in a Gazetted REDZ area, therefore undertaking a BAR, is the application still submitted to DEAT due to it being an RE development, and therefore DEDEAT is not the responsible authority? As by norm DEDEAT is the responsible authority for BAR applications.

Kind regards

**Hylton Newcombe, MSc**  
**Director – Technical**

**WIND RELIC (Pty) Ltd**

54 Thomas Road, Walmer, 6070, Port Elizabeth, Eastern Cape South Africa

☎: +27 (83) 395 8179 | ✉: [hylton@windrelic.net](mailto:hylton@windrelic.net) | 🌐: hyltonnewcombe



---

**From:** Highlands <[Highlands@arcusconsulting.co.za](mailto:Highlands@arcusconsulting.co.za)>  
**Sent:** Monday, 10 December 2018 09:46  
**To:** Hylton <[hylton@windrelic.net](mailto:hylton@windrelic.net)>; Highlands <[Highlands@arcusconsulting.co.za](mailto:Highlands@arcusconsulting.co.za)>  
**Cc:** Highlands <[Highlands@arcusconsulting.co.za](mailto:Highlands@arcusconsulting.co.za)>  
**Subject:** RE: Highlands WEF | Register IAP

Dear Hylton,

You have been registered as an I&AP and will receive notifications regarding the progress of the Highlands wind energy facilities project. The final Basic Assessment Reports will be submitted to the Department of Environmental Affairs by 9 January 2019.

Kind Regards,

**Anja Albertyn**  
Environmental Practitioner

---

Tel: +27 (0) 21 412 1529  
Email: [highlands@arcusconsulting.co.za](mailto:highlands@arcusconsulting.co.za)

**Arcus**  
Office 220 Cube Workspace  
Cnr Long Street and Hans Strijdom Road  
Cape Town  
8001

---

[www.arcusconsulting.co.za](http://www.arcusconsulting.co.za)



---

**From:** Hylton [<mailto:hylton@windrelic.net>]  
**Sent:** 10 December 2018 09:22  
**To:** Highlands <[Highlands@arcusconsulting.co.za](mailto:Highlands@arcusconsulting.co.za)>  
**Subject:** Highlands WEF | Register IAP  
**Importance:** High

Dear Anja Albertyn

Please would you register me as an IAP for the above project

Kind regards

**Hylton Newcombe, MSc**  
**Director – Technical**

**WIND RELIC (Pty) Ltd**

54 Thomas Road, Walmer, 6070, Port Elizabeth, Eastern Cape South Africa

☎ :+27 (83) 395 8179 | ✉ : [hylton@windrelic.net](mailto:hylton@windrelic.net) | 📱 : hyltonnewcombe



## Anja Albertyn

---

**From:** Veronique Fyfe <veronique@g7energies.com>  
**Sent:** 14 December 2018 10:02  
**To:** Highlands  
**Subject:** Re: Highlands Projects

**Follow Up Flag:** Follow up  
**Flag Status:** Completed

Many thanks.

Veronique Fyfe | Project Manager  
G7 Renewable Energies (Pty) Ltd

5th Floor, [125 Buitengracht Street](#)  
[Cape Town 8001, South Africa](#)  
[+27 82 825 6069](#) (Mobile)  
[+27 21 300 0610](#) (Office)  
[+27 21 300 0613](#) (direct Extension)  
[+27 86 514 1735](#) (Fax)  
[www.g7energies.com](http://www.g7energies.com)

On Fri, 14 Dec 2018 at 09:46, Highlands <[Highlands@arcusconsulting.co.za](mailto:Highlands@arcusconsulting.co.za)> wrote:

Hi Veronique,

You have been added to the I&AP database and will receive notifications regarding the project progress.

Regards,

**Anja Albertyn**

Environmental Practitioner

---

Tel: +27 (0) 21 412 1529

Email: [highlands@arcusconsulting.co.za](mailto:highlands@arcusconsulting.co.za)



---

**Arcus**

Office 220 Cube Workspace

Cnr Long Street and Hans Strijdom Road

Cape Town

8001

---

[www.arcusconsulting.co.za](http://www.arcusconsulting.co.za)



**From:** Veronique Fyfe [mailto:[veronique@g7energies.com](mailto:veronique@g7energies.com)]

**Sent:** 13 December 2018 15:55

**To:** Highlands <[Highlands@arcusconsulting.co.za](mailto:Highlands@arcusconsulting.co.za)>

**Subject:** Highlands Projects

Hi Anja Albertyn;

Please could you register myself as an I&AP on the Highlands WEF and grid connection project. Please register me with the email address [eia@g7energies.com](mailto:eia@g7energies.com).

Thank you in anticipation.

Veronique Fyfe | Project Manager  
G7 Renewable Energies (Pty) Ltd

5th Floor, [125 Buitengracht Street](#)  
[Cape Town 8001, South Africa](#)  
[+27 82 825 6069](#) (Mobile)  
[+27 21 300 0610](#) (Office)  
[+27 21 300 0613](#) (direct Extension)  
[+27 86 514 1735](#) (Fax)  
[www.g7energies.com](http://www.g7energies.com)

**IN SUPPORT OF HIGHLANDS WIND FARM**

1. The agricultural specialists report indicates that the land in question is only suitable for low-intensity grazing or wind farm development. When Mr Andre van der Spuy, **(who legally represents those who object to the wind farm)** questions why the land has not been considered for game related farming, he interprets low-intensity grazing as applying to domestic livestock and evidently not to game. Low intensity grazing (and, to a lesser extent, browsing) would apply to both domestic as well as wild animals. The agricultural specialist report does, therefore, include game farming as a viable enterprise for the area.
2. Mr Van der Spuy's question regarding game farming can be interpreted as suggesting that, by farming game, landowners would be making 'better' use of the land, and would not be enticed by the financial gains of wind farming. To begin with, there are a number of financial reasons, why landowners may not farm game:
  - (i) Some of the land is government owned. Emerging farmers assigned to this land do not have title to this land, and, as such, cannot use the land as collateral, nor do they have the capital or expertise to go into such a venture.
  - (ii) Some are dedicated livestock owners who do not wish to farm game.
  - (iii) Some game farmers entered the industry many years ago and are well established. It is inevitably more difficult for farmers who are not in the industry to enter the industry successfully.
  - (iv) I am personally aware of a farmer who, having returned home to farm some 5 years ago, decided to increase the farms viability by dedicating part of the farm to high-value game. The colour variant of the species in question was initially valued at R480 000 per unit. Now, 5 years later, this colour variant is valued at about R10 000 per unit. Such collapses in the market value are obviously a deterrent to many who have entertained the idea of some form of game farming. Needless to say, I am one of these.
- 3 There are also ecological reasons why a landowner may not farm game:
  - (i) In the past, game would move over vast areas as they followed the change of season and rainfall patterns. Today, it is acknowledged that completely intact

ecological systems are basically non-existent. At 2 million hectares, even the Kruger National Park has its problems, and the concept of trans-border parks was initiated to help with this. So what of the average game farm of, say, 5000ha? It is widely acknowledged that the long-term viability of a farm is dependent on the integrity of the soil and vegetation, and that animals need to be managed in such a way as to minimise negative impact through poor grazing practices such as under, over and selective grazing. Domestic livestock can be easily rotated from one camp to another allowing for adequate recovery of the vegetation. In some areas, this, coupled with the use of fire and the adaptive use of supplementary feeding where needed, can allow for the integrity of the land to be preserved in the long-term. Game, on the other hand, cannot be rotated and controlled to the same degree. The impact of long-term selective grazing by game is often very visible in areas where such farming adjoins livestock farming. The game farming areas often show a marked scarcity of grass, with a dominance of less palatable 'increaser' species (pictures available).

- (ii) Where the game is intensively managed, the degradation within the small camped areas can be extreme and is self-evident. This is common with particularly valuable animals.
- (iii) Arid and semi-arid areas are particularly susceptible to degradation. This includes the Highlands region.

4 Inevitably, a landowner's interest in the land-use of an area is heavily determined by financial values. I must point out that I had initially tried to farm sheep on my property but had to give up because of excessive losses to predators that were either not controlled on some properties in the vicinity, or controlled to a minor extent. I had no recourse to this problem but to switch to farming cattle, which is far less profitable. While I have not objected to land owners getting on with their respective enterprises even though some of their enterprises have had a negative financial effect on me, the point is that some land owners do object to the wind farm. It would seem that they feel that the wind farm would negatively affect their clientele who want an aesthetically pleasing African experience.

- 5 If wind farms are an aesthetic problem, then I would suggest that such a land owner starts in his/her back yard. Animals and plants that are foreign to that area are invariably held as a deviation from authenticity and aesthetics by many who are in the know. While most properties have exotic species, it is the conscious planting of exotics – some even prohibited – that I point to. If the clientele on a game farm do not object to the presence of out-of-range South African species, completely foreign species, or an avenue of exotic conifers, why should the landowner or the clientele be concerned about wind turbines which are arguably less intrusive than large pylons? I am also aware that visiting hunters very frequently do not hunt in what would be termed zxcan aesthetically pleasing manner – certainly, the purist would decry any hunting that does not involve ‘fair chase’. Why would such hunting clientele – and land owners who provide such hunting - be concerned about wind turbines?
- 6 The security of the supply of electricity is crucial to our economy, and we surely have an interest in our local economy. The proposed wind farm would be a major contributor to the security of electricity. Such wind turbines are found in many parts of the world and are an attempt to be environmentally sound through lowered carbon emissions.
- 7 The security of food is also crucial to our economy. Wind farming is compatible with livestock farming, as is evident in the Cookhouse area. While it may be that the erection of the wind turbines may lower the overall carrying capacity of the areas slightly due to access roads and the space at the base of the turbines, I make the point that game farming is a minor contributor to food security.
- 8 While some who object to the wind farm may be established farmers who run significant enterprises, others may have ‘lifestyle’ farms of little or no productivity. These people may not even be around in the long-term. Their decision may have significant effect on commercial farmers who are making good use of their land. In what way is their ‘vote’ justified?
- 9 Should foreigners who own land object to the local land owners adding to the power supply of the country?

In other areas I am told that game farmers have not objected to wind farms. An Environmental Impact Assessment on the Highlands site has already determined that, due to environmental reasons, the turbines should not be erected at the higher elevation, but that they be erected lower down where their visibility would be less obvious. I feel that the points detailed above show very clearly that the wind farm is a positive initiative.

**Bill Brown**

## Anja Albertyn

---

**From:** Side by Side Safaris <info@sidebysidesafaris.com>  
**Sent:** 13 August 2018 09:31  
**To:** Jasper Dick  
**Cc:** grant@eastcapesafaris.co.za; hennieeb@gmail.com; fritz@woodline.co.za; mail@malpepo.com; David Wolfromm; Cassie Lotter  
**Subject:** Re: Proposed Highlands Wind Energy Facility

Morning Jasper

Attached that 8 there are missing.

Hein Badenhorst  
[sillery@jafrika.com](mailto:sillery@jafrika.com)

Kevin Mccaughey  
[kevin@bosberg.co.za](mailto:kevin@bosberg.co.za)

Mornay Schafer  
[mornays@infinitetax.co.za](mailto:mornays@infinitetax.co.za)

Michael Puren  
[julitap@jabama.co.za](mailto:julitap@jabama.co.za).

Allan Hobson  
[alan@anglerandantelope.com](mailto:alan@anglerandantelope.com).

Gideon Meiring  
[gideoncmeiring@gmail.com](mailto:gideoncmeiring@gmail.com)

Jannie Geyer  
[jwgeyer@eastcape.net](mailto:jwgeyer@eastcape.net).

Paul Jordaan  
[paul@bosberg.co.za](mailto:paul@bosberg.co.za)

Regards  
Flemming Georg Jensen

Den 13. aug. 2018 kl. 09.15 skrev Jasper Dick <[jasper@wkn-windcurrent.com](mailto:jasper@wkn-windcurrent.com)>:

Good morning

Thank you all for attending the meeting regarding the proposed development of the Highlands Wind Energy Facility at the Angler & Antelope last Wednesday evening.

The independent Environmental Impact Assessment Practitioner will inform you in due course when the public participation phase will begin, and how to submit comments and queries.

Please can you assist us by sending us the email addresses for the following people who also attended the meeting, as well as any others we might have missed?

- Hein Badenhorst & C. Cleaver of Kamala Game Reserve
- Mornay Schafer
- Michael Purew of Gonakraal

Best regards,

Jasper Dick

**WKN Windcurrent SA (Pty) Ltd**

Reg 2010 / 022616 / 07

VAT nr: 4850258239

PO BOX 762

Wilderness

6560

Mob +27 60 993 8586

[jasper@wkn-windcurrent.com](mailto:jasper@wkn-windcurrent.com)

[www.wkn-ag.de](http://www.wkn-ag.de)

The information contained in this email (including any attachments) is confidential. It is for sole use of the intended recipient. Any review, reliance or distribution by others or forwarding without express permission is strictly prohibited. If you are not the intended recipient, please contact the sender and delete all copies.



## Anja Albertyn

---

**From:** Side by Side Safaris <info@sidebysidesafaris.com>  
**Sent:** 01 August 2018 10:27  
**To:** Jasper Dick  
**Subject:** Re: Side by Side Safaris - Proposed Meeting with Wind Energy Facility Developers  
WKN-Windcurrent

Hi Jasper

Thank you, see you.

Best Regards  
Flemming

Den 31. jul. 2018 kl. 16.48 skrev Jasper Dick <[jasper@wkn-windcurrent.com](mailto:jasper@wkn-windcurrent.com)>:

Good afternoon Flemming

We can now confirm that WKN-Windcurrent will be present at the meeting at the Angler & Antelope at 4pm on Wednesday 8 August. We look forward to meeting you!

Best regards,  
Jasper Dick  
**WKN Windcurrent SA (Pty) Ltd**  
Reg 2010 / 022616 / 07  
VAT nr: 4850258239

PO BOX 762  
Wilderness  
6560  
Mob +27 60 993 8586  
[jasper@wkn-windcurrent.com](mailto:jasper@wkn-windcurrent.com)  
[www.wkn-ag.de](http://www.wkn-ag.de)

The information contained in this email (including any attachments) is confidential. It is for sole use of the intended recipient. Any review, reliance or distribution by others or forwarding without express permission is strictly prohibited. If you are not the intended recipient, please contact the sender and delete all copies.

## Anja Albertyn

---

**From:** Side by Side Safaris <info@sidebysidesafaris.com>  
**Sent:** 27 July 2018 16:09  
**To:** Jasper Dick  
**Subject:** Re: Side by Side Safaris - Proposed Meeting with Wind Energy Facility Developers  
WKN-Windcurrent

Hi Jasper

I have set up a meeting with my surrounding landowners that has concerns about your project.

If you want to talk to us, the meeting will be held at Angler and Antilope, (2 College Road) Somerset East, Wednesday the 8 of august 16.00 PM.

Please let me know if you want to talk to us.

Best Regards  
Flemming Georg Jensen

Den 25. jul. 2018 kl. 16.03 skrev Jasper Dick <[jasper@wkn-windcurrent.com](mailto:jasper@wkn-windcurrent.com)>:

Dear Flemming Jensen

Thank you for speaking to me earlier.

As discussed, WKN-Windcurrent SA (Pty) Ltd is proposing the development of a wind energy facility between Highlands farm and the R63. The farms that have been earmarked for development are all located within one the gazetted "Renewable Energy Development Zones".

We will be visiting the area in mid-August, and would like to propose meeting with you at the Side by Side Safaris Lodge, in order to explain the proposed Project and receive feedback from you. During our call you mentioned that you are aware of other surrounding landowners that may have concerns about the Project, and we'd like to encourage you to invite them to meet with us at the same time?

Please can you propose a time that you would be available to meet between 14-16 August 2018?

Best regards,  
Jasper Dick  
**WKN Windcurrent SA (Pty) Ltd**  
Reg 2010 / 022616 / 07  
VAT nr: 4850258239

PO BOX 762  
Wilderness  
6560  
Mob +27 60 993 8586  
[jasper@wkn-windcurrent.com](mailto:jasper@wkn-windcurrent.com)  
[www.wkn-ag.de](http://www.wkn-ag.de)

The information contained in this email (including any attachments) is confidential. It is for sole use of the intended recipient. Any review, reliance or distribution by others or forwarding without express permission is strictly prohibited. If you are not the intended recipient, please contact the sender and delete all copies.