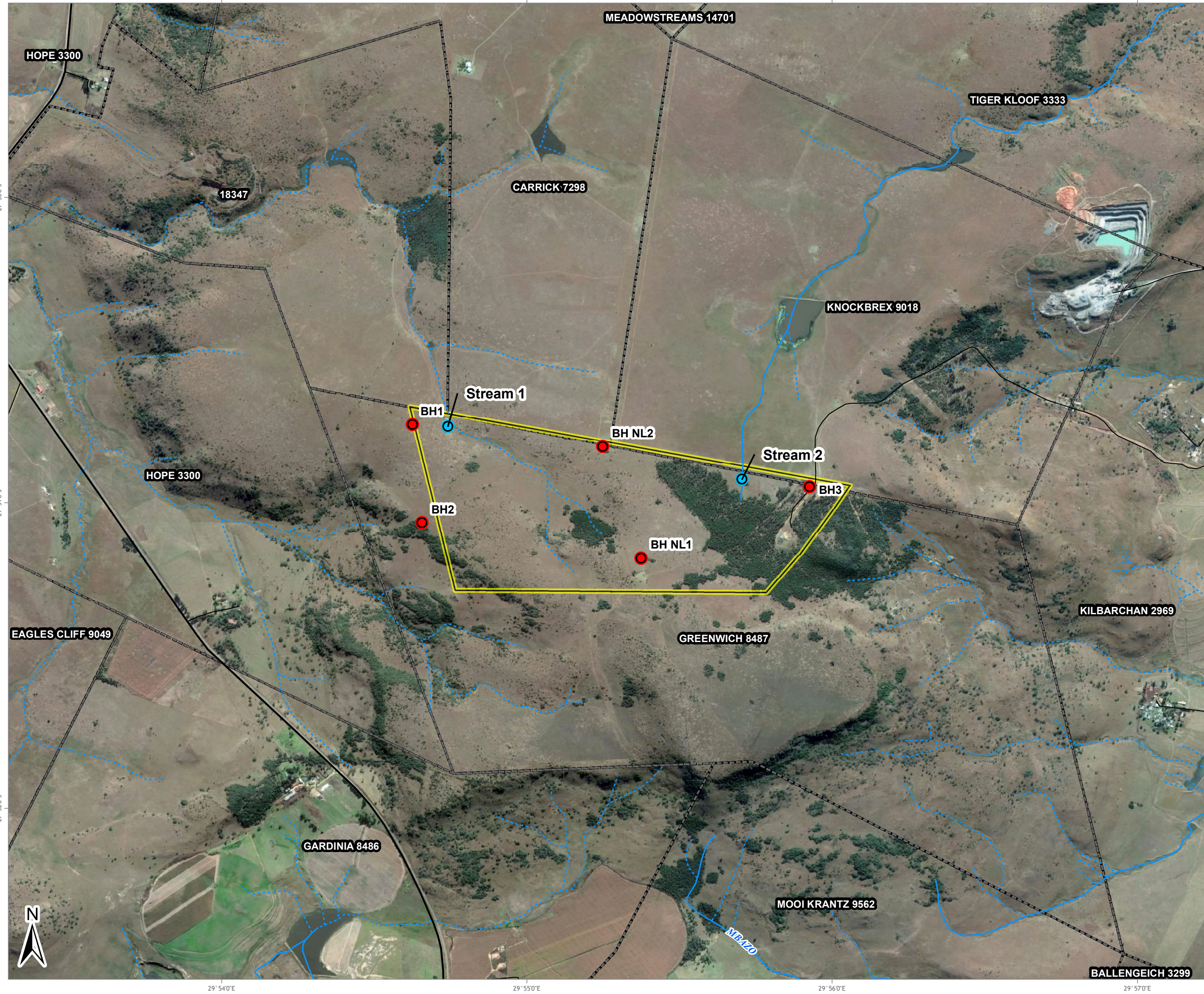


NEWCASTLE LANDFILL SITE: PROPOSAL MONITORING POINTS



LEGEND

- Borehole monitoring points
 - Surface water monitoring points
- Road Network**
- ▬▬▬ National Route
 - ▬▬▬ Main Road
 - ▬▬▬ Secondary Road
 - ▬▬▬ Street
- Rivers and Streams**
- ⋯⋯⋯ Non-Perennial
 - ▬▬▬ Perennial
 - Parent farms
 - Site Boundary



Data Sources:
 Google Earth™ mapping service: 2018
 Imagery Date: 22/05/2017

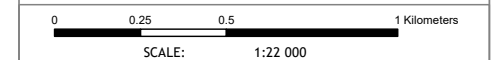


FIGURE NO.:	MAP NUMBER: 17-0212-16
DRAWN BY: A BROWER GIS TECHNICIAN	REVIEWED BY: P CHETTY GIS SPECIALIST
DATUM: WGS84 PROJECTION: GEOGRAPHIC	DATE: 04 APRIL 2018
PROJECT: NEWCASTLE LANDFILL SITE EIA CLIENT: ENVITECH SOLUTIONS	

63 Wessel Road Woodmead
 PO Box 2597 Rivonia 2128
 South Africa
 Tel: +27 (0) 11 803 5726
 Fax: +27 (0) 11 803 5745
 E-mail: jhb@gcs-sa.biz
 www.gcs-sa.biz