

**SCREENING REPORT FOR AN ENVIRONMENTAL AUTHORIZATION AS  
REQUIRED BY THE 2014 EIA REGULATIONS – PROPOSED DEVELOPMENT  
FOOTPRINT ENVIRONMENTAL SENSITIVITY**

**EIA Reference number:**

**Project name:** Bakubung Platinum Mine

**Project title:** Bakubung New TSF

**Date screening report generated:** 01/02/2021 18:30:07

**Applicant:** Bakubung Minerals (Pty) Ltd

**Compiler:** Tania Oosthuizen

**Compiler signature:**



.....

**Application Category:** Mining|Mining Right

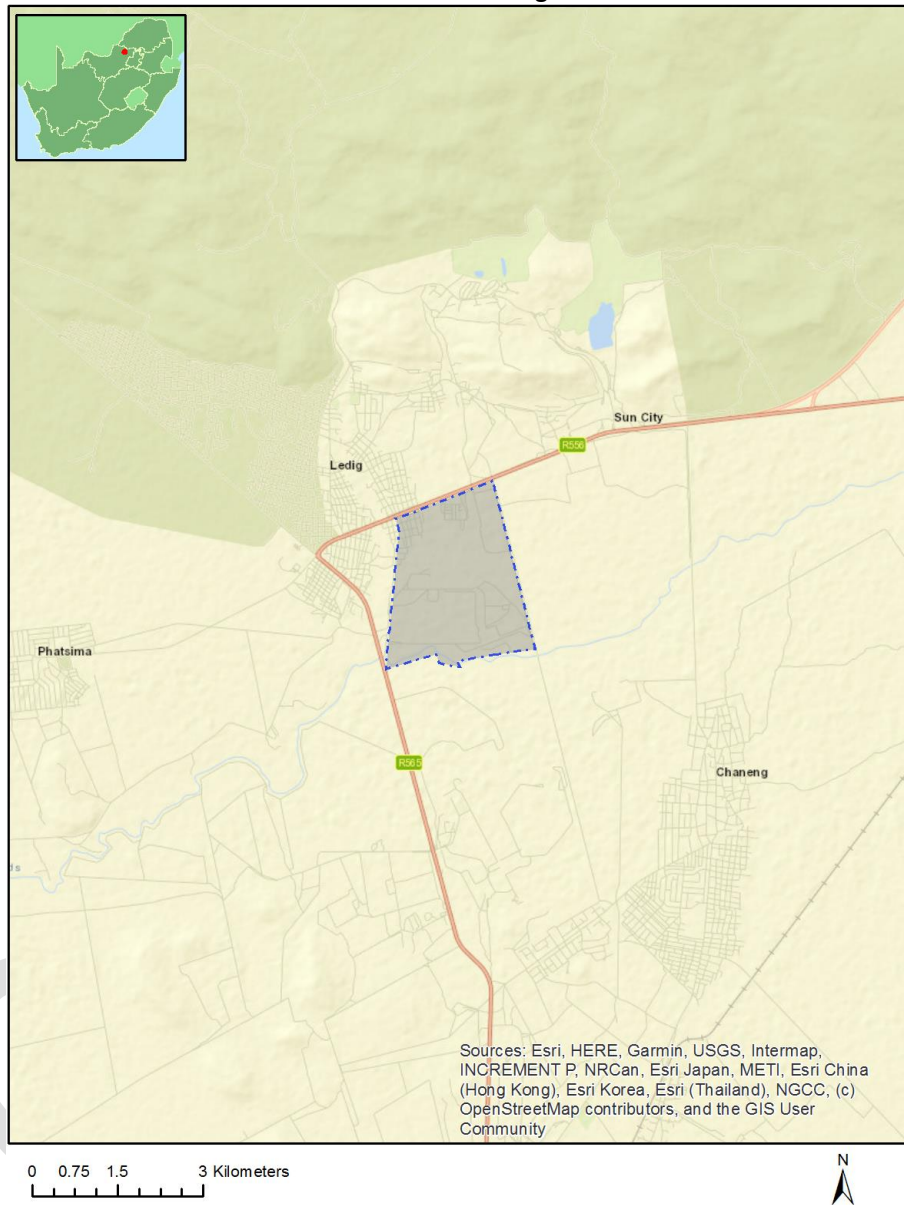
## Table of Contents

Proposed Project Location .....	3
Orientation map 1: General location .....	3
Map of proposed site and relevant area(s) .....	4
Cadastral details of the proposed site .....	4
Wind and Solar developments with an approved Environmental Authorisation or applications under consideration within 30 km of the proposed area .....	11
Environmental Management Frameworks relevant to the application .....	11
Environmental screening results and assessment outcomes .....	11
Relevant development incentives, restrictions, exclusions or prohibitions .....	12
Map indicating proposed development footprint within applicable development incentive, restriction, exclusion or prohibition zones .....	13
Proposed Development Area Environmental Sensitivity .....	13
Specialist assessments identified .....	14
Results of the environmental sensitivity of the proposed area .....	16
MAP OF RELATIVE AGRICULTURE THEME SENSITIVITY .....	16
MAP OF RELATIVE ANIMAL SPECIES THEME SENSITIVITY .....	17
MAP OF RELATIVE AQUATIC BIODIVERSITY THEME SENSITIVITY .....	18
MAP OF RELATIVE ARCHAEOLOGICAL AND CULTURAL HERITAGE THEME SENSITIVITY .....	19
MAP OF RELATIVE CIVIL AVIATION THEME SENSITIVITY .....	20
MAP OF RELATIVE DEFENCE THEME SENSITIVITY .....	21
MAP OF RELATIVE PALEONTOLOGY THEME SENSITIVITY .....	22
MAP OF RELATIVE PLANT SPECIES THEME SENSITIVITY .....	23
MAP OF RELATIVE TERRESTRIAL BIODIVERSITY THEME SENSITIVITY .....	24

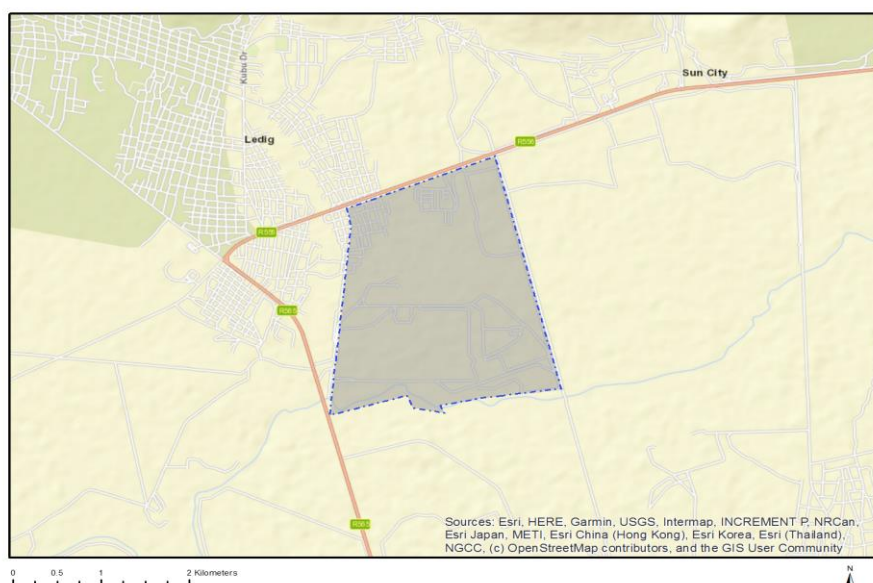
# Proposed Project Location

## Orientation map 1: General location

**General Orientation: Bakubung Platinum Mine**



## Map of proposed site and relevant area(s)



## Cadastral details of the proposed site

Property details:

No	Farm Name	Farm/ Erf No	Portion	Latitude	Longitude	Property Type
1	GABONEWE ESTATE	9	0	25°22'15.2S	27°4'48.25E	Erven
2	GABONEWE ESTATE	10	0	25°22'15.8S	27°4'48.23E	Erven
3	GABONEWE ESTATE	27	0	25°22'15.78S	27°4'50.26E	Erven
4	GABONEWE ESTATE	33	0	25°22'16.23S	27°4'53.12E	Erven
5	GABONEWE ESTATE	36	0	25°22'16.25S	27°4'54.19E	Erven
6	GABONEWE ESTATE	40	0	25°22'16.78S	27°4'53.84E	Erven
7	GABONEWE ESTATE	55	0	25°22'17.76S	27°4'53.84E	Erven
8	GABONEWE ESTATE	65	0	25°22'18.27S	27°4'52.03E	Erven
9	GABONEWE ESTATE	82	0	25°22'19.83S	27°4'53.15E	Erven
10	GABONEWE ESTATE	87	0	25°22'19.84S	27°4'51.33E	Erven
11	GABONEWE ESTATE	97	0	25°22'21.41S	27°4'53.44E	Erven
12	GABONEWE ESTATE	98	0	25°22'21.41S	27°4'52.9E	Erven
13	GABONEWE ESTATE	101	0	25°22'21.41S	27°4'51.44E	Erven
14	GABONEWE ESTATE	102	0	25°22'22.47S	27°4'51.39E	Erven
15	GABONEWE ESTATE	116	0	25°22'16.27S	27°4'55.59E	Erven

16	GABONEWE ESTATE	117	0	25°22'16.91S	27°4'55.64E	Erven
17	GABONEWE ESTATE	132	0	25°22'19.84S	27°4'56.4E	Erven
18	GABONEWE ESTATE	138	0	25°22'16.32S	27°4'56.4E	Erven
19	GABONEWE ESTATE	151	0	25°22'16.44S	27°4'59.88E	Erven
20	GABONEWE ESTATE	154	0	25°22'17.67S	27°5'0.67E	Erven
21	GABONEWE ESTATE	170	0	25°22'24.84S	27°4'59.14E	Erven
22	GABONEWE ESTATE	173	0	25°22'26.61S	27°4'59.18E	Erven
23	GABONEWE ESTATE	177	0	25°22'28.95S	27°4'59.22E	Erven
24	GABONEWE ESTATE	6	0	25°22'14.58S	27°4'50.1E	Erven
25	GABONEWE ESTATE	7	0	25°22'14.81S	27°4'49.53E	Erven
26	GABONEWE ESTATE	14	0	25°22'18.18S	27°4'48.27E	Erven
27	GABONEWE ESTATE	15	0	25°22'15.9S	27°4'49.59E	Erven
28	GABONEWE ESTATE	22	0	25°22'18.86S	27°4'50.27E	Erven
29	GABONEWE ESTATE	24	0	25°22'17.7S	27°4'50.27E	Erven
30	GABONEWE ESTATE	25	0	25°22'17.1S	27°4'50.24E	Erven
31	GABONEWE ESTATE	39	0	25°22'16.77S	27°4'54.23E	Erven
32	GABONEWE ESTATE	45	0	25°22'16.75S	27°4'52.03E	Erven
33	GABONEWE ESTATE	48	0	25°22'17.81S	27°4'51.34E	Erven
34	GABONEWE ESTATE	66	0	25°22'18.29S	27°4'51.67E	Erven
35	GABONEWE ESTATE	67	0	25°22'18.29S	27°4'51.28E	Erven
36	GABONEWE ESTATE	83	0	25°22'19.82S	27°4'52.79E	Erven
37	GABONEWE ESTATE	92	0	25°22'20.85S	27°4'53.47E	Erven
38	GABONEWE ESTATE	94	0	25°22'20.87S	27°4'54.54E	Erven
39	GABONEWE ESTATE	99	0	25°22'21.4S	27°4'52.39E	Erven
40	GABONEWE ESTATE	109	0	25°22'23S	27°4'54.55E	Erven
41	GABONEWE ESTATE	156	0	25°22'17.67S	27°4'59.63E	Erven
42	GABONEWE ESTATE	186	0	25°22'28.32S	27°5'1.27E	Erven
43	GABONEWE ESTATE	188	0	25°22'27.18S	27°5'1.22E	Erven
44	GABONEWE ESTATE	191	0	25°22'25.47S	27°5'1.19E	Erven
45	GABONEWE ESTATE	192	0	25°22'24.91S	27°5'1.17E	Erven
46	GABONEWE	3	0	25°22'14.72S	27°4'51.48E	Erven

	ESTATE					
47	GABONEWE ESTATE	8	0	25°22'15S	27°4'48.91E	Erven
48	GABONEWE ESTATE	17	0	25°22'17.09S	27°4'49.46E	Erven
49	GABONEWE ESTATE	21	0	25°22'19.6S	27°4'50.08E	Erven
50	GABONEWE ESTATE	23	0	25°22'18.27S	27°4'50.31E	Erven
51	GABONEWE ESTATE	30	0	25°22'16.28S	27°4'52.09E	Erven
52	GABONEWE ESTATE	37	0	25°22'16.28S	27°4'54.61E	Erven
53	GABONEWE ESTATE	52	0	25°22'17.8S	27°4'52.79E	Erven
54	GABONEWE ESTATE	63	0	25°22'18.29S	27°4'52.78E	Erven
55	GABONEWE ESTATE	71	0	25°22'19.32S	27°4'52.43E	Erven
56	GABONEWE ESTATE	78	0	25°22'19.81S	27°4'54.56E	Erven
57	GABONEWE ESTATE	115	0	25°22'22.98S	27°4'51.37E	Erven
58	GABONEWE ESTATE	122	0	25°22'19.76S	27°4'55.57E	Erven
59	GABONEWE ESTATE	123	0	25°22'20.35S	27°4'55.64E	Erven
60	GABONEWE ESTATE	126	0	25°22'22.16S	27°4'55.67E	Erven
61	GABONEWE ESTATE	129	0	25°22'21.6S	27°4'56.36E	Erven
62	GABONEWE ESTATE	130	0	25°22'21S	27°4'56.38E	Erven
63	GABONEWE ESTATE	131	0	25°22'20.46S	27°4'56.39E	Erven
64	GABONEWE ESTATE	178	0	25°22'24.27S	27°5'0.55E	Erven
65	GABONEWE ESTATE	180	0	25°22'25.35S	27°5'0.48E	Erven
66	GABONEWE ESTATE	190	0	25°22'26.02S	27°5'1.23E	Erven
67	GABONEWE ESTATE	4	0	25°22'14.06S	27°4'51.47E	Erven
68	GABONEWE ESTATE	11	0	25°22'16.4S	27°4'48.22E	Erven
69	GABONEWE ESTATE	19	0	25°22'18.31S	27°4'49.5E	Erven
70	GABONEWE ESTATE	31	0	25°22'16.28S	27°4'52.44E	Erven
71	GABONEWE ESTATE	41	0	25°22'16.78S	27°4'53.51E	Erven
72	GABONEWE ESTATE	43	0	25°22'16.77S	27°4'52.75E	Erven
73	GABONEWE ESTATE	58	0	25°22'18.28S	27°4'54.58E	Erven
74	GABONEWE ESTATE	60	0	25°22'18.29S	27°4'53.84E	Erven
75	GABONEWE ESTATE	69	0	25°22'19.3S	27°4'51.73E	Erven
76	GABONEWE ESTATE	72	0	25°22'19.32S	27°4'52.74E	Erven

77	GABONEWE ESTATE	81	0	25°22'19.86S	27°4'53.46E	Erven
78	GABONEWE ESTATE	84	0	25°22'19.86S	27°4'52.41E	Erven
79	GABONEWE ESTATE	90	0	25°22'20.85S	27°4'52.43E	Erven
80	GABONEWE ESTATE	96	0	25°22'21.41S	27°4'53.98E	Erven
81	GABONEWE ESTATE	106	0	25°22'22.44S	27°4'53.49E	Erven
82	GABONEWE ESTATE	110	0	25°22'23.02S	27°4'54.04E	Erven
83	GABONEWE ESTATE	112	0	25°22'22.98S	27°4'52.94E	Erven
84	GABONEWE ESTATE	118	0	25°22'17.43S	27°4'55.67E	Erven
85	GABONEWE ESTATE	119	0	25°22'18.02S	27°4'55.65E	Erven
86	GABONEWE ESTATE	128	0	25°22'22.2S	27°4'56.51E	Erven
87	GABONEWE ESTATE	133	0	25°22'19.26S	27°4'56.36E	Erven
88	GABONEWE ESTATE	140	0	25°22'16.95S	27°4'57.64E	Erven
89	GABONEWE ESTATE	146	0	25°22'18.68S	27°4'58.48E	Erven
90	GABONEWE ESTATE	150	0	25°22'16.35S	27°4'58.4E	Erven
91	GABONEWE ESTATE	157	0	25°22'18.24S	27°4'59.57E	Erven
92	GABONEWE ESTATE	161	0	25°22'18.37S	27°5'1.75E	Erven
93	GABONEWE ESTATE	164	0	25°22'19.24S	27°5'0.74E	Erven
94	GABONEWE ESTATE	167	0	25°22'21.42S	27°5'0.26E	Erven
95	GABONEWE ESTATE	1	0	25°22'13.84S	27°4'56.64E	Erven
96	GABONEWE ESTATE	20	0	25°22'18.85S	27°4'49.49E	Erven
97	GABONEWE ESTATE	26	0	25°22'16.51S	27°4'50.25E	Erven
98	GABONEWE ESTATE	28	0	25°22'16.26S	27°4'51.36E	Erven
99	GABONEWE ESTATE	42	0	25°22'16.77S	27°4'53.08E	Erven
100	GABONEWE ESTATE	44	0	25°22'16.77S	27°4'52.39E	Erven
101	GABONEWE ESTATE	50	0	25°22'17.78S	27°4'52.03E	Erven
102	GABONEWE ESTATE	51	0	25°22'17.75S	27°4'52.42E	Erven
103	GABONEWE ESTATE	59	0	25°22'18.27S	27°4'54.21E	Erven
104	GABONEWE ESTATE	62	0	25°22'18.28S	27°4'53.16E	Erven
105	GABONEWE ESTATE	68	0	25°22'19.34S	27°4'51.33E	Erven
106	GABONEWE ESTATE	73	0	25°22'19.31S	27°4'53.11E	Erven
107	GABONEWE	77	0	25°22'19.32S	27°4'54.58E	Erven

	ESTATE					
108	GABONEWE ESTATE	88	0	25°22'20.83S	27°4'51.32E	Erven
109	GABONEWE ESTATE	95	0	25°22'21.41S	27°4'54.56E	Erven
110	GABONEWE ESTATE	103	0	25°22'22.47S	27°4'51.87E	Erven
111	GABONEWE ESTATE	105	0	25°22'22.46S	27°4'52.87E	Erven
112	GABONEWE ESTATE	120	0	25°22'18.67S	27°4'55.66E	Erven
113	GABONEWE ESTATE	121	0	25°22'19.25S	27°4'55.66E	Erven
114	GABONEWE ESTATE	124	0	25°22'20.94S	27°4'55.66E	Erven
115	GABONEWE ESTATE	144	0	25°22'19.23S	27°4'57.63E	Erven
116	GABONEWE ESTATE	152	0	25°22'16.53S	27°5'0.87E	Erven
117	GABONEWE ESTATE	153	0	25°22'17.59S	27°5'1.38E	Erven
118	GABONEWE ESTATE	171	0	25°22'25.43S	27°4'59.19E	Erven
119	GABONEWE ESTATE	193	0	25°22'24.3S	27°5'1.2E	Erven
120	GABONEWE ESTATE	194	0	25°22'24.44S	27°5'2.52E	Erven
121	GABONEWE ESTATE	2	0	25°22'15.29S	27°4'51.52E	Erven
122	GABONEWE ESTATE	12	0	25°22'16.99S	27°4'48.23E	Erven
123	GABONEWE ESTATE	29	0	25°22'16.25S	27°4'51.74E	Erven
124	GABONEWE ESTATE	35	0	25°22'16.26S	27°4'53.82E	Erven
125	GABONEWE ESTATE	53	0	25°22'17.8S	27°4'53.08E	Erven
126	GABONEWE ESTATE	57	0	25°22'17.76S	27°4'54.61E	Erven
127	GABONEWE ESTATE	61	0	25°22'18.28S	27°4'53.49E	Erven
128	GABONEWE ESTATE	64	0	25°22'18.27S	27°4'52.41E	Erven
129	GABONEWE ESTATE	91	0	25°22'20.84S	27°4'52.93E	Erven
130	GABONEWE ESTATE	108	0	25°22'22.47S	27°4'54.55E	Erven
131	GABONEWE ESTATE	136	0	25°22'17.5S	27°4'56.42E	Erven
132	GABONEWE ESTATE	137	0	25°22'16.94S	27°4'56.42E	Erven
133	GABONEWE ESTATE	147	0	25°22'18.09S	27°4'58.44E	Erven
134	GABONEWE ESTATE	148	0	25°22'17.53S	27°4'58.4E	Erven
135	GABONEWE ESTATE	149	0	25°22'16.93S	27°4'58.5E	Erven
136	GABONEWE ESTATE	158	0	25°22'18.23S	27°5'0.14E	Erven
137	GABONEWE ESTATE	162	0	25°22'19.11S	27°5'1.99E	Erven



138	GABONEWE ESTATE	163	0	25°22'19.24S	27°5'1.27E	Erven
139	GABONEWE ESTATE	166	0	25°22'19.26S	27°4'59.62E	Erven
140	GABONEWE ESTATE	169	0	25°22'24.27S	27°4'59.2E	Erven
141	GABONEWE ESTATE	174	0	25°22'27.18S	27°4'59.12E	Erven
142	GABONEWE ESTATE	185	0	25°22'28.27S	27°5'0.46E	Erven
143	GABONEWE ESTATE	189	0	25°22'26.52S	27°5'1.2E	Erven
144	GABONEWE ESTATE	198	0	25°22'26.82S	27°5'2.43E	Erven
145	GABONEWE ESTATE	179	0	25°22'24.86S	27°5'0.54E	Erven
146	GABONEWE ESTATE	187	0	25°22'27.69S	27°5'1.25E	Erven
147	GABONEWE ESTATE	16	0	25°22'16.53S	27°4'49.46E	Erven
148	GABONEWE ESTATE	18	0	25°22'17.71S	27°4'49.49E	Erven
149	GABONEWE ESTATE	38	0	25°22'16.75S	27°4'54.54E	Erven
150	GABONEWE ESTATE	46	0	25°22'16.78S	27°4'51.65E	Erven
151	GABONEWE ESTATE	56	0	25°22'17.76S	27°4'54.21E	Erven
152	GABONEWE ESTATE	79	0	25°22'19.83S	27°4'54.21E	Erven
153	GABONEWE ESTATE	86	0	25°22'19.81S	27°4'51.68E	Erven
154	GABONEWE ESTATE	89	0	25°22'20.86S	27°4'51.88E	Erven
155	GABONEWE ESTATE	93	0	25°22'20.85S	27°4'53.99E	Erven
156	GABONEWE ESTATE	100	0	25°22'21.41S	27°4'51.91E	Erven
157	GABONEWE ESTATE	104	0	25°22'22.47S	27°4'52.41E	Erven
158	GABONEWE ESTATE	114	0	25°22'22.98S	27°4'51.83E	Erven
159	GABONEWE ESTATE	125	0	25°22'21.53S	27°4'55.65E	Erven
160	GABONEWE ESTATE	127	0	25°22'22.9S	27°4'56.16E	Erven
161	GABONEWE ESTATE	134	0	25°22'18.7S	27°4'56.31E	Erven
162	GABONEWE ESTATE	139	0	25°22'16.33S	27°4'57.62E	Erven
163	GABONEWE ESTATE	143	0	25°22'18.66S	27°4'57.68E	Erven
164	GABONEWE ESTATE	145	0	25°22'19.25S	27°4'58.45E	Erven
165	GABONEWE ESTATE	159	0	25°22'18.2S	27°5'0.65E	Erven
166	GABONEWE ESTATE	172	0	25°22'26.02S	27°4'59.24E	Erven
167	GABONEWE ESTATE	182	0	25°22'26.51S	27°5'0.42E	Erven
168	GABONEWE	183	0	25°22'27.17S	27°5'0.46E	Erven

	ESTATE					
169	GABONEWE ESTATE	184	0	25°22'27.68S	27°5'0.37E	Erven
170	GABONEWE ESTATE	195	0	25°22'25.12S	27°5'2.49E	Erven
171	GABONEWE ESTATE	197	0	25°22'26.26S	27°5'2.46E	Erven
172	GABONEWE ESTATE	200	0	25°22'28.03S	27°5'2.44E	Erven
173	GABONEWE ESTATE	201	0	25°22'28.68S	27°5'2.49E	Erven
174	GABONEWE ESTATE	5	0	25°22'14.31S	27°4'50.71E	Erven
175	GABONEWE ESTATE	13	0	25°22'17.55S	27°4'48.2E	Erven
176	GABONEWE ESTATE	32	0	25°22'16.27S	27°4'52.79E	Erven
177	GABONEWE ESTATE	34	0	25°22'16.27S	27°4'53.49E	Erven
178	GABONEWE ESTATE	47	0	25°22'16.78S	27°4'51.32E	Erven
179	GABONEWE ESTATE	49	0	25°22'17.78S	27°4'51.67E	Erven
180	GABONEWE ESTATE	54	0	25°22'17.78S	27°4'53.51E	Erven
181	GABONEWE ESTATE	70	0	25°22'19.31S	27°4'52.04E	Erven
182	GABONEWE ESTATE	74	0	25°22'19.28S	27°4'53.48E	Erven
183	GABONEWE ESTATE	75	0	25°22'19.32S	27°4'53.84E	Erven
184	GABONEWE ESTATE	76	0	25°22'19.28S	27°4'54.19E	Erven
185	GABONEWE ESTATE	80	0	25°22'19.83S	27°4'53.84E	Erven
186	GABONEWE ESTATE	85	0	25°22'19.81S	27°4'52.04E	Erven
187	GABONEWE ESTATE	107	0	25°22'22.45S	27°4'53.99E	Erven
188	GABONEWE ESTATE	111	0	25°22'22.98S	27°4'53.48E	Erven
189	GABONEWE ESTATE	113	0	25°22'22.99S	27°4'52.39E	Erven
190	GABONEWE ESTATE	135	0	25°22'18.13S	27°4'56.49E	Erven
191	GABONEWE ESTATE	141	0	25°22'17.53S	27°4'57.72E	Erven
192	GABONEWE ESTATE	142	0	25°22'18.07S	27°4'57.7E	Erven
193	GABONEWE ESTATE	155	0	25°22'17.67S	27°5'0.13E	Erven
194	GABONEWE ESTATE	160	0	25°22'18.26S	27°5'1.19E	Erven
195	GABONEWE ESTATE	165	0	25°22'19.23S	27°5'0.17E	Erven
196	GABONEWE ESTATE	168	0	25°22'25.87S	27°4'55.94E	Erven
197	GABONEWE ESTATE	175	0	25°22'27.75S	27°4'59.21E	Erven
198	GABONEWE ESTATE	176	0	25°22'28.35S	27°4'59.16E	Erven

199	GABONEWE ESTATE	181	0	25°22'25.97S	27°5'0.49E	Erven
200	GABONEWE ESTATE	196	0	25°22'25.74S	27°5'2.44E	Erven
201	GABONEWE ESTATE	199	0	25°22'27.43S	27°5'2.49E	Erven
202	GABONEWE ESTATE	202	0	25°22'31.14S	27°5'1.51E	Erven
203	FRISCHGEWAAGD	96	0	25°24'12.06S	27°4'36.11E	Farm
204	FRISCHGEWAAGD	96	11	25°22'58.35S	27°4'57.83E	Farm Portion
205	FRISCHGEWAAGD	96	21	25°22'19.5S	27°4'52.52E	Farm Portion

Development footprint<sup>1</sup> vertices:

Footprint	Latitude	Longitude
1	25°22'3.3S	27°5'18.34E
1	25°23'30S	27°5'42.56E
1	25°23'32.63S	27°5'20.76E
1	25°23'33.59S	27°5'12.76E
1	25°23'36.3S	27°4'58.22E
1	25°23'39S	27°4'59.54E
1	25°23'37.05S	27°4'48.02E
1	25°23'32.76S	27°4'45.97E
1	25°23'39.9S	27°4'17.57E
1	25°23'20.35S	27°4'19.74E
1	25°23'19.38S	27°4'19.85E
1	25°22'29.88S	27°4'25.35E
1	25°22'22.78S	27°4'23.64E
1	25°22'20.3S	27°4'30.6E
1	25°22'16.86S	27°4'40.27E
1	25°22'3.3S	27°5'18.34E

## Wind and Solar developments with an approved Environmental Authorisation or applications under consideration within 30 km of the proposed area

No nearby wind or solar developments found.

## Environmental Management Frameworks relevant to the application

No intersections with EMF areas found.

## Environmental screening results and assessment outcomes

The following sections contain a summary of any development incentives, restrictions, exclusions or prohibitions that apply to the proposed development footprint as well as the most

<sup>1</sup> “development footprint”, means the area within the site on which the development will take place and includes all ancillary developments for example roads, power lines, boundary walls, paving etc. which require vegetation clearance or which will be disturbed and for which the application has been submitted.

environmental sensitive features on the footprint based on the footprint sensitivity screening results for the application classification that was selected. The application classification selected for this report is:

**Mining | Mining Right.**

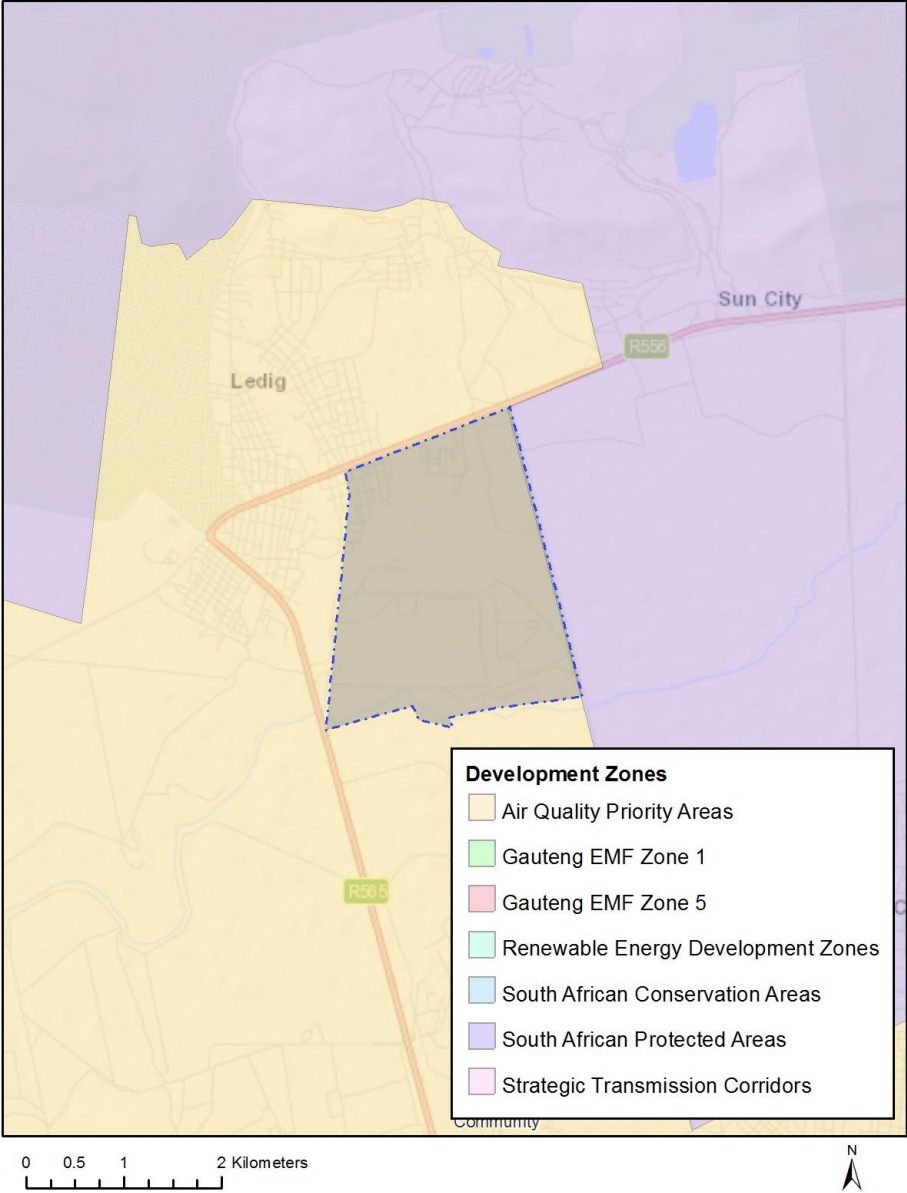
### Relevant development incentives, restrictions, exclusions or prohibitions

The following development incentives, restrictions, exclusions or prohibitions and their implications that apply to this footprint are indicated below.

Incentive, restriction or prohibition	Implication
Air Quality-Waterberg-Bojanala Priority Area	<a href="https://screening.environment.gov.za/ScreeningDownloads/DevelopmentZones/gg39489_nn1207a.pdf">https://screening.environment.gov.za/ScreeningDownloads/DevelopmentZones/gg39489_nn1207a.pdf</a>
South African Protected Areas	<a href="https://screening.environment.gov.za/ScreeningDownloads/DevelopmentZones/SAPAD_OR_2020_Q3_Metadata.pdf">https://screening.environment.gov.za/ScreeningDownloads/DevelopmentZones/SAPAD_OR_2020_Q3_Metadata.pdf</a>

Map indicating proposed development footprint within applicable development incentive, restriction, exclusion or prohibition zones

**Project Location: Bakubung Platinum Mine**



**Proposed Development Area Environmental Sensitivity**

The following summary of the development footprint environmental sensitivities is identified. Only the highest environmental sensitivity is indicated. The footprint environmental sensitivities for the proposed development footprint as identified, are indicative only and must be verified on site by a suitably qualified person before the specialist assessments identified below can be confirmed.

Theme	Very High sensitivity	High sensitivity	Medium sensitivity	Low sensitivity
Agriculture Theme	X			
Animal Species Theme			X	

Aquatic Biodiversity Theme	X			
Archaeological and Cultural Heritage Theme		X		
Civil Aviation Theme			X	
Defence Theme				X
Paleontology Theme			X	
Plant Species Theme			X	
Terrestrial Biodiversity Theme	X			

### Specialist assessments identified

Based on the selected classification, and the environmental sensitivities of the proposed development footprint, the following list of specialist assessments have been identified for inclusion in the assessment report. It is the responsibility of the EAP to confirm this list and to motivate in the assessment report, the reason for not including any of the identified specialist study including the provision of photographic evidence of the footprint situation.

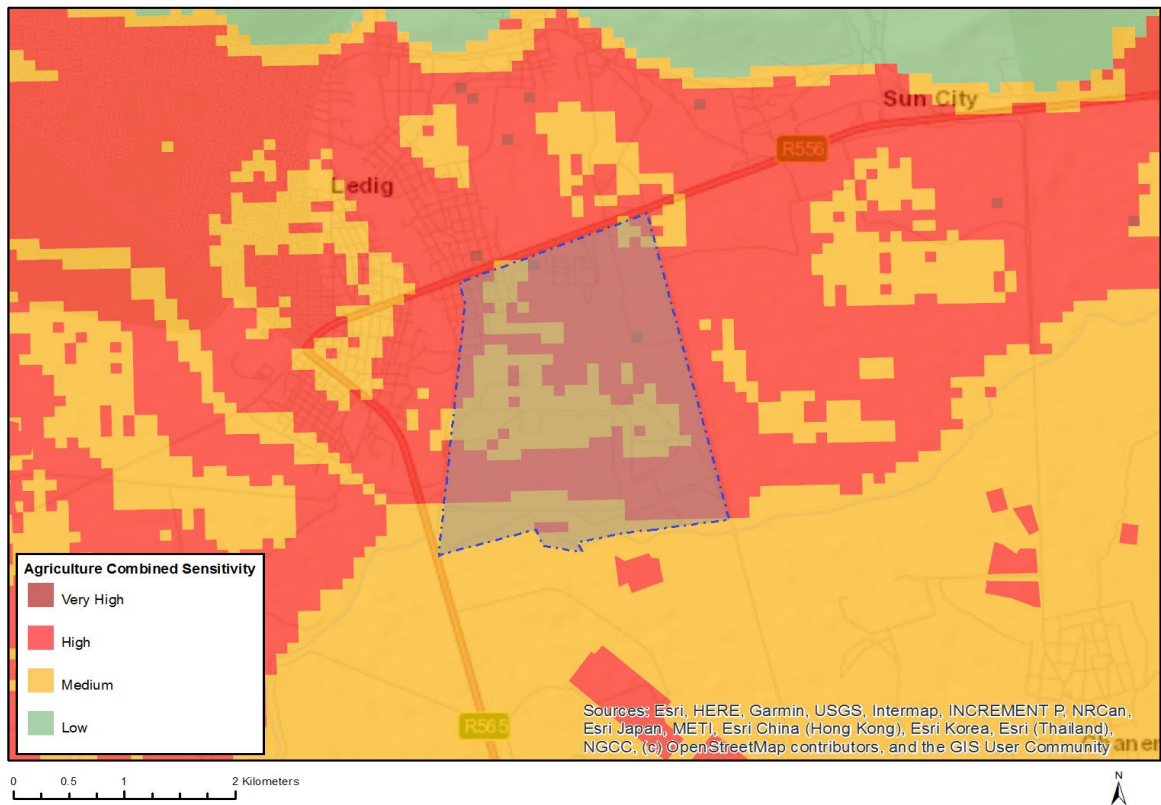
<b>N o</b>	<b>Special ist assessm ent</b>	<b>Assessment Protocol</b>
1	Agricultural Impact Assessment	<a href="https://screening.environment.gov.za/ScreeningDownloads/AssessmentProtocols/Gazetted_General_Agriculture_Assessment_Protocols.pdf">https://screening.environment.gov.za/ScreeningDownloads/AssessmentProtocols/Gazetted_General_Agriculture_Assessment_Protocols.pdf</a>
2	Landscape/Visual Impact Assessment	<a href="https://screening.environment.gov.za/ScreeningDownloads/AssessmentProtocols/Gazetted_General_Requirement_Assessment_Protocols.pdf">https://screening.environment.gov.za/ScreeningDownloads/AssessmentProtocols/Gazetted_General_Requirement_Assessment_Protocols.pdf</a>
3	Archaeological and Cultural Heritage Impact Assessment	<a href="https://screening.environment.gov.za/ScreeningDownloads/AssessmentProtocols/Gazetted_General_Requirement_Assessment_Protocols.pdf">https://screening.environment.gov.za/ScreeningDownloads/AssessmentProtocols/Gazetted_General_Requirement_Assessment_Protocols.pdf</a>
4	Palaeontology Impact Assessment	<a href="https://screening.environment.gov.za/ScreeningDownloads/AssessmentProtocols/Gazetted_General_Requirement_Assessment_Protocols.pdf">https://screening.environment.gov.za/ScreeningDownloads/AssessmentProtocols/Gazetted_General_Requirement_Assessment_Protocols.pdf</a>
5	Terrestrial Biodiversity Impact Assessment	<a href="https://screening.environment.gov.za/ScreeningDownloads/AssessmentProtocols/Gazetted_Terrestrial_Biodiversity_Assessment_Protocols.pdf">https://screening.environment.gov.za/ScreeningDownloads/AssessmentProtocols/Gazetted_Terrestrial_Biodiversity_Assessment_Protocols.pdf</a>
6	Aquatic Biodiversity Impact Assessment	<a href="https://screening.environment.gov.za/ScreeningDownloads/AssessmentProtocols/Gazetted_Aquatic_Biodiversity_Assessment_Protocols.pdf">https://screening.environment.gov.za/ScreeningDownloads/AssessmentProtocols/Gazetted_Aquatic_Biodiversity_Assessment_Protocols.pdf</a>
7	Hydrology	<a href="https://screening.environment.gov.za/ScreeningDownloads/AssessmentProtocols">https://screening.environment.gov.za/ScreeningDownloads/AssessmentProtocols</a>

	Assessment	<a href="#">/Gazetted General Requirement Assessment Protocols.pdf</a>
8	Noise Impact Assessment	<a href="https://screening.environment.gov.za/ScreeningDownloads/AssessmentProtocols/Gazetted_Noise_Impacts_Assessment_Protocol.pdf">https://screening.environment.gov.za/ScreeningDownloads/AssessmentProtocols/Gazetted Noise Impacts Assessment Protocol.pdf</a>
9	Radioactivity Impact Assessment	<a href="https://screening.environment.gov.za/ScreeningDownloads/AssessmentProtocols/Gazetted_General_Requirement_Assessment_Protocols.pdf">https://screening.environment.gov.za/ScreeningDownloads/AssessmentProtocols/Gazetted General Requirement Assessment Protocols.pdf</a>
10	Traffic Impact Assessment	<a href="https://screening.environment.gov.za/ScreeningDownloads/AssessmentProtocols/Gazetted_General_Requirement_Assessment_Protocols.pdf">https://screening.environment.gov.za/ScreeningDownloads/AssessmentProtocols/Gazetted General Requirement Assessment Protocols.pdf</a>
11	Geotechnical Assessment	<a href="https://screening.environment.gov.za/ScreeningDownloads/AssessmentProtocols/Gazetted_General_Requirement_Assessment_Protocols.pdf">https://screening.environment.gov.za/ScreeningDownloads/AssessmentProtocols/Gazetted General Requirement Assessment Protocols.pdf</a>
12	Climate Impact Assessment	<a href="https://screening.environment.gov.za/ScreeningDownloads/AssessmentProtocols/Gazetted_General_Requirement_Assessment_Protocols.pdf">https://screening.environment.gov.za/ScreeningDownloads/AssessmentProtocols/Gazetted General Requirement Assessment Protocols.pdf</a>
13	Health Impact Assessment	<a href="https://screening.environment.gov.za/ScreeningDownloads/AssessmentProtocols/Gazetted_General_Requirement_Assessment_Protocols.pdf">https://screening.environment.gov.za/ScreeningDownloads/AssessmentProtocols/Gazetted General Requirement Assessment Protocols.pdf</a>
14	Socio-Economic Assessment	<a href="https://screening.environment.gov.za/ScreeningDownloads/AssessmentProtocols/Gazetted_General_Requirement_Assessment_Protocols.pdf">https://screening.environment.gov.za/ScreeningDownloads/AssessmentProtocols/Gazetted General Requirement Assessment Protocols.pdf</a>
15	Ambient Air Quality Impact Assessment	<a href="https://screening.environment.gov.za/ScreeningDownloads/AssessmentProtocols/Gazetted_General_Requirement_Assessment_Protocols.pdf">https://screening.environment.gov.za/ScreeningDownloads/AssessmentProtocols/Gazetted General Requirement Assessment Protocols.pdf</a>
16	Seismicity Assessment	<a href="https://screening.environment.gov.za/ScreeningDownloads/AssessmentProtocols/Gazetted_General_Requirement_Assessment_Protocols.pdf">https://screening.environment.gov.za/ScreeningDownloads/AssessmentProtocols/Gazetted General Requirement Assessment Protocols.pdf</a>
17	Plant Species Assessment	<a href="https://screening.environment.gov.za/ScreeningDownloads/AssessmentProtocols/Gazetted_Plant_Species_Assessment_Protocols.pdf">https://screening.environment.gov.za/ScreeningDownloads/AssessmentProtocols/Gazetted Plant Species Assessment Protocols.pdf</a>
18	Animal Species Assessment	<a href="https://screening.environment.gov.za/ScreeningDownloads/AssessmentProtocols/Gazetted_Animal_Species_Assessment_Protocols.pdf">https://screening.environment.gov.za/ScreeningDownloads/AssessmentProtocols/Gazetted Animal Species Assessment Protocols.pdf</a>

## Results of the environmental sensitivity of the proposed area.

The following section represents the results of the screening for environmental sensitivity of the proposed footprint for relevant environmental themes associated with the project classification. It is the duty of the EAP to ensure that the environmental themes provided by the screening tool are comprehensive and complete for the project. Refer to the disclaimer.

### MAP OF RELATIVE AGRICULTURE THEME SENSITIVITY



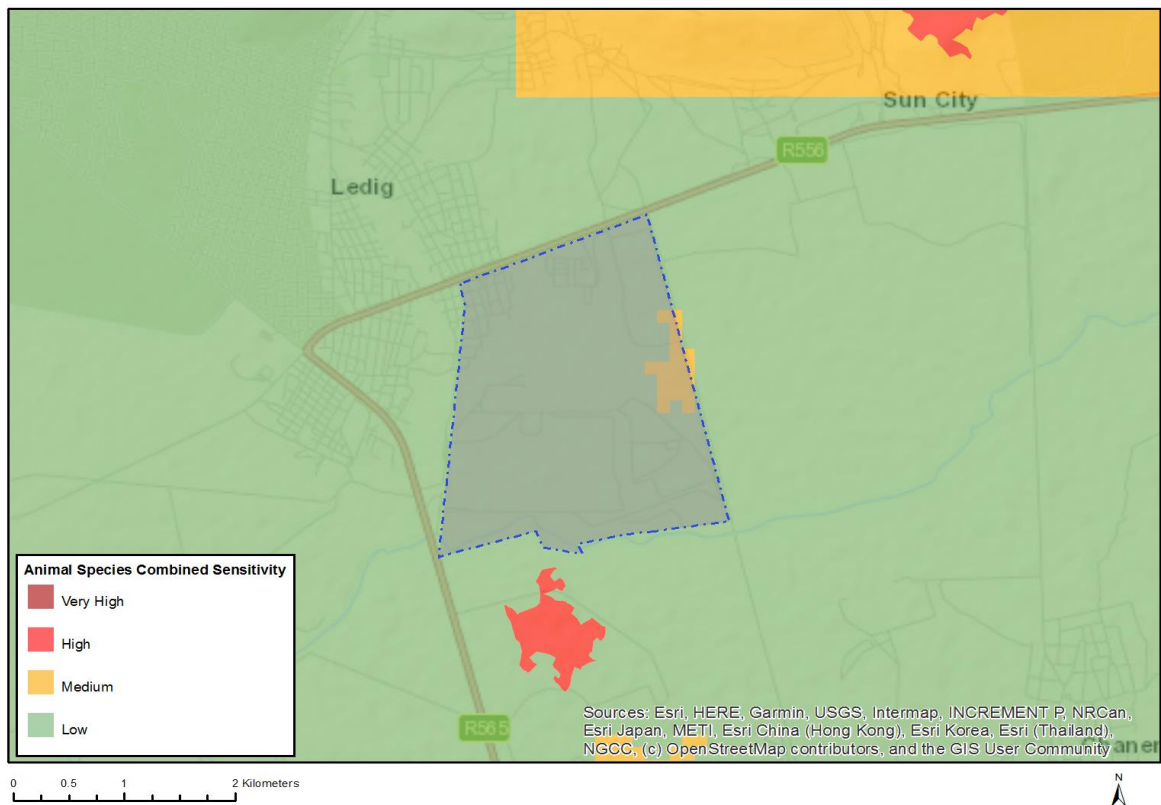
Very High sensitivity	High sensitivity	Medium sensitivity	Low sensitivity
X			

#### Sensitivity Features:

Sensitivity	Feature(s)
High	Land capability;09. Moderate-High/10. Moderate-High
Medium	Land capability;06. Low-Moderate/07. Low-Moderate/08. Moderate
Very High	Land capability;11. High/12. High-Very high/13. High-Very high/14. Very high/15. Very high



## MAP OF RELATIVE ANIMAL SPECIES THEME SENSITIVITY



Where only a sensitive plant unique number or sensitive animal unique number is provided in the screening report and an assessment is required, the environmental assessment practitioner (EAP) or specialist is required to email SANBI at [eiadatarequests@sanbi.org.za](mailto:eiadatarequests@sanbi.org.za) listing all sensitive species with their unique identifiers for which information is required. The name has been withheld as the species may be prone to illegal harvesting and must be protected. SANBI will release the actual species name after the details of the EAP or specialist have been documented.

Very High sensitivity	High sensitivity	Medium sensitivity	Low sensitivity
		X	

### Sensitivity Features:

Sensitivity	Feature(s)
Low	Low sensitivity
Medium	Aves-Sagittarius serpentarius

## MAP OF RELATIVE AQUATIC BIODIVERSITY THEME SENSITIVITY

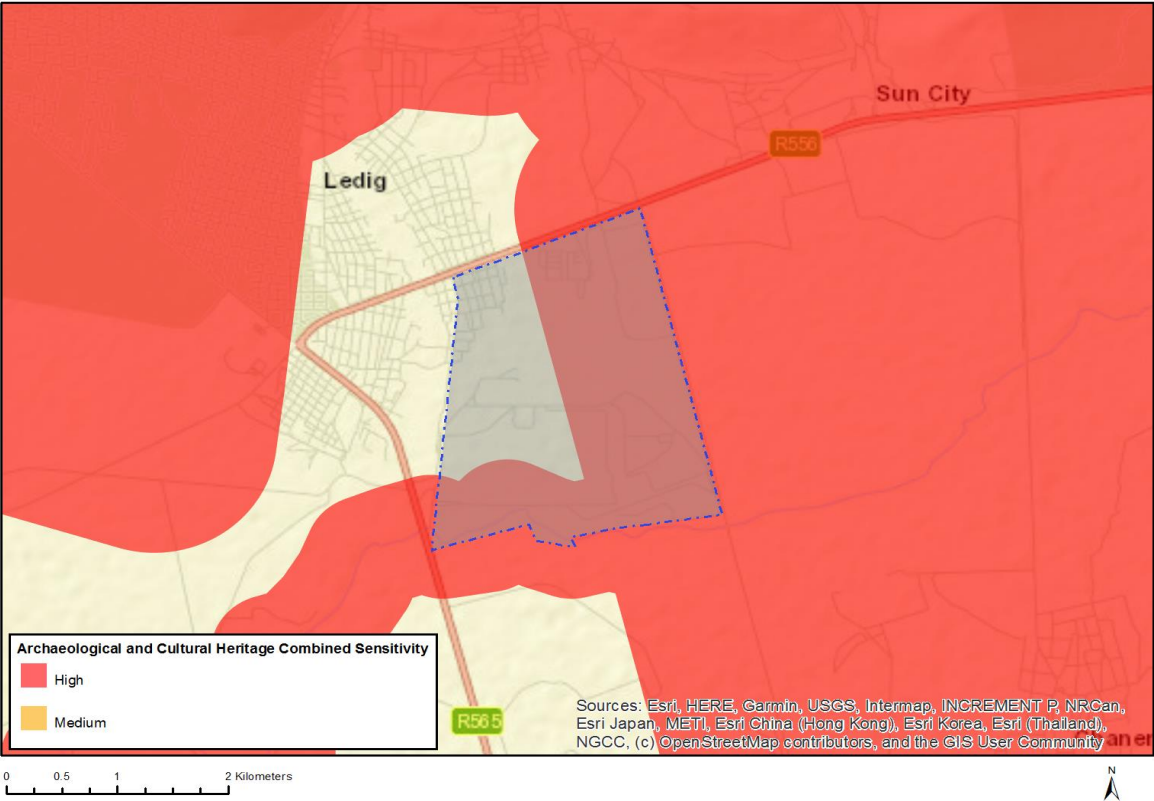


Very High sensitivity	High sensitivity	Medium sensitivity	Low sensitivity
X			

### Sensitivity Features:

Sensitivity	Feature(s)
Low	Low sensitivity
Very High	Aquatic CBAs
Very High	Wetlands and Estuaries

# MAP OF RELATIVE ARCHAEOLOGICAL AND CULTURAL HERITAGE THEME SENSITIVITY

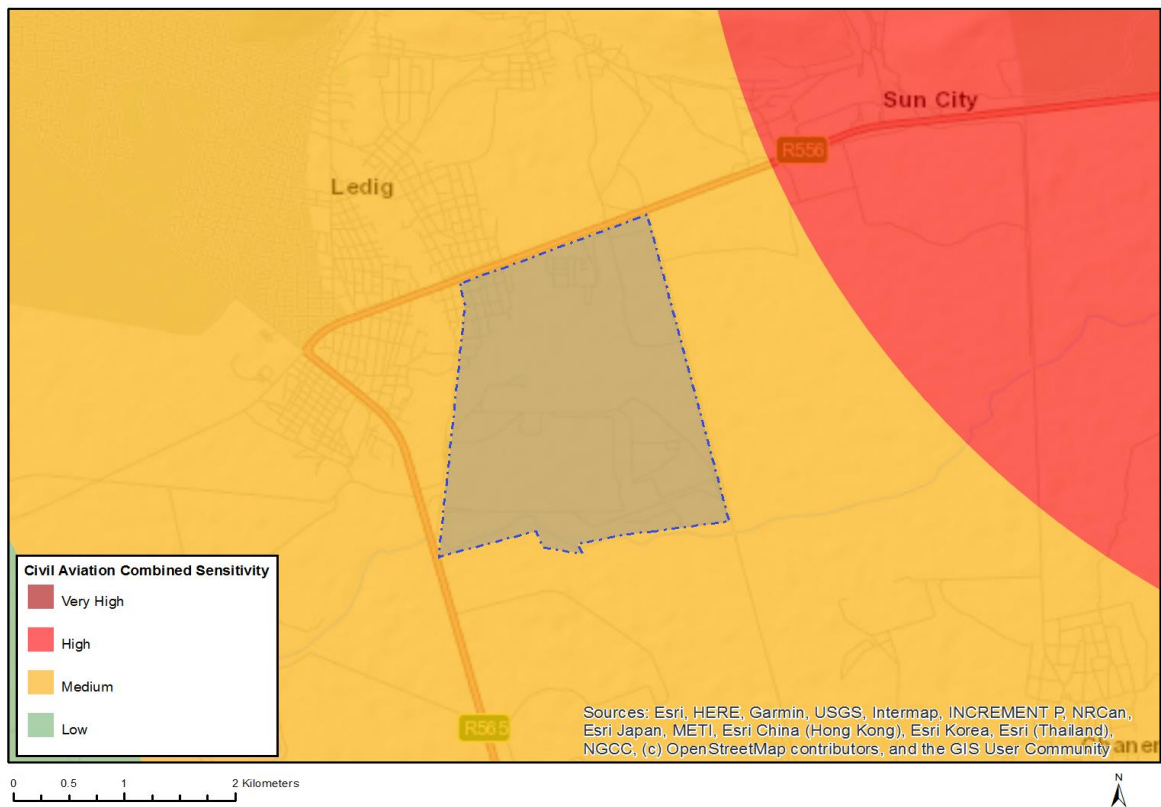


Very High sensitivity	High sensitivity	Medium sensitivity	Low sensitivity
	X		

### Sensitivity Features:

Sensitivity	Feature(s)
High	Within 500 m of an important river
High	Within protected area
High	Within 1 km of a protected area

## MAP OF RELATIVE CIVIL AVIATION THEME SENSITIVITY

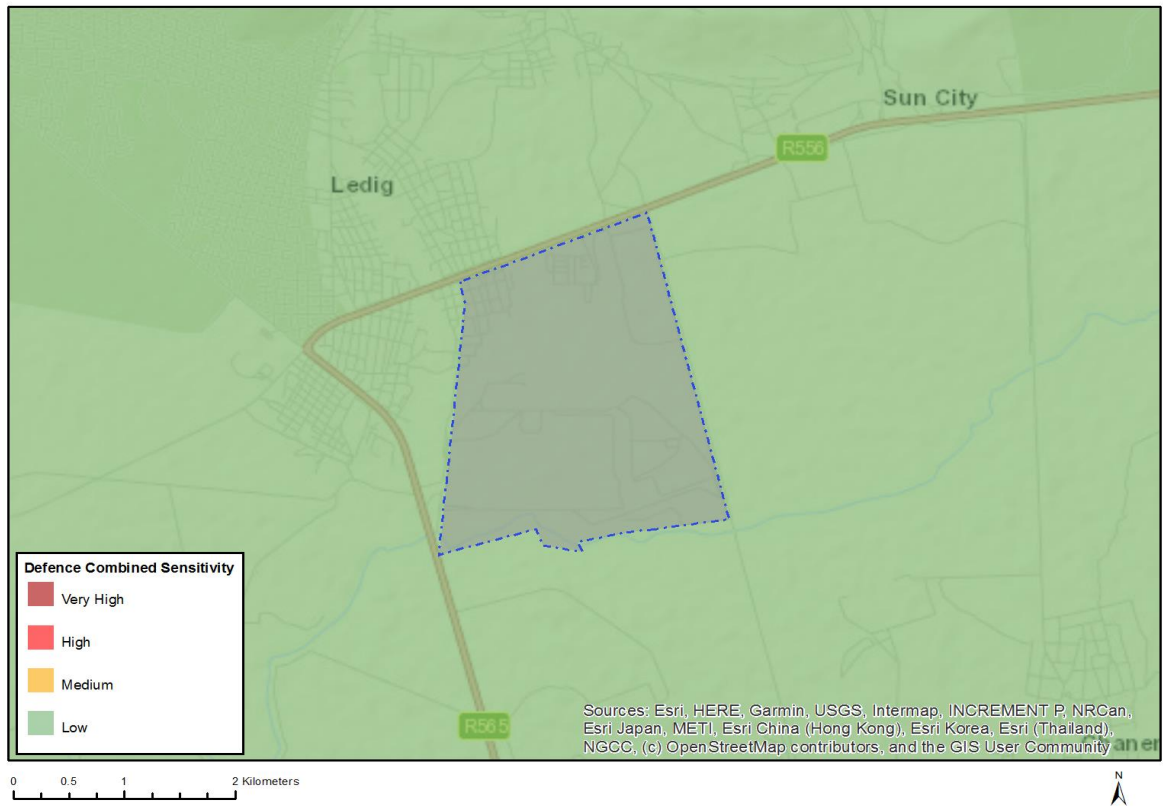


Very High sensitivity	High sensitivity	Medium sensitivity	Low sensitivity
		X	

### Sensitivity Features:

Sensitivity	Feature(s)
Medium	Within 5 km of an air traffic control or navigation site
Medium	Between 8 and 15 km of other civil aviation aerodrome

## MAP OF RELATIVE DEFENCE THEME SENSITIVITY

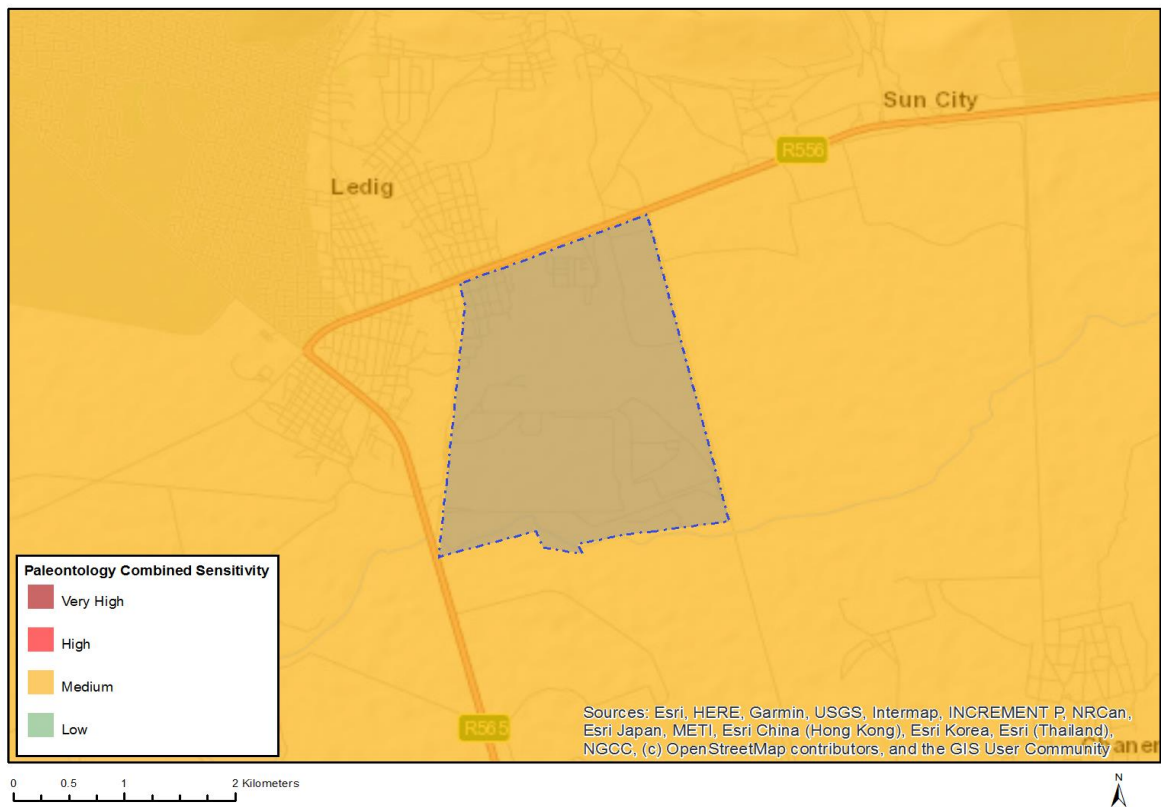


Very High sensitivity	High sensitivity	Medium sensitivity	Low sensitivity
			X

### Sensitivity Features:

Sensitivity	Feature(s)
Low	Low Sensitivity

## MAP OF RELATIVE PALEONTOLOGY THEME SENSITIVITY



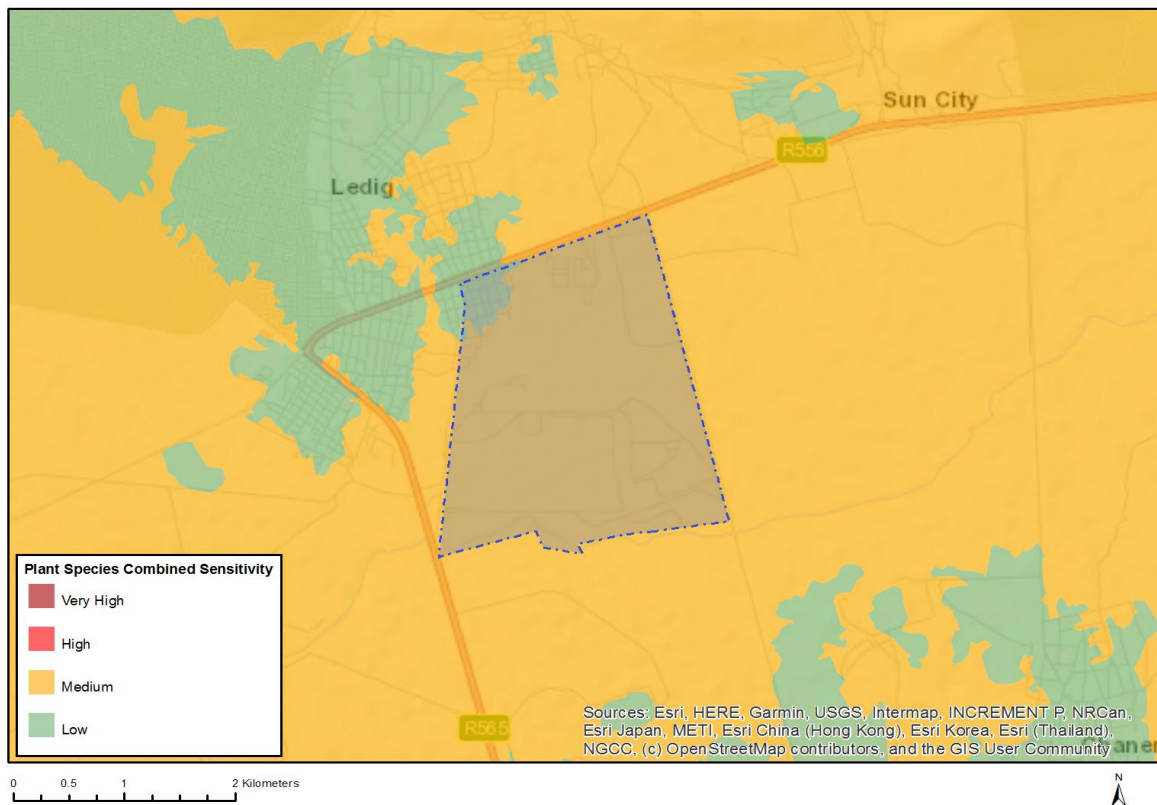
Very High sensitivity	High sensitivity	Medium sensitivity	Low sensitivity
		X	

### Sensitivity Features:

Sensitivity	Feature(s)
Medium	Features with a Medium paleontological sensitivity



## MAP OF RELATIVE PLANT SPECIES THEME SENSITIVITY



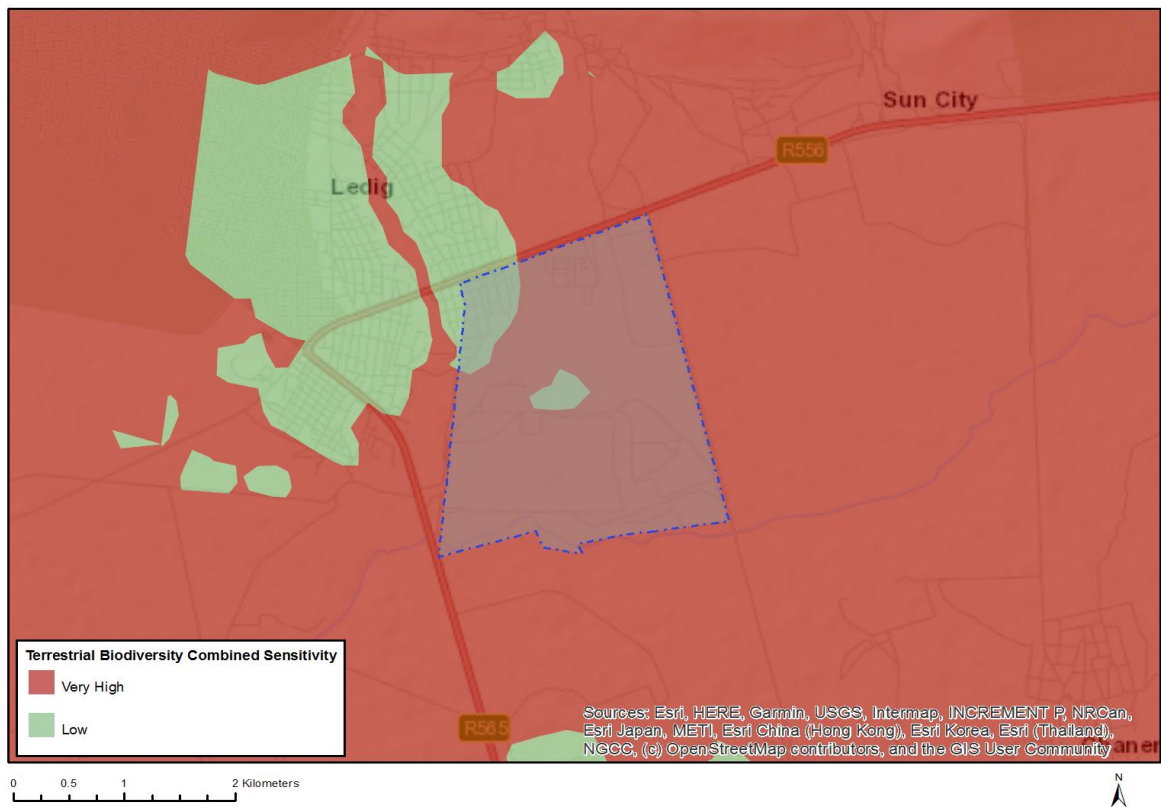
Where only a sensitive plant unique number or sensitive animal unique number is provided in the screening report and an assessment is required, the environmental assessment practitioner (EAP) or specialist is required to email SANBI at [eiadatarequests@sanbi.org.za](mailto:eiadatarequests@sanbi.org.za) listing all sensitive species with their unique identifiers for which information is required. The name has been withheld as the species may be prone to illegal harvesting and must be protected. SANBI will release the actual species name after the details of the EAP or specialist have been documented.

Very High sensitivity	High sensitivity	Medium sensitivity	Low sensitivity
		X	

### Sensitivity Features:

Sensitivity	Feature(s)
Low	Low Sensitivity
Medium	Cullen holubii

## MAP OF RELATIVE TERRESTRIAL BIODIVERSITY THEME SENSITIVITY



Very High sensitivity	High sensitivity	Medium sensitivity	Low sensitivity
X			

### Sensitivity Features:

Sensitivity	Feature(s)
Low	Low Sensitivity
Very High	Critical Biodiversity Area 2
Very High	Focus Areas for land-based protected areas expansion
Very High	South African Protected Areas