

APPENDIX A: INFORMATION SHARING WITH AUTHORITIES AND IAPS

- Background information document (BID)
- Advertisements
- Photographs of site notices
- Correspondence with IAPs (including landowners)
- Correspondence with relevant authorities
- Scoping focused meeting attendance registers and minutes
- Scoping public meeting attendance registers and minutes
- Regulatory Authorities scoping meeting attendance register and minutes
- Scoping meeting presentation delivered at focused and public meetings

TRAFFIC TURMOIL!

20 Joburg lights out of order

By JANE MOKGOSI

THE school year has begun and that means very heavy traffic in the morning and afternoons.

Getting through the long traffic queues is tough even at the best of times but things are being made worse in Joburg by the number of traffic lights that are out of order.

More than 20 sets of lights have not been working since the beginning of December.

They are situated at:

■ Joe Slovo and Raleigh Street in Yeoville; City Deep at Heidelberg Road towards Alberton.

■ In Fourways at William Nicol and Leslie, and at William Nicol and White Hills Boulevard. In Blue Hills at Summit and the R55.

■ In Bryanston at William Nicol and Grosvenor.

■ In Ruitershof at Rabie and Malibongwe.

■ In Boksburg at Rietfontein and Rondebult.

■ In Bramley at High and Corlett.

■ In Malanshof at Malibongwe and Hans Schoeman.

■ In Melville at Main and First.

■ In Sandton at Fredman and Fifth.

■ In Midrand at Olifantsfontein and the N1 South.

■ In Morningside at Kelvin and Summit, and Summit and North.

■ In Woodlands at Western Service Road and Woodlands.

■ In Floracliffe at the 14th Avenue exits off the N1.

■ In Martindale at Brown and Main.

■ In Randburg CBD at Pretoria and Harley, as well as Retail and Kent.

■ In Hyde Park at First and Sixth.

■ In Constantia Kloof at Christiaan de Wet and Jim Fouché.

■ In Woodmead at the Woodmead Drive exits off the M1, and Woodmead and Old Pretoria Road.

■ In Dunkeld at Jan Smuts and North.

■ In Industria West at Commando and Maraisburg.

■ In Parktown at Eton and Oxford.

■ In Germiston at Van Riebeeck and Rand Airport.

■ In Randpark Ridge at Dale Lace and Scott, and at Rabie and Catherine.

■ In Witpoortjie at Main Reef and Corlett Avenue.

■ In Olivedale at President Fouché and Jacaranda.

■ In Nootgedacht at the Malibongwe drive exits off the N14.

■ In Florida Park at Christian De Wet and Wattle.

■ In Soweto at New Canada Road and Soweto Highway heading south and Chris Hanu Road next to the University of Joburg, Soweto campus.

Joburg Roads Agency boss Thulane Makhubela is on record as saying that faulty traffic lights would be fixed within 24 hours of being reported.

But he failed to keep his promise to get back to *Daily Sun* with the answers to some questions.

However SunReaders who have a problem with faulty traffic lights can try calling Joburg Connect on 011 375 5555. Some of the traffic lights that are not working on this list were provided by our readers. Others are from 702 Talk Radio.



ALL ASH: Betty Motshwene, her boyfriend Jan Makhathulela and grandchildren Surprise Khoza (2) and Sello Motshwene (10) at the burnt-out shack. Photo by Samson Ratswana

Cruel fire ate gogo's shack sold that night

By TEBOGO THAMANE

GOGO Betty Motshwene (58) sold her stand and shack for R4 000 on Saturday.

Thenshe, her boyfriend and friends partied at the tavern near her home in Kagisanong, near Ga-Rankuwa in Tshwane, Gauteng.

Afterwards she forgot to blow out the candle beside her bed when she went to sleep.

That sparked a blaze that hurt her grandson (2) and ate the R4 000. Her dog that was chained to the six-room shack burned to death. The fire ate everything. And now the shack is a pile of ash.

Betty, her boyfriend Jan

Makhathulela (59) and her 13 grandchildren are homeless.

They must leave the stand by 5 February, as agreed.

The hero was Sello Motshwene (10), the gogo's visiting grandson who saved the family from the fire. "We were sleeping when he shouted there was a fire," said Betty.

"There were flames everywhere."

They got all the grandkids out the shack. Luckily, only six of them were there. "We are staying with my daughter in her RDP house now, but there are too many of us. It's hard with no blankets and clothes," said sad Betty.

Can't get a contract?
Try Bayport Cellular!

2 PHONES FOR ONLY
R389

Nokia C3 plus BayMobile Chat!
24 MONTHS
(2 Phones, 3 SMS)

24 months
(2 Phones, 3 SMS)

INCLUDES:
1 x Vodafone TopUp with 249 Airtime per month
2 x Vodafone TopUp with 249 Airtime per month
SMS 'LIT' to 41777

Bayport Cellular

THE HOLLARD LEGAL PLAN

YOU NEVER KNOW WHEN YOU'LL NEED A LAWYER

• Up to **R200 000** cover per case

• No annual limit

For as little as R120 per month, you're covered for R120,000 per case.

SMS LAW or send a Please Call Me to
076 240 0976

A Hollard Legal Plan consultant will call you back.

We get you

Hollard

www.hollard.co.za

*Terms and conditions apply. Hollard Insurance (Pty) Ltd is an authorised financial services provider.

ENVIRONMENTAL IMPACT ASSESSMENT AND ENVIRONMENTAL MANAGEMENT PROGRAMME (EIA/EMP) AMENDMENT FOR THARISA MINERALS (PTY) LTD

Notice is given in terms of the Mineral and Petroleum Resources Development Act, 28 of 2002 (MPRDA), the National Environmental Management Act, 107 of 1998 (NEMA), the National Environment Management: Air Quality Act, 39 of 2004 (NEM:QA), the National Environment: Waste Act, 59 of 2008 (NEM:WA) and the National Water Act, 36 of 1998 (NWA) of intent by Tharisa Minerals (Pty) Ltd (Tharisa) to carry out the activities described below. In this regard, applications for environmental authorisations have been submitted to the North West Department of Economic Development, Environment, Conservation and Tourism (DEDECT) and the North West Department of Mineral Resources (DMR) and an application for a waste licence to the Department of Environmental Affairs. An atmospheric emissions licence application will be lodged with the DEDECT (Air Quality Management Unit) in due course.

Reference number
DMR Reference Number: NW30/5/1/2/3/2/1/358
DEDECT Reference Number: NWP/EIA/50/2011
DEA Reference Number: 12/9/11/L675/
Please include these reference numbers on all correspondence.

Name of Proponent
Tharisa is an existing mine that produces chrome and platinum group metals (PGM) concentrates near Marikana town.

Description of proposed activities
Tharisa proposes to construct and operate PGM smelter house and associated infrastructure, to construct and operate a chrome sand drying plant, store hazardous substances (e.g. acid), store hazardous waste (e.g. used acid), change the tailings dam design and characteristics and change the general surface infrastructure layout at Tharisa Mine.

The following NEMA-listed activities are potentially triggered by the proposed projects: Regulation (13); Regulation No. 545 (5); and Regulation No. 545 (26).

Location
The proposed activities will be located at Tharisa Mine that is situated on the farms Kafferskraal 342 JQ, Rooikoppies 297 JQ and Elandsdrift 467 JQ within the Rustenburg and Madibeng Local Municipalities and Bojanala Platinum District Municipality in the North West.

Name of consultant to contact
SLR Consulting (Africa) (Pty) Ltd (SLR)
Contact persons: Ms Stella Moeketsé
Postal address: PO Box 1596, Cramerville, 2060
Tel: (011) 467-0945, Fax: (011) 467-0978, E-mail: smoekets@slrconsulting.com

Notice of public scoping meeting
Two public meetings have been arranged for the project as outlined below. Please contact the people listed above for directions to either meeting. These meetings will be used to provide information on the proposed project.

Meeting A: Focused stakeholder meeting.
(This meeting will be arranged by invitation.)

Meeting B: General public meeting
Languages: English and Setswana
Date: Thursday 16 February 2012
Time: 16:30
Venue: Retief Primary School (Hall)

Registration for IAPs
Should you wish to receive further information, please submit your name, contact information, the DEA, DEDECT and DMR reference number/s and interest in the matter in writing to the contact person(s) above within 30 days of publication of this advertisement or at the public scoping meetings.

Additional information
To obtain additional information about the proposed project and/or the environmental assessment process, please contact the abovementioned consultants.

Date of publication of this advert
19 January 2012.

Public Works gets a hot klap

By NGOMOTSO RAMOTSHO

THE Department of Public Works is getting worse at book-keeping, according to the Auditor-General.

This follows the firing in October of the department's minister, Gwen Mahlangu-Nkabinde, amid building lease scandals and claims of "shameful waste of money".

This week Terrence Nombembe, the Auditor-General, issued the latest audit report.

It told a sorry tale of a failure in leadership and financial management. In the latest audit year, the department earned a "financial disclaimer".

A "disclaimer" means an auditor refuses to give an opinion because the books are in such a poor state that an audit can't be completed.

Six other departments got a klap from the Auditor-General. But four improved and 21 were unchanged.

Home Affairs got a pat on the back, with an unqualified financial opinion for the first time in 16 years.



RUSTENBURG - The SPCA is overflowing with very scared animals which lost their way home over the festive season and are waiting to be reunited with their family. If your pet is missing please visit your local SPCA and have a look at the kennels.



ENVIRONMENTAL IMPACT ASSESMENT AND ENVIRONMENTAL MANAGEMENT PROGRAMME (EIA/EMP) AMENDMENT FOR THARISA MINERALS (PTY) LTD

Notice is given in terms of the Mineral and Petroleum Resources Development Act, 28 of 2002 (MPRDA), the National Environmental Management Act, 107 of 1998 (NEMA), the National Environment Management Air Quality Act, 39 of 2004 (NEMAQA), the National Environment Waste Act, 59 of 2009 (NEMWA) and the National Water Act, 36 of 1998 (NWA) of intent by Tharisa Minerals (Pty) Ltd (Thensa) to carry out the activities described below. In this regard applications for environmental authorisations have been submitted to the North-West Department of Economic Development, Environment, Conservation and Tourism (DEDECT) and the North West Department of Mineral Resources (DMR) and an application for a waste license to the Department of Environmental Affairs. Atmospheric emissions license application will be lodged with the DEDECT (Air Quality Management Unit) in due course.

Reference number

DMR Reference Number: NW30/5/1/2/3/2/1/358
 DEDECT Reference Number: NWP/EIA/50/2011
 DEA Reference Number: 12/9/11/L675/

Please include these reference numbers on all correspondence

Name of Proponent

Thansa is an existing mine which produces chrome and platinum group metals (PGM) concentrates near Marikana town.

Description of proposed activities

Thansa proposes to construct and operate PGM smelter house and associated infrastructure, to construct and operate a chrome sand drying plant, store hazardous substances (eg acid), store hazardous waste (eg used acid), change the tailings dam design and characteristics and change the general surface infrastructure layout at Tharisa Mine.

The following NEMA listed activities are potentially triggered by the proposed projects: Regulation No. 544 (13), Regulation No. 545 (5), and Regulation No 545 (26).

Location

The proposed activities will be located at Tharisa Mine that is situated on the farms Kafferskraal 342 JQ, Rooikoppies 297 JQ and Elandsdrif 467 JQ within the Rustenburg and Madiberg Local Municipalities and Bojanala Platinum District Municipality in the North West Province.

Name of consultant to contact

SLR Consulting (Africa) (Pty) Ltd (SLR)
 Contact person: Ms Stella Moeketse
 Postal Address: P.O. Box 1596, Cramerville, 2060
 Tel: (011) 467-0945, Fax: (011) 467-0978, E-mail: smoeketse@slrconsulting.com

Notice of public scoping meeting

Two public meetings have been arranged for the project as outlined below. Please contact the people listed above for directions to either meeting. These meetings will be used to provide information on the proposed project.

Meeting A: Focused stakeholder meeting

This meeting will be arranged by invitation.

Meeting B: General public meeting

Language: English and Setswana
 Date: Thursday 16 February 2012
 Time: 16H30
 Venue: Relief Primary School (Hall)

Registration for IAPs

Should you wish to receive further information please submit your name, contact information, the DEA, DEDECT and DMR reference numbers and interest in the matter in writing to the contact person(s) above within 30 days of publication of this advertisement or at the public scoping meetings.

Additional Information

To obtain additional information about the proposed project and/or the environmental assessment process, please contact the above mentioned consultants.

Date of publication of this advert

19 January 2012.

VALENTINE SPECIALS!!

Show off your romantic, sensational side with special studio and location photo shoots especially for valentine. Do prints, photo books or even do it on Canvas. Couples or singles. Give your loved one a gift they will treasure for ever.

Creative Art Photography
 079 694 2491

www.freemance-professionals.co.za
 eugene@freemance-professionals.co.za

Recording Studio
 49 Rosh Building
 New Street
 Rustenburg
 Entrance Next to Beadlows
 Upstairs Office 23 and 25
 Contact US at 083 637 9427

SERVICES

1. MUSIC RECORDING
 GENRES: CULTURAL

COSPEL HIP HOP

DISCO JAZZ POP

BEGGAY AFRO POP

KWATSO HOUSE & More

2. NARRATION

3. VOICE OVER

4. STORY TELLING

5. MUSIC VIDEO

6. JINGLES

7. AUDIO CONVERSION & More

STUDIO

Womens Clinic and Family Planning Services

K.C. WOMENS CLINIC

Pain Free Abortion
 Surgical Abortion
 Pregnancy Test
 Family Planning (Pills & Injections)
 Morning After Pill
 Ante Natal Care
 Pap-Smear
 Female Sterilization
 Well Baby Clinic
 STI Treatment
 Male Circumcision
 STI Screening

1174 KENNEDY STR - 074 614 8111
 ALL WITVOEDERSCHIEDERWEGE 1011

Department of Public Works, Roads and Transport

Invitation to Bid

Bids are hereby invited for:

Bid number	Bid description	CITMP grading	Pre-qualification deadline	Submission criteria	Contact person
PWRT 105/11 A	Bulk construction for the construction of change rooms at Letimela Sub-aquatic Office	R21 or higher	11 January 2012 at 12:00 on site	A preference point system of 40/10 will be used to evaluate the bid as follows: Price = 30 points, BBBEE status level of construction = 10 points	Ms. V. Mokoetse at (018) 261-6465/6

Bid documents will be available at a non-refundable fee of R100 (R) at the Department of Public Works, Roads and Transport, Ngqika Molema Ndaba Road at Gate House.
 Closing date: 17 February 2012 at 11:00

Department of Public Works, Roads and Transport

Invitation to Bid

Bids are hereby invited for:

Rehabilitation of Road P23/1 from Schweizer-Reneke to Wolmaransstad Bid No: PWRT 105/11 (A, B & C)

Bid No	Project Description	Required CITMP Grading	Submission deadline	Contact Person	Evaluation Criteria
PWRT 105/11 A	Intersections of P23 to D1227 (35km)	R21 PE/PC or higher	09/02/2012 at 10:00 on site	Ms. Van der Elster-Serwotse, Bakgopus Consulting, tel: 083 443 2788	Price = 30 points, BBBEE status level of construction = 10 points
PWRT 105/11 B	Intersections of D1227 to D1555 (30km)	R21 PE/PC or higher	02/02/2012 at 10:00		
PWRT 105/11 C	Intersections of D1555 to Wolmaransstad (18km)	R21 PE/PC or higher	02/02/2012 at 14:00		

Bid documents will be sold at the Department of Public Works, Roads and Transport, Gate House, Ngqika Molema Road, Mmabatho at a fee of R300 each.
 Closing date: 20 February 2012 at 11:00

ENVIRONMENTAL IMPACT ASSESSMENT AND ENVIRONMENTAL MANAGEMENT PROGRAMME (EIA/EMP) AMENDMENT FOR THARISA MINERALS (PTY) LTD

Notice is given in terms of the Mineral and Petroleum Resources Development Act, 28 of 2002 (MPRDA), the National Environmental Management Act, 107 of 1998 (NEMA), the National Environment Management: Air Quality Act, 39 of 2004 (NEM:QA), the National Environment: Waste Act, 59 of 2009 (NEM:WA) and the National Water Act, 36 of 1998 (NWA) of intent by Tharisa Minerals (Pty) Ltd (Tharisa) to carry out the activities described below. In this regard, applications for environmental authorisations have been submitted to the North West Department of Economic Development, Environment, Conservation and Tourism (DEDECT) and the North West Department of Mineral Resources (DMR) and an application for a waste license to the Department of Environmental Affairs. Atmospheric emissions license application will be lodged with the DEDECT (Air Quality Management Unit) in due course.

Reference number

DMR Reference Number: NW30/5/1/2/3/2/1/358

DEDECT Reference Number: NWP/EIA/50/2011

DEA Reference Number: 12/9/11/L675/

Please include these reference numbers on all correspondence.

Name of Proponent

Tharisa is an existing mine which produces chrome and platinum group metals (PGM) concentrates near Marikana town.

Description of proposed activities

Tharisa proposes to construct and operate PGM smelter house and associated infrastructure, to construct and operate a chrome sand drying plant, store hazardous substances (eg. acid), store hazardous waste (eg. used acid), change the tailings dam design and characteristics and change the general surface infrastructure layout at Tharisa Mine.

The following NEMA listed activities are potentially triggered by the proposed projects: Regulation No.544 (13); Regulation No.545 (5); and Regulation No.545 (26).

Location

The proposed activities will be located at Tharisa Mine that is situated on the farms Kafferskraal 342 JQ, Rookoppies 297 JQ and Elandsdrift 467 JQ within the Rustenburg and Madibeng Local Municipalities and Bojanala Platinum District Municipality in the North West Province.

Name of consultant to contact

SLR Consulting (Africa) (Pty) Ltd (SLR)

Contact persons: Ms Stella Moeketse

Postal Address: P.O. Box 1596, Cramerview, 2060

Tel: (011) 467-0945, Fax: (011) 467-0978, E-mail: smoeketse@slrconsulting.com

Notice of public scoping meeting

Two public meetings have been arranged for the project as outlined below. Please contact the people listed above for directions to either meeting. These meetings will be used to provide information on the proposed project.

Meeting A: Focused stakeholder meeting

This meeting will be arranged by invitation.

Meeting B: General public meeting

Languages: English and Setswana

Date: Thursday 16 February 2012

Time: 16H30

Venue: Relief Primary School (Hall)

Registration for IAPs

Should you wish to receive further information please submit your name, contact information, the DEA, DEDECT and DMR reference number/s and interest in the matter in writing to the contact person(s) above within 30 days of publication of this advertisement or at the public scoping meetings.

Additional information

To obtain additional information about the proposed project and/or the environmental assessment process, please contact the above mentioned consultants.

Date of publication of this site notice

20 January 2012

Lapologang Village (Corner D2565 and Montedi roads)



Silver City Water Collection Point (West of Sterkstroom River)



Die Ou Meule Cafe and Liquor Store



Silver City, east of the Sterkstroom River along D1526



PHOTGRAPHS OF THE SITE NOTICES

Tharisa Mine Main Gate: Eastern Side



Tharisa Mine: Western Side, Junction to Lapologang



Piet Retief Primary School



Spruitfontein Central Dealer



Tom's Fried Chicken, Standard Bank Centre, Marikana Town



Buffelspoort Liquor Store, Buffelspoort Shopping Centre



THARISA MINERALS (PTY) LTD

ENVIRONMENTAL IMPACT ASSESSMENT AND ENVIRONMENTAL MANAGEMENT PROGRAMME (EIA/EMP) AMENDMENT

January 2012

INTRODUCTION

Tharisa Minerals (Pty) Ltd (Tharisa) produces chrome and platinum group metals (PGM) concentrate at Tharisa Mine near Marikana town that is located within the Rustenburg and Madibeng Local Municipalities and Bojanala Platinum District Municipality in the North West Province.

Tharisa proposes to: construct a pgm smelter house and associated infrastructure, a chrome sand drying plant, store hazardous substances (eg. acid), store hazardous waste (eg. used acid), change the tailings dam design and characteristics and change the general surface infrastructure layout at Tharisa Mine. The proposed activities will be located on the farms Kafferskraal 342 JQ, Rooikoppies 297 JQ and Elandsdrift 467 JQ (Figure 1).

ENVIRONMENTAL APPROVALS

Prior to the commencement of the proposed projects an environmental assessment process including: a scoping phase, environmental impact assessment (EIA) phase and an environmental management programme (EMP) amendment will be conducted in terms of the Mineral and Petroleum Resources Development Act, 28 of 2002 (MPRDA) and the National Environmental Management Act, 107 of 1998 (NEMA). Both laws apply because the proposed projects will be at a mine and they incorporate a number of listed/identified activities from Regulations R.544, R.545, R546 promulgated in terms of NEMA.

Some of the components of the proposed projects will also require authorisation in terms of the National Environment Management: Air Quality Act, 39 of 2004 (NEM:AQA), National Environment: Waste Act, 59 of 2009 (NEM:WA) and potentially the National Water Act, 36 of 1998 (NWA).

SLR Consulting (Africa) (Pty) Ltd (SLR), an independent firm of environmental consultants, has been appointed by Tharisa to manage the environmental assessment process.

PURPOSE OF THIS DOCUMENT

This document has been prepared by SLR to inform you:

- * about the proposed project;
- * about the environmental assessment process to be followed;
- * of possible environmental impacts; and
- * of how you can have input into the environmental assessment process.

ENVIRONMENTAL PERMISSION TO BE OBTAINED

EIA/EMP amendment approval (DMR)

DMR Reference Number: NW30/5/1/2/3/2/1/358
DMR Contact Person: Mr D. P. Makamu
Tel: 018-487-9830

EIA/EMP amendment approval (DEDECT)

DEDECT Reference Number: NWP/EIA/50/2011
DEDECT Contact Person: Mr R. Nemanashi
TEL: 014-597-3597

EIA/EMP for Waste License (DEA)

DEA Reference Number: 12/9/11/L675/7
DEA Contact Person: Ms Z. Mbili
TEL: 012-310-3870

Air Quality License (DEDECT)

This process will be commissioned once DEDECT has issued a record of decision (RoD) for the above-mentioned EIA/EMP amendment.

Water Use License Application Amendment (DWA)

This process will be commissioned once the EIA/EMP amendment process has been completed.

YOUR ROLE

Public involvement is an essential part of the environmental assessment process.

You have been identified as an interested and affected party (IAP) who may want to be informed about the proposed project and have input into the environmental assessment process.

All comments will be recorded and presented to the project team. You will receive feedback on how your comments have been taken into account and the outcome of the assessment.

HOW TO RESPOND

Responses to this document can be submitted by means of the attached comments sheet or through direct communication with the people listed below.

WHO TO CONTACT

Stella Moeketsi
(011) 4570945 (tel) or
(011) 4670378 (fax) or

smoeketsi@slrconsulting.com

If you would like your comments to be addressed in the scoping process please submit them by:
24 February 2012

SCOPING MEETINGS

Two public meetings have been arranged for the project as outlined below.

Meeting A

Focussed stakeholder meeting

This meeting will be arranged by invitation

Meeting B

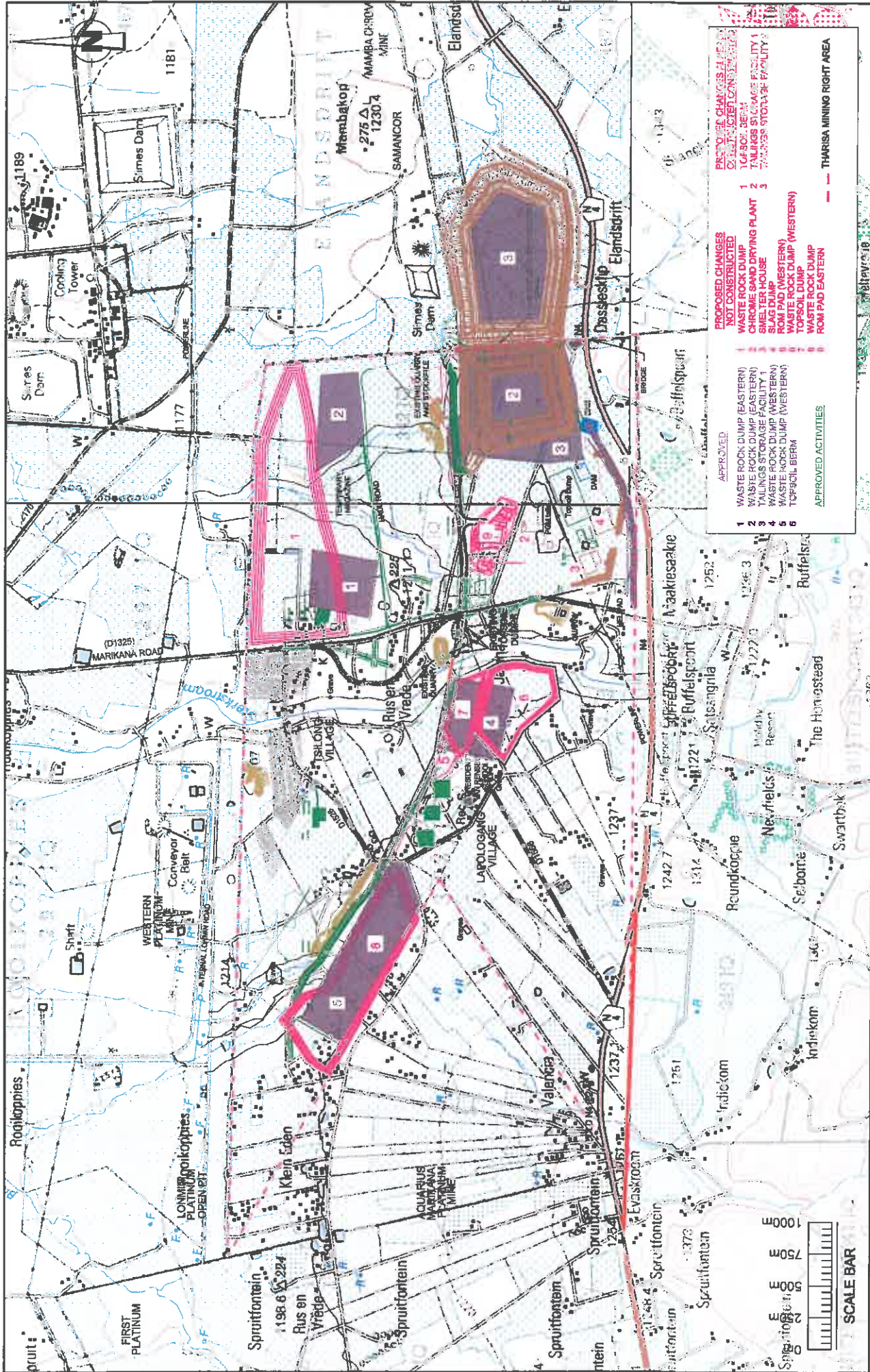
General public meeting

Languages: English and Setswana

Date: Thursday 16 February 2012

Time: 18H30

Venue: Retief Primary School (Hall)



PROJECT OVERVIEW

Construction of a pgm smelter house and associated infrastructure: the proposed smelter house will have a footprint of 200m x 200m and will consist of a concentrate drier, an enclosed 10MW DC Arc furnace, off-gas treatment, dust capture facilities and alloy granulation. Filtered concentrate from the existing platinum group metals (PGM) flotation circuit will be dried to 1% moisture using a combustion fuel such as liquid petroleum gas (LPG), diesel or heavy fuel oil (HFO). The dry concentrate will be fed together with anthracite, fluxes and iron ore into the DC ARC furnace, where an alloy will form at the bottom of the furnace, which is operated under reducing conditions. An inert slag (approximately 14,000m³ per year) will form above the alloy and will be tapped from the furnace and disposed of in the waste rock dumps, tailings dam and/or a dedicated slag dump. The alloy will be intermittently tapped and will be broken down for further treatment in the leach plant. The smelter house will be operated continuously (24 hours per day) to ensure stable process conditions. It is estimated that approximately 171m³ of HFO and 88m³ of LPG will be stored at the smelter house.

The leach plant will make use of acid (either hydrochloric or sulphuric acid) which will be stored (a maximum volume of 100m³) in the complex and be used to leach the base metals (mainly iron) from the PGM Alloy. The purpose of removing the base metals is to increase the concentration of precious metals in the leach residues thus increasing the value of the material. The PGM rich leach residues will be filtered and dried for sale to the precious metal refineries. The used acid will be temporarily stored in the complex prior to collection by a third party who will use it for water treatment. Iron and calcium-sulphate filter cake from the leaching circuit will be combined with the existing mine tailings stream and be disposed of in the tailings dam. Waste water (24 m³ per day) from the bleed-off of cooling circuits will be stored and reused for cooling the furnace slag prior to disposal.

Construction of a chrome sand drying plant: this plant will have a footprint of 6m x 6m and will use a fluid-bed drier to dry approximately 10,000 tons per month of chrome sand using a combustion fuel such as LPG, diesel or HFO. The plant will be located within the general plant area of the existing concentrator plant, and will be operated continuously (24 hours per day). It is estimated that approximately 150m³ of HFO will be stored in the concentrator plant area.

Change of the general infrastructure layout at Tharisa Mine: Tharisa proposes various changes to the mine's general surface layout plan. Some of these are required due to space constraints

and some of these have already taken place due to practicalities on site:

- it is proposed that the open pit high wall on the eastern side of the mine will be increased from 120m to 200m;
- one top soil dump on the western side of the mine is proposed;
- realignment and reshaping of waste rock dumps –it is proposed that there will be three rock waste dumps: two on the western mine and one on the eastern side mine). It is proposed that there will also be a side slopes alteration from 14 degrees to approximately 28 degrees associated with the waste rock dumps;
- two run-of-mine (ROM) pads are proposed; one on each side of the mine (western and eastern sides of the mine);
- it is proposed that there will be an addition of the slag from the above-mentioned smelter complex into the waste rock dump, tailings; and/or a dedicated slag dump;
- the designs and sizes of the tailings facility storages (TSFs) have changed from: TSF.1 – Footprint = 52Ha; Max height = 33m; Volume = 5.4 million m³ and TSF 2 – Footprint = 100Ha; Max height = 31m; Volume = 12.8 million m³ to: TSF 1 Footprint= 69.5Ha; height= 40m; Volume= 7.7 million m³ and TSF 2: Footprint= 86Ha; height= 40m; Volume= 10.2 million m³. No lower permeability liner will be utilised along the inside face of the TSF waste rock; and
- the topsoil berm wall has shifted towards the concentrator plant which is under construction.

Timing: the abovementioned proposed activities will commence immediately after Tharisa has received the record of decisions (RoDs) from the competent regulatory authorities

Employment: during construction, the contractors will use their own personnel and where necessary, the current workforce at Tharisa will be used. A maximum number of 400 jobs will be created during construction and 155 permanent jobs operation phases

Housing: construction employees will be housed off-site in surrounding guest houses, guest farms, dormitories and other formal housing options in the Rustenburg area. During operational phase, the workers will be provided with a housing allowance. No on-site facilities will be provided for the employees

Other services: since the proposed projects will be form part of additional infrastructure at the mine, water and electricity will be sourced from Tharisa Mine. Where necessary, chemical toilets, generators and water tanks will be used to provide the necessary services

MOTIVATION

The motivation for the smelter house and associated infrastructure is economic in nature. The complex will enable Tharisa to recover additional platinum group metals (PGM's) thereby increasing the PGM and chrome value of its products. The purpose of the chrome sand drying plant is to produce higher-value chrome sand suitable for use as foundry sand.

The changes in the tailings character and design will optimise tailings disposal via the installation of toe drains on the "inside toe of the TSF containment walls". These drains will draw down the phreatic surface of the tailings darn thus making it more stable, helping the tailings consolidate and improve the placed density and reducing the hydrostatic pressures acting on the containment walls.

The other changes to the general surface infrastructure will optimise the available space at the mine.

STATUS OF THE EXISTING ENVIRONMENT

This section provides a basic description of the existing status of the environment in and around Tharisa Mine. The proposed activities (smelter house and associated infrastructure, chrome sand drying plant and the general changes of the mine's layout plan) will be constructed on the areas that are already disturbed. More detailed information will be provided in the amended EIA/EMP report.

CLIMATE

The project area is situated in the Highveld Climatic Zone which is characterised by warm to mild with a typical summer rainfall climate (December to February). The average annual temperature for the year is approximately 19°C, with average maximum temperatures ranging between 22°C and 32°C and average minimum temperatures ranging between 2°C and 18°C. Winters are cool and dry with June and July as the coldest months. Winds are generally light and blow predominantly from the north-west. Extreme weather conditions occur in the form of frost (2 to 20 occurrences per annum) and the occasional hail storm.

TOPOGRAPHY

The topography on the Tharisa Mine property is relatively flat with a gentle slope down to the north. The general area has an elevation of approximately 1200meters above mean sea level (mamsl). The natural topography surrounding the mine has been changed by current mining activities to the north and west of the project area. Approximately 2km to the south of the mine lies the Magaliesberg Mountain range Peaks in this part of the Magaliesberg rise to approximately 1400mamsl. The perennial Sterkstroom and the non-perennial tributary of the Elandsdriftspruit run in close proximity to the mine property.

GEOLOGY

Tharisa Mine is situated within the western limb of the Bushveld Complex. Generally, the strike is east-west and the dip is to the north. The target ore body is the Chrome Middle Group (MG1 – MG4).

SOILS

Soils in and around the mine area include those of the orthic phase (Mispah, Glerosa and Hutton), structured forms (Milkwood, Mayo, Shortlands, Sterkspruit, Swartland and Valsrivier), and hydromorphic forms (Sepane, Rensburg and Bonheim). The heavy structured black and dark brown clay soils (Sterkspruit, Mayo and Swartland soil forms) are commonly referred to as "black-turf" or "Cotton Soils".

LAND USE AND LAND CAPABILITY

Land use in and around the mine is a mixture of farming, mining, residential, small business and general community activities. Most land on the mine property has arable capability. Irrigation water is required for cultivation because of the unreliable rainfall in the area. Irrigation water is available from the Buffelspoort Dam by means of the Buffelspoort Government Water Scheme.

BIODIVERSITY

The Tharisa Mine is located within the savannah biome, characterised by open Acacia karoo woodlands, which occur in valleys and slightly undulating plains, and some lowland hills. This vegetation unit is of significance because it is listed as

endangered mainly due to severe impacts from transformation through cultivation and urbanisation.

GROUNDWATER

Ground water in and around the Tharisa Mine is typically between 10m and 30m below ground level and is generally influenced by the topography in the mine area. In general, the flow is from the higher ground in the south to lower lying areas in the north and towards water courses which occur in lower lying areas. The Tharisa Mine is underlain by a shallow upper weathered aquifer and a deeper fractured aquifer. Ground water is generally of good quality and can either be classified as ideal or good. Most of the boreholes in the vicinity of the mine are used for domestic and agricultural (livestock and irrigation) purposes.

SURFACE WATER

The Tharisa Mine is located within the upper reaches of the A21K quaternary catchment, which falls within the Lower Crocodile Secondary catchment and the Crocodile West and Marico Water Management Area. The mine area is drained by the perennial Sterkstroom which flows from the Buffelspoort Dam, south of the N4 in a northerly direction through the centre of the mine area and two unnamed non-perennial tributaries of the Brakspruit, an unnamed non-perennial tributary of the Maretlwane and an unnamed non-perennial tributary of the Elandsdriftspruit.

NOISE

Current noise levels in and around the mine property are representative of a combination of rural, mining and industrial activities. Existing significant noise sources include: mining activities, mechanized farming activities (for example tractors), and road traffic.

AIR

The ambient air quality is significantly influenced by various sources including: mines and industries, biomass burning, fossil fuel burning, farming, dust generated on unpaved roads, vehicle exhaust emissions.

HERITAGE RESOURCES

The most important heritage resources discovered on the mine were stone walled settlements, graveyards, a historical village and homestead, mining heritage remains, isolated and randomly scattered stone tools, historical houses and outdated and discarded agricultural implements. The heritage resources in the broader area are expected to have a potential for the following occurrences:

- historical buildings;
- stone walls; and
- graveyards.

VISUAL

Tharisa Mine is visible from most of the communities and the road network connecting the communities. The aesthetic quality of the general area has already been extensively transformed by existing mining and agricultural operations in the area.

SOCIO-ECONOMIC

Tharisa Mine is located in both Rustenburg and Madibeng Local Municipalities. Education levels in the area are low, unemployment rates are high, the establishment of the un-serviced settlements is increasing. Mining and related industries are the major formal employment provider.

ALTERNATIVES BEING CONSIDERED

The process of considering alternatives, including the "no project" option, is ongoing and will form part of the scoping, EIA and EMP phases of the environmental assessment process.

POTENTIAL PROJECT ISSUES

The construction and operation of the proposed activities may impact on the following environmental components:

- biodiversity,
- dust,
- noise,

- visual,
- heritage resources,
- soils,
- land use,
- surface water, and
- groundwater

ENVIRONMENTAL ASSESSMENT PROCESS

The environmental assessment process provides information on the proposed project and the environment in which it is being undertaken; identifies, **in consultation with IAPs**, the potential negative as well as positive impacts of the proposed project; and reports on measures required to mitigate such impacts to an acceptable level.

IAPs and other stakeholders will receive notification of meetings and report review periods in advance. The likely process steps and time frames are provided below:

STEPS IN THE ASSESSMENT PROCESS
PHASE 1 – Initiation (June- December 2011)
<ul style="list-style-type: none"> ▪ Conduct site visit and identify potential impacts ▪ Consultation with the Department of Mineral Resources (DMR) ▪ Submit notifications to the Department of Economic Development, Environment and Tourism (DEDECT) ▪ Submit notification to the Department of Environmental Affairs (DEA)
PHASE II – Scoping (January 2012- April 2012)
<ul style="list-style-type: none"> ▪ Notify other regulatory authorities and IAPs of the proposed project (<i>via newspaper advertisements, this document and site notices</i>) ▪ Regulatory authority meeting ▪ Key stakeholder meetings ▪ Compile the minutes of all the meetings held for the scoping phase; and ▪ Compile scoping report and make it available for comment to DMR, DEDECT, DEA, other regulatory authorities and other IAPs
PHASE III – EIA / EMP (April- October 2012)
<ul style="list-style-type: none"> ▪ Commission the specialist studies ▪ Assess impacts of proposed project and compile EIA/EMP amendment report ▪ Address all comments from the scoping report review ▪ Make this available to DMR, DEDECT, DEA, other regulatory authorities and other IAPs for review
PHASE IV- EIA/EMP Decision Making (April 2013) END
<ul style="list-style-type: none"> ▪ Circulate notification of record of decision to IAPs

PARTIES INVOLVED IN THE ASSESSMENT PROCESS

PROJECT PROPONENTS

- Tharisa Minerals (Pty) Ltd (Tharisa)

PROJECT TEAM

- SLR
- Tharisa technical team

IAPS

- Landowners
- Surrounding landowners/users
- Surrounding communities
- Non-government organisations and Associations in the area

REGULATORY AUTHORITIES

- Department of Mineral Resources (DMR)
- Department of Economic Development, Environment, Conservation and Tourism (DEDECT),
- Department of Environmental Affairs (DEA);
- Department of Water Affairs (DWA)
- Department of Agriculture (DoA)
- Department of Rural Development and Land Reform (DRDLR)
- South African Heritage Resources Agency (SAHRA)
- Rustenburg Local Municipality (RLM);
- Madibeng Local Municipality (MLM); and
- Bojanala Platinum District Municipality (BPDM)

Please let us know if there are any additional parties that should be involved!

WHO TO CONTACT

Stella Moeketse
 Tel: (011) 467-0945 (tel) or
 Fax: (011) 467-0978 (fax) or
 E-mail: smoeketse@slrconsulting.com

**THARISA MINERALS (PTY) LTD
ENVIRONMENTAL IMPACT ASSESSMENT AND ENVIRONMENTAL MANAGEMENT
PROGRAMME (EIA/EMP) AMENDMENT**

January 2012

DATE	TIME
PARTICULARS OF THE INTERESTED AND AFFECTED PARTY	
NAME	
POSTAL ADDRESS	
POSTAL CODE	
STREET ADDRESS	
POSTAL CODE	
WORK/ DAY TELEPHONE NUMBER	WORK/ DAY FAX NUMBER
CELL PHONE NUMBER	E-MAIL ADDRESS

PLEASE IDENTIFY YOUR INTEREST IN THE PROPOSED PROJECT
PLEASE WRITE YOUR COMMENTS AND QUESTIONS HERE

Please return completed forms to:

Stella Moeketse
SLR
Fax: (011) 467-0978
Tel: (011) 467-0978
E-mail: smoeketse@slrconsulting.com

THARISA MINERALS (PTY) LTD

TLHABOLOLO YA TSHEKATSHEKO YA GO AMEGA GA TIKOLOGO LE LENANELO LA TSAMAISO YA TIKOLOGO (EIA/EMP)

Ferikgong 2012

MATSENO

Tharisa Minerals (Pty) Ltd (Tharisa) e tihagisa khoroumu le setlhopha sa dimetale tsa polatinamo kwa Moepong wa Tharisa gaufi le toropo ya Marikana, e e mo mebasepaleng ya legae ya Rustenburg le Madibeng le Masepala wa Kgaolo ya Bojanala Platinum, mo Pororofenseng ya Bokonebophirima [North West].

Tharisa e tshikinya go: aga moago wa semeletara sa dimetale tsa setlhopha sa polatinamo [pgm] le dipopegotheo tse di tsamaisanang, bodirelo [polante] ba go omisa motlhaba wa khoroumu, poloko ya dilo tse di kotsi (sekao, esiti), poloko ya masalela a a kotsi (sekao esiti e e dirisitsweng), go fetola popego ya letamo la masalela le go fetola sebopego ka kakaretso sa popegotheo e e fa godimo mo Moepong wa Tharisa. Ditiro tse di tshikinngwang di tla nna mo dipolaseng tsa Kafferskraal 342 JQ, Rooikoppies 297 JQ le Elandsdrift 467 JQ (Setshwantsho sa 1).

TETLA YA TIKOLOGO

Pele ga go simololwa ga diporojeke tse di tshikinngwang go tla diriwa tlhabololo ya tiro ya go sekasekiwa ga tikologo go akaretswa: kgato ya patlisiso, kgato ya tshekatsheko ya go amega ga tikologo (EIA) le lenaneo la tsamaiso ya tikologo (EMP), go ya ka Molao wa tlhabololo ya metswedi ya Minerala le Peteroliamo wa bo 28 wa 2002 (MPRDA) le Molao wa bosetshaba wa taolo ya tikologo wa bo 107 wa 1998 (NEMA). Melao eno ka bobedi e a dira ka ntlha ya fa diporojeke tse di tshikintsweng, di tla nna mo moepong mme di akaretswa palo ya ditiro tse di kadilweng/supilweng go tswa mo melawaneng ya R.544, R.545, R546 e e begilweng go ya ka NEMA.

Dingwe tsa dikarolo tsa diporojeke tse di tshikintsweng le tsona di tla batla tetelelo go ya ka Taolo ya Bosetshaba ya Tikologo: Molao wa boleng jwa mowa wa bo 39 wa 2004 (NEM:AQA), Tikologo ya Bosetshaba: Molao wa Masalela wa bo 59 wa 2009 (NEM:WA) le Molao wa Bosetshaba wa Metsi wa bo 36 wa 1998 (NWA).

Setlamo se se ikemetseng sa bagakolodi ba tikologo sa SLR Consulting (Africa) (Pty) Ltd (SLR), se thapilwe ke Tharisa go laola tiro ya go sekaseka tikologo.

MAIKEMISITSO A LEKWALO LE

Lekwalo le, le rulagantswe ke SLR go go itsise ka:

- * porojeke e e tshikintsweng;
- * ka tiro e e tla latelwang ya go sekaseka tikologo;
- * ka kgonagalo ya dikamego tse di ka nnang teng tsa tikologo; le
- * ka fa o ka tshwaelang ka gona mo tirong ya go sekaseka tikologo.

TETLELELO YA TIKOLOGO E E TSHWANETSENG YA BONWA

Kamogelo ya tlhabololo ya EIA/EMP (DMR)

Nomere ya kaelo ya DMR: NW30/5/12/3/2/1/358
Moemedi wa kgolaganano wa DMR: Rre D. P. Makamu
Tel: 018-487-9830

Kamogelo ya tlhabololo ya EIA/EMP (DEDECT)

Nomere ya kaelo ya DEDECT: NWP/EIA/50/2011
Moemedi wa kgolaganano: Rre R. Nemanashi
TEL: 014-597-3597

EIA/EMP ya laesense ya Masalela (DEA)

Nomere ya kaelo ya DEA: 12/9/11/L675/7
Moemedi wa kgolaganano DEA: Mme Z. Mbili
TEL: 012-310-3870

Laesense ya boleng jwa mowa (DEDECT)

Tiro e, e tla diriwa fa DEDECT e sena e neelana ka rekoto ya tshwetso ya tlhabololo e e umakilweng fa godimo ya Tshekatsheko ya karnego ya tikologo [EIA] le Lenaneo la tsamaiso ya tikologo [EMP]

Tlhabololo ya kopo ya tiro ya metsi (DWA)

Tiro e, e tla diriwa fa tlhabololo ya EIA/EMP e sena e digelwa

SEABE SA GAGO

Go amega ga setshaba ke karolo e e botlhoikwa ya tiro ya go sekaseka tikologo.

O supilwe jaaka lekala le le amegang le go nna le kgatlhego, le le batlang go begelwa ka porojeke e e tshikinngwang, le go nna le tshwaelo mo tirong ya go sekaseka tikologo.

Ditshwaelo tsotlhe di tla rekotiwa le go neelwa setlhopha sa porojeke. O tla amogela pegelo ya go re ditshwaelo tsa gago di amogetswe jang le dipholo tsa patlisiso.

KA MO O TSIBOGANG KA TENG

Ditribogelo tsa lekwalo le, di ka diriwa ka letlhare le le gokeletsweng la ditshwaelo kgotsa ka go buisana le motho yo a kwadilweng fa tlase.

YO O GOLAGANANG LE ENA

Stella Moeketse

(011) 4670945 (tel) kgotsa

(011) 4670978 (fax) kgotsa

smueketse@slrconsulting.com

Fa e le go re o batla go re ditshwaelo tsa gago di arabiwe mo tirong ya patlisiso o kopiwa go re o bo o di tshagisitse ka

24 Thlakole 2012

KOPANO TSA SETSHABA

Go rulagantswe dikopano tse pedi tsa setshaba tsa porojeke jaaka go tshaloswa fa tlase.

Kopano ya A

Kopano ya banniileseabe

Kopano e, e tla tshelwa fela ka taletso.

Kopano ya B

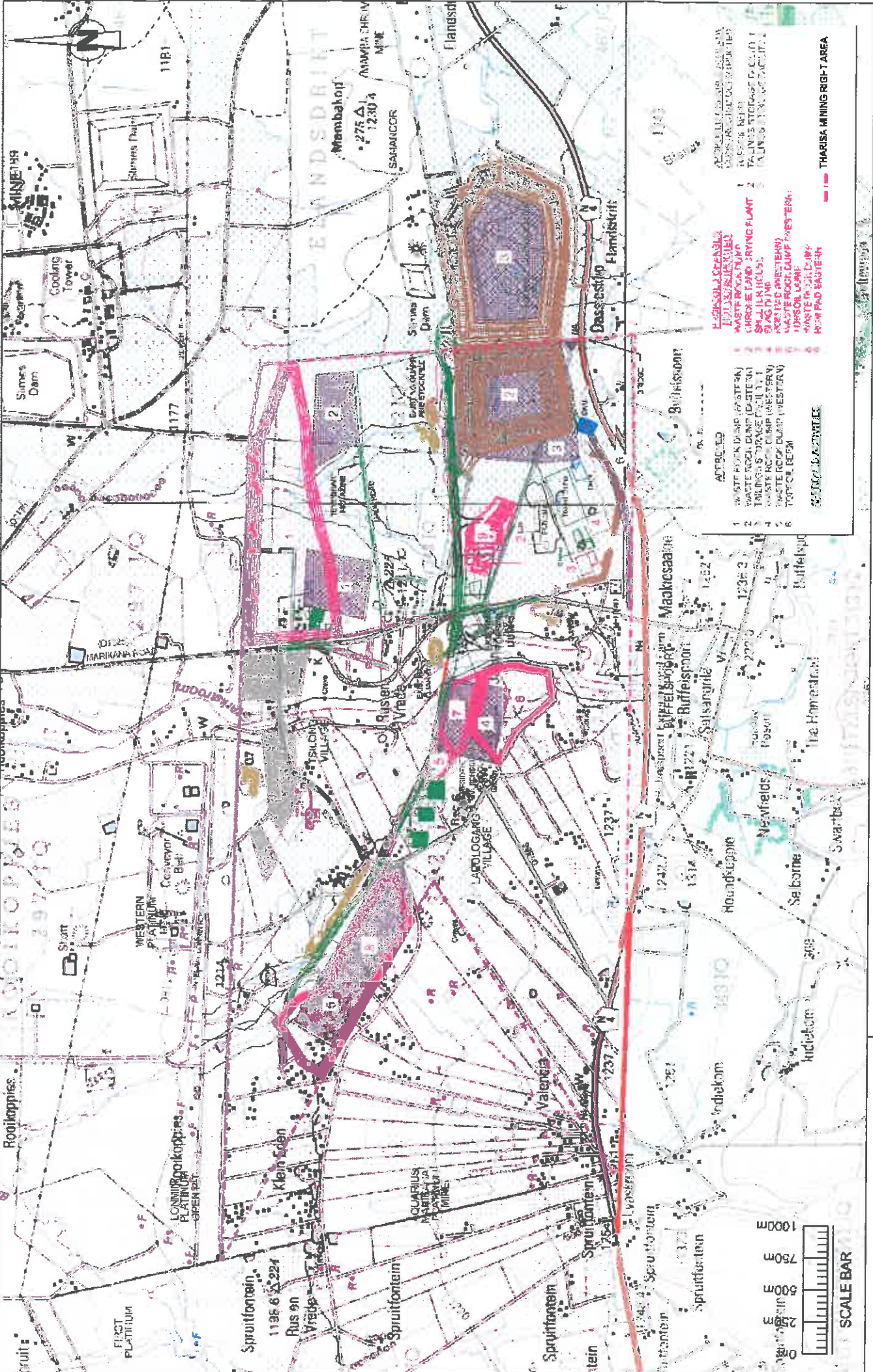
Kopano ya setshaba ka kakaretso

Dipuo: Seesirana le Setswana

Letlha: Labone 16 Thlakole /February 2012

Nako: 16H30

Lefelo: Holo ya Sekolo sa Poraemari sa Retie



TSHOBOLOKO YA POROJEKE

Go agiwa ga moago wa semeletara sa pgm le dipopegotheo tse di tsamaisanang: moago o o tshikinngwang wa semeletara e tla nna wa bogolo ba zoom x zoom mme o tla nna le fa diminerale tse di phepafaditsweng (khonsetereiti) di omisiwang gona, onto e e tswalegileng ya 10MW DC Arc, fa digase tse di tswang di siamisiwang gona, ditshiamelo tsa go ntsha lerole le tsa go dira dithoro tsa aloe (alloy). Khonsetereiti e e sefilweng go tswa mo dimetaleng tsa sethopho se se leng teng sa polatinamo (PGM) e tla omisiwa go fitlha mo bokgoleng jwa 1% ka go dirisa leokwane le le tukang jaaka gase ya seela sa peteroliamo (LPG), disele kgotsa dioli tse di boima tsa dituki (HFO). Khonsentereiti (concentrate) e e omileng e tla tsenngwa le antersaete (anthracite), difolakesese (fluxes) mo ontong ya DC ARC, mme aloe (Alloy) e tla bopega kwa tlase ga onto, e e dirang ka go timolwa bogale. Masalela [Selaka] (a bo kana ka $14,000\text{m}^3$) a tla direga fa godimo ga aloe (alloy) mme a tla pompiwa go tswa mo ontong le go latlhelwa mo dithotobolong tsa masalela a matlapa, mo letamong la seretse kgotsa mo thotobolong e e diretsweng masalela [seleka]. Aloe (alloy) e tla nna e ntshiwa le go thugiwa go siamisiwa go ya pele mo bodirelong ba go tlhatswa. Moago wa semeletara (tlhaoloso) o tla dira ka dinako tsotlhe (diura di le 24 ka letsatsi) go netefatsa tiro e e tsepameng. Go fopholetswa fa HFO e e ka nnang 171m^3 le LPG e e ka nnang 88m^3 e tla bolokiwa mo moagong wa semeletara.

Bodirelo ba bothatswetso (leach plant) bo tla dirisa esiti (e ka nna esiti ya haeterotleroliki kgotsa ya salefiriki) e e tla bolokiwang (mo makesimamong wa bogolo ba 100m^3) mo tikwatikweng le go dirisiwa go ntsha dimetale tsa motheo (bogolo thata tshipi) go tswa mo aloeng (alloy) ya dimetale tsa sethopho sa polatinamo. Maikaelelo a go ntsha dimetale tsa motheo ke go oketsa bogolo ba dimetale tse di bothokwa mo masaleding mme ka go dira jalo go okediwe boleng ba materiale. Masaledi a a nang thata le dimetale tsa sethopho sa polatinamo (PGM) a tla sefiwa le go omisiwa go rekisetswa madirelo a a phepafatsang dimetale tse di bothokwa. Esiti e e dirisitsweng e tla bolokiwa nakwana mo tikwatikweng pele e tsewa ke lekala le lengwe, le le tla e dirisang mo ditirong tsa metsi. Masalela a tshipi le a khalesiamo-salefeiti (calcium-sulphate) go tswa mo bothatswetsong a tla kopanngwa le masalela a a leng teng a moepo, mme a tla latlhelwa mo letamong la masalela. Masalela a metsi (24m^3 ka letsatsi) go tswa mo karolong ya tsidifatsa a tla bolokwa le go dirisiwa gape go folisa selaka pele se latlhiwa.

Go agiwa ga bodirelo ba go omisa motlhaba wa khoroumu: Bodirelo jo, e tla nna jwa bogolo ba $6\text{m} \times 6\text{m}$ mme bo tla dirisa boalo ba go omisa ba seela, go omisa ditone di le 10,000 ka kgwedi tsa motlhaba wa khoroumu, ka go dirisa setuki se se jaaka LPG, disele kgotsa HFO. Bodirelo bo tla nna mo kgaolong ya kakaretso ya bodirelo jo bo leng teng ba khonsentereita (concentrator), mme bo tla dira ka dinako tsotlhe (mo diureng di le 24 tsa letsatsi). Go fopholetswa fa HFO e e ka nnang 150m^3 e tla bolokiwa mo kgaolong ya bodirelo ba khonsentereita.

Go fetolwa ga popegotheo ka kakaretso kwa Moepong wa Tharisa: Tharisa e dira tshikinyo ya diphetolo tse di farologaneng tsa leano la kakaretso la popego e e fa godimo. Dingwe tsa tsona di a tlhokega ka ntlha ya mabaka a lefelo

mme dingwe tsa tsona di setse di dirilwe ka ntlha ya fa go kgonega go re di diriwe mo lefelong:

- go tshikinngwa go re lebotana le le kwa godimo la mosima o o bulegileng mo lethakoreng la bothaba la moepo le okediwe go tloga go 120m go ya go zoom;
- go tshikinngwa go re go dirwe thotobolo ya mmu o o fa godimo e le nngwe mo lethakoreng la bophirima la moepo;
- go baakanngwa le go fetolwa ga dithotobolo tsa masalela a matlapa – go tshikinngwa go re go tla nna le dithotobolo tse tharo tsa masalela a matlapa: tse pedi mo moepong wa bophirima, le e le nngwe mo karolong ya bothaba ya moepo. Go tshikinngwa gape go re thulamo (seloupu) se tla fetolwa, go tloga go digerata di le 14 go ya go tse di ka nnang 28 tse di golaganngwang le dithotobolo tsa masalela a matlapa;
- go tshikinngwa ditsela di le pedi tsa ditswa-moepong/run-of-mine (ROM); e le nngwe mo karolong nngwe le nngwe ya moepo (mo dikarolong tsa bothaba le bophirima ba moepo);
- go tshikinngwa go re go tla nna le masalela (selaka) a tlaleletso go tswa mo tikwatikweng e e umakilweng fa godimo ya semeletara, a a tsenang mo thotobolong ya masalela a matlapa, ya seretse; le/kgotsa thotobolo e e diretsweng masalela (selaka);
- Dipopego le bogolo ba ditshiamelo tsa go boloka masalela (TSF) di fetogile go tloga go TSF.1 – go ya go bogolo ba = 52Ha; Makesimamo wa bogodimo ba = 33m; Mothamo wa = 5.4 million m^3 le TSF 2 – ya bogolo ba = 100Ha; Bogodimo ba = 31m; Mothamo wa = 12.8 million m^3 go fitlha go: TSF 1 ya bogolo ba = 69.5Ha; bogodimo ba = 40m; Mothamo wa = 7.7 million m^3 le TSF 2: Bogolo ba = 86Ha; bogodimo ba = 40m; Mothamo wa = 10.2 million m^3 . Ga go boalo jo bo kwa tlase ba thibelo bo bo tla dirisiwang go ithara le karolo e e ka mo teng ya masalela a matlapa a TSF; le
- Lebota la thota ya mmu o o fa godimo le suteletse kwa ntlheng ya bodirelo ba khonsentereita (concentrator) e e tshwaraganeng le go agiwa.

Nako: ditiro tse di tshikinngwang tse di umakilwang fa godimo di tla simololwa ka bonako, morago ga go re Tharisa e amogele rekoto ya tshwetso go tswa mo bathating ha taolo ba ba maleba.

Thapo: Mo nakong ya kago borakonteraka ba tla dirisa badiri ba bona mme fa go tlhokegang teng, badiri ba jaanong ba Tharisa ba tla dirisiwa. Go tla tlhologa makesimamo wa palo ya ditiro di le 400 mo nakong ya kago le ditiro tsa leruri di le 155 mo dikgatong tsa go dira

Matlo badiri mo nakong ya kago ba tla newa bonno mo matlong a baeng a a seng mo saeterig/lefelong a a mo tikologong, dipolasa tsa baeng, diphaposi tsa bonno le matlo mangwe a tlwaelo mo kgaolong ya Rustenburg. Mo kgatong ya go dira, badiri ba tla fwa tshetele ya bonno. Ga go ditshiamelo dipe tsa bonno tse di tla newang badiri mo saeterig/lefelong

Ditirelo tse dingwe: ka ntlha ya fa diporojeke tse di tshikinngwang e tla nna karolo ya popegotheo ya tlaleletso mo moepong, metsi le motlakase di tla bonwa go tswa mo moepong wa Tharisa. Fa go tlhokegang teng, matlwana a bothuseitso a dikhemikale, dijeneretara le ditanka tsa matsi di tla dirisiwa go rebola ditirelo tse di tlhokegang.

TLHABEGO

Tlhabeo ya moago wa semeletara le dipopegotheo tse di tsamaisanang le ona ke ya mabaka a ikonomi. Tikwatikwe e tla kgontsha Tharisa go bona dimetale tsa tlaleletse tsa polatinamo (PGM) mme ka go dira jalo, e oketse boleng ba khoroumu le dikumo tsa yona. Maikemisetsa a bodirelo ba go omisa motlhaba wa khoroumu, ke go tlhagisa khoroumu ya boleng jo bo kwa godimo e e siametseng go dirisiwa jaaka motlhaba o o dirisiwang.

Diphetolo mo sebopegong sa masalela di tla tokafatsa go latlhiwa ga masalela, ka go tlhongwa ga ditereini tsa monyelo mo "teng ga tsamaiso ya mabotaria a go tshwara TSF". Ditereini tse di tla gugela tlase boalo jwa motswedi wa letarno la masalela mme ka go dira jalo di tla dira go re le tsepame, go thusa go re masalela a kopane le go tokafatsa mbothamo wa lona le go fokotsa kgatelelo ya haeteroestetiki (hydrostatic) mo mabotaneng a lona.

Diphetolo tse dingwe tsa popegotheo ka kakaretso e e fa godimo di tla dira go re sebaka se se leng teng mo moepong se dirisiwe sentle thata.

MAEMO A TIKOLOGO

Karolo e, e tlhagisa tlhaloso ya motheo ya maemo a a leng teng a tikologo mo teng le go potologa Moepo wa Tharisa. Ditiro tse di tshikinnwang (moago wa semeletara le popegotheo e e tsamaisanang, bodirelo ba go omisa motlhaba wa khoroumu le phetolo ya kakaretso ya leano la sebopego sa moepo) di tla agiwa mo dikgaolong tse di setseng di goreleditse. Tshedimosetso e e tletseng ka botlalo e tla tlhagisiwa mo pegeleng e e tlhabolotsweng ya Tshekatsheko ya kamego ya tikologo le Lenaneo la tsamaiso ya tikologo.

TLELAEMETE

Kgaolo ya porojeke e mo Zounung ya Tlelaemete ya naga-godimo (Highveld Climatic Zone) e e diriwang ke tlelaemete e e bothito le e e magareng ya pula ya selemo (Sedimothole go fitlha Tlhakole). Palogare ya temperetsha ya ngwaga ke ya bokana ka 19°C, ka temperetsha ya makesimamo wa palogare e e magareng ga 22°C le 32°C le palogare ya temperetsha e e potlana e e magareng ya 2°C le 18°C. Mariga a marutshwana le go omelela mme dikgwedi tsa Seetebosigo le Phukwi ke tsona tse di tsididi thata. Diphefo ka kakaretso ke tse di bothoswana mme gantsi di foka go tswa bokone-bophirima. Maemo a a feteletseng a bosa a nna mo sebopegong sa segagane (ka tiragalo tse pedi go fitlha go di le 20 ka ngwaga) mme ka sewelo go nna le dipula tsa sefako.

TOPOKERAFI [TIKOLOGO]

Tikologo mo thotong ya Moepo wa Tharisa e pharaletse ka thulamo e e edileng go ya kwa bokone. Kgaolo ka kakaretso e bogodimo ba bokana ka dimitara di le 1200 mo boalong ba lewatle (mamsl). Tikologo ya tlhago e e potologileng moepo e fetotse ke ditiro tsa jaanong tsa moepo mo bokone le mo bophirima ba kgaolo ya porojeke. Bokana ka 2km kwa borwa jwa moepo go motseletsele wa dithaba tsa Magaliesberg, mme karolo e ya Magaliesberg e tlhatloga bokana ka 1400mamsl. Noka e e eielang ruri ya Sterkstroom le molapo o o sa eielang ruri wa Elandsdriftspruit di elela gaufi le thoto ya moepo.

POPEGO YA LEFATSHE [JIOLOJI]

Moepo wa Tharisa o mo teng ga karolo ya bophirima ya tikwatikwe ya Bushveld. Ka kakaretso boalo (strike) bo mo botlhababophirima fa boteng (dip) bo le kwa bokone. Karolo e e lebilweng ya manya ke ya setlhopho sa bogare sa khoroumu (MG1-MG4)

MEBU

Mebu mo teng le go dikologa kgaolo ya moepo e akaretsa ya kgato ya orthic (Mispah, Glerosa le Hutton), dipopego ke tsa (Milkwood, Mayo, Shortlands, Sterkspruit, Swartland le Valsrivier) le dipopego tsa hydromorphic (Sepane, Rensburg le Bonheim). Mebu ya sebopego se se boima ya seloko se se ntsho le se se bohunou bo bo phitshwa (Sterkspruit, Mayo le ya Swartland) ka tlwaelo e bidiwa "black-turf" kgotsa "Mebu ya Cotton".

TIRISO YA LEFATSHE LE BOKGONI JWA LONA

Tiriso ya lefatshe mo teng le go dikologa moepo ke motswako wa temothuo, moepo, bonno, dikgwebo tse di potlana le ditiro tsa kakaretso tsa setshaba. Bontsi jwa lefatshe mo thotong ya moepo bo na le bokgoni jwa go ka lemiwa. Metsi a nosetso a tlhokwa mo temong ka ntsha ya go na ga pula go go sa ikanyegeng mo kgaolong. Metsi a go nosetsa a teng go tswa mo letamong la Buffelspoort ka tiriso ya sekema sa mmuso sa metsi sa Buffelspoort.

DIMELA LE DIPHOLOGOLO

Moepo wa Tharisa o mo karolong ya sabana (savannah), e e bopilweng ke Acacia karoo woodlands, e e tlhagelelang mo mekgatsheng le dipowa tse di yang godimo le tlase go le go nnye le dithabana tse di kwa tlase. Uniti eno ya dimela e botlhokwa go nne e tlhaloswa e le mo kotsing, bogolo thata ka ntsha ya dikamego tse dikgolo tsa phetolo ka ntsha ya temo le botoropo.

METSI A A MO MMUNG

Metsi a a mo mmung mo teng le go dikologa Moepo wa Tharisa a magareng ga 10m le 30m mo teng ga lefatshe mme ka kakaretso a tlhotlheletswa ke popego ya kgaolo ya moepo. Ka kakaretso, kelelo e tswa mo dikgaolong tse di kwa godimo mo bortwa go ya mo dikgaolong tse di kwa tlase mo bokone, go ya kwa ditseleng tsa metsi tse di tlhagelelang mo dikgaolong tse di kwa tlase. Moepo wa Tharisa o itharile mo motsweding o o seng boteng wa metsi o o fa godimo le motswedi o o phatlhalatseng wa metsi o o boteng. Ka

kakaretso metsi a a mo mmung ke a boleng jo bo ntle mme a ka tsewa a tshwanetse kgotsa a siame. Bontsi jwa mesima ya metsi e e mo tikologong ya moepo e dirisetswa metsi a legae le a mabaka a temothuo (diruiwa le no setso).

METSI A FA GODIMO

Moepo wa Tharisa o fitlhelwa mo bodutelong jwa A21K Quaternary, bo bo welang mo bodutelong jo bogolwane jwa karolo e e kwa tlase ya noka ya Crocodile le ya Bophirima ba Crocodile le Kgaolo ya taolo ya metsi ya Marico. Metsi a kgaolo ya moepo a tsena mo nokeng ya Sterkstroom, e e elelang ka gale go tswa Letamong la Buffelspoort kwa borwa ba N4 mo ntlheng ya bokone, go kgabaganya bogare jwa kgaolo ya moepo le melapo e mebedi e e sa elelang ka gale e e senang maina ya Brakspruit, molapo o o sa fiwang leina o o sa nneng le metsi ka gale o o elelang mo Maretlwane le molapo o o sa elelang ruri o leina la ona le sa itsiweng o o elelang mo Elandsdriftspruit.

LERATLA [MODUMO]

Maemo a jaanong a leratla mo teng le go potologa thoto ya moepo ke a a tswakaneng a ditiro tsa selegae, moepo le madirelo. Metswedi e e leng teng e megolo ya leratla e akaretsa: ditiro tsa go epa, ditiro tsa go lema ka dimatshini (sekao ke diterekere) le pharakano ya mo tseleng.

MOWA

Boleng jwa maemo a mowa bo tlotlhelwa thata ke metswedi e e farologaneng e e akaretsang: meepo le madirelo, phiso ya dilo, phiso ya dituki, temothuo, lerole le le bagegang mo ditseleng tse di sa aladiwang sekontiri/pheifing, mesi ya diokesoso tsa dijanaga.

METSWEDI YA BOSWA

Metswedi ya boswa e e botlhokwa thata e e bonweng mo moepo e ne e le bonno jwa mabotana a matlapa, mabitla, motse wa hisitori le legae, masalela a boswa jwa moepo, didirisiwa tse di tlhagelelang fale le fale tse di phatlhaletseng tsa matlapa, matlo a hisitori le didirisiwa tsa kgale tse di latlhilweng tsa temothuo. Metswedi ya boswa mo kgaolong e e anameng go solofetswe fa e tla nna le kgonagalo ya tlhagelelo ya:

- Dikago tsa hisitori;
- Mabotana a matlapa; le
- mabitla.

PONO

Moepo wa Tharisa o bonala go tswa mo bontsing jwa metse/setshaba le mo mafaratlhatlheng a tsela a a gokaganyang metse/ditshaba. Boleng ba kakaretso ba kgaolo bo setse bo fetotswe thata ke ditiro tsa moepo o o leng teng le tsa temothuo ya kgaolo.

IKONOMI- LEAGO

Moepo wa Tharisa o mo Mebasepaleng ya Legae ya Rustenburg le Madibeng. Maemo a thuto mo kgaolong a kwa tlase, kelo ya botlhokatiro e kwa godimo, go tlhomiwa ga bonno bo bo senang ditirelo bo a oketsega. Batlamedi ba bagolo ba ditiro ke moepo le madirelo a a tsamaisanang le ona.

TSE DINGWE TSE DI NAGANWANG

Tiro ya go nagana tse dingwe tse di ka dirwang, go akaretswa tlhopho "ya go sa dirwerig ga porojeke" e tswelletse mme e tla nna karolo ya patlisiso ya Tshekatsheko ya dikgato tsa kamego ya tikologo [EIA] le tsa Lenaneo la tsamaiso ya tikologo [EMP] tsa tiro ya tshekatsheko ya tikologo.

DINTLHA TSE DI KA NNANG TENG TSA POROJEKE

kago le tsamaiso ya ditiro tse di tshikinngwang e ka ama dikarolo tse di latelang tsa tikologo:

- dimela le diphologolo,
- lerole,
- leratla [modumo],
- pono,
- metswedi ya boswa,
- mebu,
- tiriso ya lefatshe,
- metsi a a fa godimo, le
- metsi a a mo mmung

TIRO YA GO SEKASEKA TIKOLOGO

Tiro ya go sekaseka tikologo e tlogisa tshedimosetso ya porojeke e e tshikinngwang le tikologo e e diriwang mo go yona; e supa, ka kgolagano le Bakgatlhegi le Baamegi, dikamego tse di ka nanneng tse di phosetifi le tse di neketifi tsa porojeke e e tshikinngwang; le go bega ka dikgato tse di tlokegang go tlofatsa dikamego tsa go nna jalo, go fitlha mo maemong a amogelesegang.

Baamegi le Bakgatlhegi le bannileseabe ba bangwe ba tla amogela go le pele kitsiso ya dikopano le paka ya go lebisisa pegelo. Dikgato tse di ka tsewang le dinako di tlogisiwa fa tlase:

DIKGATO TSA TIRO YA TSHEKATSHEKO
KGATO YA 1 – Tshimololo (Seetebosigo- Sedimonthole 2011)
<ul style="list-style-type: none"> ▪ Ketelo ya saete [lefelong] le go supa dikamego tse di ka nanneng teng ▪ Kgolagano le Lefapha la metswedi ya minerala (DMR) ▪ Go neela Lefapha la Tlhabololo ya ikonomi, Tikologo le Bojanala (DEDECT) dikitsiso. ▪ Go naya Lefapha la merero ya tikologo (DEA) kitsiso
KGATO YA BO II – Patlisiso (Ferikgong 2012- Moranang 2012)
<ul style="list-style-type: none"> ▪ Go itsise bathati ba bangwe ba taolo le Bakgatlhegi le Baamegi ka porojeke e e tshikinngwang (<i>ka makwalokgang, lekwalo le, le dikitsiso tsa mo lefelong</i>) ▪ Kopano ya bathati ba taolo ▪ Dikopano tsa bannileseabe bagolo ▪ Go diriwa ga metsotso ya dikopano tsotlhe tse di tshwaretsweng kgato ya patlisiso; le ▪ Go diriwa ga pegelo le go e rebolela DMR, DEDECT, DEA le bathati ba bangwe ba taolo le Baamegi le Bakgatlhegi ba bangwe go dira ditshwaelo.
KGATO YA BO III – EIA / EMP (Moranang - Diphallane 2012)
<ul style="list-style-type: none"> ▪ Go diriwa ga dipatlisiso tsa bosepešelisiti ▪ Go sekaseka dikamego tsa porojeke e e tshikinngwang le go dira pegelo e e tlhabolotsweng ya Tshkatsheko ya kamego ya tikologo [EIA] le Lenaneo la tsamaiso ya tikologo [EMP] ▪ Go araba ditshwaelo tsotlhe go tswa mo tshobolokong ya pegelo ya patlisiso ▪ Go e neela DMR, DEDECT, DEA, le bathati ba bangwe ba taolo go e lebisisa
KGATO YA BO IV- Go tsaya tshwetso ka EIA/EMP (Moranang 2013) BOKHUTLO
<ul style="list-style-type: none"> ▪ Go naya Bakgatlhegi le Baamegi rekoto ya tshwetso

MAKALA A A AMEGANG MO TIRONG YA TSHEKATSHEKO

BATLHAGISI BA POROJEKE

- Tharisa Minerals (Pty) Ltd (Tharisa)

SETLHOPHA SA POROJEKE

- SLR
- Setlhopha sa setegeniki sa Tharisa

BAKGATLHEGI LE BAAMEGI

- Beng ba lefatshe
- Beng ba lefatshe/badirisi ba ba mo tikologong
- Ditshaba tse di mo tikologong
- Mekgatlho e e seng ya mmuso le
- Dintlamo mo kgaolong

BATHATI BA TAOLO

- Lefapha la metswedi ya minerala (DMR)
- Lefapha la tlhabololo ya ikonomi, tikologo, tshomarelo le bojanala (DEDECT);
- Lefapha la merero ya tikologo (DEA);
- Lefapha la merero ya metsi (DWA)
- Lefapha la temothuo (DoA)
- Lefapha la tlhabololo ya magae le phetolo ya lefatshe (DRDLR)
- Lekala la metswedi ya boswa la Aforika Borwa (SAHRA)
- Masepala wa legae wa Rustenburg (RLM);
- Masepala wa legae wa Madibeng (MLM), le
- Masepala wa kgaolo ya Polatinaro ya Bojanala (BPDM)

Tsweetswee re itsise fa go na le makala mangwe a tlaletso a a tshwanetseng go amega!

YO O GOLAGANANG LE ENE

Stella Moeketse
Mogala: (011) 467-0945 (tel) or
Fekese: (011) 467-0978 (fax) or
E-mail: smoeketse@slrconsulting.com

Stella Moeketse

From: Victoria Tucker
Sent: 25 January 2012 10:55 AM
To: asalomon@sahra.org.za
Cc: Stella Moeketse
Subject: FW: Tharisa Minerals - Environmental Impact Assessment and Environmental Management Programme (EIA/EMP) Amendment
Attachments: BID_Tharisa_EMPAmend_Eng_20Jan2012 PDF.pdf; T014-12 Figure 1 for Bid with Amendments Layout1 (1)_Email.jpg

Dear Regulatory Authority,

Tharisa Minerals (Pty) Ltd (Tharisa) is an existing chrome and platinum group metals (PGM) concentrate producing mine that is located near Marikana town in the Rustenburg and Madibeng Local Municipalities and Bojanala Platinum District Municipality in the North West Province. Tharisa proposes to construct a PGM smelter house and associated infrastructure, a chrome sand drying plant, store hazardous substances (eg. acid), store hazardous waste (eg. used acid), change the tailings dam design and characteristics and change the general surface infrastructure layout at Tharisa Mine. The proposed activities will be located at the mine, on the farms Kafferskraal 342 JQ, Rooikoppies 297 JQ and Elandsdrift 467 JQ.

Prior to the commencement of the proposed projects an environmental assessment process including: a scoping phase, environmental impact assessment (EIA) phase and an environmental management programme (EMP) amendment. SLR Consulting (Africa) (SLR), formerly known as Metago Environmental Engineers (Pty) Ltd (Metago), an independent firm of environmental consultants, has been appointed by Tharisa to manage the environmental assessment process.

As public involvement is an essential component of the environmental assessment process, you have been identified as the regulatory authorities who may be interested in hearing more about the project and who may wish to provide input into the environmental assessment process. In this regard, please find attached a copy of the project's background information document (BID) prepared by SLR for your perusal and comments.

Please note that a representative from SLR will be in contact telephonically to make arrangements to set up a site meeting/ scoping meeting with a representative from your department and other Regulatory Authorities.

If you have any questions in this regard please contact the undersigned.

Regards

Stella Moeketse
Environmental Assessment Practitioner
SLR Consulting (Africa) (Pty) Ltd

Email: smoeketse@slrconsulting.com
Mobile: +27 72 380 5609
Tel: +27 11 467 0945
Ext: 2010
Fax: +27 11 467 0978

SLR Africa (Block 7)
Fourways Manor Office Park
2191, Cnr Roos and Macbeth Streets

Fourways, Johannesburg
South Africa, Johannesburg, 2060, South Africa

Victoria Tucker
SLR Consulting (Africa) (Pty) Ltd

Email: vtucker@slrconsulting.com
Mobile: +27 83 533 3576
Tel: +27 11 467 0945
Ext: 2007
Fax: +27 11 467 0978

SLR Africa (Block 7)
Fourways Manor Office Park
2191, Cnr Roos and Macbeth Streets
Fourways, Johannesburg
South Africa, Johannesburg, 2060, South Africa

Victoria Tucker
SLR Consulting (Africa) (Pty) Ltd

Email: vtucker@slrconsulting.com
Mobile: +27 83 533 3576
Tel: +27 11 467 0945
Ext: 2007
Fax: +27 11 467 0978

SLR Africa (Block 7)
Fourways Manor Office Park
2191, Cnr Roos and Macbeth Streets
Fourways, Johannesburg
South Africa, Johannesburg, 2060, South Africa

Stella Moeketse

From: Victoria Tucker
Sent: 01 February 2012 10:45 AM
To: nemutandanit@dwaf.gov.za
Subject: FW: THARISA MINERALS (PTY) LTD. EIA/EMP AMENDMENT I. REGULATORY AUTHORITIES SCOPING MEETING
Attachments: BID_Tharisa_EMPAmend_Eng_20Jan2012 PDF.pdf; T014-12 Figure 1 for Bid with Amendments Layout1 (1)_Email.jpg
Importance: High

Good morning Mr Nemutandani

The Regulatory Authorities meeting will be held on the 21st of February 2012 at Tharisa Mine Boardroom at 11am. If there are not enough people that are able to attend on the 21st, then the 22nd or 23rd will be the alternative dates.

Which date would suit you best?

Kind regards

Victoria Tucker
SLR Consulting (Africa) (Pty) Ltd

Email: vtucker@slrconsulting.com

Mobile: +27 83 533 3576

Tel: +27 11 467 0945

Fax: +27 11 467 0978

SLR Africa (Block 7)
Fourways Manor Office Park
2191, Cnr Roos and Macbeth Streets
Fourways, Johannesburg
South Africa, Johannesburg, 2060, South Africa



Confidentiality Notice and Disclaimer

This communication and any attachment(s) contains information which is confidential and may also be legally privileged. It is intended for the exclusive use of the recipient(s) to whom it is addressed. If you are not the intended recipient, any disclosure, copying, distribution or any action taken or omitted to be taken in reliance on it, is prohibited and may be unlawful. If you have received this communication in error please email us by return mail and then delete the email from your system together with any copies of it. Please note that you are not permitted to print, copy, disclose or use part or all of the content in any way.

Emails and any information transmitted thereunder may be intercepted, corrupted or delayed. As a result, SLR does not accept any responsibility for any errors or omissions howsoever caused and SLR accepts no responsibility for changes made to this email or any attachment after transmission from SLR. Whilst all reasonable endeavours are taken by SLR to screen all emails for known viruses, SLR cannot guarantee that any transmission will be virus free.

Any views or opinions are solely those of the author and do not necessarily represent those of SLR Management Ltd, or any of its subsidiaries, unless specifically stated.

SLR Consulting (South Africa) (Proprietary) Limited and SLR Consulting (Africa) (Proprietary) Limited are both subsidiaries of SLR Management Ltd.

Registered Office: Unit 2 Fourways Manor Office Park, Cnr Roos and Macbeth Street, Fourways, 2055, Gauteng, South Africa

Stella Moeketse

From: Victoria Tucker
Sent: 14 February 2012 02:30 PM
To: 'mmohlalisi@nwpg.gov.za'; 'smukhola@nwpg.gov.za'; 'rmananashi@nwpg.gov.za'; 'DTMahlaku@nwpg.gov.za'; 'PMATLAPENG@nwpg.gov.za'; 'percy.matlapeng@gmail.com'; 'oskosana@nwpg.gov.za'; 'clast@nwpg.gov.za'; 'jnkosi@ruraldevelopment.gov.za'; 'JKNkosi@dla.gov.za'; 'dkmolebatsi@ruraldevelopment.gov.za'; 'kmekegoe@rustenburg.gov.za'; 'tienake@rtbcc.co.za'; 'gomolemomoalusi@madibeng.gov.za'; 'sammkhabela@madibeng.gov.za'; 'info@rainstar.co.za'; 'lmahlangu@environment.gov.za'; 'zmbili@environment.gov.za'; 'jmarais@deat.gov.za'; 'nemutandanit@dwaf.gov.za'; 'ishmaelm@nda.agric.za'
Cc: Stella Moeketse
Subject: Tharisa Mine: EMP Amendment I- Scoping/Site Meeting Invitation
Attachments: BID_Tharisa_EMPAmend_Eng_20Jan2012 PDF.PDF; T014-12 Figure 1 for Bid with Amendments Layout1 (1)_Email.jpg

Tracking:	Recipient	Delivery	Read
	'mmohlalisi@nwpg.gov.za'		
	'smukhola@nwpg.gov.za'		
	'rmananashi@nwpg.gov.za'		
	'DTMahlaku@nwpg.gov.za'		
	'PMATLAPENG@nwpg.gov.za'		
	'percy.matlapeng@gmail.com'		
	'oskosana@nwpg.gov.za'		
	'clast@nwpg.gov.za'		
	'jnkosi@ruraldevelopment.gov.za'		
	'JKNkosi@dla.gov.za'		
	'dkmolebatsi@ruraldevelopment.gov.za'		
	'kmekegoe@rustenburg.gov.za'		
	'tienake@rtbcc.co.za'		
	'gomolemomoalusi@madibeng.gov.za'		
	'sammkhabela@madibeng.gov.za'		
	'info@rainstar.co.za'		
	'lmahlangu@environment.gov.za'		
	'zmbili@environment.gov.za'		
	'jmarais@deat.gov.za'		
	'nemutandanit@dwaf.gov.za'		
	'ishmaelm@nda.agric.za'		
	Stella Moeketse	Delivered: 2012/02/14 02:30 PM	Read: 2012/02/14 02:52 PM

**THARISA MINERALS (PTY) LTD
EIA/EMP AMENDMENT I**

SCOPING/ SITE MEETING INVITATION FOR:

THE PROPOSED CONSTRUCTION AND OPERATION OF THE SMELTER HOUSE AND ASSOCIATED INFRASTRUCTURE, CONSTRUCTION AND OPERATION OF THE CHROME SAND DRYING PLANT, STORAGE OF HAZARDOUS SUBSTANCES, CHANGES TO THE DESIGN AND CHARACTERISTICS OF THE TAILINGS STORAGE FACILITY AND CHANGES TO THE GENERAL LAYOUT OF THE MINE

Dear Regulatory Authorities,

As you are all aware, Tharisa Minerals (Pty) Ltd (Tharisa) is an existing chrome and platinum group metals (PGM) concentrate producing mine that is located near Marikana town in the Rustenburg and Madibeng Local Municipalities and Bojanala Platinum District Municipality in the North West Province. Tharisa proposes to construct a PGM smelter house and associated infrastructure, a chrome sand drying plant, store hazardous substances (eg. acid), store hazardous waste (eg. used acid), change the tailings dam design and characteristics and change the general surface infrastructure layout at Tharisa Mine. The proposed activities will be located at the mine, on the farms Kafferskraal 342 JQ, Rooikoppies 297 JQ and Elandsdrift 467 JQ.

Prior to the commencement of the proposed projects an environmental assessment process including: a scoping phase, environmental impact assessment (EIA) phase and an environmental management programme (EMP) amendment. SLR Consulting (Africa) (SLR), an independent firm of environmental consultants, has been appointed by Tharisa to manage the environmental assessment process.

As public involvement is an essential component of the environmental assessment process, you have been identified as the regulatory authority who may be interested in hearing more about the project and who may wish to provide input into the environmental assessment process. In this regard, please find attached a copy of the project's background information document (BID) prepared by SLR for your perusal and comments.

This letter serves to invite you to the focused scoping/ site meeting for Regulatory Authorities. The details for the meeting are provided below:

- **Date:** 21st February 2012
- **Venue:** Tharisa Mine Main Boardroom
- **Time:** 11h00

Attached please find a copy of the project's background information document (BID) prepared by SLR for your perusal and comments.

If you have any questions in this regard please contact the undersigned.

Regards

Stella Moeketse
Environmental Assessment Practitioner
SLR Consulting (Africa) (Pty) Ltd

Email: smoeketse@slrconsulting.com

Mobile: +27 72 380 5609

Tel: +27 11 467 0945

Ext: 2010

Fax: +27 11 467 0978

SLR Africa (Block 7)
Fourways Manor Office Park
2191, Cnr Roos and Macbeth Streets
Fourways, Johannesburg
South Africa, Johannesburg, 2060, South Africa

Stella Moeketse

From: Victoria Tucker
Sent: 17 February 2012 01:17 PM
To: kmekgoe@rustenburg.gov.za; tlenake@rtbcc.co.za
Cc: Stella Moeketse
Subject: Directions to Tharisa Minerals for Regulatory Authority Scoping Meeting
Attachments: BID_Tharisa_EMPAmend_Eng_20Jan2012 PDF.PDF; T014-12 Figure 1 for Bid with Amendments Layout1 (1)_Email.jpg

Tracking:	Recipient	Read
	kmekgoe@rustenburg.gov.za	
	tlenake@rtbcc.co.za	
	Stella Moeketse	Read: 2012/02/17 01:31 PM

Hi Kelebogile Mekgoe

As per our telephonic conversation yesterday, below are the directions to Tharisa Minerals for the Regulatory Authority Scoping Meeting on Tuesday 21 February 2012.

Tharisa Mine is located to the left of Marikana/Buffelspoort Toll Gate (from Rustenburg and right from Pretoria direction), take Marikana/Buffelspoort Off-ramp from the N4, it is the second property on the main road to Marikana town and the main gate is to right along the Marikana road.

Attached please find a copy of the project's background information document (BID) prepared by SLR for your perusal and comments.

For any further information please contact the undersigned.

Kind regards

Stella Moeketse
Environmental Assessment Practitioner
SLR Consulting (Africa) (Pty) Ltd

Email: smoeketse@slrconsulting.com

Mobile: +27 72 380 5609

Tel: +27 11 467 0945

Ext: 2010

Fax: +27 11 467 0978

SLR Africa (Block 7)
Fourways Manor Office Park
2191, Cnr Roos and Macbeth Streets
Fourways, Johannesburg
South Africa, Johannesburg, 2060, South Africa

Victoria Tucker
SLR Consulting (Africa) (Pty) Ltd

Email: vtucker@slrconsulting.com

Mobile: +27 83 533 3576

Tel: +27 11 467 0945

Ext: 2007

Fax: +27 11 467 0978

SLR Africa (Block 7)

Fourways Manor Office Park

2191, Cnr Roos and Macbeth Streets

Fourways, Johannesburg

South Africa, Johannesburg, 2060, South Africa

Stella Moeketse

From: Victoria Tucker
Sent: 20 February 2012 10:47 AM
To: motlalekgomommope@madibeng.gov.za
Cc: Stella Moeketse
Subject: FW: Tharisa Mine: EMP Amendment I- Scoping/Site Meeting Invitation
Attachments: BID_Tharisa_EMPAmend_Eng_20Jan2012 PDF.PDF; T014-12 Figure 1 for Bid with Amendments Layout1 (1)_Email.jpg

Tracking:	Recipient	Read
	motlalekgomommope@madibeng.gov.za	
	Stella Moeketse	Read: 2012/02/20 10:59 AM

From: Victoria Tucker
Sent: 14 February 2012 02:30 PM
To: 'mmohlalisi@nwpg.gov.za'; 'smukhola@nwpg.gov.za'; 'rnemanashi@nwpg.gov.za'; 'DTMahlaku@nwpg.gov.za'; 'PMATLAPENG@nwpg.gov.za'; 'percy.matlapeng@gmail.com'; 'oskosana@nwpg.gov.za'; 'clast@nwpg.gov.za'; 'jnkosi@ruraldevelopment.gov.za'; 'JKNkosi@dla.gov.za'; 'dkmolebatsi@ruraldevelopment.gov.za'; 'kmekgoe@rustenburg.gov.za'; 'tlenake@rtbcc.co.za'; 'gomolemomoalusi@madibeng.gov.za'; 'sammkhabela@madibeng.gov.za'; 'info@rainstar.co.za'; 'lmahlangu@environment.gov.za'; 'zmbili@environment.gov.za'; 'jmarais@deat.gov.za'; 'nemutandanit@dwaf.gov.za'; 'ishmaelm@nda.agric.za'
Cc: Stella Moeketse
Subject: Tharisa Mine: EMP Amendment I- Scoping/Site Meeting Invitation

THARISA MINERALS (PTY) LTD EIA/EMP AMENDMENT I

SCOPING/ SITE MEETING INVITATION FOR:

THE PROPOSED CONSTRUCTION AND OPERATION OF THE SMELTER HOUSE AND ASSOCIATED INFRASTRUCTURE, CONSTRUCTION AND OPERATION OF THE CHROME SAND DRYING PLANT, STORAGE OF HAZARDOUS SUBSTANCES, CHANGES TO THE DESIGN AND CHARACTERISTICS OF THE TAILINGS STORAGE FACILITY AND CHANGES TO THE GENERAL LAYOUT OF THE MINE

Dear Regulatory Authorities,

As you are all aware, Tharisa Minerals (Pty) Ltd (Tharisa) is an existing chrome and platinum group metals (PGM) concentrate producing mine that is located near Marikana town in the Rustenburg and Madibeng Local Municipalities and Bojanala Platinum District Municipality in the North West Province. Tharisa proposes to construct a PGM smelter house and associated infrastructure, a chrome sand drying plant, store hazardous substances (eg. acid), store hazardous waste (eg. used acid), change the tailings dam design and characteristics and change the general surface infrastructure layout at Tharisa Mine. The proposed activities will be located at the mine, on the farms Kafferskraal 342 JQ, Rooikoppies 297 JQ and Elandsdrift 467 JQ.

Prior to the commencement of the proposed projects an environmental assessment process including: a scoping phase, environmental impact assessment (EIA) phase and an environmental management programme (EMP) amendment. SLR Consulting (Africa) (SLR), an independent firm of environmental consultants, has been appointed by Tharisa to manage the environmental assessment process.

As public involvement is an **essential** component of the environmental **assessment** process, you have been identified as the regulatory authority who may be interested in hearing more about the project and who may wish to provide input into the environmental assessment process. In this regard, please find attached a copy of the project's background information document (BID) prepared by SLR for your perusal and comments.

This letter serves to invite you to the focused scoping/ site meeting for Regulatory Authorities . The details for the meeting are provided below:

- **Date:** 21st February 2012
- **Venue:** Tharisa Mine Main Boardroom
- **Time:** 11h00

Attached please find a copy of the project's background information document (BID) prepared by SLR for your perusal and comments.

If you have any questions in this regard please contact the undersigned.

Regards

Stella Moeketse
Environmental Assessment Practitioner
SLR Consulting (Africa) (Pty) Ltd

Email: smoeketse@slrconsulting.com

Mobile: +27 72 380 5609

Tel: +27 11 467 0945

Ext: 2010

Fax: +27 11 467 0978

SLR Africa (Block 7)
Fourways Manor Office Park
2191, Cnr Roos and Macbeth Streets
Fourways, Johannesburg
South Africa, Johannesburg, 2060, South Africa

Victoria Tucker
SLR Consulting (Africa) (Pty) Ltd

Email: vtucker@slrconsulting.com

Mobile: +27 83 533 3576

Tel: +27 11 467 0945

Ext: 2007

Fax: +27 11 467 0978

SLR Africa (Block 7)
Fourways Manor Office Park
2191, Cnr Roos and Macbeth Streets
Fourways, Johannesburg
South Africa, Johannesburg, 2060, South Africa

Victoria Tucker
SLR Consulting (Africa) (Pty) Ltd

Email: vtucker@slrconsulting.com

Mobile: +27 83 533 3576
Tel: +27 11 467 0945
Ext: 2007
Fax: +27 11 467 0978

SLR Africa (Block 7)
Fourways Manor Office Park
2191, Cnr Roos and Macbeth Streets
Fourways, Johannesburg
South Africa, Johannesburg, 2060, South Africa

Stella Moeketse

From: Victoria Tucker
Sent: 19 June 2012 12:10 PM
To: sammkhabela@madibeng.gov.za; jmarais@deat.gov.za; clast@nwpg.gov.za; nemutandanit@dwaf.gov.za; hpnel@mweb.co.za; ishmaelm@nda.agric.za; niehaus@nwpg.gov.za; PMATLAPENG@nwpg.gov.za; percy.matlapeng@gmail.com; asalomon@sahra.org.za; cscheermeyer@sahra.org.za; desmond.makamu@dmr.gov.za; dkmolebatsi@ruraldevelopment.gov.za; evdyk@nwpg.gov.za; gomolemomoalusi@madibeng.gov.za; info@rainstar.co.za; jnkosi@ruraldevelopment.gov.za; JKNkosi@dla.gov.za; kmekgoe@rustenburg.gov.za; lmahlangu@environment.gov.za; matomimanaka@madibeng.gov.za; mmohlalisi@nwpg.gov.za; motlalekgomommope@madibeng.gov.za; rnemanashi@nwpg.gov.za; tlenake@rtbcc.co.za; zmbili@environment.gov.za; mphaladi@environment.gov.za
Cc: Stella Moeketse
Subject: Tharisa Minerals Scoping Report Available for Public Review
Attachments: Eng Summary 13June2012.pdf

THARISA MINERALS (PTY) LTD EIA/EMP AMENDMENT I

FOR THE PROPOSED CONSTRUCTION AND OPERATION OF THE CHROME SAND DRYING PLANT, CHANGES TO THE DESIGN OF THE TAILINGS STORAGE FACILITY AND OTHER OPERATIONAL AND SURFACE INFRASTRUCTURE CHANGES

SCOPING REPORT AND SUMMARY AVAILABLE FOR PUBLIC REVIEW

Dear Regulatory Authorities,

As you are aware, Tharisa Minerals (Pty) Ltd (Tharisa) is an existing platinum and chrome concentrate producing mine near Marikana Town in the Rustenburg Local Municipality in the North West Province. Tharisa proposes to construct and operate a chrome sand drying plant, change the design of the tailings storage facility and other operational and surface infrastructure changes at the mine. SLR Consulting (Africa) (SLR Africa) has been appointed by Tharisa to manage the environmental assessment process for the above-mentioned project components.

As part of the environmental assessment process, a scoping report has been produced by SLR Africa. The scoping report has been made available for public review. Please find attached a copy of the summary of the scoping report which includes the details of the review period as well as places where hard copies of the report are available for review. Should you wish to receive a copy of the summary in Setswana please contact SLR Africa.

If you have any questions about the proposed project and/ or the EIA process, please do not hesitate to contact the undersigned.

Kind Regards,

Stella Moeketse
Environmental Assessment Practitioner

SLR Consulting (Africa) (Pty) Ltd

Email: smoeketse@slrconsulting.com

Mobile: +27 72 380 5609

Tel: +27 11 467 0945

Ext: 2010

Fax: +27 11 467 0978

SLR Africa (Block 7)
Fourways Manor Office Park
2191, Cnr Roos and Macbeth Streets
Fourways, Johannesburg
South Africa, Johannesburg, 2060, South Africa

Victoria Tucker

SLR Consulting (Africa) (Pty) Ltd

Email: vtucker@slrconsulting.com

Mobile: +27 83 533 3576

Tel: +27 11 467 0945

Ext: 2007

Fax: +27 11 467 0978

SLR Africa (Block 7)
Fourways Manor Office Park
2191, Cnr Roos and Macbeth Streets
Fourways, Johannesburg
South Africa, Johannesburg, 2060, South Africa

Stella Moeketse

From: Victoria Tucker
Sent: 24 January 2012 10:21 AM
To: paintcentre@telkomsa.net; andries.venter@lonmin.com; jknkosi@dla.gov.za; multrader@iafrica.com; greensys@global.co.za; Engela.jansevanrensberg@bcx.co.za; pwolvaardt@xstrata.co.za; jbarnard@tiscali.co.za; jvr@sun.ac.za; johanb@bwie.co.za; jeannine@lpelaw.co.za; renthiav@hotmail.com; dvanrensburg@afrihost.co.za; greensys@global.co.za; jaco@gwisa.com; pc@gwisa.com; elandsafety@yahoo.com; sealchem@telkomsa.net; dvanrensburg@afrihost.co.za; Wilkinson_Malan@vodamail.co.za; jannie.jacobs@lonmin.net; info@benhausgroup.com; rizettem@atkv.org.za; Johnny.Pietasi@za.bosch.com; ansajoubert@yahoo.com; Pwolvaardt@xstrata.co.za; andresnr@alliedcranehire.co.za; trappersrtb@mweb.co.za; maos@gwisa.com; pjansevanrensburg@omnia.co.za; rpatton@mweb.co.za; jwesson@wessanorth.co.za; janejohn@mweb.co.za; kmarx@wessanorth.co.za; cjoubert02@amplats.co.za; eheyman@angloplat.com; jmalan@angloplat.com; andreb2@amplats.co.za; MarisaPienaar@assore.com; dave.starley@aquariussa.co.za; general@kpm.co.za; hennie@aquariussa.co.za; sandy@aquariussa.co.za; geoff@bpcc.co.za; charliem@bakwena.co.za; josephine.krzyz@implats.co.za; muna.forbang@lonplats.com; andries.venter@lonmin.com; karl.schubert@lonmin.com; natalie.kincaid-smith@lonmin.com; ecoombes@salene.com; Walter.murray@samancorcr.com; Brandon.irsigler@samancorcr.com; Heather.fleming@samancorcr.com; cnmeiring@xstrata.co.za; ndawson@xstrata.co.za; svisser@xstrata.co.za; yvstaden@xstrata.co.za; sbyleveldt@xstrata.co.za; sbuys@xstrata.co.za; sbuys@xstratacopper.cl; hermanb@ifmsa.co.za; iwatson@boyntonplatinum.com; hhattingh@eastplats.co.za; ben@hernic.co.za; mining@hernic.co.za; siju@mweb.co.za; roestok@eskom.co.za; Rejoice.makaba@eskom.co.za; bohmerw@eskom.co.za; Wendy.poulton@eskom.co.za; Bill@transnet.co.za; claudk@spoonet.co.za; Mojabatho.finger@transnet.net; Magal001@mweb.co.za; phyllisg@magalieswater.co.za; phatalal@magalieswater.co.za; bptransport@uiply.com; buks.kruger@hotworks.co.za; aaron@mekls.nwp.gov.za; mmohlalisi@nwpg.gov.za; mokomalrb@webmail.co.za; DTMahlaku@nwpg.gov.za; nemutandanit@dwaf.gov.za; ishmaelm@nda.agric.za; clast@nwpg.gov.za; jmarais@deat.gov.za; cscheermeyer@sahra.org.za; jnkosi@ruraldevelopment.gov.za; JKNkosi@dla.gov.za; dkmolebatsi@ruraldevelopment.gov.za; niehaus@nwpg.gov.za; hpnel@mweb.co.za; evdyk@nwpg.gov.za; kmekgoe@rustenburg.gov.za; tlenake@rtbcc.co.za; gomolemomoalusi@madibeng.gov.za; sammkhabela@madibeng.gov.za; info@rainstar.co.za; Elize.swart@lonmin.com; Tara.anderson@lonmin.com; Karen.chetty@lonmin.com; Hazel.fiehn@lonmin.com

Cc: Stella Moeketse; Victoria Tucker

Subject: Tharisa Minerals - Environmental Impact Assessment and Environmental Management Programme (EIA/EMP) Amendment

Attachments: BID_Tharisa_EMPAmend_Eng_20Jan2012 PDF.pdf; T014-12 Figure 1 for Bid with Amendments Layout1 (1)_Email.jpg

Tracking:

Recipient

Read

paintcentre@telkomsa.net
andries.venter@lonmin.com
jknkosi@dla.gov.za
multrader@iafrica.com
greensys@global.co.za

Recipient**Read**

Engela.jansevanrensberg@bcx.co.za
pwolvaardt@xstrata.co.za
jbarnard@tiscali.co.za
jvr@sun.ac.za
johanb@bwie.co.za
jeannine@lpelaw.co.za
renthiav@hotmail.com
dvanrensburg@afrihost.co.za
greensys@global.co.za
jaco@gwisa.com
pc@gwisa.com
elandsafety@yahoo.com
sealchem@telkomsa.net
dvanrensburg@afrihost.co.za
Wilkinson_Malan@vodamail.co.za
jannie.jacobs@lonmin.net
info@benhausgroup.com
rizettem@atkv.org.za
Johnny.Pietasi@za.bosch.com
ansajoubert@yahoo.com
Pwolvaardt@xstrata.co.za
andresnr@alliedcranehire.co.za
trappersrtb@mweb.co.za
maos@gwisa.com
pjansevanrensburg@omnia.co.za
rpatton@mweb.co.za
jwesson@wessanorth.co.za
janejohn@mweb.co.za
kmarx@wessanorth.co.za
cjoubert02@amplats.co.za
eheyman@angloplat.com
jmalan@angloplat.com
andreb2@amplats.co.za
MarisaPienaar@assore.com
dave.starley@aquariussa.co.za
general@kpmi.co.za
hennie@aquariussa.co.za
sandy@aquariussa.co.za
geoff@bpcc.co.za
charliem@bakwena.co.za
josephine.krzyz@implats.co.za
muna.forbang@lonplats.com
andries.venter@lonmin.com

Recipient**Read**

karl.schubert@lonmin.com
natalie.kincaid-smith@lonmin.com
ecoombes@salene.com
Walter.murray@samancorcr.com
Brandon.irsigler@samancorcr.com
Heather.fleming@samancorcr.com
cnmeiring@xstrata.co.za
ndawson@xstrata.co.za
svisser@xstrata.co.za
yvstaden@xstrata.co.za
sbyleveldt@xstrata.co.za
sbuys@xstrata.co.za
sbuys@xstratacopper.cl
hermanb@ifmsa.co.za
iwatson@boyntonplatinum.com
hhattingh@eastplats.co.za
ben@hernic.co.za
mining@hernic.co.za
siju@mweb.co.za
roestok@eskom.co.za
Rejoice.makaba@eskom.co.za
bohmerw@eskom.co.za
Wendy.poulton@eskom.co.za
Bill@transnet.co.za
claudk@spoonet.co.za
Mojabatho.finger@transnet.net
Magal001@mweb.co.za
phyllisg@magalieswater.co.za
phatelal@magalieswater.co.za
bptransport@uiply.com
buks.kruger@hotworks.co.za
aaron@mekls.nwp.gov.za
mmohlalisi@nwpg.gov.za
mokolalrb@webmail.co.za
DTMahlaku@nwpg.gov.za
nemutandanit@dwaf.gov.za
ishmaelm@nda.agric.za
clast@nwpg.gov.za
jmarais@deat.gov.za
cscheermeyer@sahra.org.za
jnkosi@ruraldevelopment.gov.za
JKNkosi@dla.gov.za
dkmolebatsi@ruraldevelopment.gov.za

Recipient**Read**

niehaus@nwpg.gov.za

hpnel@mweb.co.za

evdyk@nwpg.gov.za

kmekgoe@rustenburg.gov.za

tlenake@rtbcc.co.za

gomolemomoalusi@madibeng.gov.za

sammkhabela@madibeng.gov.za

info@rainstar.co.za

Elize.swart@lonmin.com

Tara.anderson@lonmin.com

Karen.chetty@lonmin.com

Hazel.fiehn@lonmin.com

Stella Moeketse

Read: 2012/01/24 11:30 AM

Victoria Tucker

Read: 2012/01/24 10:22 AM

Dear Interested and Affected Party

You and/or your organisation have been identified as an interested and/or affected party that may want to be informed about the proposed EIA/EMP amendment for Tharisa Minerals. In this regard, a background information document (BID) is attached to this e-mail.

If you would like to submit comments/questions and you would like these to be considered in the scoping process, please fax or e-mail these to SLR Consulting (Africa) (formerly known as Metago) by 24 February 2012. In addition, a public scoping meeting has been arranged for Thursday 16 February 2012, at 16h30, at the Retief Primary School Hall near Marikana.

If you have any questions in this regard please contact the undersigned.

Regards

Stella Moeketse
Environmental Assessment Practitioner
SLR Consulting (Africa) (Pty) Ltd

Email: smoeketse@slrconsulting.com

Mobile: +27 72 380 5609

Tel: +27 11 467 0945

Ext: 2010

Fax: +27 11 467 0978

SLR Africa (Block 7)
Fourways Manor Office Park
2191, Cnr Roos and Macbeth Streets
Fourways, Johannesburg
South Africa, Johannesburg, 2060, South Africa

Victoria Tucker
SLR Consulting (Africa) (Pty) Ltd

Email: vtucker@slrconsulting.com

Mobile: +27 83 533 3576

Tel: +27 11 467 0945

Ext: 2007

Fax: +27 11 467 0978

SLR Africa (Block 7)
Fourways Manor Office Park
2191, Cnr Roos and Macbeth Streets
Fourways, Johannesburg
South Africa, Johannesburg, 2060, South Africa

Stella Moeketse

From: Stella Moeketse
Sent: 01 February 2012 10:30 AM
To: rjlabuschagne@ra.rockwell.com
Cc: Victoria Tucker
Subject: FW: THARISA MINERALS (PTY) LTD. EIA/EMP AMENDMENT I. FOCUSED SCOPING MEETING
Attachments: Scoping_focussed meeting invitation_26Jan2012.pdf; BID_Tharisa_EMPAmend_Eng_20Jan2012 PDF.pdf; T014-12 Figure 1 for Bid with Amendments Layout1 (1)_Email.jpg
Importance: High

SLR Ref. No.: T014-12/ 710.20002.00012
DEA Ref. No.: 12/9/11/L675/7
DMR Ref. No.: NW30/5/5/1/2/3/1/358
DEDECT Ref. No.: NWP/EIA/50/2011

26 January 2012

**THARISA MINERALS (PTY) LTD
EIA/EMP AMENDMENT I**

FOCUSSED SCOPING MEETING FOR:

THE PROPOSED CONSTRUCTION AND OPERATION OF THE SMELTER HOUSE AND ASSOCIATED INFRASTRUCTURE, CONSTRUCTION AND OPERATION OF THE CHROME SAND DRYING PLANT, STORAGE OF HAZARDOUS SUBSTANCES, CHANGES TO THE DESIGN AND CHARACTERISTICS OF THE TAILINGS STORAGE FACILITY AND CHANGES TO THE GENERAL LAYOUT OF THE MINE

Dear Interested and affected parties (IAPs),

Tharisa Minerals (Pty) Ltd (Tharisa) is an existing chrome and platinum group metals (PGM) concentrate producing mine that is located on the farms Kafferskraal 342 JQ, Rooikoppies 297 JQ and Elandsdrift 467 JQ near Marikana town. Tharisa Mine is situated in both the Rustenburg and Madibeng Local Municipalities and in the Bojanala Platinum District Municipality in the North West Province.

Tharisa proposes to construct and operate a PGM smelter house and associated infrastructure, construct and operate a chrome sand drying plant, store hazardous substances (eg. acid), store hazardous waste (eg. used acid), change the tailings storage facility (TSF) design and characteristics and change the general surface infrastructure layout at Tharisa Mine.

Prior to the commencement of the proposed projects an environmental assessment process including: a scoping phase, environmental impact assessment (EIA) phase and an environmental management programme (EMP) amendment has to be undertaken and be approved by the regulatory authorities. SLR Consulting (Africa) (Pty) Ltd (SLR) has been appointed by Tharisa to manage the environmental assessment process for the proposed projects.

As public involvement is an essential component of the environmental assessment process, you have been identified as one of the key stakeholders that may be interested in hearing more about the project and that may wish to provide input into the environmental assessment process.

This letter serves to invite you to the focused meeting for the key stakeholders. The proposed details for the meeting are provided below.

- **Date:** 16th February 2012
- **Venue:** Retief Primary School (Hall)
- **Time:** 11h00

Please note as an alternative to the focussed meeting, there will be a general mass public meeting. The details of this meeting are provided below.

- **Date:** 16th February 2012
- **Venue:** Retief Primary School (Hall)
- **Time:** 16h30

Attached please find a copy of the project's background information document (BID) prepared by SLR for your perusal and comments.

For any further information please contact the undersigned.

Kind regards

Stella

Moeketse

*For SLR Consulting (Africa) (Pty) Ltd
E-mail: smoeketse@slrconsulting.com*

Stella Moeketse
Environmental Assessment Practitioner
SLR Consulting (Africa) (Pty) Ltd

Email: smoeketse@slrconsulting.com

Mobile: +27 72 380 5609

Tel: +27 11 467 0945

Fax: +27 11 467 0978

SLR Africa (Block 7)
Fourways Manor Office Park
2191, Cnr Roos and Macbeth Streets
Fourways, Johannesburg
South Africa, Johannesburg, 2060, South Africa



Confidentiality Notice and Disclaimer

This communication and any attachment(s) contains information which is confidential and may also be legally privileged. It is intended for the exclusive use of the recipient(s) to whom it is addressed. If you are not the intended recipient, any disclosure, copying, distribution or any action taken or omitted to be taken in reliance on it, is prohibited

and may be unlawful. If you have received this communication in error please email us by return mail and then delete the email from your system together with any copies of it. Please note that you are not permitted to print, copy, disclose or use part or all of the content in any way.

Emails and any information transmitted thereunder may be intercepted, corrupted or delayed. As a result, SLR does not accept any responsibility for any errors or omissions howsoever caused and SLR accepts no responsibility for changes made to this email or any attachment after transmission from SLR. Whilst all reasonable endeavours are taken by SLR to screen all emails for known viruses, SLR cannot guarantee that any transmission will be virus free.

Any views or opinions are solely those of the author and do not necessarily represent those of SLR Management Ltd, or any of its subsidiaries, unless specifically stated.

SLR Consulting (South Africa) (Proprietary) Limited and SLR Consulting (Africa) (Proprietary) Limited are both subsidiaries of SLR Management Ltd.
Registered Office: Unit 2 Fourways Manor Office Park, Cnr Roos and Macbeth Street, Fourways, 2055, Gauteng, South Africa

Stella Moeketse
Environmental Assessment Practitioner
SLR Consulting (Africa) (Pty) Ltd

Email: smoeketse@slrconsulting.com
Mobile: +27 72 380 5609
Tel: +27 11 467 0945
Ext: 2010
Fax: +27 11 467 0978

SLR Africa (Block 7)
Fourways Manor Office Park
2191, Cnr Roos and Macbeth Streets
Fourways, Johannesburg
South Africa, Johannesburg, 2060, South Africa

Stella Moeketse

From: Stella Moeketse
Sent: 10 February 2012 08:45 AM
To: hein.wenhold@angloamerican.com
Cc: Victoria Tucker
Subject: THARISA MINERALS (PTY) LTD. EIA/EMP AMENDMENT I. FOCUSED SCOPING MEETING
Attachments: Scoping_focussed meeting invitation_26Jan2012.pdf; BID_Tharisa_EMPAmend_Eng_20Jan2012 PDF.pdf; T014-12 Figure 1 for Bid with Amendments Layout1 (1)_Email.jpg
Importance: High

THARISA MINERALS (PTY) LTD EIA/EMP AMENDMENT I

FOCUSSED SCOPING MEETING FOR:

THE PROPOSED CONSTRUCTION AND OPERATION OF THE SMELTER HOUSE AND ASSOCIATED INFRASTRUCTURE, CONSTRUCTION AND OPERATION OF THE CHROME SAND DRYING PLANT, STORAGE OF HAZARDOUS SUBSTANCES, CHANGES TO THE DESIGN AND CHARACTERISTICS OF THE TAILINGS STORAGE FACILITY AND CHANGES TO THE GENERAL LAYOUT OF THE MINE

Dear Mr Wenhood,

Tharisa Minerals (Pty) Ltd (Tharisa) is an existing chrome and platinum group metals (PGM) concentrate producing mine that is located on the farms Kafferskraal 342 JQ, Rooikoppies 297 JQ and Elandsdrift 467 JQ near Marikana town. Tharisa Mine is situated in both the Rustenburg and Madibeng Local Municipalities and in the Bojanala Platinum District Municipality in the North West Province.

Tharisa proposes to construct and operate a PGM smelter house and associated infrastructure, construct and operate a chrome sand drying plant, store hazardous substances (eg. acid), store hazardous waste (eg. used acid), change the tailings storage facility (TSF) design and characteristics and change the general surface infrastructure layout at Tharisa Mine.

Prior to the commencement of the proposed projects an environmental assessment process including: a scoping phase, environmental impact assessment (EIA) phase and an environmental management programme (EMP) amendment has to be undertaken and be approved by the regulatory authorities. SLR Consulting (Africa) (Pty) Ltd (SLR) has been appointed by Tharisa to manage the environmental assessment process for the proposed projects.

As public involvement is an essential component of the environmental assessment process, you have been identified as one of the key stakeholders that may be interested in hearing more about the project and that may wish to provide input into the environmental assessment process.

This letter serves to invite you to the focused meeting for the key stakeholders. The proposed details for the meeting are provided below.

- **Date:** 16th February 2012
- **Venue:** Retief Primary School (Hall)
- **Time:** 11h00

Please note as an alternative to the focussed meeting, there will be a general mass public meeting. The details of this meeting are provided below.

- **Date:** 16th February 2012
- **Venue:** Retief Primary School (Hall)
- **Time:** 16h30

Attached please find a copy of the project's background information document (BID) prepared by SLR for your perusal and comments.

For any further information please contact the undersigned.

Kind regards

Stella Moeketse
Environmental Assessment Practitioner
SLR Consulting (Africa) (Pty) Ltd

Email: smoeketse@slrconsulting.com

Mobile: +27 72 380 5609

Tel: +27 11 467 0945

Ext: 2010

Fax: +27 11 467 0978

SLR Africa (Block 7)
Fourways Manor Office Park
2191, Cnr Roos and Macbeth Streets
Fourways, Johannesburg
South Africa, Johannesburg, 2060, South Africa

Stella Moeketse

From: Victoria Tucker
Sent: 13 February 2012 02:29 PM
To: 'motaunglewis25@gmail.com'
Cc: Stella Moeketse
Subject: FW: THARISA MINERALS (PTY) LTD. EIA/EMP AMENDMENT I. FOCUSED SCOPING MEETING
Attachments: Scoping_focussed meeting invitation_26Jan2012.pdf; BID_Tharisa_EMPAmend_Eng_20Jan2012 PDF.pdf; T014-12 Figure 1 for Bid with Amendments Layout1 (1)_Email.jpg
Importance: High

THARISA MINERALS (PTY) LTD EIA/EMP AMENDMENT I

FOCUSSED SCOPING MEETING FOR:

THE PROPOSED CONSTRUCTION AND OPERATION OF THE SMELTER HOUSE AND ASSOCIATED INFRASTRUCTURE, CONSTRUCTION AND OPERATION OF THE CHROME SAND DRYING PLANT, STORAGE OF HAZARDOUS SUBSTANCES, CHANGES TO THE DESIGN AND CHARACTERISTICS OF THE TAILINGS STORAGE FACILITY AND CHANGES TO THE GENERAL LAYOUT OF THE MINE

Dear Mr Wenhood,

Tharisa Minerals (Pty) Ltd (Tharisa) is an existing chrome and platinum group metals (PGM) concentrate producing mine that is located on the farms Kafferskraal 342 JQ, Rooikoppies 297 JQ and Elandsdrift 467 JQ near Marikana town. Tharisa Mine is situated in both the Rustenburg and Madibeng Local Municipalities and in the Bojanala Platinum District Municipality in the North West Province.

Tharisa proposes to construct and operate a PGM smelter house and associated infrastructure, construct and operate a chrome sand drying plant, store hazardous substances (eg. acid), store hazardous waste (eg. used acid), change the tailings storage facility (TSF) design and characteristics and change the general surface infrastructure layout at Tharisa Mine.

Prior to the commencement of the proposed projects an environmental assessment process including: a scoping phase, environmental impact assessment (EIA) phase and an environmental management programme (EMP) amendment has to be undertaken and be approved by the regulatory authorities. SLR Consulting (Africa) (Pty) Ltd (SLR) has been appointed by Tharisa to manage the environmental assessment process for the proposed projects.

As public involvement is an essential component of the environmental assessment process, you have been identified as one of the key stakeholders that may be interested in hearing more about the project and that may wish to provide input into the environmental assessment process.

This letter serves to invite you to the focused meeting for the key stakeholders. The proposed details for the meeting are provided below.

- **Date:** 16th February 2012
- **Venue:** Retief Primary School (Hall)
- **Time:** 11h00

Please note as an alternative to the focussed meeting, there will be a general mass public meeting. The details of this meeting are provided below.

- **Date:** 16th February 2012
- **Venue:** Retief Primary School (Hall)
- **Time:** 16h30

Attached please find a copy of the project's background information document (BID) prepared by SLR for your perusal and comments.

For any further information please contact the undersigned.

Kind regards

Stella Moeketse
Environmental Assessment Practitioner
SLR Consulting (Africa) (Pty) Ltd

Email: smoeketse@slrconsulting.com

Mobile: +27 72 380 5609

Tel: +27 11 467 0945

Ext: 2010

Fax: +27 11 467 0978

SLR Africa (Block 7)
Fourways Manor Office Park
2191, Cnr Roos and Macbeth Streets
Fourways, Johannesburg
South Africa, Johannesburg, 2060, South Africa

Stella Moeketse

From: Victoria Tucker
Sent: 13 February 2012 02:47 PM
To: 'motaunglucas25@gmail.com'
Cc: Stella Moeketse
Subject: THARISA MINERALS (PTY) LTD. EIA/EMP AMENDMENT I. FOCUSSED SCOPING MEETING
Attachments: Scoping_focussed meeting invitation_26Jan2012.pdf; BID_Tharisa_EMPAmend_Eng_20Jan2012 PDF.pdf; T014-12 Figure 1 for Bid with Amendments Layout1 (1)_Email.jpg
Importance: High

THARISA MINERALS (PTY) LTD EIA/EMP AMENDMENT I

FOCUSSED SCOPING MEETING FOR:

THE PROPOSED CONSTRUCTION AND OPERATION OF THE SMELTER HOUSE AND ASSOCIATED INFRASTRUCTURE, CONSTRUCTION AND OPERATION OF THE CHROME SAND DRYING PLANT, STORAGE OF HAZARDOUS SUBSTANCES, CHANGES TO THE DESIGN AND CHARACTERISTICS OF THE TAILINGS STORAGE FACILITY AND CHANGES TO THE GENERAL LAYOUT OF THE MINE

Dear Reverend Motaung,

Tharisa Minerals (Pty) Ltd (Tharisa) is an existing chrome and platinum group metals (PGM) concentrate producing mine that is located on the farms Kafferskraal 342 JQ, Rooikoppies 297 JQ and Elandsdrift 467 JQ near Marikana town. Tharisa Mine is situated in both the Rustenburg and Madibeng Local Municipalities and in the Bojanala Platinum District Municipality in the North West Province.

Tharisa proposes to construct and operate a PGM smelter house and associated infrastructure, construct and operate a chrome sand drying plant, store hazardous substances (eg. acid), store hazardous waste (eg. used acid), change the tailings storage facility (TSF) design and characteristics and change the general surface infrastructure layout at Tharisa Mine.

Prior to the commencement of the proposed projects an environmental assessment process including: a scoping phase, environmental impact assessment (EIA) phase and an environmental management programme (EMP) amendment has to be undertaken and be approved by the regulatory authorities. SLR Consulting (Africa) (Pty) Ltd (SLR) has been appointed by Tharisa to manage the environmental assessment process for the proposed projects.

As public involvement is an essential component of the environmental assessment process, you have been identified as one of the key stakeholders that may be interested in hearing more about the project and that may wish to provide input into the environmental assessment process.

This letter serves to invite you to the focused meeting for the key stakeholders. The proposed details for the meeting are provided below.

- **Date:** 16th February 2012
- **Venue:** Retief Primary School (Hall)
- **Time:** 11h00

Please note as an alternative to the focussed meeting, there will be a general mass public meeting. The details of this meeting are provided below.

- **Date:** 16th February 2012
- **Venue:** Retief Primary School (Hall)
- **Time:** 16h30

Attached please find a copy of the project's background information document (BID) prepared by SLR for your perusal and comments.

For any further information please contact the undersigned.

Kind regards

Stella Moeketse
Environmental Assessment Practitioner
SLR Consulting (Africa) (Pty) Ltd

Email: smoeketse@slrconsulting.com

Mobile: +27 72 380 5609

Tel: +27 11 467 0945

Ext: 2010

Fax: +27 11 467 0978

SLR Africa (Block 7)
Fourways Manor Office Park
2191, Cnr Roos and Macbeth Streets
Fourways, Johannesburg
South Africa, Johannesburg, 2060, South Africa

Stella Moeketse

From: Victoria Tucker
Sent: 15 February 2012 08:47 AM
To: 'cjoubert02@amplats.co.za'; 'eheyman@angloplat.com'; 'jmalan@angloplat.com'; 'andreb2@amplats.co.za'; 'MarisaPienaar@assore.com'; 'dave.starley@aquariusssa.co.za'; 'general@kpm.co.za'; 'hennie@aquariusssa.co.za'; 'sandy@aquariusssa.co.za'; 'geoff@bpcc.co.za'; 'charliem@bakwena.co.za'; 'josephine.krzyz@implats.co.za'; 'muna.forbang@lonplats.com'; 'andries.venter@lonmin.com'; 'natalie.kincaid-smith@lonmin.com'; 'Elize.swart@lonmin.com'; 'Tara.anderson@lonmin.com'; 'Karen.chetty@lonmin.com'; 'Hazel.fiehn@lonmin.com'; 'karl.schubert@lonmin.com'; 'Walter.murray@samancorcr.com'; 'Brandon.irsigler@samancorcr.com'; 'Heather.fleming@samancorcr.com'; 'cnmeiring@xstrata.co.za'; 'ndawson@xstrata.co.za'; 'svisser@xstrata.co.za'; 'yvstaden@xstrata.co.za'; 'sbyleveldt@xstrata.co.za'; 'sbuys@xstrata.co.za'; 'sbuys@xstratacopper.cl'; 'thurter@xstrata.co.za'; 'lesegor@ifmsa.co.za'; 'hermanb@ifmsa.co.za'; 'iwatson@boynntonplatinum.com'; 'hattingh@eastplats.co.za'; 'ben@hernic.co.za'; 'mining@hernic.co.za'
Cc: Stella Moeketse
Subject: THARISA MINERALS (PTY) LTD. EIA/EMP AMENDMENT I. FOCUSSED SCOPING MEETING

THARISA MINERALS (PTY) LTD EIA/EMP AMENDMENT I

FOCUSSED SCOPING MEETING FOR:

THE PROPOSED CONSTRUCTION AND OPERATION OF THE SMELTER HOUSE AND ASSOCIATED INFRASTRUCTURE, CONSTRUCTION AND OPERATION OF THE CHROME SAND DRYING PLANT, STORAGE OF HAZARDOUS SUBSTANCES, CHANGES TO THE DESIGN AND CHARACTERISTICS OF THE TAILINGS STORAGE FACILITY AND CHANGES TO THE GENERAL LAYOUT OF THE MINE

Dear Interested and Affected Parties,

Tharisa Minerals (Pty) Ltd (Tharisa) is an existing chrome and platinum group metals (PGM) concentrate producing mine that is located on the farms Kafferskraal 342 JQ, Rooikoppies 297 JQ and Elandsdrift 467 JQ near Marikana town. Tharisa Mine is situated in both the Rustenburg and Madibeng Local Municipalities and in the Bojanala Platinum District Municipality in the North West Province.

Tharisa proposes to construct and operate a PGM smelter house and associated infrastructure, construct and operate a chrome sand drying plant, store hazardous substances (eg. acid), store hazardous waste (eg. used acid), change the tailings storage facility (TSF) design and characteristics and change the general surface infrastructure layout at Tharisa Mine.

Prior to the commencement of the proposed projects an environmental assessment process including: a scoping phase, environmental impact assessment (EIA) phase and an environmental management programme (EMP) amendment has to be undertaken and be approved by the regulatory authorities. SLR Consulting (Africa) (Pty) Ltd (SLR) has been appointed by Tharisa to manage the environmental assessment process for the proposed projects.

As public involvement is an essential component of the environmental assessment process, you have been identified as one of the key stakeholders that may be interested in hearing more about the project and that may wish to provide input into the environmental assessment process.

This letter serves to invite you to the focused meeting for the key stakeholders. The proposed details for the meeting are provided below.

- **Date:** 16th February 2012
- **Venue:** Retief Primary School (Hall)
- **Time:** 11h00

Please note as an alternative to the focussed meeting, there will be a general mass public meeting. The details of this meeting are provided below.

- **Date:** 16th February 2012
- **Venue:** Retief Primary School (Hall)
- **Time:** 16h30

Attached please find a copy of the project's background information document (BID) prepared by SLR for your perusal and comments.

For any further information please contact the undersigned.

Kind regards

Stella Moeketse
Environmental Assessment Practitioner
SLR Consulting (Africa) (Pty) Ltd

Email: smoeketse@slrconsulting.com

Mobile: +27 72 380 5609

Tel: +27 11 467 0945

Ext: 2010

Fax: +27 11 467 0978

SLR Africa (Block 7)
Fourways Manor Office Park
2191, Cnr Roos and Macbeth Streets
Fourways, Johannesburg
South Africa, Johannesburg, 2060, South Africa

Stella Moeketse

From: Victoria Tucker
Sent: 20 February 2012 07:37 AM
To: dot@monkeypuzzle.co.za
Cc: Stella Moeketse
Subject: RE: BVC - Tharisa Minerals -EIA/EMP Meeting

Hi Dorothea

Thank you for the email. I will add your details to the database of this project and you will receive further IAP correspondence to your email address.

Kind regards

Victoria Tucker
SLR Consulting (Africa) (Pty) Ltd

Email: vtucker@slrconsulting.com
Mobile: +27 83 533 3576
Tel: +27 11 467 0945
Ext: 2007
Fax: +27 11 467 0978

SLR Africa (Block 7)
Fourways Manor Office Park
2191, Cnr Roos and Macbeth Streets
Fourways, Johannesburg
South Africa, Johannesburg, 2060, South Africa

From: dorothea zeffertt [<mailto:dot@monkeypuzzle.co.za>]
Sent: 19 February 2012 11:53 AM
To: Victoria Tucker
Subject: FW: BVC - Tharisa Minerals -EIA/EMP Meeting

Hi Victoria,
I/We are registered with you as I&AP. Can I please be mailed directly with any information? I cannot attend meetings at short notice & delays in forwarding mail are often unavoidable.
Thank you
Dorothea Zeffertt
Mother Goose Prop Inv cc
Cell: 0798677574

From: Lorraine [<mailto:PottersReach@mweb.co.za>]
Sent: 15 February 2012 09:00
To: At v R; Chris Wenhold; dorothea zeffertt; Harry & Rita Schubert; Hermien v S; Jan v R; joan v M; Johan Potgieter; Judith Oppler; Lorna Putterill; margie owen-smith; Noel & Viv Pope; Oliver Oppler; Otti Nesor; Richard P; 'Stuart Vaughan'
Subject: BVC - Tharisa Minerals -EIA/EMP Meeting

From: Victoria Tucker [<mailto:vtucker@slrconsulting.com>]
Sent: 24 January 2012 10:21 AM

Subject: Tharisa Minerals - Environmental Impact Assessment and Environmental Management Programme (EIA/EMP) Amendment

Dear Interested and Affected Party

You and/or your organisation have been identified as an interested and/or affected party that may want to be informed about the proposed EIA/EMP amendment for Tharisa Minerals. In this regard, a background information document (BID) is attached to this e-mail.

If you would like to submit comments/questions and you would like these to be considered in the scoping process, please fax or e-mail these to SLR Consulting (Africa) (formerly known as Metago) by 24 February 2012. In addition, a public scoping meeting has been arranged for **Thursday 16 February 2012, at 16h30**, at the Retief Primary School Hall near Marikana.

If you have any questions in this regard please contact the undersigned.

Regards

Stella Moeketse
Environmental Assessment Practitioner
SLR Consulting (Africa) (Pty) Ltd

Email: smoeketse@slrconsulting.com
Mobile: +27 72 380 5609
Tel: +27 11 467 0945
Ext: 2010
Fax: +27 11 467 0978

SLR Africa (Block 7)
Fourways Manor Office Park
2191, Cnr Roos and Macbeth Streets
Fourways, Johannesburg
South Africa, Johannesburg, 2060, South Africa

Victoria Tucker
SLR Consulting (Africa) (Pty) Ltd

Email: vtucker@slrconsulting.com
Mobile: +27 83 533 3576
Tel: +27 11 467 0945
Fax: +27 11 467 0978

SLR Africa (Block 7)
Fourways Manor Office Park
2191, Cnr Roos and Macbeth Streets
Fourways, Johannesburg
South Africa, Johannesburg, 2060, South Africa



Confidentiality Notice and Disclaimer

This communication and any attachment(s) contains information which is confidential and may also be legally privileged. It is intended for the exclusive use of the recipient(s) to whom it is addressed. If you are not the intended recipient, any disclosure, copying, distribution or any action taken or omitted to be taken in reliance on it, is prohibited and may be unlawful. If you have received this communication in error please email us by return mail and then delete the email from your system together with any copies of it. Please note that you are not permitted to print, copy, disclose or use part or all of the content in any way.

Emails and any information transmitted thereunder may be intercepted, corrupted or delayed. As a result, SLR does not accept any responsibility for any errors or omissions howsoever caused and SLR accepts no responsibility for changes made to this email or any attachment after transmission from SLR. Whilst all reasonable endeavours are taken by SLR to screen all emails for known viruses, SLR cannot guarantee that any transmission will be virus free.

Any views or opinions are solely those of the author and do not necessarily represent those of SLR Management Ltd, or any of its subsidiaries, unless specifically stated.

SLR Consulting (South Africa) (Proprietary) Limited and SLR Consulting (Africa) (Proprietary) Limited are both subsidiaries of SLR Management Ltd.

Registered Office: Unit 2 Fourways Manor Office Park, Cnr Roos and Macbeth Street, Fourways, 2055, Gauteng, South Africa

Stella Moeketse

From: Victoria Tucker
Sent: 15 February 2012 02:33 PM
To: thurter@xstrata.co.za
Subject: RE: THARISA MINERALS (PTY) LTD. EIA/EMP AMENDMENT I. FOCUSSED SCOPING MEETING
Attachments: BID_Tharisa_EMPAmend_Eng_20Jan2012 PDF.PDF; T014-12 Figure 1 for Bid with Amendments Layout1 (1)_Email.jpg

Good day Mr Hunter

Apologies – the BID is attached for your review.

Kind regards

From: THurter@xstrata.co.za [mailto:THurter@xstrata.co.za]
Sent: 15 February 2012 02:24 PM
To: Victoria Tucker
Subject: RE: THARISA MINERALS (PTY) LTD. EIA/EMP AMENDMENT I. FOCUSSED SCOPING MEETING

Good day

I will not be able to the meetings tomorrow. Please forward the BID as it is not attached to the email as stated?

Regards

Tommie Hurter
*Group Manager: Environment
Xstrata Alloys*

*Telephone: +27 14 590 2406
Fax: +27 86 557 2497
Mobile: +83 324 5370*

*Email: thurter@xstrata.co.za
www.xstrataalloys.com*

From: Victoria Tucker [mailto:vtucker@slrconsulting.com]
Sent: 15 February 2012 08:47 AM
To: IAP - Joubert, Christo; ehemann@angloplat.com; j malan; andreb2@amplats.co.za; MarisaPienaar@assore.com; dave.starley@aquariususa.co.za; general@kpm.co.za; hennie@aquariususa.co.za; sandy@aquariususa.co.za; geoff@bpcc.co.za; charliem@bakwena.co.za; josephine.krzyz@implats.co.za; muna.forbang@lonplats.com; andries.venter@lonmin.com; natalie.kincaid-smith@lonmin.com; Elize.swart@lonmin.com; Tara.anderson@lonmin.com; Karen.chetty@lonmin.com; Hazel.fiehn@lonmin.com; karl.schubert@lonmin.com; Walter.murray@samancorcr.com; Brandon.irsigler@samancorcr.com; Heather.fleming@samancorcr.com; cnmeiring@xstrata.co.za; Dawson, Nic (Divisional HQ - Alloys); Visser, Susan (Divisional HQ - Alloys); Van Staden, Yolanda (Divisional HQ - Alloys); Byleveldt, Sybrandt (Waterval - Alloys); sbuys@xstrata.co.za; sbuys@xstratacopper.cl; Hurter, Tommie (Rustenburg Shared Services - Alloys); lesegor@ifmsa.co.za; hermanb@ifmsa.co.za; iwatson@boyntonplatinum.com; hatingh@eastplats.co.za; IAP - Hefer, Ben; mining@hernic.co.za
Cc: Stella Moeketse
Subject: THARISA MINERALS (PTY) LTD. EIA/EMP AMENDMENT I. FOCUSSED SCOPING MEETING

**THARISA MINERALS (PTY) LTD
EIA/EMP AMENDMENT I**

**FOCUSSED SCOPING MEETING FOR:
THE PROPOSED CONSTRUCTION AND OPERATION OF THE SMELTER HOUSE AND ASSOCIATED
INFRASTRUCTURE, CONSTRUCTION AND OPERATION OF THE CHROME SAND DRYING PLANT,
STORAGE OF HAZARDOUS SUBSTANCES, CHANGES TO THE DESIGN AND CHARACTERISTICS OF
THE TAILINGS STORAGE FACILITY AND CHANGES TO THE GENERAL LAYOUT OF THE MINE**

Dear Interested and Affected Parties,

Tharisa Minerals (Pty) Ltd (Tharisa) is an existing chrome and platinum group metals (PGM) concentrate producing mine that is located on the farms Kafferskraal 342 JQ, Rooikoppies 297 JQ and Elandsdrift 467 JQ near Marikana town. Tharisa Mine is situated in both the Rustenburg and Madibeng Local Municipalities and in the Bojanala Platinum District Municipality in the North West Province.

Tharisa proposes to construct and operate a PGM smelter house and associated infrastructure, construct and operate a chrome sand drying plant, store hazardous substances (eg. acid), store hazardous waste (eg. used acid), change the tailings storage facility (TSF) design and characteristics and change the general surface infrastructure layout at Tharisa Mine.

Prior to the commencement of the proposed projects an environmental assessment process including: a scoping phase, environmental impact assessment (EIA) phase and an environmental management programme (EMP) amendment has to be undertaken and be approved by the regulatory authorities. SLR Consulting (Africa) (Pty) Ltd (SLR) has been appointed by Tharisa to manage the environmental assessment process for the proposed projects.

As public involvement is an essential component of the environmental assessment process, you have been identified as one of the key stakeholders that may be interested in hearing more about the project and that may wish to provide input into the environmental assessment process.

This letter serves to invite you to the focused meeting for the key stakeholders. The proposed details for the meeting are provided below.

- **Date:** 16th February 2012
- **Venue:** Retief Primary School (Hall)
- **Time:** 11h00

Please note as an alternative to the focussed meeting, there will be a general mass public meeting. The details of this meeting are provided below.

- **Date:** 16th February 2012
- **Venue:** Retief Primary School (Hall)
- **Time:** 16h30

Attached please find a copy of the project's background information document (BID) prepared by SLR for your perusal and comments.

For any further information please contact the undersigned.

Kind regards

Stella Moeketse
Environmental Assessment Practitioner
SLR Consulting (Africa) (Pty) Ltd

Email: smoeketse@slrconsulting.com

Mobile: +27 72 380 5609

Tel: +27 11 467 0945
Ext: 2010
Fax: +27 11 467 0978

SLR Africa (Block 7)
Fourways Manor Office Park
2191, Cnr Roos and Macbeth Streets
Fourways, Johannesburg
South Africa, Johannesburg, 2060, South Africa

Victoria Tucker
SLR Consulting (Africa) (Pty) Ltd

Email: vtucker@slrconsulting.com
Mobile: +27 83 533 3576
Tel: +27 11 467 0945
Fax: +27 11 467 0978

SLR Africa (Block 7)
Fourways Manor Office Park
2191, Cnr Roos and Macbeth Streets
Fourways, Johannesburg
South Africa, Johannesburg, 2060, South Africa



Confidentiality Notice and Disclaimer

This communication and any attachment(s) contains information which is confidential and may also be legally privileged. It is intended for the exclusive use of the recipient(s) to whom it is addressed. If you are not the intended recipient, any disclosure, copying, distribution or any action taken or omitted to be taken in reliance on it, is prohibited and may be unlawful. If you have received this communication in error please email us by return mail and then delete the email from your system together with any copies of it. Please note that you are not permitted to print, copy, disclose or use part or all of the content in any way.

Emails and any information transmitted thereunder may be intercepted, corrupted or delayed. As a result, SLR does not accept any responsibility for any errors or omissions howsoever caused and SLR accepts no responsibility for changes made to this email or any attachment after transmission from SLR. Whilst all reasonable endeavours are taken by SLR to screen all emails for known viruses, SLR cannot guarantee that any transmission will be virus free.

Any views or opinions are solely those of the author and do not necessarily represent those of SLR Management Ltd, or any of its subsidiaries, unless specifically stated.

SLR Consulting (South Africa) (Proprietary) Limited and SLR Consulting (Africa) (Proprietary) Limited are both subsidiaries of SLR Management Ltd.
Registered Office: Unit 2 Fourways Manor Office Park, Cnr Roos and Macbeth Street, Fourways, 2055, Gauteng, South Africa

DISCLAIMER:...

This e-mail and its contents are subject to the Xstrata South Africa (Pty) Ltd e-mail legal notice available from legal@xstrata.co.za or the network administrator of Xstrata Alloys.

Xstrata South Africa (Pty) Ltd Reg. No. 1997/017998/07 3rd Floor, 23 Melrose Boulevard, Melrose Arch, Johannesburg 2196 South Africa

Directors: P J Nienaber (Chairman) RSE Alberts W Barrett GJ Dreyer MJ Houston HA Rossouw BD Moolman A H Sangqu CL Smit

Stella Moeketse

From: Victoria Tucker
Sent: 21 February 2012 07:53 AM
To: 'marius.botha@remig.co.za'
Cc: Stella Moeketse
Subject: FW: Tharisa EMP Amendment I: Scoping Presentation
Attachments: Scoping_Public_Presentation_16Feb12.pdf

Tracking:	Recipient	Delivery	Read
	'marius.botha@remig.co.za'		
	Stella Moeketse	Delivered: 2012/02/21 07:53 AM	Read: 2012/02/21 08:30 AM

Hi Marius,

Attached please find a copy of the presentation as per your request for your review and comments.

Many thanks.

Kind regards

Stella Moeketse
Environmental Assessment Practitioner
SLR Consulting (Africa) (Pty) Ltd

Email: smoeketse@slrconsulting.com

Mobile: +27 72 380 5609

Tel: +27 11 467 0945

Ext: 2010

Fax: +27 11 467 0978

SLR Africa (Block 7)
Fourways Manor Office Park
2191, Cnr Roos and Macbeth Streets
Fourways, Johannesburg
South Africa, Johannesburg, 2060, South Africa

Stella Moeketse

From: Victoria Tucker
Sent: 20 June 2012 01:23 PM
To: francesrahlapane@transnet.net
Subject: FW: Tharisa Minerals Scoping Report Available for Public Review
Attachments: Eng Summary 13June2012.pdf

From: Victoria Tucker

Sent: 19 June 2012 12:08 PM

To: paintcentre@telkomsa.net; citymall1@yahoo.com; andries.venter@lonmin.com; jknkosi@dla.gov.za; jbarnard@tiscali.co.za; pwolvaardt@xstrata.co.za; jvr@sun.ac.za; johanb@bwie.co.za; multrader@iafrica.com; greensys@global.co.za; rlabuschagne@ra.rockwell.com; hhenning99@ovi.com; Engela.jansevanrensberg@bcx.co.za; renthiav@hotmail.com; dvanrensburg@afrihost.co.za; info@adj.co.za; mornaysport@gmail.com; motaunglucas25@gmail.com; pc@gwisa.com; jaco@gwisa.com; elandsafety@yahoo.com; dbjansen@vodamail.co.za; sealchem@telkomsa.net; morikoneng@telkomsa.net; jschoeman@xstrata.co.za; Wilkinson_Malan@vodamail.co.za; jannie.jacobs@lonmin.net; eulanda.jacobs@gmail.com; maritaprelec@netactive.co.za; vorsterwillem@gmail.com; rethian@hotmail.com; ekhohler@absa.co.za; willem@svsboerdery.co.za; schalla@svsboerdery.co.za; jonnysannette@gmail.com; mwvengalo@mweb.co.za; janc@absamail.co.za; goush@mweb.co.za; barendclark@gmail.com; admin@f3society.co.za; aletspe@yahoo.co.uk; eben.jubilieus@lonmin.com; rizettem@atkv.org.za; hettie.l@gwisa.com; Johnny.Pietasi@za.bosch.com; ansajoubert@yahoo.com; steafan_smith214@gmail.com; Pwolvaardt@xstrata.co.za; environment@vodamail.co.za; andresnr@alliedcranehire.co.za; dot@monkeypuzzle.co.za; maritzja@mweb.co.za; trappersrtb@mweb.co.za; maos@gwisa.com; pjansevanrensburg@omnia.co.za; rpatton@mweb.co.za; jwesson@wessanorth.co.za; janejohn@mweb.co.za; kmarx@wessanorth.co.za; cjoubert02@amplats.co.za; eheyman@angloplat.com; jmalan@angloplat.com; andreb2@amplats.co.za; MarisaPienaar@assore.com; dave.starley@aquariussa.co.za; general@kpm.co.za; geoff@bpcc.co.za; charliem@bakwena.co.za; josephine.krzyz@implats.co.za; Elize.swart@lonmin.com; Tara.anderson@lonmin.com; Karen.chetty@lonmin.com; Hazel.fiehn@lonmin.com; ecoombes@salene.com; lesegor@ifmsa.co.za; Walter.murray@samancorcr.com; Bill@transnet.co.za; claudk@spoonet.co.za; ben@hernic.co.za; chris@remig.co.za; sbuys@xstratacopper.cl; yvstaden@xstrata.co.za; svisser@xstrata.co.za; Magal001@mweb.co.za; phyllisg@magalieswater.co.za; phatelal@magalieswater.co.za; thurter@xstrata.co.za; elsa@remig.co.za; freddie.geldenhuys@murrob.com; bohmerw@eskom.co.za; bptransport@uiplay.com; bptransport@uiplay.com; buks.kruger@hotworks.co.za; Heather.fleming@samancorcr.com; hermanb@ifmsa.co.za; hhattingh@eastplats.co.za; Mojabatho.finger@transnet.net; ndawson@xstrata.co.za; Rejoice.makaba@eskom.co.za; roestok@eskom.co.za; sbyleveldt@xstrata.co.za; siju@mweb.co.za; Wendy.poulton@eskom.co.za

Cc: Stella Moeketse

Subject: Tharisa Minerals Scoping Report Available for Public Review

THARISA MINERALS (PTY) LTD

EIA/EMP AMENDMENT I

FOR THE PROPOSED CONSTRUCTION AND OPERATION OF THE CHROME SAND DRYING PLANT, CHANGES TO THE DESIGN OF THE TAILINGS STORAGE FACILITY AND OTHER OPERATIONAL AND SURFACE INFRASTRUCTURE CHANGES

SCOPING REPORT AND SUMMARY AVAILABLE FOR PUBLIC REVIEW

Dear Interested and/or Affected Parties (IAPs),

As you are aware, Tharisa Minerals (Pty) Ltd (Tharisa) is an existing platinum and chrome concentrate producing mine near Marikana Town in the Rustenburg Local Municipality in the North West Province. Tharisa proposes to construct and operate a chrome sand drying plant, change the design of the tailings storage facility and other

operational and surface infrastructure changes at the mine. SLR Consulting (Africa) (SLR Africa) has been appointed by Tharisa to manage the environmental assessment process for the above-mentioned project components.

As part of the environmental assessment process, a scoping report has been produced by SLR Africa. The scoping report has been made available for public review. Please find attached a copy of the summary of the scoping report which includes the details of the review period as well as places where hard copies of the report are available for review. Should you wish to receive a copy of the summary in Setswana please contact SLR Africa.

If you have any questions about the proposed project and/ or the EIA process, please do not hesitate to contact the undersigned.

Kind Regards,

Stella Moeketse
Environmental Assessment Practitioner
SLR Consulting (Africa) (Pty) Ltd

Email: smoeketse@slrconsulting.com

Mobile: +27 72 380 5609

Tel: +27 11 467 0945

Ext: 2010

Fax: +27 11 467 0978

SLR Africa (Block 7)
Fourways Manor Office Park
2191, Cnr Roos and Macbeth Streets
Fourways, Johannesburg
South Africa, Johannesburg, 2060, South Africa

Victoria Tucker
SLR Consulting (Africa) (Pty) Ltd

Email: vtucker@slrconsulting.com

Mobile: +27 83 533 3576

Tel: +27 11 467 0945

Ext: 2007

Fax: +27 11 467 0978

SLR Africa (Block 7)
Fourways Manor Office Park
2191, Cnr Roos and Macbeth Streets
Fourways, Johannesburg
South Africa, Johannesburg, 2060, South Africa

Victoria Tucker
SLR Consulting (Africa) (Pty) Ltd

Email: vtucker@slrconsulting.com

Mobile: +27 83 533 3576

Tel: +27 11 467 0945

Fax: +27 11 467 0978

SLR Africa (Block 7)
Fourways Manor Office Park
2191, Cnr Roos and Macbeth Streets
Fourways, Johannesburg
South Africa, Johannesburg, 2060, South Africa



Confidentiality Notice and Disclaimer

This communication and any attachment(s) contains information which is **confidential** and may also be legally privileged. It is intended for the exclusive use of the recipient(s) to whom it is addressed. If you are not the intended recipient, any disclosure, copying, distribution or any action taken or omitted to be taken in reliance on it, is prohibited and may be unlawful. If you have received this communication in error please email us by return mail and then delete the email from your system together with any copies of it. Please note that you are not permitted to print, copy, disclose or use part or all of the content in any way.

Emails and any information transmitted thereunder may be intercepted, corrupted or delayed. As a result, SLR does not accept any responsibility for any errors or omissions howsoever caused and SLR accepts no responsibility for changes made to this email or any attachment after transmission from SLR. Whilst all reasonable endeavours are taken by SLR to screen all emails for known viruses, SLR cannot guarantee that any transmission will be virus free.

Any views or opinions are solely those of the author and do not necessarily represent those of SLR Management Ltd, or any of its subsidiaries, unless specifically stated.

SLR Consulting (South Africa) (Proprietary) Limited and SLR Consulting (Africa) (Proprietary) Limited are both subsidiaries of SLR Management Ltd.

Registered Office: Unit 2 Fourways Manor Office Park, Cnr Roos and Macbeth Street, Fourways, 2055, Gauteng, South Africa

Stella Moeketse

From: Victoria Tucker
Sent: 20 June 2012 01:25 PM
To: geoffd@bpcc.co.za
Subject: FW: Tharisa Minerals Scoping Report Available for Public Review
Attachments: Eng Summary 13June2012.pdf

From: Victoria Tucker

Sent: 19 June 2012 12:08 PM

To: paintcentre@telkomsa.net; citymall1@yahoo.com; andries.venter@lonmin.com; jknkosi@dla.gov.za; jbarnard@tiscali.co.za; pwolvaardt@xstrata.co.za; jvr@sun.ac.za; johanb@bwie.co.za; multrader@iafrica.com; greensys@global.co.za; rjlabuschagne@ra.rockwell.com; hhenning99@ovi.com; Engela.jansevanrensberg@bcx.co.za; renthiav@hotmail.com; dvanrensburg@afrihost.co.za; info@adj.co.za; mornaysport@gmail.com; motaunglucas25@gmail.com; pc@gwisa.com; jaco@gwisa.com; elandsafety@yahoo.com; dbjansen@vodamail.co.za; sealchem@telkomsa.net; morikoneng@telkomsa.net; jschoeman@xstrata.co.za; Wilkinson_Malan@vodamail.co.za; jannie.jacobs@lonmin.net; eulanda.jacobs@gmail.com; maritaprelec@netactive.co.za; vorsterwillem@gmail.com; rethian@hotmail.com; ekhohler@absa.co.za; willem@svsboerdery.co.za; schalla@svsboerdery.co.za; jonnysannette@gmail.com; mwvengalo@mweb.co.za; janc@absamail.co.za; goush@mweb.co.za; barendclark@gmail.com; admin@f3society.co.za; aletspe@yahoo.co.uk; eben.jubilieus@lonmin.com; rizettem@atkv.org.za; hettie.l@gwisa.com; Johnny.Pietasi@za.bosch.com; ansajoubert@yahoo.com; steafan_smith214@gmail.com; Pwolvaardt@xstrata.co.za; environment@vodamail.co.za; andresnr@alliedcranehire.co.za; dot@monkeypuzzle.co.za; maritzja@mweb.co.za; trappersrtb@mweb.co.za; maos@gwisa.com; pjansevanrensburg@omnia.co.za; rpatton@mweb.co.za; jwesson@wessanorth.co.za; janejohn@mweb.co.za; kmarx@wessanorth.co.za; cjoubert02@amplats.co.za; eheymann@angloplat.com; jmalan@angloplat.com; andreb2@amplats.co.za; MarisaPienaar@assore.com; dave.starley@aquariussa.co.za; general@kpm.co.za; geoff@bpcc.co.za; charliem@bakwena.co.za; josephine.krzyz@implats.co.za; Elize.swart@lonmin.com; Tara.anderson@lonmin.com; Karen.chetty@lonmin.com; Hazel.fiehn@lonmin.com; ecoombes@salene.com; lesegor@ifmsa.co.za; Walter.murray@samancorcr.com; Bill@transnet.co.za; claudk@spoonet.co.za; ben@hernic.co.za; chris@remig.co.za; sbuys@xstratacopper.cl; yvstaden@xstrata.co.za; svisser@xstrata.co.za; Magal001@mweb.co.za; phyllisg@magalieswater.co.za; phatelal@magalieswater.co.za; thurter@xstrata.co.za; elsa@remig.co.za; freddie.geldenhuys@murrob.com; bohmerw@eskom.co.za; bptransport@uiplay.com; bptransport@uiplay.com; buks.kruger@hotworks.co.za; Heather.fleming@samancorcr.com; hermanb@ifmsa.co.za; hhattingh@eastplats.co.za; Mojabatho.finger@transnet.net; ndawson@xstrata.co.za; Rejoice.makaba@eskom.co.za; roestok@eskom.co.za; sbyleveldt@xstrata.co.za; siju@mweb.co.za; Wendy.poulton@eskom.co.za

Cc: Stella Moeketse

Subject: Tharisa Minerals Scoping Report Available for Public Review

THARISA MINERALS (PTY) LTD

EIA/EMP AMENDMENT I

FOR THE PROPOSED CONSTRUCTION AND OPERATION OF THE CHROME SAND DRYING PLANT, CHANGES TO THE DESIGN OF THE TAILINGS STORAGE FACILITY AND OTHER OPERATIONAL AND SURFACE INFRASTRUCTURE CHANGES

SCOPING REPORT AND SUMMARY AVAILABLE FOR PUBLIC REVIEW

Dear Interested and/or Affected Parties (IAPs),

As you are aware, Tharisa Minerals (Pty) Ltd (Tharisa) is an existing platinum and chrome concentrate producing mine near Marikana Town in the Rustenburg Local Municipality in the North West Province. Tharisa proposes to construct and operate a chrome sand drying plant, change the design of the tailings storage facility and other operational and surface infrastructure changes at the mine. SLR Consulting (Africa) (SLR Africa) has been appointed by Tharisa to manage the environmental assessment process for the above-mentioned project components.

As part of the environmental assessment process, a scoping report has been produced by SLR Africa. The scoping report has been made available for public review. Please find attached a copy of the summary of the scoping report which includes the details of the review period as well as places where hard copies of the report are available for review. Should you wish to receive a copy of the summary in Setswana please contact SLR Africa.

If you have any questions about the proposed project and/ or the EIA process, please do not hesitate to contact the undersigned.

Kind Regards,

Stella Moeketse
Environmental Assessment Practitioner
SLR Consulting (Africa) (Pty) Ltd

Email: smoeketse@slrconsulting.com

Mobile: +27 72 380 5609

Tel: +27 11 467 0945

Ext: 2010

Fax: +27 11 467 0978

SLR Africa (Block 7)
Fourways Manor Office Park
2191, Cnr Roos and Macbeth Streets
Fourways, Johannesburg
South Africa, Johannesburg, 2060, South Africa

Victoria Tucker
SLR Consulting (Africa) (Pty) Ltd

Email: vtucker@slrconsulting.com

Mobile: +27 83 533 3576

Tel: +27 11 467 0945

Ext: 2007

Fax: +27 11 467 0978

SLR Africa (Block 7)
Fourways Manor Office Park
2191, Cnr Roos and Macbeth Streets
Fourways, Johannesburg
South Africa, Johannesburg, 2060, South Africa

Victoria Tucker
SLR Consulting (Africa) (Pty) Ltd

Email: vtucker@slrconsulting.com

Mobile: +27 83 533 3576

Tel: +27 11 467 0945

Fax: +27 11 467 0978

SLR Africa (Block 7)
Fourways Manor Office Park
2191, Cnr Roos and Macbeth Streets
Fourways, Johannesburg
South Africa, Johannesburg, 2060, South Africa



Confidentiality Notice and Disclaimer

This communication and any attachment(s) contains information which is confidential and may also be legally privileged. It is intended for the exclusive use of the recipient(s) to whom it is addressed. If you are not the intended recipient, any disclosure, copying, distribution or any action taken or omitted to be taken in reliance on it, is prohibited and may be unlawful. If you have received this communication in error please email us by return mail and then delete the email from your system together with any copies of it. Please note that you are not permitted to print, copy, disclose or use part or all of the content in any way.

Emails and any information transmitted thereunder may be intercepted, corrupted or delayed. As a result, SLR does not accept any responsibility for any errors or omissions howsoever caused and SLR accepts no responsibility for changes made to this email or any attachment after transmission from SLR. Whilst all reasonable endeavours are taken by SLR to screen all emails for known viruses, SLR cannot guarantee that any transmission will be virus free.

Any views or opinions are solely those of the author and do not necessarily represent those of SLR Management Ltd, or any of its subsidiaries, unless specifically stated.

SLR Consulting (South Africa) (Proprietary) Limited and SLR Consulting (Africa) (Proprietary) Limited are both subsidiaries of SLR Management Ltd.

Registered Office: Unit 2 Fourways Manor Office Park, Cnr Roos and Macbeth Street, Fourways, 2055, Gauteng, South Africa

Stella Moeketse

From: Victoria Tucker
Sent: 10 July 2012 07:46 AM
To: 'Engela'
Subject: RE: FW: Tharisa Minerals Scoping Report Available for Public Review

Hi Engela

Thank you for confirming.

Please don't hesitate to contact myself or Ms Stella Moeketse if you have any further queries.

Kind regards

From: Engela [<mailto:engela50@gmail.com>]
Sent: 01 July 2012 08:18 PM
To: Victoria Tucker
Subject: RE: FW: Tharisa Minerals Scoping Report Available for Public Review

Victoria,
I received the CD, thanx very much!
Engela

From: Victoria Tucker [<mailto:vtucker@slrconsulting.com>]
Sent: 21 June 2012 08:17 AM
To: Engela Janse van Rensburg
Subject: RE: FW: Tharisa Minerals Scoping Report Available for Public Review

Hi Engela

Just to confirm – your CD made it safely to Postnet yesterday afternoon.

Kind regards

From: Engela Janse van Rensburg [<mailto:engela50@gmail.com>]
Sent: 20 June 2012 03:54 PM
To: Victoria Tucker
Subject: Re: FW: Tharisa Minerals Scoping Report Available for Public Review

Will do thanx!

Kind Regards,
Engela Janse van Rensburg
mobile +27 (0)83 445 2072
"Reach down and lift others up - it is the best exercise you can get"

On Wed, Jun 20, 2012 at 2:39 PM, Victoria Tucker <vtucker@slrconsulting.com> wrote:

Hi Engela

I will drop the CD off at the post office today and it should get to you within a week. Could you please let me know when you receive it?

Kind regards

From: Engela Janse van Rensburg [mailto:engela50@gmail.com]
Sent: 20 June 2012 02:31 PM
To: Victoria Tucker
Subject: Re: FW: Tharisa Minerals Scoping Report Available for Public Review

OK, then best is to post it to Engela Janse van Rensburg, WaterkloofVallei, 14 Squirrel street, Monument Park, 0181

Kind Regards,
Engela Janse van Rensburg
mobile [+27 \(0\)83 445 2072](tel:+27(0)834452072)

"Reach down and lift others up - it is the best exercise you can get"

On Wed, Jun 20, 2012 at 2:11 PM, Victoria Tucker <vtucker@slrconsulting.com> wrote:

Hi Engela

I can post it to your address if that would be better? Alternatively I can ask my project manager (Stella Moeketse) to speak to Thulani.

Kind regards

From: Engela Janse van Rensburg [mailto:engela50@gmail.com]
Sent: 20 June 2012 02:08 PM
To: Victoria Tucker
Subject: Re: FW: Tharisa Minerals Scoping Report Available for Public Review

OK - maybe a CD will be best if someone can bring it to Pretoria sometime. THEN I can arrange to pick it up somewhere ? Maybe with Thulani ?

Kind Regards,
Engela Janse van Rensburg
mobile [+27 \(0\)83 445 2072](tel:+27(0)834452072)

"Reach down and lift others up - it is the best exercise you can get"

On Wed, Jun 20, 2012 at 1:42 PM, Victoria Tucker <vtucker@slrconsulting.com> wrote:

Hi Engela

We are able to send a CD via the post, or I can try to load the document onto TransferBigFiles.com if you have the bandwidth to download it?

Kind regards

From: Engela Janse van Rensburg [mailto:engela50@gmail.com]
Sent: 20 June 2012 01:39 PM
To: Victoria Tucker
Subject: Re: FW: Tharisa Minerals Scoping Report Available for Public Review

Victoria,

Email received thank you.

Thanx for the attached summery document. Will you please send me the web link to the full report as well ?

Kind Regards,
Engela Janse van Rensburg
mobile [+27 \(0\)83 445 2072](tel:+270834452072)

"Reach down and lift others up - it is the best exercise you can get"

On Wed, Jun 20, 2012 at 1:20 PM, Victoria Tucker <vtucker@slrconsulting.com> wrote:

Victoria Tucker

SLR Consulting (Africa) (Pty) Ltd

Email: vtucker@slrconsulting.com

Mobile: [+27 83 533 3576](tel:+27835333576)

Tel: [+27 11 467 0945](tel:+27114670945)

Fax: [+27 11 467 0978](tel:+27114670978)

SLR Africa (Block 7)
Fourways Manor Office Park
2191, Cnr Roos and Macbeth Streets
Fourways, Johannesburg
South Africa, Johannesburg, 2060, South Africa

Confidentiality Notice and Disclaimer

This communication and any attachment(s) contains information which is confidential and may also be legally privileged. It is intended for the exclusive use of the recipient(s) to whom it is addressed. If you are not the intended recipient, any disclosure, copying, distribution or any action taken or omitted to be taken in reliance on it, is prohibited and may be unlawful. If you have received this communication in error please email us by return mail and then delete the email from your system together with any copies of it. Please note that you are not permitted to print, copy, disclose or use part or all of the content in any way.

Emails and any information transmitted thereunder may be intercepted, corrupted or delayed. As a result, SLR does not accept any responsibility for any errors or omissions howsoever caused and SLR accepts no responsibility for changes made to this email or any attachment after transmission from SLR. Whilst all reasonable endeavours are taken by SLR to screen all emails for known viruses, SLR cannot guarantee that any transmission will be virus free.

Any views or opinions are solely those of the author and do not necessarily represent those of SLR Management Ltd, or any of its subsidiaries, unless specifically stated.

SLR Consulting (South Africa) (Proprietary) Limited and SLR Consulting (Africa) (Proprietary) Limited are both subsidiaries of SLR Management Ltd.
Registered Office: Unit 2 Fourways Manor Office Park, Cnr Roos and Macbeth Street, Fourways, 2055, Gauteng, South Africa

From: Victoria Tucker

Sent: 19 June 2012 12:08 PM

To: paintcentre@telkomsa.net; citymall1@yahoo.com; andries.venter@lonmin.com; jknkosi@dla.gov.za; jbarnard@tiscali.co.za; pwolvaardt@xstrata.co.za; jvr@sun.ac.za; johanb@bwie.co.za; multrader@iafrica.com; greensys@global.co.za; rjlabuschagne@ra.rockwell.com; hhenning99@ovi.com; Engela.jansevanrensberg@bcx.co.za; renthiav@hotmail.com; dvanrensburg@afrihost.co.za; info@adj.co.za; mornaysport@gmail.com; motaunglucas25@gmail.com; pc@gwisa.com; jaco@gwisa.com; elandsafety@yahoo.com; dbjansen@vodamail.co.za; sealchem@telkomsa.net; morikoneng@telkomsa.net; jschoeman@xstrata.co.za; Wilkinson_Malan@vodamail.co.za; jannie.jacobs@lonmin.net; eulanda.jacobs@gmail.com; maritaprelec@netactive.co.za; vorsterwillem@gmail.com; rethian@hotmail.com; ekhohler@absa.co.za; willem@svsboerdery.co.za; schalla@svsboerdery.co.za; jonnysannette@gmail.com; mwvengalo@mweb.co.za; janc@absamail.co.za; goush@mweb.co.za; barendclark@gmail.com; admin@f3society.co.za; aletspe@yahoo.co.uk; eben.jubilieus@lonmin.com; rizettem@atkv.org.za; hettie.l@gwisa.com; Johnny.Pietasi@za.bosch.com; ansajoubert@yahoo.com; steafan_smith214@gmail.com; Pwolvaardt@xstrata.co.za; environment@vodamail.co.za; andresnr@alliedcranehire.co.za;

dot@monkeypuzzle.co.za; maritzja@mweb.co.za; trappersrtb@mweb.co.za; maos@gwisa.com; pjansevanrensburg@omnia.co.za; rpatton@mweb.co.za; jwesson@wessanorth.co.za; janejohn@mweb.co.za; kmarx@wessanorth.co.za; cjoubert02@amplats.co.za; ehemann@angloplat.com; jmalan@angloplat.com; andreb2@amplats.co.za; MarisaPienaar@assore.com; dave.starley@aquariusssa.co.za; general@kpm.co.za; geoff@bpcc.co.za; charliem@bakwena.co.za; josephine.krzyz@implats.co.za; Elize.swart@lonmin.com; Tara.anderson@lonmin.com; Karen.chetty@lonmin.com; Hazel.fiehn@lonmin.com; ecoombes@salene.com; lesegor@ifmsa.co.za; Walter.murray@samancorcr.com; Bill@transnet.co.za; claudk@spoonet.co.za; ben@hernic.co.za; chris@remig.co.za; sbuys@xstratacopper.cl; yvstaden@xstrata.co.za; svisser@xstrata.co.za; Magal001@mweb.co.za; phyllisg@magalieswater.co.za; phatelal@magalieswater.co.za; thurter@xstrata.co.za; elsa@remig.co.za; freddie.geldenhuys@murrob.com; bohmerw@eskom.co.za; bptransport@uiplay.com; bptransport@uiplay.com; buks.kruger@hotworks.co.za; Heather.fleming@samancorcr.com; hermanb@ifmsa.co.za; hhattingh@eastplats.co.za; Mojabatho.finger@transnet.net; ndawson@xstrata.co.za; Rejoice.makaba@eskom.co.za; roestok@eskom.co.za; sbyleveldt@xstrata.co.za; siju@mweb.co.za; Wendy.poulton@eskom.co.za

Cc: Stella Moeketse

Subject: Tharisa Minerals Scoping Report Available for Public Review

THARISA MINERALS (PTY) LTD

EIA/EMP AMENDMENT I

FOR THE PROPOSED CONSTRUCTION AND OPERATION OF THE CHROME SAND DRYING PLANT, CHANGES TO THE DESIGN OF THE TAILINGS STORAGE FACILITY AND OTHER OPERATIONAL AND SURFACE INFRASTRUCTURE CHANGES

SCOPING REPORT AND SUMMARY AVAILABLE FOR PUBLIC REVIEW

Dear Interested and/or Affected Parties (IAPs),

As you are aware, Tharisa Minerals (Pty) Ltd (Tharisa) is an existing platinum and chrome concentrate producing mine near Marikana Town in the Rustenburg Local Municipality in the North West Province. Tharisa proposes to construct and operate a chrome sand drying plant, change the design of the tailings storage facility and other operational and surface infrastructure changes at the mine. SLR Consulting (Africa) (SLR Africa) has been appointed by Tharisa to manage the environmental assessment process for the above-mentioned project components.

As part of the environmental assessment process, a scoping report has been produced by SLR Africa. The scoping report has been made available for public review. Please find attached a copy of the summary of the

scoping report which includes the details of the review period as well as places where hard copies of the report are available for review. Should you wish to receive a copy of the summary in Setswana please contact SLR Africa.

If you have any questions about the proposed project and/ or the EIA process, please do not hesitate to contact the undersigned.

Kind Regards,

Stella Moeketse

Environmental Assessment Practitioner

SLR Consulting (Africa) (Pty) Ltd

Email: smoeketse@slrconsulting.com

Mobile: [+27 72 380 5609](tel:+27723805609)

Tel: [+27 11 467 0945](tel:+27114670945)

Ext: 2010

Fax: [+27 11 467 0978](tel:+27114670978)

SLR Africa (Block 7)
Fourways Manor Office Park
2191, Cnr Roos and Macbeth Streets
Fourways, Johannesburg
South Africa, Johannesburg, 2060, South Africa

Victoria Tucker

SLR Consulting (Africa) (Pty) Ltd

Email: vtucker@slrconsulting.com

Mobile: [+27 83 533 3576](tel:+27835333576)

Tel: [+27 11 467 0945](tel:+27114670945)

Ext: 2007

Fax: [+27 11 467 0978](tel:+27114670978)

SLR Africa (Block 7)
Fourways Manor Office Park
2191, Cnr Roos and Macbeth Streets
Fourways, Johannesburg
South Africa, Johannesburg, 2060, South Africa

Stella Moeketse

From: Stella Moeketse
Sent: 08 February 2012 02:01 PM
To: hettie.l@gwisa.com
Subject: RE: THARISA MINERALS (PTY) LTD. EIA/EMP AMENDMENT I. FOCUSED SCOPING MEETING

Dear Hettie,

Thank you very much for the comments. We will capture, save the accordingly and they will be addressed in the EIA/EMP phase.

Many thanks

Kind regards

From: hettie.l@gwisa.com [mailto:hettie.l@gwisa.com]
Sent: 08 February 2012 01:47 PM
To: Stella Moeketse
Subject: Re: THARISA MINERALS (PTY) LTD. EIA/EMP AMENDMENT I. FOCUSED SCOPING MEETING

Herewith completed form

H Le Roux
Plot 7A
Buffelspoort
Cell:0835796866

-----Original Message-----

From: [Stella Moeketse](#)
Date: 2012/02/02 04:32:47 PM
To: hettie.l@gwisa.com
Subject: THARISA MINERALS (PTY) LTD. EIA/EMP AMENDMENT I. FOCUSED SCOPING MEETING

SLR Ref. No.: T014-12/ 710.20002.00012

26 January 2012

DEA Ref. No.: 12/9/11/L675/7

DMR Ref. No.: NW30/5/5/1/2/3/1/358

DEDECT Ref. No.: NWP/EIA/50/2011

THARISA MINERALS (PTY) LTD

EIA/EMP AMENDMENT I

FOCUSSED SCOPING MEETING FOR:

THE PROPOSED CONSTRUCTION AND OPERATION OF THE SMELTER HOUSE AND ASSOCIATED INFRASTRUCTURE, CONSTRUCTION AND OPERATION OF THE CHROME SAND DRYING PLANT, STORAGE OF HAZARDOUS SUBSTANCES, CHANGES TO THE DESIGN AND CHARACTERISTICS OF THE TAILINGS STORAGE FACILITY AND CHANGES TO THE GENERAL LAYOUT OF THE MINE

Dear Interested and affected parties (IAPs),

Tharisa Minerals (Pty) Ltd (Tharisa) is an existing chrome and platinum group metals (PGM) concentrate producing mine that is located on the farms Kafferskraal 342 JQ, Rooikoppies 297 JQ and Elandsdrift 467 JQ near Marikar. Tharisa Mine is situated in both the Rustenburg and Madibeng Local Municipalities and in the Bojanala Platinum District Municipality in the North West Province.

Tharisa proposes to construct and operate a PGM smelter house and associated infrastructure, construct and operate a chrome sand drying plant, store hazardous substances (eg. acid), store hazardous waste (eg. used acid), change the tailings storage facility (TSF) design and characteristics and change the general surface infrastructure layout at the Mine.

Prior to the commencement of the proposed projects an environmental assessment process including: a scoping and environmental impact assessment (EIA) phase and an environmental management programme (EMP) amendment will be undertaken and be approved by the regulatory authorities. SLR Consulting (Africa) (Pty) Ltd (SLR) has been appointed by Tharisa to manage the environmental assessment process for the proposed projects.

As public involvement is an essential component of the environmental assessment process, you have been identified as one of the key stakeholders that may be interested in hearing more about the project and that may wish to provide input into the environmental assessment process.

This letter serves to invite you to the focused meeting for the key stakeholders. The proposed details for the meeting are provided below.

- **Date:** 16th February 2012
- **Venue:** Retief Primary School (Hall)

- **Time:** 11h00

Please note as an alternative to the focussed meeting, there will be a general mass public meeting. The details of meeting are provided below.

- **Date:** 16th February 2012
- **Venue:** Retief Primary School (Hall)
- **Time:** 16h30

Attached please find a copy of the project's background information document (BID) prepared by SLR for your and comments.

For any further information please contact the undersigned.

Kind regards

Stella

Moeketse

For SLR Consulting (Africa) (Pty) Ltd

E-mail: smoeketse@slrconsulting.com

Stella Moeketse

Environmental Assessment Practitioner

SLR Consulting (Africa) (Pty) Ltd

Email: smoeketse@slrconsulting.com

Mobile: +27 72 380 5609

Tel: +27 11 467 0945

Fax: +27 11 467 0978

SLR Africa (Block 7)
Fourways Manor Office Park
2191, Cnr Roos and Macbeth Streets
Fourways, Johannesburg
South Africa, Johannesburg, 2060, South Africa



Confidentiality Notice and Disclaimer

This communication and any attachment(s) contains information which is confidential and may also be legally privileged. It is intended for the exclusive use of the recipient(s) to whom it is addressed. If you are not the intended recipient, any disclosure, copying, distribution or any action taken or omitted to be taken in reliance on it, is prohibited and may be unlawful. If you have received this communication in error please email us by return mail and then delete the email from your system together with copies of it. Please note that you are not permitted to print, copy, disclose or use part or all of the content in any way.

Emails and any information transmitted thereunder may be intercepted, corrupted or delayed. As a result, SLR does not accept responsibility for any errors or omissions howsoever caused and SLR accepts no responsibility for changes made to this email or any attachment after transmission from SLR. Whilst all reasonable endeavours are taken by SLR to screen all emails for key viruses, SLR cannot guarantee that any transmission will be virus free.

Any views or opinions are solely those of the author and do not necessarily represent those of SLR Management Ltd, or any subsidiaries, unless specifically stated.

SLR Consulting (South Africa) (Proprietary) Limited and SLR Consulting (Africa) (Proprietary) Limited are both subsidiaries of SLR Management Ltd.

Registered Office: Unit 2 Fourways Manor Office Park, Cnr Roos and Macbeth Street, Fourways, 2055, Gauteng, South Africa



[FREE Animations for your email - by IncrediMail!](#)

[Click Here!](#)

Stella Moeketse

From: Stella Moeketse
Sent: 02 February 2012 04:32 PM
To: hettie.l@gwisa.com
Subject: THARISA MINERALS (PTY) LTD. EIA/EMP AMENDMENT I. FOCUSSED SCOPING MEETING
Attachments: Scoping_focussed meeting invitation_26Jan2012.pdf; BID_Tharisa_EMPAmend_Eng_20Jan2012 PDF.pdf; T014-12 Figure 1 for Bid with Amendments Layout1 (1)_Email.jpg
Importance: High

SLR Ref. No.: T014-12/ 710.20002.00012
DEA Ref. No.: 12/9/11/L675/7
DMR Ref. No.: NW30/5/5/1/2/3/1/358
DEDECT Ref. No.: NWP/EIA/50/2011

26 January 2012

THARISA MINERALS (PTY) LTD EIA/EMP AMENDMENT I

FOCUSSED SCOPING MEETING FOR:

THE PROPOSED CONSTRUCTION AND OPERATION OF THE SMELTER HOUSE AND ASSOCIATED INFRASTRUCTURE, CONSTRUCTION AND OPERATION OF THE CHROME SAND DRYING PLANT, STORAGE OF HAZARDOUS SUBSTANCES, CHANGES TO THE DESIGN AND CHARACTERISTICS OF THE TAILINGS STORAGE FACILITY AND CHANGES TO THE GENERAL LAYOUT OF THE MINE

Dear Interested and affected parties (IAPs),

Tharisa Minerals (Pty) Ltd (Tharisa) is an existing chrome and platinum group metals (PGM) concentrate producing mine that is located on the farms Kafferskraal 342 JQ, Rooikoppies 297 JQ and Elandsdrift 467 JQ near Marikana town. Tharisa Mine is situated in both the Rustenburg and Madibeng Local Municipalities and in the Bojanala Platinum District Municipality in the North West Province.

Tharisa proposes to construct and operate a PGM smelter house and associated infrastructure, construct and operate a chrome sand drying plant, store hazardous substances (eg. acid), store hazardous waste (eg. used acid), change the tailings storage facility (TSF) design and characteristics and change the general surface infrastructure layout at Tharisa Mine.

Prior to the commencement of the proposed projects an environmental assessment process including: a scoping phase, environmental impact assessment (EIA) phase and an environmental management programme (EMP) amendment has to be undertaken and be approved by the regulatory authorities. SLR Consulting (Africa) (Pty) Ltd (SLR) has been appointed by Tharisa to manage the environmental assessment process for the proposed projects.

As public involvement is an essential component of the environmental assessment process, you have been identified as one of the key stakeholders that may be interested in hearing more about the project and that may wish to provide input into the environmental assessment process.

This letter serves to invite you to the focused meeting for the key stakeholders. The proposed details for the meeting are provided below.

- **Date:** 16th February 2012
- **Venue:** Retief Primary School (Hall)
- **Time:** 11h00

Please note as an alternative to the focussed meeting, there will be a general mass public meeting. The details of this meeting are provided below.

- **Date:** 16th February 2012
- **Venue:** Retief Primary School (Hall)
- **Time:** 16h30

Attached please find a copy of the project's background information document (BID) prepared by SLR for your perusal and comments.

For any further information please contact the undersigned.

Kind regards

Stella
Moeketse

*For SLR Consulting (Africa) (Pty) Ltd
E-mail: smoeketse@slrconsulting.com*

Stella Moeketse
Environmental Assessment Practitioner
SLR Consulting (Africa) (Pty) Ltd

Email: smoeketse@slrconsulting.com

Mobile: +27 72 380 5609

Tel: +27 11 467 0945

Fax: +27 11 467 0978

SLR Africa (Block 7)
Fourways Manor Office Park
2191, Cnr Roos and Macbeth Streets
Fourways, Johannesburg
South Africa, Johannesburg, 2060, South Africa



Confidentiality Notice and Disclaimer

This communication and any attachment(s) contains information which is confidential and may also be legally privileged. It is intended for the exclusive use of the recipient(s) to whom it is addressed. If you are not the intended recipient, any disclosure, copying, distribution or any action taken or omitted to be taken in reliance on it, is prohibited and may be unlawful. If you have received this communication in error please email us by return mail and then delete the email from your system together with any copies of it. Please note that you are not permitted to print, copy, disclose or use part or all of the content in any way.

Emails and any information transmitted thereunder may be intercepted, corrupted or delayed. As a result, SLR does not accept any responsibility for any errors or omissions howsoever caused and SLR accepts no responsibility for changes made to this email or any attachment after transmission from SLR. Whilst all reasonable endeavours are taken by SLR to screen all emails for known viruses, SLR cannot guarantee that any transmission will be virus free.

Any views or opinions are solely those of the author and do not necessarily represent those of SLR Management Ltd, or any of its subsidiaries, unless specifically stated.

SLR Consulting (South Africa) (Proprietary) Limited and SLR Consulting (Africa) (Proprietary) Limited are both subsidiaries of SLR Management Ltd.

Registered Office: Unit 2 Fourways Manor Office Park, Cnr Roos and Macbeth Street, Fourways, 2055, Gauteng, South Africa

