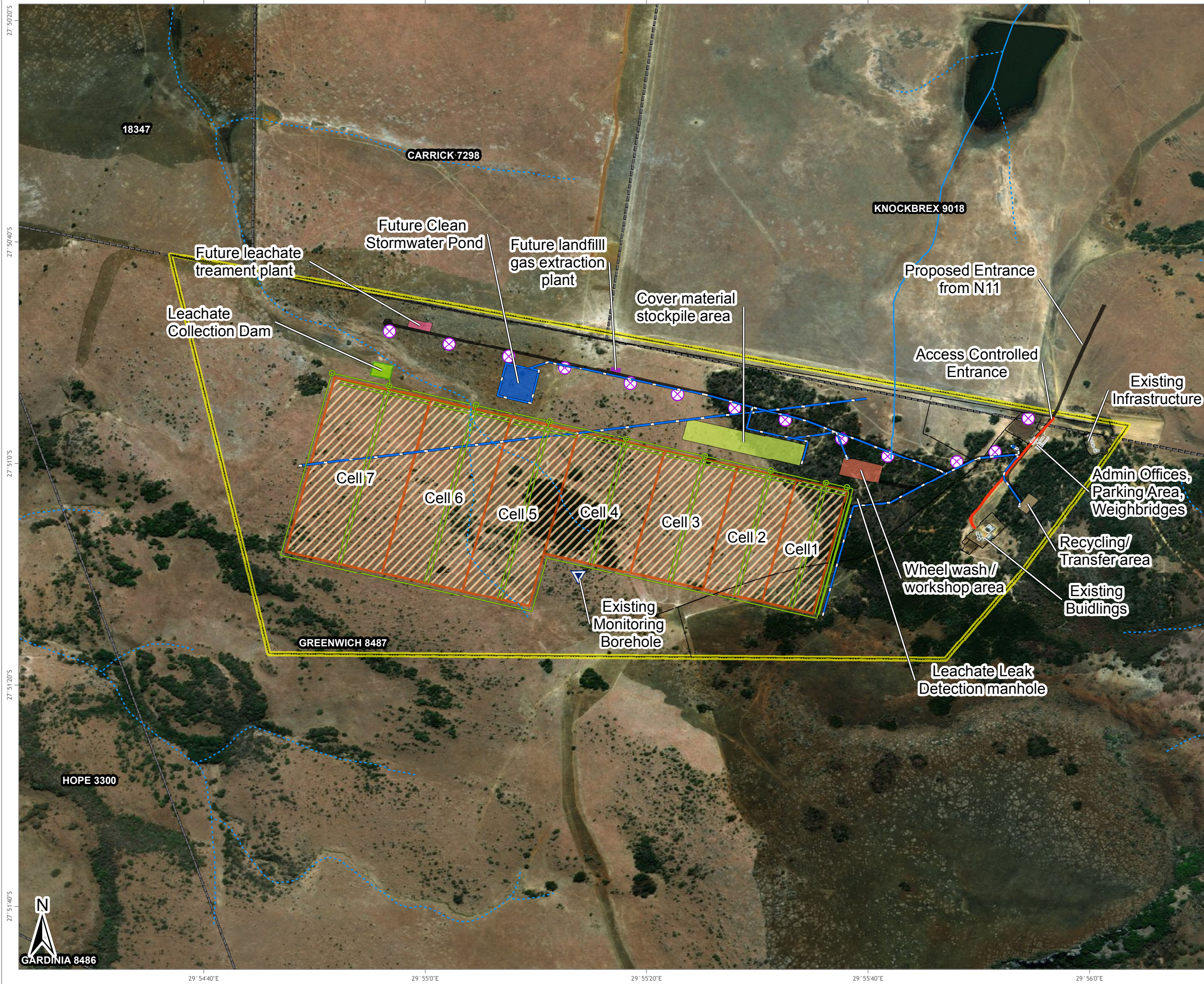
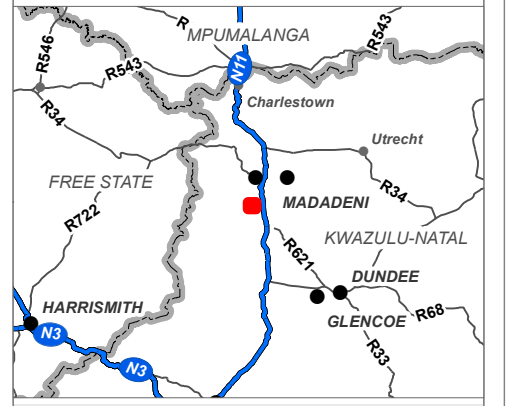


NEWCASTLE LANDFILL SITE: SITE LAYOUT



LEGEND

- Existing Monitoring Borehole
- Gas Monitoring Probe
- Rivers and Streams**
- Non-Perennial
- Perennial
- Leachate Lines
- Storm water chanel
- Other infrastructure
- Fence
- Road
- 2m Firebreak Along Perimeter
- Landfill Cells
- Cover material stockpile area
- Future Clean Stormwater Pond
- Future landfill gas extraction plant
- Future leachate treatment plant
- Leachate Collection Dam
- Perimeter Palisade Fence
- Recycling/Transfer area
- Roads
- Wheel wash / workshop area
- Parent farms



Data Sources:
ESRI Basemap: 2014/10/09

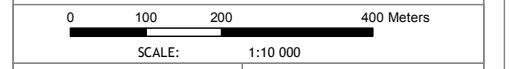


FIGURE NO.:	MAP NUMBER: 17-0212-10-V2
DRAWN BY: P CHETTY GIS SPECIALIST	REVIEWED BY: R PANAINO SENIOR ENVIRONMENTAL CONSULTANT
DATUM: WGS84 PROJECTION: GEOGRAPHIC	DATE: 10 APRIL 2018
PROJECT: NEWCASTLE LANDFILL SITE EIA CLIENT: ENVITECH SOLUTIONS	

63 Wessel Road Woodmead
PO Box 2597 Rivonia 2128
South Africa
Tel: +27 (0) 11 803 5726
Fax: +27 (0) 11 803 5745
E-mail: jhb@gcs-sa.biz
www.gcs-sa.biz



27° 50'20"S
27° 50'40"S
27° 51'00"S
27° 51'20"S
27° 51'40"S

29° 54'40"E 29° 55'0"E 29° 55'20"E 29° 55'40"E 29° 56'0"E