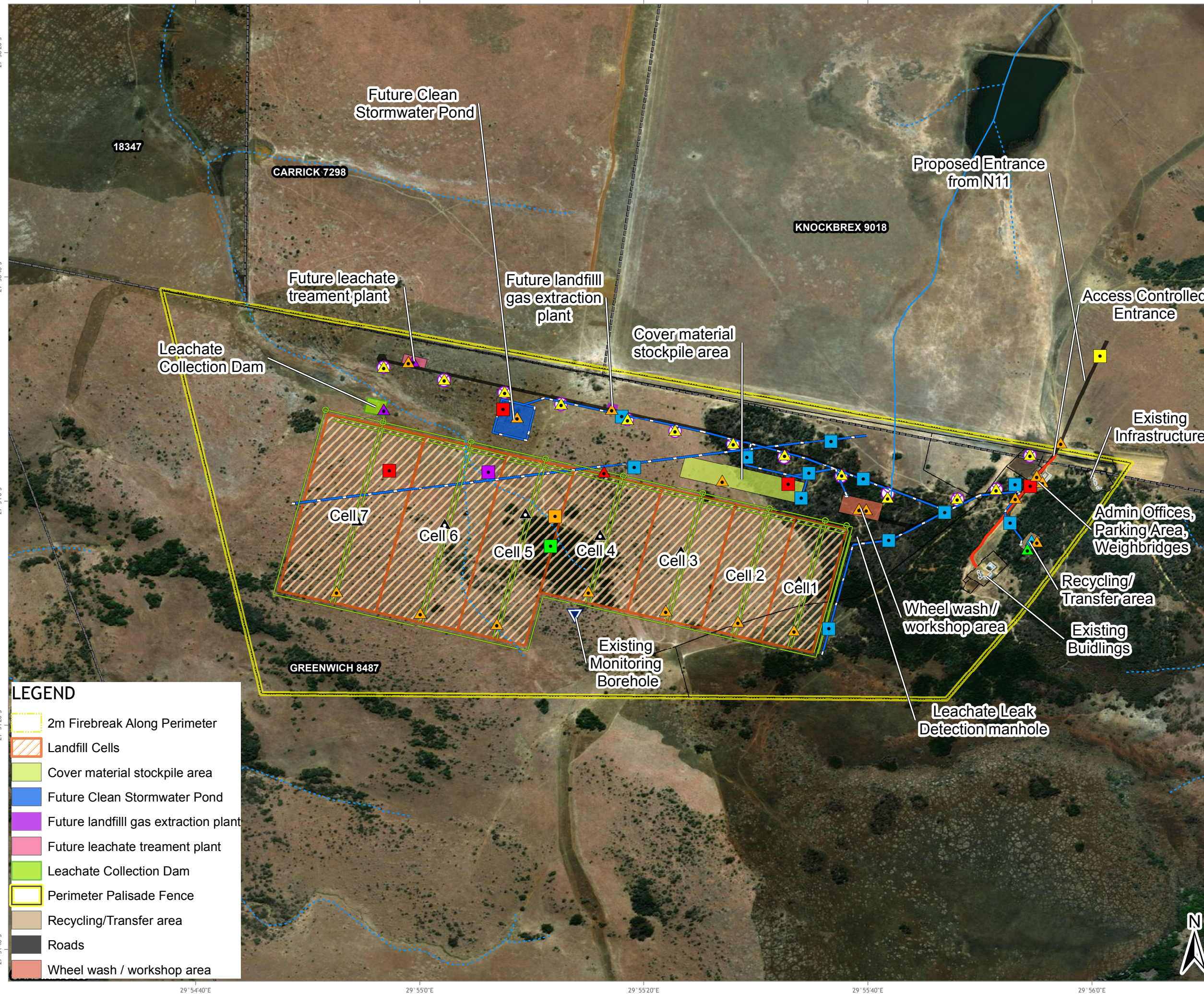


# NEWCASTLE LANDFILL SITE: LISTED ACTIVITIES



### LEGEND

#### Listed Activities

- ▲ Category A, Act. 3
- ▲ Category B Act. 6
- ▲ Category B, Act. 10
- ▲ Category B, Act. 6
- ▲ Category B, Act. 8
- ▲ Category C, Act. 5
- ▲ Category C, Act. 6
- GNR 544 Act. 9
- GNR 544 Act. 11
- GNR 545 Act. 15
- GNR 544 Act. 18
- GNR 544 Act. 22
- GNR 544 Act. 24
- ▼ Existing Monitoring Borehole
- ⊗ Gas Monitoring Probe

#### Rivers and Streams

- Non-Perennial
- Perennial
- Leachate Lines
- Storm water chanel
- Other infrastructure
- Fence
- Road
- Parent farms

### LEGEND

- 2m Firebreak Along Perimeter
- Landfill Cells
- Cover material stockpile area
- Future Clean Stormwater Pond
- Future landfill gas extraction plant
- Future leachate treatment plant
- Leachate Collection Dam
- Perimeter Palisade Fence
- Recycling/Transfer area
- Roads
- Wheel wash / workshop area



Data Sources: ESRI Basemap  
 SCALE: 1:10 000

FIGURE NO.:	MAP NUMBER: 17-0212-62
DRAWN BY: AMT MKHWANAZI GIS TECHNICIAN	REVIEWED BY: P CHETTY GIS SPECIALIST
DATUM: WGS84	DATE: 11 MAY 2018
PROJECTION: GEOGRAPHIC	
PROJECT: NEWCASTLE LANDFILL SITE EIA	
CLIENT: ENVITECH SOLUTIONS	

63 Wessel Road Woodmead  
 PO Box 2597 Rivonia 2128  
 South Africa  
 Tel: +27 (0) 11 803 5726  
 Fax: +27 (0) 11 803 5745  
 E-mail: jhb@gcs-sa.biz  
 www.gcs-sa.biz

27° 51' 40" S 29° 54' 40" E 27° 51' 20" S 29° 55' 0" E 27° 51' 0" S 29° 55' 20" E 27° 50' 40" S 29° 55' 40" E 27° 50' 20" S 29° 56' 0" E