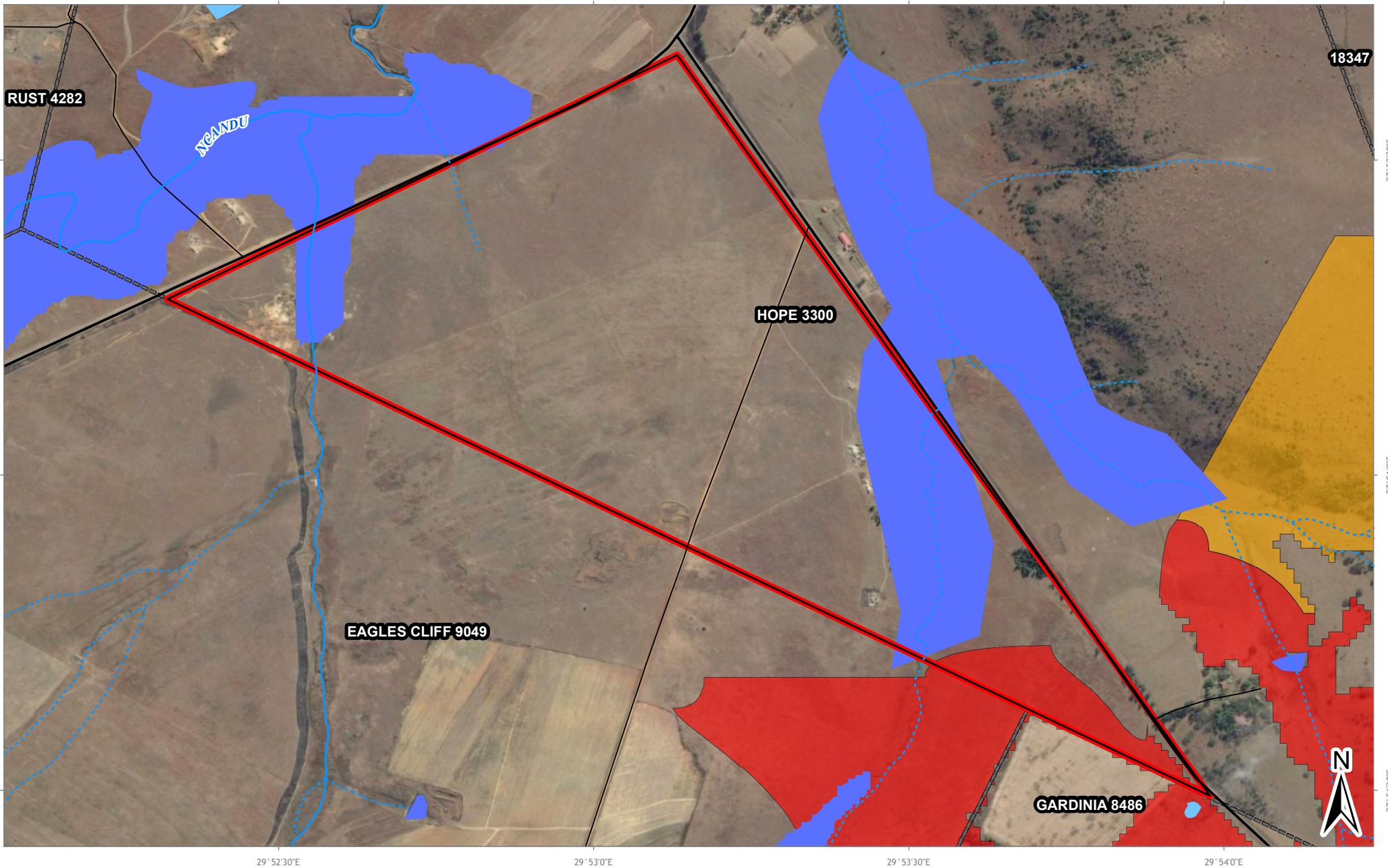
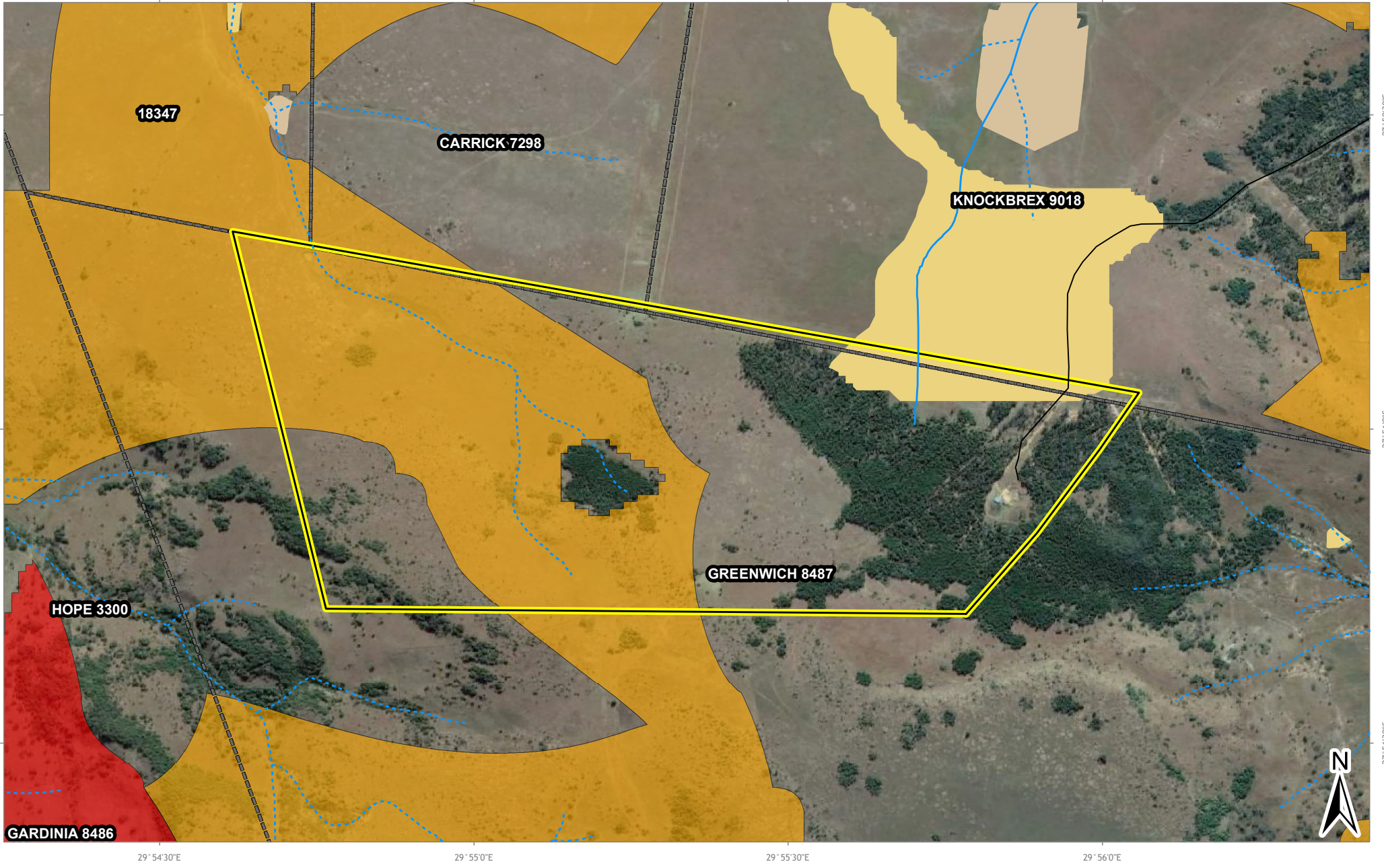


# NEWCASTLE LANDFILL - CBA & WETLANDS COMPARISON



## LEGEND

- |                           |                      |  |
|---------------------------|----------------------|--|
| <b>Rivers and Streams</b> | Greenwich study area | <b>NFEPA Wetlands</b>                            |
| Non-Perennial             | Hope study area      | Slope: Seep                                      |
| Perennial                 | CBA: Irreplaceable   | Valley floor: Channelled valley-bottom wetland   |
| <b>Road Network</b>       | CBA: Optimal         | Valley floor: Unchannelled valley-bottom wetland |
| National Route            |                      | Bench: Flat                                      |
| Main Road                 |                      |  |
| Secondary Road            |                      |  |
| Street                    |                      |  |



FIGURE NO. :	-
MAP NUMBER:	17-0212-57
DRAWN BY:	A BROWER GIS TECHNICIAN
REVIEWED BY:	P CHETTY GIS SPECIALIST
DATUM:	WGS84
PROJECTION:	GEOGRAPHIC
SCALE:	1:15 000

DATE:	04 MAY 2018
CLIENT:	ENVTECH SOLUTIONS
PROJECT:	NEWCASTLE LANDFILL SITE EIA
<small>Data Sources:                  South African National Biodiversity Institute (SANBI). NFEPA National Wetlands [vector geospatial dataset] 2012. Available from Biodiversity GIS website (<a href="http://bgis.sanbi.org/nfeпа/nfeпаmap.aspx?wetlandsmap">http://bgis.sanbi.org/nfeпа/nfeпаmap.aspx?wetlandsmap</a>), downloaded on 07/10/2014                  Ezemvelo KZN Wildlife. KZN CBA Optimal version 2016 [Vector] 2016. Available from the Biodiversity GIS website, downloaded on 03 March 2016</small>	
<small>63 Wessel Road Woodmead                  PO Box 2597 Rivonia 2128                  South Africa                  Tel: +27 (0) 11 803 5726                  Fax: +27 (0) 11 803 5745                  E-mail: jhb@gcs-sa.biz                  www.gcs-sa.biz</small>	