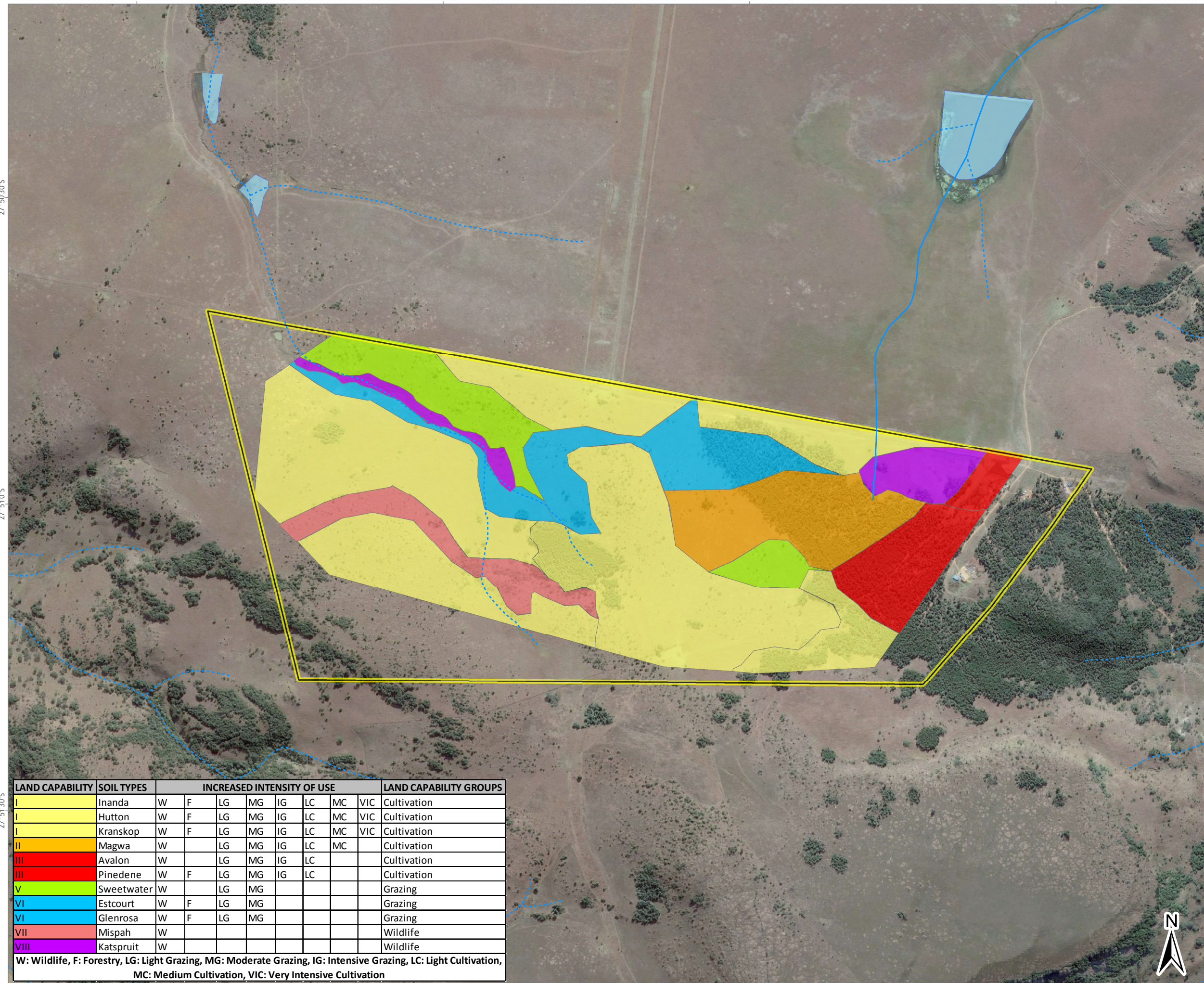


NEWCASTLE LANDFILL SITE: LAND CAPABILITY



LEGEND

Rivers and Streams

- Non-Perennial (dashed blue line)
- Perennial (solid blue line)

Perimeter Palisade Fence

- Yellow rectangle

Inland Water

- Dams and lakes (light blue area)

Land Capability

- I (yellow)
- II (orange)
- III (red)
- V (light green)
- VI (blue)
- VII (pink)
- VIII (purple)

27° 50' 30" S

27° 51' 0" S

27° 51' 30" S

LAND CAPABILITY	SOIL TYPES	INCREASED INTENSITY OF USE								LAND CAPABILITY GROUPS
I	Inanda	W	F	LG	MG	IG	LC	MC	VIC	Cultivation
I	Hutton	W	F	LG	MG	IG	LC	MC	VIC	Cultivation
I	Kranskop	W	F	LG	MG	IG	LC	MC	VIC	Cultivation
II	Magwa	W		LG	MG	IG	LC	MC		Cultivation
III	Avalon	W		LG	MG	IG	LC			Cultivation
III	Pinedene	W	F	LG	MG	IG	LC			Cultivation
V	Sweetwater	W		LG	MG					Grazing
VI	Estcourt	W	F	LG	MG					Grazing
VI	Glenrosa	W	F	LG	MG					Grazing
VII	Mispah	W								Wildlife
VIII	Katspruit	W								Wildlife

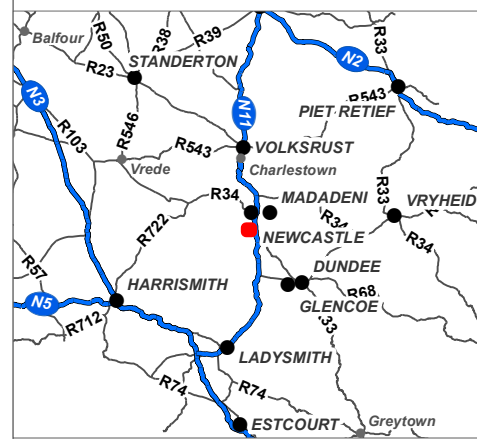
W: Wildlife, F: Forestry, LG: Light Grazing, MG: Moderate Grazing, IG: Intensive Grazing, LC: Light Cultivation, MC: Medium Cultivation, VIC: Very Intensive Cultivation

29° 54' 30" E

29° 55' 0" E

29° 55' 30" E

29° 56' 0" E



Data Sources:
 Google Earth™ mapping service: 2018
 Imagery Date: 22/05/2017
 Schoeman et al. (2002). Development and application of a land capability classification system for South Africa. Pretoria: Agricultural Research Council.

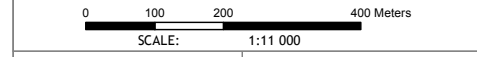


FIGURE NO.:	MAP NUMBER: 17-0212-70
DRAWN BY: AMT MKHWANAZI GIS TECHNICIAN	REVIEWED BY: P CHETTY GIS SPECIALIST
DATUM: WGS84	DATE: 15 MAY 2018
PROJECTION: GEOGRAPHIC	
PROJECT: NEWCASTLE LANDFILL SITE EIA	
CLIENT: ENVITECH SOLUTIONS	

63 Wessel Road Woodmead
 PO Box 2597 Rivonia 2128
 South Africa
 Tel: +27 (0) 11 803 5726
 Fax: +27 (0) 11 803 5745
 E-mail: jhb@gcs-sa.biz
 www.gcs-sa.biz

