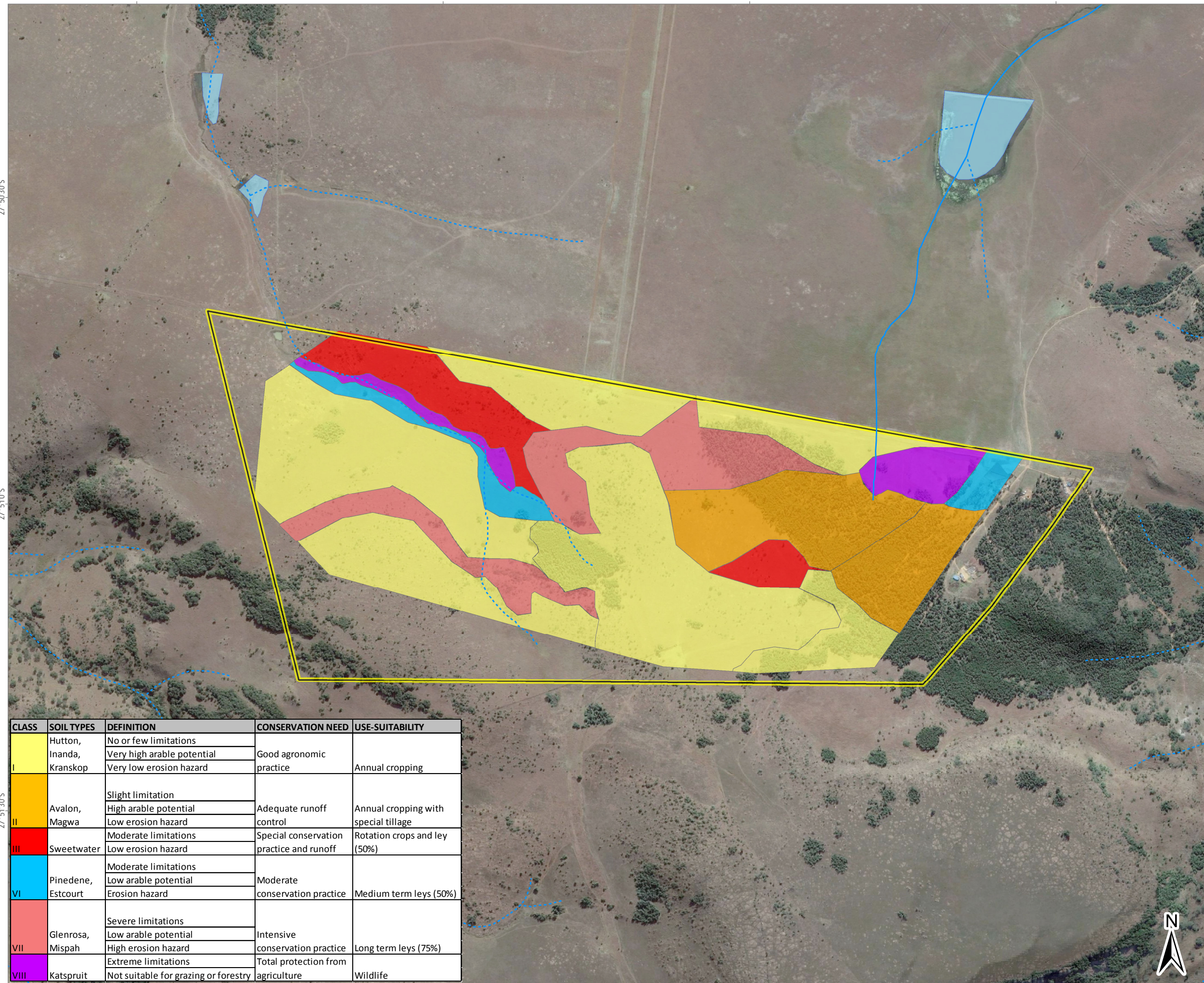


NEWCASTLE LANDFILL SITE: LAND SUITABILITY



LEGEND

Rivers and Streams

- Non-Perennial (dashed blue line)
- Perennial (solid blue line)

Perimeter Palisade Fence

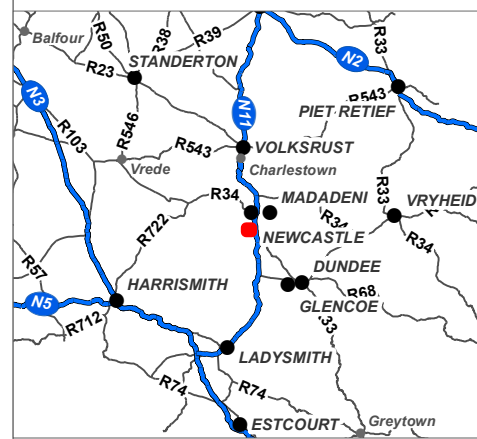
- Yellow outline

Inland Water

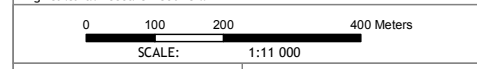
- Dams and lakes (light blue)

Land Suitability

- I (yellow)
- II (orange)
- III (red)
- VI (cyan)
- VII (pink)
- VIII (purple)



Data Sources:
 Google Earth™ mapping service: 2018
 Imagery Date: 22/05/2017
 Schoeman et al. (2002). Development and application of a land capability classification system for South Africa. Pretoria: Agricultural Research Council.



| | |
|---|---|
| FIGURE NO.: | MAP NUMBER: 17-0212-71 |
| DRAWN BY: AMT MKHWANAZI GIS TECHNICIAN | REVIEWED BY: P CHETTY GIS SPECIALIST |
| DATUM: WGS84 | DATE: 15 MAY 2018 |
| PROJECTION: GEOGRAPHIC | |
| PROJECT: NEWCASTLE LANDFILL SITE EIA | |
| CLIENT: ENVITECH SOLUTIONS | |

| CLASS | SOIL TYPES | DEFINITION | CONSERVATION NEED | USE-SUITABILITY |
|-------|--------------------------------|--------------------------------------|---|---|
| I | Hutton, Inanda, Kranskop | No or few limitations | Good agronomic practice | Annual cropping |
| | | Very high arable potential | | |
| | | Very low erosion hazard | | |
| II | Avalon, Magwa | Slight limitation | Adequate runoff control | Annual cropping with special tillage |
| | | High arable potential | | |
| | | Low erosion hazard | | |
| III | Sweetwater | Moderate limitations | Special conservation practice and runoff | Rotation crops and ley (50%) |
| | | Low erosion hazard | | |
| VI | Pinedene, Estcourt | Moderate limitations | Moderate conservation practice | Medium term leys (50%) |
| | | Low arable potential | | |
| VII | Glenrosa, Mispah | Severe limitations | Intensive conservation practice | Long term leys (75%) |
| | | Low arable potential | | |
| VIII | Katspruit | High erosion hazard | Total protection from agriculture | Wildlife |
| | | Extreme limitations | | |
| | | Not suitable for grazing or forestry | | |

63 Wessel Road Woodmead
 PO Box 2597 Rivonia 2128
 South Africa
 Tel: +27 (0) 11 803 5726
 Fax: +27 (0) 11 803 5745
 E-mail: jhb@gcs-sa.biz
 www.gcs-sa.biz



27°50'30"S
27°51'0"S
27°51'30"S

29°54'30"E 29°55'0"E 29°55'30"E 29°56'0"E