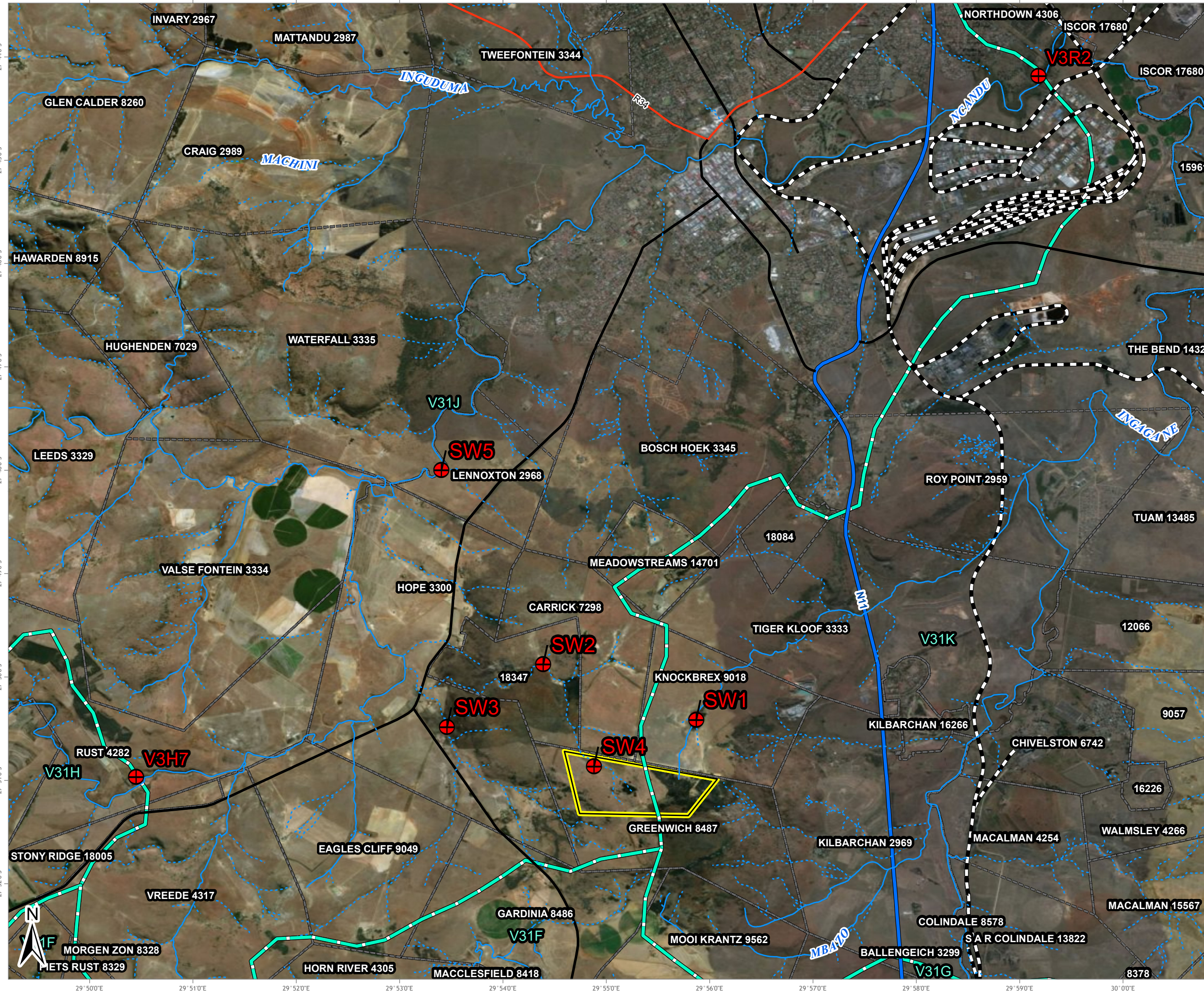
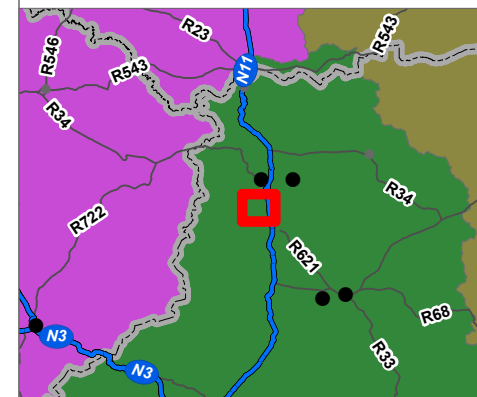


NEWCASTLE LANDFILL SITE: BASELINE WATER QUALITY MONITORING LOCALITIES



LEGEND

- Baseline Water Quality Monitoring Localities
- Rivers and Streams
 - Non-Perennial
 - Perennial
- Road Network
 - National Route
 - Main Road
 - Secondary Road
 - Railway Line
- Quaternary catchments
- Farm Portions
- Site Location
- Water management areas
 - Thukela
 - Upper Vaal
 - Usutu To Mhlathuze



Data Sources:
 Google Earth™ mapping service: 2018
 Imagery Date: 22/05/2017

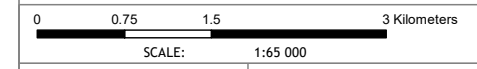


FIGURE NO.:	MAP NUMBER: 17-0212-23-V2
DRAWN BY: A BROWER GIS TECHNICIAN	REVIEWED BY: P CHETTY GIS SPECIALIST
DATUM: WGS84	DATE: 11 APRIL 2018
PROJECTION: GEOGRAPHIC	

PROJECT: NEWCASTLE LANDFILL SITE EIA
 CLIENT: ENVITECH SOLUTIONS

63 Wessel Road Woodmead
 PO Box 2597 Rivonia 2128
 South Africa
 Tel: +27 (0) 11 803 5726
 Fax: +27 (0) 11 803 5745
 E-mail: jhb@gcs-sa.biz
 www.gcs-sa.biz