

This drawing is property of AMDAenergia and THE CLIENT and may not be copied (in whole or in part), used for manufacture or disclosed without prior written consent of AMDAenergia, THE CLIENT or an authorized agent.

General Notes:

Configuration:

| Reference Co-ordinates | |
|------------------------|---|
| UTM | X: 757,299 m Time zone 34 |
| | Y: 6,862,268 m |
| GEO | LATITUDE: -28.340591 N |
| | LONGITUDE: 23.624684 E WGS 1984 System |
| Elevation 1448 m | |

Legend:

| | | | |
|--|---------------------|--|---------------------|
| | Building | | River / Stream |
| | Cultivated land | | Road |
| | Excavation | | Substation |
| | Farm limit | | Telkomsa line |
| | Power line | | Track / path |
| | Table of PV Modules | | Staff building area |
| | Access gate | | Meteo Equipment |
| | Delivery cabin | | Connection line |
| | Connection point | | Access Road |
| | Assembly area | | Internal road |
| | Laydown area | | Delivery cabin area |

| Rev. | Description | Date | Author |
|------|---------------|------------|-----------|
| A | First edition | 30/07/2012 | R.Latorre |

Horizontal Scale in meters
Graphical

Client:

Country: South Africa
Address: Lime Acres

Project: Olien I PV Power plant
Project No.: ZA06-2012OLI01

Title: Site Development Plan

Raúl Latorre
Industrial Engineer: Raúl Latorre Rodrigo
Prof. Eng. No.: 3103 COIAR (Spain)

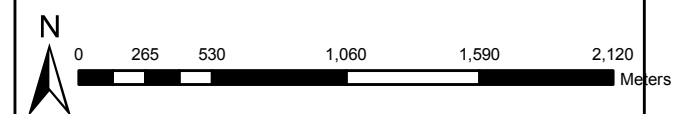
| | DATE | NAME - SURNAME | Rev: | Sheet: |
|-----------|------------|----------------|----------|-------------------|
| DRAWN: | 30/07/2012 | R. Latorre | A | 1 of 1 |
| CHECKED: | 30/07/2012 | A. Mallet | N / A | A3 |
| APPROVED: | 30/07/2012 | J. Gutierrez | DWG No.: | OLI0100-1207001-A |

AMDA energía SA
CIF: A-98024219
C/ Silveria Fañanas 43, local
50011 Zaragoza, SPAIN
T. +34 976 531 020

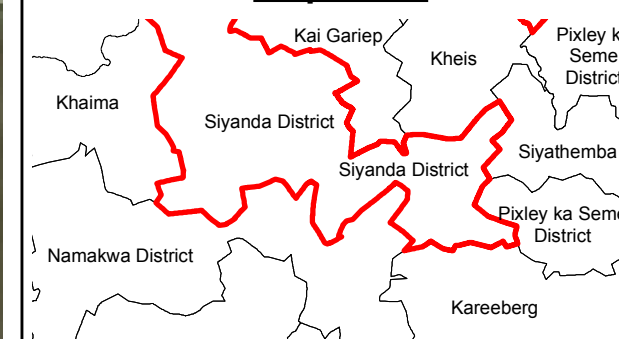


Notes

- Map Scale is 1 : 12 000 when printed on A3.
- Aerial Image courtesy of Google Earth Pro 2012
- Imagery date January 2010.
- Cadastral Data: Surveyor General



Map Index



Study site in relation to total farm portion

Olien Solar Project

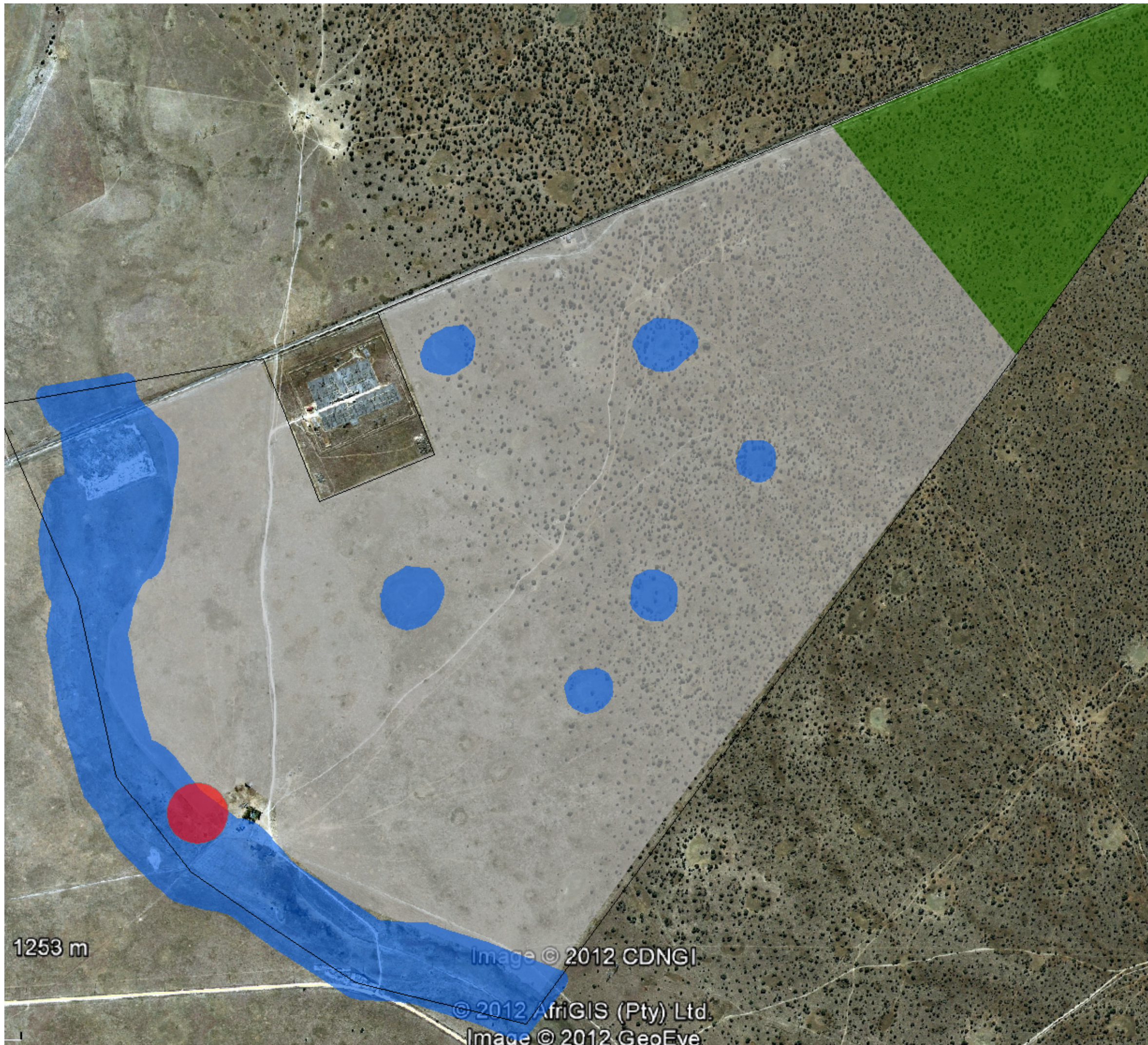
Legend

- Study Site: Portion 4 of 300
- Total Property: Portion 4 of 300
- Siyanda Farm Portions

| Drawn | Checked | Date | Reference |
|-------------|---------------------|-------------------|-----------|
| Dale Holder | Francini van Staden | 11 September 2012 | KGA167/09 |



Cape Environmental Assessment Practitioners (Pty) Ltd



Notes

- Map Scale is 1 : 12 000 when printed on A3.
- Aerial Image courtesy of Google Earth Pro 2012
- Imagery date January 2010.
- All Buffers Digitally Generated
- Aquatic Features: NFEPA (2011)
- Grave Site: Morris (2012)
- Sensitive Ecological Area: Todd (2012)



Map Index

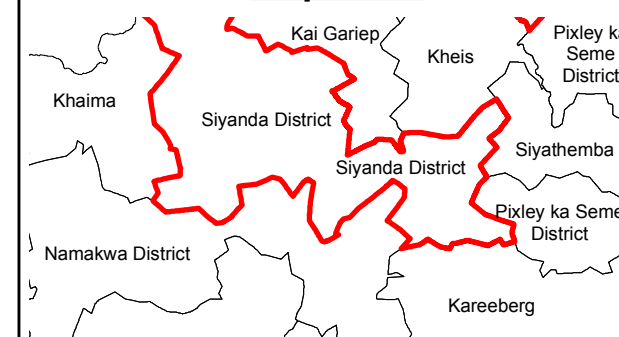


Figure 13: Constraints Map

Olien Solar Project

Legend

- Portion 4 of 300 (Study Site)
- Sensitive Ecological Area
- 100m buffer of Grave Site
- 32m Buffer of Aquatic Features
- Proposed Development Area

| Drawn | Checked | Date | Reference |
|-------------|---------------------|-------------------|-----------|
| Dale Holder | Francini van Staden | 11 September 2012 | KGA167/09 |



Cape Environmental Assessment
Practitioners (Pty) Ltd