

Site Notice:

**OMGEWINGSKENNISGEWING: PROSPEKTEERREG AANSOEK**

Kennis geskied hiermee in terme van Artikel 16 van die Minerale en Petroleum Hulpbron Ontwikkelings Wet (Wet No. 28 van 2002) (MPRDA), en Hoofstuk 6 van die Regulasies oor Omgewingsimpakbeplanning, 2014, uitgevaardig kragtens die Nasionale Wet op Omgewingsbestuur (Wet 107 van 1998, soos gewysig) (NEMA) vir 'n aansoek tot 'n Prospekterreg en Omgewingsmagtiging.

**Aard van Aktiwiteite:**

Black Mountain Mining (Edms) Bpk, het 'n aansoek vir 'n Prospekterreg ingedien om te bepaal of ekonomiese lewensvatbare minerale bronne van ysterhoudende en basismetale Koper, Yster, Lood, sink, Mangaan, Nikkel, Molibdeen, Goud en Silwer en alle verwante metale en minerale in die aansoek area voorkom. Beide nie- indringende en indringende prospekteringsmetodes sal toegepas word.

Die volgende NEMA-gelyste aktiwiteite word ingesluit by hierdie aansoek aan die bevoegde owerheid, die Departement van Minerale Hulpbronne: Kennisgewing 1 (GNR 983) Aktiwiteit 20: Aktiwiteite wat direk verband hou met prospektering van minerale hulpbronne, insluitend die werking van daardie aktiwiteit van 'n prospekterreg in terme van Artikel 16 van die MPRDA, insluitend gepaardgaande infrastruktuur, strukture en grondwerke wat direk verband hou met prospektering van 'n minerale hulpbron.

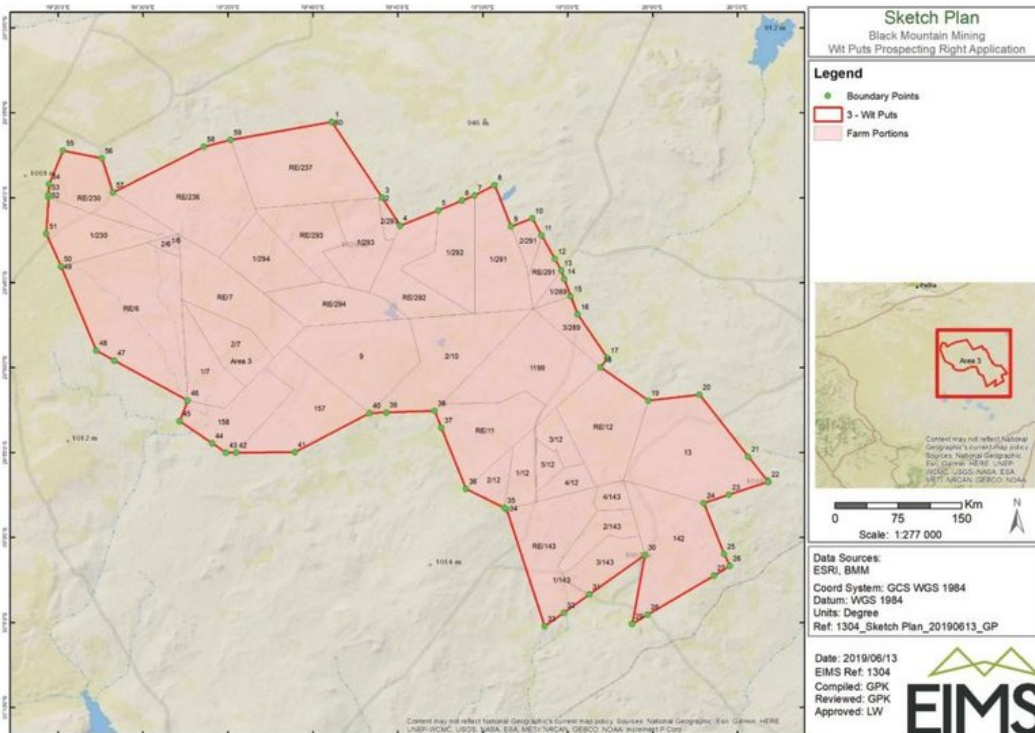
Kennisgewing 1 (GNR 983) Aktiwiteit 27: Die opruiming van 'n oppervlakte van 1 hektaar of meer, maar minder as 20 hektaar inheemse plantegroei. Kennisgewing 3 (GNR 985) Aktiwiteit 12 g ii: Die verwydering van 300 vierkante meter of meer inheemse plantegroei behalwe waar sulke verwydering benodig word vir onderhoud doeleindes soos uitgeset in 'n onderhoudsbestuursplan. In die Noord-Kaap: Binne kritiese biodiversiteitsareas geïdentifiseer in biostreeksplanne.

**Ligging**

Die voorgestelde prospektering gebied is ongeveer 114 kilometers Suid oos van die dorp Aggeneys en 200 kilometers Oos van die dorp Springbok, Calvinia en Kenhardt Distrik, Noord-Kaap Provinsie. Die eiendomme wat in hierdie kennis gelys word, kan verander na die aanvaarding van die Prospekterreg-aansoek deur die DMR. Indien die aansoekarea verander, sal die opgedateerde eiendomme in die konsep Basiese Evalueeringsverslag voorsien word wat beskikbaar sal wees vir publieke kommentaar.

**Eiendomme:**

Plaas Nieu Jaars 6- Gedeelte 0 RE, Gedeelte 1 RE, Gedeelte 2; Plaas Koebas Hoek 7- Gedeelte 0 RE, Gedeelte 1 RE, Gedeelte 2; Plaas Wit Puts 9 Gedeelte 0; Plaas Boks Kolk 10 Gedeelte 2; Plaas Zout Dwaggas 11 Gedeelte 0 RE; Plaas Gurreys 12- Gedeelte 0 RE, Gedeelte 1 RE, Gedeelte 2, Gedeelte 3 RE, Gedeelte 4, Gedeelte 5; Plaas Hou Hou 13 Gedeelte 0; Plaas Teriris 142 Gedeelte 0; Plaas Onap 143- Gedeelte 0 RE, Gedeelte 1, Gedeelte 2 RE, Gedeelte 3, Gedeelte 4; Plaas Karesse 157 Gedeelte 0; Plaas Izaks Puts 158 Gedeelte 0; Plaas Soutdwaggas 1199 Gedeelte 0; Plaas Burtons-Vlei 230- Gedeelte 0 RE, Gedeelte 1; Plaas Klercks Goubep 236 Gedeelte 0; Plaas Baiang Putsen 237 Gedeelte 0; Plaas Ysis 289- Gedeelte 1 RE, Gedeelte 3; Plaas Ramans Kolk 291- Gedeelte 0 RE, Gedeelte 1, Gedeelte 2 RE; Plaas Bossie Kom 292- Gedeelte 0 RE, Gedeelte 1; Plaas Half Kroon 293- Gedeelte 0 RE, Gedeelte 1, Gedeelte 2; Plaas Wolf Kop 294- Gedeelte 0 RE, Gedeelte 1.



**Aansoek area grootte**

Die area grootte is 174 126 hektaar

**EIMS Verwysingsnommer:**

1304-3

**DMR Verwysingsnommer:**

NC305/1/11/2/12390PR

**Datum van Kennisgewing plasing:**

25 Julie 2019

**Registrasie en Kommentaar:**

Belanghebbende en Geaffekteerde Partye (B&GPe) word hiermee 'n geleentheid voorsien om te registreer en kommentaar te lewer op die voorgestelde aktiwiteite. Ten einde te verseker dat u geregistreer is as 'n B&GP, verstrek asseblief u naam, kontakbesonderhede en rede vir belangstelling, skriftelik of telefonies, aan Environmental Impact Management Services (Edms) Bpk. Let asseblief daarop dat slegs geregistreerde B&GPe ingesluit sal word by toekomstige korrespondensie met betrekking tot hierdie projek. Stuur asseblief enige navrae, kommentaar, knelpunte of voorstelle (insluitend die verwysingsnommer 1304-3) na:

**Environmental Impact Management Services (Pty) Ltd (EIMS)**

Posbus 19731, Tecoma, 5214  
 Telephone: 043 722-7572 / Faks: 086 571 9047  
 Kontakpersoon: GP Kriel  
 Epos: witputs@eims.co.za



## ENVIRONMENTAL NOTIFICATION: PROSPECTING RIGHT APPLICATION

Notice is given in terms of Section 16 of the Mineral and Petroleum Resources Development Act, 2002 (Act No. 28 of 2002) (MPRDA), and Chapter 6 of the Environmental Impact Assessment Regulations, 2014 promulgated under the National Environmental Management Act (Act 107 of 1998) (NEMA, as amended), of application for individual prospecting right applications and Environmental Authorisations.

### Nature of Activity:

The applicant, Black Mountain Mining (Pty) Ltd, is applying for individual prospecting right applications in order to ascertain if economically viable mineral deposits exist within the application area for the following: Copper, Iron, Lead, Zinc, Manganese, Nickel, Molybdenum, Gold and Silver and all associated metals and minerals. Both non-invasive and invasive prospecting techniques will be utilized.

The following NEMA listed activities have been applied for to the Competent Authority, the Department of Mineral Resources, for this application:

Listing Notice 1 (GNR 983) Activity 20: Activities directly related to prospecting of a mineral resource, including the operation of that activity which requires a prospecting right in terms of section 16 of the Mineral and Petroleum Resources Development Act, 2002 (Act No. 28 of 2002), including associated infrastructure, structures and earthworks, directly related to prospecting of a mineral resource.

Listing Notice 1 (GNR 983) Activity 27: The clearance of an area of 1 hectare or more, but less than 20 hectares of indigenous vegetation.

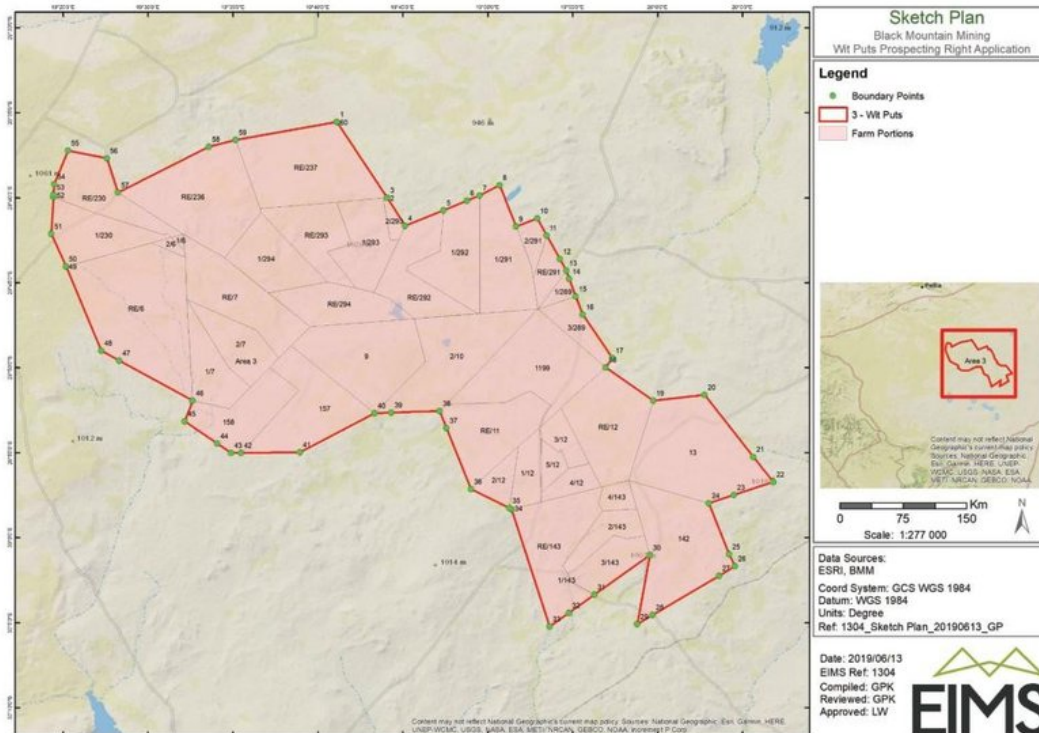
Listing Notice 3 (GNR 985) Activity 12 (g) (ii): The clearance of an area of 300 square metres or more of indigenous vegetation within critical biodiversity areas identified in bioregional plans.

### Location:

The area is located approximately 114 kilometers South East of the town of Aggeneys and 200 kilometers East of the town of Springbok, Calvinia and Kenhardt District, Northern Cape Province. The application area depicted below may change after acceptance of the Prospecting Right Application by the DMR. Should the application area change, the updated properties will be provided in the draft Basic Assessment Report which will be available for public comment.

### Farm Portions:

Farm Nieuw Jaars 6- Portion 0 RE, Portion 1 RE, Portion 2; Farm Koebas Hoek 7- Portion 0 RE, Portion 1 RE, Portion 2; Farm Wit Puts 9 Portion 0; Farm Boks Kolk 10 Portion 2; Farm Zout Dwaggas 11 Portion 0 RE; Farm Gurreys 12- Portion 0 RE, Portion 1 RE, Portion 2, Portion 3 RE, Portion 4, Portion 5; Farm Hou Hou 13 Portion 0; Farm Teriis 142 Portion 0; Farm Onap 143- Portion 0 RE, Portion 1, Portion 2 RE, Portion 3, Portion 4; Farm Kareses 157 Portion 0; Farm Izaks Puts 158 Portion 0; Farm Soutdwaggas 1199 Portion 0; Farm Burtons-Vlei 230- Portion 0 RE, Portion 1; Farm Klerks Goubeep 236 Portion 0; Farm Baiang Putsen 237 Portion 0; Farm Ysis 289- Portion 1 RE, Portion 3; Farm Ramans Kolk 291- Portion 0 RE, Portion 1, Portion 2 RE; Farm Bossie Kom 292- Portion 0 RE, Portion 1; Farm Half Kroon 293 Portion 0 RE, Portion 1, Portion 2; Farm Wolf Kop 294- Portion 0 RE, Portion 1.



### Application Area Size:

Wit Puts covers an area of about 174 126 hectares

### EIMS Reference Number:

1304-3

### DMR Reference Number:

NC30/5/1/112/12390PR

### Date of Placement:

25 July 2019

### Registration and Comment:

Interested and Affected Parties (I&AP's) are hereby provided with an opportunity to register and comment on the proposed activity and application. In order to ensure that you are identified and registered as an interested and affected party (I&AP) please submit your name, contact details and the reason for your interest, in writing or telephonically, to Environmental Impact Management Services (Pty) Ltd. Please note that only registered I&AP's will be included in future correspondence regarding this project. Please submit any queries, comments, concerns or issues (including the reference number 1304-3) to:

### Environmental Impact Management Services (Pty) Ltd (EIMS)

P. O. Box 19731, Tecoma, 5214  
Phone: 043 722-7572 / Fax: 086 571 9047  
Contact: GP Kriel  
Email: witputs@eims.co.za

### Locality Map:



Site Notice: 24/07/2019 14:53:29; GPS Coordinates: 0.000000, 0.000000



SN01

Site Notice: 24/07/2019 15:02:29; GPS Coordinates: 0.000000, 0.000000



SN02

Site Notice: 24/07/2019 15:20:39; GPS Coordinates: -30.029289, 19.843196



SN03

Site Notice: 24/07/2019 15:39:43; GPS Coordinates: -29.977589, 19.880964



SN04

Site Notice: 24/07/2019 16:03:29; GPS Coordinates: -29.869933, 19.895995



SN05

Site Notice: 25/07/2019 07:41:04; GPS Coordinates: 0.000000, 0.000000



SN06

Site Notice: 25/07/2019 08:10:11; GPS Coordinates: -29.609082, 19.478641



SN07

Site Notice: 25/07/2019 08:38:48; GPS Coordinates: -29.609082, 19.478641



SN08

Site Notice: 25/07/2019 09:10:30; GPS Coordinates: -29.792406, 19.924697



BID06

Site Notice: 25/07/2019 09:22:15; GPS Coordinates: -29.792497, 19.924679



SN09

Handout: 24/07/2019 14:31:11; GPS Coordinates: -30.035121, 19.910355





**BID01**

**Handout: 24/07/2019 14:38:20; GPS Coordinates: -30.063761, 19.951043**



**BID 02**

**Handout: 24/07/2019 14:45:32; GPS Coordinates: -30.069947, 19.982902**



BID03



BID03 I&Ap

Handout: 24/07/2019 16:37:04; GPS Coordinates: 0.000000, 0.000000



**BID04 I&AP**

**Handout: 25/07/2019 07:45:53; GPS Coordinates: -29.585711, 19.398271**



**BID05**

# GENERAL NOTICES • ALGEMENE KENNISGEWINGS

## NOTICE 83 OF 2019

### ENVIRONMENTAL NOTIFICATION: PROSPECTING RIGHT APPLICATION

Notice is given in terms of Section 16 of the Mineral and Petroleum Resources Development Act, 2002 (Act No. 28 of 2002) (MPRDA), and Chapter 6 of the Environmental Impact Assessment Regulations, 2014 promulgated under the National Environmental Management Act (Act 107 of 1998) (NEMA, as amended), of application for individual prospecting right applications and Environmental Authorisations.

#### Nature of Activity:

The applicant, Black Mountain Mining (Pty) Ltd, is applying for individual prospecting right applications in order to ascertain if economically viable mineral deposits exist within the application areas as listed below. Both non-invasive and invasive prospecting techniques will be utilized and will be applied for each of the applications:

Application Name	Area 1- Gifkop	Area 2- Jaagers Plaats	Area 3- Wit Puts
Commodities:	Ferrous & base metals (Copper, Iron, Lead, Zinc, Manganese, Nickel, Molybdenum) and all associated metals and minerals, precious metals (Gold, Silver) and all associated metals and minerals	Ferrous & base metals (Copper, Iron, Lead, Zinc, Manganese, Nickel, Molybdenum) and all associated metals and minerals, precious metals (Gold, Silver) and all associated metals and minerals	Ferrous & base metals (Copper, Iron, Lead, Zinc, Manganese, Nickel, Molybdenum) and all associated metals and minerals, precious metals (Gold, Silver) and all associated metals and minerals
Property details*  The properties listed in this table may change after acceptance of the Prospecting Right Applications by the DMR. Should the application area change, the updated properties will be provided in the draft Basic Assessment Report which will be available for public comment.	Farm Doels Vley 161 Portion 1; Farm Wiel Kolk 162 Portion 0; Farm Gifkop 166-Portion 0 RE, Portion 1, Portion 2, Portion 3 RE, Portion 4 RE, Portion 5 RE, Portion 6, Portion 7, Portion 8, Portion 9, Portion 10, Portion 11, Portion 12; Farm Paul Se Vley 167 Portion 0; Farm Tweeling 168- Portion 0, Portion 1; Farm Annex Koffie Meul 169 Portion 1; Farm Koffie Meul 170 Portion 0 RE, Portion 1; Farm Kapsvlei 174- Portion 0 RE, Portion 1, Portion 2, Portion 3 RE, Portion 4, Portion 5, Portion 6, Portion 7, Portion 8; Farm Blaauw Pan 175 Portion 0; Farm Hoepel 180- Portion 0 RE, Portion 1, Portion 2; Farm Groot Zevenfontein West 181 Portion 0; Farm Lospers Plaats 218 Portion 0 RE, Portion 0 RE, Portion 1.	Farm Weltevreden 146-Portion 0 RE, Portion 2, Portion 3; Farm Klein Brand Pens 147-Portion 0 RE, Portion 1 RE, Portion 4; Farm Lemoendoorn 148- Portion 0 RE, Portion 1; Farm Blouputs 149 Portion 0; Farm Groot Brand Pens 150 Portion 1 RE; Farm Granaat Bosch Kolk 151- Portion 0 RE, Portion 1; Farm Abrahams Kop 152- Portion 1, Portion 2, Portion 2, Portion 4; Farm Nutiep 153-Portion 1, Portion 2; Farm Jaagers Plaats 154-Portion 0 RE, Portion 1; Farm Groot Zevenfontein East 155- Portion 1, Portion 2; Farm Abiquas Kolk Oost 156- Portion 3 RE, Portion 4; Farm Dik Pens 182- Portion 0 RE, Portion 2 RE, Portion 3, Portion 4, Portion 5, Portion 6, Portion 7, Portion 8, Portion 9, Portion 10, Portion 11, Portion 12; Farm Water Kuil 185- Portion 0 RE, Portion 1; Farm Dwaggas West 186 Portion 0; Farm Dwaggas Oost 190 Portion 1; Farm Hyes 191 Portion 1; Farm Blouville 1155 Portion 0.	Farm Nieuw Jaars 6- Portion 0 RE, Portion 1 RE, Portion 2; Farm Koebas Hoek 7- Portion 0 RE, Portion 1 RE, Portion 2; Farm Wit Puts 9 Portion 0; Farm Boks Kolk 10 Portion 2; Farm Zout Dwaggas 11 Portion 0 RE; Farm Gurreys 12- Portion 0 RE, Portion 1 RE, Portion 2, Portion 3 RE, Portion 4, Portion 5; Farm Hou Hou 13 Portion 0; Farm Teriris 142 Portion 0; Farm Onap 143-Portion 0 RE, Portion 1, Portion 2 RE, Portion 3, Portion 4; Farm Kareses 157 Portion 0; Farm Izaks Puts 158 Portion 0; Farm Soutdwaggas 1199 Portion 0; Farm Burtons-Vlei 230- Portion 0 RE, Portion 1; Farm Klercks Goubeep 236 Portion 0; Farm Baiang Putsen 237 Portion 0; Farm Ysis 289- Portion 1 RE, Portion 3; Farm Ramans Kolk 291- Portion 0 RE, Portion 1, Portion 2 RE; Farm Bossie Kom 292- Portion 0 RE, Portion 1; Farm Half Kroon 293- Portion 0 RE, Portion 1, Portion 2; Farm Wolf Kop 294- Portion 0 RE, Portion 1.
Application Area:	177 468 hectares	129 407 hectares	174 126 hectares
Application Area Centre Coordinates:	Latitude: 30° 03' 19.348"S Longitude: 19° 14'41.784"E	Latitude: 30° 03' 40.056"S Longitude: 19° 38'35.874"E	Latitude: 29° 48' 49.922" S Longitude: 19° 44' 48.321" E
Location:	The area is located approximately 75 to 120 kilometers South East of the town of Aggeneys and 130 kilometers East South East of the town of Springbok, Calvinia District, Northern Cape Province.	The area is located approximately 100 to 130 kilometers South East of the town of Aggeneys and 175 kilometers East South East of the town of Springbok, Calvinia District, Northern Cape Province.	The area is located approximately 114 kilometers South East of the town of Aggeneys and 200 kilometers East of the town of Springbok, Calvinia and Kenhardt District, Northern Cape Province.
Local Municipalities:	Khai Ma Local Municipality (Ward 4)	Khai Ma Local Municipality (Ward 4) Hantam Local Municipality (Ward 3)	Khai Ma Local Municipality (Ward 4) Hantam Local Municipality (Ward 3) Kai !Garib Local Municipality (Ward 9)
EIMS Reference Number:	1304-1	1304-2	1304-3
DMR Reference Number:	NC30/5/1/1/2/12388PR	NC30/5/1/1/2/12389PR	NC30/5/1/1/2/12390PR
EIMS Contact Details	<b>Environmental Impact Management Services (Pty) Ltd (EIMS)</b> P.O. Box 19731, Tecoma, 5214 Phone: 043 722-7572 / Fax: 086 571 9047 Contact: GP Kriel Email: gifkop@eims.co.za	<b>Environmental Impact Management Services (Pty) Ltd (EIMS)</b> P.O. Box 19731, Tecoma, 5214 Phone: 043 722-7572 / Fax: 086 571 9047 Contact: GP Kriel Email: jaagersplaats@eims.co.za	<b>Environmental Impact Management Services (Pty) Ltd (EIMS)</b> P.O. Box 19731, Tecoma, 5214 Phone: 043 722-7572 / Fax: 086 571 9047 Contact: GP Kriel Email: witputs@eims.co.za

The following NEMA listed activities have been applied for to the Competent Authority, the Department of Mineral Resources, for these applications:

Listing Notice 1 (GNR 983) Activity 20: Activities directly related to prospecting of a mineral resource, including the operation of that activity which requires a prospecting right in terms of section 16 of the Mineral and Petroleum Resources Development Act, 2002 (Act No. 28 of 2002), including associated infrastructure, structures and earthworks, directly related to prospecting of a mineral resource.

Listing Notice 1 (GNR 983) Activity 27: The clearance of an area of 1 hectares or more, but less than 20 hectares of indigenous vegetation.

Listing Notice 3 (GNR 985) Activity 12 (g) (ii): The clearance of an area of 300 square metres or more of indigenous vegetation within critical biodiversity areas identified in bioregional plans.

#### Date of Placement:

19 August 2019

#### Registration and Comment:

Interested and Affected Parties (I&AP's) are hereby provided with an opportunity to register and comment on the proposed activity and application. In order to ensure that you are identified and registered as an interested and affected party (I&AP) please submit your name, contact details and the reason for your interest, in writing or telephonically, to Environmental Impact Management Services (Pty) Ltd. Please note that only registered I&AP's will be included in future correspondence regarding this project. Please submit any queries, comments, concerns or issues (including the reference number applicable to the application) to the contact details provided above.

