

Site Notice:

**OMGEWINGSKENNISGEWING: PROSPEKTEERREG AANSOEK**

Kennis geskied hiermee in terme van Artikel 16 van die Minerale en Petroleum Hulpbron Ontwikkelingswet (Wet No. 28 van 2002) (MPRDA), en Hoofstuk 6 van die Regulasies oor Omgewingsimpakbeoordeling, 2014, uitgevaardig kragtens die Nasionale Wet op Omgewingsbestuur (Wet 107 van 1998, soos gewysig) (NEMA) vir 'n aansoek tot 'n Prospekterreg en Omgewingsmagtiging.

**Aard van Aktiwiteite:**

Black Mountain Mining (Edms) Bpk, het 'n aansoek vir 'n Prospekterreg ingedien om te bepaal of ekonomiese lewensvatbare minerale bronne van ysterhoudende en basismetale Koper, Yster, Lood, sink, Mangaan, Nikkel, Molibdeen, Goud en Silwer en alle verwante metale en minerale in die aansoek area voorkom. Beide nie-inndringende en indringende prospekteringsmetodes sal toegepas word.

Die volgende NEMA-gelyste aktiwiteite word ingesluit by hierdie aansoek aan die bevoegde owerheid, die Departement van Minerale Hulpbronne: Kennisgewing 1 (GNR 983) Aktiwiteit 20: Aktiwiteite wat direk verband hou met prospektering van minerale hulpbronne, insluitend die werking van daardie aktiwiteit van 'n prospekterreg in terme van Artikel 16 van die MPRDA, insluitend gepaardgaande infrastruktuur, strukture en grondwerke wat direk verband hou met prospektering van 'n minerale hulpbron.

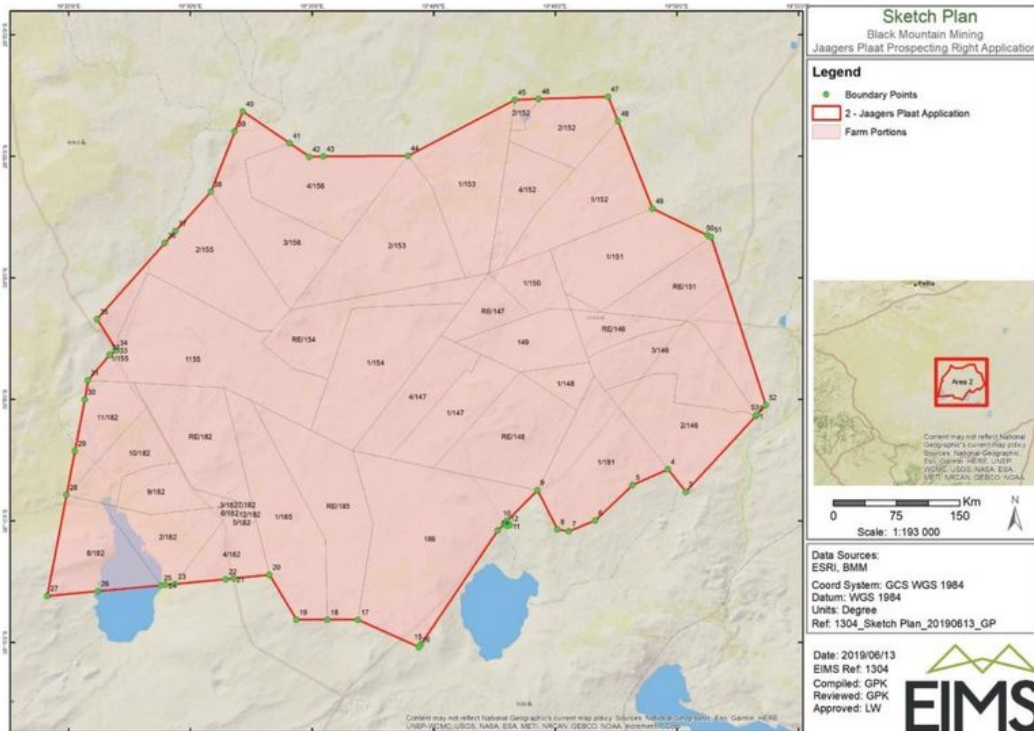
Kennisgewing 1 (GNR 983) Aktiwiteit 27: Die opruiming van 'n oppervlakte van 1 hektaar of meer, maar minder as 20 hektaar inheemse plantegroei. Kennisgewing 3 (GNR 985) Aktiwiteit 12 g ii: Die verwydering van 300 vierkante meter of meer inheemse plantegroei behalwe waar sulke verwydering benodig word vir onderhoud doeleindes soos uitgeset in 'n onderhoudsbestuursplan. In die Noord-Kaap: Binne kritiese biodiversiteitsareas geïdentifiseer in biostreeksplanne.

**Ligging**

Die voorgestelde prospektering gebied is ongeveer 100 tot 130 kilometers Suid oos van die dorp Aggeneys en 175 kilometers Oos Suid oos van die dorp Springbok, Calvinia Distrik, Noord-Kaap Provinsie. Die eiendomme wat in hierdie kennis geelys word, kan verander na die aanvaarding van die Prospekterreg- aansoek deur die DMR. Indien die aansoekarea verander, sal die opgedateerde eiendomme in die konsep Basiese Ewalueringsverslag voorsien word wat beskikbaar sal wees vir publieke kommentaar.

**Eiendomme:**

Plaas Weltevreden 146- Gedeelte 0 RE, Gedeelte 2, Gedeelte 3; Plaas Klein Brand Pens 147- Gedeelte 0 RE, Gedeelte 1 RE, Gedeelte 4; Plaas Lemoendoom 148- Gedeelte 0 RE, Gedeelte 1; Plaas Blouputs 149 Gedeelte 0; Plaas Groot Brand Pens 150 Gedeelte 1 RE; Plaas Granaat Bosch Kolk 151- Gedeelte 0 RE, Gedeelte 1; Plaas Abrahams Kop 152- Gedeelte 1, Gedeelte 2, Gedeelte 4; Plaas Nutiep 153- Gedeelte 1, Gedeelte 2; Plaas Jaegers Plaas 154- Gedeelte 0 RE, Gedeelte 1; Plaas Groot Zevenfontein East 155- Gedeelte 1, Gedeelte 2; Plaas Abiquas Kolk Oost 156- Gedeelte 3 RE, Gedeelte 4; Plaas Dik Pens 182- Gedeelte 0 RE, Gedeelte 2 RE, Gedeelte 3, Gedeelte 4, Gedeelte 5, Gedeelte 6, Gedeelte 7, Gedeelte 8, Gedeelte 9, Gedeelte 10, Gedeelte 11, Gedeelte 12; Plaas Water Kuil 185- Gedeelte 0 RE, Gedeelte 1; Plaas Dwaggas West 186 Gedeelte 0; Plaas Dwaggas Oost 190 Gedeelte 1; Plaas Hyes 191 Gedeelte 1; Plaas Blouwei 1155 Gedeelte 0.



**Aansoek area grootte**

Die area grootte is 129 407 hektaar

**EIMS Verwysingsnommer:**

1304-2

**DMR Verwysingsnommer:**

NC30/5/1/11/2/12389PR

**Datum van Kennisgewing plasing:**

25 Julie 2019

**Registrasie en Kommentaar:**

Belanghebbende en Geaffekteerde Partye (B&GPe) word hiermee 'n geleentheid voorsien om te registreer en kommentaar te lewer op die voorgestelde aktiwiteite. Ten einde te verseker dat u geregistreer is as 'n B&GP, verstrek asseblief u naam, kontakbesonderhede en rede vir belangstelling, skriftelik of telefonies, aan Environmental Impact Management Services (Edms) Bpk. Let asseblief daarop dat slegs geregistreerde B&GPe ingesluit sal word by toekomstige korrespondensie met betrekking tot hierdie projek. Stuur asseblief enige navrae, kommentaar, knelpunte of voorstelle (insluitend die verwysingsnommer 1304-2) na:

**Environmental Impact Management Services (Pty) Ltd (EIMS)**

Posbus 19731, Tecoma, 5214  
 Telephone: 043 722-7572 / Faks: 086 571 9047  
 Kontakpersoon: GP Kriel  
 Epos: jaegersplaat@eims.co.za

### ENVIRONMENTAL NOTIFICATION: PROSPECTING RIGHT APPLICATION

Notice is given in terms of Section 16 of the Mineral and Petroleum Resources Development Act, 2002 (Act No. 28 of 2002) (MPRDA), and Chapter 6 of the Environmental Impact Assessment Regulations, 2014 promulgated under the National Environmental Management Act (Act 107 of 1998) (NEMA, as amended), of application for individual prospecting right applications and Environmental Authorisations.

#### Nature of Activity:

The applicant, Black Mountain Mining (Pty) Ltd, is applying for individual prospecting right applications in order to ascertain if economically viable mineral deposits exist within the application area for the following: Copper, Iron, Lead, Zinc, Manganese, Nickel, Molybdenum, Gold and Silver and all associated metals and minerals. Both non-invasive and invasive prospecting techniques will be utilized.

The following NEMA listed activities have been applied for to the Competent Authority, the Department of Mineral Resources, for this application:

Listing Notice 1 (GNR 983) Activity 20: Activities directly related to prospecting of a mineral resource, including the operation of that activity which requires a prospecting right in terms of section 16 of the Mineral and Petroleum Resources Development Act, 2002 (Act No. 28 of 2002), including associated infrastructure, structures and earthworks, directly related to prospecting of a mineral resource.

Listing Notice 1 (GNR 983) Activity 27: The clearance of an area of 1 hectares or more, but less than 20 hectares of indigenous vegetation.

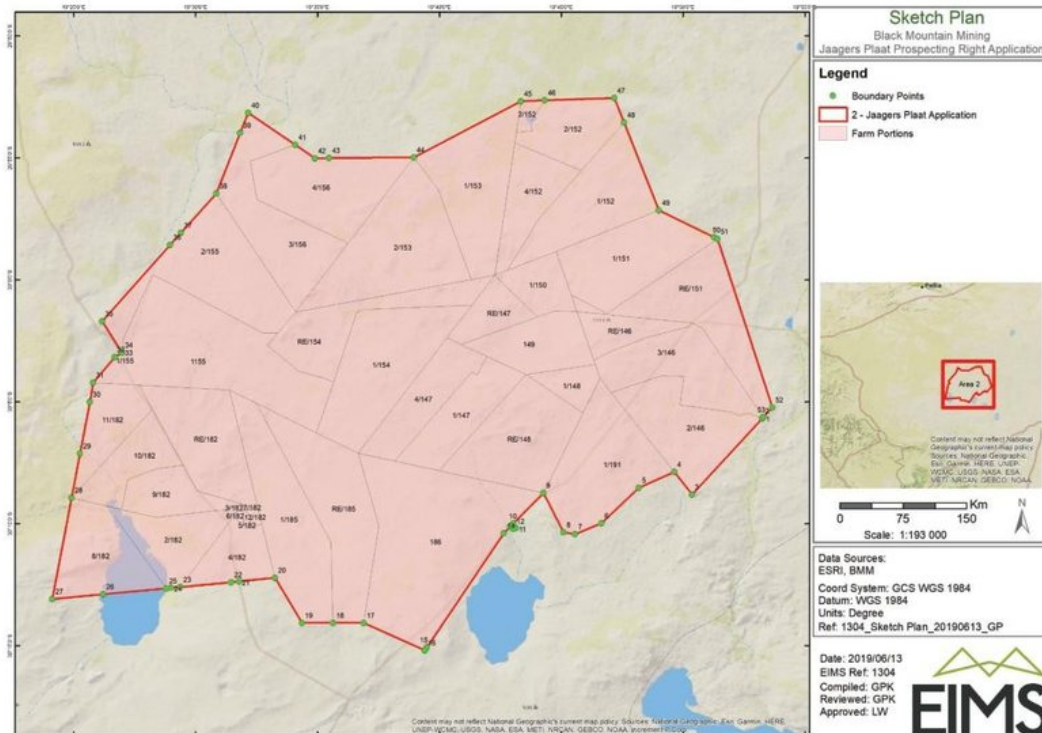
Listing Notice 3 (GNR 985) Activity 12 (g) (ii): The clearance of an area of 300 square metres or more of indigenous vegetation within critical biodiversity areas identified in bioregional plans.

#### Location:

The area is located approximately 100 to 130 kilometers South East of the town of Aggeneyns and 175 kilometers East South East of the town of Springbok, Calvinia District, Northern Cape Province. The application area depicted below may change after acceptance of the Prospecting Right Application by the DMR. Should the application area change, the updated properties will be provided in the draft Basic Assessment Report which will be available for public comment.

#### Farm Portions:

Farm Weltevreden 146-Portion 0 RE, Portion 2, Portion 3; Farm Klein Brand Pens 147- Portion 0 RE, Portion 1 RE, Portion 4; Farm Lemoendoorn 148- Portion 0 RE, Portion 1; Farm Blouputs 149 Portion 0; Farm Groot Brand Pens 150 Portion 1 RE; Farm Granaat Bosch Kolk 151- Portion 0 RE, Portion 1; Farm Abrahams Kop 152- Portion 1, Portion 2, Portion 4; Farm Nutiep 153- Portion 1, Portion 2; Farm Jaegers Plaat 154- Portion 0 RE, Portion 1; Farm Groot Zevenfontein East 155- Portion 1, Portion 2; Farm Abiquas Kolk Oost 156- Portion 3 RE, Portion 4; Farm Dik Pens 182- Portion 0 RE, Portion 2 RE, Portion 3, Portion 4, Portion 5, Portion 6, Portion 7, Portion 8, Portion 9, Portion 10, Portion 11, Portion 12; Farm Water Kuil 185- Portion 0 RE, Portion 1; Farm Dwaggas West 186 Portion 0; Farm Dwaggas Oost 190 Portion 1; Farm Hyes 191 Portion 1; Farm Blouwei 1155 Portion 0.



#### Application Area Size:

Jaegers Plaat covers an area of about 129 407 hectares

#### EIMS Reference Number:

1304-2

#### DMR Reference Number:

NC305/1/12/12389PR

#### Date of Placement:

25 July 2019

#### Registration and Comment:

Interested and Affected Parties (I&AP's) are hereby provided with an opportunity to register and comment on the proposed activity and application. In order to ensure that you are identified and registered as an interested and affected party (I&AP) please submit your name, contact details and the reason for your interest, in writing or telephonically, to Environmental Impact Management Services (Pty) Ltd. Please note that only registered I&AP's will be included in future correspondence regarding this project. Please submit any queries, comments, concerns or issues (including the reference number 1304-2) to:

#### Environmental Impact Management Services (Pty) Ltd (EIMS)

P.O. Box 19731, Tecoma, 5214  
Phone: 043 722-7572 / Fax: 086 571 9047  
Contact: GP Kriel  
Email: jaegersplaat@eims.co.za

Locality Map:



Site Notice: 24/07/2019 10:26:24; GPS Coordinates: -29.982808, 19.412960



SN01

Site Notice: 24/07/2019 10:50:16; GPS Coordinates: -30.029992, 19.431024



SN02

Site Notice: 24/07/2019 11:36:21; GPS Coordinates: -30.163194, 19.518188



SN03

Site Notice: 24/07/2019 11:58:37; GPS Coordinates: -30.163113, 19.518247



SN04

Site Notice: 24/07/2019 12:19:24; GPS Coordinates: -30.286066, 19.603594



SN05

Site Notice: 24/07/2019 13:45:16; GPS Coordinates: -30.109055, 19.777379



SN06

Site Notice: 24/07/2019 14:11:12; GPS Coordinates: -30.029249, 19.843199



SN07

Site Notice: 24/07/2019 15:36:18; GPS Coordinates: -29.977258, 19.881007



SN08

Site Notice: 24/07/2019 15:47:56; GPS Coordinates: -29.923400, 19.884737



SN09

Site Notice: 24/07/2019 15:57:36; GPS Coordinates: -29.870192, 19.895800



SN10

Handout: 24/07/2019 11:20:40; GPS Coordinates: -30.029990, 19.431027





**BID01**

**Handout: 24/07/2019 11:25:05; GPS Coordinates: -30.163302, 19.517961**



**BID02**

**Handout: 24/07/2019 12:40:35; GPS Coordinates: -30.206856, 19.684528**



**BID03**

**Handout: 24/07/2019 12:50:35; GPS Coordinates: -30.167951, 19.710735**



**BID04**

**Handout: 24/07/2019 13:55:09; GPS Coordinates: -30.068140, 19.809909**



BID05

Handout: 24/07/2019 14:02:09; GPS Coordinates: -30.029896, 19.838131



BID06

Handout: 24/07/2019 14:18:06; GPS Coordinates: -30.029824, 19.843530



BID07

# GENERAL NOTICES • ALGEMENE KENNISGEWINGS

## NOTICE 83 OF 2019

### ENVIRONMENTAL NOTIFICATION: PROSPECTING RIGHT APPLICATION

Notice is given in terms of Section 16 of the Mineral and Petroleum Resources Development Act, 2002 (Act No. 28 of 2002) (MPRDA), and Chapter 6 of the Environmental Impact Assessment Regulations, 2014 promulgated under the National Environmental Management Act (Act 107 of 1998) (NEMA, as amended), of application for individual prospecting right applications and Environmental Authorisations.

**Nature of Activity:**

The applicant, Black Mountain Mining (Pty) Ltd, is applying for individual prospecting right applications in order to ascertain if economically viable mineral deposits exist within the application areas as listed below. Both non-invasive and invasive prospecting techniques will be utilized and will be applied for each of the applications:

Application Name	Area 1- Gifkop	Area 2- Jaagers Plaats	Area 3- Wit Puts
Commodities:	Ferrous & base metals (Copper, Iron, Lead, Zinc, Manganese, Nickel, Molybdenum) and all associated metals and minerals, precious metals (Gold, Silver) and all associated metals and minerals	Ferrous & base metals (Copper, Iron, Lead, Zinc, Manganese, Nickel, Molybdenum) and all associated metals and minerals, precious metals (Gold, Silver) and all associated metals and minerals	Ferrous & base metals (Copper, Iron, Lead, Zinc, Manganese, Nickel, Molybdenum) and all associated metals and minerals, precious metals (Gold, Silver) and all associated metals and minerals
Property details*  The properties listed in this table may change after acceptance of the Prospecting Right Applications by the DMR. Should the application area change, the updated properties will be provided in the draft Basic Assessment Report which will be available for public comment.	Farm Doels Vley 161 Portion 1; Farm Wiel Kolk 162 Portion 0; Farm Gifkop 166- Portion 0 RE, Portion 1, Portion 2, Portion 3 RE, Portion 4 RE, Portion 5 RE, Portion 6, Portion 7, Portion 8, Portion 9, Portion 10, Portion 11, Portion 12; Farm Paul Se Vley 167 Portion 0; Farm Tweeling 168- Portion 0, Portion 1; Farm Annex Koffie Meul 169 Portion 1; Farm Koffie Meul 170 Portion 0 RE, Portion 1; Farm Kapsvlei 174- Portion 0 RE, Portion 1, Portion 2, Portion 3 RE, Portion 4, Portion 5, Portion 6, Portion 7, Portion 8; Farm Blaauw Pan 175 Portion 0; Farm Hoepel 180- Portion 0 RE, Portion 1, Portion 2; Farm Groot Zevenfontein West 181 Portion 0; Farm Lospers Plaats 218 Portion 0 RE, Portion 0 RE, Portion 1.	Farm Weltevreden 146-Portion 0 RE, Portion 2, Portion 3; Farm Klein Brand Pens 147- Portion 0 RE, Portion 1 RE, Portion 4; Farm Lemoendoorn 148- Portion 0 RE, Portion 1; Farm Blouputs 149 Portion 0; Farm Groot Brand Pens 150 Portion 1 RE; Farm Granaat Bosch Kolk 151- Portion 0 RE, Portion 1; Farm Abrahams Kop 152- Portion 1, Portion 2, Portion 2, Portion 4; Farm Nutiep 153- Portion 1, Portion 2; Farm Jaagers Plaats 154- Portion 0 RE, Portion 1; Farm Groot Zevenfontein East 155- Portion 1, Portion 2; Farm Abiquas Kolk Oost 156- Portion 3 RE, Portion 4; Farm Dik Pens 182- Portion 0 RE, Portion 2 RE, Portion 3, Portion 4, Portion 5, Portion 6, Portion 7, Portion 8, Portion 9, Portion 10, Portion 11, Portion 12; Farm Water Kuil 185- Portion 0 RE, Portion 1; Farm Dwaggas West 186 Portion 0; Farm Dwaggas Oost 190 Portion 1; Farm Hyes 191 Portion 1; Farm Blouville 1155 Portion 0.	Farm Nieuw Jaars 6- Portion 0 RE, Portion 1 RE, Portion 2; Farm Koebas Hoek 7- Portion 0 RE, Portion 1 RE, Portion 2; Farm Wit Puts 9 Portion 0; Farm Boks Kolk 10 Portion 2; Farm Zout Dwaggas 11 Portion 0 RE; Farm Gurreys 12- Portion 0 RE, Portion 1 RE, Portion 2, Portion 3 RE, Portion 4, Portion 5; Farm Hou Hou 13 Portion 0; Farm Teriris 142 Portion 0; Farm Onap 143- Portion 0 RE, Portion 1, Portion 2 RE, Portion 3, Portion 4; Farm Kareses 157 Portion 0; Farm Izaks Puts 158 Portion 0; Farm Soutdwaggas 1199 Portion 0; Farm Burtons- Vlei 230- Portion 0 RE, Portion 1; Farm Klercks Goubeep 236 Portion 0; Farm Baiang Putsen 237 Portion 0; Farm Ysis 289- Portion 1 RE, Portion 3; Farm Ramans Kolk 291- Portion 0 RE, Portion 1, Portion 2 RE; Farm Bossie Kom 292- Portion 0 RE, Portion 1; Farm Half Kroon 293- Portion 0 RE, Portion 1, Portion 2; Farm Wolf Kop 294- Portion 0 RE, Portion 1.
Application Area:	177 468 hectares	129 407 hectares	174 126 hectares
Application Area Centre Coordinates:	Latitude: 30° 03' 19.348"S Longitude: 19° 14'41.784"E	Latitude: 30° 03' 40.056"S Longitude: 19° 38'35.874"E	Latitude: 29° 48' 49.922" S Longitude: 19° 44' 48.321" E
Location:	The area is located approximately 75 to 120 kilometers South East of the town of Aggeneys and 130 kilometers East South East of the town of Springbok, Calvinia District, Northern Cape Province.	The area is located approximately 100 to 130 kilometers South East of the town of Aggeneys and 175 kilometers East South East of the town of Springbok, Calvinia District, Northern Cape Province.	The area is located approximately 114 kilometers South East of the town of Aggeneys and 200 kilometers East of the town of Springbok, Calvinia and Kenhardt District, Northern Cape Province.
Local Municipalities:	Khai Ma Local Municipality (Ward 4)	Khai Ma Local Municipality (Ward 4) Hantam Local Municipality (Ward 3)	Khai Ma Local Municipality (Ward 4) Hantam Local Municipality (Ward 3) Kai !Garib Local Municipality (Ward 9)
EIMS Reference Number:	1304-1	1304-2	1304-3
DMR Reference Number:	NC30/5/1/1/2/12388PR	NC30/5/1/1/2/12389PR	NC30/5/1/1/2/12390PR
EIMS Contact Details	<b>Environmental Impact Management Services (Pty) Ltd (EIMS)</b> P.O. Box 19731, Tecoma, 5214 Phone: 043 722-7572 / Fax: 086 571 9047 Contact: GP Kriel Email: gifkop@eims.co.za	<b>Environmental Impact Management Services (Pty) Ltd (EIMS)</b> P.O. Box 19731, Tecoma, 5214 Phone: 043 722-7572 / Fax: 086 571 9047 Contact: GP Kriel Email: jaagersplaats@eims.co.za	<b>Environmental Impact Management Services (Pty) Ltd (EIMS)</b> P.O. Box 19731, Tecoma, 5214 Phone: 043 722-7572 / Fax: 086 571 9047 Contact: GP Kriel Email: witputs@eims.co.za

The following NEMA listed activities have been applied for to the Competent Authority, the Department of Mineral Resources, for these applications:

Listing Notice 1 (GNR 983) Activity 20: Activities directly related to prospecting of a mineral resource, including the operation of that activity which requires a prospecting right in terms of section 16 of the Mineral and Petroleum Resources Development Act, 2002 (Act No. 28 of 2002), including associated infrastructure, structures and earthworks, directly related to prospecting of a mineral resource.

Listing Notice 1 (GNR 983) Activity 27: The clearance of an area of 1 hectares or more, but less than 20 hectares of indigenous vegetation.

Listing Notice 3 (GNR 985) Activity 12 (g) (ii): The clearance of an area of 300 square metres or more of indigenous vegetation within critical biodiversity areas identified in bioregional plans.

**Date of Placement:**

19 August 2019

**Registration and Comment:**

Interested and Affected Parties (I&AP's) are hereby provided with an opportunity to register and comment on the proposed activity and application. In order to ensure that you are identified and registered as an interested and affected party (I&AP) please submit your name, contact details and the reason for your interest, in writing or telephonically, to Environmental Impact Management Services (Pty) Ltd. Please note that only registered I&AP's will be included in future correspondence regarding this project. Please submit any queries, comments, concerns or issues (including the reference number applicable to the application) to the contact details provided above.

# Frank Biggs se Mandeladag 2019

## GEMSBOK-LOUISVALEDORP: Die Frank Biggs Intermediêre Skool het 'n bedrywige en geseënde Mandeladag agter die rug.

Die Nasionale Vervolgingsgesag (NVG) in die Upington Landroskantoor het uitgereik na die meisies van Frank Biggs Intermediêre Skool deur die nood van meisies te verlig in die skenking van sanitêre doekies as deel van hul sosiale verantwoordelikheid op Mandeladag 2019.

“Ons was aangenaam verras deur die goeie gebaar van die Nasionale Vervolgingsgesag (NVG), wat slegs gesien word as 'n instansie wat oortreders straf, maar ook die behoefte sien wat in landelike gebiede heers, deur sanitêre doekies aan ons skool se leerders te kon verskaf. Ons is dankbaar daarvoor.” Aldus Mnr. Wally Cloete (Prinsipaal van Frank Biggs I/S).

Werkers van Pioneersfoods (SAD – Onverwerk Nagskof) het elkeen uit



hulle eie sakke skoolskoene aan behoeftige leerders van Frank Biggs Intermediêre Skool geskenk op Mandeladag 2019.

Die projek staan onder leiding van Mnr. Hermanus Pofadder (Skofvoorman) by die SAD in Louisvaleweg buite Upington.

“Ons het die pleidooi van die kind gehoor en ons hande in eie boesem gesteeek en so 'n glimlag op 'n kind se gesig te bring as

deel van Mandelamaand,” aldus Mnr. Hermanus Pofadder.

Die skool het ook hulle dank uitgespreek teenoor lede in die gemeenskap, omdat kinders met stukke skoene en soms tekkies die koue winter trotseer.

Die skool hoop dat ander instansies hulle voorbeeld volg en van die baie behoeftes aan te kan spreek.

Die skool toer ook vir die eerste keer na Lambertsbaai vanaf 25-28 Julie 2019 en borge en donasies is baie welkom, asook ons Graad 8 Toer gedurende September 2019.

*Die tien behoeftige leerders met werkers van Pioneersfoods by SAD tydens die oorhandiging van skoolskoene op Mandeladag 2019 by die skool.*



Me. Yolanda Snyder (Koördineer van die projek), Mev. Anna Isaacs, Mnr. Nathan Sass, Me. Thea Engelbrecht, Joane Kennedy en Mnr. Wally Cloete (Prinsipaal)

## LCW ondersteun Upington APD



“A winner is a dreamer who never gives up.” – Nelson Mandela. Lange Carr & Wessels vat hande met APD. Hulle het lekker partytjie gehou en kon 350 volwasse doeke skenk.

### OMGEWINGSKENNISGEWING: PROSPEKTEERREG AANSOEK

Kennis geskied hiermee in terme van Artikel 16 van die Minerale en Petroleum Hulpbron Ontwikkelings Wet, 2002 (Wet No. 28 van 2002) (MPRDA), en Hoofstuk 6 van die Regulasies oor Omgewingsimpakbepaling, 2014, uitgevaardig kragtens die Nasionale Wet op Omgewingsbestuur (NEMA) (soos gewysig) vir aansoek vir Prospekterreg en Omgewingsmagtiging (OM).

#### Aard van Aktiwiteite:

Die aansoeker, Black Mountain Mining (Edms) Bpk, doen aansoek vir individuele prospekterrege om vas te stel of daar ekonomies lewensvatbare mineraalafsettings binne die aansoekgebiede bestaan. Beide nie-inldringende en inldringende prospektering tegnieke sal toegepas word, vir die areas soos hieronder gelys:

Aansoek Naam:	Area 4 - Gifkop	Area 5 - Jaegers Plaats	Area 6 - Wit Puts
Kommoditeite:	Ysterhoudende en basismetale (Koper, Yster Lood, Sink, Mangaan, Nikkel en Molibdeen) en alle verwante metale en minerale. Edelmetale (gouderts, silwererts) en alle verwante metale en minerale	Ysterhoudende en basismetale (Koper, Yster Lood, Sink, Mangaan, Nikkel en Molibdeen) en alle verwante metale en minerale. Edelmetale (gouderts, silwererts) en alle verwante metale en minerale	Ysterhoudende en basismetale (Koper, Yster Lood, Sink, Mangaan, Nikkel en Molibdeen) en alle verwante metale en minerale. Edelmetale (gouderts, silwererts) en alle verwante metale en minerale
Eiendom besonderhede* Die eiendomme wat in hierdie tabel gelys word, kan verander na die aanvaarding van die Prospekterreg-aansoek deur die DMR. Indien die aansoek area verander, sal die opgedateerde eiendomme in die konsep Basiese Evalueringsverslag voorsien word wat beskikbaar sal wees vir publieke kommentaar.	Plaas Doels Vley 161 Gedeelte 1; Plaas Wiel Kolk 162 Gedeelte 0; Plaas Gifkop 166- Gedeelte 0 RE, Gedeelte 1, Gedeelte 2, Gedeelte 3 RE, Gedeelte 4 RE, Gedeelte 5 RE, Gedeelte 6, Gedeelte 7, Gedeelte 8, Gedeelte 9, Gedeelte 10, Gedeelte 11, Gedeelte 12; Plaas Paul Se Vley 167 Gedeelte 0; Plaas Tweeling 168- Gedeelte 0, Gedeelte 1; Plaas Annex Koffie Meul 169 Gedeelte 1; Plaas Koffie Meul 170 Gedeelte 0 RE, Gedeelte 1; Plaas Kapsvlei 174- Gedeelte 0 RE, Gedeelte 1, Gedeelte 2, Gedeelte 3 RE, Gedeelte 4, Gedeelte 5, Gedeelte 6, Gedeelte 7, Gedeelte 8; Plaas Blaauw Pan 175 Gedeelte 0; Plaas Hoepel 180- Gedeelte 0 RE, Gedeelte 1, Gedeelte 2; Plaas Groot Zevenfontein West 181 Gedeelte 0; Plaas Lospers Plaats 218 Gedeelte 0 RE, Gedeelte 0 RE, Gedeelte 1.	Plaas Weltevreden 146-Gedeelte 0 RE, Gedeelte 2, Gedeelte 3; Plaas Klein Brand Pens 147- Gedeelte 0 RE, Gedeelte 1 RE, Gedeelte 4; Plaas Lemoendoorn 148- Gedeelte 0 RE, Gedeelte 1; Plaas Blouputs 149 Gedeelte 0; Plaas Groot Brand Pens 150 Gedeelte 1 RE; Plaas Granaat Bosch Kolk 151- Gedeelte 0 RE, Gedeelte 1; Plaas Abrahams Kop 152- Gedeelte 1, Gedeelte 2, Gedeelte 2, Gedeelte 4; Plaas Nutiep 153- Gedeelte 1, Gedeelte 2; Plaas Jaegers Plaats 154- Gedeelte 0 RE, Gedeelte 1; Plaas Groot Zevenfontein East 155- Gedeelte 1, Gedeelte 2; Plaas Abiquas Kolk Oost 156- Gedeelte 3 RE, Gedeelte 4; Plaas Dik Pens 182- Gedeelte 0 RE, Gedeelte 2 RE, Gedeelte 3, Gedeelte 4, Gedeelte 5, Gedeelte 6, Gedeelte 7, Gedeelte 8, Gedeelte 9, Gedeelte 10, Gedeelte 11, Gedeelte 12; Plaas Water Kuil 185- Gedeelte 0 RE, Gedeelte 1; Plaas Dwaggas West 186 Gedeelte 0; Plaas Dwaggas Oost 190 Gedeelte 1; Plaas Hyes 191 Gedeelte 1; Plaas Blouvlies 1155 Gedeelte 0	Plaas Nieuw Jaars 6- Gedeelte 0 RE, Gedeelte 1 RE, Gedeelte 2; Plaas Koebas Hoek 7- Gedeelte 0 RE, Gedeelte 0 RE, Gedeelte 2; Plaas Wit Puts 9 Gedeelte 0; Plaas Boks Kolk 10 Gedeelte 2; Plaas Zout Dwaggas 11 Gedeelte 0 RE; Plaas Gurreys 12- Gedeelte 0 RE, Gedeelte 1 RE, Gedeelte 2, Gedeelte 3 RE, Gedeelte 4, Gedeelte 5; Plaas Karesse 157 Gedeelte 0; Plaas Izaks Puts 158 Gedeelte 0; Plaas Soutdwaggas 1199 Gedeelte 0; Plaas Burtons-Vlei 230- Gedeelte 0 RE, Gedeelte 1; Plaas Klercks Goubeep 236 Gedeelte 0; Plaas Baiang Putsen 237 Gedeelte 0; Plaas Ysis 289- Gedeelte 1 RE, Gedeelte 3; Plaas Ramans Kolk 291- Gedeelte 0 RE, Gedeelte 1, Gedeelte 2 RE; Plaas Bossie Kom 292- Gedeelte 0 RE, Gedeelte 1; Plaas Half Kroon 293- Gedeelte 0 RE, Gedeelte 1, Gedeelte 2; Plaas Wolf Kop 294-Gedeelte 0 RE, Gedeelte 1
Toepassingsgebied	177 468 hektaar	129 047 hektaar	174 126 hektaar
Aansoek Area Sentrum Koördinate	Breedtegraad: 30° 03' 19.348"S Lengtegraad: 19° 14'41.784"E	Breedtegraad: 30° 03' 40.056"S Lengtegraad: 19° 38'35.874"E	Breedtegraad: : 29° 48' 49.922" S Lengtegraad: : 19° 44' 48.321" E
Plek:	Die gebied is ongeveer 75 tot 120 kilometers Suid-Oos van die dorp Aggeney en 130 kilometers Oos-Suid-Oos van die dorp Springbok, Calvinia Distrik, Noord-Kaap Provinsie.	Die gebied is ongeveer 100 tot 130 kilometers Suid-Oos van die dorp Aggeney en 175 kilometers Oos-Suid-Oos van die dorp Springbok, Calvinia Distrik, Noord-Kaap Provinsie.	Die gebied is ongeveer 114 kilometers Suid-Oos van die dorp Aggeney en 200 kilometers Oos van die dorp Springbok, Calvinia en Kenhardt Distrik, Noord-Kaap Provinsie.
Plaaslike Munisipaliteite:	Khai Ma Plaaslike Munisipaliteit (Wyk 4)	Khai Ma Plaaslike Munisipaliteit (Wyk 4) Hantam Plaaslike Munisipaliteit (Wyk 3)	Kai Ma Plaaslike Munisipaliteit (Wyk 4) Hantam Plaaslike Munisipaliteit (Wyk 3) Kai !Garib Plaaslike Munisipaliteit (Wyk 9)
EIMS Verwysings-Nommer:	1304-1	1304-2	1304-3
DMR Verwysings-Nommer	NC30/5/1/1/2/12388PR	NC30/5/1/1/2/12389PR	NC30/5/1/1/2/12390PR
EIMS Kontak-besonderhede:	Environmental Impact Management Services (Pty) Ltd (EIMS) Posbus 19731, Tecoma, 5214 Telefoon: 043 722-7572 / Faks: 086 571 9047 Kontakpersoon: GP Kriel Epos: gifkop@eims.co.za	Environmental Impact Management Services (Pty) Ltd (EIMS) Posbus 19731, Tecoma, 5214 Telefoon: 043 722-7572 / Faks: 086 571 9047 Kontakpersoon: GP Kriel Epos: jaegersplaats@eims.co.za	Environmental Impact Management Services (Pty) Ltd (EIMS) Posbus 19731, Tecoma, 5214 Telefoon: 043 722-7572 / Faks: 086 571 9047 Kontakpersoon: GP Kriel Epos: witputs@eims.co.za

Die volgende NEMA-gelyste aktiwiteite word ingesluit by hierdie aansoek, aan die bevoegde owerheid, die Departement van Minerale Hulpbronne:

Kenningsgewing 1 (GNR 983) Aktiwiteit 20: Aktiwiteite wat direk verband hou met prospektering van 'n minerale hulpbron, insluitend die bedryf van daardie aktiwiteit wat 'n prospekterreg ingevolge artikel 16 van die Wet op die Ontwikkeling van Minerale en Petroleumhulpbronne, 2002 (Wet No. 28 van 2002), insluitend geassosieerde infrastruktuur, strukture en grondwerke, wat direk verband hou met die prospektering van 'n minerale hulpbron.

Kenningsgewing 1 (GNR 983) Aktiwiteit 27: Die opruiming van 'n oppervlakte van 1 hektaar of meer, maar minder as 20 hektaar inheemse plantegroei.

Kenningsgewing 3 (GNR 985) Aktiwiteit 12 g ii: Die verwydering van 300 vierkante meter of meer inheemse plantegroei behalwe waar sulke verwydering benodig word vir onderhoud doeleindes soos uitegset in 'n onderhoudsbestuursplan: In die Noord-Kaap: Binne kritiese biodiversiteitsareas geïdentifiseer in biostreeksplanne.

#### Datum van plasing:

25 Julie 2019

#### Registrasie en kommentaar

Belanghebbende en Geaffekteerde Partye (B&GP) word hiermee 'n geleentheid gebied om te registreer en kommentaar te lewer op die voorgestelde aktiwiteit en aansoek. Om te verseker dat u as 'n B&GP geïdentifiseer en geregistreer is, dien asseblief u naam, kontakbesonderhede en die rede vir u belang, skriftelik of telefonies, in by Environmental Impact Management Services (Edms) Bpk. Let asseblief daarop dat slegs geregistreerde B&GP'e ingesluit sal word in toekomstige korrespondensie aangaande hierdie projek. Indien asseblief enige navrae, kommentaar, bekommernisse of kwessies (insluitende die verwysingsnommer van toepassing op die aansoek) aan die kontakbesonderhede soos hierbo gelys.

### ENVIRONMENTAL NOTIFICATION: PROSPECTING RIGHT APPLICATION

Notice is given in terms of Section 16 of the Mineral and Petroleum Resources Development Act, 2002 (Act No. 28 of 2002) (MPRDA), and Chapter 6 of the Environmental Impact Assessment Regulations, 2014 promulgated under the National Environmental Management Act (Act 107 of 1998) (NEMA, as amended), of application for individual prospecting right applications and Environmental Authorisations.

#### Nature of Activity:

The applicant, Black Mountain Mining (Pty) Ltd, is applying for individual prospecting right applications in order to ascertain if economically viable mineral deposits exist within the application areas as listed below. Both non-invasive and invasive prospecting techniques will be utilized and will be applied for each of the applications:

Application Name:	Area 1 - Gifkop	Area 2 - Jaegers Plaats	Area 3 - Wit Puts
Commodities:	Ferrous & base metals (Copper, Iron, Lead, Zinc, Manganese, Nickel, Molybdenum) and all associated metals and minerals, precious metals (Gold, Silver) and all associated metals and minerals	Ferrous & base metals (Copper, Iron, Lead, Zinc, Manganese, Nickel, Molybdenum) and all associated metals and minerals, precious metals (Gold, Silver) and all associated metals and minerals	Ferrous & base metals (Copper, Iron, Lead, Zinc, Manganese, Nickel, Molybdenum) and all associated metals and minerals, precious metals (Gold, Silver) and all associated metals and minerals
Property details* The properties listed in this table may change after acceptance of the Prospecting Right Applications by the DMR. Should the application area change, the updated properties will be provided in the draft Basic Assessment Report which will be available for public comment.	Farm Doels Vley 161 Portion 1; Farm Wiel Kolk 162 Portion 0; Farm Gifkop 166- Portion 0 RE, Portion 1, Portion 2, Portion 3 RE, Portion 4 RE, Portion 5 RE, Portion 6, Portion 7, Portion 8, Portion 9, Portion 10, Portion 11, Portion 12; Farm Paul Se Vley 167 Portion 0; Farm Tweeling 168- Portion 0, Portion 1; Farm Annex Koffie Meul 169 Portion 1; Farm Kapsvlei 174- Portion 0 RE, Portion 1; Farm Koffie Meul 170 Portion 0 RE, Portion 1; Farm Groot Zevenfontein West 181 Portion 0; Farm Hoepel 180- Portion 0 RE, Portion 1; Farm Blaauw Pan 175 Portion 0; Farm Hoepel 180- Portion 0 RE, Portion 1, Portion 2; Farm Groot Zevenfontein West 181 Portion 0; Farm Lospers Plaats 218 Portion 0 RE, Portion 0 RE, Portion 1.	Farm Weltevreden 146-Portion 0 RE, Portion 2, Portion 3; Farm Klein Brand Pens 147- Portion 0 RE, Portion 1 RE, Portion 4; Farm Lemoendoorn 148- Portion 0 RE, Portion 1; Farm Blouputs 149 Portion 0; Farm Groot Brand Pens 150 Portion 1 RE; Farm Granaat Bosch Kolk 151- Portion 0 RE, Portion 1; Farm Abrahams Kop 152- Portion 1, Portion 2, Portion 3, Portion 4; Farm Jaegers Plaats 154- Portion 0 RE, Portion 1; Farm Groot Zevenfontein East 155- Portion 1, Portion 2, Portion 3, Portion 4; Farm Karesse 157 Portion 0; Farm Izaks Puts 158 Portion 0; Farm Soutdwaggas 1199 Portion 0; Farm Burtons-Vlei 230- Portion 0 RE, Portion 1; Farm Klercks Goubeep 236 Portion 0; Farm Baiang Putsen 237 Portion 0; Farm Ysis 289- Portion 1 RE, Gedeelte 3; Plaas Ramans Kolk 291- Gedeelte 0 RE, Gedeelte 1, Gedeelte 2 RE; Plaas Bossie Kom 292- Gedeelte 0 RE, Gedeelte 1; Plaas Half Kroon 293- Gedeelte 0 RE, Portion 1, Portion 2; Plaas Wolf Kop 294- Portion 0 RE, Portion 1.	Farm Nieuw Jaars 6- Portion 0 RE, Portion 1 RE, Portion 2; Farm Koebas Hoek 7- Portion 0 RE, Portion 1 RE, Portion 2; Farm Wit Puts 9 Portion 0; Farm Boks Kolk 10 Portion 2; Farm Zout Dwaggas 11 Portion 0 RE; Farm Gurreys 12- Portion 0 RE, Portion 1 RE, Portion 2, Portion 3 RE, Portion 4, Portion 5; Farm Hou Hou 13 Portion 0; Farm Tennis 142 Portion 0; Farm Onap 143- Portion 0 RE, Portion 1, Portion 2 RE, Portion 3, Portion 4; Farm Karesse 157 Portion 0; Farm Izaks Puts 158 Portion 0; Farm Soutdwaggas 1199 Portion 0; Farm Burtons-Vlei 230- Portion 0 RE, Portion 1; Farm Klercks Goubeep 236 Portion 0; Farm Baiang Putsen 237 Portion 0; Farm Ysis 289- Portion 1 RE, Portion 3; Farm Ramans Kolk 291- Portion 0 RE, Portion 1, Portion 2 RE; Farm Bossie Kom 292- Portion 0 RE, Portion 1; Farm Half Kroon 293- Portion 0 RE, Portion 1, Portion 2; Farm Wolf Kop 294- Portion 0 RE, Portion 1.
Application Area:	177 468 hectares	129 047 hectares	174 126 hectares
Application Area Centre coordinates	Latitude: 30° 03' 19.348"S Longitude: 19° 14'41.784"E	Latitude: 30° 03' 40.056"S Longitude: 19° 38'35.874"E	Latitude: 29° 48' 49.922" S Longitude: : 19° 44' 48.321" E
Location:	The area is located approximately 75 to 120 kilometers South East of the town of Aggeney and 130 kilometers East South East of the town of Springbok, Calvinia District, Northern Cape Province.	The area is located approximately 100 to 130 kilometers South East of the town of Aggeney and 175 kilometers East South East of the town of Springbok, Calvinia District, Northern Cape Province.	The area is located approximately 114 kilometers South East of the town of Aggeney and 200 kilometers East of the town of Springbok, Calvinia and Kenhardt District, Northern Cape Province.
Local Municipalities:	Khai Ma Local Municipality (Ward 4)	Khai Ma Local Municipality (Ward 4) Hantam Local Municipality (Ward 3)	Khai Ma Local Municipality (Ward 4) Hantam Local Municipality (Ward 3) Kai !Garib Local Municipality (Ward 9)
EIMS Reference Number:	1304-1	1304-2	1304-3
DMR Reference Number:	NC30/5/1/1/2/12388PR	NC30/5/1/1/2/12389PR	NC30/5/1/1/2/12390PR
EIMS Contact details:	Environmental Impact Management Services (Pty) Ltd (EIMS) P.O. Box 19731, Tecoma, 5214 Phone: 043 722-7572 / Fax: 086 571 9047 Contact: GP Kriel Email: gifkop@eims.co.za	Environmental Impact Management Services (Pty) Ltd (EIMS) P.O. Box 19731, Tecoma, 5214 Phone: 043 722-7572 / Fax: 086 571 9047 Contact: GP Kriel Email: jaegersplaats@eims.co.za	Environmental Impact Management Services (Pty) Ltd (EIMS) P.O. Box 19731, Tecoma, 5214 Phone: 043 722-7572 / Fax: 086 571 9047 Contact: GP Kriel Email: witputs@eims.co.za

The following NEMA listed activities have been applied for to the Competent Authority, the Department of Mineral Resources, for these applications:

Listing Notice 1 (GNR 983) Activity 20: Activities directly related to prospecting of a mineral resource, including the operation of that activity which requires a prospecting right in terms of section 16 of the Mineral and Petroleum Resources Development Act, 2002 (Act No. 28 of 2002), including associated infrastructure, structures and earthworks, directly related to prospecting of a mineral resource.

Listing Notice 1 (GNR 983) Activity 27: The clearance of an area of 1 hectares or more, but less than 20 hectares of indigenous vegetation.

Listing Notice 3 (GNR 985) Activity 12 (g) (ii): The clearance of an area of 300 square metres or more of indigenous vegetation within critical biodiversity areas identified in bioregional plans.

#### Date of Placement:

25 July 2019

#### Registration and Comment:

Interested and Affected Parties (I&AP) are hereby provided with an opportunity to register and comment on the proposed activity and application. In order to ensure that you are identified and registered as an interested and affected party (I&AP) please submit your name, contact details and the reason for your interest, in writing or telephonically, to Environmental Impact Management Services (Pty) Ltd. Please note that only registered I&AP's will be included in future correspondence regarding this project. Please submit any queries, comments, concerns or issues (including the reference number applicable to the application) to the contact details provided above.