

## **Appendix C9**

- Scoping Phase Focus Group Meetings

21 June 2017  
DEA Ref: To be Confirmed

Dear Landowner,

**RE: NOTIFICATION OF FOCUS GROUP MEETING – VENUE BREAKING DAWN GUEST HOUSE, NOUPOORT FOR THE PROPOSED SAN KRAAL AND PHEZUKOMOYA WIND ENERGY FACILITIES AND ASSOCIATED GRID CONNECTIONS, NORTHERN AND EASTERN CAPE PROVINCES**

Arcus has been appointed to conduct the required public participation processes (PPP) for the proposed developments. As part of the public participation process, Arcus will be hosting a **Focus Group Meeting**. You are invited to attend this meeting. The purpose of this meeting is to provide you with information regarding the proposed developments and to record any questions or comments that you may have on the projects.

The details regarding the meeting are as follows:

Date	Details
Thursday 29 <sup>th</sup> June 2017	<p><b>Venue:</b> <i>Breaking Dawn</i> Guest House, Wilmot Street, Noupoort, 5950</p> <p><b>Time:</b> 11h00 – 12h30</p> <p><b>Structure of Meeting:</b> A short presentation will be given introducing the proposed development. A facilitated questions and comments session to follow after the presentation.</p>

Should you be interested in attending this meeting and if you have not already done so please RSVP as soon as possible, details provided below:

**Arcus Consultancy Services Ltd**

Tel: +27 (0) 21 412 1529 / Fax: +27 (0) 86 609 7327

Postal address: Office 220 Cube Workspace Cnr Long Street and Hans Strijdom Road,  
Cape Town 8001

Email: [sankraal@arcusconsulting.co.za](mailto:sankraal@arcusconsulting.co.za), or [phezukomoya@arcusconsulting.co.za](mailto:phezukomoya@arcusconsulting.co.za)

This meeting is specifically for Project Landowners, if you are unable to attend this meeting, minutes can be forward to you upon request.

Furthermore, you are invited to attend the **Public Meeting**, which is being held on Thursday 29<sup>th</sup> June 2017 at 17h00 at Hutchinson Town Hall, Noupoort 5950 (Corner of Shaw Street and Murray Street).

Please feel free to contact the undersigned should you have any queries.

Kind Regards,



Ashlin Bodasing

## San Kraal and Phezukomoya WEFs

### Email Delivery Receipts – Focus Group Meeting Invite – Project Landowners




Wed 21/06/2017 12:04

sankraal

NOTIFICATION OF FOCUS GROUP MEETING – VENUE BREAKING DAWN GUEST HOUSE, NOUPOORT

To sankraal

Cc 'elize taljaard'; 'beskuitfontein@gmail.com'; 'jdv@eik.co.za'; 'mpela@umsobomvumun.co.za'; 'Jean Gillmer'; 'Hennie Retief'; 'attsec@mindek.co.za'; 'tollie@isat.co.za'; 'kwatt@roundbar.co.za'

 This message was sent with High importance.

 Message  Project Landowner\_Focus Group Meeting Invite\_Updated Venue.pdf (204 KB)

Dear Landowner,

**RE: NOTIFICATION OF FOCUS GROUP MEETING – VENUE BREAKING DAWN GUEST HOUSE, NOUPOORT FOR THE PROPOSED SAN KRAAL AND PHEZUKOMOYA WIND ENERGY FACILITIES AND ASSOCIATED GRID CONNECTIONS, NORTHERN AND EASTERN CAPE PROVINCES**

Please find attached the updated invite to the Focus Group Meeting for Project Landowners, now including the specified venue.

Do not hesitate to contact me should you have any queries in relation to the above-mentioned.

Wishing you a wonderful week further and looking forward to meeting you next week!

Kindest Regards

**Anna Crisp**  
Junior Consultant



**Arcus Project Number 2244 and 2245**

**Proposed San Kraal and Phezukomoya Wind Energy Facilities and Associated Grid Connection Infrastructure**

**Minutes of Land Owner Focus Group Meeting**

**Venue: Breaking Dawn Bed and Breakfast, Noupoort**

**Date: 29 June 2017**

**Time: 11 am**

<b>Attendees: see attached attendance register</b> <b>Project Team:</b> <b>Ashlin Bodasing (AB) –Arcus EAP</b> <b>Anja Albertyn (AA) – Arcus EAP</b> <b>Etienne Albertyn (EA) Arcus Translator</b>
<b>Sanele Maphanga (SM) – InnoWind Applicant</b>
<b>Sheldon Vandrey (SV) - InnoWind Applicant</b>

<b>Attendee</b>	<b>Notes / Comments / Questions</b>	<b>Project Team Response / Answer</b>
	Anja Albertyn (AA) introduced herself and welcomed all attendees, and asked everyone to introduce themselves. AA then proceeded to present the two wind farm projects and the environmental impact assessment (EIA) process.	
	<b>San Kraal Project Questions and Answers</b>	
<b>Q</b>	Do the dots on the map represent the turbine locations?	Yes these are the preliminary positions of the turbines that the applicant chose due to wind and topography, and were assessed by specialists.
<b>Q</b>	How many turbines will there be on San Kraal project?	Up to 78 turbines are proposed to produce 390 MW applied for. Should the REIPPPP maximum 140 MW remain the number of turbines will reduce. Depending on technology and the turbine MW the number of turbines will reduce accordingly as well.



Q	Do you have the road network to get to the turbines?	The EIA report will include the network of internal roads between the turbines. Existing roads will be used as far as possible.
	AA continued with the presentation	
	<b>Phezukomoya Project Questions and Answers</b>	
Q	Is the EIA process one year	Yes, the entire EIA process including authority decision is approximately a year.
Q	Do we get to see the turbine positions before the DEA, and do we have a say to where the roads and transmission lines are positioned?	Yes, you will have the opportunity to comment on the layout and the positioning of the roads and the transmission lines. The social specialist will be visiting the site and be conducting interviews. You will be able to comment on these positions based on your needs for your farm.
Q	For the two developments the EIA process is a year, what happens after the EIA process?	When the REIPPPP is reinstated, InnoWind will bid the projects. It takes approximately a year for DOE to make a decision.
Q	There are a number of projects that wait for and submit bids, why is this project special?	InnoWind Response: The Umsobomvu Wind Farm received environmental authorisation, should this project be selected as a preferred bidder, this will make the costs of connection for San Kraal and Phezukomoya cheaper, which will make the likelihood of these projects being selected better.
Q	Which substation does Noupoot wind farm connect to?	The substation that Noupoot wind farm connects to, does not have the capacity. These projects will hopefully ultimately connect to Hydra D substation, which has not been built yet. InnoWind are in discussions with Eskom to build the substation on their behalf and hand it over for operation.
Q	Will these projects ever happen?	This all depends on Eskom signing the PPA's. Eskom answers to government, there is hope that government will push Eskom to sign these agreements.
Q	Is it fair to say that it is a good thing that the Umsobomvu Municipality is a land owner on this projects?	Yes.



<b>Q</b>	Is there a preferred option for the transmission line?	Yes there is. (referred to the map in the Draft Scoping Report)
<b>Q</b>	Will there be a site visit soon? The roads are not easy to traverse, so a 4x4 is required.	Specialists will be undertaking site visits as part of the EIA phase.
<b>Q</b>	Will the turbine positions be able to change after we have commented on them?	You will have opportunity to comment on the final layout in the public comment period of the EIA. Once an EA is given for turbine positions these cannot change other than a very small distance for micro-siting.
<b>Q from EAP</b>	How much notice do you require prior to the specialists site visits?	At least two weeks' notice, would be appropriate.
<b>Q from EAP</b>	Do you have occupiers or workers on your farms?	Beskuitfontein Farm responded: Yes, they are aware of the project and in support of it. You are welcome to meet with them and get their comments on the project. Taljaard responded: No occupiers, as the people working on the farm at the moment are only temporary and not permanent workers so cannot be called occupiers.
<b>Q from EAP</b>	Do you have any other questions or comments on either project?	No further questions.
	AA thanked all that attended the meeting. Tea and coffee was available. Meeting closed at 12pm.	



# ARCUS

## Attendance Register

Meeting: San Kraal and Phezukomoya Wind Energy Facilities & Associated Grid Connections – Focus Group Meeting – Project Landowners			
DATE: 29 June 2017 at 11h00			
NAME	ORGANISATION	CONTACT DETAILS/EMAIL	SIGNATURE
SP ERASMUS	SP ERASMUS FARM	stefanfontein@gmail.com	
Y. ERASMUS	BESKUITFONTEIN TRUST	eis.yolan@gmail.com	
SHELDON VANDREY	INNOVIND	svandrey@ <sup>innovind</sup> gmail.com	
Saele Mapanga	Innowind	smapanga@ <sup>innovind</sup> gmail.com	
GERWARD TAGMARD	HOLBROOK FARM		
Leandri Tagmard	HOLBROOK FARM	leandri-tagmard@yahoo.com	
Hennie Resies	Kapokhoek FARM	hennie@triokus.co.za	
Etienne Albertyn	Arcus Consulting	etienne@hotmail.co.za	
Ashlin Bodesing	Arcus Consulting	ashlinb@arcusconsulting.co.za	
Anja Albertyn	Arcus Consultancy	anja@arcusconsulting.co.za	

21 June 2017  
DEA Ref: To be Confirmed

**ATT: Umsobomvu Local Municipality**

**RE: NOTIFICATION OF FOCUS GROUP MEETING VENUE – MUNICIPALITY OFFICES,  
NOUPOORT - FOR THE PROPOSED SAN KRAAL AND PHEZUKOMOYA WIND ENERGY  
FACILITIES AND ASSOCIATED GRID CONNECTIONS, NORTHERN AND EASTERN CAPE  
PROVINCES**

Arcus has been appointed to conduct the required public participation processes (PPP) for the proposed developments. As part of the public participation process, Arcus will be hosting a **Focus Group Meeting**. You are invited to attend this meeting. The purpose of this meeting is to provide you with information regarding the proposed developments and to record any questions or comments that you may have on the projects.

The details regarding the meeting are as follows:

Date	Details
<b>Wednesday 28<sup>th</sup> June 2017</b>	<b>Venue:</b> Boardroom, Municipal Offices, Shaw Street, Noupoort 5950.  <b>Time:</b> 11h00 – 12h30  <b>Structure of Meeting:</b> A short presentation will be given introducing the proposed development. A facilitated questions and comments session to follow after the presentation.

Should you be interested in attending this meeting and if you have not already done so please RSVP as soon as possible, details provided below:

**Arcus Consultancy Services Ltd**

Tel: +27 (0) 21 412 1529 / Fax: +27 (0) 86 609 7327

Postal address: Office 220 Cube Workspace Cnr Long Street and Hans Strijdom Road,  
Cape Town 8001

Email: [sankraal@arcusconsulting.co.za](mailto:sankraal@arcusconsulting.co.za), or [phezukomoya@arcusconsulting.co.za](mailto:phezukomoya@arcusconsulting.co.za)

This meeting is specifically for the Local Municipality and Ward Councillors, if you are unable to attend this meeting, minutes can be forward to you upon request.

Furthermore, you are invited to attend the **Public Meeting**, which is being held on Thursday 29th June 2017 at 17h00 at Hutchinson Town Hall, Noupoort 5950 (Corner of Shaw Street and Murray Street).

Please feel free to contact the undersigned should you have any queries.

Kind Regards,



Ashlin Bodasing



## San Kraal and Phezukomoya WEFs

### Email Delivery Receipts - Focus Group Meeting Invite – Umsobomvu Municipality including Ward Councillors



Wed 21/06/2017 15:59

sankraal

Invitation to Focus Group Meeting - 28th June 2017

To sankraal

Cc 'Birtus Kapp'; 'msestile@umsobomvumun.co.za'; 'wminnie@umsobomvumun.co.za'; 'Sarah Brown'; 'mpela@umsobomvumun.co.za'

This message was sent with High importance.

---

Message Focus Group Meeting Invite\_Umsobomvu.pdf (207 KB)

---

Dear Interested and Affected Party,

**RE: NOTIFICATION OF FOCUS GROUP MEETING – VENUE MUNICIPALITY OFFICES, NOUPOORT FOR THE PROPOSED SAN KRAAL AND PHEZUKOMOYA WIND ENERGY FACILITIES AND ASSOCIATED GRID CONNECTIONS, NORTHERN AND EASTERN CAPE PROVINCES**

Please find attached the updated invite to the Focus Group Meeting for the Local Municipality and Ward Councillors now including the specified venue.

Do not hesitate to contact me should you have any queries in relation to the above-mentioned.

Wishing you a wonderful week further and looking forward to meeting you next week!

Kindest Regards,

**Anna Crisp**  
Junior Consultant

---



**Arcus Project Number 2244 and 2245**

**Proposed San Kraal and Phezukomoya Wind Energy Facilities and Associated Grid Connection Infrastructure**

**Minutes of Focus Group Umsobomvu Municipality Meeting**

**Venue: Umsobomvu Municipality Boardroom**

**Date: 28 June 2017**

**Time: 11 am**

**Attendees:** *SEE ATTACHED ATTENDANCE REGISTER*  
**Attendees:** see attached attendance register  
**Project Team:**  
**Ashlin Bodasing (AB) –Arcus EAP**  
**Anja Albertyn (AA) – Arcus EAP**  
**Etienne Albertyn (EA) Arcus Translator**  
**Sanele Maphanga (SM) – InnoWind Applicant**  
**Sheldon Vandrey (SV) - InnoWind Applicant**

Attendee	Notes	Responses
	<p>Ashlin Bodasing (AB) of Arcus Consulting welcomed all attendees to the meeting and thanked them for their attendance. She proceeded to explain the format of the meeting, a short presentation on the Environmental Impact Assessment (EIA) process will be given, followed by individual project descriptions of the two wind farm projects. She further explained that a question and answer session will follow after each project presentation. AB then introduced Anja Albertyn (AA) from Arcus Consulting who will be providing the presentation. AA then asked all attendees to introduce themselves, before proceeding with the presentation.</p> <p>San Kraal Wind Energy Facility – Questions and Answers / Discussion</p>	
<p><b>Q</b></p>	<p>Please can you elaborate on the community trust?</p>	<p>A requirement of the Renewable Energy Independent Power Producers Procurement Programme (REIPPPP) is that wind farms must allocate a certain percentage of their profit towards community development and that money is available to the public within 50 km of the wind farm. The way that the</p>



		trust is set up is that individuals can apply to the trust to receive the money for community developments.
<b>Q</b>	Who are the administrators of the trust?	When the trust is established, a board of trustees will be appointed and may consists of ±5 individuals.
<b>Q</b>	Why is it called a community trust if the community is not involved?	The community can apply to the trust for specific project or development they wish to use the money for. Therefore the broader community can and will be involved.
<b>Q</b>	Does the community not have a seat on the board?	Yes a member of the community / community representative can be on the board.
<b>C</b>	At least two people from the community should be involved and part of the board.	
<b>Q</b>	Benefits of that goes into the trust, when does the community get the benefits?	The community only receives the benefits when the project starts generating an income, which is after construction, during the operation of the wind farm.
<b>Q</b>	When does the trust kick in?	A trust can be set up during the Financial Close process, and start receiving funds when the project starts generating an income. The money in the trust will accumulate growth, if it is not used in one year, the money will roll over into the next year.
<b>Q</b>	Can you indicate where the municipality land portions are?	The municipality owns half the land portions on the San Kraal project.
<b>Q</b>	How many turbines will the municipality have on their land?	Unable to say for certain at this stage as the layout will change through the EIA process and the number of turbines may change.
<b>Q</b>	When will rezoning of municipal land take place?	Should the project proceed SALA and LUPO applications will need to be done with land use planning, and apply for long lease applications. This will only occur when the project is bid and if the project gets selected as a preferred bidder.
<b>Q</b>	Will the evaluation process of the properties in terms of land value only happen after the project is built?	Independent assessors will be used to determine the value of the land, if needed.
<b>Q</b>	What model do you use to determine the value of the land? Do you have a specific model?	An independent land surveyor will do this, the developer does not undertake this assessment. The municipality can appoint their own surveyors as well if they do not agree with the

		assessment, and then an average assessment value can be take, if needed.
<b>QUESTION AND DISCUSSION SESSION FOR SAN KRAAL ENDED</b>		
<b>AA CONTINUED WITH THE PRESENTATION – PROJECT DESCRIPTION PHEZUKOMOYA</b>		
<b>Phezukomoya question /answers and discussion</b>		
	SM and AA indicated which land portions on the Phezukomoya project is municipal land.	
<b>Q</b>	Both projects have municipal land portions?	Yes that is correct.
<b>Q</b>	There has been an increased mortality rate on birds of prey at wind farms, what is your experience?	There have been some fatality on birds of prey in South Africa, and that is why pre construction monitoring according to the current guidelines is important for wind farm projects. Some of these farms did not undertake the 12 months of bird monitoring, prior to being built.
<b>Q</b>	Will the two projects have separate trusts?	Yes, each project will have its own trust, depending on the financial models used.
<b>Q</b>	The issue around birds is most critical, can we not get the experienced people to train community member to assist with the bird monitoring.	This does happen in the operational phase of the project, when local searchers are appointed and trained to search for carcasses.
<b>Q</b>	Can this not happen during the pre-construction, as these are local people are know the area, and can be trained to help with bird identification	This is noted and will be forward to the consultants for their consideration, for future projects.
<b>Q/C</b>	The municipality, is not only an interested party but is also an affected party, how will the developer accommodate the municipality, in terms of determining, the location or roads, laydown areas, and especially with appointed contractors. Will the municipality be able to attend site meetings?	Landowners don't generally sit in on site meetings, the contractor will need to be consulted when the time arrives. The Contractor will need to comply with the Environmental Management Programme, rehabilitation will be done in a systematic continuous basis. When the contractor is completed construction with an area, rehabilitation will immediately commence on that area.
<b>C</b>	A particular concern is with contractor's indiscriminately creating access road to turbines.	The municipality will have an opportunity to comment on the layout, and advise on areas to be avoided by construction activities, as well as the development itself. The municipality will be able to say where their no-go areas are. As part of the environmental authorisation and conditions set by the department of environmental affairs, and environmental



		control officer will be appointed to monitor construction activities, and ensure the contractor keeps away from no go areas.
<b>Q / C</b>	<p>This process has been happening for some time now, what is the feeling around renewable energy, it is worrying and confusing, is this really going to happen? Is there a possibility that this will happen in two years? Because bidding the project does not mean you get selected. Another concern is, as an I&amp;AP we raise issues before the actual work and construction starts, what happens if the project team changes, promises and commitments might also change. There is a high level of unemployment – not all of them have matric, how do we give them skills?</p> <p>With regards to the community trust, do you interact with the IDP, people have raised issues, which have been included in the IDP, can the trust assist with this, and the issues included in the IDP?</p> <p>Does InnoWind assist with infrastructure development in the area of the wind farm? Or does this only happen when the community applies to the trust?</p>	<p>The REIPPPP process is currently stalled in the country, power purchase agreements between developers and Eskom have not been signed. DOE needs to sign the PPA's. InnoWind as a company is committed to renewable energy development in South Africa and will continue to develop wind farm projects regardless of the timeframes.</p> <p>Regarding the "disappearing developer" –many developers build, construct and then sell to another company. InnoWind builds and keeps the projects. Though the team may change, as an asset management team will take over the project from construction. All necessary information will be passed onto them.</p> <p>Regarding the IDP and Community Trust – millions of Rands are spent to get the project to the point of construction, and this is spent at risk by the developer. InnoWind does not spend money during the development process, but once the project is operational there will be money to be spent from the community trust.</p>
<b>C</b>	Salinga Farmers Association should be included on the I&AP list, if not already. They use municipal land for grazing.	
<b>Q/C</b>	What is the background of InnoWind, what other projects have they been involved in?	InnoWind presented a video about the community trust projects from their existing wind farm. As the video contained sound, it was not possible to everyone to hear the video. A copy of the video will be emailed to all attendees at this meeting.
AA CONTINUED WITH THE REMAINDER OF THE PRESENTATION		
No further questions were raised.		
Meeting closed at 12:05 pm with light snacks and drinks.		



# ARCUS

## Attendance Register

Meeting: San Kraal and Phezukomoya Wind Energy Facilities & Associated Grid Connections Focus Group Meeting - Umsobomvu Local Municipality DATE: 28 June 2017 at 11h00			
NAME	ORGANISATION	CONTACT DETAILS/EMAIL	SIGNATURE
Etiene Albertyn	Arcus Sub Contractor	etienea@hotmail.co.za	
Ashlin Boobasing	Arcus Consultancy	ashlinboobasing@arcusconsulting.co.za	
Birtus Kapp	Umsobomvu Municipality	birtus@umsobomvumun.co.za	 082 806 1828
Mzimkhulu Sestile	Umsobomvu Municipality	mzimkhulusestile@gmail.com 082 896 3558	 082 8800 297
Willem Minnie	Umsobomvu Municipality	willemminnie28@gmail.com	
Mzwandile Toto	Umsobomvu Municipality	toto@umsobomvumun.co.za	 083 452 2455
Stanford Smith	Manager Mayors Office	083 627 9561 smith@umsobomvumun.co.za	
SARHA BROWN	Umsobomvu Municipality	082 896 3565	
Saele Maphanga	Umsobomvu Municipality	060 835 5958	
SHELDON VANDREY	INNOWIND	svandrey@innovind.com 082 062 9361	
Anja Albertyn	Arcus Consultancy	anjaA@arcusconsulting.co.za	



**UMSOBOMVU MUNICIPALITY**  **MEETING**

**The Proposed San Kraal and Phezukomoya Wind Energy Facilities and Associated Grid Connections, Northern and Eastern Cape Provinces.**

**San Kraal Wind Power (Pty) Ltd  
Phezukomoya Wind Power (Pty) Ltd**

**Project Team** 

**Environmental Assessment Practitioners:**  
Arcus Consultancy Services South Africa  
Ashlin Bodasing; and  
Anja Albertyn.


**Applicant:**  
San Kraal Wind Power (Pty) Ltd &  
Phezukomoya Wind Power (Pty) Ltd

**Agenda** 


- Introduction
- Project Team
- Scoping and EIA Process
- Public Participation Process
- Need and Desirability
- Alternatives
- Project Location
  
- Project Description-San Kraal
- Specialist Studies- San Kraal
- Question and Discussion
  
- Project Description – Phezukomoya
- Specialist Studies – Phezukomoya
- Questions and Discussion
- Way Forward



**WHY ENVIRONMENTAL IMPACT ASSESSMENT FOR THESE PROJECTS?**

**Introduction** 

- This is a COMBINED presentation for TWO WIND ENERGY PROJECTS  
SAN KRAAL WEF & PHEZUKOMOYA WEF.
- Shared processes will be discussed first followed by the individual project descriptions and separate question and discussion sessions.

**Legal Requirements** 

**National Environmental Management Act, 1998 (Act No. 107 of 1998), as amended in 2017.**

**GN No. R. 327 Listing Notice 1:**  
*11) The development of facilities or infrastructure for the transmission and distribution of electricity - (i) outside urban areas or industrial complexes with a capacity of more than 33 but less than 275 kilovolts.*

**GN No. R. 325 Listing Notice 2:**  
*1) The development of facilities or infrastructure for the generation of electricity from a renewable resource where the electricity output is 20 megawatts or more.*

ARCUS

**HOW DO WE ACHIEVE THE LEGAL REQUIREMENTS?**

ARCUS

**WHAT IS SCOPING AND ENVIRONMENTAL IMPACT ASSESSEMENT?**

Scoping and EIA Process ARCUS

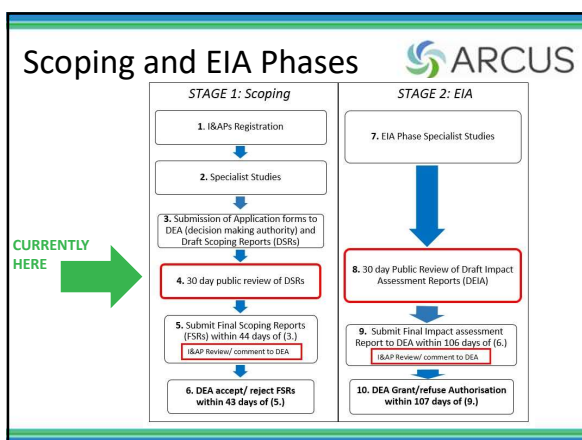
The EIA Process consists of:

- A Full Scoping and EIA to be conducted for the proposed WEFs and Grid connections.
- Independent specialist studies.
- Public participation process.

Scoping and EIA ARCUS

- Scoping and environmental impact assessment is the process of evaluating the potential impacts of a proposed project on environmental receptors (plants, animals, people, etc.).


**WE ARE CURRENTLY IN THE SCOPING PHASE OF THE PROJECTS AND ARE COLLECTING BASELINE ENVIRONMENTAL INFORMATION**



ARCUS


**HOW DO WE DETERMINE THE POTENTIAL IMPACTS OF THE PROJECTS?**





### Specialist Studies


- **Bird Impact Assessment and 12 Month Pre-Construction Monitoring**  
Chris van Rooyen Consulting: Chris van Rooyen
- **Bat Impact Assessment and 12 Month Pre-Construction Monitoring**  
Animalia Consultants: Werner Marais
- **Terrestrial Ecological Impact Assessment (Fauna & Flora)**  
Simon Todd Consulting: Simon Todd
- **Heritage, Archaeology and Paleontology Impact Assessment**  
ACO & Associates: Dr. Tim Hart in association with Dr John Almond
- **Aquatic/Wetland Assessment**  
Scherman Colloty & Associates: Dr. Brian Colloty
- **Noise Impact Assessment**  
Enviro-Acoustic Research: Morné de Jager
- **Visual and Landscape Assessment**  
Sj Vest: Andrea Gibb and Kerry Schwartz
- **Soils and Agriculture**  
Agricultural Research Council: Garry Patterson
- **Social Impact Assessment**  
Tony Barbour Environmental Consultant and Researcher: Tony Barbour



## *PUBLIC PARTICIPATION FOR SAN KRAAL AND PHEZUKOMOYA – WHAT HAS BEEN DONE?*




## *WHAT IS PUBLIC PARTICIPATION AND WHY IS IT NEEDED?*



### Public Participation

- PPP to be shared between both projects due to proximity of the sites (agreement with DEA).
- Interested and Affected Parties (I&APs) identified – landowners, neighbours, Ward councillors, authorities and NGOs.
- Advertisements (22<sup>nd</sup> & 29<sup>th</sup> April 2016 – the Herald and the Advertiser).
- Distribution of notification letters and Background Information Documents (April 2016).
- Site notices and posters - boundaries of the WEFs and grid connection sites and in the town of Noupoort (April 2016).




### Public Participation Process

The aim of the public process is to:

- inform I&APs about the proposed developments;
- obtain I&AP feedback – comments, questions, issues, concerns (positive or negative); and
- address and investigate all issues raised and document these in the reports which are to be submitted to the DEA.




## *HOW CAN YOU BE INVOLVED DURING THE PUBLIC PARTICIPATION PROCESS?*

**Public Involvement** 


Reports for public review and comment.

Reports, including public comment, to be submitted to the DEA for a decision:


- Draft Scoping Report – I&AP comment;
- Final Scoping Report – submit to DEA with I&AP comments (I&AP also can comment on final reports);
- Draft Environmental Impact Assessment Report and Environmental Management Programme (EMPr) – I&AP Comment on these reports.
- Final Environmental Impact Assessment Reports and EMPr – submit to DEA for decision, I&AP comment on the final reports.

**...Continued** 


- The project is in line with national, provincial and local planning and policy in terms of using renewable energy to combat climate change.
- Most importantly Noupoort has very good wind resource, which the applicant has been measuring for over two years.



*WHY WIND ENERGY PROJECTS IN NOUPOORT?*




*IF NOT WIND ENERGY IN NOUPOORT, THEN WHAT OTHER WAY TO MEET THE NEEDS?.....*

**Need and Desirability** 

- Wind energy is considered an alternative to meeting the need for increased electricity demand over other sources of generation, such as fossil fuels.

Wind energy:

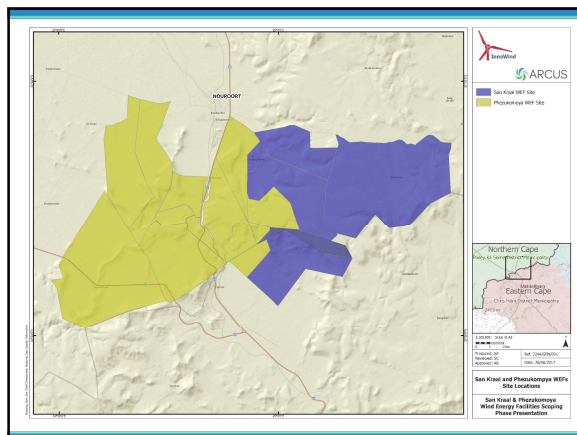
- Positive impact on climate change;
- Overcoming the country's energy constraints;
- Diversification and decentralisation of supply;
- Reduced costs of energy; and
- Positive economic development including job creation

**ALTERNATIVES** 

- Alternative are different means of meeting the general purpose and need of a proposed development.
- PURPOSE FOR THESE PROJECTS – Generation of electricity
- NEED FOR THESE PROJECTS – Cleaner renewable sources of fuel.

## Alternatives Considered

- Alternative locations / sites
- Alternative activities – agriculture/farming
- Alternative process or technology – wind, solar, nuclear, coal
- No-Go Alternative – no projects to be developed
- Alternative design / layout – considered in this process
- Alternative grid connection routes



## 

*WHERE ARE THE PROJECTS LOCATED?*

## 

*THE SAN KRAAL WIND ENERGY FACILITY.  
WHAT IS IT AND WHAT DOES IT CONSIST OF?*

## San Kraal and Phezukomoya

### Location

- Umsobomvu Local Municipality & Pixley ka Seme District Municipality (Northern Cape).
- Inxuba Yethemba Local Municipality & Chris Hani District Municipality (Eastern Cape).

## 

### San Kraal Project Description

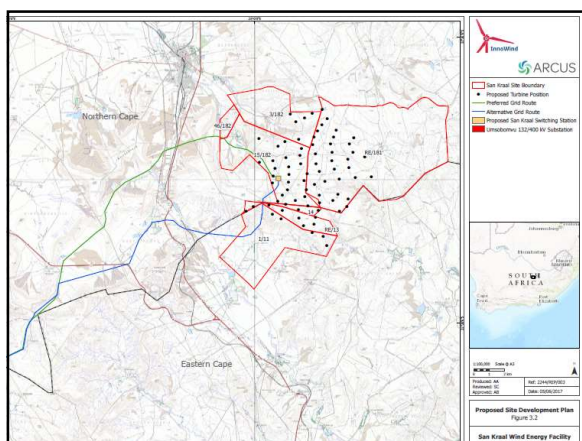
- Up to 78 WTGs with generation capacity of 390 MW.
- WTGs range from 3 MW – 5 MW each.
- Hub height of up to 150 m.
- Rotor diameter up to 150 m.
- 33kV underground electrical cables.
- An on-site switching station complex to facilitate stepping up the voltage (up to 132 kV).
- 25 km 132 kV high voltage overhead power line from the on-site switching station to the proposed 132/400 kV proposed Umsobomvu Substation to the national grid.




**WHAT DOES THE SAN KRAAL PROJECT LOOK LIKE?**




**WHAT DID THE SPECIALISTS STUDIES FIND?**





**Specialist Studies**


- **Bats** – Collisions with turbines possible. 12 month monitoring concluded, and to be analysed in EIA Phase. Preliminary moderate and high sensitivity areas are identified. No turbines in highly sensitive areas.
- **Birds** – Collisions, disturbance and displacement possible. 12 month monitoring concluded and to be analysed in EIA Phase. No turbines in highly sensitive areas.
- **Ecology (Fauna and Flora)** - Moderately sensitive site; Presence of listed and endemic species low across site. Additional field verification required. No turbines in areas with very high sensitivity.
- **Freshwater Ecology** - limited impact of low significance; WULAs required for river crossings.

**Supporting Infrastructure** 

- Foundations and hardstands;
- Internal access roads;
- An operations and services workshop area/office building for control, maintenance and storage.

During the construction phase the following will be required:

- Temporary infrastructure including a site camp;
- A laydown area for each turbine.




**....Cont.....**

- **Heritage** – Scenic impacts from N9 and railway likely; no red flags identified; The area is paleontologically sensitive.
- **Noise** - Possible impact on Noise Sensitive Developments; measurements and modelling required.
- **Social** - Potential positive social impacts (such as employment, Community Trust, generation of renewable energy) likely to outweigh potential negative social impacts (such as construction workers, stock theft, damage to roads).
- **Visual** – alteration of area’s visual character and potential impact on sensitive receptors. Visual receptors sensitivity still to be established.
- **Soils** - Potential of soils for rain-fed cultivation is low to very low – NO FURTHER STUDY REQUIRED

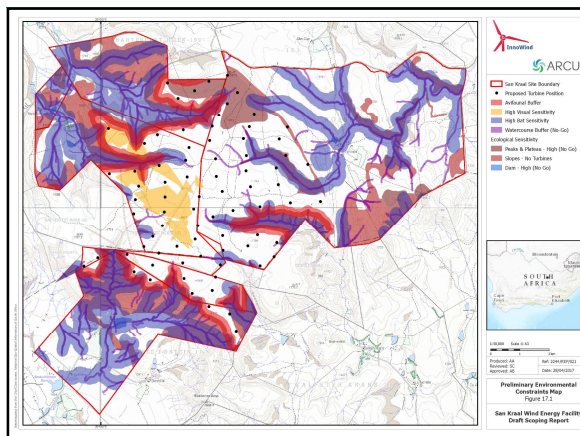


**WHAT DO THE SPECIALIST FINDING  
LOOK LIKE?**




**KEY ISSUES RAISED**

- Impacts on listed and protected trees.
- Permits required for loss of certain plant species.
- Proposed turbines must clear radio links by 300m.
- Permission required from SANRAL if access from N9 required.
- Need for a cumulative impact assessment.
- Bird study to include cumulative assessment.
- Heritage impact assessment must consider sense of place.
- Impacts on value of surrounding properties.
- Compliance with international bird conservation agreements.







**DO YOU HAVE ANY QUESTIONS OR  
COMMENTS ON SAN KRAAL?**



**WHAT ARE THE KEY ISSUES  
SUBMITTED FOR SAN KRAAL FROM  
THE PUBLIC?**



**WHAT IS THE PHEZUKOMYA WIND  
ENERGY FACILITY AND WHAT DOES  
IT CONSISTS OF?**



### Phezukomoya Project Description

- Up to 63 WTGs with generation capacity of 315 MW.
- WTGs range from 3 MW – 5 MW each.
- Hub height of up to 150 m.
- Rotor diameter of up to 150 m.
- 33 kV underground electrical cables.
- An on-site switching station complex to facilitate stepping up the voltage (up to 132 kV).
- 15 km 132 kV high voltage overhead power line from the on-site switching station to the proposed Umsobomvu 400 kV Substation to the national grid.




### Supporting Infrastructure


- Foundations and hardstands;
- Internal access roads;
- An operations and services workshop area/office building for control, maintenance and storage.

During the construction phase the following will be required:

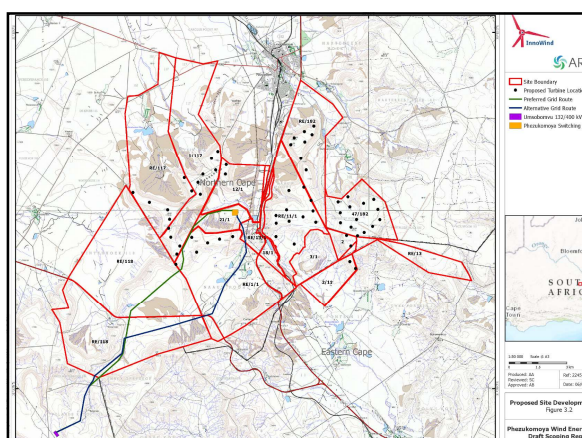
- Temporary infrastructure including a site camp;
- A laydown area for each turbine.




### WHAT DOES THE PHEZUKOMYA PROJECT LOOK LIKE?



### WHAT DID THE SPECIALIST STUDIES FIND AT PHEZUKOMOYA?







### Specialist Findings

- **Bats** – Collisions with turbines possible. 12 month monitoring concluded, and to be analysed in EIA Phase. Preliminary moderate and high sensitivity areas are identified. No turbines in highly sensitive areas.
- **Birds** – Collisions, disturbance and displacement possible. 12 month monitoring concluded and to be analysed in EIA Phase. No turbines in highly sensitive areas.
- **Ecology (Fauna and Flora)** - Moderately sensitive site; Presence of some listed and endemic species; Additional field verification required. No turbines in areas with very high sensitivity.
- **Freshwater Ecology** - limited impact of low significance; WULAs required for river crossings.




**Specialist Findings..** 


- **Heritage** – Scenic impacts from N9 and railway likely; no red flags identified; The area is paleontologically sensitive.
- **Noise** - Possible impact on Noise Sensitive Developments; modelling required.
- **Social** - Potential positive social impacts (such as employment, Community Trust, generation of renewable energy) likely to outweigh potential negative social impacts (such as construction workers, stock theft, damage to roads).
- **Visual** – alteration of area’s visual character and potential impact on sensitive receptors. Visual receptors sensitivity still to be established.
- **Soils** - Potential of soils for rain-fed cultivation is low to very low – NO FURTHER STUDY REQUIRED



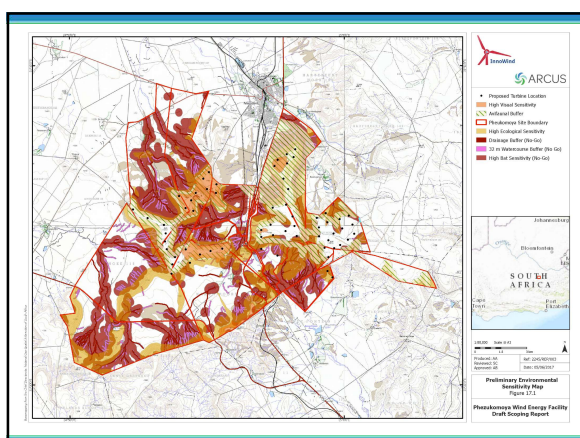
**WHAT HAVE BEEN THE KEY ISSUES RAISED FOR PHEZUKOMOYA FROM THE PUBLIC?**




**WHAT DO THE SPECIALIST FINDINGS AT PHEZUKOMOYA LOOK LIKE?**

**Key Issues Raised** 

- Distance from Transnet property and national roads.
- Impacts on listed and protected trees.
- Permits required for loss of certain plant species.
- Proposed turbines must clear radio links by 300 m.
- Permission required from SANRAL if access from N9 required.
- Need for a cumulative impact assessment.
- Bird study to include cumulative assessment.
- Heritage impact assessment must consider sense of place.
- The Southern Great Escarpment should be used as a context for the bird study.
- Impacts on value of surrounding properties.
- Compliance with international bird conservation agreements.






**DO YOU HAVE ANY COMMENTS OR QUESTIONS ON PHEZUKOMOYA WIND ENERGY FACILITY?**

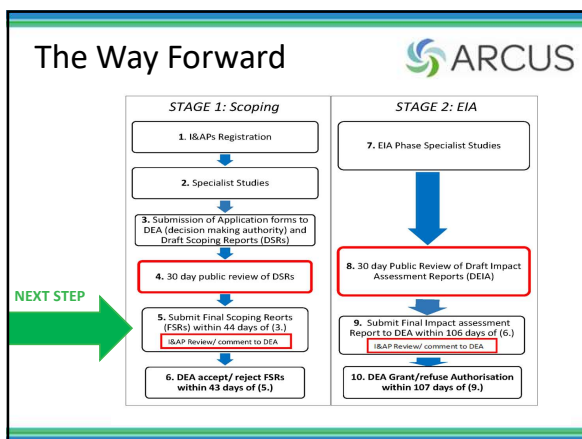


**WHAT HAPPENS NOW?**

**Plan of Study for EIA** 

The EIA Phase will include:

- Specialist assessment of alternative layouts;
- Specialist site visits, investigations and modelling;
- Public participation (comment on reports and public event, issues trail);
- Cumulative impact assessment; and
- Consultation with the DEA.



**Discussion** 

Thank you for attending this meeting and for your feedback.

Please advise us if there are any additional key stakeholders who you think we should inform.

The minutes of this meeting will be forwarded to attendees.



**LOOKING AHEAD...  
ENVIRONMENTAL IMPACT  
ASSESSMENT PHASE....**