

**SCREENING REPORT FOR AN ENVIRONMENTAL AUTHORIZATION AS  
REQUIRED BY THE 2014 EIA REGULATIONS – PROPOSED SITE  
ENVIRONMENTAL SENSITIVITY**

**EIA Reference number:**

**Project name:** Block 1 Oil and Gas Exploration

**Project title:** Block 1 Oil and Gas Exploration

**Date screening report generated:** 12/03/2021 16:50:48

**Applicant:** GP Kriel - EIMS

**Compiler:** Liza Pretorius

**Compiler signature:**

.....

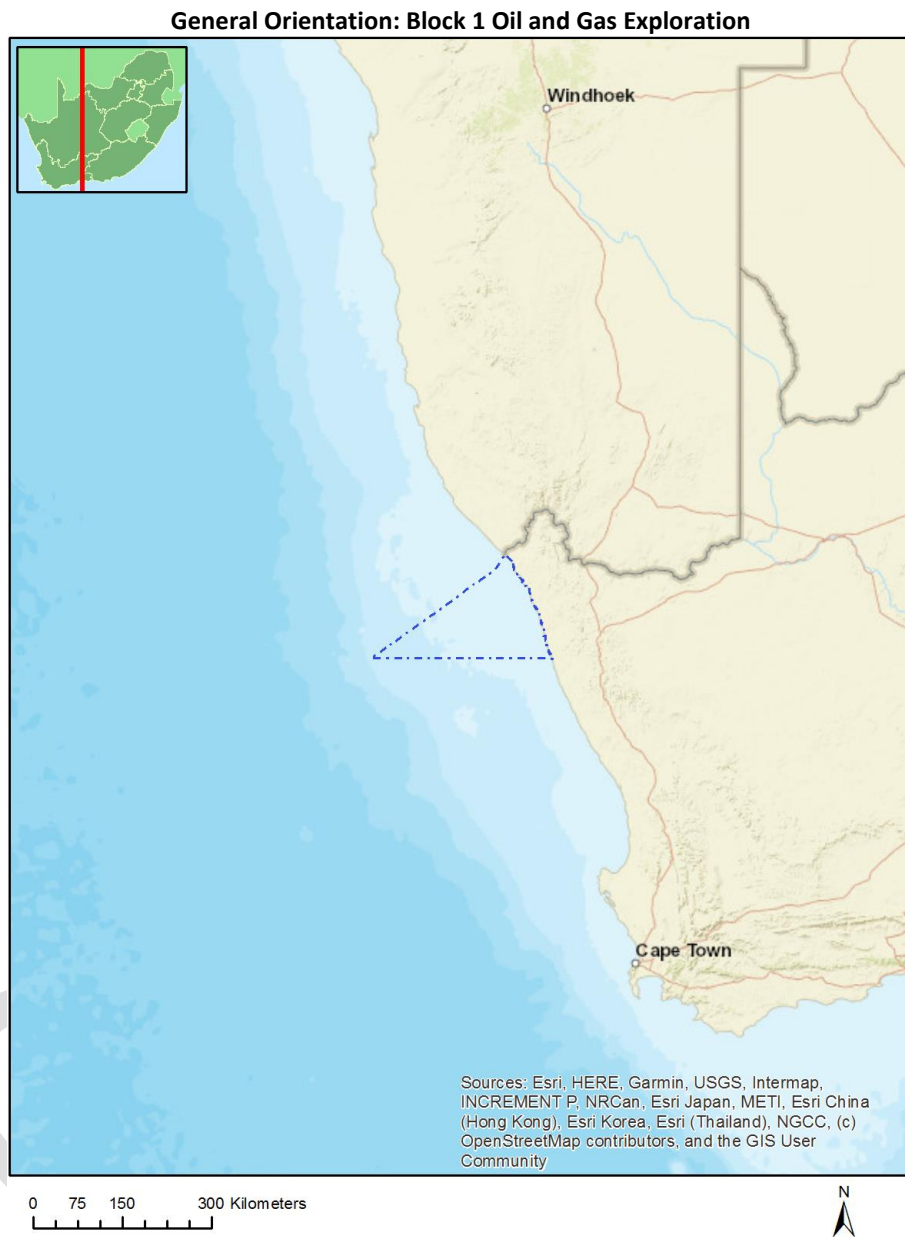
**Application Category:** Mining|Exploration Right|Gas or Oil Marine

## Table of Contents

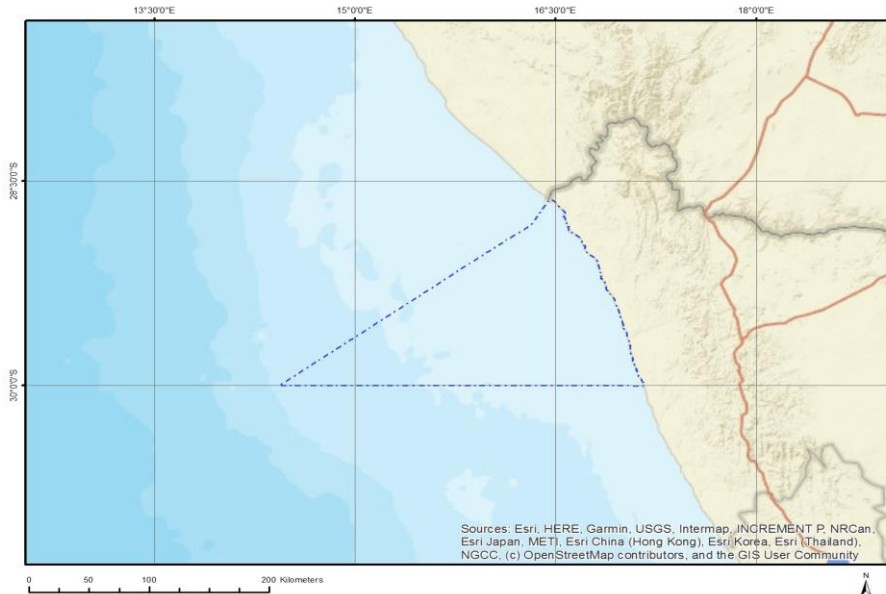
Proposed Project Location .....	3
Orientation map 1: General location .....	3
Map of proposed site and relevant area(s) .....	4
Cadastral details of the proposed site .....	4
Wind and Solar developments with an approved Environmental Authorisation or applications under consideration within 30 km of the proposed area .....	6
Environmental Management Frameworks relevant to the application .....	6
Environmental screening results and assessment outcomes .....	6
Relevant development incentives, restrictions, exclusions or prohibitions .....	6
Map indicating proposed development footprint within applicable development incentive, restriction, exclusion or prohibition zones .....	8
Proposed Development Area Environmental Sensitivity .....	8
Specialist assessments identified .....	9
Results of the environmental sensitivity of the proposed area .....	11
MAP OF RELATIVE AGRICULTURE THEME SENSITIVITY .....	11
MAP OF RELATIVE ANIMAL SPECIES THEME SENSITIVITY .....	12
MAP OF RELATIVE AQUATIC BIODIVERSITY THEME SENSITIVITY .....	13
MAP OF RELATIVE ARCHAEOLOGICAL AND CULTURAL HERITAGE THEME SENSITIVITY .....	14
MAP OF RELATIVE CIVIL AVIATION THEME SENSITIVITY .....	15
MAP OF RELATIVE DEFENCE THEME SENSITIVITY .....	16
MAP OF RELATIVE PALEONTOLOGY THEME SENSITIVITY .....	17
MAP OF RELATIVE PLANT SPECIES THEME SENSITIVITY .....	18
MAP OF RELATIVE TERRESTRIAL BIODIVERSITY THEME SENSITIVITY .....	19

# Proposed Project Location

## Orientation map 1: General location



## Map of proposed site and relevant area(s)



## Cadastral details of the proposed site

Property details:

No	Farm Name	Farm/ Erf No	Portion	Latitude	Longitude	Property Type
1	PORT NOLLOTH	142	0	29°15'24.94S	16°52'6.35E	Erven
2	PORT NOLLOTH	144	0	29°15'26.13S	16°52'6.69E	Erven
3	PORT NOLLOTH	143	0	29°15'25.54S	16°52'6.52E	Erven
4	PORT NOLLOTH	147	0	29°15'27.91S	16°52'7.22E	Erven
5	PORT NOLLOTH	141	0	29°15'24.35S	16°52'6.18E	Erven
6	PORT NOLLOTH	145	0	29°15'26.72S	16°52'6.86E	Erven
7	PORT NOLLOTH	148	0	29°17'7.42S	16°52'45E	Erven
8	PORT NOLLOTH	146	0	29°15'27.32S	16°52'7.04E	Erven
9	PORT NOLLOTH	286	0	29°15'42.84S	16°52'11.41E	Erven
10	PORT NOLLOTH	285	0	29°15'46.62S	16°52'11.03E	Erven
11	PORT NOLLOTH	393	0	29°15'43.71S	16°52'22.98E	Erven
12	PORT NOLLOTH	516	0	29°15'14.63S	16°53'31.2E	Erven
13	PORT NOLLOTH	516	0	29°14'36.26S	16°51'48.16E	Erven
14	PORT NOLLOTH	516	0	29°13'59.91S	16°51'13.86E	Erven
15	PORT NOLLOTH	602	0	29°14'42.76S	16°52'0.93E	Erven
16	PORT NOLLOTH	516	0	29°15'5.85S	16°52'4.53E	Erven
17	PORT NOLLOTH	516	0	29°15'21.13S	16°52'4.86E	Erven
18	PORT NOLLOTH	1112	0	29°17'9.14S	16°52'43.49E	Erven
19	PORT NOLLOTH	1117	0	29°17'9.17S	16°52'42.22E	Erven
20	PORT NOLLOTH	1110	0	29°17'8.35S	16°52'44.71E	Erven
21	PORT NOLLOTH	1100	0	29°17'6.2S	16°52'45.07E	Erven
22	PORT NOLLOTH	1270	0	29°17'10.19S	16°52'44.25E	Erven
23	PORT NOLLOTH	1098	0	29°16'54.46S	16°52'48.7E	Erven
24	PORT NOLLOTH	1268	0	29°17'10.24S	16°52'44.86E	Erven
25	PORT NOLLOTH	1272	0	29°17'9.46S	16°52'44.6E	Erven
26	PORT NOLLOTH	1119	0	29°17'10.08S	16°52'43.36E	Erven
27	PORT NOLLOTH	1121	0	29°17'11.08S	16°52'43.73E	Erven
28	PORT NOLLOTH	1271	0	29°17'9.69S	16°52'44.09E	Erven
29	PORT NOLLOTH	1269	0	29°17'10.79S	16°52'44.5E	Erven
30	PORT NOLLOTH	2487	0	29°15'26.34S	16°52'4.44E	Erven

31	PORT NOLLOTH	1566	0	29°16'53.69S	16°52'47.08E	Erven
32	PORT NOLLOTH	2875	0	29°15'56.68S	16°52'10.16E	Erven
33	PORT NOLLOTH	3181	0	29°17'11.9S	16°52'44.52E	Erven
34	PORT NOLLOTH	2486	0	29°15'23.59S	16°52'9.01E	Erven
35	PORT NOLLOTH	2885	0	29°15'23.14S	16°52'5.18E	Erven
36	PORT NOLLOTH	3280	0	29°17'9.62S	16°52'41.43E	Erven
37	PORT NOLLOTH	3290	0	29°15'56.79S	16°52'6.23E	Erven
38	PORT NOLLOTH	3368	0	29°16'19.01S	16°52'31.79E	Erven
39	PORT NOLLOTH	3378	0	29°16'7.91S	16°52'23.69E	Erven
40	PORT NOLLOTH	3380	0	29°16'9.25S	16°52'24.39E	Erven
41	PORT NOLLOTH	3385	0	29°16'13.28S	16°52'25.78E	Erven
42	PORT NOLLOTH	3391	0	29°16'16.99S	16°52'29.31E	Erven
43	PORT NOLLOTH	3392	0	29°16'17.41S	16°52'30.03E	Erven
44	PORT NOLLOTH	3394	0	29°16'18.22S	16°52'31.59E	Erven
45	PORT NOLLOTH	3519	0	29°16'13.06S	16°52'27.57E	Erven
46	PORT NOLLOTH	3180	0	29°17'11.53S	16°52'44.1E	Erven
47	PORT NOLLOTH	3336	0	29°17'10.17S	16°52'41.46E	Erven
48	PORT NOLLOTH	3342	0	29°17'12.41S	16°52'44.57E	Erven
49	PORT NOLLOTH	3287	0	29°14'20.7S	16°51'23.2E	Erven
50	PORT NOLLOTH	3376	0	29°16'6.28S	16°52'22.97E	Erven
51	PORT NOLLOTH	2488	0	29°15'25.3S	16°52'5.01E	Erven
52	PORT NOLLOTH	3375	0	29°16'5.49S	16°52'22.72E	Erven
53	PORT NOLLOTH	3382	0	29°16'11.09S	16°52'24.88E	Erven
54	PORT NOLLOTH	3389	0	29°16'16.02S	16°52'28.08E	Erven
55	PORT NOLLOTH	3311	0	29°17'8.73S	16°52'44.12E	Erven
56	PORT NOLLOTH	3340	0	29°17'10.61S	16°52'43.47E	Erven
57	PORT NOLLOTH	3381	0	29°16'10.31S	16°52'24.77E	Erven
58	PORT NOLLOTH	3387	0	29°16'14.68S	16°52'26.69E	Erven
59	PORT NOLLOTH	3390	0	29°16'16.5S	16°52'28.67E	Erven
60	PORT NOLLOTH	3386	0	29°16'14.03S	16°52'26.23E	Erven
61	PORT NOLLOTH	3515	0	29°16'15.56S	16°52'30.09E	Erven
62	PORT NOLLOTH	3517	0	29°16'14.35S	16°52'28.68E	Erven
63	PORT NOLLOTH	3388	0	29°16'15.27S	16°52'27.25E	Erven
64	PORT NOLLOTH	3488	0	29°16'11.36S	16°52'26.71E	Erven
65	PORT NOLLOTH	3490	0	29°16'9.91S	16°52'26.36E	Erven
66	PORT NOLLOTH	3518	0	29°16'13.73S	16°52'28.06E	Erven
67	PORT NOLLOTH	3915	0	29°15'21.66S	16°52'5.32E	Erven
68	PORT NOLLOTH	2885	0	29°15'20.8S	16°52'5.41E	Erven
69	PORT NOLLOTH	3338	0	29°17'10.54S	16°52'42.57E	Erven
70	PORT NOLLOTH	3379	0	29°16'8.55S	16°52'24.05E	Erven
71	PORT NOLLOTH	3383	0	29°16'11.75S	16°52'25.03E	Erven
72	PORT NOLLOTH	3393	0	29°16'17.85S	16°52'30.79E	Erven
73	PORT NOLLOTH	3489	0	29°16'10.65S	16°52'26.53E	Erven
74	PORT NOLLOTH	3494	0	29°16'12.32S	16°52'27.16E	Erven
75	PORT NOLLOTH	3516	0	29°16'14.92S	16°52'29.37E	Erven
76	PORT NOLLOTH	1113	0	29°17'9.41S	16°52'42.99E	Erven
77	PORT NOLLOTH	1570	0	29°17'9.69S	16°52'42.48E	Erven
78	PORT NOLLOTH	2491	0	29°15'24.07S	16°52'6.95E	Erven
79	PORT NOLLOTH	2881	0	29°15'32.75S	16°52'8.82E	Erven
80	PORT NOLLOTH	2884	0	29°15'29.78S	16°52'7.77E	Erven
81	PORT NOLLOTH	3377	0	29°16'7.03S	16°52'23.26E	Erven
82	PORT NOLLOTH	3384	0	29°16'12.67S	16°52'25.47E	Erven
83	GARIES	174	0	29°20'38.59S	16°55'8.27E	Farm
84	TWEE PAD	176	0	29°27'42.18S	17°0'58.72E	Farm
85	SAND KOP	322	0	29°41'7.15S	17°8'7.81E	Farm
86	OUBEEP	173	0	29°22'52.17S	16°59'1E	Farm
87	PLAAS	155	0	29°17'21.59S	16°57'28.95E	Farm
88		625	0	28°37'30.05S	16°28'12.2E	Farm
89	KLEINZEE	654	0	29°38'12.04S	17°3'16.46E	Farm
90		1	0	28°53'44.69S	16°42'13.64E	Farm

91		175	0	29°32'28.1S	17°0'1.93E	Farm
92		1	9	28°40'10.41S	16°30'48.43E	Farm Portion
93	GARIES	174	0	29°20'36.92S	16°55'5.24E	Farm Portion
94		1	8	28°39'3.16S	16°29'12.4E	Farm Portion
95	SAND KOP	322	0	29°41'9.52S	17°8'8.14E	Farm Portion
96	KLEINZEE	654	0	29°41'38.67S	17°3'59.45E	Farm Portion
97	KLEINZEE	654	1	29°39'49.78S	17°3'9.82E	Farm Portion
98		625	0	28°37'31.27S	16°28'11.17E	Farm Portion
99		1	0	28°53'42.19S	16°42'13.69E	Farm Portion
100	PLAAS	155	0	29°17'23.36S	16°57'26.91E	Farm Portion
101	OUBEEP	173	0	29°22'53.7S	16°58'58.9E	Farm Portion
102		175	0	29°32'30.05S	17°0'5.33E	Farm Portion
103	TWEE PAD	176	0	29°27'44.24S	17°0'57.06E	Farm Portion
104	PORT NOLLOTH	1118	0	29°17'17.56S	16°52'44.19E	Public Place
105	PORT NOLLOTH	1566	0	29°16'53.69S	16°52'47.08E	Public Place

Development footprint<sup>1</sup> vertices:  
No development footprint(s) specified.

### Wind and Solar developments with an approved Environmental Authorisation or applications under consideration within 30 km of the proposed area

No	EIA Reference No	Classification	Status of application	Distance from proposed area (km)
1	14/12/16/3/3/2/624	Solar PV	Approved	24.5

### Environmental Management Frameworks relevant to the application

No intersections with EMF areas found.

### Environmental screening results and assessment outcomes

The following sections contain a summary of any development incentives, restrictions, exclusions or prohibitions that apply to the proposed development site as well as the most environmental sensitive features on the site based on the site sensitivity screening results for the application classification that was selected. The application classification selected for this report is:

**Mining | Exploration Right | Gas or Oil Marine.**

### Relevant development incentives, restrictions, exclusions or prohibitions

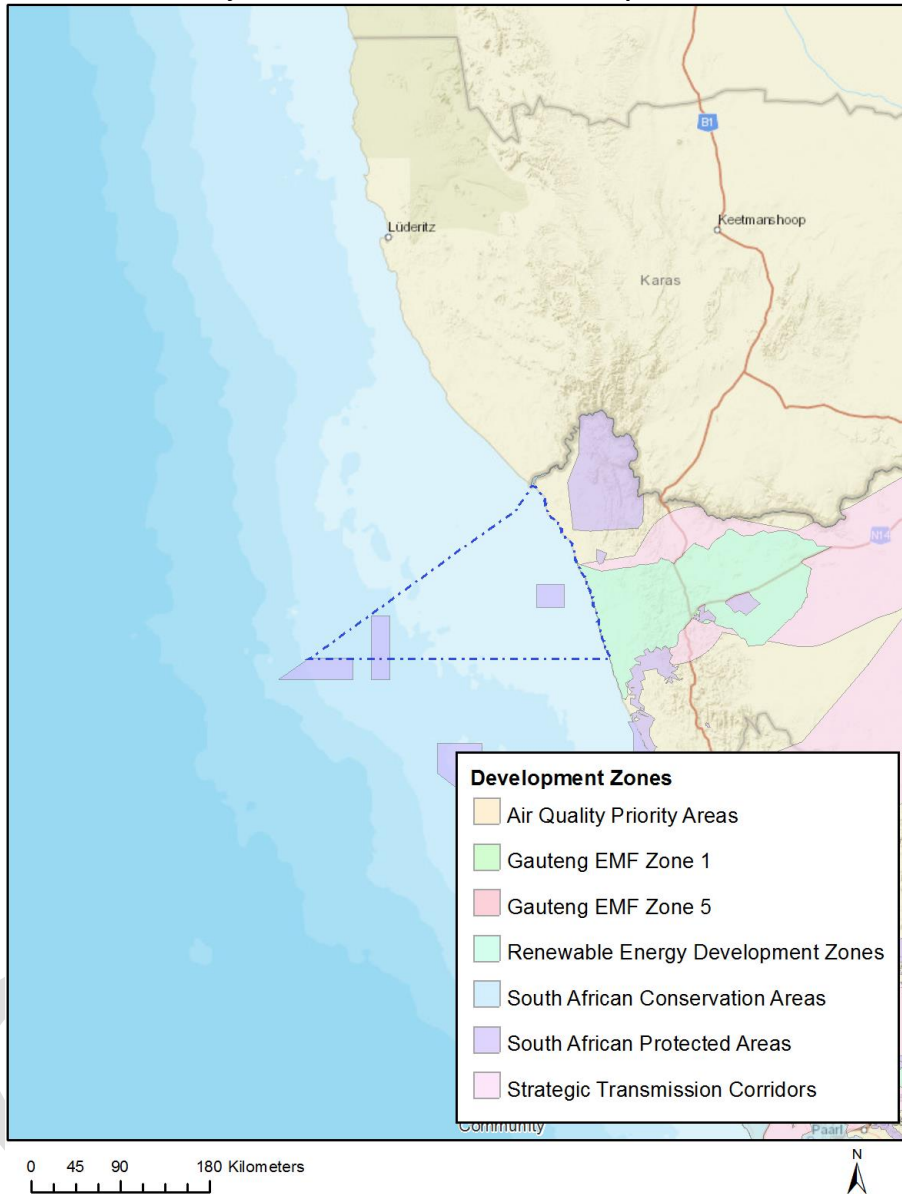
The following development incentives, restrictions, exclusions or prohibitions and their implications that apply to this site are indicated below.

<sup>1</sup> “development footprint”, means the area within the site on which the development will take place and includes all ancillary developments for example roads, power lines, boundary walls, paving etc. which require vegetation clearance or which will be disturbed and for which the application has been submitted.

Incentive, restriction or prohibition	Implication
Strategic Transmission Corridor-Northern corridor	<a href="https://screening.environment.gov.za/ScreeningDownloads/DevelopmentZones/GN11316February2018.pdf">https://screening.environment.gov.za/ScreeningDownloads/DevelopmentZones/GN11316February2018.pdf</a>
Renewable energy development zones 8-Springbok	<a href="https://screening.environment.gov.za/ScreeningDownloads/DevelopmentZones/GN114of16February2018.pdf">https://screening.environment.gov.za/ScreeningDownloads/DevelopmentZones/GN114of16February2018.pdf</a>
South African Protected Areas	<a href="https://screening.environment.gov.za/ScreeningDownloads/DevelopmentZones/SAPAD_OR_2020_Q3_Metadata.pdf">https://screening.environment.gov.za/ScreeningDownloads/DevelopmentZones/SAPAD_OR_2020_Q3_Metadata.pdf</a>
South African Conservation Areas	<a href="https://screening.environment.gov.za/ScreeningDownloads/DevelopmentZones/SACAD_OR_2020_Q3_Metadata.pdf">https://screening.environment.gov.za/ScreeningDownloads/DevelopmentZones/SACAD_OR_2020_Q3_Metadata.pdf</a>

Map indicating proposed development footprint within applicable development incentive, restriction, exclusion or prohibition zones

**Project Location: Block 1 Oil and Gas Exploration**



**Proposed Development Area Environmental Sensitivity**

The following summary of the development site environmental sensitivities is identified. Only the highest environmental sensitivity is indicated. The footprint environmental sensitivities for the proposed development footprint as identified, are indicative only and must be verified on site by a suitably qualified person before the specialist assessments identified below can be confirmed.

Theme	Very High sensitivity	High sensitivity	Medium sensitivity	Low sensitivity
Agriculture Theme			X	
Animal Species Theme		X		



Aquatic Biodiversity Theme	X			
Archaeological and Cultural Heritage Theme	X			
Civil Aviation Theme		X		
Defence Theme				X
Paleontology Theme	X			
Plant Species Theme			X	
Terrestrial Biodiversity Theme	X			

### Specialist assessments identified

Based on the selected classification, and the environmental sensitivities of the proposed development footprint, the following list of specialist assessments have been identified for inclusion in the assessment report. It is the responsibility of the EAP to confirm this list and to motivate in the assessment report, the reason for not including any of the identified specialist study including the provision of photographic evidence of the site situation.

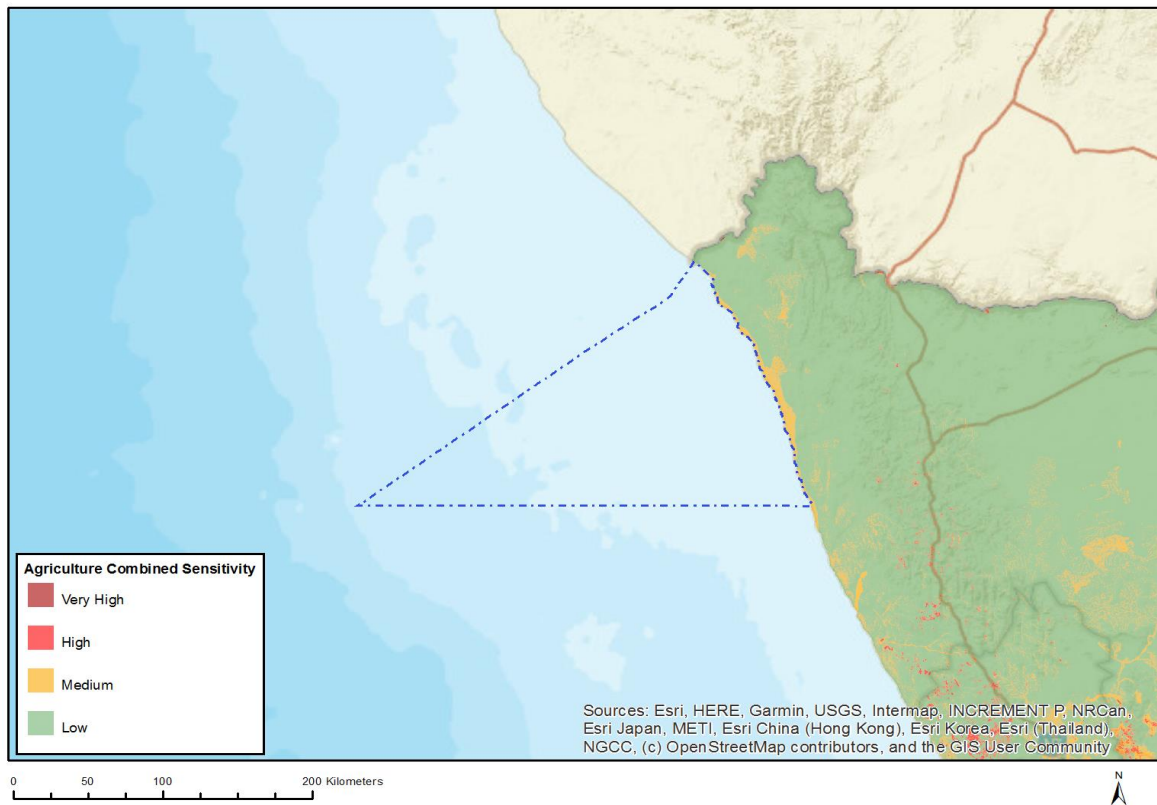
<b>No</b>	<b>Specialist assessment</b>	<b>Assessment Protocol</b>
1	Landscape/Visual Impact Assessment	<a href="https://screening.environment.gov.za/ScreeningDownloads/AssessmentProtocols/Gazetted_General_Requirement_Assessment_Protocols.pdf">https://screening.environment.gov.za/ScreeningDownloads/AssessmentProtocols/Gazetted_General_Requirement_Assessment_Protocols.pdf</a>
2	Aquatic Biodiversity Impact Assessment	<a href="https://screening.environment.gov.za/ScreeningDownloads/AssessmentProtocols/Gazetted_Aquatic_Biodiversity_Assessment_Protocols.pdf">https://screening.environment.gov.za/ScreeningDownloads/AssessmentProtocols/Gazetted_Aquatic_Biodiversity_Assessment_Protocols.pdf</a>
3	Marine Impact Assessment	<a href="https://screening.environment.gov.za/ScreeningDownloads/AssessmentProtocols/Gazetted_General_Requirement_Assessment_Protocols.pdf">https://screening.environment.gov.za/ScreeningDownloads/AssessmentProtocols/Gazetted_General_Requirement_Assessment_Protocols.pdf</a>
4	Avian Impact Assessment	<a href="https://screening.environment.gov.za/ScreeningDownloads/AssessmentProtocols/Gazetted_Avifauna_Assessment_Protocols.pdf">https://screening.environment.gov.za/ScreeningDownloads/AssessmentProtocols/Gazetted_Avifauna_Assessment_Protocols.pdf</a>
5	Defense Assessment	<a href="https://screening.environment.gov.za/ScreeningDownloads/AssessmentProtocols/Gazetted_Defence_Installations_Assessment_Protocols.pdf">https://screening.environment.gov.za/ScreeningDownloads/AssessmentProtocols/Gazetted_Defence_Installations_Assessment_Protocols.pdf</a>
6	Noise Impact Assessment	<a href="https://screening.environment.gov.za/ScreeningDownloads/AssessmentProtocols/Gazetted_Noise_Impacts_Assessment_Protocol.pdf">https://screening.environment.gov.za/ScreeningDownloads/AssessmentProtocols/Gazetted_Noise_Impacts_Assessment_Protocol.pdf</a>
7	Radioactivity Impact Assessment	<a href="https://screening.environment.gov.za/ScreeningDownloads/AssessmentProtocols/Gazetted_General_Requirement_Assessment_Protocols.pdf">https://screening.environment.gov.za/ScreeningDownloads/AssessmentProtocols/Gazetted_General_Requirement_Assessment_Protocols.pdf</a>
8	Traffic Impact Assessment	<a href="https://screening.environment.gov.za/ScreeningDownloads/AssessmentProtocols/Gazetted_General_Requirement_Assessment_Protocols.pdf">https://screening.environment.gov.za/ScreeningDownloads/AssessmentProtocols/Gazetted_General_Requirement_Assessment_Protocols.pdf</a>
9	Geotechnical Assessment	<a href="https://screening.environment.gov.za/ScreeningDownloads/AssessmentProtocols/Gazetted_General_Requirement_Assessment_Protocols.pdf">https://screening.environment.gov.za/ScreeningDownloads/AssessmentProtocols/Gazetted_General_Requirement_Assessment_Protocols.pdf</a>

	ent	
10	Climate Impact Assessment	<a href="https://screening.environment.gov.za/ScreeningDownloads/AssessmentProtocols/Gazetted_General_Requirement_Assessment_Protocols.pdf">https://screening.environment.gov.za/ScreeningDownloads/AssessmentProtocols/Gazetted_General_Requirement_Assessment_Protocols.pdf</a>
11	Health Impact Assessment	<a href="https://screening.environment.gov.za/ScreeningDownloads/AssessmentProtocols/Gazetted_General_Requirement_Assessment_Protocols.pdf">https://screening.environment.gov.za/ScreeningDownloads/AssessmentProtocols/Gazetted_General_Requirement_Assessment_Protocols.pdf</a>
12	Socio-Economic Assessment	<a href="https://screening.environment.gov.za/ScreeningDownloads/AssessmentProtocols/Gazetted_General_Requirement_Assessment_Protocols.pdf">https://screening.environment.gov.za/ScreeningDownloads/AssessmentProtocols/Gazetted_General_Requirement_Assessment_Protocols.pdf</a>
13	Ambient Air Quality Impact Assessment	<a href="https://screening.environment.gov.za/ScreeningDownloads/AssessmentProtocols/Gazetted_General_Requirement_Assessment_Protocols.pdf">https://screening.environment.gov.za/ScreeningDownloads/AssessmentProtocols/Gazetted_General_Requirement_Assessment_Protocols.pdf</a>
14	Air Quality Impact Assessment	<a href="https://screening.environment.gov.za/ScreeningDownloads/AssessmentProtocols/Gazetted_General_Requirement_Assessment_Protocols.pdf">https://screening.environment.gov.za/ScreeningDownloads/AssessmentProtocols/Gazetted_General_Requirement_Assessment_Protocols.pdf</a>
15	Seismicity Assessment	<a href="https://screening.environment.gov.za/ScreeningDownloads/AssessmentProtocols/Gazetted_General_Requirement_Assessment_Protocols.pdf">https://screening.environment.gov.za/ScreeningDownloads/AssessmentProtocols/Gazetted_General_Requirement_Assessment_Protocols.pdf</a>

## Results of the environmental sensitivity of the proposed area.

The following section represents the results of the screening for environmental sensitivity of the proposed site for relevant environmental themes associated with the project classification. It is the duty of the EAP to ensure that the environmental themes provided by the screening tool are comprehensive and complete for the project. Refer to the disclaimer.

### MAP OF RELATIVE AGRICULTURE THEME SENSITIVITY

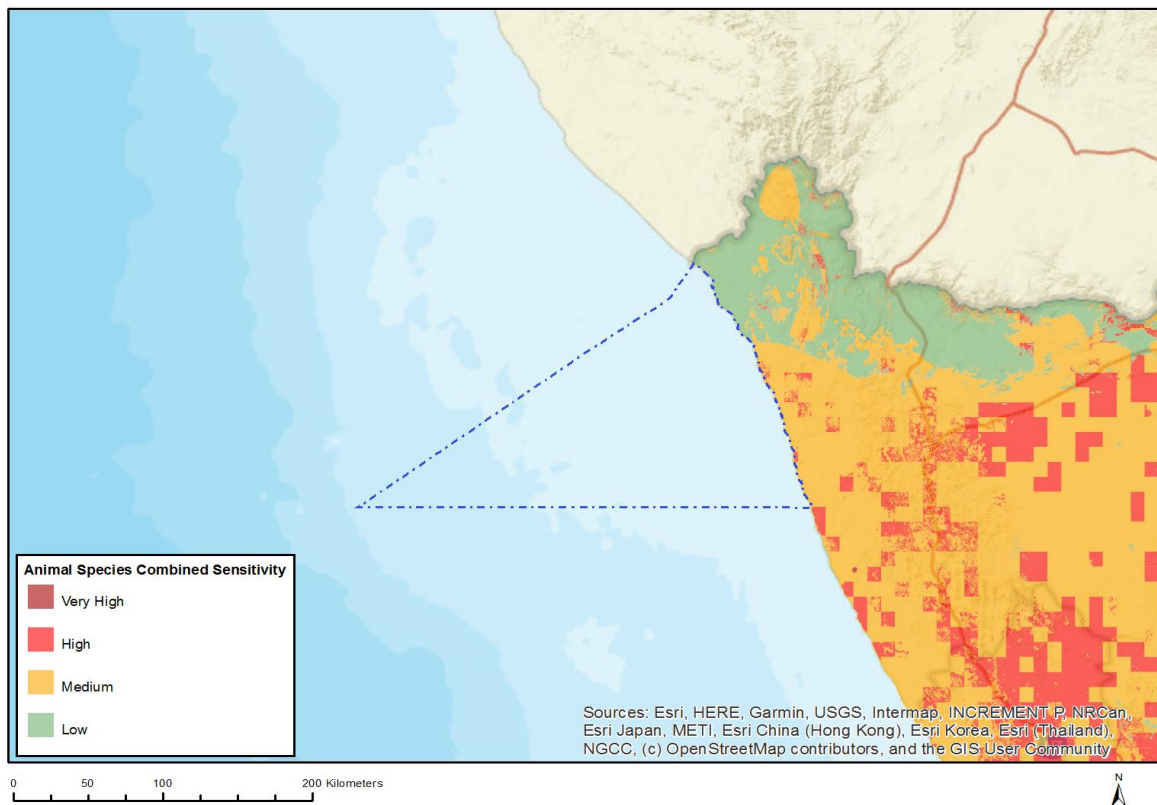


Very High sensitivity	High sensitivity	Medium sensitivity	Low sensitivity
		X	

#### Sensitivity Features:

Sensitivity	Feature(s)
Low	Land capability;01. Very low/02. Very low/03. Low-Very low/04. Low-Very low/05. Low
Medium	Land capability;06. Low-Moderate/07. Low-Moderate/08. Moderate

## MAP OF RELATIVE ANIMAL SPECIES THEME SENSITIVITY



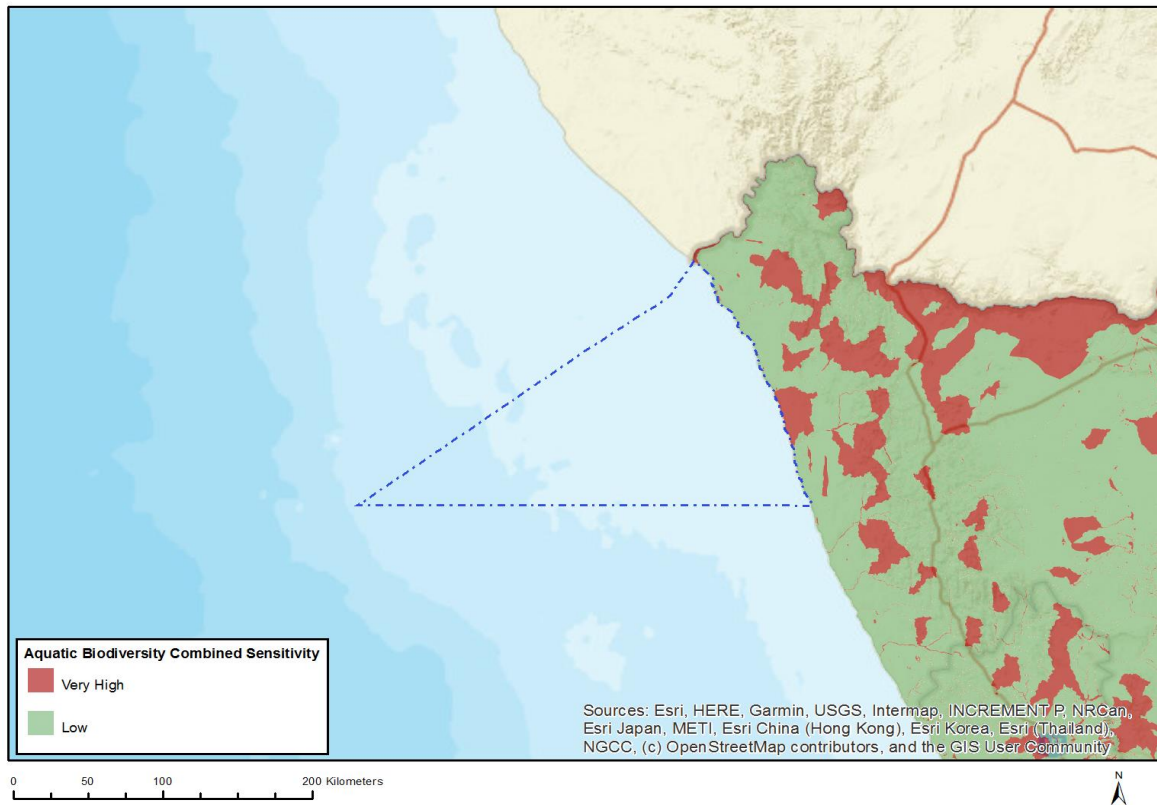
Where only a sensitive plant unique number or sensitive animal unique number is provided in the screening report and an assessment is required, the environmental assessment practitioner (EAP) or specialist is required to email SANBI at [eiadatarequests@sanbi.org.za](mailto:eiadatarequests@sanbi.org.za) listing all sensitive species with their unique identifiers for which information is required. The name has been withheld as the species may be prone to illegal harvesting and must be protected. SANBI will release the actual species name after the details of the EAP or specialist have been documented.

Very High sensitivity	High sensitivity	Medium sensitivity	Low sensitivity
	X		

### Sensitivity Features:

Sensitivity	Feature(s)
High	Aves-Circus maurus
High	Insecta-Chrysoritis trimeni
Low	Low sensitivity
Medium	Insecta-Chrysoritis trimeni
Medium	Invertebrate-Peringueyacris namaqua
Medium	Invertebrate-Brinckiella mauerbergerorum
Medium	Mammalia-Cryptochloris wintoni
Medium	Aves-Circus maurus

## MAP OF RELATIVE AQUATIC BIODIVERSITY THEME SENSITIVITY

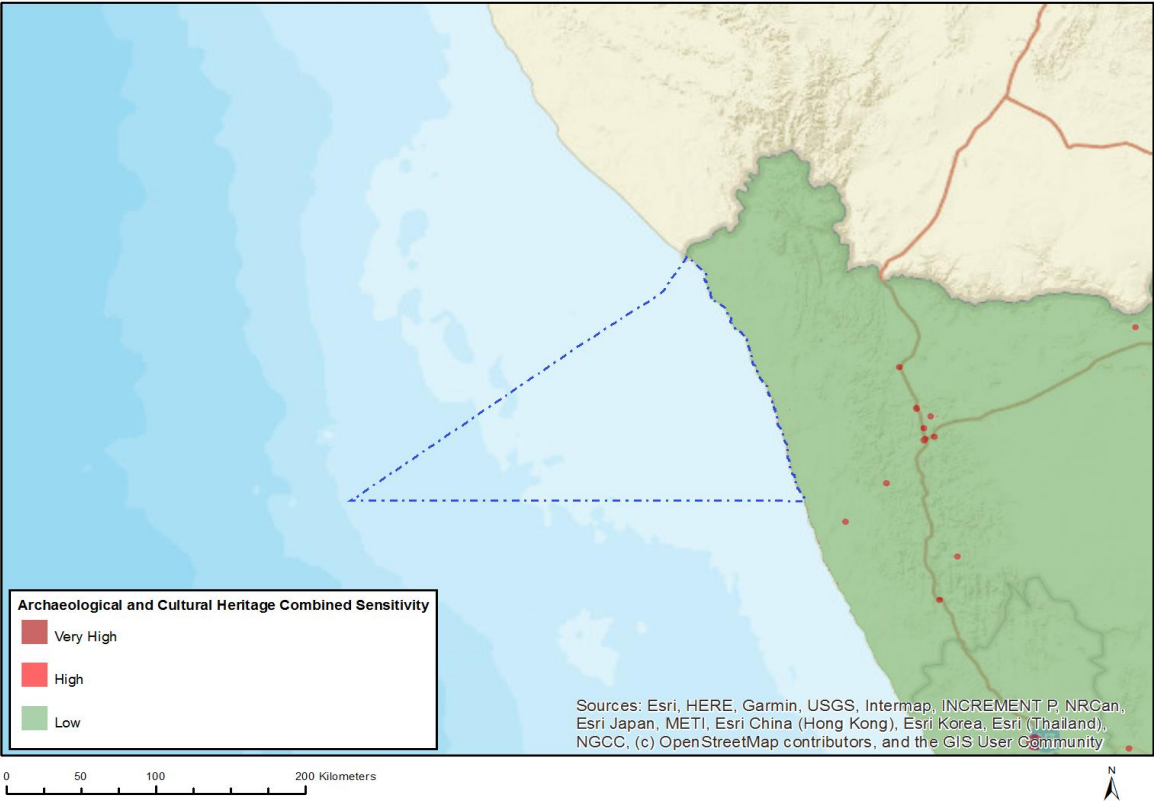


Very High sensitivity	High sensitivity	Medium sensitivity	Low sensitivity
X			

### Sensitivity Features:

Sensitivity	Feature(s)
Low	Low sensitivity
Very High	Wetlands and Estuaries
Very High	Freshwater ecosystem priority area quinary catchments

# MAP OF RELATIVE ARCHAEOLOGICAL AND CULTURAL HERITAGE THEME SENSITIVITY

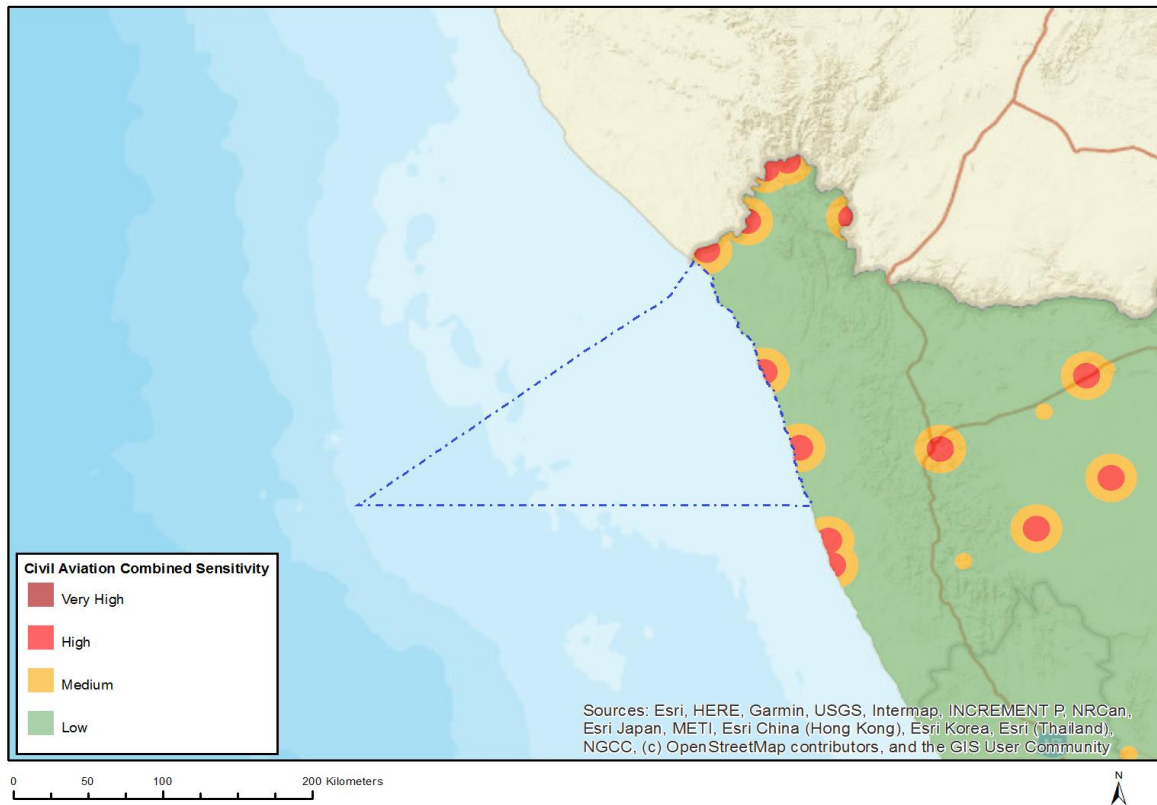


Very High sensitivity	High sensitivity	Medium sensitivity	Low sensitivity
X			

**Sensitivity Features:**

Sensitivity	Feature(s)
High	Within 100m of a Grade IIIb Heritage site
High	Within 50m of a Grade IIIc Heritage site
Low	Low sensitivity
Very High	Within 100m of an Ungraded Heritage site

## MAP OF RELATIVE CIVIL AVIATION THEME SENSITIVITY

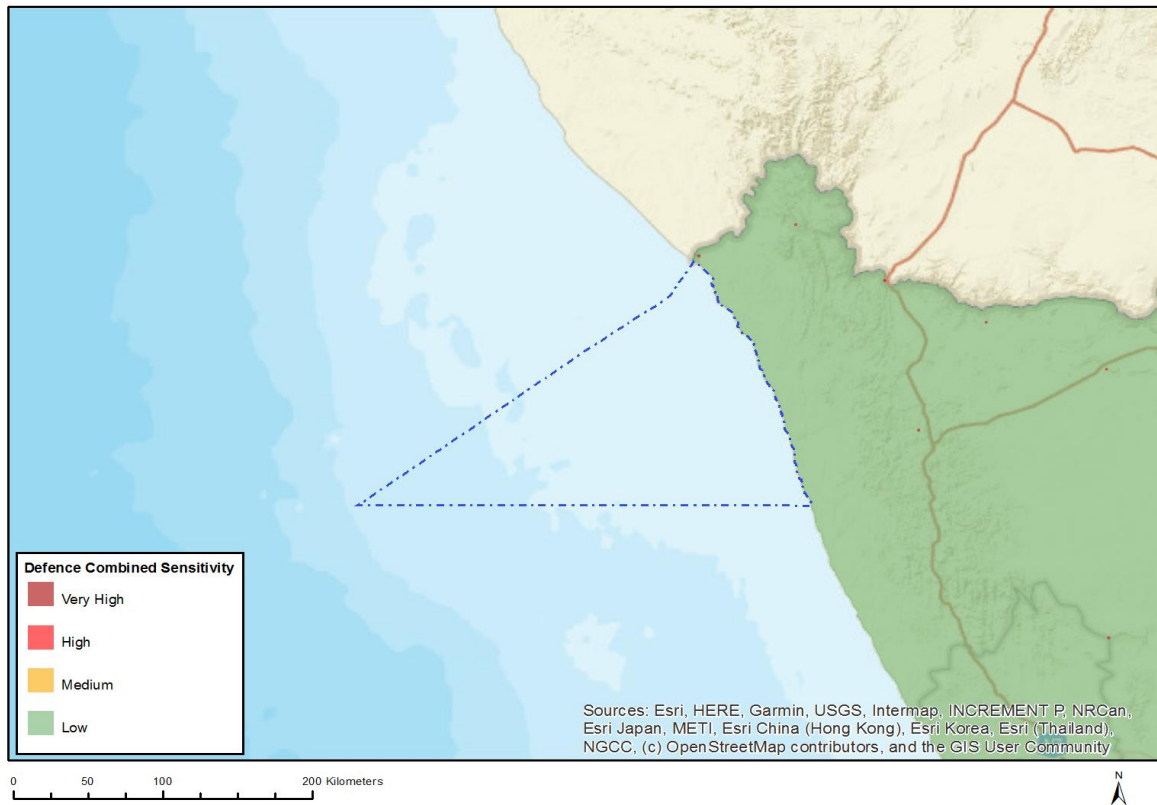


Very High sensitivity	High sensitivity	Medium sensitivity	Low sensitivity
	X		

### Sensitivity Features:

Sensitivity	Feature(s)
High	Within 8 km of other civil aviation aerodrome
High	Dangerous and restricted airspace as demarcated
Low	Low sensitivity
Medium	Between 8 and 15 km of other civil aviation aerodrome

## MAP OF RELATIVE DEFENCE THEME SENSITIVITY



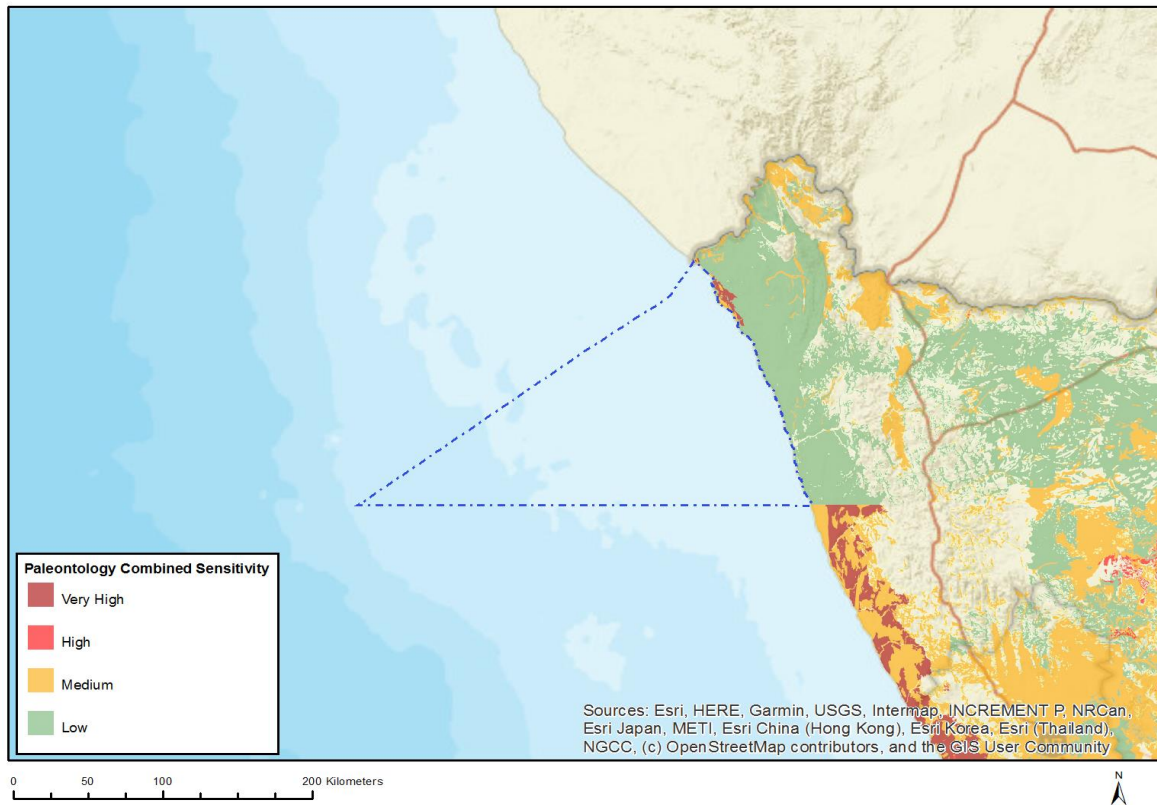
Very High sensitivity	High sensitivity	Medium sensitivity	Low sensitivity
			X

### Sensitivity Features:

Sensitivity	Feature(s)
Low	Low Sensitivity



## MAP OF RELATIVE PALEONTOLOGY THEME SENSITIVITY

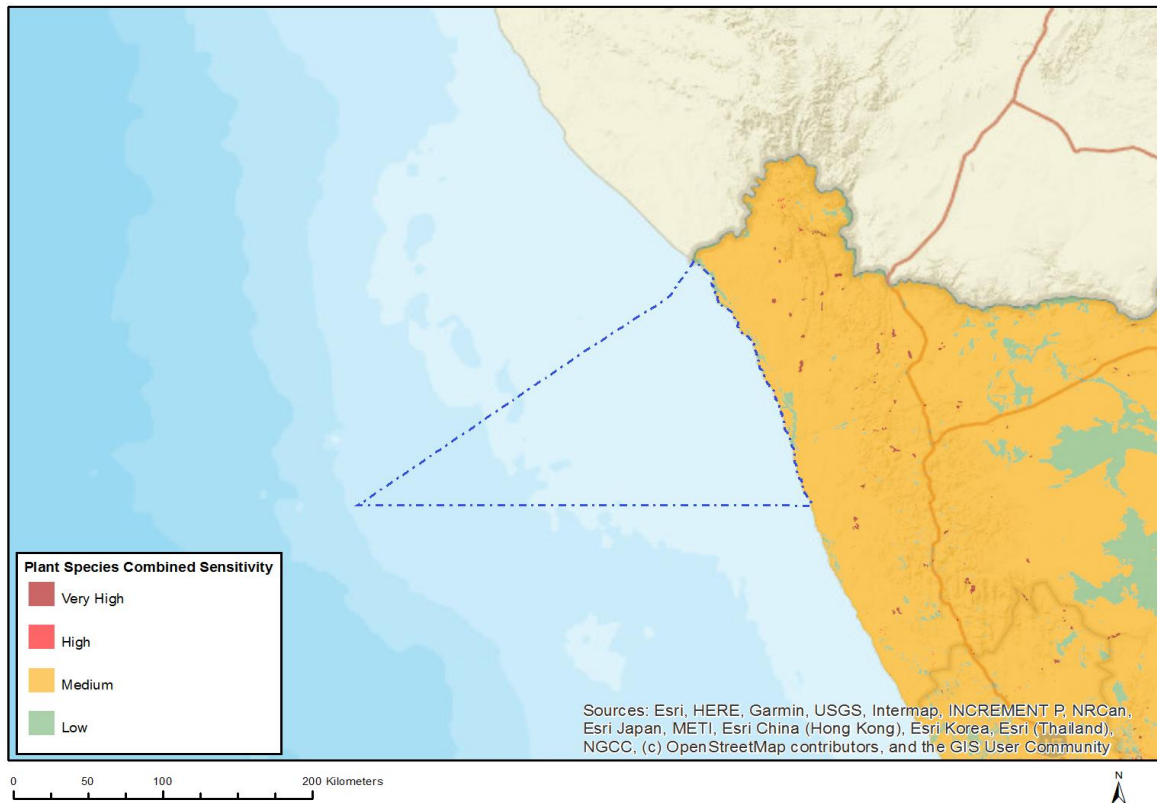


Very High sensitivity	High sensitivity	Medium sensitivity	Low sensitivity
X			

### Sensitivity Features:

Sensitivity	Feature(s)
Low	Features with a Low paleontological sensitivity
Medium	Features with a Medium paleontological sensitivity
Very High	Features with a Very High paleontological sensitivity

## MAP OF RELATIVE PLANT SPECIES THEME SENSITIVITY



Where only a sensitive plant unique number or sensitive animal unique number is provided in the screening report and an assessment is required, the environmental assessment practitioner (EAP) or specialist is required to email SANBI at [eiadatarequests@sanbi.org.za](mailto:eiadatarequests@sanbi.org.za) listing all sensitive species with their unique identifiers for which information is required. The name has been withheld as the species may be prone to illegal harvesting and must be protected. SANBI will release the actual species name after the details of the EAP or specialist have been documented.

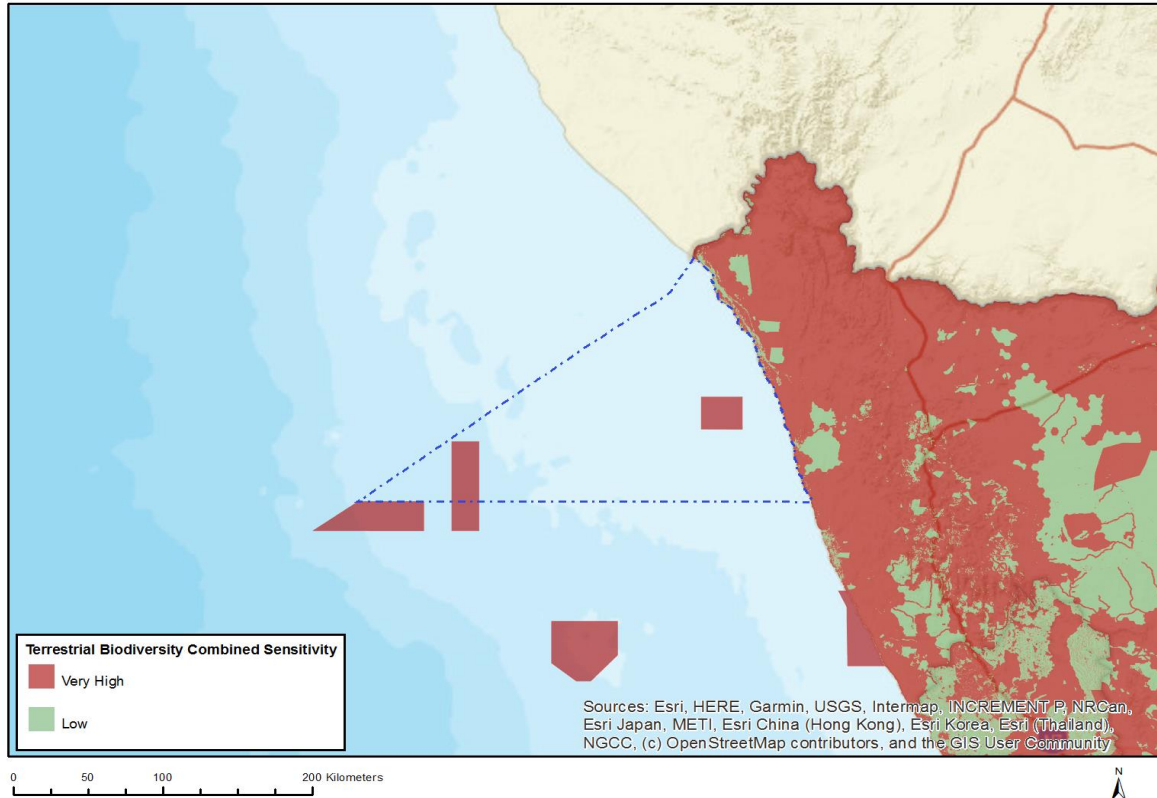
Very High sensitivity	High sensitivity	Medium sensitivity	Low sensitivity
		X	

### Sensitivity Features:

Sensitivity	Feature(s)
Low	Low Sensitivity
Medium	Leipoldtia frutescens
Medium	Wooleya farinosa
Medium	Cephalophyllum tetrastichum
Medium	Manulea cinerea
Medium	Sensitive species 827
Medium	Sensitive species 590
Medium	Sensitive species 734
Medium	Tetragonia pillansii
Medium	Sensitive species 407
Medium	Sensitive species 1110
Medium	Leucoptera nodosa
Medium	Bassia dinteri
Medium	Sensitive species 1158
Medium	Sensitive species 720

Medium	Sensitive species 305
Medium	Sensitive species 1187
Medium	Calobota acanthoclada
Medium	Argyrobium velutinum
Medium	Helichrysum dunense
Medium	Adromischus montium-klinghardtii

## MAP OF RELATIVE TERRESTRIAL BIODIVERSITY THEME SENSITIVITY



Very High sensitivity	High sensitivity	Medium sensitivity	Low sensitivity
X			

### Sensitivity Features:

Sensitivity	Feature(s)
Low	Low Sensitivity
Very High	Critical Biodiversity Area 1
Very High	Critical Biodiversity Area 2
Very High	Freshwater ecosystem priority area quinary catchments
Very High	Focus Areas for land-based protected areas expansion
Very High	Vulnerable ecosystem
Very High	South African Protected Areas