

**BASIC ASSESSMENT PROCESS FOR THE PROPOSED BRYANSTON EXTENSION 3B HOUSING DEVELOPMENT, CITY OF JOHANNESBURG METROPOLITAN MUNICIPALITY, GAUTENG PROVINCE
SITE NOTICES PLACED ON THE 22ND OF JANUARY 2020**

A2 notice boards were placed at various locations around and within close proximity to the site on the 22nd of January 2020. These locations are represented in **Figure 1**:

- Entrance of Ferndale Arboretum on Cork Avenue (Site Notice 1);
- Intersection of Cork Avenue and Poplar Street (Site Notice 2);
- Close to the rock outcrop along Cork Avenue (Site Notice 3); and
- Corner Cork Avenue and Spruce Street (Site Notice 3).

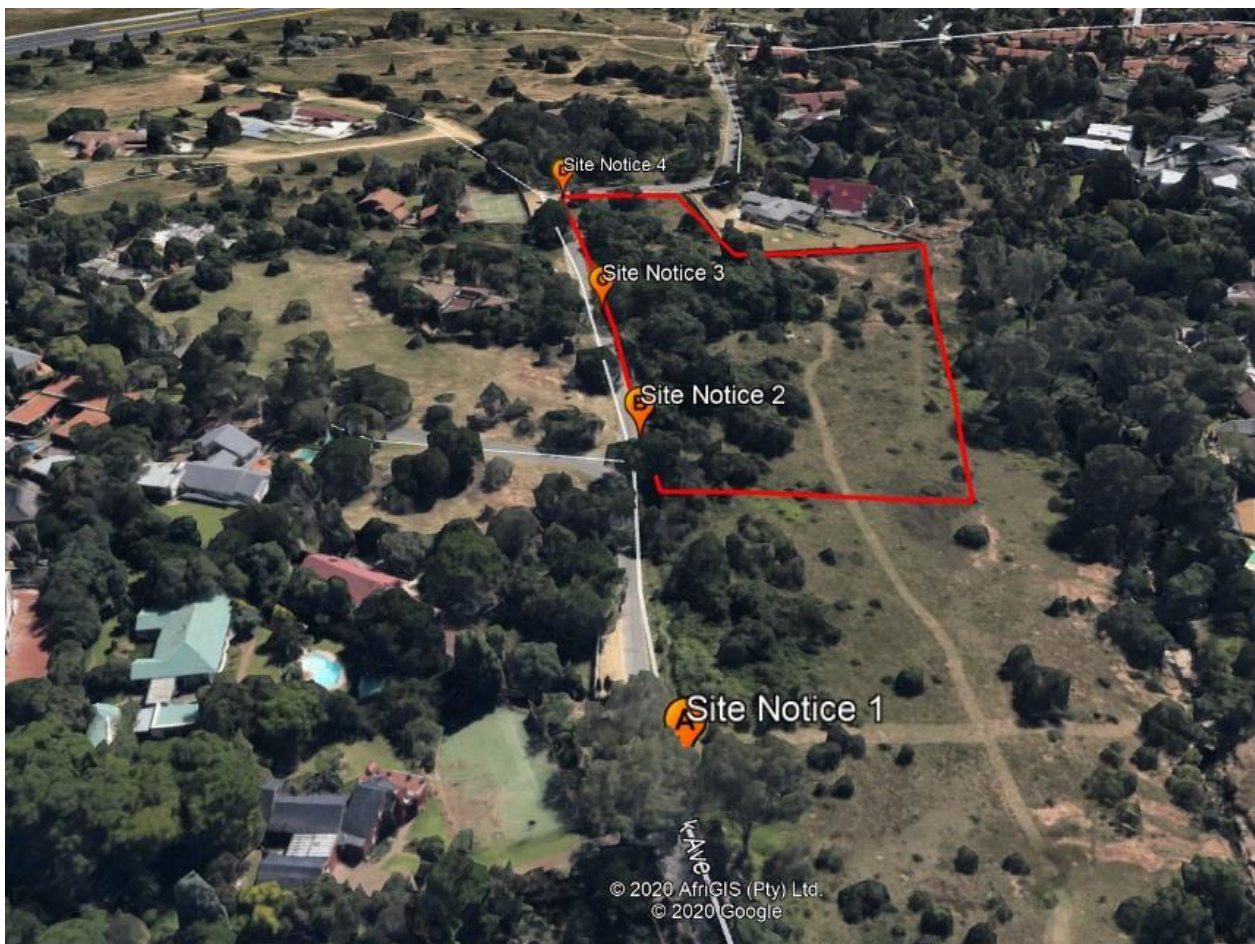


Figure 1: Locations of the placement of site notices



Site Notice 1: Entrance of Ferndale Arboretum on Cork Avenue
 Site Coordinates: 26°04'10.74"S; 27°58'55.16"E



Site Notice 2: Intersection of Cork Avenue and Poplar Street
 Coordinates: 26°04'07.18"S; 27°58'54.70"E



Site Notice 3: Close to the rock outcrop along Cork Avenue
 Coordinates: 26°04'04.83"S; 27°58'54.20"E





Site Notice 4: Corner Cork Avenue and Spruce Street
Coordinates: 26°04'02.04"S; 27°58'53.53"E