

BASIC ASSESSMENT PROCESS FOR THE PROPOSED EFFLUENT EVAPORATION PONDS, LOUTERWATER, EASTERN CAPE

BACKGROUND INFORMATION DOCUMENT



MARW/NELK

BID No: 501573

MAY 2016

PURPOSE OF THIS DOCUMENT

This Background Information Document (BID) serves as notice (in terms of regulation 41(2) published in Government Gazette No. R982 under Section 24(5) of the National Environmental Management Act 107 of 1998), of the intent to develop additional effluent evaporation ponds at Louterwater, Eastern Cape Province.

This document will provide you with a brief description of the proposed project and the Basic Assessment (BA) Process that will be followed, as well as give you the opportunity to:

- **Register as an Interested and Affected Party (IAP); and**

Notifications regarding the process and the availability of reports will only be sent to registered IAPs; and

- **Provide initial comments on any environmental, social and economic issue relating to the proposed development.**

During the BA Process which will be followed, issues of concern and potential environmental and social impacts will be evaluated. Your comments will ensure that relevant issues are evaluated and will form part of the BA.

You are hereby invited to register your interest in the proposed activity and provide your input by completing the Registration & Comment Form at the end of this document and sending it (either via email, post or fax) to:

Wanda Marais

SRK Consulting

Postal address: P O Box 21842, Port Elizabeth, 6000

Fax: (041) 509 4850; E-mail: wmarais@srk.co.za

Your comments must reach SRK Consulting by **12:00 on 13 June 2016**, to ensure that they will be included and addressed in the draft report. You may however, request to be registered as an IAP at any time during the BA Process.

DESCRIPTION OF THE DEVELOPMENT

An integrated BA and Waste Management License application has commenced to assist the proponent, Granor Passi (Pty) Ltd., in determining the extent and significance of the environmental consequences associated with the proposed construction of effluent evaporation ponds for their plant at Louterwater, where juice concentrate is extracted.

At present, effluent from the various processes is collected and pumped to the existing effluent evaporation ponds located approximately 1.5 km north-east of the plant.

The existing effluent evaporation ponds are operational, however routine maintenance cannot be carried out as no alternative system to dispose of effluent is in place. The construction of additional effluent evaporation ponds is proposed to function in a duty/ standby configuration to allow for maintenance to be carried out when required. The proposed site is located on Portion 3 and Portion 10 of the Farm Grootkloof No. 301 to the north-east of Louterwater, which is situated along the R62.

LEGAL REQUIREMENTS

The environmental authorisation process prescribed for listed activities under Listing Notices 1, 2 and 3 published in Government Gazette Numbers R983, R984 and R985 respectively and the waste licensing process for listed activities contained in the Schedule in Government Notice 921, 2013, published in terms of section 19 of the National Environmental Management: Waste Act (Act No. 59 of 2008) (NEMWA) are defined in the Environmental Impact Assessment (EIA) Regulations made under section 24(5) of the National Environmental Management Act, 2008 (Act No. 107 of 1998) (NEMA).

Activities 12, 19 and 25, listed in GN R983 (Listing Notice 1) of the NEMA EIA regulations and Activity 1 of Category A, listed in GN R921 of under NEMWA, are the main activities associated with the proposed project, calling for an Integrated Environmental Authorisation process to be followed:

LN1 GN R983 (12) The development of (xii) infrastructure or structures with a physical footprint of 100 square

metres or more where such development occurs
(a) within a watercourse...

LN1 GNR983 (19) The infilling or depositing of any material of more than 5 cubic metres into, or the dredging, excavation, removal or moving of soil, sand, shells, shell grit, pebbles or rock of more than 5 cubic metres from (i) a watercourse...

LN1 GNR983 (27): The clearing of an area of 1 hectares or more, but less than 20 hectares of indigenous vegetation...

GN R.921 Item 1 Category A: The storage of general waste in lagoons.

WHAT IS A BASIC ASSESSMENT?

A Basic Assessment is a planning and decision-making tool used to identify the environmental and social consequences of a proposed project, before the development takes place.

The BA needs to show the environmental authorities (DEDEAT) and the proponent (Granor Passi (Pty) Ltd.) what potential environmental, economic and social impacts can be expected from the proposed activity. Public issues and concerns must therefore be identified so that these can be evaluated. If required, the authorities will request that a full EIA be done to determine the extent of those impacts. In the case where an activity will have minimal impact on the environment, the authorities may grant authorisation based on the Basic Assessment Report.

PUBLIC PARTICIPATION

Public participation is the cornerstone of the Environmental Impact Assessment process. The principles of the National Environmental Management Act (NEMA) govern most aspects of Basic Assessments, including public participation. These include the ongoing provision of sufficient information (in a transparent manner) to Interested and Affected Parties (IAPs).

During the Public Participation Process, input from the proponent, technical experts, government authorities and the general public will be gathered to result in a better understanding of the project for all involved, and more informed decision-making throughout the process.

IAPs will be given the opportunity to comment on the findings of the draft Basic Assessment Report and findings of any Specialist studies during the specified comment period.

To receive further communications regarding the development, please register by sending the completed and signed registration sheet at the back of this document, together with your contact details and nature of interest, to SRK Consulting.

BASIC ASSESSMENT PROCESS

Who is doing the Basic Assessment?

In terms of the Environmental Impact Assessment (EIA) regulations, an independent Environmental Assessment Practitioner must be appointed to conduct the Basic Assessment. SRK Consulting has been appointed to conduct the Basic Assessment. SRK will identify and assess the potential environmental impacts associated with the proposed activity by conducting an objective and independent Basic Assessment in which all the relevant information and opinions of Interested and Affected Parties (IAPs) will be collected and passed on to DEDEAT. In this way an informed decision-making process can take place.

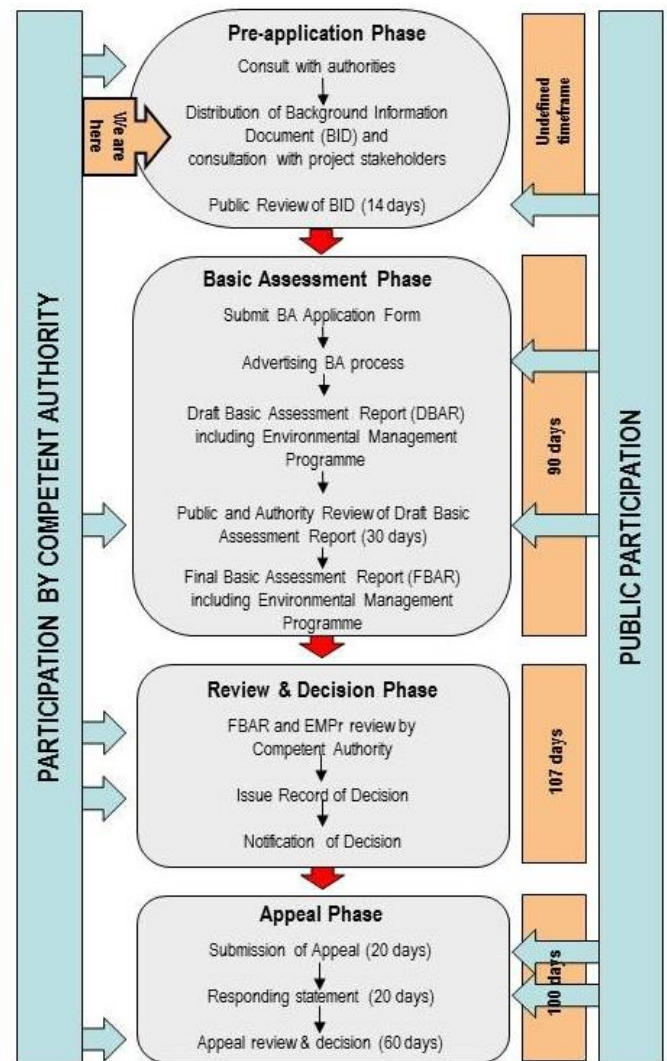
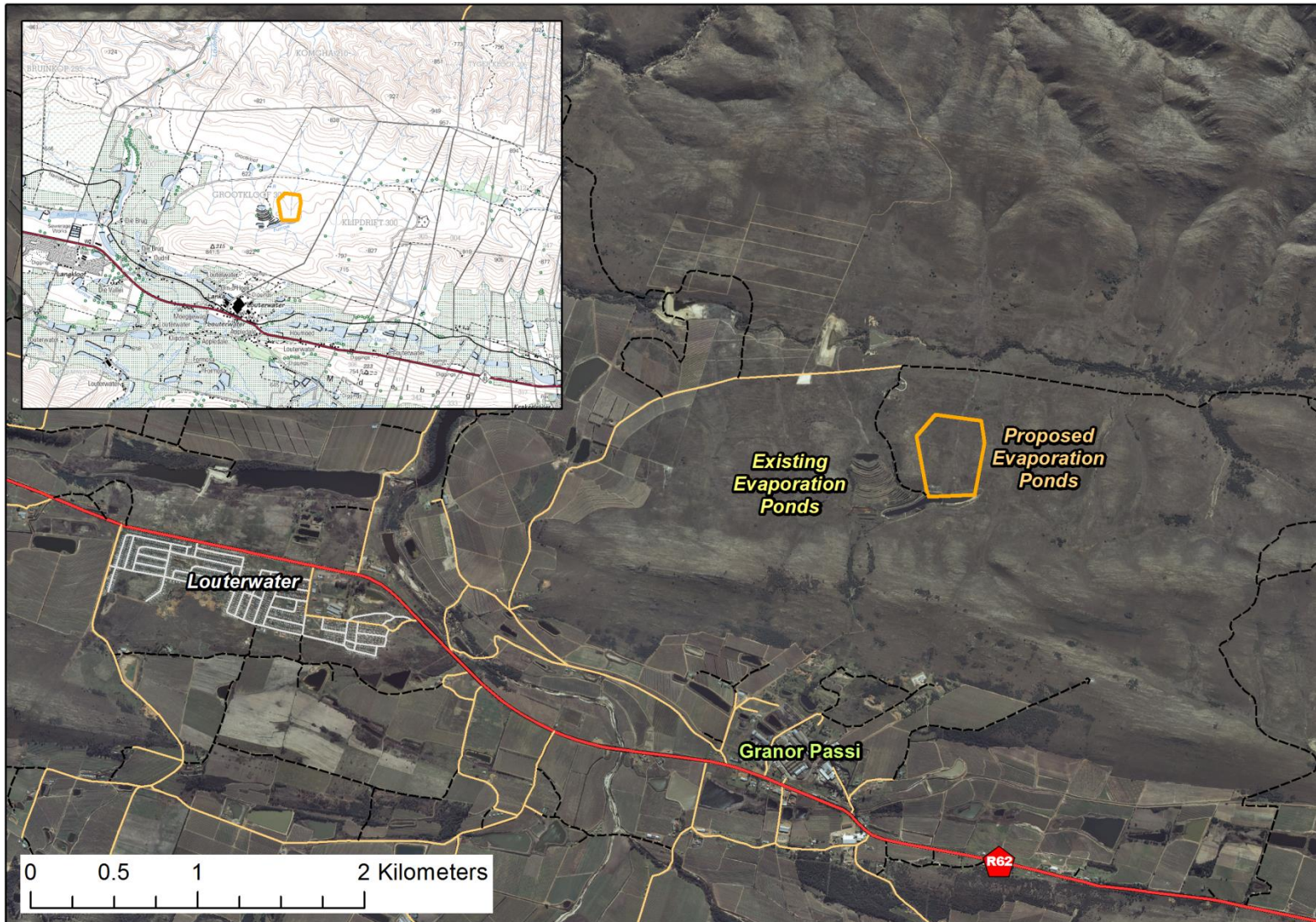


Figure 1: The Basic Assessment Process and stages where public comment will be invited



Scale: 1:33 238		A4
Projection: TM	Datum: HH94	
Central Meridian/Zone: Lo23		
Date: 04/05/2016	Compiled by: VERJ	
Project No. 501573	Fig No. 001	



Granor Passi
Locality

Path: G:\Projects\Current\501573 Granor Passi Evaporation Ponds_MEIR\8GIS\GISPROJ\MXD\501573_Granor_Passi_Locality_21Apr2016.mxd

Revision: A Date: 00 00 2013

Figure 2: Location of the proposed effluent evaporation ponds



Ground Floor, Bay Suites
 1a Humewood Rd,
 Humerail
 Port Elizabeth, 6001
 P O Box 21842
 Port Elizabeth 6000
 South Africa
 T: +27 (0) 41 509 4800
 F: +27 (0) 41 509 4850
 E: portelizabeth@srk.co.za
www.srk.co.za



REGISTRATION & COMMENT SHEET

BASIC ASSESSMENT PROCESS FOR THE PROPOSED EFFLUENT EVAPORATION PONDS FOR GRANOR PASSI, LOUWERWATER, EASTERN CAPE

Attention: **Wanda Marais**

Fax no: **041 509 4850**

Email: wmarais@srk.co.za

I wish to register as an Interested and Affected party and/or bring to the attention of SRK Consulting the following comments.

Contact Information:	
Title:	Name:
Organisation:	Nature of Interest*:
Postal Address:	Telephone Number:
	Facsimile Number**:
	Mobile Number:
	Email**:

*The NEMA EIA Regulations, 2014, require that an IAP discloses any direct business, financial, personal or other interest in the approval or refusal of the application.
 **Preferred method of communication. The absence of email / facsimile facilities may result in a delay in receipt of IAP notifications. Please write clearly.

Comments (please use additional sheets of paper if required):

Signed: _____

Date: _____

Thank you for your participation