

**SCREENING REPORT FOR AN ENVIRONMENTAL AUTHORIZATION AS
REQUIRED BY THE 2014 EIA REGULATIONS – PROPOSED SITE
ENVIRONMENTAL SENSITIVITY**

EIA Reference number:

Project name: Harmony Mispah TSF Reclam and Pipelines

Project title: Harmony Mispah TSF Reclam and Pipelines

Date screening report generated: 11/11/2022 09:55:46

Applicant: Chemwes (Pty) Ltd

Compiler: Ayabulela Manjezi

Compiler signature:


.....

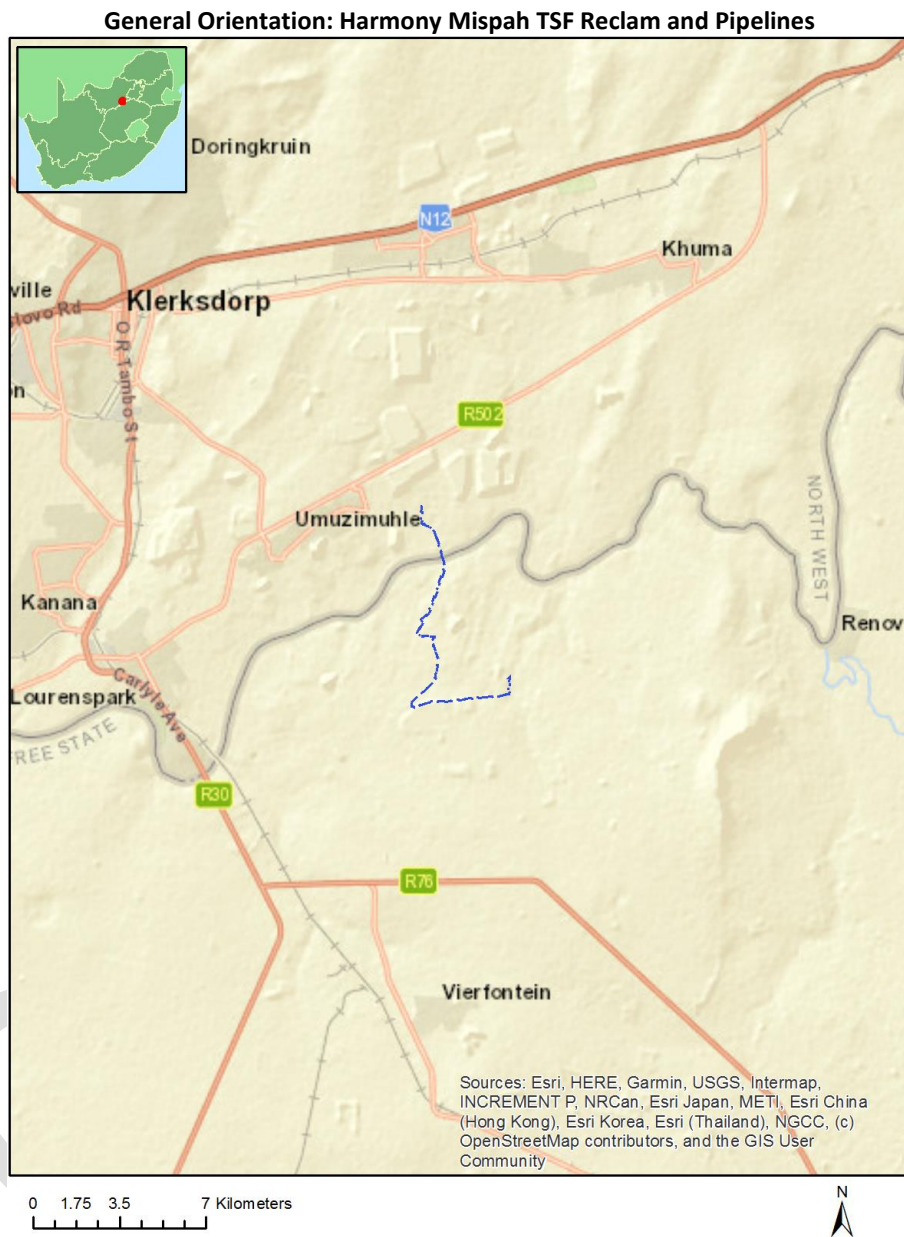
Application Category: Utilities Infrastructure | Pipelines | Water | Waste Water

Table of Contents

Proposed Project Location	3
Orientation map 1: General location	3
Map of proposed site and relevant area(s)	4
Cadastral details of the proposed site	4
Wind and Solar developments with an approved Environmental Authorisation or applications under consideration within 30 km of the proposed area	5
Environmental Management Frameworks relevant to the application	5
Environmental screening results and assessment outcomes	6
Relevant development incentives, restrictions, exclusions or prohibitions	6
Map indicating proposed development footprint within applicable development incentive, restriction, exclusion or prohibition zones	7
Proposed Development Area Environmental Sensitivity	7
Specialist assessments identified	8
Results of the environmental sensitivity of the proposed area	10
MAP OF RELATIVE AGRICULTURE THEME SENSITIVITY	10
MAP OF RELATIVE ANIMAL SPECIES THEME SENSITIVITY	11
MAP OF RELATIVE AQUATIC BIODIVERSITY THEME SENSITIVITY	12
MAP OF RELATIVE ARCHAEOLOGICAL AND CULTURAL HERITAGE THEME SENSITIVITY	13
MAP OF RELATIVE CIVIL AVIATION THEME SENSITIVITY	14
MAP OF RELATIVE DEFENCE THEME SENSITIVITY	15
MAP OF RELATIVE PALEONTOLOGY THEME SENSITIVITY	16
MAP OF RELATIVE PLANT SPECIES THEME SENSITIVITY	17
MAP OF RELATIVE TERRESTRIAL BIODIVERSITY THEME SENSITIVITY	18

Proposed Project Location

Orientation map 1: General location



Map of proposed site and relevant area(s)



Cadastral details of the proposed site

Property details:

No	Farm Name	Farm/ Erf No	Portion	Latitude	Longitude	Property Type
1	DOORNKOMWEST	446	0	26°58'0.38S	26°46'12.23E	Farm
2	HOEKPLAATS	598	0	26°59'17.15S	26°48'20.73E	Farm
3	ZUIPING	394	0	26°57'51.65S	26°47'11.36E	Farm
4	CHRYSTALKOP	69	0	26°57'53.82S	26°46'37.6E	Farm
5	MISPAH	274	0	26°59'44.44S	26°46'58.42E	Farm
6	MODDERFONTEIN	440	0	26°55'13.68S	26°45'41.88E	Farm
7	MISPAH	274	0	26°59'43.73S	26°47'3.14E	Farm Portion
8	CHRYSTALKOP	69	0	26°57'53.82S	26°46'37.6E	Farm Portion
9	ZUIPING	394	1	26°57'51.62S	26°46'55.18E	Farm Portion
10	HOEKPLAATS	598	0	26°59'19.08S	26°48'23.51E	Farm Portion
11	MODDERFONTEIN	440	4	26°55'36.22S	26°45'39.45E	Farm Portion
12	DOORNKOMWEST	446	0	26°58'0.38S	26°46'12.23E	Farm Portion

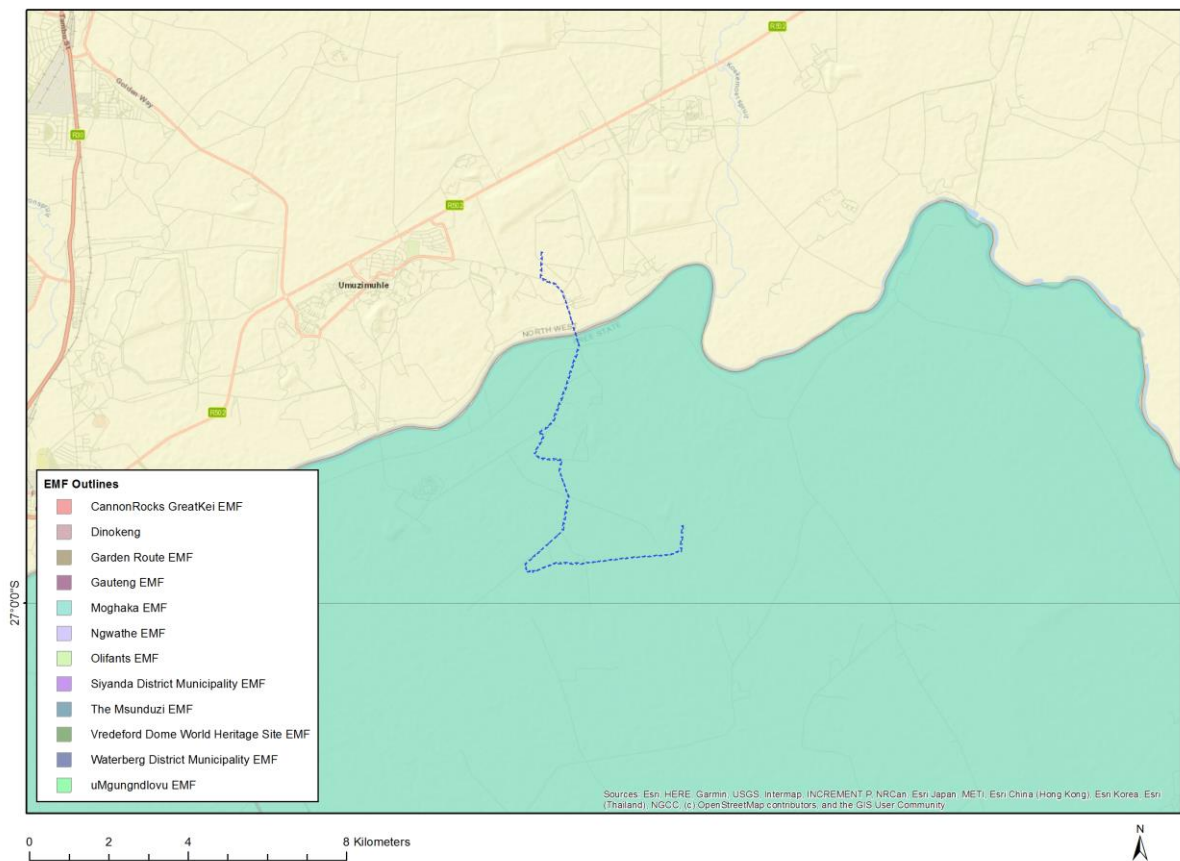
Development footprint¹ vertices:
No development footprint(s) specified.

¹ “development footprint”, means the area within the site on which the development will take place and includes all ancillary developments for example roads, power lines, boundary walls, paving etc. which require vegetation clearance or which will be disturbed and for which the application has been submitted.

Wind and Solar developments with an approved Environmental Authorisation or applications under consideration within 30 km of the proposed area

No	EIA Reference No	Classification	Status of application	Distance from proposed area (km)
1	12/12/20/2513/3	Solar PV	Approved	3.4
2	14/12/16/3/3/2/778	Solar PV	Approved	8.1
3	12/12/20/2513/1	Solar PV	Approved	3.4
4	12/12/20/2513/2	Solar PV	Approved	5.5
5	14/12/16/3/3/2/954	Solar PV	Approved	20.7
6	12/12/20/2513/1/AM3	Solar PV	Approved	3.4
7	14/12/16/3/3/2/777	Solar PV </td <td>Approved</td> <td>5.7</td>	Approved	5.7
8	12/12/20/2513/4	Solar PV	Approved	3.4

Environmental Management Frameworks relevant to the application



Environment al Management Framework	LINK
Moghaka EMF	https://screening.environment.gov.za/ScreeningDownloads/EMF/Moghaka_LM_EMF - Final EMF Report Rev2013-06.pdf

Environmental screening results and assessment outcomes

The following sections contain a summary of any development incentives, restrictions, exclusions or prohibitions that apply to the proposed development site as well as the most environmental sensitive features on the site based on the site sensitivity screening results for the application classification that was selected. The application classification selected for this report is:

Utilities Infrastructure | Pipelines | Water | Waste Water.

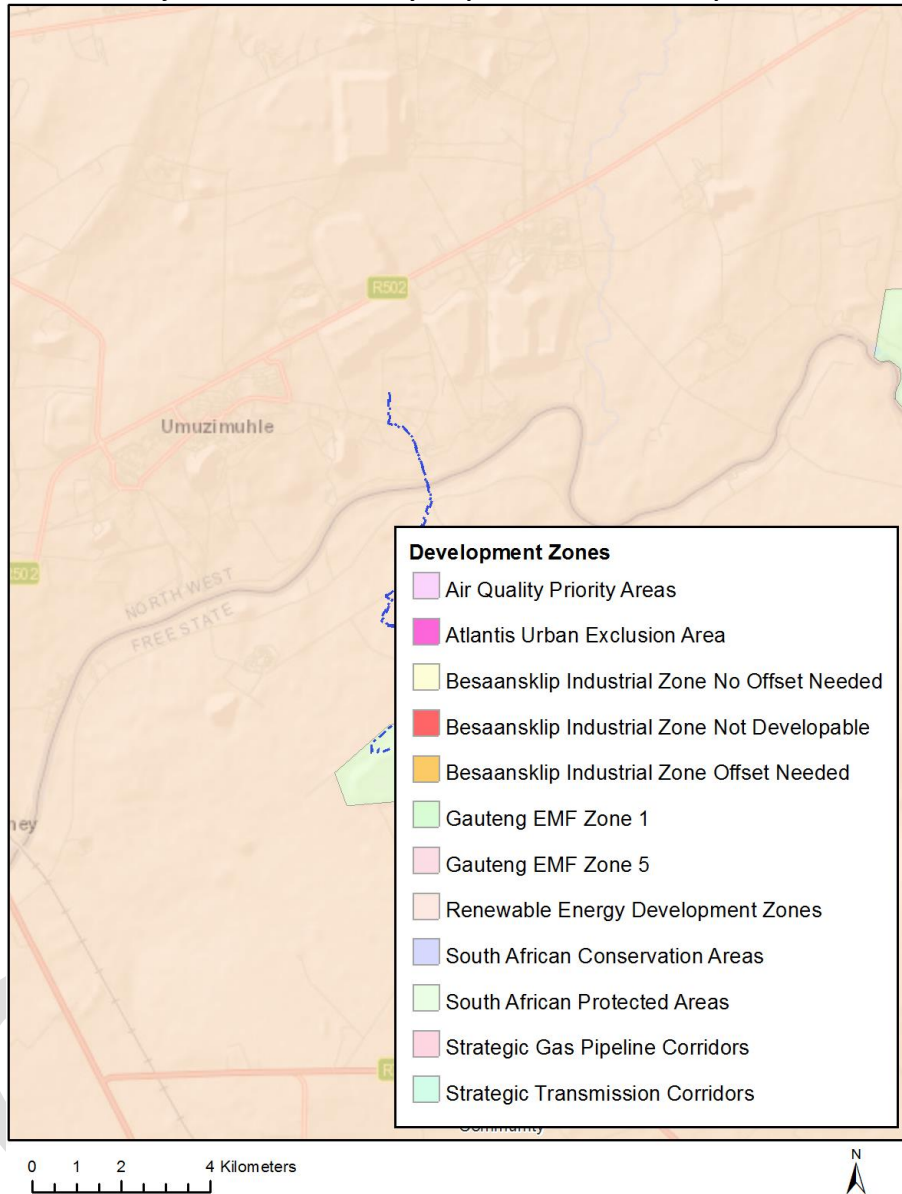
Relevant development incentives, restrictions, exclusions or prohibitions

The following development incentives, restrictions, exclusions or prohibitions and their implications that apply to this site are indicated below.

Incentive, restriction or prohibition	Implication
Strategic Transmission Corridor-Central corridor	https://screening.environment.gov.za/ScreeningDownloads/DevelopmentZones/Combined_EGI.pdf
Renewable energy development zones 10-Klerksdorp	https://screening.environment.gov.za/ScreeningDownloads/DevelopmentZones/Combined_REDZ.pdf
South African Protected Areas	https://screening.environment.gov.za/ScreeningDownloads/DevelopmentZones/SAPAD_OR_2022_Q2_Metadata.pdf

Map indicating proposed development footprint within applicable development incentive, restriction, exclusion or prohibition zones

Project Location: Harmony Mispah TSF Reclam and Pipelines



Proposed Development Area Environmental Sensitivity

The following summary of the development site environmental sensitivities is identified. Only the highest environmental sensitivity is indicated. The footprint environmental sensitivities for the proposed development footprint as identified, are indicative only and must be verified on site by a suitably qualified person before the specialist assessments identified below can be confirmed.

Theme	Very High sensitivity	High sensitivity	Medium sensitivity	Low sensitivity
Agriculture Theme		X		
Animal Species Theme		X		

Aquatic Biodiversity Theme	X			
Archaeological and Cultural Heritage Theme				X
Civil Aviation Theme		X		
Defence Theme				X
Paleontology Theme	X			
Plant Species Theme			X	
Terrestrial Biodiversity Theme	X			

Specialist assessments identified

Based on the selected classification, and the environmental sensitivities of the proposed development footprint, the following list of specialist assessments have been identified for inclusion in the assessment report. It is the responsibility of the EAP to confirm this list and to motivate in the assessment report, the reason for not including any of the identified specialist study including the provision of photographic evidence of the site situation.

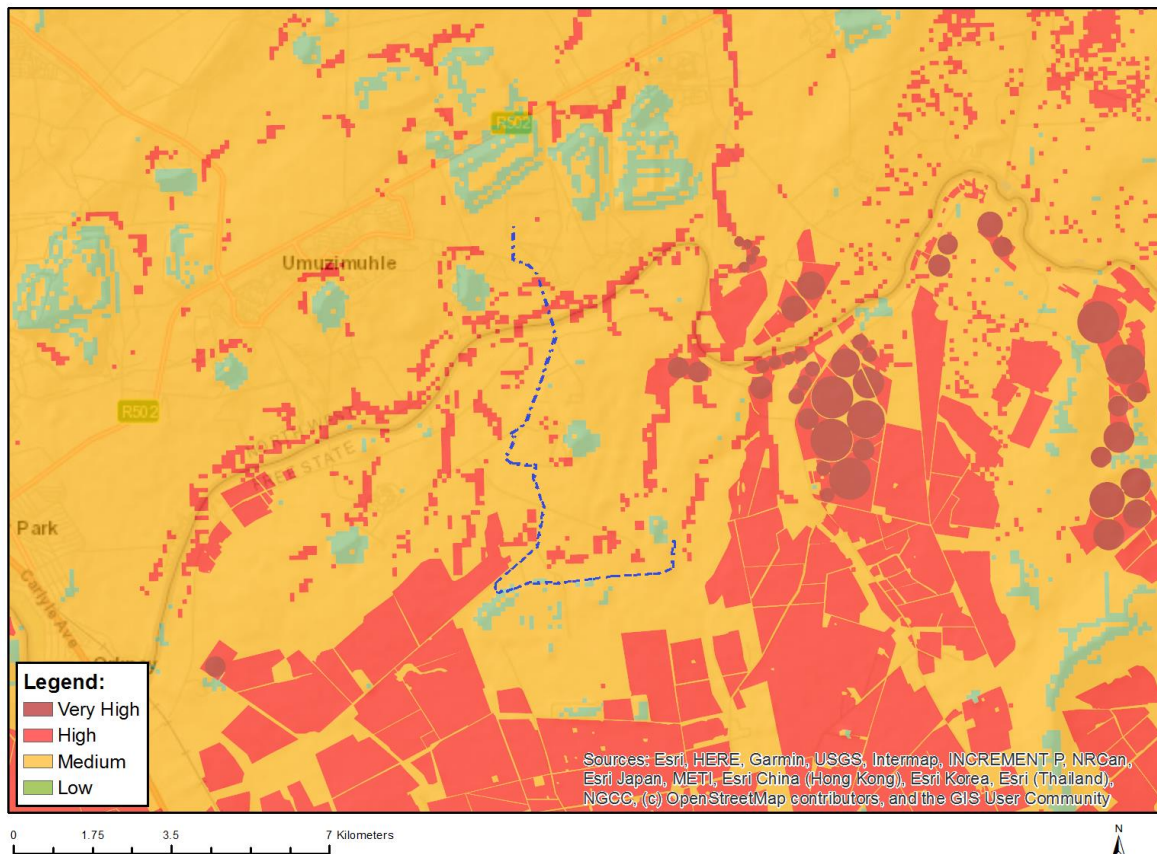
N o	Specialist assessment	Assessment Protocol
1	Agricultural Impact Assessment	https://screening.environment.gov.za/ScreeningDownloads/AssessmentProtocols/Gazetted_General_Agriculture_Assessment_Protocols.pdf
2	Archaeological and Cultural Heritage Impact Assessment	https://screening.environment.gov.za/ScreeningDownloads/AssessmentProtocols/Gazetted_General_Requirement_Assessment_Protocols.pdf
3	Palaeontology Impact Assessment	https://screening.environment.gov.za/ScreeningDownloads/AssessmentProtocols/Gazetted_General_Requirement_Assessment_Protocols.pdf
4	Terrestrial Biodiversity Impact Assessment	https://screening.environment.gov.za/ScreeningDownloads/AssessmentProtocols/Gazetted_Terrestrial_Biodiversity_Assessment_Protocols.pdf
5	Aquatic Biodiversity Impact Assessment	https://screening.environment.gov.za/ScreeningDownloads/AssessmentProtocols/Gazetted_Aquatic_Biodiversity_Assessment_Protocols.pdf
6	Hydrology Assess	https://screening.environment.gov.za/ScreeningDownloads/AssessmentProtocols/Gazetted_General_Requirement_Assessment_Protocols.pdf

	ment	
7	Geotechnical Assessment	https://screening.environment.gov.za/ScreeningDownloads/AssessmentProtocols/Gazetted_General_Requirement_Assessment_Protocols.pdf
8	Socio-Economic Assessment	https://screening.environment.gov.za/ScreeningDownloads/AssessmentProtocols/Gazetted_General_Requirement_Assessment_Protocols.pdf
9	Seismicity Assessment	https://screening.environment.gov.za/ScreeningDownloads/AssessmentProtocols/Gazetted_General_Requirement_Assessment_Protocols.pdf
10	Plant Species Assessment	https://screening.environment.gov.za/ScreeningDownloads/AssessmentProtocols/Gazetted_Plant_Species_Assessment_Protocols.pdf
11	Animal Species Assessment	https://screening.environment.gov.za/ScreeningDownloads/AssessmentProtocols/Gazetted_Animal_Species_Assessment_Protocols.pdf

Results of the environmental sensitivity of the proposed area.

The following section represents the results of the screening for environmental sensitivity of the proposed site for relevant environmental themes associated with the project classification. It is the duty of the EAP to ensure that the environmental themes provided by the screening tool are comprehensive and complete for the project. Refer to the disclaimer.

MAP OF RELATIVE AGRICULTURE THEME SENSITIVITY

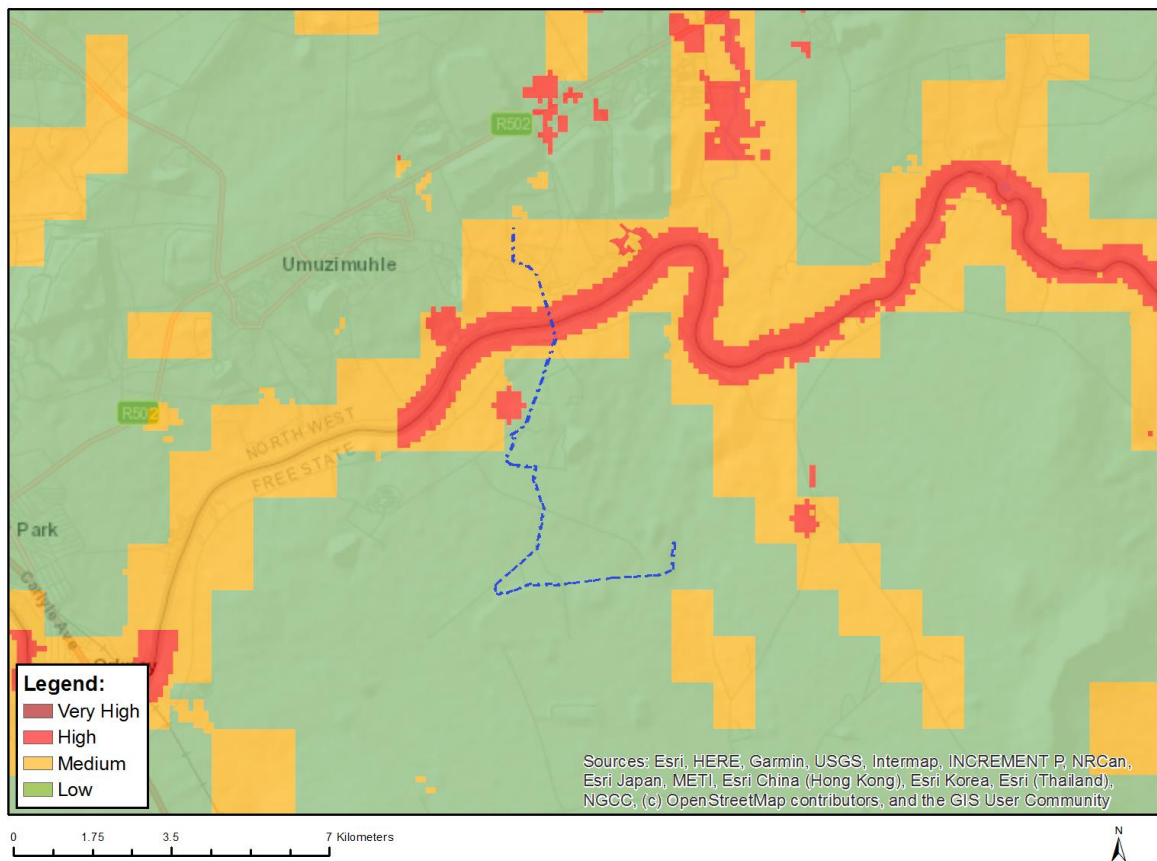


Very High sensitivity	High sensitivity	Medium sensitivity	Low sensitivity
	X		

Sensitivity Features:

Sensitivity	Feature(s)
High	Land capability;09. Moderate-High/10. Moderate-High
Low	Land capability;01. Very low/02. Very low/03. Low-Very low/04. Low-Very low/05. Low
Medium	Land capability;06. Low-Moderate/07. Low-Moderate/08. Moderate

MAP OF RELATIVE ANIMAL SPECIES THEME SENSITIVITY



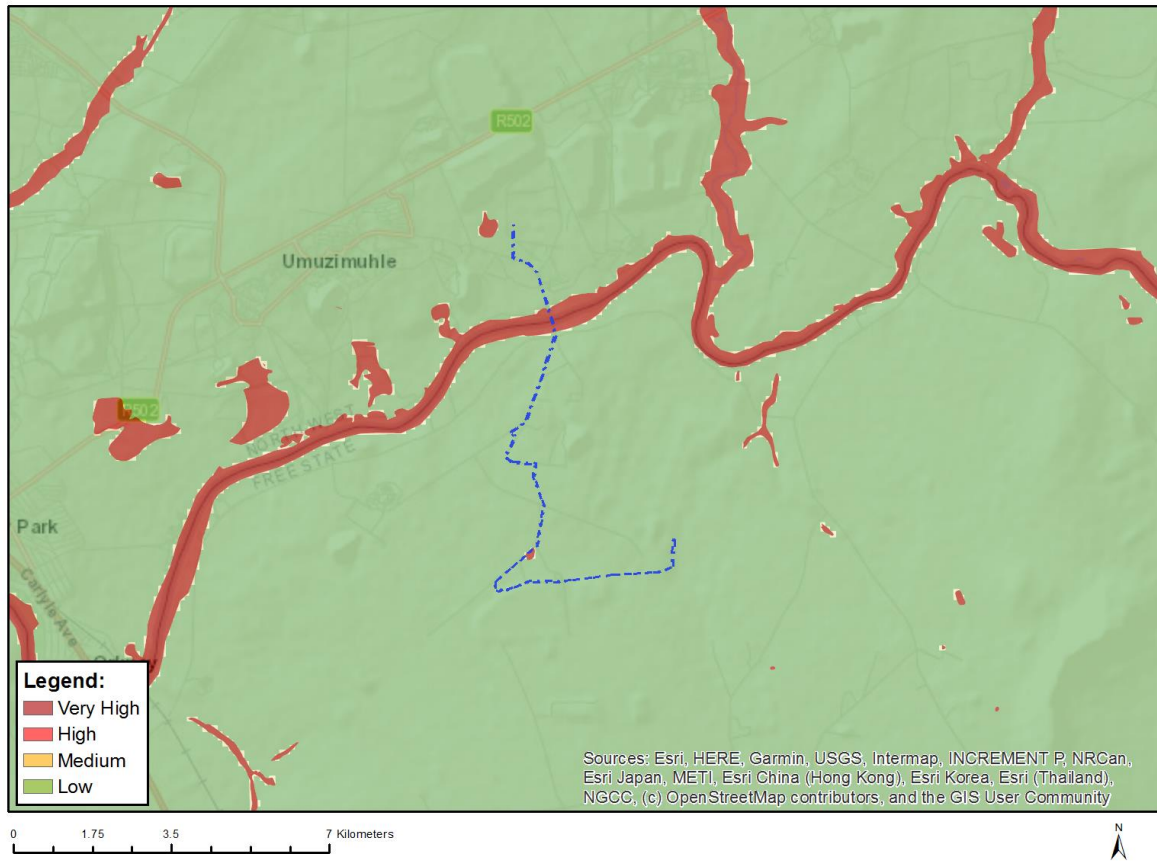
Where only a sensitive plant unique number or sensitive animal unique number is provided in the screening report and an assessment is required, the environmental assessment practitioner (EAP) or specialist is required to email SANBI at eiadatarequests@sanbi.org.za listing all sensitive species with their unique identifiers for which information is required. The name has been withheld as the species may be prone to illegal harvesting and must be protected. SANBI will release the actual species name after the details of the EAP or specialist have been documented.

Very High sensitivity	High sensitivity	Medium sensitivity	Low sensitivity
	X		

Sensitivity Features:

Sensitivity	Feature(s)
High	Aves-Hydroprogne caspia
High	Aves-Mycteria ibis
Low	Subject to confirmation
Medium	Aves-Circus ranivorus
Medium	Mammalia-Hydrictis maculicollis

MAP OF RELATIVE AQUATIC BIODIVERSITY THEME SENSITIVITY

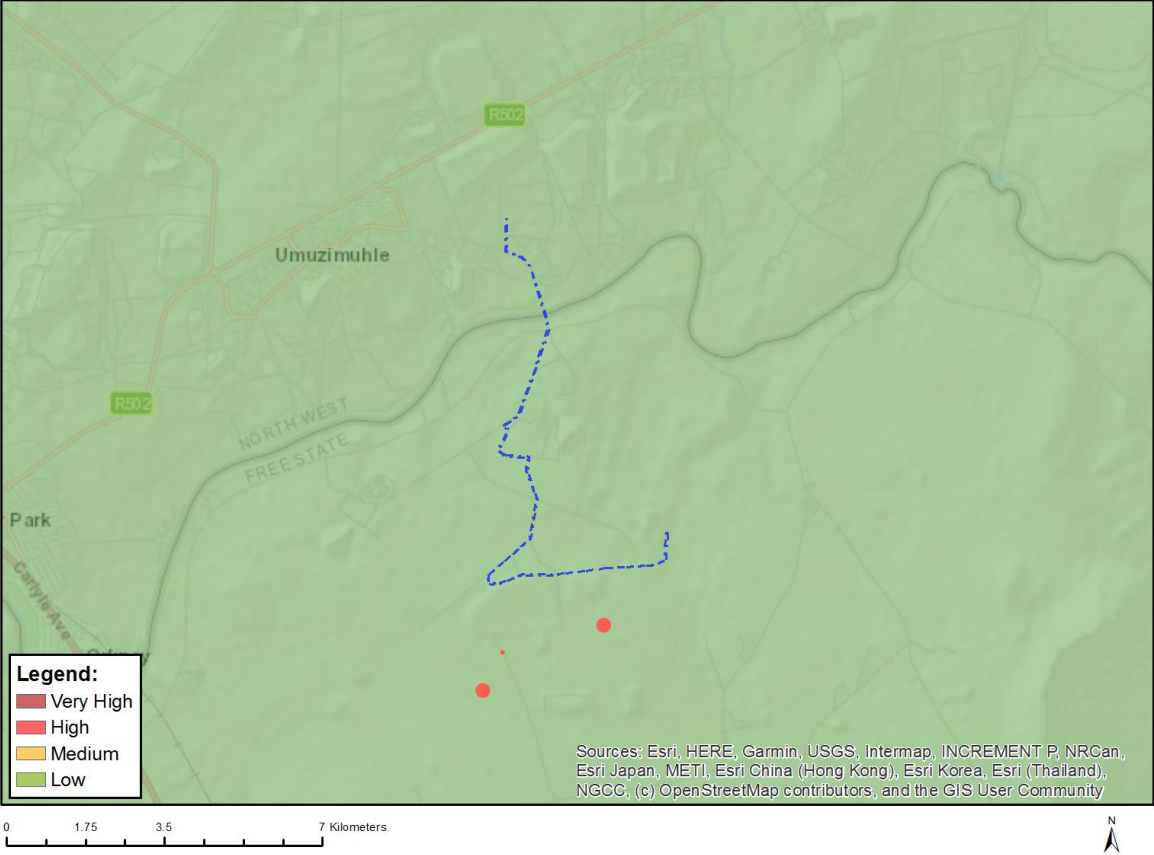


Very High sensitivity	High sensitivity	Medium sensitivity	Low sensitivity
X			

Sensitivity Features:

Sensitivity	Feature(s)
Low	Low sensitivity
Very High	Aquatic CBAs
Very High	Wetlands and Estuaries

MAP OF RELATIVE ARCHAEOLOGICAL AND CULTURAL HERITAGE THEME SENSITIVITY

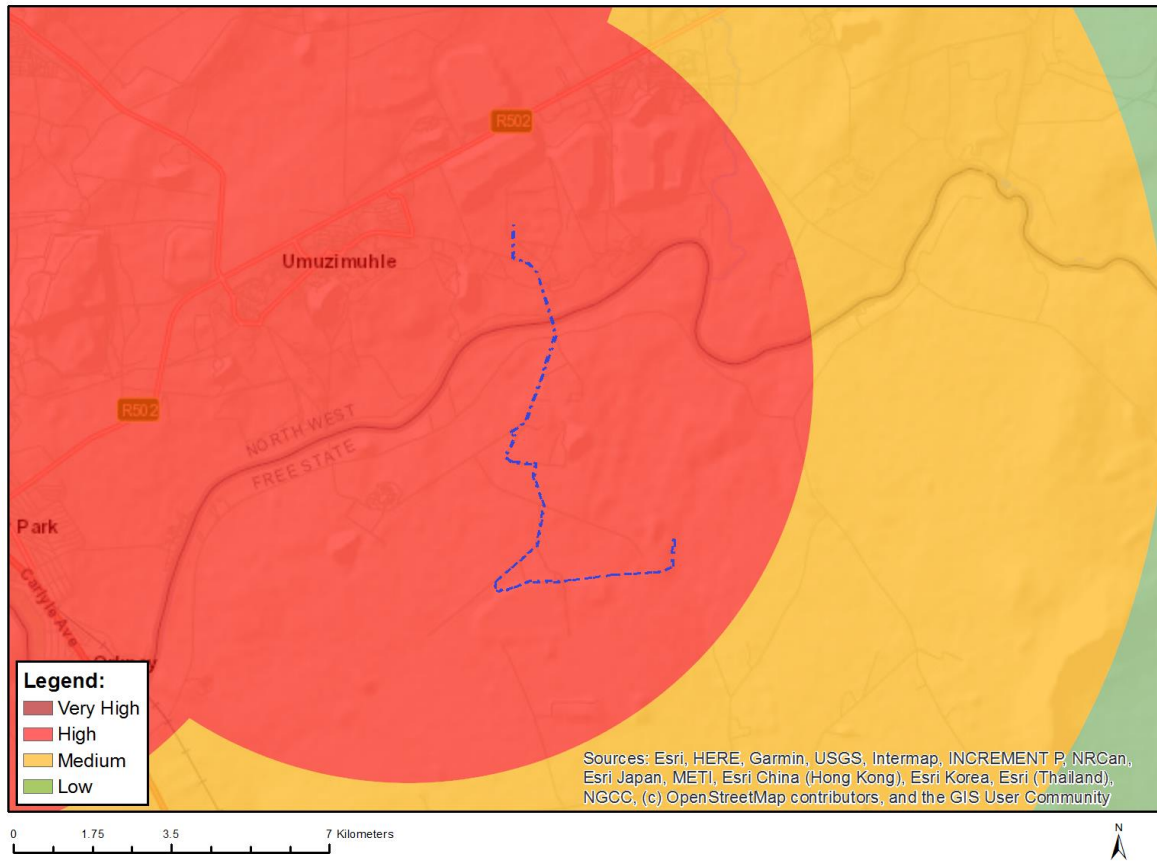


Very High sensitivity	High sensitivity	Medium sensitivity	Low sensitivity
			X

Sensitivity Features:

Sensitivity	Feature(s)
Low	Low sensitivity

MAP OF RELATIVE CIVIL AVIATION THEME SENSITIVITY

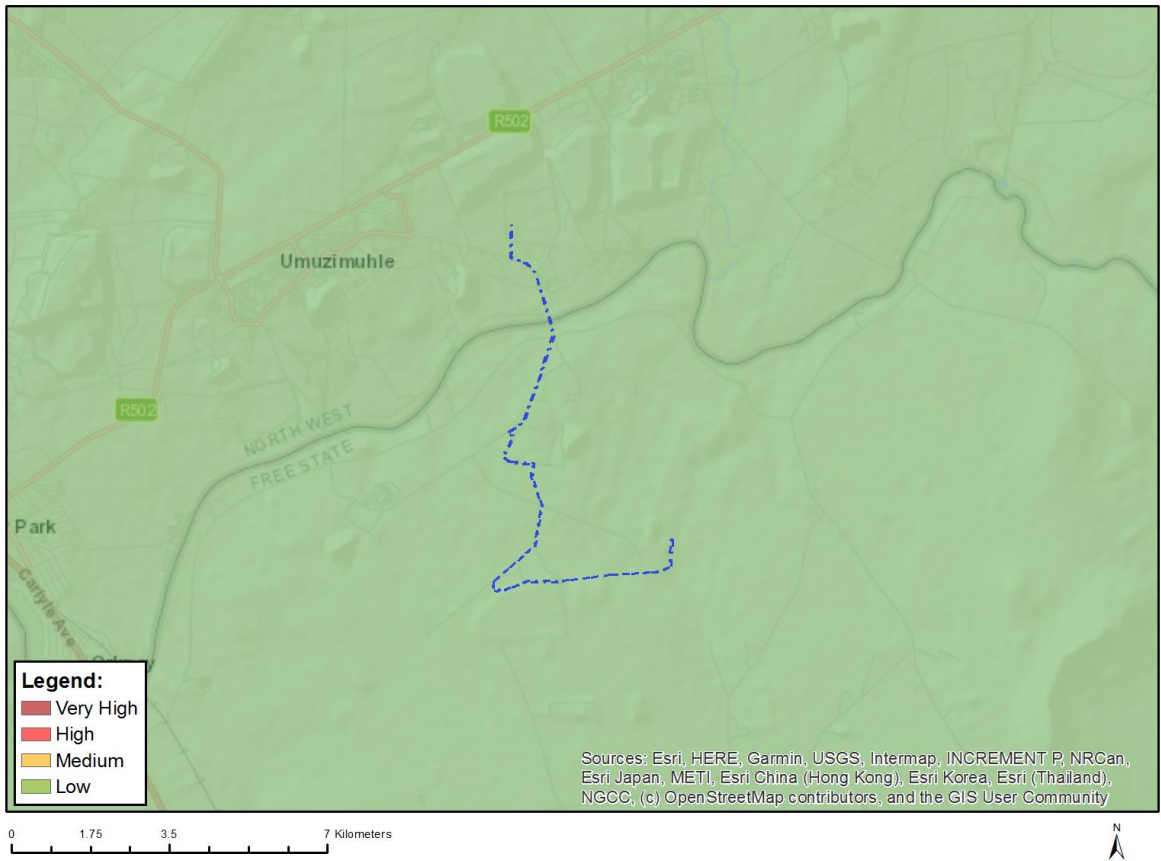


Very High sensitivity	High sensitivity	Medium sensitivity	Low sensitivity
	X		

Sensitivity Features:

Sensitivity	Feature(s)
High	Within 8 km of other civil aviation aerodrome

MAP OF RELATIVE DEFENCE THEME SENSITIVITY

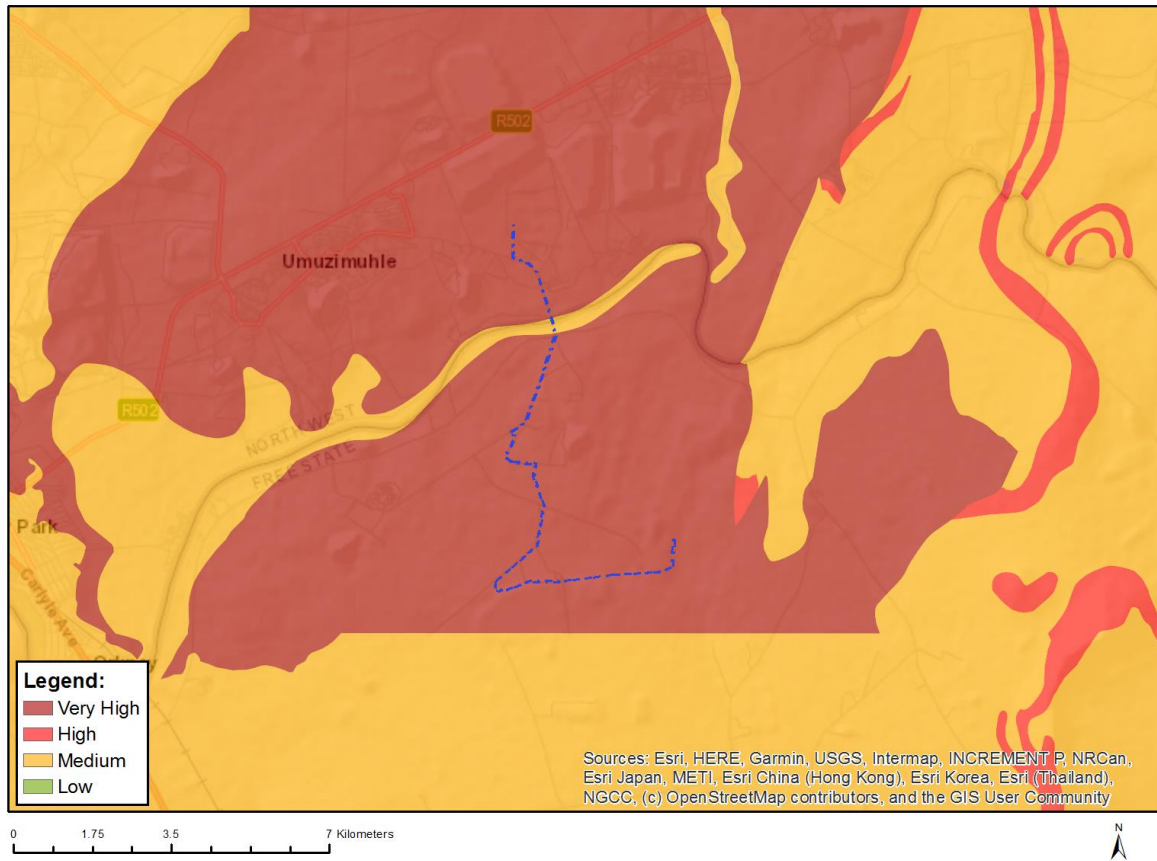


Very High sensitivity	High sensitivity	Medium sensitivity	Low sensitivity
			X

Sensitivity Features:

Sensitivity	Feature(s)
Low	Low Sensitivity

MAP OF RELATIVE PALEONTOLOGY THEME SENSITIVITY

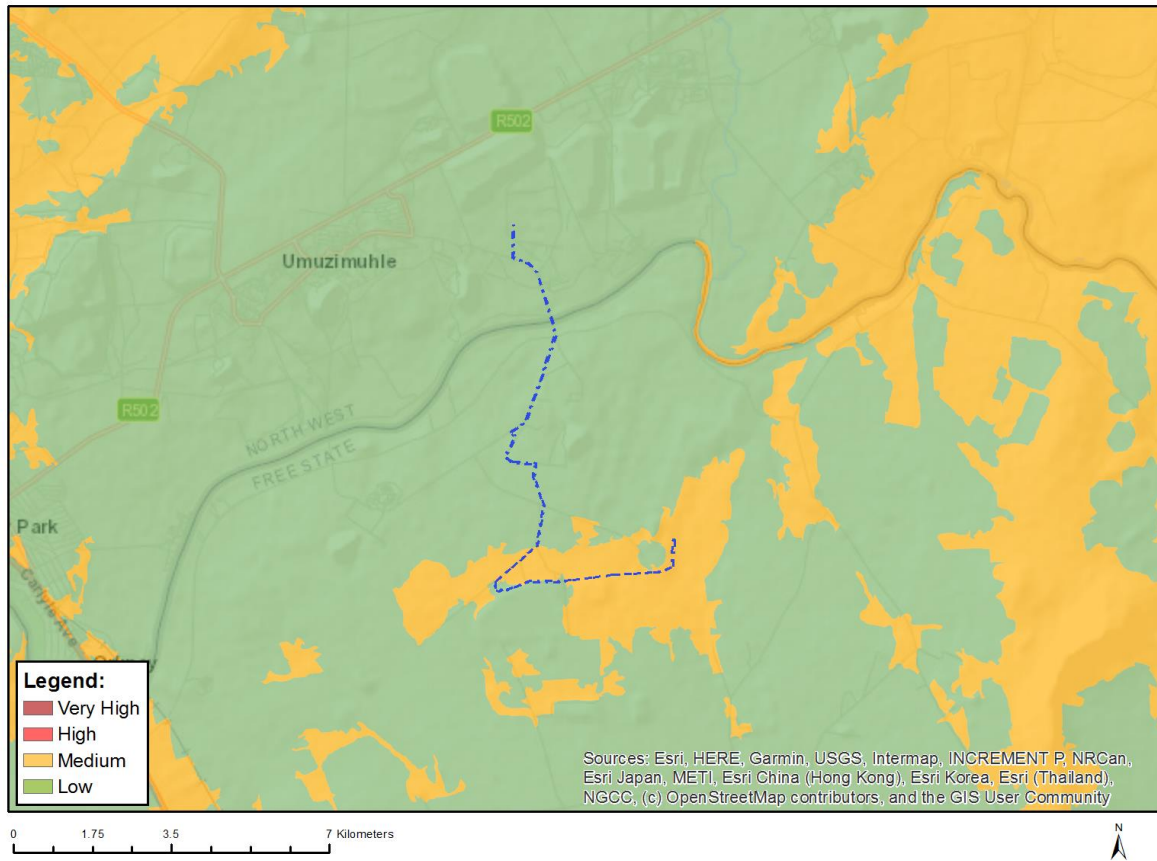


Very High sensitivity	High sensitivity	Medium sensitivity	Low sensitivity
X			

Sensitivity Features:

Sensitivity	Feature(s)
Medium	Features with a Medium paleontological sensitivity
Very High	Features with a Very High paleontological sensitivity

MAP OF RELATIVE PLANT SPECIES THEME SENSITIVITY



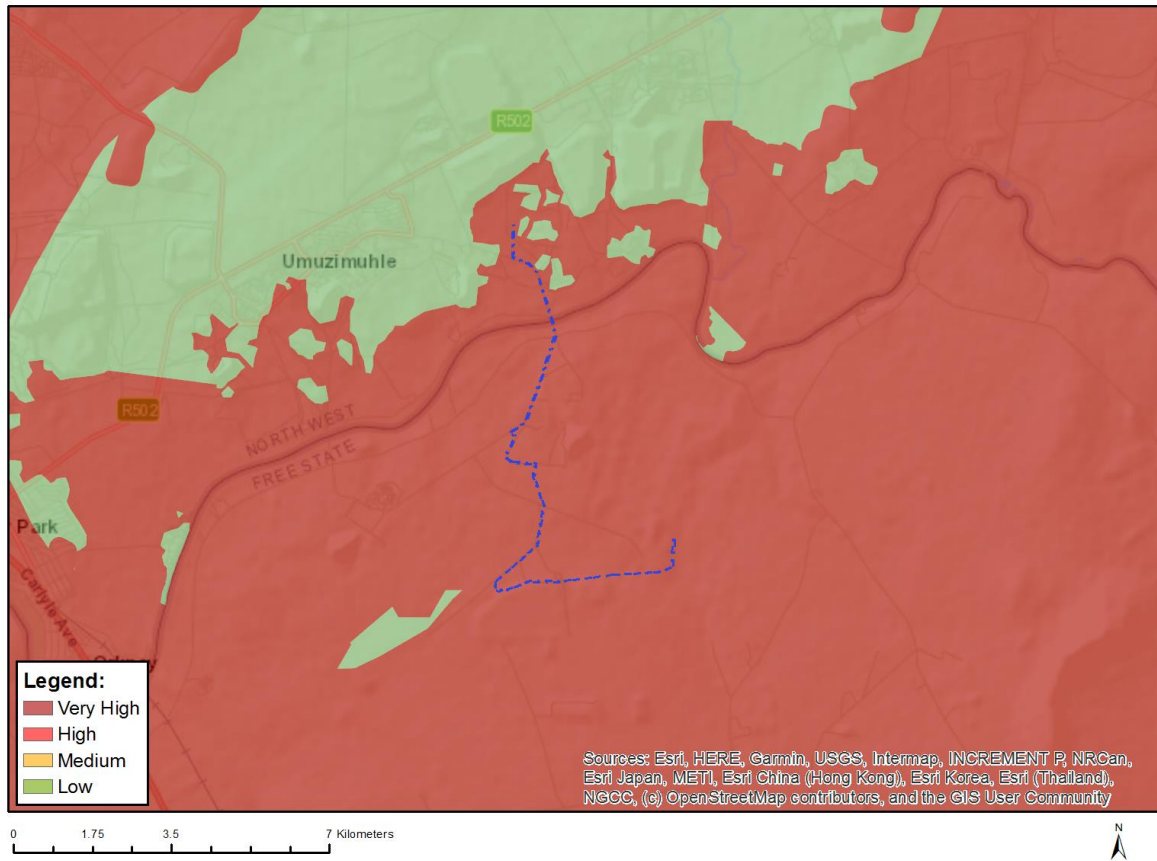
Where only a sensitive plant unique number or sensitive animal unique number is provided in the screening report and an assessment is required, the environmental assessment practitioner (EAP) or specialist is required to email SANBI at eiadatarequests@sanbi.org.za listing all sensitive species with their unique identifiers for which information is required. The name has been withheld as the species may be prone to illegal harvesting and must be protected. SANBI will release the actual species name after the details of the EAP or specialist have been documented.

Very High sensitivity	High sensitivity	Medium sensitivity	Low sensitivity
		X	

Sensitivity Features:

Sensitivity	Feature(s)
Low	Low Sensitivity
Medium	Sensitive species 1261

MAP OF RELATIVE TERRESTRIAL BIODIVERSITY THEME SENSITIVITY



Very High sensitivity	High sensitivity	Medium sensitivity	Low sensitivity
X			

Sensitivity Features:

Sensitivity	Feature(s)
Very High	Critical biodiversity area 1
Very High	Ecological support area 1
Very High	Ecological support area 2
Very High	Endangered ecosystem
Very High	Mispah Game Farm