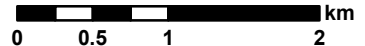


Ikhephu Feedlot

Vegetation Map



1:50 000



Coordinate System : Geographic WGS84



GIBB Contact Details: (043) 706 3600

Legend

Ikhephu Feedlot

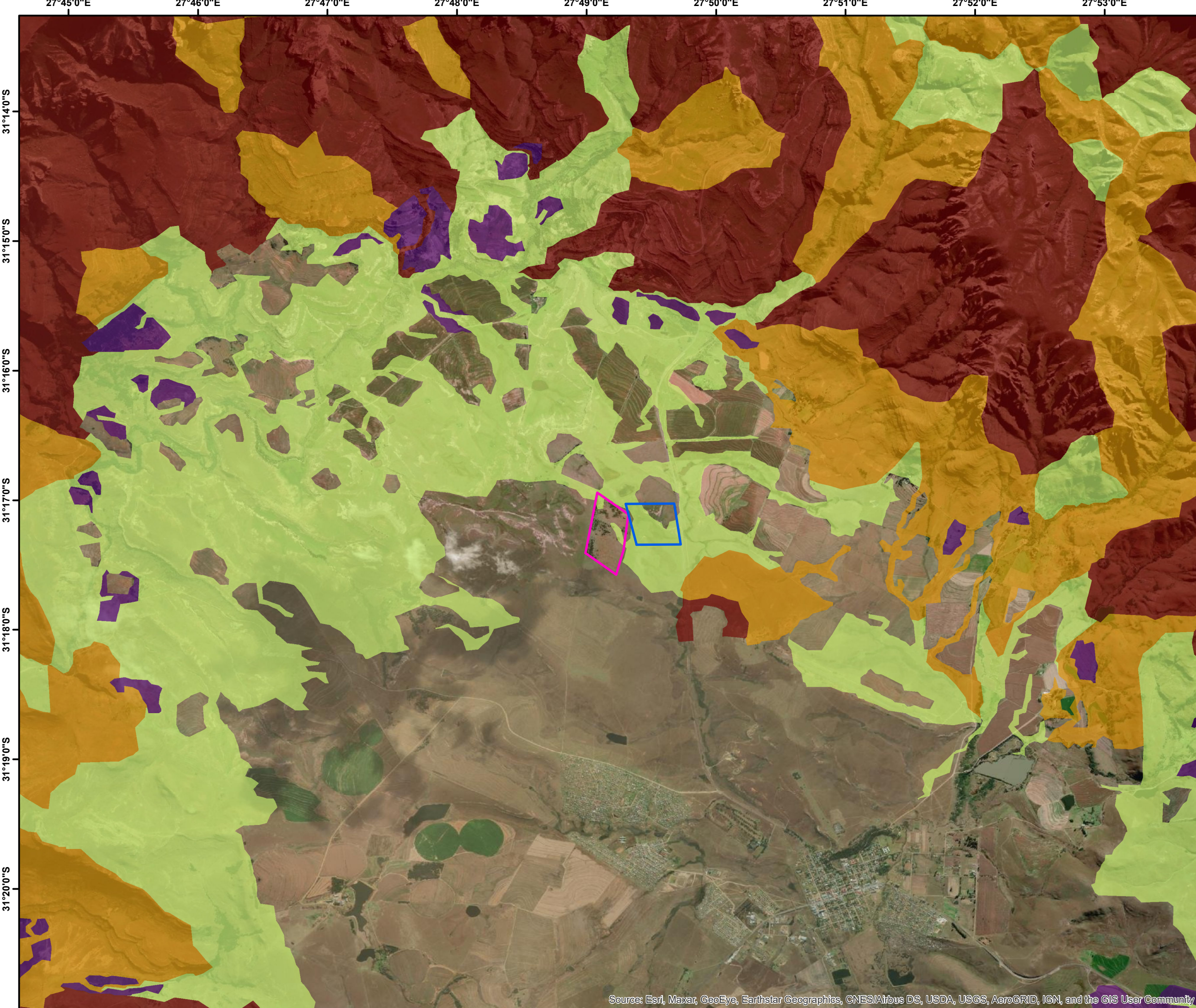
- Current
- Alternative

Vegetation

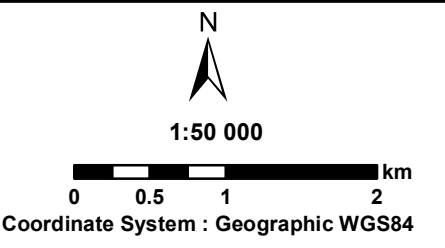
- Drakensberg Foothill Moist Grassland
- Eastern Temperate Freshwater Wetlands
- Lesotho Highland Basalt Grassland
- Southern Drakensberg Highland Grassland
- Tsomo Grassland

Eco-status

- Vulnerable



Ikhephu Feedlot
Biodiversity Sensitivity Map

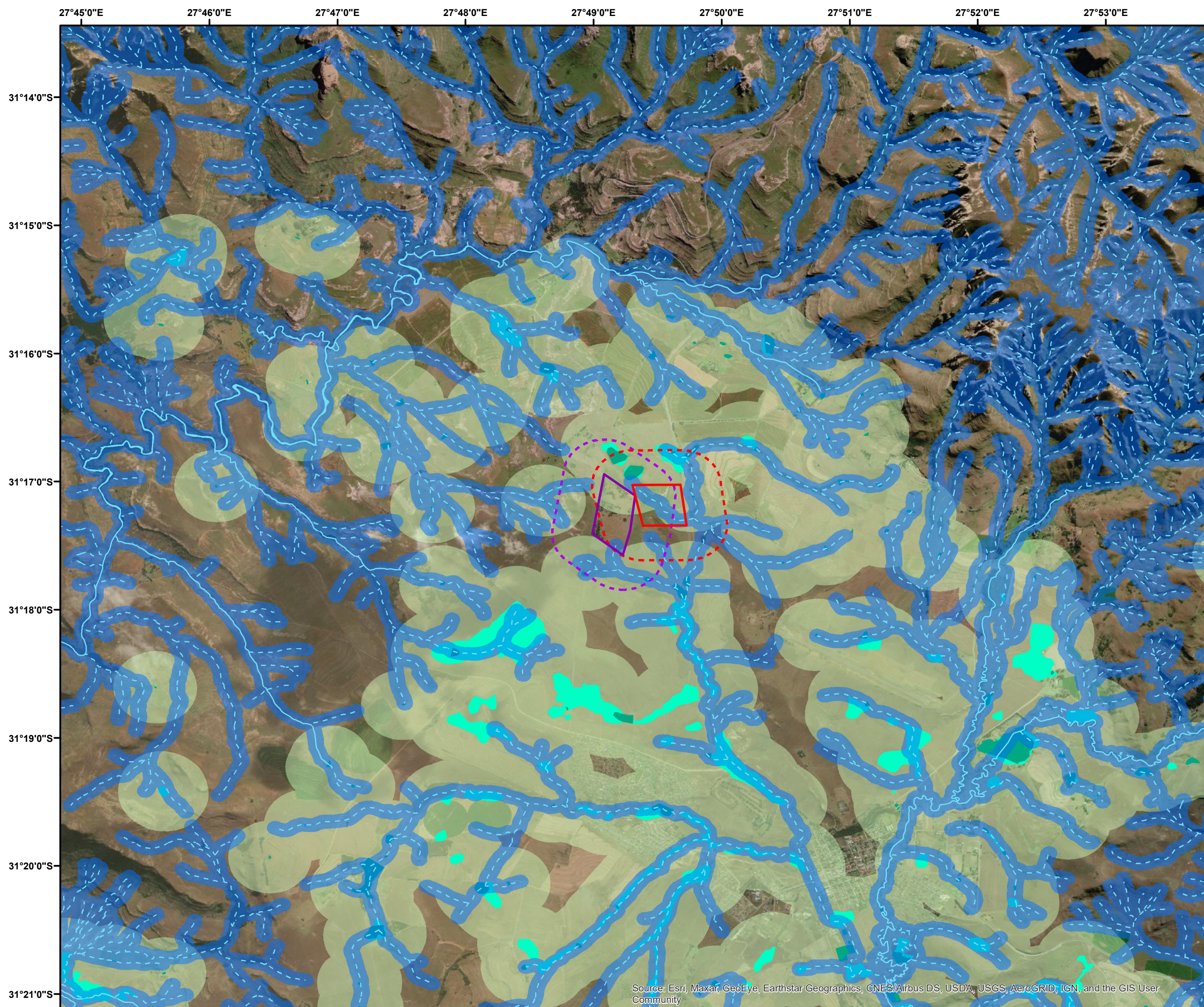



GIBB Contact Details: (043) 706 3600



- Legend**
- Proposed Development Site**
- Ikhephu Feedlot - Current Site
 - Ikhephu Feedlot - Alternative Site
- Terrestrial Biodiversity**
- CBA 1
 - CBA 2
 - ESA 1
 - ESA 2

Source: Esri, Maxar, GeoEye, Earthstar Geographics, CNES/Airbus DS, USDA, USGS, AeroGRID, IGN, and the GIS User Community



Ikhephu Feedlot

Hydrology Sensitivity Map

N

1:50 000

0 0.5 1 2 m

Coordinate System : Geographic WGS84



GIBB
ENVIRONMENTAL

GIBB Contact Details: (043) 706 3600



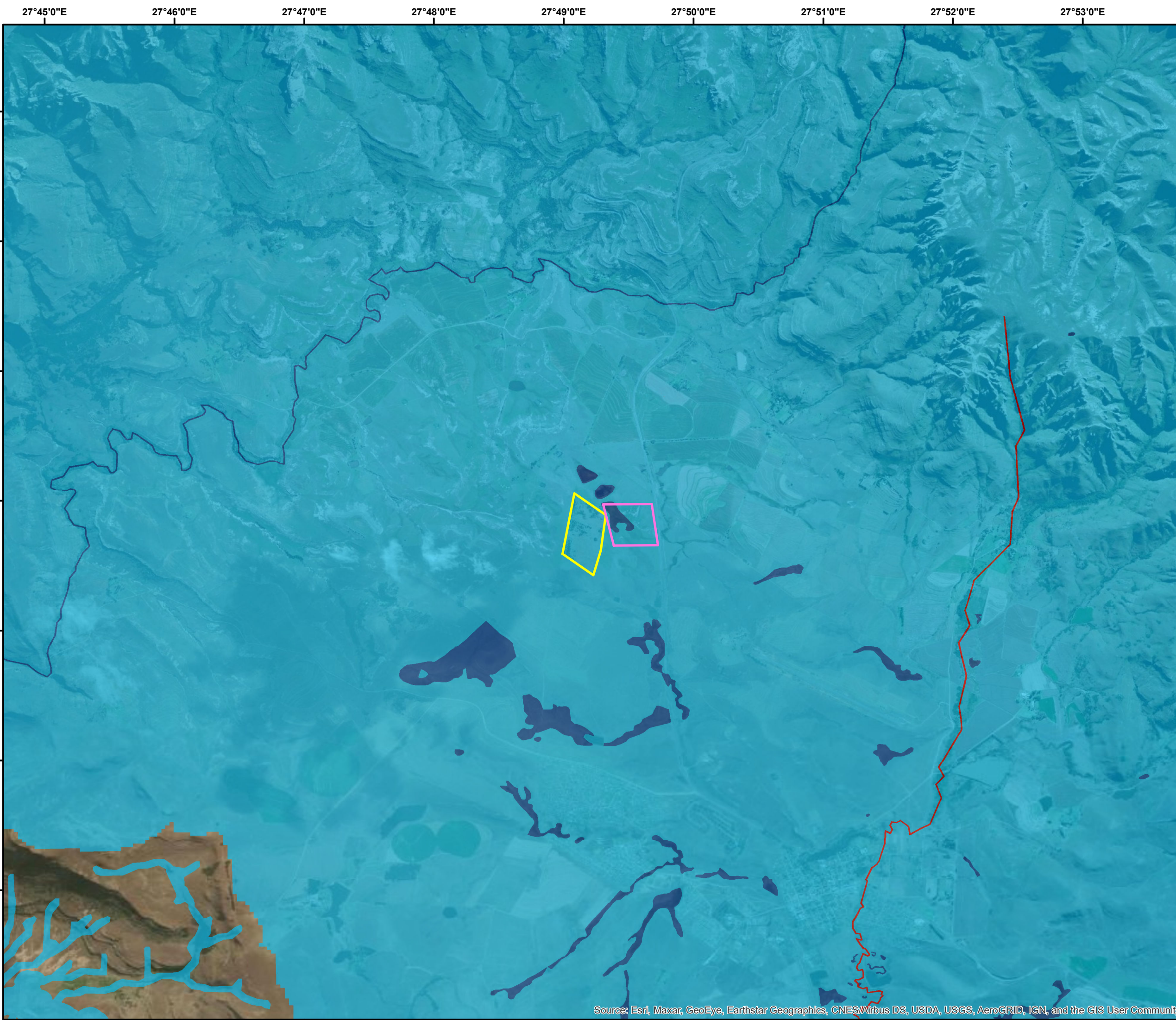
Legend

- NFEPA Wetland - Natural
- NFEPA Wetland - Artificial
- NFEPA Wetland 500m Buffer
- Perennial River
- Non-Perennial River
- Drainage Line 100m Buffer
- Ikhephu Feedlot - Current Site
- Ikhephu Feedlot - Alternative Site

500m Buffer

- Ikhephu Feedlot - Current
- Ikhephu Feedlot - alternative site

Source: Esri, Maxar, GeoEye, Earthstar Geographics, CNES/Airbus DS, USDA, USGS, AeroGRID, IGN, and the GIS User Community



Ikhephu Feedlot

Biodiversity Sensitivity Map

N
↑

1:50 000

0 0.5 1 2 km

Coordinate System : Geographic WGS84



GIBB
ENVIRONMENTAL

GIBB Contact Details: (043) 706 3600



Legend

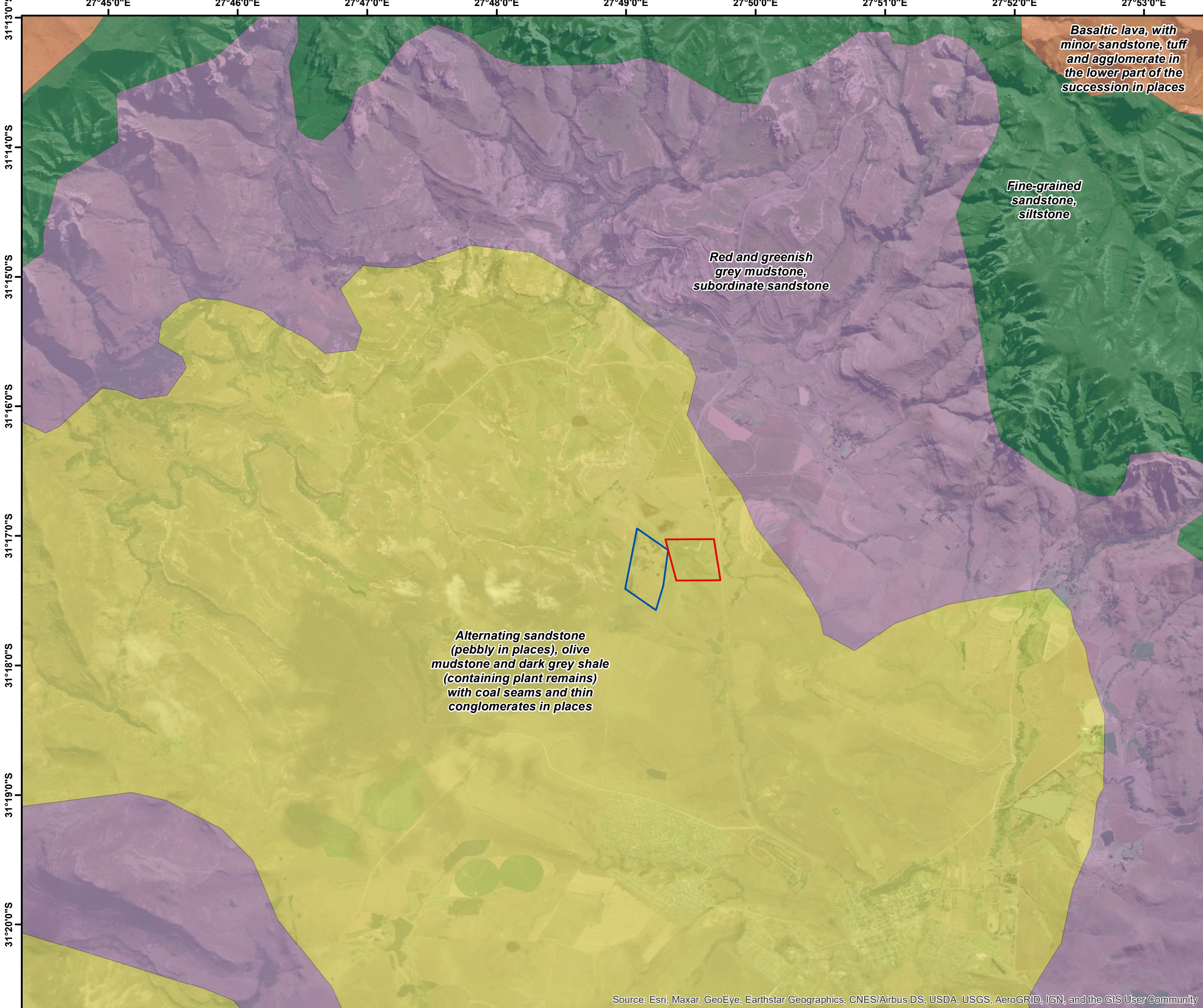
Proposed Development Site

- Ikhephu Feedlot - Current Site
- Ikhephu Feedlot - Alternative Site

Aquatic Biodiversity

- CBA 1
- CBA 2
- ESA 1

Source: Esri, Maxar, GeoEye, Earthstar Geographics, CNES/Airbus DS, USDA, USGS, AeroGRID, IGN, and the GIS User Community



Ikhephu Feedlot

Geological Sensitivity Map

N

1:50 000

0 0.5 1 2 km

Coordinate System : Geographic WGS84

GIBB
ENVIRONMENTAL

GIBB Contact Details: (043) 706 3600

Legend

Proposed Development Site

- Current
- Alternative

Geology

- Clarens
- DRAKENSBERG
- Elliot
- Molteno

Source: Esri, Maxar, GeoEye, Earthstar Geographics, CNES/Airbus DS, USDA, USGS, AeroGRID, IGN, and the GIS User Community