

## 5. What is a Part 2 Amendment process?

- This project was granted an EA in terms of NEMA and the Environmental Impact Assessment (EIA) Regulations Government Notices (GN) R982, R983 and R985 of 2014.
- Due to project changes, there is a change in the scope of the EA.
- This is because there is an increased level or change in the nature of the impacts assessed for the EA that was already granted.
- However, the change(s) do not on their own constitute a listed activity.
- These changes could not have been assessed, included or taken into consideration in the initial application for EA, as they were unknown at the time.
- Therefore, an amendment to the existing EA is being applied for under Chapter 5, *Part 2: Amendments where a change in scope occurs*, of the EIA Regulations (Government Notice 982 of 2014).

## 6. What has been done to date?

An EA was granted to Mogalakwena Mine Solar Power (Pty) Ltd on 9 December 2021, with reference number 12/1/9/2/-W89.



An Basic Assessment and associated Public Participation Process was undertaken in September 2022, due to additional Listed Activities being identified as a result of project changes.



Due to additional project changes, the Basic Assessment process was changed to a **Part 2 Amendment Application**, due to the change in scope and impact. The change no longer constitutes a new listed activity.

## 7. Why are we sending you this notice?

- Zutari was appointed by PGE-EDFR as the independent Environmental Assessment Practitioner (EAP) to manage the Part 2 Amendment application to the existing EA of this project.
- This includes the Public Participation Process (PPP), in accordance with Chapters 5 and 6 of the EIA Regulations (Government Notice 982 of 2014).
- This provides information to interested and affected parties about the Part 2 Amendment process.
- The public can help us to identify the possible positive and negative impacts the project might have on people and the environment.
- This information is made available for everyone to read.
- The Draft Part 2 Amendment Report will be made available for at least 30 calendar days.
- All issues and comments received will be captured in a Comments and Response Report (CRR) in the final Part 2 Amendment Report.
- The Competent Authority (LEDET) must approve or deny the Amendment to the EA after they have assessed the environmental reports, which include comments received from parties like yourself.

**PUBLIC COMMENT PERIOD: THURSDAY, 17 NOVEMBER 2022 TO MONDAY, 9 JANUARY 2023.**

The Draft Part 2 Amendment Report is available for download at <https://www.zutari.com/mogalakwena-pv/>

## Background Information Document for the Mogalakwena PV Solar Energy Facility



### 1. What is planned?

Mogalakwena Mine Solar Power (Pty) Ltd appointed Pele Green Energy (PGE) with EDF Renewables (EDFR) as the Independent Power Producer to develop a photovoltaic (PV) solar energy facility for electricity to the mine. An Environmental Authorisation (EA) was granted on 9 December 2021 (ref. no. 12/1/9/2/-W89) to construct the facility.

**Due to project changes, the scope of the EA will now have to be amended.**

Zutari (Pty) Ltd was appointed as the independent Environmental Assessment Practitioner to undertake an Amendment for the proposed change in EA scope. It includes an expansion of the plant over an area of approximately 22 ha, including the following:

- Numerous rows of PV modules mounted on steel tracking mounts and footings (concrete or driven into the ground) with associated support infrastructure, allowing the plant to generate up to 120 MW as authorised by the existing EA;
- Internal access roads for servicing and maintenance of the site;
- Stormwater management infrastructure; and
- Temporary equipment laydown areas/construction camps.

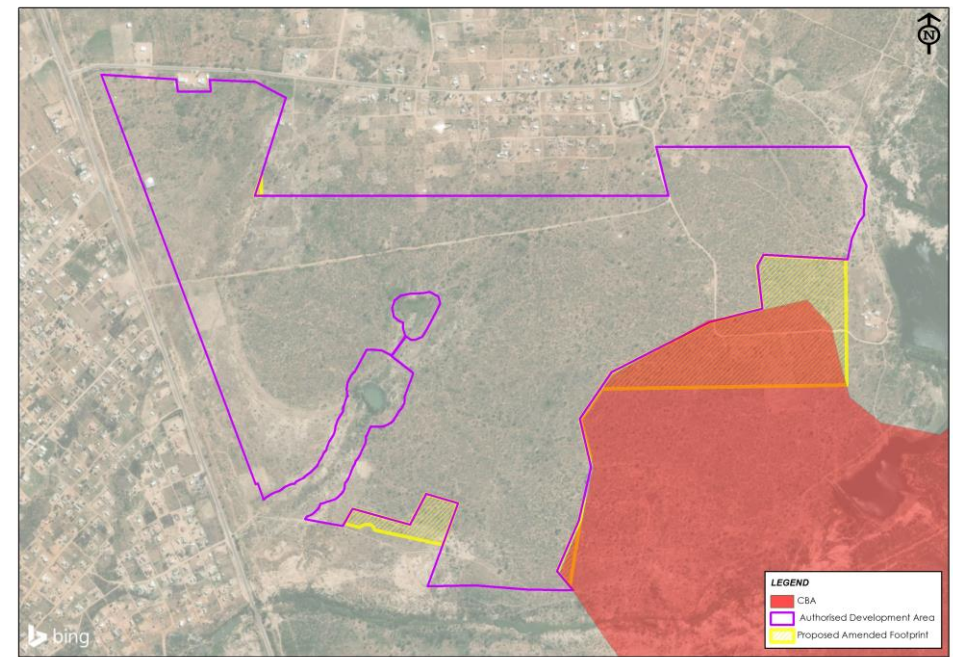
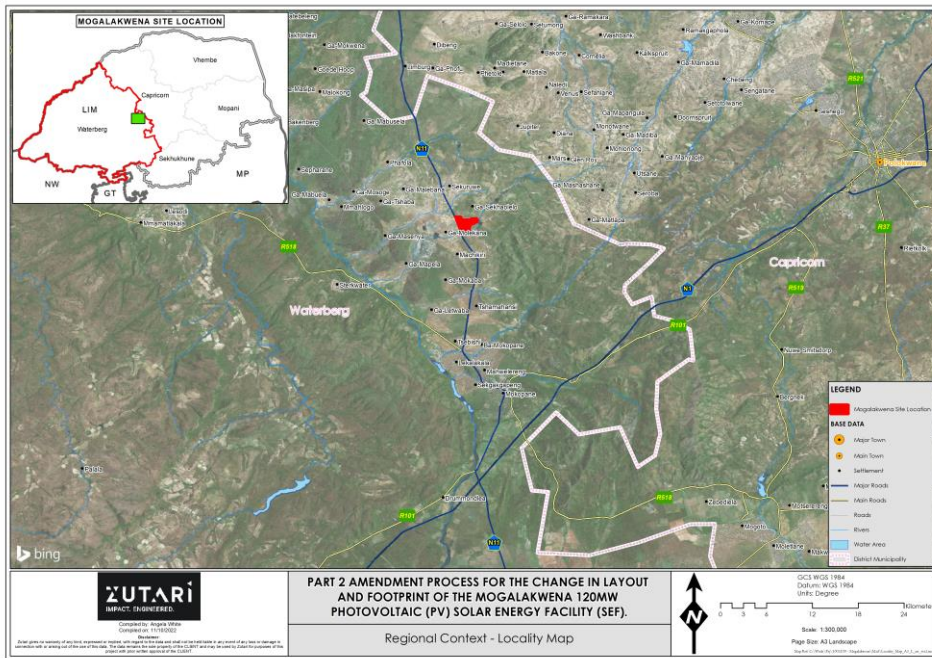
### 2. How to get involved

**If you would like to register as an Interested and Affected Party (I&AP) to receive information, if you want to comment on the project, or if you have any questions, please contact us via email, post, or phone.**

✉	PPP@Zutari.com
☎	012 427 2072
✉	PO Box 74381, Lynnwood Ridge, 0040, South Africa

### 3. Where is it planned?

The PV solar energy facility and associated infrastructure are proposed to be developed on the land parcel situated on the Remainder of Portion 3 of the Farm Armoede 823. The proposed site is located east of the N11 main road, 27 km northwest of the town of Mokopane in the Limpopo Province.



### 4. Why is a Part 2 Amendment application being done?

PGE-EDFR's proposed design for the project requires additional space because:

- ▶ Additional dwellings have been built in the proposed development area after the initial EIA process was undertaken;
- ▶ The initially proposed footprint was split into three sections (north, central and south) on the Armoede property. PGE-EDFR proposes to develop all project infrastructure only in the central section; and
- ▶ The remaining available footprint is not sufficient to achieve the required energy generation.

The proposed expansion area of the plant is shown in yellow in **Figure 2** above. A part of the expansion is proposed within a "Critical Biodiversity Area", which is shown in red.

Therefore, an amendment to the EA is required from the competent authority, the Limpopo Department of Economic Development, Environment and Tourism (LEDET), before the proposed project can proceed.

Other components of the project that have already been authorised remain unchanged. This includes rows of solar PV modules for electricity generation of up to 120MW, connection and control buildings, a guard cabin; weather stations; perimeter fencing; and a substation and/or switchyard to convert power for transmission to Mogalakwena Mine.