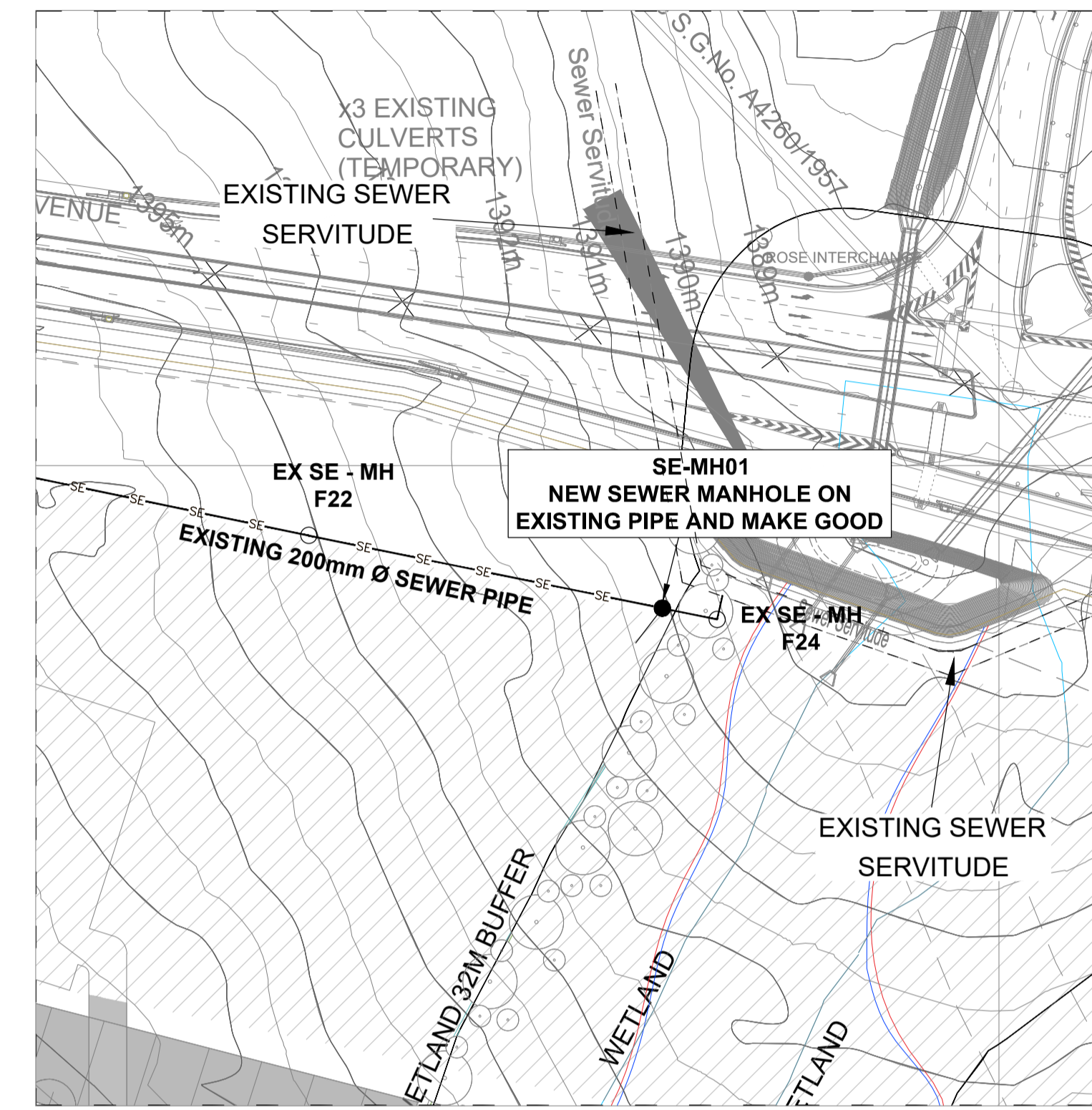
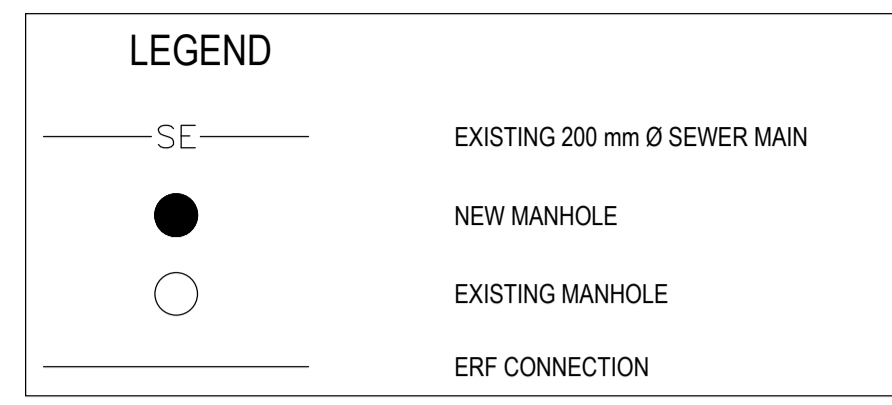
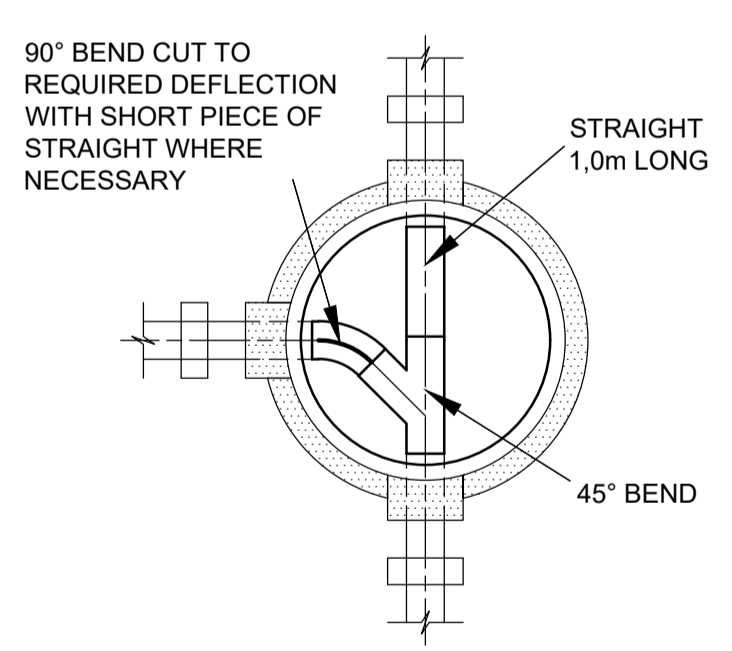


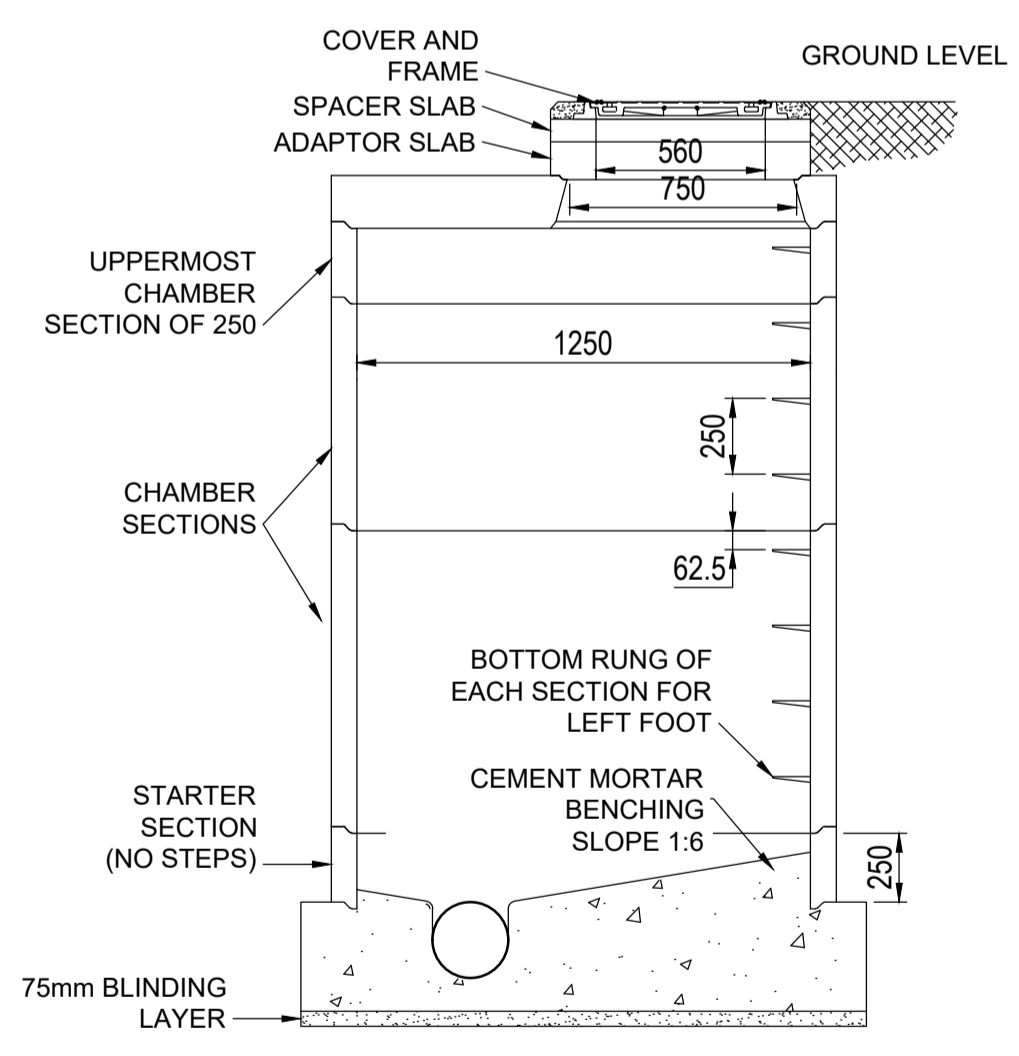
**EXISTING SEWER RETICULATION LAYOUT PLAN**  
SCALE 1 : 1750



**AREA 1 - NEW SEWER CONNECTION**  
SCALE 1 : 1000



TYPICAL MANHOLE DETAIL:  
90° JUNCTION (SE-MH01)



TYPICAL SEWER MANHOLE DETAIL

**JOHANNESBURG WATER (PTY) LTD NOTES**

- GENERAL**
- THE NEW CUSTOMER MANAGER AT THE JOHANNESBURG WATER (PTY) LTD REGIONAL OFFICE MUST BE NOTIFIED BEFORE ANY CONSTRUCTION WORKS RELATED TO THE INSTALLATION OF WATER OR SEWER MAY BE COMMENCED.
  - ALL CONSTRUCTION WORK SHALL COMPLY WITH THE RELEVANT SABS 1200 SPECIFICATION AND JOHANNESBURG WATER (PTY) LTD SPECIFIC REQUIREMENTS.
  - ALL MATERIALS USED IN INSTALLING WATER AND SEWER MAINS SHALL COMPLY WITH THE RELEVANT SABS SPECIFICATION AND WITH THE MINIMUM REQUIREMENTS OF JOHANNESBURG WATER (PTY) LTD.
  - THE POSITION AND DEPTH OF ALL EXISTING SERVICES ON THE SITE AND OFF THE SITE WHERE AFFECTED BY THE WORKS SHALL BE CONFIRMED PRIOR TO ANY CONSTRUCTION WORK ON THE INSTALLATION OF WATER OF SEWER MAINS BEING COMMENCED.
  - ONLY JOHANNESBURG WATER (PTY) LTD. STAFF SHALL CARRY OUT TIE-IN CONNECTIONS TO EXISTING WATER AND SEWER MANHOLES AND MAINS.
  - NOTE THAT A MINIMUM OF 2 WEEKS NOTICE SHALL BE GIVEN TO JOHANNESBURG WATER (PTY) LTD. STAFF TO ATTEND SITE INSPECTION, MEETING AND ANY OTHER NECESSARY ON SITE.

- SPECIFIC SEWER REQUIREMENTS**
- FOR STANDARD DETAILS REFER TO JOHANNESBURG WATER STANDARD DRAWINGS.
  - ALL MATERIALS SHALL COMPLY WITH THE RELEVANT SABS SPECIFICATION AND WITH THE REQUIREMENTS OF JOHANNESBURG WATER (PTY) LTD.
  - ANCHORING OF SEWER MAINS, GRADE - BETWEEN 1:12 AND STEEPER : ANCHOR BLOCKS SHALL BE INSTALLED AT INTERVALS NOT EXCEEDING 12 METERS
  - NO TREES OR SHRUBS SHALL BE PLANTED WITHIN 2 METERS OF ANY SEWER MAIN.
  - SEWER MANHOLES ARE TO BE SPACED A MAXIMUM DISTANCE OF 80 METERS.

- PROJECT NOTES**
- TESTING OF PIPES AND APPURTENANCES**
- IT IS THE CONTRACTOR'S RESPONSIBILITY TO ENSURE THAT WORKS ARE PROPERLY CARRIED OUT IN ACCORDANCE TO RELEVANT SANS SPECIFICATIONS.
  - INSPECTION ON COMPLETION OF THE EXCAVATION PRIOR TO LAYING THE PIPE
  - INSPECTION OF PRESCRIBED BEDDING AND THE COMPACTION OF SURROUNDINGS MATERIAL UP TO THE CENTER LINE LEVEL OF PIPE
  - AIR AND WATER TEST, AS PRESCRIBED IN THE STANDARD SPECIFICATION, SANS 1200, ARE TO BE CONDUCTED AFTER THE PLACING AND COMPACTION OF THE BACKFILL. CONTRACTOR MUST PRESSURE TEST THE PIPELINE PRIOR TO BACKFILLING, AT THEIR OWN EXPENSE, TO AVOID EXCAVATION OF THE FINAL BACKFILL
  - DENSITY TEST MUST BE CONDUCTED ON BEDDING AND BACKFILL MATERIAL. CORRELATED DCP TEST WILL BE ACCEPTED UNLESS OTHERWISE SPECIFIED.
  - INSPECTION OF THE CONSTRUCTION OF THE MANHOLES AND COMPLETION OF THE BACKFILL.
  - CCTV INSPECTIONS ARE TO BE CONDUCTED ON ALL SECTIONS OF THE PIPE. THE CCTV VIDEO AND REPORTS ARE TO BE SUBMITTED AS PART OF THE AS-BUILT INFORMATION.

- BEDDING AND BACKFILLING**
- ALL BEDDING MATERIAL MUST BE OF SELECTED GRANULAR MATERIAL WITH PI LESS THAN 6 AND FREE FROM ORGANIC MATTER, CLAY OR STONES LARGER THAN 20mm.
  - BACKFILL MATERIAL MUST BE HOMOGENEOUS AND MUST BE COMPACTED IN 150mm LAYERS TO 93% MOD AASHTO DENSITY.
  - DENSITY TESTS MUST BE CARRIED OUT ON THE BACKFILL AND RESULTS TO BE SUBMITTED AS PART OF THE AS-BUILT INFORMATION.

**COPYRIGHT NOTE**  
THIS DRAWING IS SUBJECT TO COPYRIGHT AND MAY NOT BE REPRODUCED, IN WHOLE OR PART, OR IN ANY MANNER WHATSOEVER WITHOUT WRITTEN PERMISSION FROM TEKCIV CONSULTING ENGINEERS.

**TEKCIV CONSULTING ENGINEERS**  
25 Arend Avenue  
Randpark  
Randburg  
GAUTENG  
PO Box 1347  
Cresta  
2118  
GAUTENG  
+27 (0)83 468 5910  
geoff@tekci.co.za  
www.tekci.co.za

DESIGNED	B. DENYSSCHEN
DRAWN	B. DENYSSCHEN
CHECKED	A. COMLEY
SIGNATURE	
APPROVED BY:	A. COMLEY 2020/08/03
Pr. Tech (Eng) :	200870219
SIGNATURE	

**Johannesburg Water**

17 HARRISON STREET  
MARSHALLTOWN  
2107  
TEL: (011) 688-1400  
FAX: (011) 688-1529

**RIVERVIEW EXT 84  
NEW SEWER CONNECTION  
LAYOUT PLAN**

**AMENDMENTS**

SCALE	REV.	DESCRIPTION	APPROVED	DATE
AS SHOWN	A	ISSUED FOR INFORMATION	A. COMLEY	2020/08/03

0 10 20 40 60 80m  
80m

**AS SHOWN**

1754/84/400S PROJECT No.  
A REV.  
A1 SHEET 1 OF 1  
ORIGINAL PAGE SIZE  
FILE No.