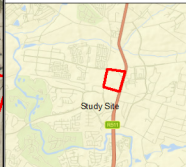


PROJECT:

STEYN CITY PROPERTES

RIVERSIDE VIEW EXTENSION 84



GENERAL NOTE:
Coordinate System: GCS WGS 1984
Datum: WGS 1984
Units: Degree

Storm water Management Multiple Releases

Legend

- Riverside View Extension 84
- Alternation 1- Grass Lined Pond
- Alternation 2- Runoff Storage Field
- Alternation 3- Grass Lined Basin
- Alternation 4- Grass Lined Pond
- Alternation 5- Grass Lined Pond
- Alternation 6- Grass Lined Pond
- New Stormwater Pipes
- Stormwater
- Outward Wetland
- 30m buffer

REVISIONS:

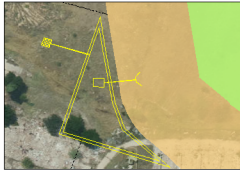
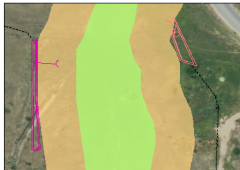
Rev:

CLIENT:
Steyn City Properties (Pty) Ltd.

Scale	1:3,000
Drawn by	ZNE/ST/WWP
Drawn by Status	FINAL



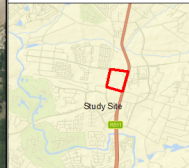
PRISM
Environmental Management Services
P.O. Box 1403
Wynburg 1601
Tel: 011 965 0361
Fax: 011 965 4405
prism@prismenv.com.za
www.prismenv.com.za



PROJECT:

STEYN CITY PROPERTES

RIVERSIDE VIEW EXTENSION 84



GENERAL NOTES:
Coordinate System: GCS WGS 1984
Datum: WGS 1984
Units: Degree

Degraded Grassland Area to be Conserved

Legend

- SymbolID**
- 0
 - Riverside View Extension 84
 - Delimited Wetland
 - 30m buffer
- Name**
- Degraded grassland (low medium sensitivity)
 - Decided to be conserved

REVISIONS:

None

CLIENT:
Steyn City Properties (Pty) Ltd.

Scale	Author	Checked
SCALE: 1:3,000		
DRAWING REF: 21637-01-000000		
DRAWING STATUS: FINAL		



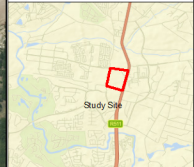
Prism EMS
P.O. Box 1403
Wintervald
Tel: 087 965 0361
Fax: 018 021 4305
prism@prismems.co.za
www.prismems.co.za



PROJECT:

STEYN CITY PROPERTES

RIVERSIDE VIEW EXTENSION 84



GENERAL NOTES:
 Coordinate System: GCS WGS 1984
 Datum: WGS 1984
 Units: Degree

Storm water and Artificial sources of water

Legend

- Historic Earth Dam
- Historic drainage channels
- Riverside View Extension 84
- Deconstructed Watered
- 50m buffer

REVISIONS:

No.	Description
1	Final

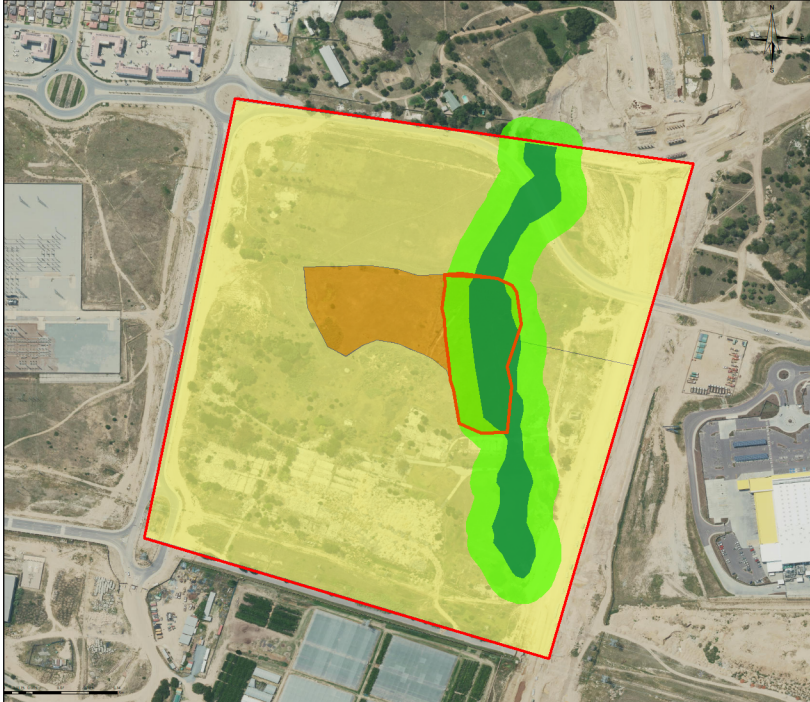
CLIENT:
Steyn City Properties (Pty) Ltd.

Scale	1:3,000
Drawing No.	21637-A-0101
Drawing Status	FINAL

PRISM
 ENVIRONMENTAL MANAGEMENT SERVICES

Plot 6066
 P.O. Box 1403
 Midrand 2010
 Tel: 011 785 2001
 Fax: 011 651 4805
 prism@prismenv.co.za
 www.prismenv.co.za





PROJECT:
**STEYN CITY
 PROPERTIES**
**RIVERSIDE VIEW
 EXTENSION 84**



GENERAL NOTES:
 Coordinate System: GCS WGS 1984
 Datum: WGS 1984
 Units: Degree

**Final Sensitivity
 Map**

- Legend**
- Riverside View Extension 84
 - Significant Grassland (to be conserved as part of wetland and wetland buffer)
 - Moderate-High
 - Moderate
 - Low-Moderate
 - Low

REVISIONS:
 None

CLIENT: Steyn City Properties (Pty) Ltd.	
SCALE: 1:3,000	DATE: 2023/07/20
DRAWING REF: 21637-Final Sens-3	DRAWING STATUS: FINAL

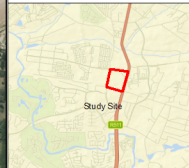
PRISM
 ENVIRONMENTAL MANAGEMENT SERVICES

Plot 6066
 P.O. Box 1401
 Wintervue-ave
 Tel: 011 965 0361
 Fax: 011 965 4405
 prism@prismenv.co.za
 www.prismenv.co.za

PROJECT:

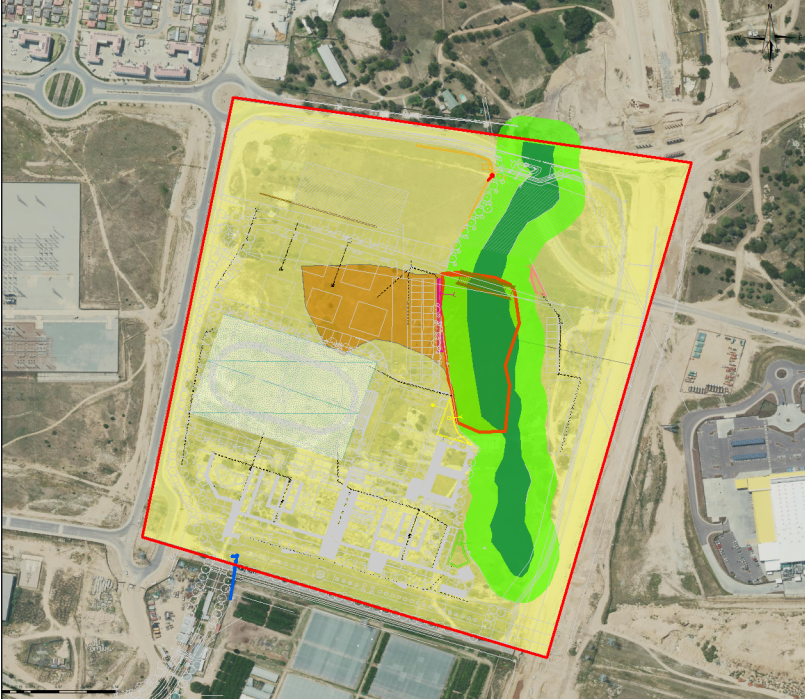
STEYN CITY PROPERTIES

RIVERSIDE VIEW EXTENSION 84



GENERAL NOTES:
 Coordinate System: GCS WGS 1984
 Datum: WGS 1984
 Units: Degree

Final Sensitivity Map



Legend

- Riverside View Extension 84
- Train station structure and connection
- New Water Connection
- Wet Pond
- Station Structure
- Alternative 1 - Green Land Point
- Alternative 2 - Green Land Point
- Alternative 3 - Green Land Point
- Alternative 4 - Green Land Point
- Alternative 5 - Green Land Point
- Alternative 6 - Green Land Point
- Alternative 7 - Green Land Point
- Alternative 8 - Green Land Point
- New Greenfield Pines
- Wetlands
- Proposed Extension
- Wetlands (shown on the contour as part of wetland and analyzed below)
- Wetland-High
- Wetland
- Wetland-Low
- Low
- Very Low

REVISIONS:

REV	DESCRIPTION	DATE
1	Final	

CLIENT: Steyn City Properties (Pty) Ltd.

SCALE: 1:3,000
DRAWING REF: 21637 Final Sens-3
DRAWING STATUS: FINAL

PRISM
ENVIRONMENTAL MANAGEMENT SERVICES

Prism SMS
P.O. Box 1401
Wynberg 7800
Tel: 021 965 0301
Fax: 021 965 4405
prism@prismms.co.za
www.prismms.co.za