

Northam Platinum PV Plant Limpopo Province

Layout and Sensitivity Map

Legend

- Eskom Substation
- Proposed Access Route
- Main Road
- Regional Road
- Existing Power Line
- Perennial River
- ▨ NFEPA Wetlands
- ▭ Study Area
- ▭ PV Area - 20ha
- ▭ Farm Portions

Environmental Sensitivities

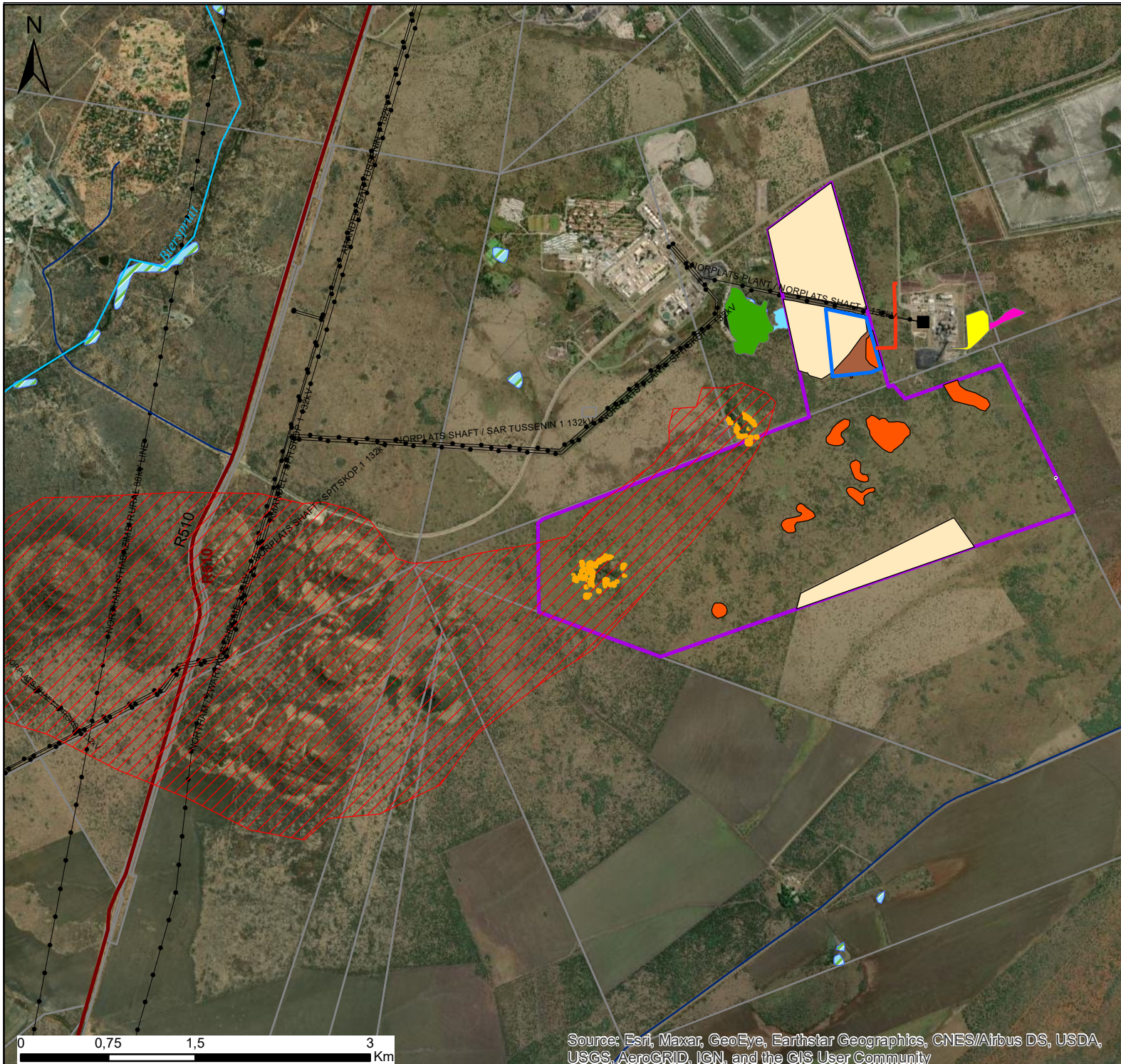
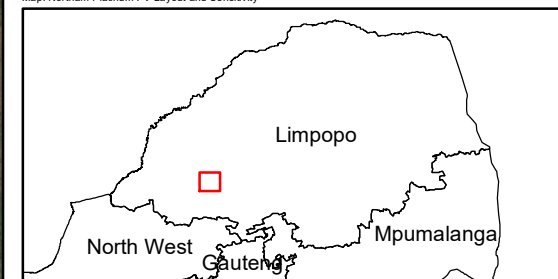
- Stonewalling Outlines
- ▨ Archaeologically Sensitive Area
- ▭ Degraded Bushveld (Medium Sensitivity)
- ▭ Rocky Outcrops (Medium Sensitivity)
- ▭ Low Soil Sensitivity
- ▭ Medium Soil sensitivity

Delineations

- ▭ Impoundment
- ▭ Seep
- ▭ Smelter Dam
- ▭ Smelter Drainage

Scale: 1:50,000
 Projection: LO29 WGS 1984
 Map: Northam Platinum PV Layout and Sensitivity

savannah
 environmental



Source: Esri, Maxar, GeoEye, Earthstar Geographics, CNES/Airbus DS, USDA, USGS, AeroGRID, IGN, and the GIS User Community