

**APPENDIX A: COMPANY PROFILE AND CV OF EAP**



## COMPANY PROFILE



**10 YEARS OF  
SUSTAINABLE  
GROWTH  
2015**

Environmental Consultants  
Environmental Auditors  
Aquatic & Wetland Specialists  
Ecological Specialists  
Air Quality Specialists  
License Application Facilitators  
Mining Consultants  
Environmental Legislation Consultants

---

# Company Overview

Prism Environmental Management Services (Pty) Ltd is a multi-disciplinary Environmental Management consulting firm. With a vision encompassing a holistic understanding of integrated environmental management in partnership with sustainability, the company prides itself on excellent service and value-added solutions to a range of clients. Established in 2005, the company has grown from strength to strength, expanding to two offices with a team of professionals with a diverse range of specialities.

With exceptional field-expertise, command and execution of the relevant legislative requirements and report quality, the company is recognised by clients, fellow consultants, and various Local and Provincial Authorities as a prominent service provider in our field of consulting.

## Our Vision, Mission and Commitment

### ***OUR VISION***

Sustainability through Environmental Management Excellence.

### ***OUR MISSION***

Prism Environmental Management Services is a specialist environmental services provider, assuring excellence in environmental resource assessment and management. We stand in partnership with our clients, our employees, the community and the environment. Our ambition is to conserve resources, preserve natural habitats and prevent significant environmental impacts, by means of sustainable utilisation of our precious natural resources.

### ***OUR COMMITMENT***

The management and staff of Prism Environmental Management Services are committed to:

- Continued improvement of our customer relationships, ensuring customer satisfaction and superior service levels
- Providing professional and purposeful services at all times
- Following appropriate procedures to ensure the correct management and ongoing building of a sustainable environment
- Ongoing development of our staff to meet the challenges of our market
- Utilising experienced, well trained and technically competent staff
- To be dynamic in all dealings with our customers, colleagues and the environment
- Providing multi-faceted services to our clients through our variety of specialist disciplines; and
  - Embracing honesty, trust, teamwork, diversity and relationships that are beneficial to all involved.

---

# Experience

The team at Prism EMS has extensive experience in Integrated Environmental Management (IEM) having completed numerous Basic Assessment Reports, Environmental Scoping Reports, Environmental Impact Assessments (EIA's) and Environmental Management Plans (EMP's) in terms of the National Environmental Management Act, 1998 and the National Environmental Management: Waste Act, 2008 as well as a wide range of specialist studies for a range of authorisation applications. Prism EMS is also involved in assisting various town planners and prominent developers with EIA applications, EMP's, Open Space Management Plans, Riverine- and Wetland Assessments and Delineations, Riverine and Wetland Management Plans, Ecological Studies, Air Quality Impact Assessments and other specialist studies. The consultancy also facilitates Water Use License Applications (WULAs).



With global emphasis placed on aquatic resources and the conservation thereof, it is important to know that Prism EMS are specialists in the field of assessment, delineation, management and conservation of aquatic resources. Our highly qualified team has extensive knowledge of aquatic fauna and flora and have completed numerous wetland- and riverine assessments and delineations. Members of our team are acknowledged as leaders in the field of wetland assessment and delineation by peers and authorities alike.

Auditing and on-site monitoring also form part of the range of services the consultancy offers – be it environmental control officers (ECOs) during the construction phase of developments, environmental monitors (EMs) for the project engineering team on sites, or environmental officers (EOs) for contractors. The common goal aimed at, and achieved within these roles, is the overseeing, implementation and compliance with the Environmental Authorisation (EA) and EMP.

Consultants in our team have in-depth experience in the environmental component of the mining industry, regulated by the Mineral and Petroleum Resources Development Act, 2002 and with strong emphasis on the National Water Act, 1998, and National Environmental Management Act, 1998. Services offered to the mining industry include, but are not limited to, Closure Plans, Rehabilitation Fund Calculation, Basic Assessments, Environmental Impact Assessments, Environmental Management Plans, Environmental Management Implementation, Performance Assessments, Water Use License Applications, Bio-diversity Assessments and various Specialist Assessments as part of EMP amendments and new mining activities.

Prism EMS has also expanded its services to encompass the Air Quality field. The consultancy and its associates are able to conduct Air Quality Impact Studies, Air Emissions modelling and also facilitate Air Emissions Licensing (AEL).

To summarise, Prism EMS is an accomplished consultancy, confident that we can successfully fulfil client requirements, from project planning to completion. The multi-faceted character of the company is evident from the range of disciplines abridged below.



---

# Scope of Services

## ***ENVIRONMENTAL IMPACT MANAGEMENT***

- Environmental Impact Assessments (EIAs)
- Basic Assessment processes & Reports (BARs)
- Environmental Management Plans (EMPs)
- Site-specific EMPs
- Water Use License Applications (WULAs)
- Waste License Applications
- Air Emissions Licenses

## ***ENVIRONMENTAL PLANNING***

- Environmental Management Systems (conforming to ISO 14001)
- Environmental Site Selections and Planning at Pre-Feasibility Phase
- Environmental Procedures and Environmental Specifications

## ***ENVIRONMENTAL AUDITING & MONITORING***

- ISO 14001 Environmental Management Systems
- Environmental Authorisations (and previous RoDs)
- Environmental Management Plans and Programmes for construction projects and mining
- Water Use Licenses
- Waste Licenses
- Green Building developments (conforming to MANUAL-6 & MANUAL-7 of the GBCSA requirements for Green Building)
- All levels of Environmental Monitoring & Control for construction projects representing Clients as:
  - Environmental Officer
  - Environmental Monitor
  - Independent Environmental Control Officer (ECO)

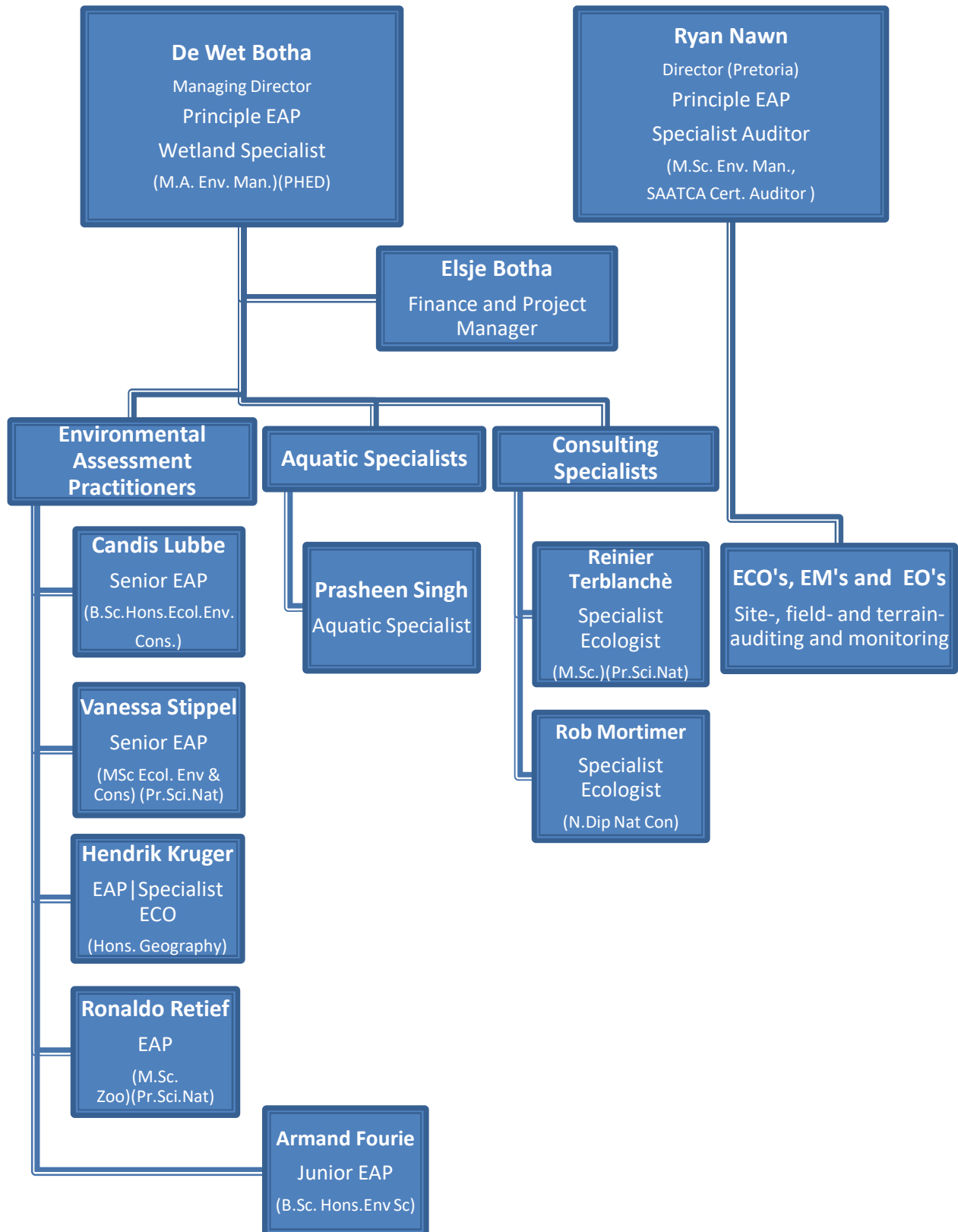
---

# Specialist Solutions

The list of specialist services we offer and facilitate includes, *inter alia*, the following:

- Ecological Habitat Assessments
- Aquatic Health Assessments (including SASS5)
- Wetland and Riparian Habitat assessments and delineation
- Rehabilitation plans and mitigatory strategy
- Aquatic and Ecological Monitoring Plans
- Bio-monitoring
- Biodiversity action plans
- Grassland rehabilitation
- Ridge Studies
- Air Quality Impact Assessments
- Geographic Information System (GIS) mapping
- Sensitivity mapping
- Legislation and process guidance
- Policy Development
- Open Space Management Plan (OSMP)
- Public Participation Processes
- EIA Review
- Specialist Auditing
- In terms of Mining Activities we facilitate:
  - Prospecting Right Applications
  - Prospecting Environmental Management Plans
  - Mining Right Applications
  - Closure Applications
  - Closure Cost Calculations
  - Annual Performance Audits (against relevant permits and licenses)

# Company Organogram



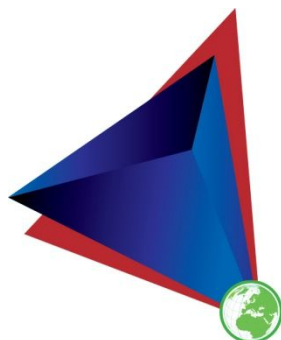
---

## Contact Us

Johannesburg:	Pretoria:
Tel No: 087 985 0951	Tel No: 012 342 2974
Fax No: 086 601 4800	Fax No: 086 552 1590
E-mail: <a href="mailto:prism@prismems.co.za">prism@prismems.co.za</a>	E-mail: <a href="mailto:prismpretoria@prismems.co.za">prismpretoria@prismems.co.za</a>
Unit 17 Coldstream Office Park	89 Burns Street
Coldstream Street	Colbyn
Little Falls	Pretoria

Visit our website [www.prismems.co.za](http://www.prismems.co.za)

or find us on Social Media:



**PRISM**  
ENVIRONMENTAL MANAGEMENT SERVICES



## Curriculum Vitae: Ms C Lubbe

Name : **LUBBE, CANDIS**  
Date of Birth : 3 October 1983  
Profession/Specialisation : Senior Environmental Assessment Practitioner  
Nationality : South African  
Years' experience : 10

### Key Experience

**Candis Lubbe** has ten (10) years' working experience as an environmental consultant in the general industry and mining sectors. Key experience includes the overall project lifecycle management of environmental authorisation applications such as basic assessments, Environmental Impact Assessments (EIAs), Waste Licences, Water Use Licence Applications, and Rectification of unlawful activities (Section 24G Applications) including the associated public participation processes. Additional experience comprises the compilation of mining and prospecting applications, environmental management programmes and plans, financial provision calculations and providing continuous environmental and legal guidance to existing mining operations of various minerals (silica, aggregate, gold, chrome, pyrophyllite and tailings reclamation).

Ms. Lubbe also has experience related to the assessment of complex sites, operations and facilities including general environmental management, legal compliance assessments, due diligence, assessment of potential land contamination, environmental performance audits (MPRDA), and auditing of Environmental Authorisations (WUL and NEMA).

### Key Qualifications

#### **BSC HONOURS (ECOLOGY, ENVIRONMENT AND CONSERVATION)**

University of the Witwatersrand (2006)

#### **BACHELOR OF SCIENCE (ZOOLOGY)**

University of the Witwatersrand (2005)

### Supplementary Training

- ) **General water Use Authorisations (2017)**  
IMBEWU Sustainability Legal Specialists
- ) **Financial Provision Regulations and Mine Closure Requirements (2016)**  
IMBEWU Sustainability Legal Specialists.
- ) **SA Waste Laws Update Workshop (2015)**  
Laura Taylor, EnviroSus.
- ) **Basic Principles of Ecological Rehabilitation and Mine Closure (2014)**  
CEM, North-West University Potchefstroom Campus.
- ) **Contaminated Land Workshop (2013)**  
IMBEWU Sustainability Legal Specialists.
- ) **Technical & Legal Guidelines for EIAs (2011)**  
DLA Cliffe Dekker Hofmeyer.
- ) **Introduction to Integrated Waste Management for Environmental Managers (2011)**  
CEM, North-West University Potchefstroom Campus.
- ) **Cross Cutting & Integrated EIA Training (2011)**  
IMBEWU Sustainability Legal Specialists.
- ) **Public Participation (2009)**  
CEM, University of the Free State.

- J **Project Management for Environmental Impact Assessments (2009)**  
CEM, University of the Free State.
- J **Social Impact Assessment(2009).**  
CEM, University of the Free State.
- J **Environmental Awareness & Legal Liability for Managers (2008).**  
Green Gain Consulting.
- J **Monitoring of Ecological Success Criteria for Mine Site Closure.**  
David Tongway, University of Western Australia (held in SA).
- J **Environmental Law for Environmental Managers(2007).**  
CEM, North-West University Potchefstroom Campus.

### Employment Record

Nov 2015 – To date	<b>PRISM Environmental Management Services</b> Senior Environmental Assessment Practitioner
Aug 2010 – Oct 2015	<b>Umhlaba Environmental Consulting CC</b> Environmental Consultant
Jan 2007 – Sep 2007	<b>EcoPartners (Pty) Ltd</b> Junior Environmental Consultant
Oct 2007 – Jun 2009	<b>EnviroServ Waste Management (Pty) Ltd</b> National Junior Project Co-ordinator
Jul 2009 – Jul 2010	<b>EcoPartners (Pty) Ltd</b> Environmental Scientist

### Project Experience

#### **Environmental Authorisation Process (BA, EIA, WL, WULA):**

- J Happy Island: EIA and WULA for development of a Water Park, 2016
- J Macsteel Tube & Pipe: Lillianton: Basic Assessment for Decommissioning of Galvanising Plant, 2016.
- J Sand Shifters: Nietgedacht EIA, Waste Licence and WULA for storage, handling and distribution of building waste, 2016.
- J Northam Platinum Limited: Basic Assessment for AEL Amendment for Smelter Expansion, 2016.
- J Goedeberg: WULA for Bulk Sewer Line Installation, 2016.
- J Gold One: Modder East: EIA and Waste Licence, 2015.
- J HALO Aviation: Basic Assessment for Heliport, 2012.
- J AfriSam: Jukskei: Basic Assessment for Construction of Infrastructure within a Watercourse, 2011.
- J Gold Fields: Public Participation Process and Socio-Economic Study for EIA, 2009.
- J Gold Fields: EIA for Mega Tailings Storage Facility (team project), 2009.
- J Savcio Holdings: LH Marthinusen: Basic Assessment Process, 2009.
- J Modikwa Platinum: Basic Assessment (not completed), 2009.
- J Savcio Holdings: LH Marthinusen: Basic Assessment for treatment of used oil, 2008.
- J Spray Pave: Basic Assessment for storage for dangerous goods (not completed), 2008.
- J Oil Separation Solutions: Waste Permit: Assisted with compilation of Section 20 of ECA, 2007.
- J Old Oil Man: Waste Permit: Assisted with compilation Section 20 of ECA, 2007.

#### **Section 24G Applications:**

- J Assore: Rustenburg Mineral Development Company: Groenfontein: Section 24G Application, 2014.
- J Assore: Rustenburg Mineral Development Company: Zandspruit: Section 24G Application, 2014.
- J Assore: Wonderstone Limited: Section 24G Application, 2014.
- J Assore: Zeerust Chrome Mines Limited: Section 24G Application, 2014.
- J Rubble Tech: London Road: Section 24G Application, 2013.
- J JPL Sawmills: Section 24G Application, 2011.
- J Spray Pave: Section 24G Application, 2008.

**Mining/Prospecting Applications, EMPLans and Amendments:**

- ) Jukskei Sand Project CC: Section 106 Notification, 2011.
- ) Mining Permit / Prospecting Right Applications:
  - o Benoni South: Prospecting Right Application & Basic Assessment, 2016.
  - o Bundu Sand: Mining Permit Application and EMPlan, 2014.
  - o Heidelberg Clay & Brick Sand: Mining Permit Application, 2014.
  - o Infrasons: Marble Hall: Mining Right Application (not completed), 2013.
  - o BSC Resources: KZN5: EMPlan Amendment, 2012.
  - o Gold One: Ventersburg 6: EMPlan & Amendment, 2012.
  - o Jukskei Sand Project CC: Mining Permit Application, 2012.
  - o Uitzicht Sands: EMPlan, 2011.
  - o Whitewater Westward Exploration: EMPlans for C1, C2A and C3, 2010.
  - o Goliath Gold Mining Limited: Blinkpoort: EMPlan Amendment, 2012.
- ) Financial Provisions:
  - o Janho Quarry: Financial Provisions, 2016.
  - o Goliath Gold Mining Limited: Nigel: Financial Provision, 2011.
  - o Goliath: Sub-Nigel: Financial Provision, 2012.
  - o Group Five: Laezonia: Financial Provision, 2012.
  - o Raumix: Rossllyn: Financial Provision, 2012.
  - o Renewals:
    - o AfriSam: Saldanah: Prospecting Right Renewal, 2011.
    - o BSC Resources: Prospecting Right Renewal Environmental Report, 2011.
    - o Gold One: Wit Nigel: Right Renewal: Environmental Report, 2011.
    - o Uitzicht Sand: Mining Permit Renewal, 2014.
    - o Gold One: Ventersburg 3&4: Prospecting Right Renewal, 2013.
- ) Closure Applications:
  - o Group Five: Panfontein: Closure Application (PR), 2013.
  - o Tradmil Trading 10 (Pty): Vischgat: Closure Application MP & PR, 2013.

**EIA/EMP Amendments (Section 102 MPRDA):**

- ) Drift Supersand: EMP Amendment, 2015.
- ) Group Five: Zimbiwa Resources: EMP Amendment, 2012.
- ) AfriSam: Zeekoewater: EMP Amendment, 2011.
- ) Gold One Limited: Ventersburg: Natural Gas Exploration EMP Amendment, 2011.
- ) Raumix: Aliwal: EMP Amendment (assist), 2011.
- ) Raumix: Queenstown: EMP Amendment (assist), 2011.
- ) Gold One Limited: Ventersburg: Natural Gas Exploration EMP, 2010.
- ) Gold Fields: Driefontein: EMP Amendment, 2010.

**Environmental Performance Assessment Audits (Regulation 55 MPRDA):**

- ) Janho Quarry: Environmental Performance Audit (MR), 2016.
- ) AfriSam: Rheeboek: Environmental Performance Audit (MR), 2015.
- ) Bundu Mining: Environmental Performance Audit (MR), 2015.
- ) Drift Supersand: Environmental Performance Audit (MR), 2015.
- ) PPC: Dwaalboom: Environmental Performance Audit (MR), 2015.
- ) Raumix: Willows: Environmental Performance Audit (MR), 2015.
- ) Group Five: Sky Sands: Environmental Performance Audit (MP), 2014.
- ) AfriSam: Eikenhof: Environmental Performance Audit (MR), 2013.
- ) AfriSam: Olifantsfontein: Environmental Performance Audit (MR), 2013.
- ) PPC: Dwaalboom: Environmental Performance Audit (MR), 2013.
- ) Raumix: Rossway: Environmental Performance Audit (MR), 2013.
- ) AfriSam: Roodekrans: Environmental Performance Audit (MR), 2012.
- ) AfriSam: Ulco Cement: Environmental Performance Audit (MR), 2012.
- ) Goliath: New Kleinfontein - Modder East: Environmental Performance Audit (MR), 2012.
- ) Goliath: Sub-Nigel: Environmental Performance Audit (MR) & Financial Provision, 2012.
- ) Gomes Sands: Bundu Sands: Environmental Performance Audit (MP), 2012.
- ) Gomes Sands: Doornrandjie: Environmental Performance Audit (MP), 2012.

- ) Group Five: Laezonia: Environmental Performance Audit (MP) & Financial Provision, 2012.
- ) New Kleinfontein: Modder East: Environmental Performance Audit (MR), 2012.
- ) Raumix: Petra Quarry: Environmental Performance Audit (MR), 2012.
- ) AfriSam: Rooikraal: Environmental Performance Audit (MR), 2011.
- ) Group Five: Sky Quarries (Tradmil Trading): Environmental Performance Audit (MP), 2011.
- ) Raumix: Rosslyn: Environmental Performance Audit (MR), 2011.
- ) AfriSam: Jukskei: Environmental Performance Audit (MR), 2010.
- ) Gold One Limited: Sub-Nigel: Environmental Performance Audit (MR), 2010.

**Audits (Legal, RoD Compliance / Internal):**

- ) Gold One: Modder East: Water Use Licence Audit, 2015.
- ) PPC: Dwaalboom: Environmental Audit (RoD), 2015.
- ) Assore: Environmental Component of the EHS Legal Compliance Audit, 2014.
- ) Dawn Sanitaryware: Legal Compliance Report for Vaal Sanitaryware and Libra Bathrooms, 2010.
- ) Vaal Sanitaryware: Site Assessment – Manufacturing Process & Waste Streams, 2010.
- ) Gold One Limited: Modder East: Internal Audit, 2010.
- ) Basil Read: Legal compliance audit (team project), 2008.
- ) Oil Separation Solutions: Legal compliance audit (team project), 2008.
- ) NORA-SA: Audit reports for used oil collectors, 2007.
- ) Oil Separation Solutions: Evaluation of Minimum Requirements of ROD Waste Permit, 2007.

**Other:**

- ) Assore: Wonderstone Limited: Waste Classification.
- ) JPL Sawmills: Directive, 2014.
- ) Group Five: Laezonia: Due Diligence, 2013.
- ) PPC: Best Practice Procedure: Waste Management & I&AP Consultation, 2013.
- ) AfriMat: Inferon: Due Diligence, 2012.
- ) Gold One: Ventersburg: BFS Specialist Studies Review (Socio-Economic, Noise and Traffic).
- ) Pronto: Ulula Ash: Environmental Management Plan, 2012.
- ) Eskom: Matimba: Review of SHEQ Impact Register (project team), 2010.
- ) Eskom: Matimba: Training Material: Environmental Awareness and Legal Compliance, 2010.
- ) EnviroServ: Training Material: Legal Compliance & Environmental Awareness, 2009.
- ) Basil Read: SHEQ Legal Register, 2008.
- ) NORA-SA: Operations Manual for Used Oil Collectors, 2007.
- ) Basil Read: Operations and Maintenance Manual for Modimolle Water Tower, 2007.
- ) Oil Separation Solutions: Operational Procedures: Integrated Management System ISO 14001, ISO 9001 and HSAS 18001, 2007.
- ) Oil Separation Solutions: SHEQ Legal Register, 2007.

**Professional Affiliations**

- ) South African Council for Natural Scientific Professions (SACNASP) Registration No: 116831: 2017
- ) Environmental Law Association (ELA): 2015-2016.
- ) International Association Impact Assessment (IAIA): 2011-2013.

## Curriculum vitae: Mr D Botha

Name : **BOTHA, DE WET**  
Date of Birth : 20 June 1977  
Profession/Specialisation : Principle Environmental Scientist & Wetland Specialist  
Nationality : South African  
Years' experience : 13

### Key Experience

**Mr Botha** has extensive experience in conducting a broad range of applications related to authorisation from the various authorities managing Environmental Legislation in South Africa. Mr Botha has completed numerous EIA's and Basic Assessment Report applications. He has conducted EIA reviews and has acted in a specialist advisory role to other consultants/applicants. Management plans compiled include Environmental Management Plans, Open Space EMPs, Wetland EMP's and Waste Management Plans.

The practitioner has extensive and specialised experience in wetland and aquatic assessment and delineation, as well as applications for Water Use Licenses.

Additional to this, Mr Botha also has experience in Visual Assessments, Specialist Faunal and Floral Surveys, Grassland Rehabilitation and Baseline Agricultural Potential Studies. Mr Botha is an experienced Environmental Control Officer and –Auditor. GIS data and spatial modelling is included in Mr Botha's range of capabilities, along with GIS sensitivity mapping and Project Management.

As a specialist interest, Mr Botha has been involved with research and studying the habitat area of the Juliana's Golden Mole, a Red List threatened species, in association with the Pretoria of University (Dr Sarita Maree).

### Education & Key qualifications

#### **MAGISTER ARTIUM (M.A. Environmental Management)**

University of Johannesburg (2005-2006)

- Thesis: *Establishing Guidelines for Environmental Management Plans for Golf Course Developments in Gauteng Province.*
- Syndicate research: *Baseline Environmental Assessment investigating the flow of Mercury through the system at the University of Johannesburg in Mercury containing Lighting as a by-product.*
- The biosphere & environmental studies.
- Environmental analysis, management skills & perspectives.

#### **DIPLOMA: REMOTE SENSING AND IMAGE PROCESSING**

Rand Afrikaans University (2001)

#### **DIPLOMA: GEOGRAPHIC INFORMATION SYSTEMS (GIS)**

Rand Afrikaans University (2001)

#### **BACHELOR OF ARTS (HONOURS) (BA. (Hons) Geography and Environmental Management)**

Rand Afrikaans University (2001)

Modules completed:

- Geomorphology
- Energy Technology
- Remote Sensing and Satellite Imagery
- Geographic Information Systems
- Philosophy and Methodology of Geography

## **POST GRADUATE HIGHER EDUCATIONAL DIPLOMA (PHED).**

Rand Afrikaans University (1999-2000)

## **BACHELOR OF ARTS (BA. Geography and Environmental Management)**

Rand Afrikaans University (1996-2000)

### Supplementary Qualifications

- Financial Provision Regulations and Mine Closure Requirements (2016) IMBEWU Sustainability Legal Specialists.
- SASS5 Aquatic Biomonitoring Training Course (DWA, Ground Truth) (2014)
- Tools for Wetland Assessments (Rhodes University) (2011) (Cum Laude) - Certified
- Short Course in Soil Classification and Wetland Delineation (Terra Soil Science) (2008)
- Wetland and Riparian Delineation Course (DWA Accredited) (2008)
- Practical Field Training – Golden Mole Field Surveys (2007) (Dr. S. Maree)
- Lead auditors course (Environmental) ISO 14000 (University of Johannesburg) (2006)
- Geographical Information Systems (GIS) (Run by Geographical Information Management Systems (GIMS) - Introduction to Arcview GIS (2000)
- Geographical Information Systems (GIS) (Run by Geographical Information Management Systems (GIMS) – Introduction and Advance ArcInfo (2000)
- Geographical Information Systems (GIS) Introduction to MapInfo (2000)
- Geographical Information Systems (GIS) Advance and Specialist Map-Info (2000)

### Employment record

August 2005 – Present	Prism EMS, Managing Director, Principle EAP, Wetland Specialist
August 2007 – Present	Greenline Environmental, Director, Principle EAP & Wetland Specialist
April 2004 – July 2005	Holgate and Associates, Environmental Scientist
January 2003 – February 2004	North Westminster Community College (UK), HOD Humanities Dept.
January 2002 – December 2002	Kelmscott Secondary School, (UK), HOD Geography
January 2001 – December 2001	Hoërskool Vryburger, Germiston, Teacher (Geography)
August 1999 – December 2000	The Knowledge Factory (Primedia), GIS Specialist/Product Owner

### Experience record (Key Projects)

#### **Relevant Project Experience** (more detail available on request)

##### **Air Quality Projects:**

- BP Wiggill – Smelter, 2016;
- Northam Platinum, North West, 2015;
- Maroeloesfontein Andalusite Mine, North West, 2015;
- Eco-Planet Bamboo Core Carbon, Grahamstown, Eastern Cape, 2014;

##### **Aquatic Assessments:**

- Sunninghill Ext 168, 2016;
- Happy Island Water Park, 2016;
- Eskom, Rustenburg, North West Province, 2015;
- Steyn City, Johannesburg, Gauteng, 2015;
- Nederburg, Paarl, Western Cape, 2014;

- The Reeds, Johannesburg, Gauteng, 2014;
- Elias Motsoaledi, Soweto, Gauteng, 2014;
- K6 – Provincial Road, Pretoria, Gauteng, 2013;

**Wetland Assessments:**

- Greengate Ext 68, 2016;
- Happy Island Water Park, 2016;
- Wilgeheuwel Ext 60, 2016;
- Rose interchange, Gautrans, 2015;
- Eskom, Rustenburg, North West Province, 2015;
- Mogalakwena Platinum Mine, Limpopo Province, 2015;
- Steyn City, Johannesburg, Gauteng, 2014;
- Nederburg, Paarl, Western Cape, 2014;
- Elias Motsoaledi, Soweto, Gauteng, 2014;

**Recent Water Use License Applications completed, include:**

- Witpoortjie Ext. 52 & 57 Township Development – to facilitate the installation of essential services to the township.
- Winterveld – Installation of bulk sewer lines
- Vista Park Ext.3 - mixed-use township development and related bulk services
- Steyn City - mixed-use township development and related bulk services
- Joburg Water - Installation of bulk sewer lines
- Rooiwaal – Tswane - Installation of bulk sewer lines
- Soshanguve South Ext. 6 – Bridge crossing
- Elias Motsoaledi – Bridge crossing

Professional affiliations

- Founder Member of Environmental Assessment Practitioners Association of South Africa (EAPASA)
- Member of the International Association for Impact Assessors (IAIAsa)
- Member of the Gauteng Wetland Forum
- Member of the South African Wetland Society