



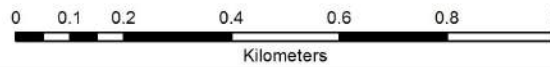
Appendix A

LOCALITY MAPS



KwaZulu-Natal - Upper South - Lund's Wetland - system - T51E-01-02-03-04

-  Quaternary Boundary
-  Wetland Boundary

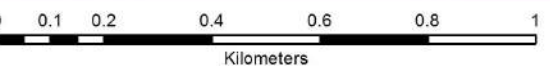


Co ordinate system : Geographic
Datum : WGS84





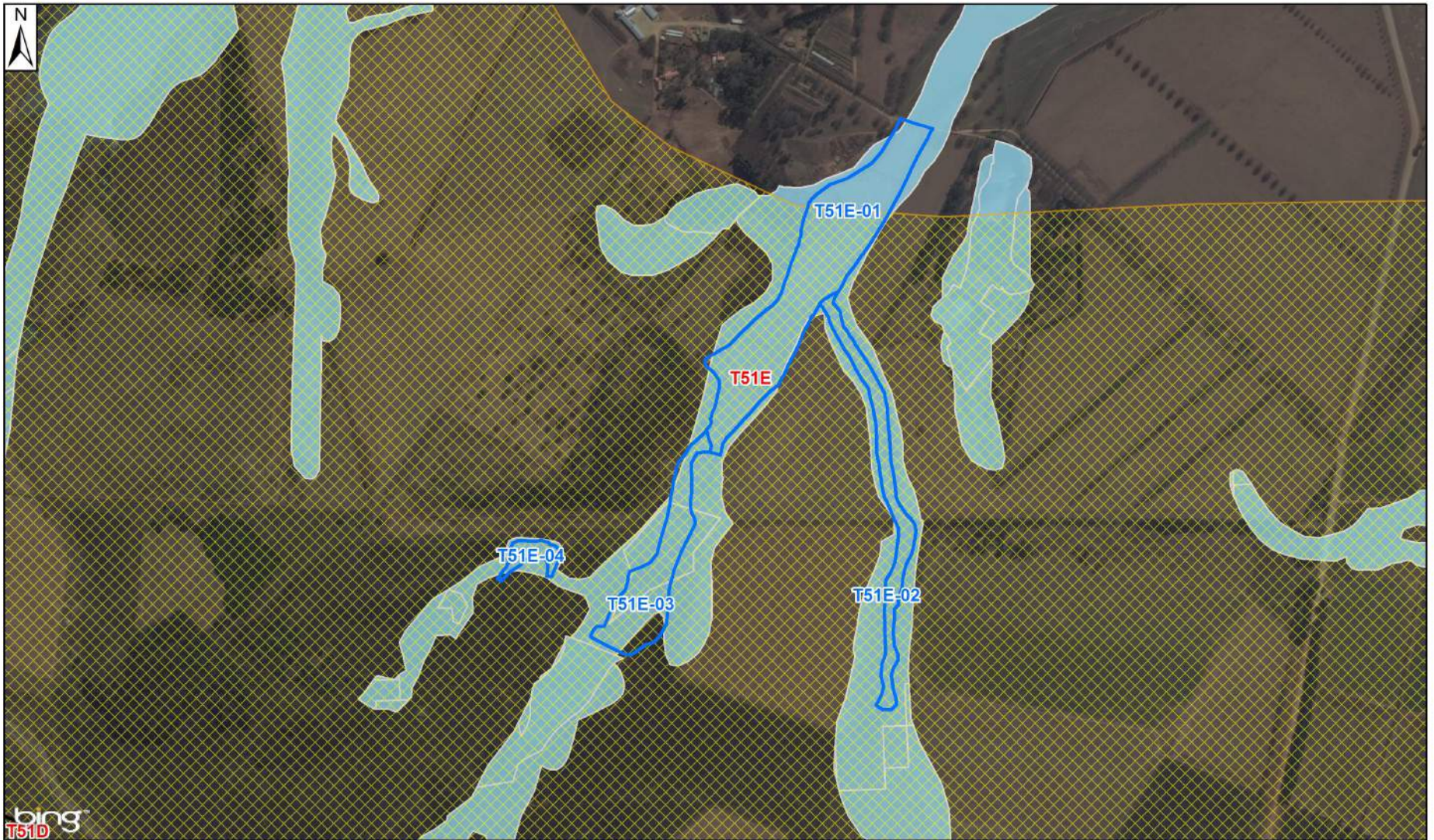
KwaZulu-Natal - Upper South - Lund's Wetland - system - T51E-01-02-03-04



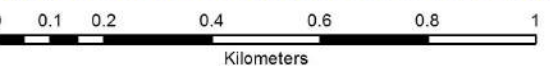
-  Wetland Boundary
- CBA**  Critical Biodiversity Area 1 Mandatory
-  Quaternary Boundary

Co ordinate system : Geographic
Datum : WGS84





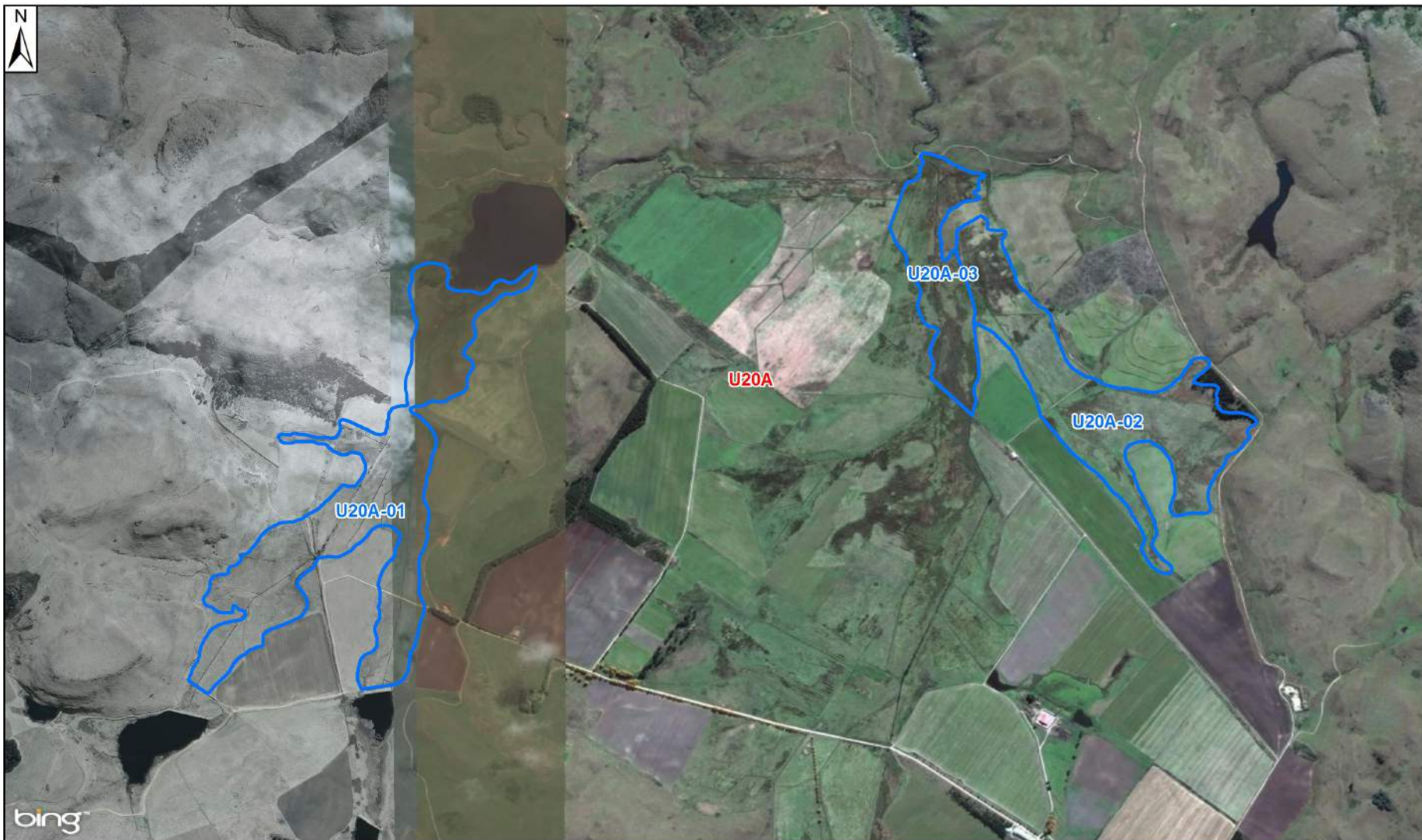
KwaZulu-Natal - Upper South - Lund's Wetland - system - T51E-01-02-03-04



- Wetland Boundary
- Quaternary Boundary
- Vulnerable
- NFEPA Wetlands

Co ordinate system : Geographic
Datum : WGS84





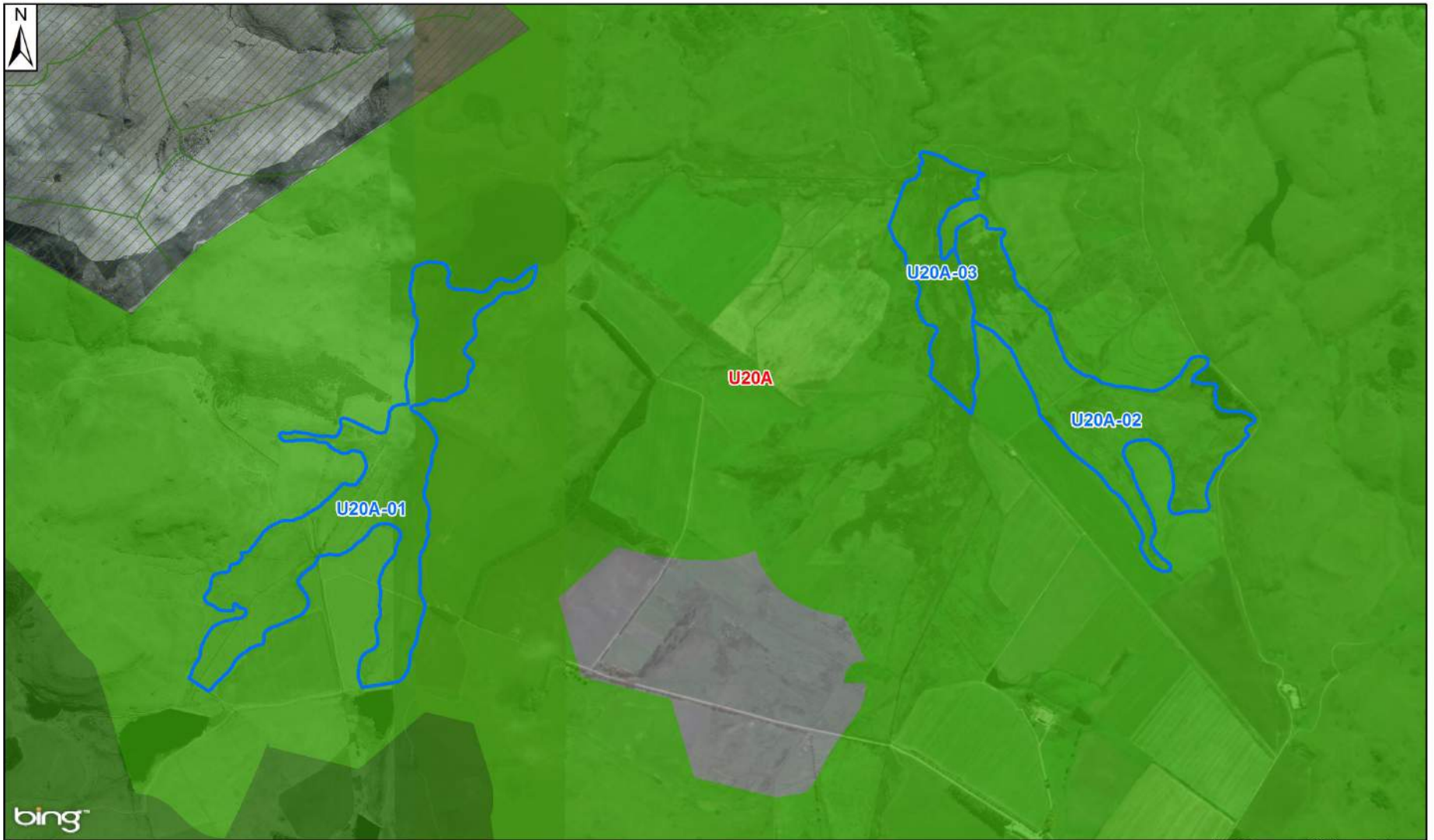
KwaZulu-Natal - Midlands - Ivanhoe - system - U20A-01-02-03

-  Quaternary Boundary
-  Wetland Boundary

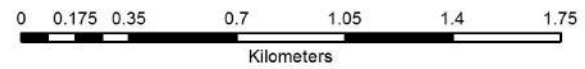


Co ordinate system : Geographic
Datum : WGS84





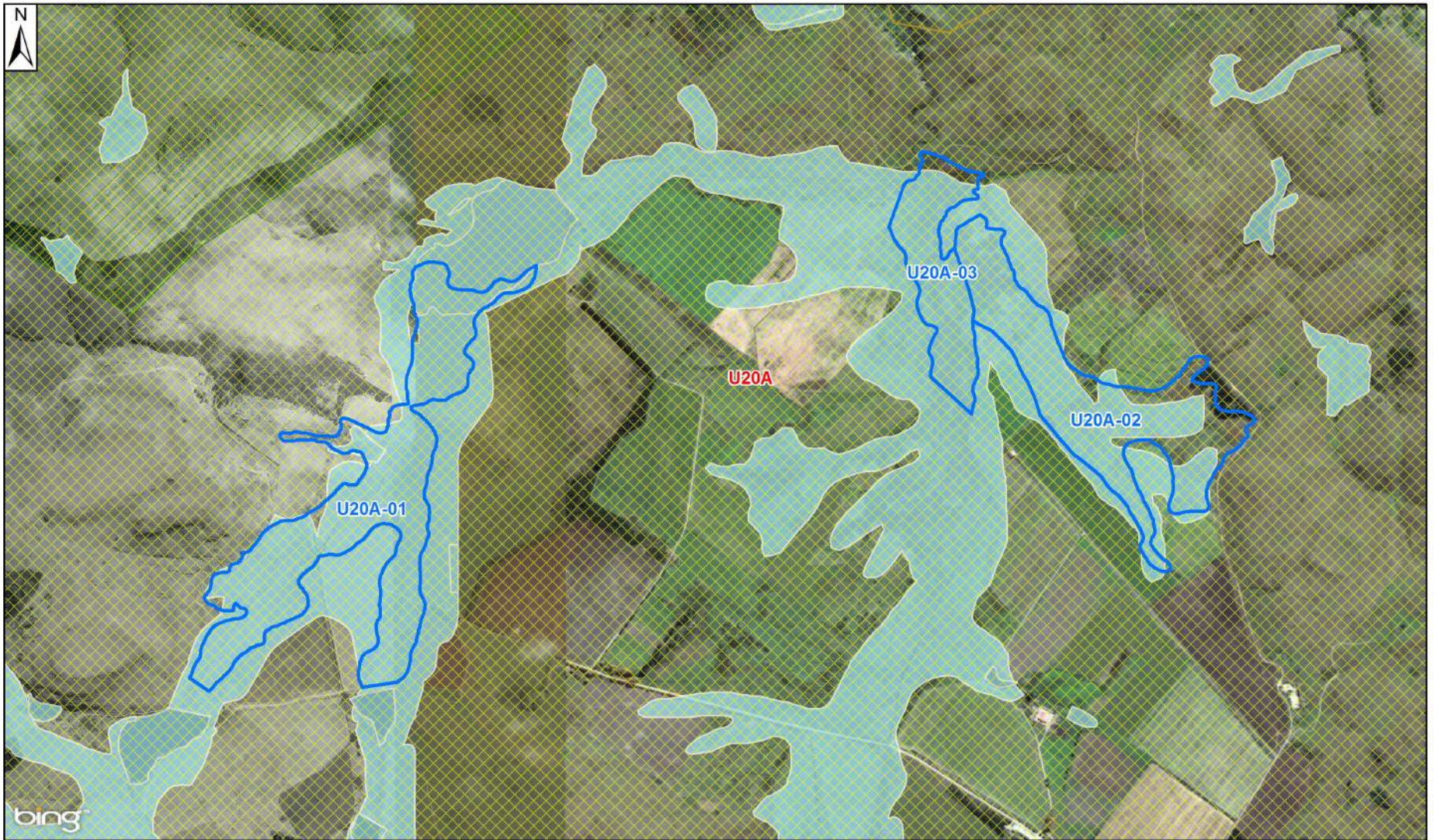
KwaZulu-Natal - Midlands - Ivanhoe - system - U20A-01-02-03



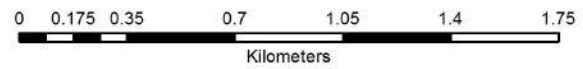
- | | | |
|---------------------|----------------------------|--|
| Wetland Boundary | CBA | Critical Biodiversity Area 1 Mandatory |
| Quaternary Boundary | 100% transformed | Protected areas |
| | Critical Biodiversity Area | |

Co ordinate system : Geographic
Datum : WGS84





KwaZulu-Natal - Midlands - Ivanhoe - system - U20A-01-02-03





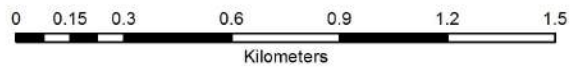
- Wetland Boundary
- Vulnerable
- Protected Areas
- Quaternary Boundary
- NFEPA Wetlands

Co ordinate system : Geographic
Datum : WGS84



KwaZulu-Natal - Midlands - Upper Lions - system - U20B-01-02-03

-  Quaternary Boundary
-  Wetland Boundary



Co ordinate system : Geographic
Datum : WGS84





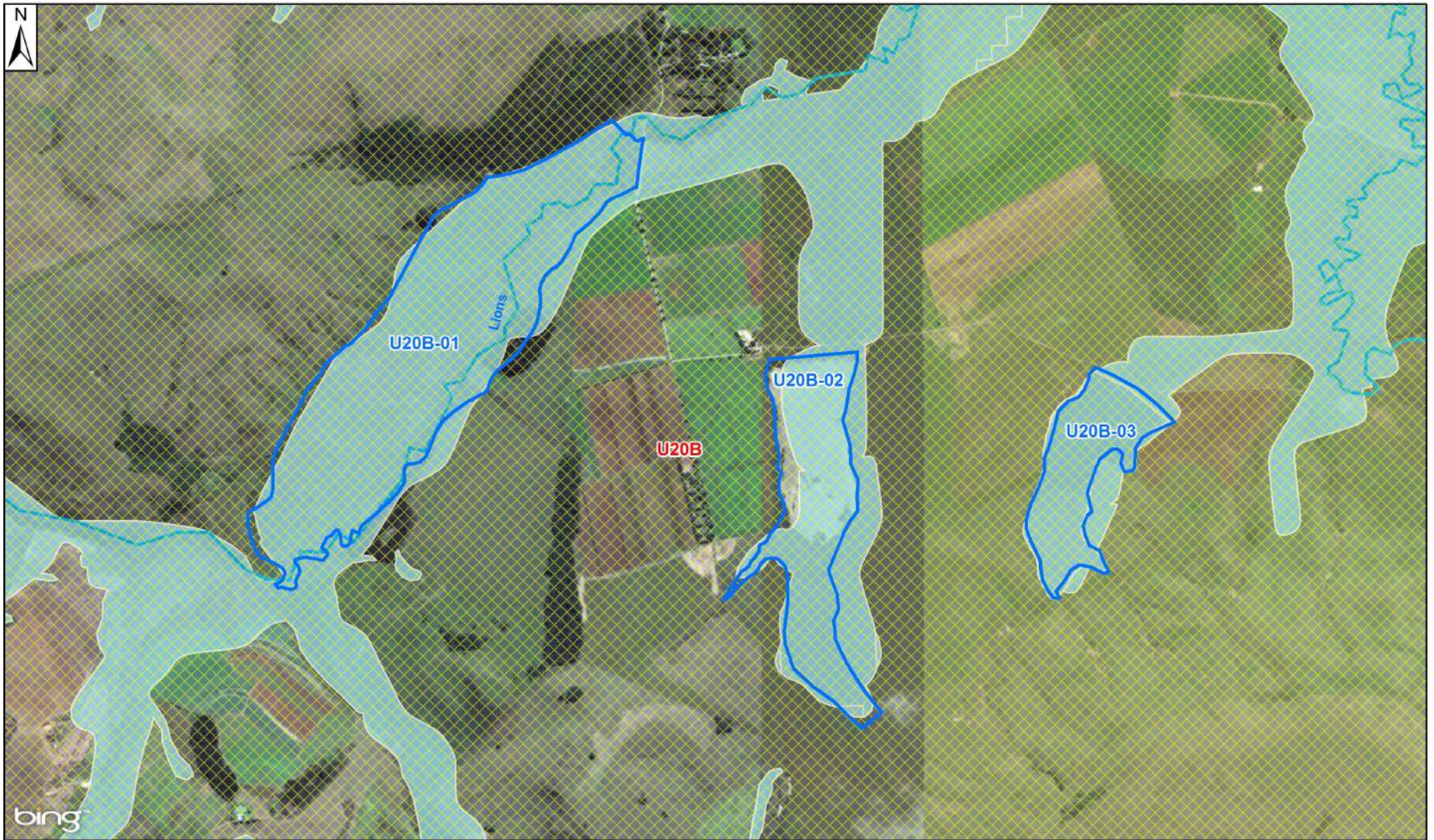
KwaZulu-Natal - Midlands - Upper Lions - system - U20B-01-02-03



- | | | |
|---|--|--|
|  Wetland Boundary |  CBA |  Critical Biodiversity Area 1 Mandatory |
|  Quaternary Boundary |  Critical Biodiversity Area | |

Co ordinate system : Geographic
Datum : WGS84





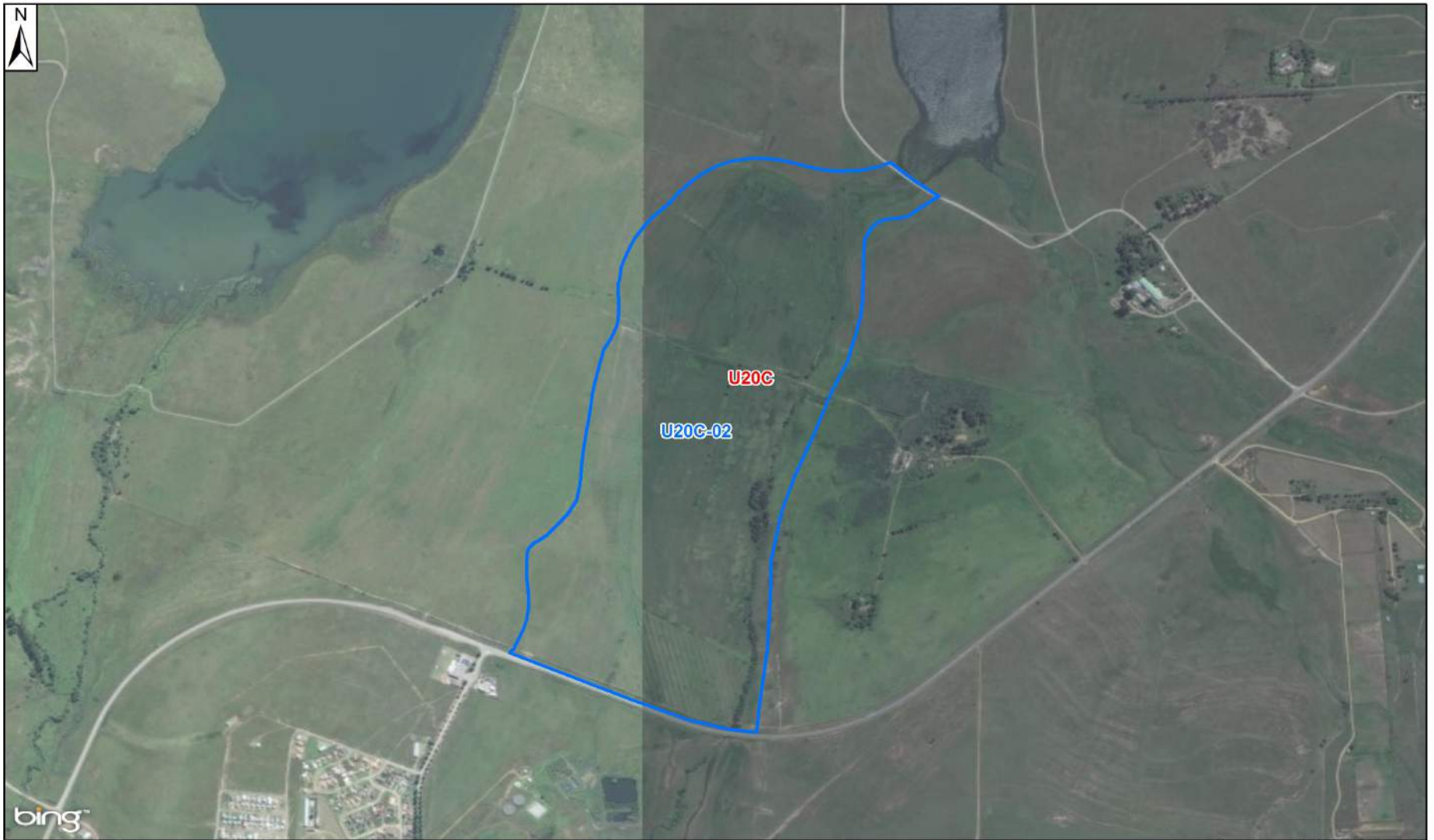
KwaZulu-Natal - Midlands - Upper Lions - system - U20B-01-02-03





- Wetland Boundary
- Quaternary Boundary
- Vulnerable
- NFEPA Rivers
- NFEPA Wetlands

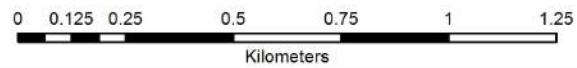
Co ordinate system : Geographic
Datum : WGS84





KwaZulu-Natal - Mpophomeni - Mpophomeni - U20C-02

-  Quaternary Boundary
-  Wetland Boundary



Co ordinate system : Geographic
Datum : WGS84





KwaZulu-Natal - Mpophomeni - Mpophomeni - U20C-02



- | | | |
|---------------------|----------------------------|--|
| Wetland Boundary | CBA | Critical Biodiversity Area 1 Mandatory |
| Quaternary Boundary | 100% transformed | Protected areas |
| | Critical Biodiversity Area | |

Co ordinate system : Geographic
Datum : WGS84





KwaZulu-Natal - Mpophomeni - Mpophomeni - U20C-02



- | | | | |
|---------------------|----------------|--------------|-----------------|
| Wetland Boundary | Vulnerable | NFEPA Rivers | Protected Areas |
| Quaternary Boundary | NFEPA Wetlands | | |

Co ordinate system : Geographic
Datum : WGS84

