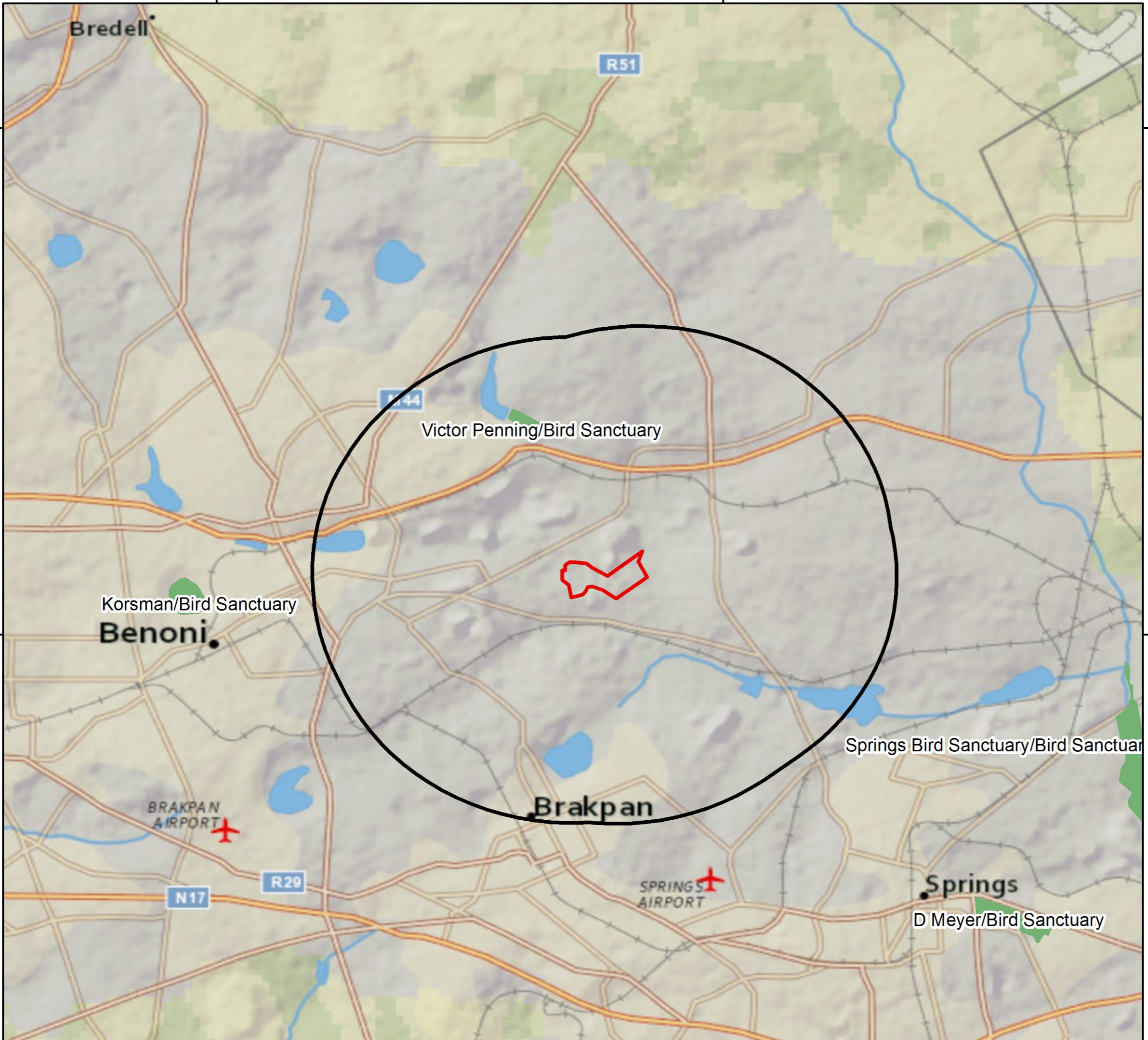


28.3

28.4

-26.1



-26.2

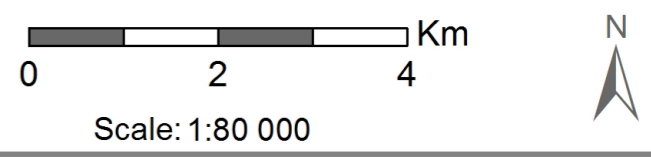
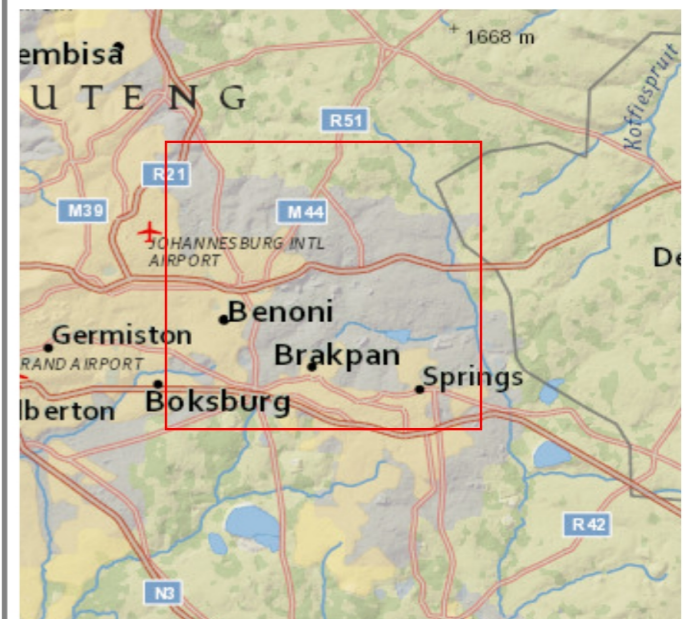


Protected Areas

Atoll Prospecting Right Application

Legend

-  5 km buffer
-  Application Area
-  Protected Areas



Data Sources:
ENPAT 2000; CSG, ESRI

Coord System: GCS WGS 1984
Datum: WGS 1984
Units: Degree
Ref: Protected Areas

Date: 2016/02/05
EIMS Ref: 1048
Compiled: ND
Reviewed: ND
Approved: LW

