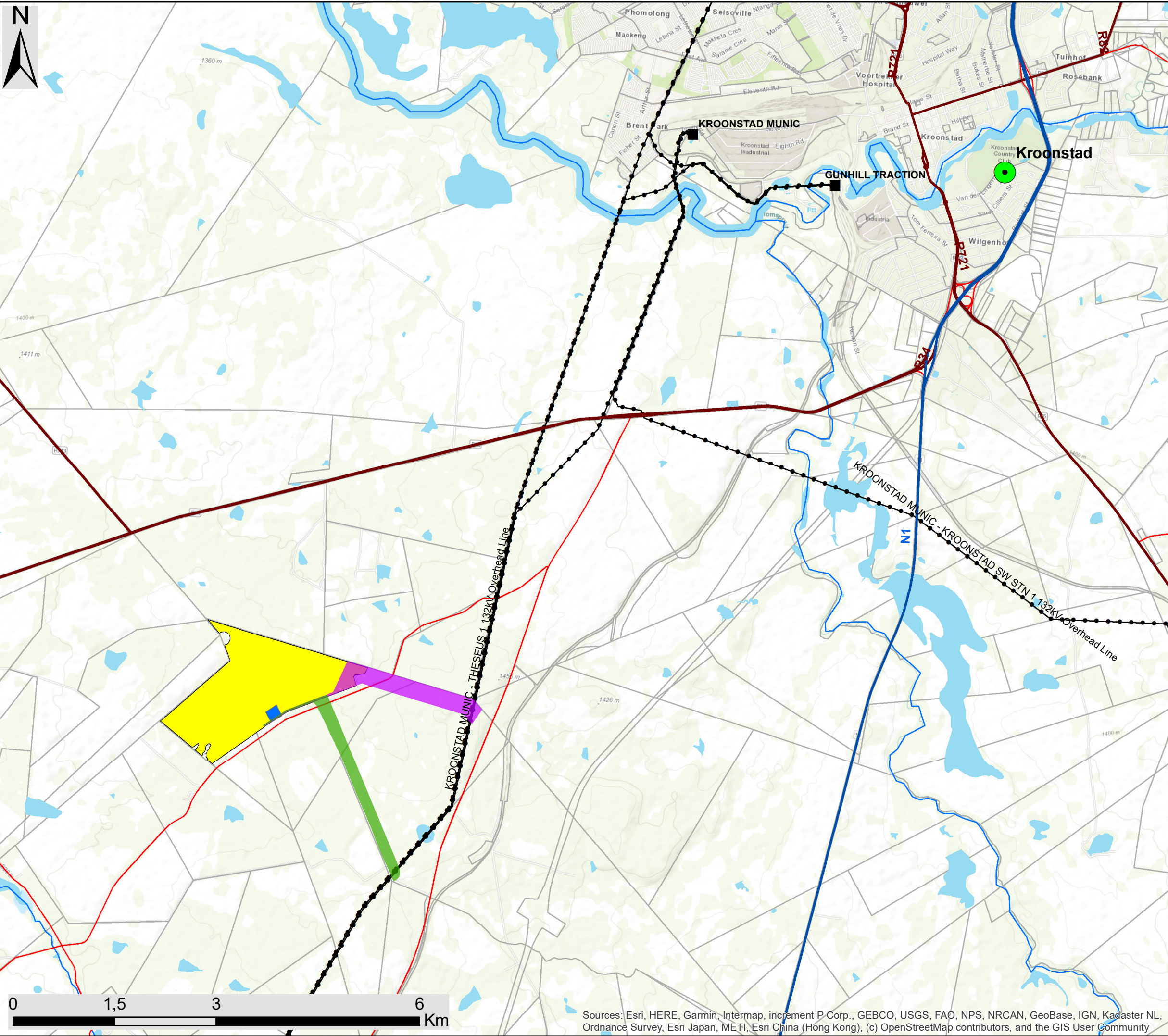


Vrede EGI Free State Province Locality Map



- ### Legend
- Major Town
 - Substations
 - Existing Power Lines
 - National Road
 - Main Road
 - Regional Road
 - Perennial Rivers
 - NFEPA Wetlands
 - Development Area
 - Substation
 - Vrede Grid Corridor Option 1
 - Vrede Grid Corridor Option 2
 - Farm Portions



Scale: 1: 53 657
Projection: GCS_WGS_1984
Map Ref: Vrede EGI Locality



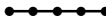













Sources: Esri, HERE, Garmin, Intermap, increment P Corp., GEBCO, USGS, FAO, NPS, NRCAN, GeoBase, IGN, Kadaster NL, Ordnance Survey, Esri Japan, METI, Esri China (Hong Kong), (c) OpenStreetMap contributors, and the GIS User Community





Vrede EGI Free State Province Layout Map

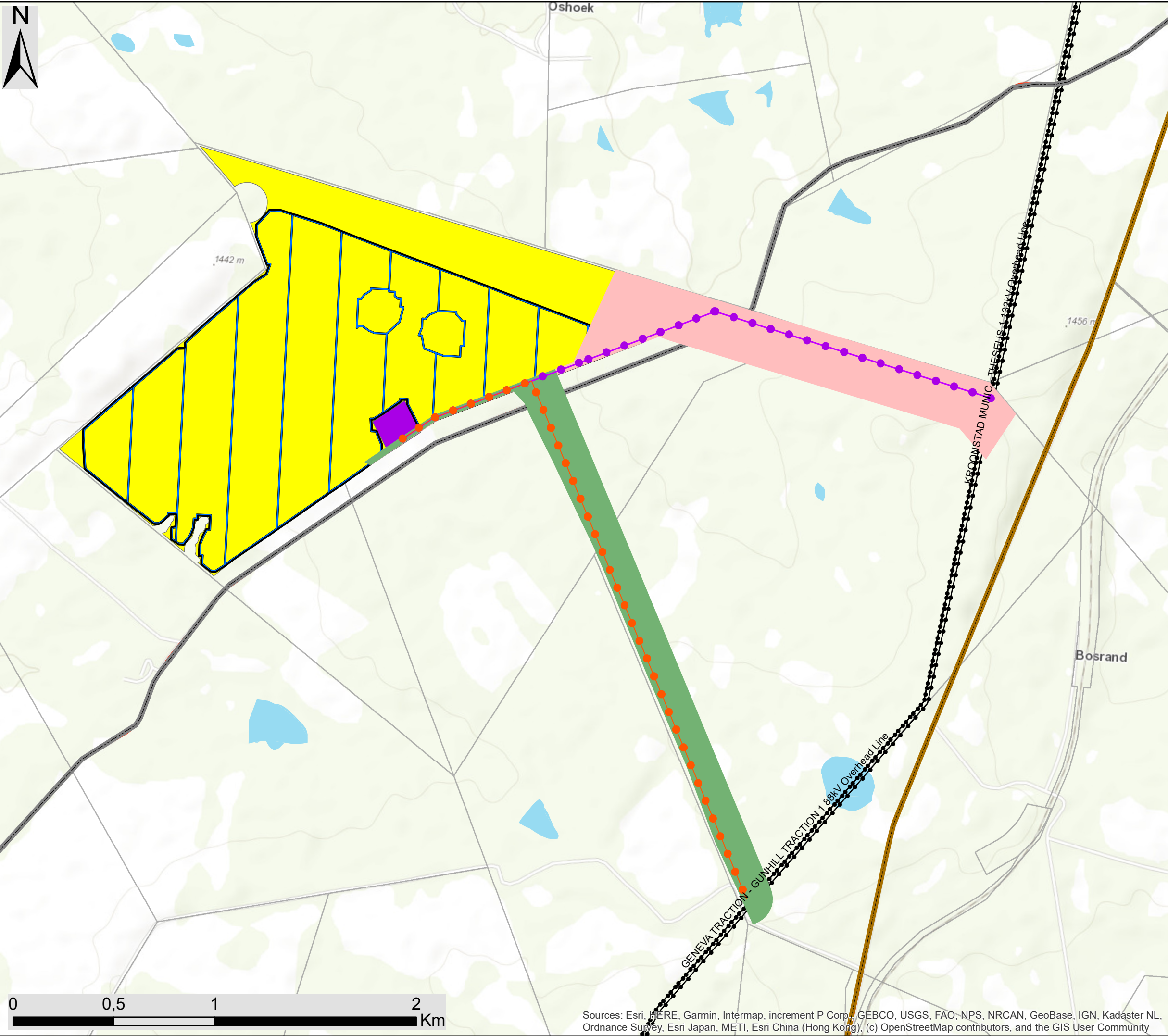
Legend

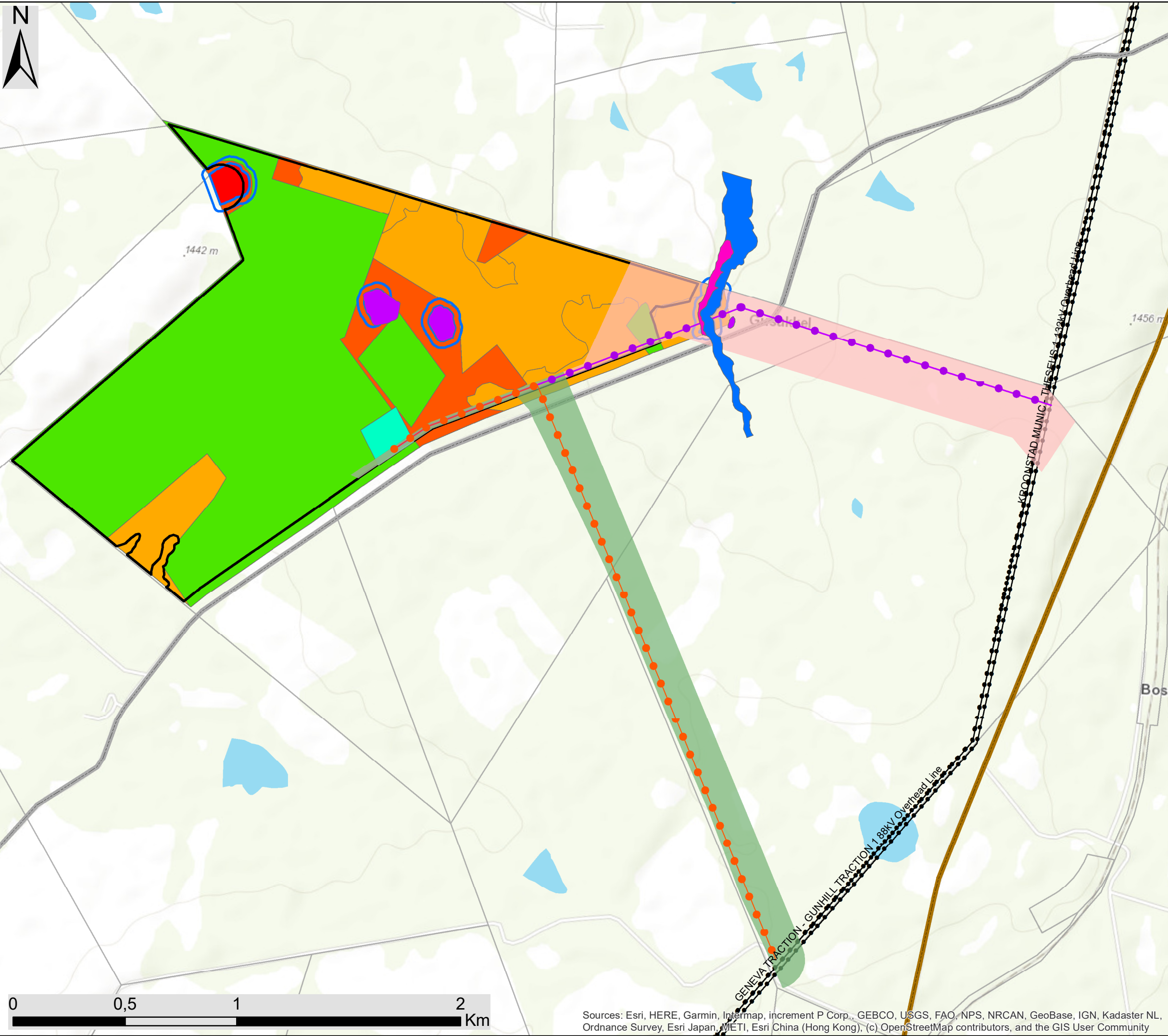
-  Existing Power Lines
 -  Main road
 -  P991 (Tarred Road)
 -  S172 (Gravel Road)
 -  NFEPA Wetlands
 -  Farm Portions
- ## Layout Plan
-  Civil Fence
 -  Civil Roads
 -  Vrede Grid Connection Option 1
 -  Vrede Grid Connection Option 2
 -  Vrede Grid Corridor Option 1
 -  Vrede Grid Corridor Option 2
 -  Development Area
 -  Substation

Scale: 1: 18 038
Projection: GCS_WGS_1984
Map Ref: Vrede EGI Layout



Sources: Esri, HERE, Garmin, Intermap, increment P Corp., GEBCO, USGS, FAO, NPS, NRCAN, GeoBase, IGN, Kadaster NL, Ordnance Survey, Esri Japan, METI, Esri China (Hong Kong), (c) OpenStreetMap contributors, and the GIS User Community





Vrede EGI Free State Province Layout and Sensitivity Map

Legend

- Existing Power Lines
- P991 (Tanned Road)
- S172 (Gravel Road)
- NFEPA Wetlands
- Farm Portions

Layout Plan

- Vrede Grid Connection Option 1
- Vrede Grid Connection Option 2
- Vrede Grid Corridor Option 1
- Vrede Grid Corridor Option 2
- Development Area
- Substation

Environmental Sensitivities

- Channelled Valley-Bottom Wetland
- Depression Wetland
- Seepage Wetland
- Wetland Buffers (30m)

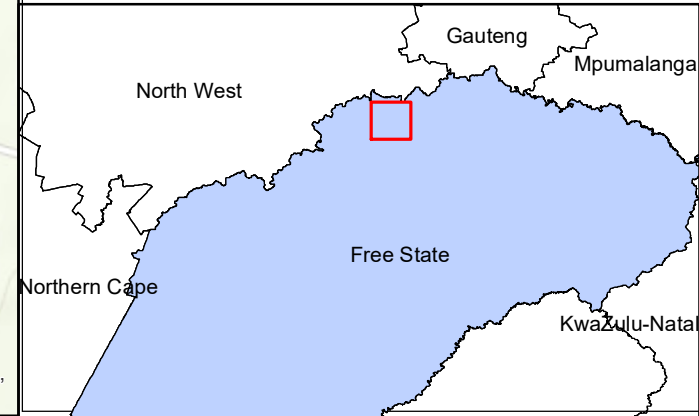
Ecological Sensitivities

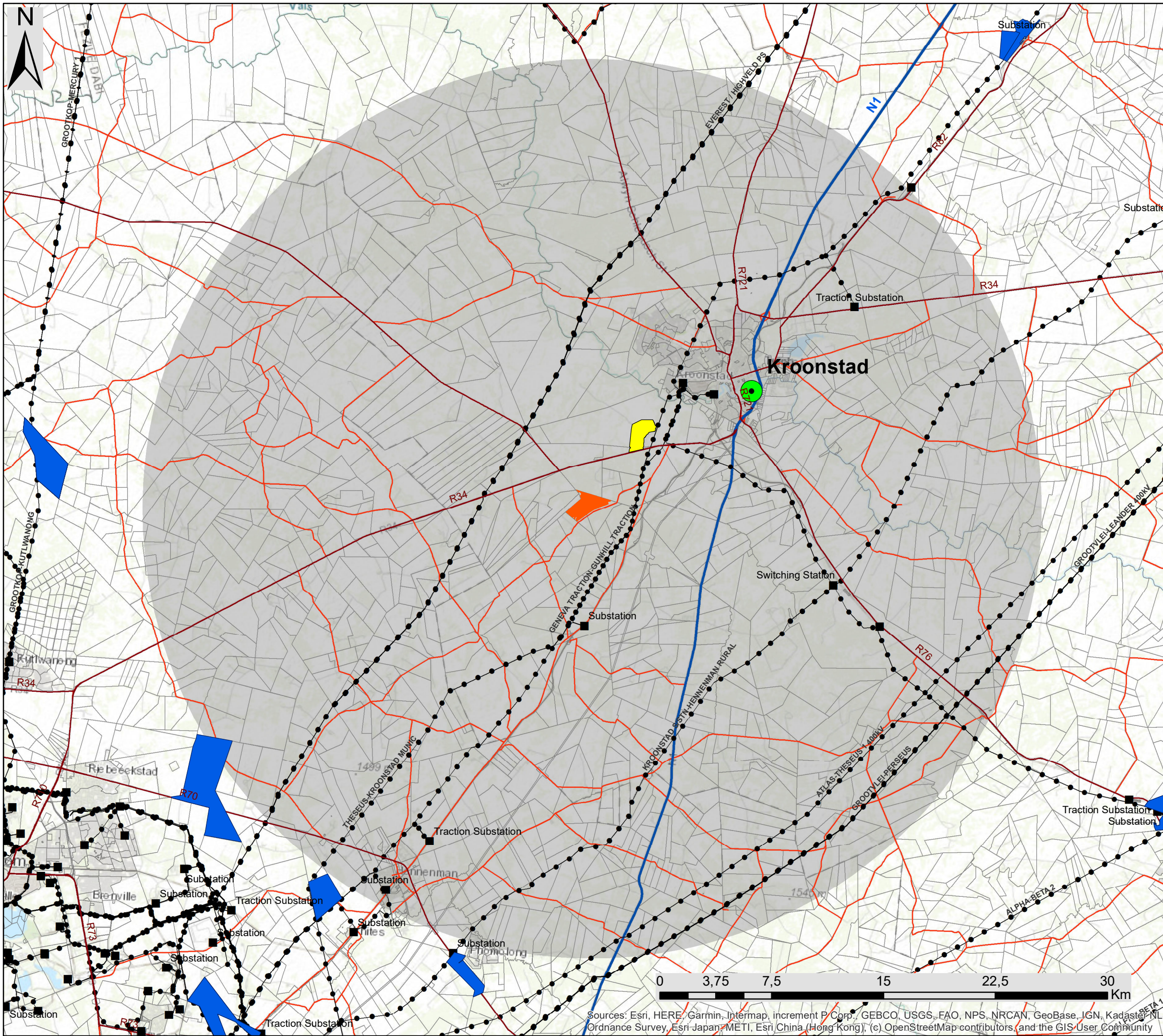
- Low
- Medium
- High
- Very High

Scale: 1: 18 038
 Projection: GCS_WGS_1984
 Map Ref: Vrede EGI Layout and Sensitivity



Sources: Esri, HERE, Garmin, Intermap, increment P Corp., GEBCO, USGS, FAO, NPS, NRCAN, GeoBase, IGN, Kadaster NL, Ordnance Survey, Esri Japan, METI, Esri China (Hong Kong), (c) OpenStreetMap contributors, and the GIS User Community





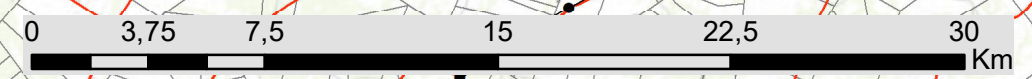
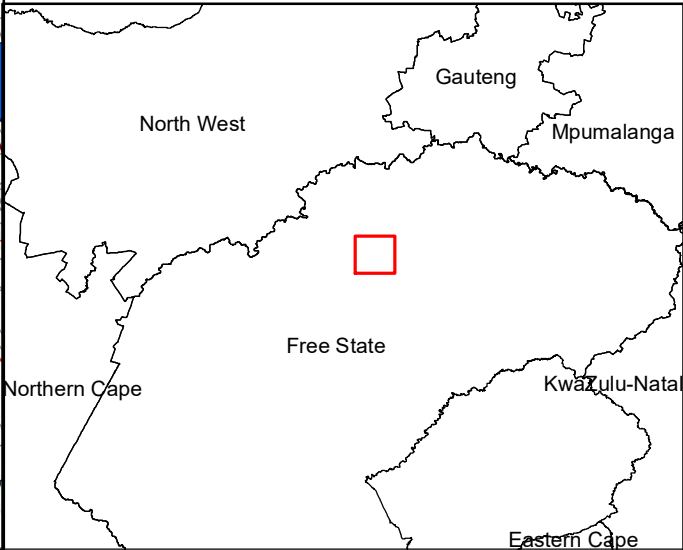
Vrede Solar PV Facility, Free State Province

Cumulative Map

Legend

- Major Town
 - Eskom Substations
 - Existing Power Line
 - National Road
 - Main Road
 - Regional Roads
 - Vrede Development Area
 - 30km Radius
 - Farm Portions
- ### Other Solar PV Developments
- Rondavel Development Area
 - Various Solar PV Facilities

Scale: 1: 243 219
 Projection: WGS_1984
 Map Ref: Vrede - Cumulative Map



Sources: Esri, HERE, Garmin, Intermap, increment P Corp., GEBCO, USGS, FAO, NPS, NRCAN, GeoBase, IGN, Kadaster NL, Ordnance Survey, Esri Japan, METI, Esri China (Hong Kong), (c) OpenStreetMap contributors, and the GIS User Community



Vrede EGI Free State Province Layout Map

Legend

- Existing Power Lines
- Main road
- P991 (Tarred Road)
- S172 (Gravel Road)
- NFEPA Wetlands
- Farm Portions

Layout Plan

- Civil Fence
- Civil Roads
- Vrede Grid Connection
- Vrede Grid Corridor
- Development Area
- Substation

Scale: 1: 18 038
Projection: GCS_WGS_1984
Map Ref: Vrede EGI Layout



Sources: Esri, HERE, Garmin, Intermap, increment P Corp., GEBCO, USGS, FAO, NPS, NRCAN, GeoBase, IGN, Kadaster NL, Ordnance Survey, Esri Japan, METI, Esri China (Hong Kong), (c) OpenStreetMap contributors, and the GIS User Community

