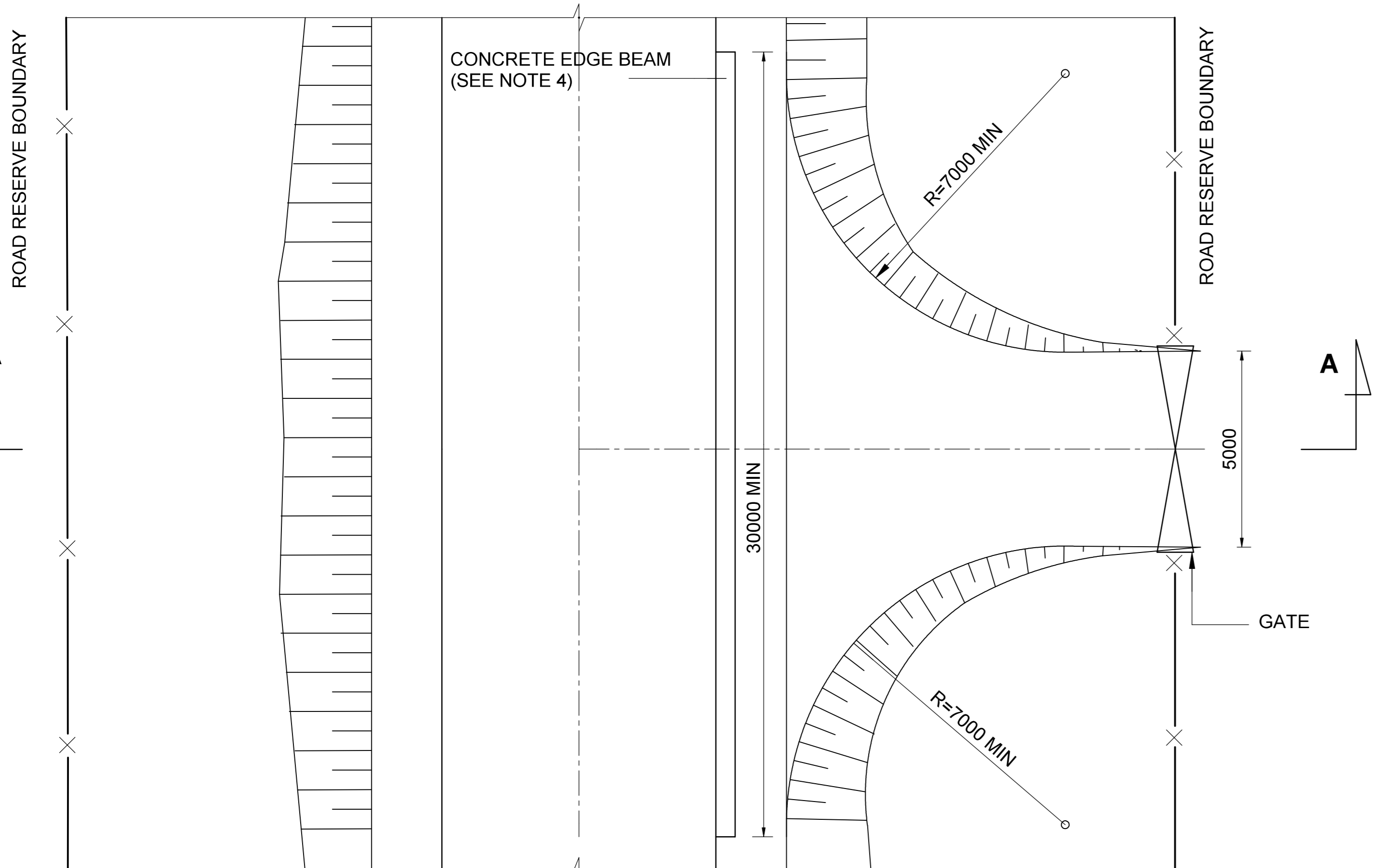
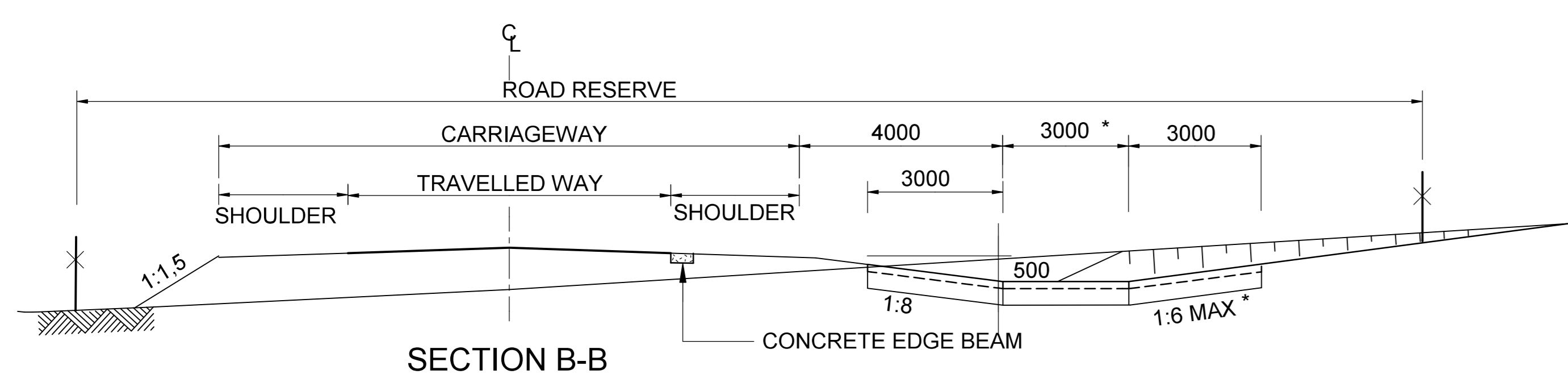


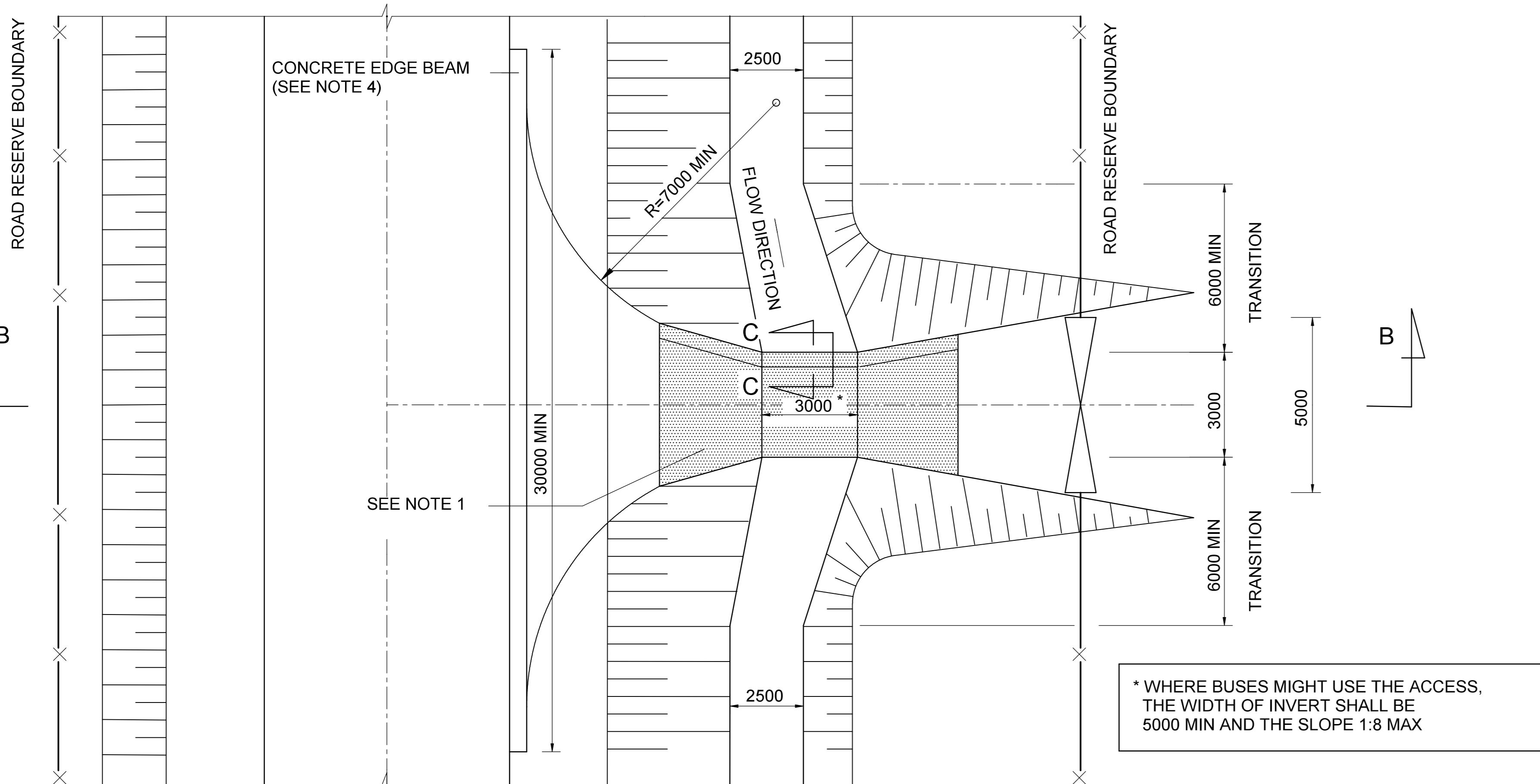
SECTION A-A



FARM ROAD JUNCTION WITH ROAD IN FILL

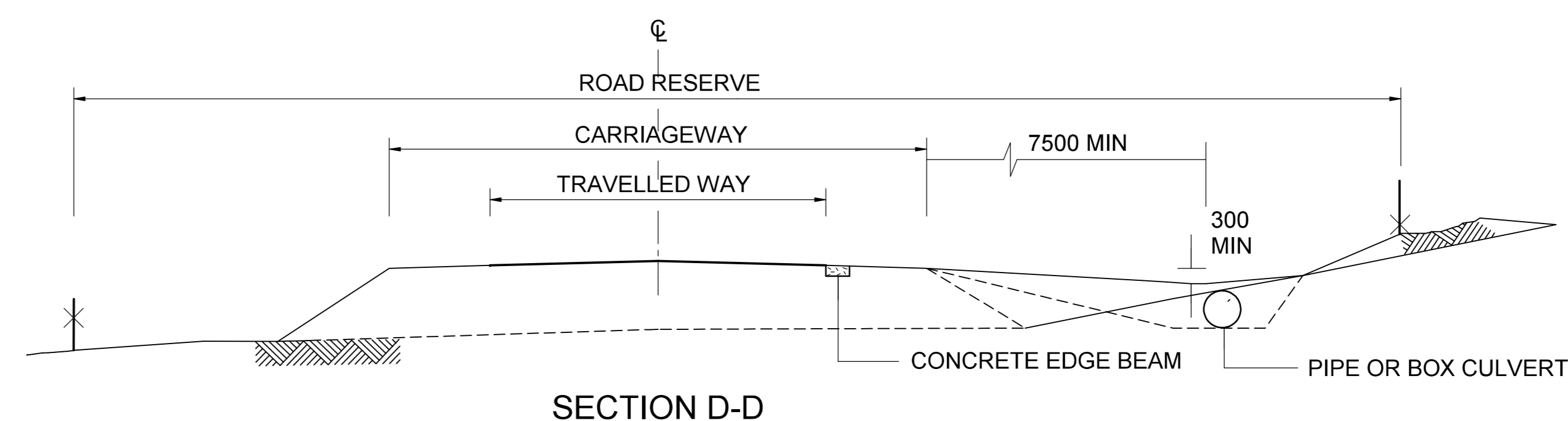


SECTION B-B

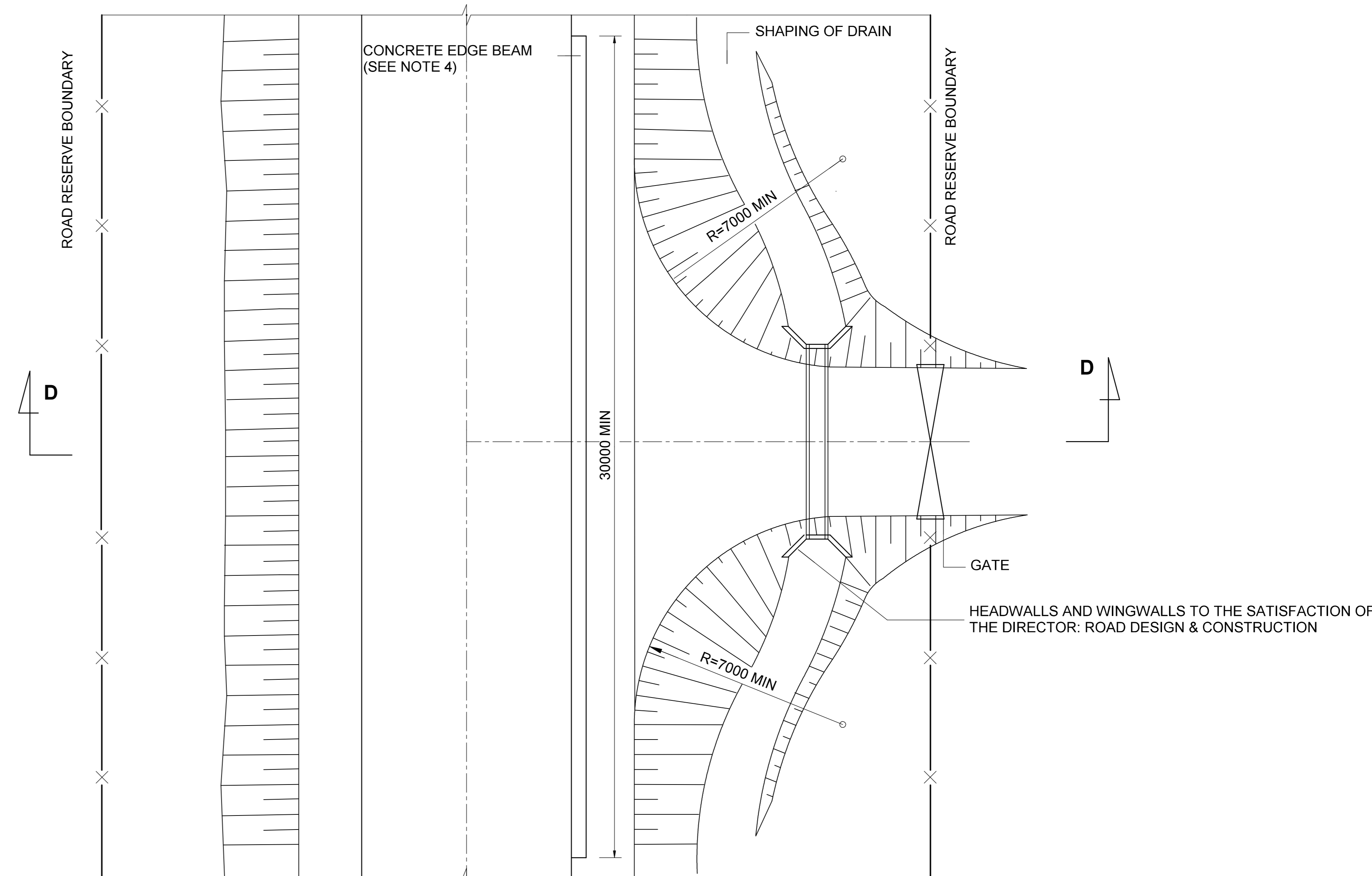


FARM ROAD JUNCTION WITH DRIFT

\* WHERE BUSES MIGHT USE THE ACCESS, THE WIDTH OF INVERT SHALL BE 5000 MIN AND THE SLOPE 1:8 MAX

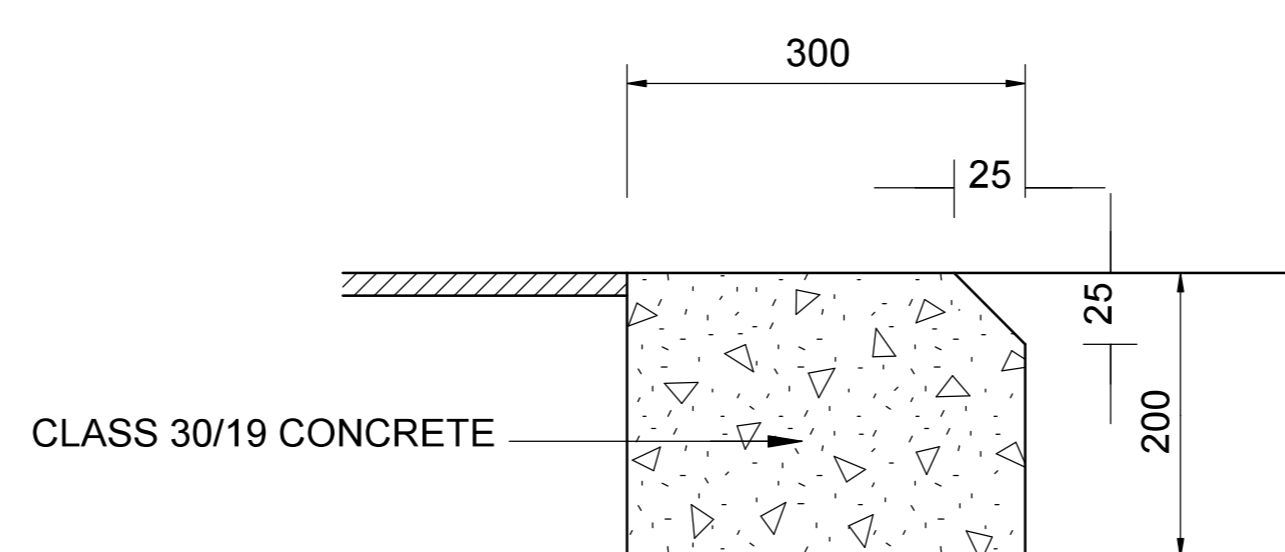


SECTION D-D



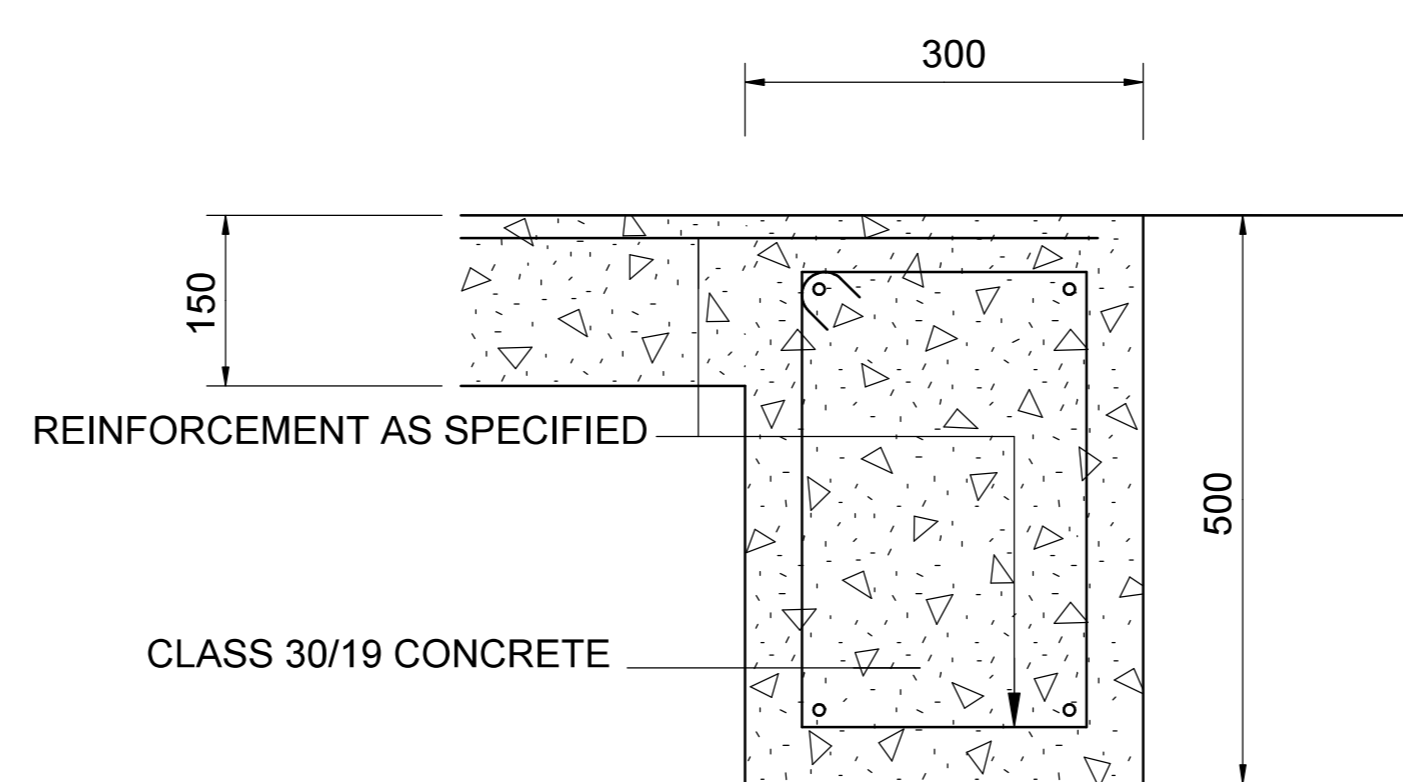
ALTERNATIVE : FARM ROAD JUNCTION WITH PIPE OR BOX CULVERT

(SEE NOTE 3)



DETAIL OF CONCRETE EDGE BEAM

(SEE NOTE 5)



SECTION C-C

(FOR USE IN CONCRETE)

NOTES:

1. USE CONCRETE, STONE PITCHING, GABION MATTRESSES OR OTHER SUITABLE MATERIAL TO PROTECT A DRIFT, WHERE NECESSARY. PROTECTION OF THE FULL ACCESS IS ONLY TO BE CONSIDERED IN EXCEPTIONAL CASES.
2. WHEN CONCRETE IS USED, A 300x500 CONCRETE BEAM SHALL PROTECT THE FLOOR EDGES OF THE DRIFT AGAINST SCOURING. SEE SECTION C-C FOR DETAIL.
3. THE ALTERNATIVE WITH A PIPE OR BOX CULVERT SHALL BE USED ONLY WHEN THE EXCAVATION BECOMES TOO DEEP FOR A DRIFT, OR WHERE DRAINAGE IS REQUIRED IN A FILL.
4. WHERE UNRAVELLING OF TARRIED EDGES MAY BE EXPECTED, THE CONCRETE BEAM SHALL BE CONSTRUCTED AS INDICATED.
5. CONCRETE EDGE BEAM MUST BE PROVIDED WITH A SHRINKAGE JOINT EVERY 2m AND AN EXPANSION JOINT EVERY 10m.

AA	18-12-2012	For Approval		
No	DATUM DATE	WYSIGINGS / AMENDMENTS	nms Hoof v. Dept. for Head of Dept.	DATUM DATE

SURVEYED BY:  
LIDAR SURVEY RECEIVED NOVEMBER 2011 FROM XSTRATA

DESIGNED FOR:  
TWEEOFONTEIN PROJECT XSTRATA COAL SA

DESIGNED BY:  
JEFFARES & GREEN PTY (Ltd) ENGINEERING AND ENVIRONMENTAL CONSULTING

DESIGN APPROVED BY:  
GOEDGEKEUR DEUR

DESIGNED BY:  
ONTWERP DEUR

DESIGNED BY:  
MPUMALANGA REGERING

MPUMALANGA GOVERNMENT PUBLIC WORKS, ROADS AND TRANSPORT



SKAAL / SCALE: NTS

LÉER Nr / FILE No	DISTRIK / DISTRICT	PROVINSIE PLAN Nr / PROVINCE PLAN No
---	NKANGALA	MTP 3/1
TIPE ONTWERP / TYPE OF PLANNING	PAD Nr / ROAD No	XSTRATA COAL PLAN Nr / PLAN No
PRELIMINARY DESIGN	P141-1 & D2769	TOP-J&G-5003-CV-01-1408

PROVINCE PLAN No MTP 3/1  
XSTRATA COAL PLAN No TOP-J&G-5003-CV-01-1408







